



Works approval number	W6570/2021/1
Works approval holder	Elan Energy Matrix Pty Ltd
ACN	611 714 580
Registered business address	PWC Level 15 125 St Georges Terrace Perth WA 6000
DWER file number	DER2018/001042-5~54
Duration	09/02/2022 to 08/02/2027
Date of issue	09/02/2022
Premises details	Tacoma Facility 54 Tacoma Circuit Canning Vale WA 6155 Legal description - Lot 71 on Deposited Plan 57164 Certificate of Title Volume 2696 Folio 614 As defined by the coordinates in Schedule 1

Prescribed premises category description (Schedule 1, <i>Environmental Protection Regulations 1987</i>)	Assessed production / design capacity
Category 57: <i>Used tyre storage (general): premises (other than premises within category 56) on which used tyres are stored.</i>	5,000 tyres at any time

This works approval is granted to the works approval holder, subject to the attached conditions, on 09 February 2022, by:

Melissa Chamberlain
A/MANAGER WASTE INDUSTRIES
REGULATORY SERVICES

an officer delegated under section 20 of the *Environmental Protection Act 1986* (WA)

Works approval history

Date	Reference number	Summary of changes
09/02/2022	W6570/2021/1	Works Approval issued

Interpretation

In this works approval:

- (a) the words 'including', 'includes' and 'include' in conditions mean "including but not limited to", and similar, as appropriate;
- (b) where any word or phrase is given a defined meaning, any other part of speech or other grammatical form of that word or phrase has a corresponding meaning;
- (c) where tables are used in a condition, each row in a table constitutes a separate condition;
- (d) any reference to an Australian or other standard, guideline, or code of practice in this works approval:
 - (i) if dated, refers to that particular version; and
 - (ii) if not dated, refers to the latest version and therefore may be subject to change over time;
- (e) unless specified otherwise, any reference to a section of an Act refers to that section of the EP Act; and
- (f) unless specified otherwise, all definitions are in accordance with the EP Act.

NOTE: This works approval requires specific conditions to be met but does not provide any implied authorisation for other emissions, discharges, or activities not specified in this works approval.

Works approval conditions

The works approval holder must ensure that the following conditions are complied with:

Construction phase

Infrastructure and equipment

1. The works approval holder must:
 - (a) construct and/or install the infrastructure and/or equipment;
 - (b) in accordance with the corresponding design and construction / installation requirements; and
 - (c) at the corresponding infrastructure location;as set out in Table 1.

Table 1: Design and construction / installation requirements

	Infrastructure	Design and construction / installation requirements	Infrastructure location
1.	Surface water containment infrastructure	To be constructed as detailed in DFES Guidance Note: <i>GN02 Bulk Storage of Rubber Tyres Including Shredded and Crumbed Tyres</i> . The external hardstand and building areas are to be concrete kerbed with the capability to contain at least 432,000 L of firewater ¹ .	Kerbed yard area (Figure 2)
2.	Tyre balers (2)	The equipment is designed and installed to minimize emissions of noise and vibration.	Warehouse baler location (Figure 2)
3.	Clearway line demarcation	Demarcate egress path in southern warehouse for clearways around all fire doors, fire shutters, and exits	Warehouse (Figure 2)
4.	Drain filter catch bags	Installation of drain filter catch bags to each soak well drainage system	Drain sumps (Figure 2)
5.	Hazmat manifest	Installation of hazmat manifest at front of the premises	Vehicle entrance (Figure 2)

Note 1: Based on three fire hydrant outlets 10 L/s for four hours

Compliance reporting

2. The works approval holder must within 30 calendar days of an item of infrastructure required by condition 1 being constructed:
 - (a) undertake an audit of their compliance with the requirements of condition 1; and
 - (b) prepare and submit to the CEO an Environmental Compliance Report on that compliance.
3. The Environmental Compliance Report required by condition 2, must include as a minimum the following:
 - (a) certification by a suitably qualified civil or structural engineer that the items of infrastructure or components thereof, as specified in condition 1, have been

- constructed in accordance with the relevant requirements specified in condition 1; and
- (b) be signed by a person authorised to represent the works approval holder and contains the printed name and position of that person.

Time limited operations phase

Commencement and duration

4. The works approval holder must only commence time limited operations for an item of infrastructure identified in condition 1 where the Environmental Compliance Report as required by condition 2 has been submitted by the works approval holder for that item of infrastructure.
5. The works approval holder may conduct time limited operations for an item of infrastructure specified in condition 1:
- (a) for a period not exceeding 90 calendar days from the day the works approval holder meets the requirements of condition 1 for that item of infrastructure; or
 - (b) until such time as a licence for that item of infrastructure is granted in accordance with Part V of the *Environmental Protection Act 1986*, if one is granted before the end of the period specified in condition 4(a).

Fire and emergency management

6. The works approval holder must implement a Fire and Emergency Management Plan that is consistent with Australian Standard AS 3745. The plan must include, but is not limited to:
- (a) notification procedures for fire and spill incidents;
 - (b) how fires will be prevented, detected, responded to, suppressed, contained and controlled for all approved activities addressing all waste types and for all stages of the waste handling, sorting and storage process;
 - (c) in the event of a fire occurring at the premises, how impacts to the environment and human health will be mitigated;
 - (d) how staff will be trained in fire and emergency response on an ongoing, annual basis;
 - (e) details on the firefighting equipment in place and/or accessible at the premises and the fire response capabilities and responsibilities;
 - (f) a premises map displayed at the front of the premises depicting an after hours contact details, plus the location and layout of:
 - (i) fire hose reels and hydrants;
 - (ii) electrical isolation points;
 - (iii) sub-surface drainage infrastructure, including details on flow direction and off-site discharge locations (if applicable);
 - (iv) system shutdown points; and
 - (v) fire response access points to the premises.
 - (g) hazmat manifest displayed at front of the premises.
7. The works approval holder must ensure the fire and emergency management requirements in Table 2 are complied with in the event of a fire.

Table 2: Fire and emergency management requirements

Management Requirement		Fire and emergency management requirements
1.	Fire suppression system	The fire hydrant system must have a minimum water supply and capacity that provides the maximum hydraulic demand for a minimum of four hours.
2.	Firewater containment	<ul style="list-style-type: none"> (a) Firewater that occurs at the premises must be contained within the capacity of hardstand and low permeability infrastructure. (b) The containment capacity for firewater must be calculated with the fire hydrant flow rates prescribed in Australian Standard AS 2419.1: <ul style="list-style-type: none"> (i) for all fully enclosed structures; and (ii) individually for each outside hardstand. (c) The containment capacity for firewater, no less than the volumes calculated in Table 2, row 2(b), must be permanent or achieved automatically when the fire system is activated on the premises. (d) Installation of drain filter catchment bags to each soak well drainage system. (e) Bunding must be available to prevent fire water from entering the onsite soak well system. (f) Bunding must be available to prevent fire water from entering other drains and discharge points. (g) Arrangements must exist for the removal of fire water, in excess of the containment capacity, by a carrier licensed under the <i>Environmental Protection (Controlled Waste) Regulations 2004</i>, to ensure firewater does not discharge to the environment.
3.	Notifications ¹	Notifications must follow procedures outlined in the Fire and Emergency Management Plan required by Condition 6

Note 1: Notification requirements may include advising the Department of Fire and Emergency Services, Western Australian Police, Ambulance Services, the Department of Water and Environmental Regulation and neighbouring premises.

Infrastructure and equipment

8. During time limited operations, the works approval holder must ensure that the premises infrastructure and equipment listed in Table 3 is maintained and operated in accordance with the operational requirement set out in Table 3.

Table 3: Infrastructure and equipment requirements during time limited operations

Infrastructure	Operational requirements
Tyre balers (2)	<ul style="list-style-type: none"> • Operated within the warehouse area only. • At maximum capacity to process three truck tyre bales (40 tyres per bale) or four car tyre bales (150 tyres per bale) per hour.

Infrastructure	Operational requirements
Warehouse; internal tyre receival and storage	<p>Tyres received at the premises will only be stored directly into receival containers (pods) located within warehouse.</p> <p>A maximum of two overflow stacks may be established within the warehouse for use in the event that the receival containers are full due at the time of delivery.</p> <p>All tyres will be stored internally in the warehouse in accordance with Department of Fire and Emergency Services (DFES) <i>Guidance Note: GN02 Bulk Storage of Rubber Tyres</i> as follows:</p> <ul style="list-style-type: none"> • Individual tyre stacks within the warehouse will not exceed 3.7 m in height and 30 m² in area; • Stored tyres or receival containers will remain at least 1 m clear in all directions from the underside of the warehouse roof, roof structure members, and lights (including light fixtures); • A minimum clearance of 1 m will be maintained along paths of travel to required exits and firefighting equipment (e.g., fire hose reels, fire extinguishers & fire hydrants); • The paths of travel will always be kept clear and unobstructed; and • A minimum clearance of 3 m will be provided between tyre stacks and any load bearing building elements; and • The maximum storage on the site at any one time will be 5,000 tyres with no more than 100 tyre bales.
External container bays	<ul style="list-style-type: none"> • Full baled tyre containers are to be stored within the designated container bays of the warehouse; • Full baled tyre containers can only to be stored external to warehouse within premises boundary prior to removal off site; and • No more than four containers will be kept in the external yard area.
Stormwater drainage	<ul style="list-style-type: none"> • All stormwater from external hardstand and roofs will be collected and contained on site in the existing soak wells.

9. The works approval holder must only allow waste to be accepted onto the Premises if:
- It is of a type listed in Table 4;
 - The quantity accepted is below any limit listed in Table 4; and
 - It meets any specification listed in Table 4.

Table 4: Waste acceptance

Waste type	Quantity limit tonnes/year	Specification ¹
Inert Waste Type 2	5,000 tyres at any time	Storage and bailing of whole tyres only

Note 1: Additional requirements for the acceptance of controlled waste are set out in the Environmental Protection (Controlled Waste) Regulations 2004.

10. The works approval holder may only perform time limited operational activities from 0730 to 1730 Monday to Friday.

Monitoring

11. The works approval holder must undertake the monitoring specified in Table 5 during time limited operations.

Table 5: Monitoring of inputs and outputs during time limited operations

Inputs/Outputs	Parameter	Averaging period	Frequency
Used tyres	Number of tyres received	Annual Period	Each load/container entering the premises
	Number of tyres removed		Each load/container leaving the premises
Full containers of bailed tyres	Date the container is deemed as full; and Date the container is removed from the premises	N/A	Each container upon filling and being removed from the premises.

Compliance reporting

12. The works approval holder must submit to the CEO a report on the time limited operations within 30 calendar days of the completion date of time limited operations or 30 calendar days before the expiration date of the works approval, whichever is the sooner.
13. The works approval holder must ensure the report required by condition 12 includes the following:
 - (a) a summary of the monitoring undertaken under condition 11; and
 - (b) a summary of any complaints received under condition 14.

Records and reporting

14. The works approval holder must record the following information in relation to complaints received by the works approval holder (whether received directly from a complainant or forwarded to them by the Department or another party) about any alleged emissions from the premises:
 - (a) The name and contact details of the complainant, (if provided);
 - (b) The time and date of the complaint;
 - (c) The complete details of the complaint and any other concerns or other issues raised; and
 - (d) The complete details and dates of any action taken by the works approval holder to investigate or respond to any complaint.
15. The works approval holder must maintain accurate and auditable books including the following records, information, reports, and data required by this works approval:
 - (a) The works conducted in accordance with condition 1;
 - (b) Any maintenance of infrastructure that is performed in the course of complying with condition 1 or condition 8;
 - (c) Monitoring programmes undertaken in accordance with condition 11; and
 - (d) Complaints received under condition 14.

- 16.** The books specified under condition 15 must:
- (a) Be legible;
 - (b) If amended, be amended in such a way that the original version(s) and any subsequent amendments remain legible and are capable of retrieval;
 - (c) Be retained by the works approval holder for the duration of the works approval; and
 - (d) be available to be produced to an inspector or the CEO as required.

Definitions

In this works approval, the terms in Table 6 have the meanings defined.

Table 6: Definitions

Term	Definition
annual period	a 12 month period commencing from 1 January until 31 December of the same year.
Australian Standard AS 2118.1	means Standards Australia <i>AS 2118.1 Automatic fire sprinkler system Part 1 General systems</i>
Australian Standard AS 2419.1	means Standards Australia <i>AS 2419.1 Fire hydrant installations Part 1: System design, installation and commissioning</i>
Australian Standard AS 3745	means Standards Australia <i>AS 3745 Planning for emergencies in facilities</i>
books	has the same meaning given to that term under the EP Act.
CEO	means Chief Executive Officer. CEO for the purposes of notification means: Director General Department administering the <i>Environmental Protection Act 1986</i> Locked Bag 10 Joondalup DC WA 6919 info@dwer.wa.gov.au
Department	means the department established under section 35 of the <i>Public Sector Management Act 1994</i> and designated as responsible for the administration of Part V Division 3 of the EP Act.
discharge	has the same meaning given to that term under the EP Act.
emission	has the same meaning given to that term under the EP Act.
Environmental Compliance Report	means a report to satisfy the CEO that the conditioned infrastructure and/or equipment has been constructed and/or installed in accordance with the works approval.
EP Act	<i>Environmental Protection Act 1986 (WA)</i> .
EP Regulations	<i>Environmental Protection Regulations 1987 (WA)</i> .
Fire and Emergency Management Plan	means a Fire and Emergency Management Plan that meets the requirements specified in condition 6 of this approval
fire management consultant	means a person who: (a) has a minimum of five years of experience working in a supervisory area of fire control system design, installation and

Term	Definition
	<p>commissioning; and</p> <p>(b) is employed by an independent third party external to the licence holder's business;</p> <p>or is otherwise approved in writing by the CEO to act in this capacity.</p>
firewater	means water that, in the event of a fire, has been used to extinguish a fire, and all materials and combusting products dissolved or suspended within such water, and includes other fire suppressant substances such as foams.
monthly period	means a one-month period commencing from day 15 of a month until day 14 of the immediately following month.
premises	the premises to which this licence applies, as specified at the front of this licence and as shown on the premises map (Figure 1) in Schedule 1 to this works approval.
prescribed premises	has the same meaning given to that term under the EP Act.
suitably qualified civil or structural engineer	<p>means a person who:</p> <p>a) holds a relevant civil or structural engineering tertiary academic qualification; and</p> <p>b) has a minimum of at least three years of experience working in the area/field of civil engineering.</p>
time limited operations	refers to the operation of the infrastructure and equipment identified under this works approval that is authorised for that purpose, subject to the relevant conditions.
waste	has the same meaning given to that term under the EP Act.
works approval	refers to this document, which evidences the grant of the works approval by the CEO under section 54 of the EP Act, subject to the conditions.
works approval holder	refers to the occupier of the premises being the person to whom this works approval has been granted, as specified at the front of this works approval.

END OF CONDITIONS

Schedule 1: Maps

Premises map

The boundary of the prescribed premises is shown in the map below (Figure 1).

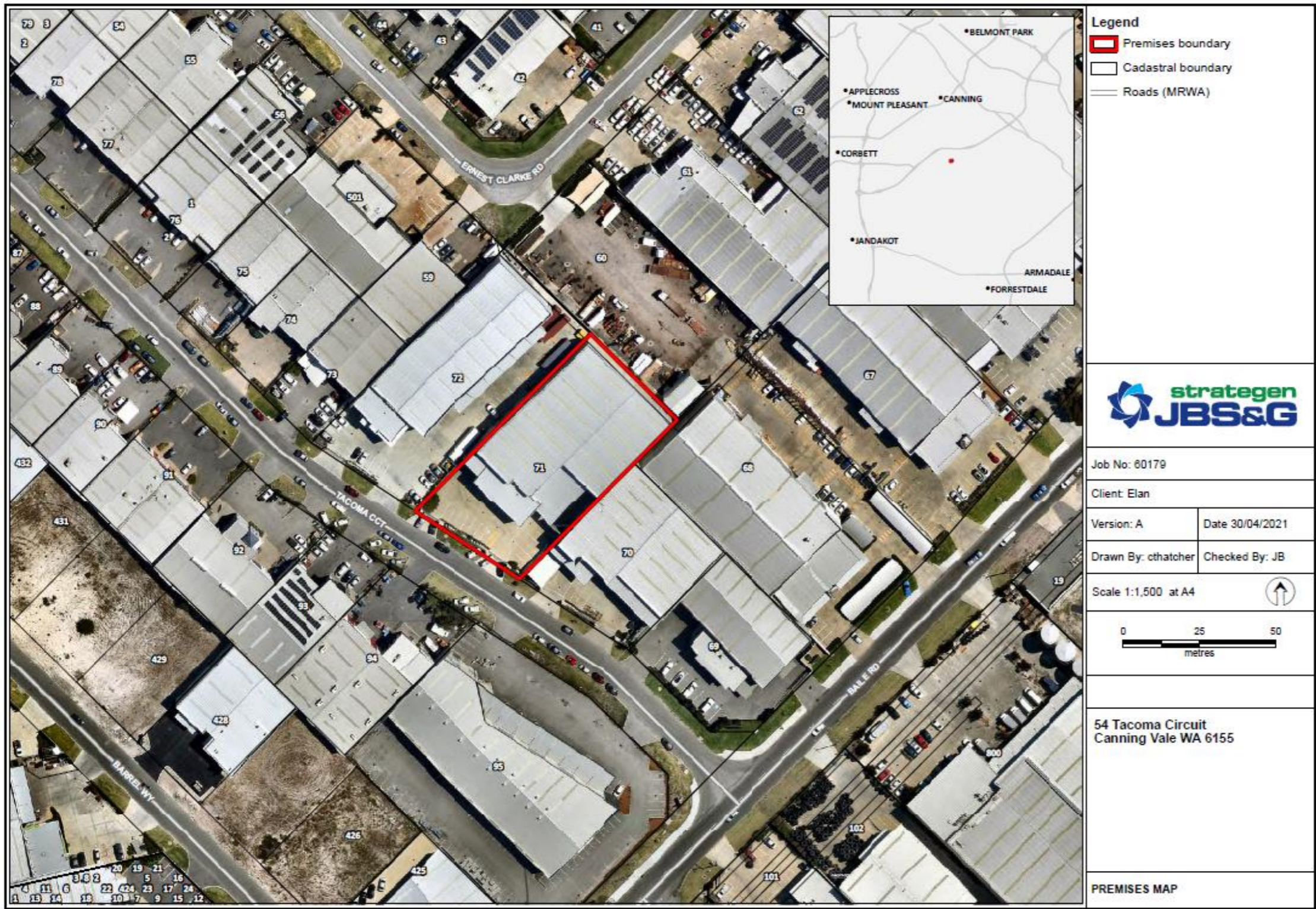


Figure 1: Prescribed Premises



Figure 2: Site layout

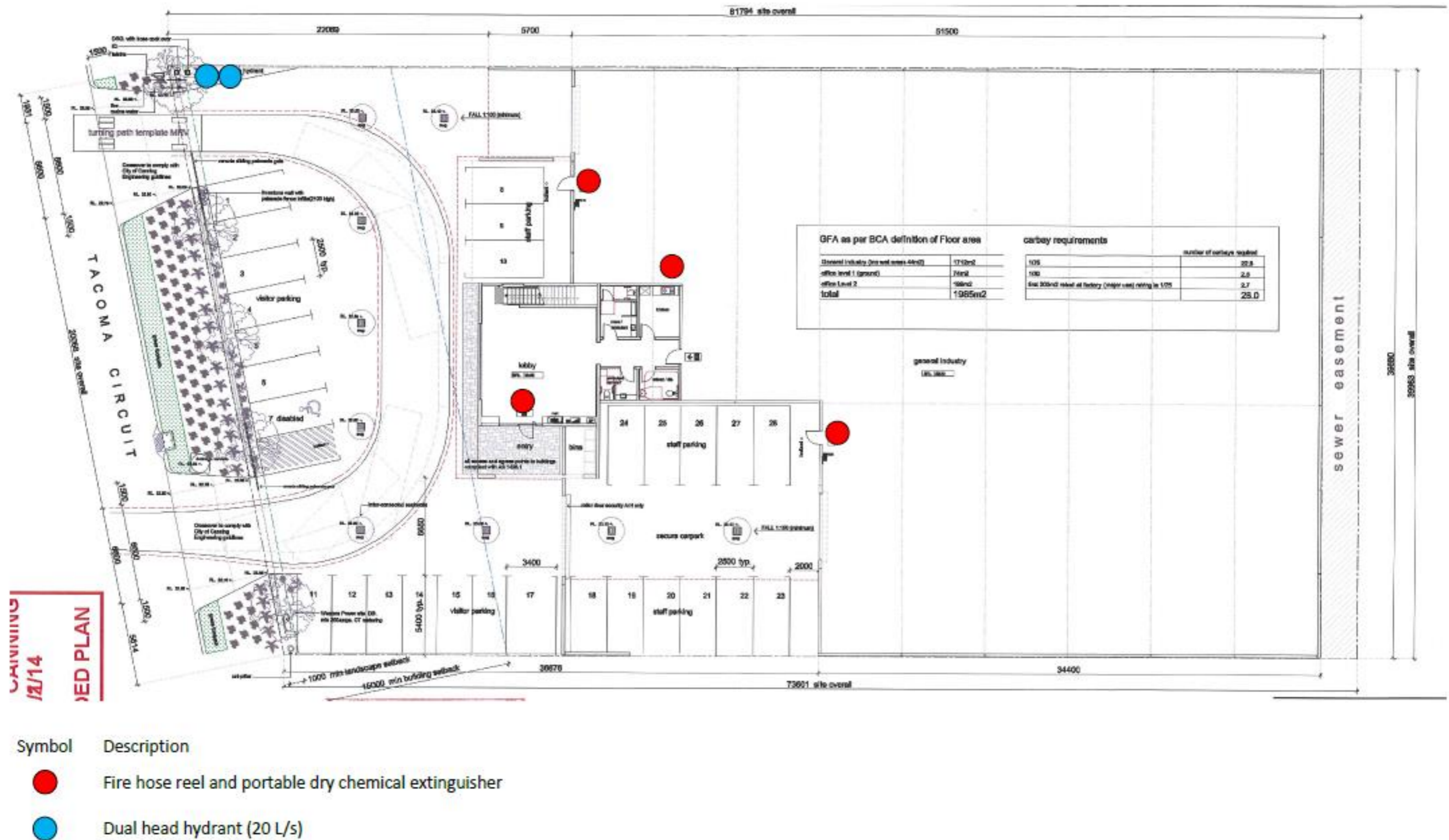


Figure 3: Firefighting equipment

Schedule 2: Premises boundary

The premises boundary is defined by the coordinates in Table 7.

Table 7: Premises boundary coordinates

Easting	Northing
3997747.55	6451965.58
3977871.70	6451943.23
397833.47	6451995.49
397805.14	6452023.65

Note: GDA 2020 Zone 50