



<b>Works approval number</b>	W6686/2022/1
<b>Works approval holder</b>	Water Corporation
<b>Registered business address</b>	629 Newcastle Street
<b>DWER file number</b>	DER2021/000350
<b>Duration</b>	27/09/2022 to 27/09/2027
<b>Date of issue</b>	27/09/2022
<b>Premises details</b>	Lloyd Street North Wastewater Pumping Station Plant Lot 334 on Diagram 77554, and Part of Road Reserve, Lloyd Street, Middle Swan As defined by the coordinates in Schedule 1

<b>Prescribed premises category description (Schedule 1, <i>Environmental Protection Regulations 1987</i>)</b>	<b>Assessed production capacity</b>
Category 85A: Sewage pumping station: premises on which sewage is pumped (other than to or from septic tanks) and where a discharge of waste from the station may enter the Swan River or the Canning River.	2,500 cubic metres per day

This works approval is granted to the works approval holder, subject to the attached conditions, on 27 September 2022, by:

**Abbie Crawford**  
**A/MANAGER, WASTE INDUSTRIES**

an officer delegated under section 20 of the *Environmental Protection Act 1986* (WA)

## Works approval and licence history

Reference number	Date	Summary of changes
R1211/1996/1	29/09/2000	Registration granted.
W6686/2022/1	27/09/2022	Works approval granted.

## Interpretation

In this works approval:

- (a) the words 'including', 'includes' and 'include' in conditions mean "including but not limited to", and similar, as appropriate;
- (b) where any word or phrase is given a defined meaning, any other part of speech or other grammatical form of that word or phrase has a corresponding meaning;
- (c) where tables are used in a condition, each row in a table constitutes a separate condition;
- (d) any reference to an Australian or other standard, guideline, or code of practice in this works approval:
  - (i) if dated, refers to that particular version; and
  - (ii) if not dated, refers to the latest version and therefore may be subject to change over time;
- (e) unless specified otherwise, any reference to a section of an Act refers to that section of the EP Act; and
- (f) unless specified otherwise, all definitions are in accordance with the EP Act.

**NOTE:** This works approval requires specific conditions to be met but does not provide any implied authorisation for other emissions, discharges, or activities not specified in this works approval.

## Works approval conditions

The works approval holder must ensure that the following conditions are complied with:

1. The works approval holder must submit a Construction Environmental Management Plan (CEMP) to the CEO a minimum 30 working days prior to construction activities commencing.
2. The CEMP specified in condition 1 should include as a minimum:
  - (a) details of the potential sources of:
    - (i) noise emissions;
    - (ii) odour emissions;
    - (iii) light emissions;
    - (iv) wastewater discharge emissions;
    - (v) chemicals and hydrocarbons discharges; and
    - (vi) dust emissions;
    - (vii) litter;during the construction works; and
  - (b) provide mitigation and management measures to reduce and prevent the potential emissions listed under condition 2(a).
  - (c) demonstrate how compliance with the *Environmental Protection (Noise) Regulations 1997* will be achieved.

## Infrastructure and equipment

3. The works approval holder must:
  - (a) construct and/or install the infrastructure and/or equipment;
  - (b) in accordance with the corresponding design and construction / installation requirements;
  - (c) at the corresponding infrastructure location, as set out in Table 1.

**Table 1: Design and construction / installation requirements**

Infrastructure	Design and construction / installation requirements
Additional row storage	<ul style="list-style-type: none"><li>• 17 x 2.44m long DN1800 Class 4 concrete pipes (connected).</li><li>• Installed below ground adjacent to the existing row storage.</li><li>• Connected into the current access chamber.</li><li>• Provide an additional volume of 100m<sup>3</sup>.</li><li>• The works approval holder shall ensure the access chamber is sealed when tie in works and associated activities are not being undertaken.</li><li>• The existing WWPS and row storage must remain operational throughout the construction and commissioning.</li><li>• Additional row storage, pipework, fittings and pumps must be leak tested and deemed fit for purpose prior to use.</li></ul>

## Acid Sulfate Soils and dewatering management

4. The works approval holder must manage:
  - (a) acid sulfate soils, in accordance with the Acid Sulfate Soil Management Plan, 1784497-098-R-Rev3, prepared by Golder, March 2022, and consistent with the acid sulfate soil guidelines; and
  - (b) dewatering in accordance with the Dewatering Management Plan, 1784497-099-R-Rev2, prepared by Golder, March 2022.
5. The works approval holder must ensure where ASS or PASS is disposed of to an authorised facility that receipts or other acceptance records from the relevant facility, including details of the total amount of ASS or PASS material disposed is provided in the Environmental Compliance Report required under condition 9.
6. The works approval holder must ensure that treated ASS or PASS is only re-used at the premises after validation sampling confirms neutralisation has been achieved.
7. The works approval holder must ensure treated dewatering effluent meets a pH range between 6.0 and 8.5 and with a total acidity level not exceeding 40 mg/L as CaCO<sub>3</sub>.
8. The works approval holder must monitor dewatering effluent for concentrations of the identified parameters in accordance with Table 2.

**Table 2: Monitoring of dewatering effluent**

Parameter	Units	Location	Frequency	Sample	Method
Electrical conductivity	μS/cm	All dewatering discharge lines	Every day during dewatering operations	In-field measurement	All water samples are collected and preserved in accordance with AS/NZS 5667.1 and sampling conducted in accordance with AS/NZS 5667.4
pH	N/A				
Total alkalinity	mg/L				
Total titratable alkalinity					
pH	N/A		Weekly	Spot sample	
Total alkalinity	mg/L				
Total titratable alkalinity					

## Compliance reporting

9. Within 60 calendar days of completing all construction and installation activity required by condition 3, the works approval holder must:
  - (a) undertake an audit of their compliance with the requirements of condition 3; and
  - (b) prepare and submit to the CEO an Environmental Compliance Report on that compliance.
10. The Environmental Compliance Report required by condition 9, must include as a minimum the following:
  - (a) certification by a suitably qualified, professional engineer that the items of infrastructure or component(s) thereof, as specified in condition 3, have been

- constructed in accordance with the relevant requirements specified in condition 3;
- (b) records of material movement and treatment conducted in accordance with the Acid Sulfate Soils Management Plan;
- (a) a summary of the environmental performance of each item of infrastructure or equipment as constructed or installed, including leak testing results;
- (c) monitoring results undertaken in accordance with Condition 8;
- (d) as constructed plans and a detailed site plan for each item of infrastructure or component of infrastructure specified in condition 3;
- (e) be signed by a person authorised to represent the works approval holder and contains the printed name and position of that person;
- (b) a review of the works approval holder's performance and compliance against the conditions of this works approval; and
- (c) where they have not been met, measures proposed to meet the manufacturer's design specifications and the conditions of this works approval, together with timeframes for implementing the proposed measures.

## Time limited operations phase

### Commencement and duration

11. The works approval holder may only commence time limited operations for the infrastructure and equipment identified in condition 3 where the Environmental Compliance Report as required by condition 9 has been submitted by the works approval holder for each item of infrastructure and equipment listed under condition 3.
12. The works approval holder may conduct time limited operations for an item of infrastructure specified in condition 3 (as applicable):
  - (a) for a period not exceeding 90 calendar days from the day the works approval holder meets the requirements of condition 11; or
  - (b) until such time as a registration application is received by the department, or a licence is granted for that item of infrastructure in accordance with Part V of the *Environmental Protection Act 1986*, if one is granted before the end of the period specified in condition 12(a).
13. During time limited operations, the works approval holder must ensure that the premises infrastructure and equipment listed in Table 3 is maintained and operated in accordance with the corresponding operational requirement set out in Table 3.

**Table 3: Infrastructure and equipment requirements during time limited operations**

Site infrastructure and equipment	Operational requirement
Additional row storage, pipework, fittings and pumps	Must be maintained in good working order and be free of leaks at all times.

## Time limited operations reporting

14. The works approval holder must submit to the CEO, a report on the time limited operations within 60 calendar days of the completion date of time limited operations or 60 calendar days before the expiration date of the works approval, whichever is sooner.
15. The works approval holder must ensure the report required by condition 14 includes the following:
  - (a) a summary of the time limited operations, including timeframes;
  - (b) a summary of any monitoring results obtained during time limited operations; and
  - (c) a summary of the environmental performance of all infrastructure as constructed or installed.

## Records and reporting (general)

16. The works approval holder must ensure that for all samples, analysis is undertaken by a holder of a current accreditation from the National Association of Testing Authorities (NATA) for the methods of sampling and analysis relevant to the corresponding parameters, unless otherwise specified in the relevant schedule.
17. The works approval holder must record the following information in relation to complaints received by the works approval holder (whether received directly from a complainant or forwarded to them by the Department or another party) about any alleged emissions from the premises:
  - (a) the name and contact details of the complainant, (if provided);
  - (b) the time and date of the complaint;
  - (c) the complete details of the complaint and any other concerns or other issues raised; and
  - (d) the complete details and dates of any action taken by the works approval holder to investigate or respond to any complaint.
18. The works approval holder must maintain accurate and auditable books including the following records, information, reports, and data required by this works approval:
  - (a) the works conducted in accordance with condition 3;
  - (b) any maintenance of infrastructure that is performed in the course of complying with condition 3;
  - (c) monitoring programmes undertaken in accordance with conditions 4 and 8
  - (d) complaints received under condition 17.
19. The books specified under condition 18 must:
  - (a) be legible;
  - (b) if amended, be amended in such a way that the original version(s) and any subsequent amendments remain legible and are capable of retrieval;
  - (c) be retained by the works approval holder for the duration of the works approval; and
  - (d) be available to be produced to an inspector or the CEO as required.

## Definitions

In this works approval, the terms in Table 4 have the meanings defined.

**Table 4: Definitions**

Term	Definition
acid sulfate soil	includes both sulfidic soil materials as potential acid sulfate soils and sulfuric soil materials as actual acid sulfate soils
Acid Sulfate Soils Management Guidelines	means the documents Department of Environment and Regulation 2015, <i>Identification and investigation of acid sulfate soils and acidic landscapes and Treatment and management of soils and water in acid sulfate soil landscapes</i>
Acid Sulfate Soils Management Plan	<i>Golder 2022 Appendix D Acid Sulfate Soils Management Plan</i>
ASS	mean acid sulfate soils
books	has the same meaning given to that term under the EP Act.
CEO	means Chief Executive Officer. CEO for the purposes of notification means: Director General Department administering the <i>Environmental Protection Act 1986</i> Locked Bag 10 Joondalup DC WA 6919 <a href="mailto:info@dwer.wa.gov.au">info@dwer.wa.gov.au</a>
Department	means the department established under section 35 of the <i>Public Sector Management Act 1994</i> and designated as responsible for the administration of Part V Division 3 of the EP Act.
Dewatering Management Plan	<i>Golder 2022 Appendix D Dewatering Management Plan</i>
discharge	has the same meaning given to that term under the EP Act.
emission	has the same meaning given to that term under the EP Act.
Environmental Compliance Report	means a report to satisfy the CEO that the conditioned infrastructure and/or equipment has been constructed and/or installed in accordance with the works approval.
EP Act	<i>Environmental Protection Act 1986 (WA).</i>
m(AHD)	means metres above Australian Height Datum
mBGL	means metres below ground level
monthly period	means a one-month period commencing from day 1 of a month until the last day of that month.

Term	Definition
NATA	means the National Association of Testing Authorities
NATA accredited	means in relation to the analysis of a sample, that the laboratory is NATA accredited for the specified analysis at the time of the analysis.
PASS	means potential Acid Sulfate Soils
premises	the premises to which this works approval applies, as specified at the front of this works approval and as shown on the premises map (Figure 1) in Schedule 1 to this works approval.
prescribed premises	has the same meaning given to that term under the EP Act.
suitably qualified professional engineer	Means a person who: <ul style="list-style-type: none"> <li>(a) holds a Bachelor of Engineering recognised by the Institute of Engineers; and</li> <li>(b) has a minimum of five years of experience working in a supervisory area of civil or structural engineering; and</li> <li>(c) is employed by an independent third party external to the works approval holder's business;</li> </ul> or is otherwise approved in writing by the CEO to act in this capacity
time limited operations	refers to the operation of the infrastructure and equipment identified under this works approval that is authorised for that purpose, subject to the relevant conditions.
works	refers to the works described in condition 7, at the premises shown in Schedule 1 of this works approval to be carried out on the premises, subject to the conditions.
works approval	refers to this document, which evidences the grant of the works approval by the CEO under section 54 of the EP Act, subject to the conditions.
works approval holder	refers to the occupier of the premises being the person to whom this works approval has been granted, as specified at the front of this works approval.
WWPS	Means waste water pumping station

---

## END OF CONDITIONS



## Schedule 1: Prescribed Premise Boundary

Coordinates: GDA 2020 Zone 50	
X	Y
407027.633	6473099.123
407049.594	6473098.064
407045.313	6473024.513
407024.326	6473025.436

Schedule 2: Maps

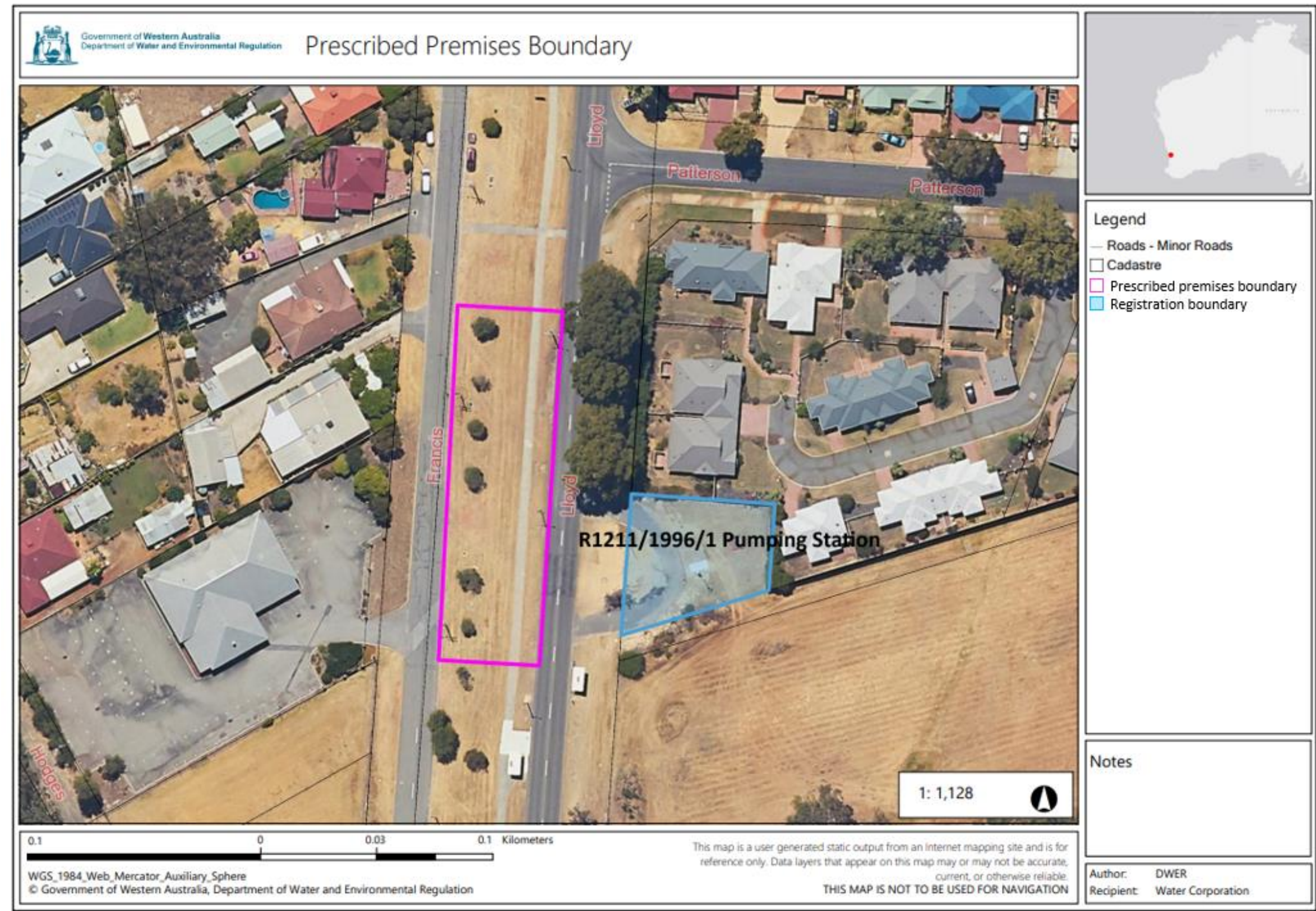


Figure 1: Premises Map



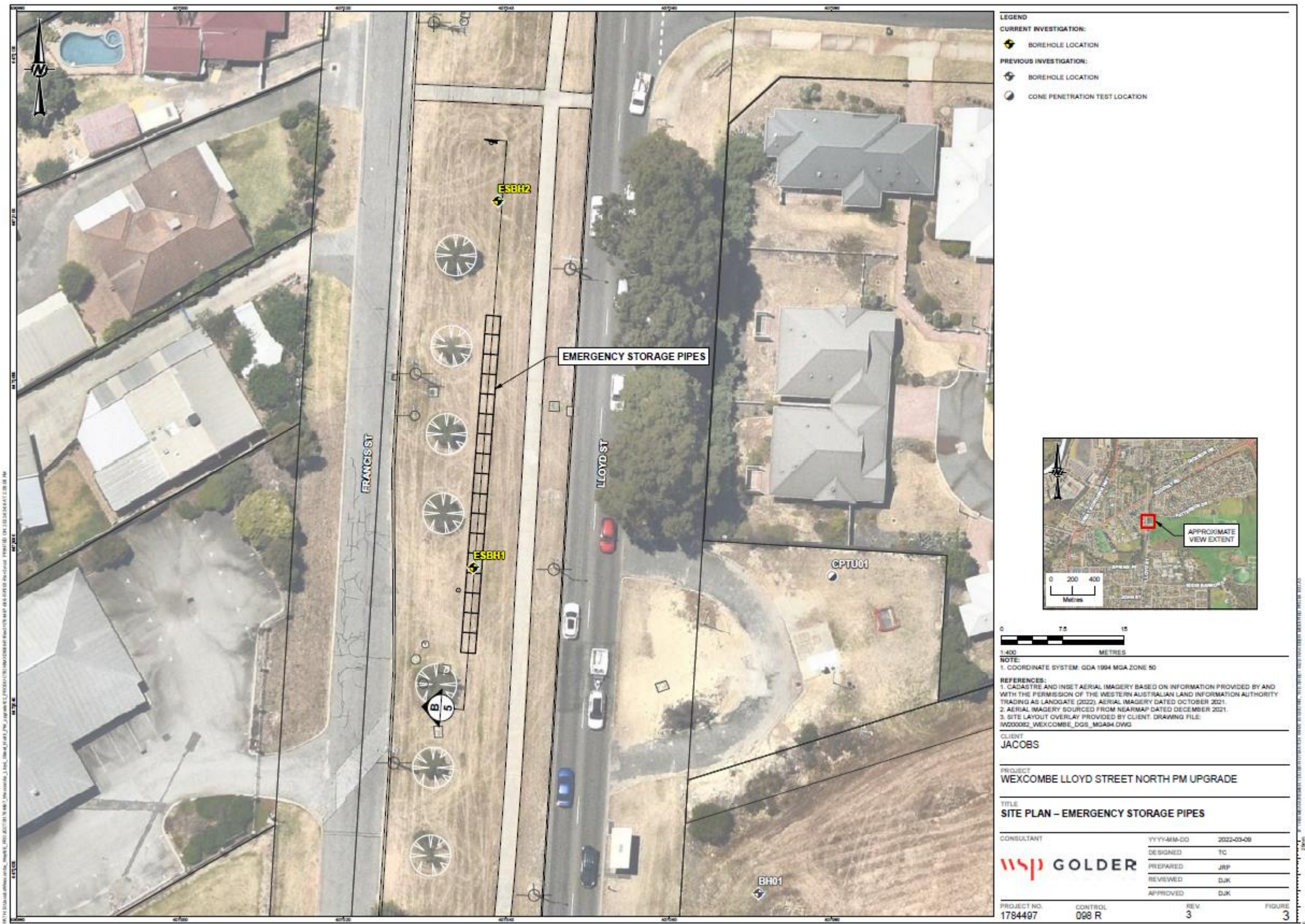


Figure 2: Infrastructure overview