



Works approval number	W6720/2022/1
Works approval holder	Mt Edwards Lithium Pty Ltd
ACN	56 613 827 311
Registered business address	Level 4, 220 St Georges Terrace PERTH WA 6000
DWER file number	DER2022/000324
Duration	2/11/2022 to 1/11/2027
Date of issue	2/11/2022
Premises details	Mount Edwards Project M15/99 and M15/101 Shire of Coolgardie As defined by the premises maps attached to this works approval

Prescribed premises category description (Schedule 1, <i>Environmental Protection Regulations 1987</i>)	Assessed design capacity
Category 6: Mine dewatering: premises on which water is extracted and discharged into the environment to allow mining of ore.	160,000 tonnes

This works approval is granted to the works approval holder, subject to the attached conditions, on 2 November 2022, by:

**A/MANAGER, RESOURCE INDUSTRIES
REGULATORY SERVICES**

an officer delegated under section 20 of the *Environmental Protection Act 1986* (WA)

Works approval history

Date	Reference number	Summary of changes
2/11/2022	W6720/2022/1	Works approval granted.

Interpretation

In this works approval:

- (a) the words 'including', 'includes' and 'include' in conditions mean "including but not limited to", and similar, as appropriate;
- (b) where any word or phrase is given a defined meaning, any other part of speech or other grammatical form of that word or phrase has a corresponding meaning;
- (c) where tables are used in a condition, each row in a table constitutes a separate condition;
- (d) any reference to an Australian or other standard, guideline, or code of practice in this works approval:
 - (i) if dated, refers to that particular version; and
 - (ii) if not dated, refers to the latest version and therefore may be subject to change over time;
- (e) unless specified otherwise, any reference to a section of an Act refers to that section of the EP Act; and
- (f) unless specified otherwise, all definitions are in accordance with the EP Act.

NOTE: This works approval requires specific conditions to be met but does not provide any implied authorisation for other emissions, discharges, or activities not specified in this works approval.

Works approval conditions

The works approval holder must ensure that the following conditions are complied with:

Construction phase

Infrastructure and equipment

1. The works approval holder must:
 - (a) construct the infrastructure;
 - (b) in accordance with the corresponding design and construction requirements; and
 - (c) at the corresponding infrastructure location.as set out in Table 1.

Table 1 Design and construction requirements

	Infrastructure	Design and construction requirements	Infrastructure location
1.	Dewatering pipelines from Armstrong pit to 132N pit	<ul style="list-style-type: none">4km of 150 mm High Density Polyethylene (HDPE).Pipeline is located within existing track, slightly below ground level and within 0.5m windrows either side.Pipeline fitted with leak detection instrumentation and flow meters.	As shown in Figure 1 and 2 of Schedule 1.
2.	Scour pits or Bund	<ul style="list-style-type: none">Capacity of bund and scour pit(s) to be sufficient to contain a spill for a period equal to the time between routine inspections.	

Compliance reporting

2. The works approval holder must within 30 calendar days of an item of infrastructure or equipment required by condition 1, Table 1 being constructed and/or installed:
 - (a) undertake an audit of their compliance with the requirements of condition 1; and
 - (b) prepare and submit to the CEO an Environmental Compliance Report on that compliance.
3. The Environmental Compliance Report required by condition 1, must include as a minimum the following:
 - (a) certification by a qualified professional engineer or environmental scientist that the items of infrastructure or component(s) thereof, as specified in condition 1, have been constructed in accordance with the relevant requirements specified in condition 1;
 - (b) as constructed plans and a detailed site plan for each item of infrastructure or component of infrastructure specified in condition 1; and
 - (c) be signed by a person authorised to represent the works approval holder and contains the printed name and position of that person.

Time limited operations phase

Commencement and duration

4. The works approval holder may only commence time limited operations for an item of infrastructure identified in condition 1 where the Environmental Compliance Report as required by condition 2 has been submitted by the works approval holder for that item of infrastructure.
5. The works approval holder may conduct time limited operations for an item of infrastructure specified in condition 1 (as applicable):
 - (a) for a period not exceeding 180 calendar days from the day the works approval holder meets the requirements of condition 4 for that item of infrastructure; or
 - (b) until such time as a licence for that item of infrastructure is granted in accordance with Part V of the *Environmental Protection Act 1986*, if one is granted before the end of the period specified in condition 5(a).
6. During time limited operations, the works approval holder must ensure that the emissions specified in Table 2, are discharged only from the corresponding emission point, within the specified limit and only at the corresponding discharge point location.

Table 2: Authorised discharge points and emission limits

Emission	Emission limit	Discharge point	Discharge point location
Armstrong In pit water	160,000 tonnes	132N pit	As shown in Figure 1 Schedule 1

7. During the time limited operational phase, the works approval holder must implement the controls specified in Table 3.

Table 3: Mine dewater discharge table

Column 1	Column 2
Site infrastructure and equipment	Operational controls
132N pit	<ul style="list-style-type: none">A maximum discharge of 160,000 tonnes/kL of water into 132N pit.A minimum vertical freeboard of 6 m must be maintained below the lower crest level at all times.Must be inspected monthly for freeboard capacity.A written log is required to be maintained for each inspection signed by the responsible person.
HDPE dewatering pipelines, scour pits and pontoon pump	<ul style="list-style-type: none">An inspection is required for visual integrity of pipelines, windrows/bunds, scour pits and leak detection system each 12 hourly shift.A written log is required to be maintained for each inspection, with the record of each inspection signed by the

	<p>responsible person.</p> <ul style="list-style-type: none"> • The leak detection system will operate based on measurement of pressure at valves fitted at both ends of the pipeline. Drop in pressure will result in instant stop of pump activity. • Pontoon pump fuel stored in self-bunded tank on pit ramp. • The works approval shall immediately recover, or remove and dispose of, spills of environmentally hazardous materials including fuel, oil, or other hydrocarbons. • to be maintained as per the design and construction / installation requirements in condition 1.
--	---

Monitoring during time limited operations

8. The works approval holder must monitor emissions during time limited operations in accordance with Table .

Table 4: Emissions and discharge monitoring during time limited operations

Column 1	Column 2	Column 3	Column 4
Location as defined in Figure 1	Parameter	Units	Frequency
132N pit	Volumetric flow rate	kL	Continuous
	pH ¹	-	Monthly
	Total dissolved solids ¹	mg/L	Monthly

Note 1: In-field non-NATA accredited analysis permitted.

9. The works approval holder must ensure that:
- Monthly monitoring is undertaken at least 15 days apart; and
 - All monitoring equipment used on the Premises to comply with the conditions of this works approval is calibrated in accordance with the manufacturer's specifications.
10. The works approval holder must submit to the CEO a report on the time limited operations within 30 calendar days of the completion date of time limited operations.
11. The works approval holder must ensure the report required by condition 10 includes the following:
- a summary of the time limited operations, including timeframes and kilolitres of water pumped;
 - a summary of monitoring results obtained during time limited operations under condition 8.
 - a review of performance and compliance against the conditions of the works approval; and

- (d) where the conditions of this works approval have not been met, what measures will the works approval holder take to meet them, and what timeframes will be required to implement those measures.

Records and reporting (general)

- 12.** The works approval holder must record the following information in relation to complaints received by the works approval holder (whether received directly from a complainant or forwarded to them by the Department or another party) about any alleged emissions from the premises:
 - (a) the name and contact details of the complainant, (if provided);
 - (b) the time and date of the complaint;
 - (c) the complete details of the complaint and any other concerns or other issues raised; and
 - (d) the complete details and dates of any action taken by the works approval holder to investigate or respond to any complaint.
- 13.** The works approval holder must maintain accurate and auditable books including the following records, information, reports, and data required by this works approval:
 - (a) the works conducted in accordance with condition 1;
 - (b) any maintenance of infrastructure that is performed in the course of complying with condition 7;
 - (c) monitoring programmes undertaken in accordance with condition 8; and
 - (d) complaints received under condition 12.
- 14.** The books specified under condition 13 must:
 - (a) be legible;
 - (b) if amended, be amended in such a way that the original version(s) and any subsequent amendments remain legible and are capable of retrieval;
 - (c) be retained by the works approval holder for the duration of the works approval; and
 - (d) be available to be produced to an inspector or the CEO as required.

Definitions

In this works approval, the terms in Table 5 have the meanings defined.

Table 5: Definitions

Term	Definition
AS/NZS 5667.1	Means the Australian Standard AS/NZS 5667.1 <i>Water Quality – Sampling – Guidance on the design of sampling programs, sampling techniques and the preservation and handling of samples</i>
books	has the same meaning given to that term under the EP Act.
CEO	means Chief Executive Officer. CEO for the purposes of notification means: Director General Department administering the <i>Environmental Protection Act 1986</i> Locked Bag 10 Joondalup DC WA 6919 info@dwer.wa.gov.au
Department	means the department established under section 35 of the <i>Public Sector Management Act 1994</i> and designated as responsible for the administration of Part V Division 3 of the EP Act.
Department Request	means a request for Books or other sources of information to be produced, made by an Inspector or the CEO to the Works Approval Holder in writing and sent to the Works Approval's address for notifications, as described at the front of this Works Approval, in relation to: (a) compliance with the EP Act or this Works Approval; (b) the Books or other sources of information maintained in accordance with this Works Approval; or (c) the Books or other sources of information relating to Emissions from the Premises.
discharge	has the same meaning given to that term under the EP Act.
emission	has the same meaning given to that term under the EP Act.
Environmental Compliance Report	means a report to satisfy the CEO that the conditioned infrastructure and/or equipment has been constructed and/or installed in accordance with the works approval.
EP Act	<i>Environmental Protection Act 1986</i> (WA).
EP Regulations	<i>Environmental Protection Regulations 1987</i> (WA).
premises	the premises to which this licence applies, as specified at the front of this licence and as shown on the premises map (Figure 1)

Term	Definition
	in Schedule 1 to this works approval.
prescribed premises	has the same meaning given to that term under the EP Act.
qualified professional engineer	As recognised by an Australian professional group or organisation to be competent in the duties required of an engineer.
time limited operations	refers to the operation of the infrastructure and equipment identified under this works approval that is authorised for that purpose, subject to the relevant conditions.
waste	has the same meaning given to that term under the EP Act.
works approval	refers to this document, which evidences the grant of the works approval by the CEO under section 54 of the EP Act, subject to the conditions.
works approval holder	refers to the occupier of the premises being the person to whom this works approval has been granted, as specified at the front of this works approval.

END OF CONDITIONS

Schedule 1: Maps

Premises map

The boundary of the prescribed premises is shown in the map below (Figure 1).

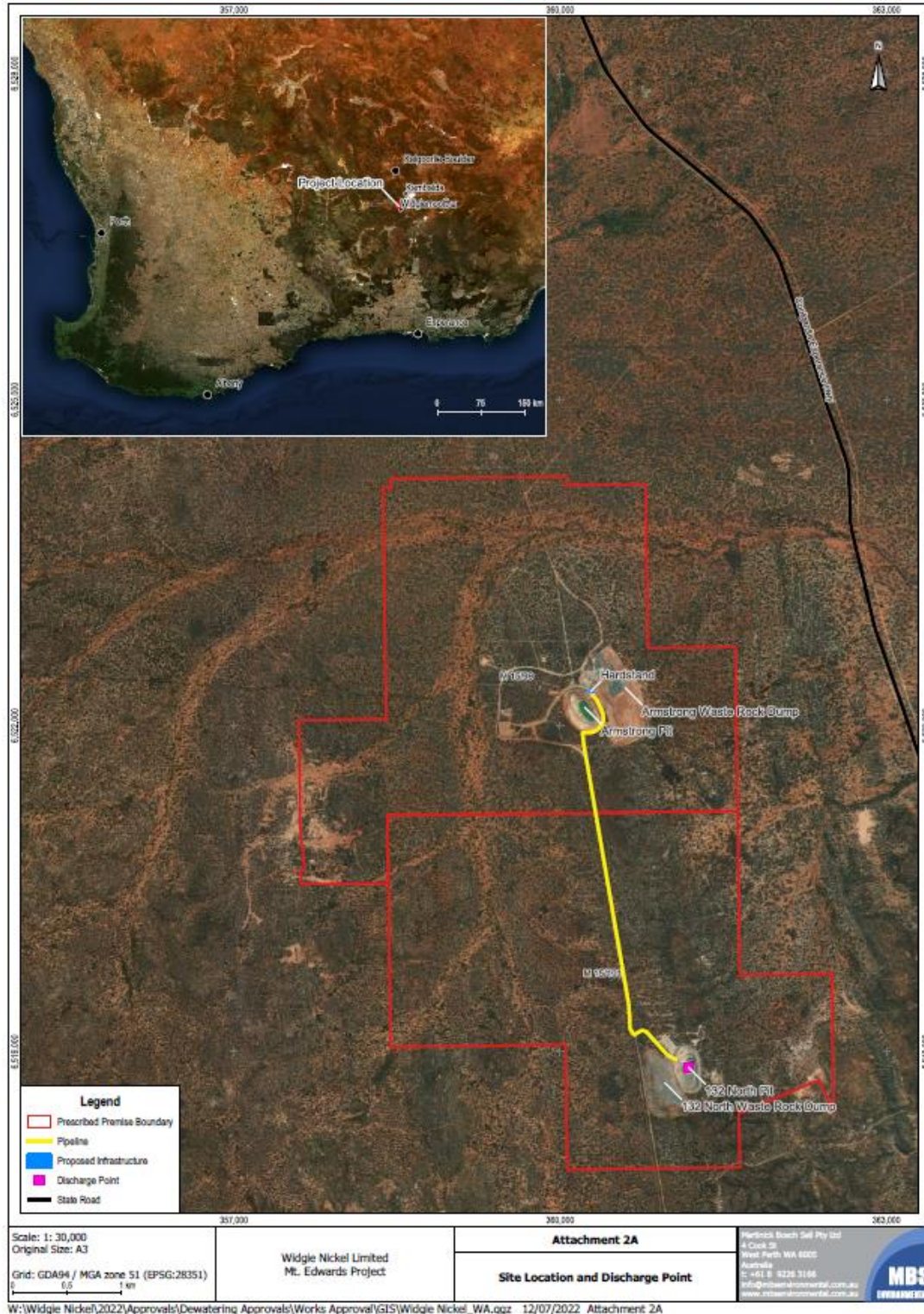


Figure 1: Map of the boundary of the prescribed premises and discharge point location.

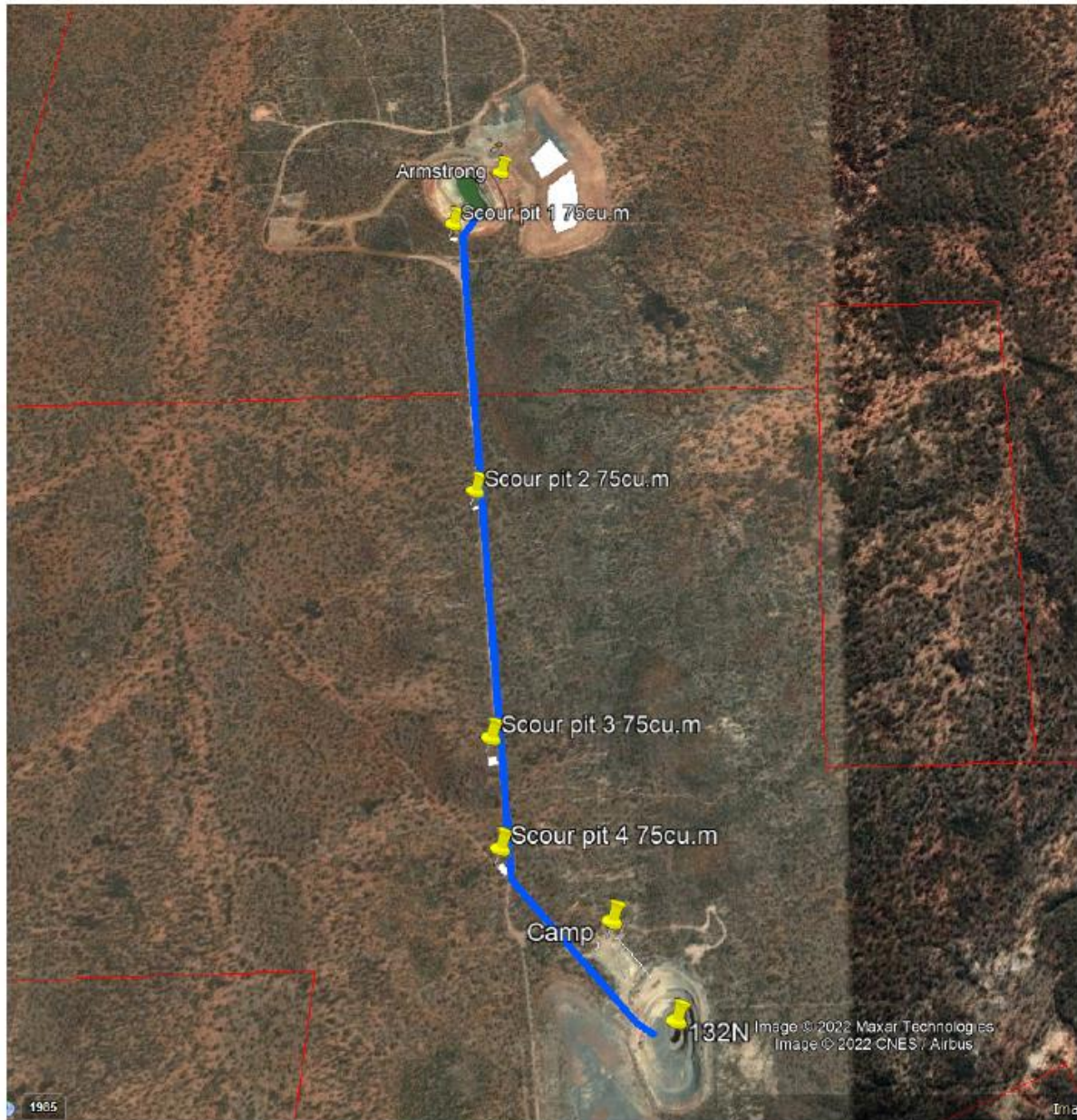


Figure 2: Indicative scour pit locations.