



<b>Works approval number</b>	W6646/2022/1
<b>Works approval holder</b>	Holcim (Australia) Pty Ltd
<b>ACN</b>	099 732 297
<b>Registered business address</b>	'Level 7 Tower' B, 799 Pacific Highway Chatswood New South Wales 2057
<b>DWER file number</b>	DER2021/000741
<b>Duration</b>	02/12/2022 to 01/12/2025
<b>Date of issue</b>	02/12/2022
<b>Premises details</b>	Holcim (Australia) Pty Ltd – Albany 25 Kelly Street ORANA WA 6330  Lot 101 on Diagram 093983 Lot 102 on Diagram 093983 As defined by the premises map in Schedule 1

<b>Prescribed premises category description</b> (Schedule 1, <i>Environmental Protection Regulations 1987</i> )	<b>Assessed production capacity</b>
Category 77: Concrete batching or cement products manufacturing: premises on which cement products or concrete are manufactured for use at places or premises other than those premises	116,000 tonnes per annum

This works approval is granted to the works approval holder, subject to the attached conditions, on 02/12/2022, by:

**MANAGER, PROCESS INDUSTRIES  
REGULATORY SERVICES**

an officer delegated under section 20 of the *Environmental Protection Act 1986* (WA)

## Works approval history

Date	Reference number	Summary of changes
02/12/2022	W6646/2022/1	Works approval granted.

## Interpretation

In this works approval:

- (a) the words 'including', 'includes' and 'include' in conditions mean "including but not limited to", and similar, as appropriate;
- (b) where any word or phrase is given a defined meaning, any other part of speech or other grammatical form of that word or phrase has a corresponding meaning;
- (c) where tables are used in a condition, each row in a table constitutes a separate condition;
- (d) any reference to an Australian or other standard, guideline, or code of practice in this works approval:
  - (i) if dated, refers to that particular version; and
  - (ii) if not dated, refers to the latest version and therefore may be subject to change over time;
- (e) unless specified otherwise, any reference to a section of an Act refers to that section of the EP Act; and
- (f) unless specified otherwise, all definitions are in accordance with the EP Act.

**NOTE:** This works approval requires specific conditions to be met but does not provide any implied authorisation for other emissions, discharges, or activities not specified in this works approval.

# Works approval conditions

The works approval holder must ensure that the following conditions are complied with:

## Construction phase

### Infrastructure and equipment

1. The works approval holder must:
  - (a) construct and/or install the infrastructure and/or equipment;
  - (b) in accordance with the corresponding design and construction / installation requirements; and
  - (c) at the corresponding infrastructure location as set out in Table 1.

**Table 1: Design and construction / installation requirements**

	Infrastructure	Design and construction / installation requirements	Infrastructure location
<b>Stage 1</b>			
1.	Mobile Concrete Batch Plant comprising: <ul style="list-style-type: none"><li>• 2 x mobile cement silos</li><li>• aggregate weigh hopper</li><li>• conveyors</li><li>• slump stand</li></ul>	<ul style="list-style-type: none"><li>• Concrete batching plant must have a maximum design capacity of 50 m<sup>3</sup>/hr.</li><li>• The concrete batching plant must have a paved area as per Figure 2, or the area must be treated with water or surfactants to minimize dust.</li><li>• Aggregate and sand feed hopper must be enclosed or fitted with wind shields, water sprays or a dust extraction system designed to prevent escape of visible dust.</li><li>• Conveyors must be covered or otherwise enclosed so that visible dust does not escape the conveyor.</li><li>• Each cement silo must be fitted with:<ul style="list-style-type: none"><li>- a relief valve which is piped to a weigh hopper or outlet within one meter of the ground to prevent overfilling;</li><li>- a level indicator with an audible high level alarm which sounds if cement reaches 0.6 m below the inlet to the silo's air cleaning system;</li><li>- a test circuit which indicates whether the level indicator and alarm are operating correctly;</li><li>- a reverse pulse air cleaning system which is designed to reduce dust emissions to less than 50 milligrams of particulate matter per cubic metre; and</li><li>- ducting which discharges air from the cement silo air cleaning system to within one metre of</li></ul></li></ul>	Schedule 1, Figure 2

	Infrastructure	Design and construction / installation requirements	Infrastructure location
		the ground.	
2.	Water management system: <ul style="list-style-type: none"> <li>washout box</li> <li>capture basin</li> </ul>	<ul style="list-style-type: none"> <li>The capture basin must have a minimum surface area of 15.04 m<sup>2</sup>.</li> <li>The temporary washout box edge pit must have a combined capacity of at least 15kL.</li> </ul>	
3.	Noise barrier walls	<ul style="list-style-type: none"> <li>Must install an acoustic barrier of the minimum height and at the location as depicted in Schedule 1, Figure 5.</li> </ul>	Schedule 1, Figure 5
<b>Stage 2</b>			
4.	Concrete Batch Plant comprising: <ul style="list-style-type: none"> <li>3 x cement silos (80m<sup>3</sup>)</li> <li>2 x aggregate weigh hopper</li> <li>conveyors</li> <li>slump stand</li> <li>load bay and tanker unloading area</li> </ul>	<ul style="list-style-type: none"> <li>Concrete batching plant must have a maximum design capacity of 66 m<sup>3</sup>/hr.</li> <li>The concrete batching plant must be located on a paved area or the area must be treated with water or surfactants to minimize dust.</li> <li>Aggregate and sand feed hopper must be enclosed or fitted with wind shields, water sprays or a dust extraction system designed to prevent escape of visible dust.</li> <li>Conveyors must be covered or otherwise enclosed so that visible dust does not escape the conveyor.</li> <li>Each cement silo must be fitted with: <ul style="list-style-type: none"> <li>- a relief valve which is piped to a weigh hopper or outlet within one meter of the ground to prevent overfilling;</li> <li>- a level indicator with an audible high level alarm which sounds if cement reaches 0.6 m below the inlet to the silo's air cleaning system;</li> <li>- a test circuit which indicates whether the level indicator and alarm are operating correctly;</li> <li>- a reverse pulse air cleaning system which is designed to reduce dust emissions to less than 50 milligrams of particulate matter per cubic metre; and</li> <li>- ducting which discharges air from the cement silo air cleaning system to within one metre of the ground.</li> </ul> </li> <li>A water truck must be available for dust suppression during construction of the Concrete Batch Plant and shall be operated as required to prevent any visible dust crossing the premises boundary.</li> </ul>	Schedule 1,
5.	Aggregate storage	<ul style="list-style-type: none"> <li>Storage piles/ aggregate storage bins must have</li> </ul>	

	Infrastructure	Design and construction / installation requirements	Infrastructure location
	comprising: <ul style="list-style-type: none"> <li>• 2 x coarse</li> <li>• 2 x fine</li> <li>• 4 x decorative</li> </ul>	water sprays capable of wetting the whole of the stockpile.	Figure 3 &
6.	Water management system: <ul style="list-style-type: none"> <li>• 3 x contaminated water collection pit</li> <li>• 3 x dirty water collection pit</li> <li>• washout box</li> <li>• stirrer pit</li> <li>• first flush pit</li> </ul>	<ul style="list-style-type: none"> <li>• Contaminated water collection pits and dirty water collection pits must have a minimum surface area of 10.03 m<sup>2</sup>.</li> <li>• The stirrer tank and the first flush pit must have a combined capacity of at least 75 kL.</li> </ul>	

	Infrastructure	Design and construction / installation requirements	Infrastructure location
			Figure 4
7.	Noise barrier walls	<ul style="list-style-type: none"> <li>Must install an acoustic barrier of the minimum height and at the location as depicted in Schedule 1, Figure 6.</li> </ul>	Schedule 1, Figure 6

### Compliance reporting

2. The works approval holder must within 30 calendar days of all items within each stage of infrastructure or equipment required by condition 1 being constructed and/or installed for each of Stage 1 and Stage 2:
  - (a) undertake an audit of their compliance with the requirements of condition 1 for that stage; and
  - (b) prepare and submit to the CEO an Environmental Compliance Report on that compliance for that stage.
3. The Environmental Compliance Report required by condition 2 for each of Stage 1 and Stage 2, must include as a minimum the following:
  - (a) certification that the items of infrastructure or equipment, as specified in condition 1 for that stage, have been constructed in accordance with the relevant requirements specified in condition 1;
  - (b) as constructed plans and a detailed site plan for each item of infrastructure or component of infrastructure specified in condition 1 for the stage; and
  - (c) be signed by a person authorised to represent the works approval holder and contains the printed name and position of that person.

### Time limited operations (mobile plant)

#### Commencement and duration

4. The works approval holder may only commence time limited operations of infrastructure Stage 1 identified in condition 1 where the Environmental Compliance Report for Stage 1 as required by condition 2 has been submitted by the works approval holder.
5. The works approval holder may conduct time limited operations of Stage 1 infrastructure specified in condition 1:

- (a) for a period not exceeding 365 calendar days from the day the works approval holder meets the requirements of condition 2 for Stage 1 infrastructure; or
  - (b) until such time as the works approval holder meets the requirements of condition 2 for Stage 2 infrastructure,
- whichever is sooner.

### Noise validation (permanent plant)

6. Following the submission of an Environmental Compliance Report required by condition 2 for Stage 2 infrastructure, the works approval holder must retain the services of a person qualified and experienced in the area of environmental noise assessment and who by their qualifications and experience is eligible to hold membership of the Australian Acoustical Society or the Australian Association of Acoustical Consultants to:
  - (a) investigate the nature and extent of noise emissions from the premises, including measurement of sound power levels for all noise sources associated with the operation of the Stage 2 permanent concrete batching plant;
  - (b) assess in accordance with the methodology required in the Environmental Protection (Noise) Regulations 1997, the compliance of the noise emissions from the premises, against the relevant assigned levels specified in those Regulations; and
  - (c) compile and submit to the works approval holder a report.
7. A report prepared pursuant to condition 6(c) is to include:
  - (a) a description of the methods used for monitoring and modelling of noise emissions from the premises;
  - (b) details and the results of the investigation undertaken pursuant to condition 6(a), and
  - (c) details and results of the assessment of the noise emissions from the premises, against the relevant assigned levels in the *Environmental Protection (Noise) Regulations 1997* undertaken pursuant to condition 6(b).
  - (d) comparison to the outcomes of predictive modelled noise emissions in:
    - (i) Herring Storer Acoustics 2022a *Acoustic Assessment Holcim Albany Redevelopment 25 Kelly Street, Como, Western Australia*; and
    - (ii) Herring Storer Acoustics 2022b *Acoustic Assessment Holcim Albany Redevelopment Temporary Mobile Batch Plant Locke Street, Como, Western Australia*.
  - (e) detail and timeframes for any corrective actions to further control noise emissions in the event that any results of noise monitoring indicates that compliance with the relevant assigned levels in the *Environmental Protection (Noise) Regulations 1997* has not been achieved.
8. The works approval holder must submit to the CEO a copy of the report prepared pursuant to condition 6(c) within six months of the submission of an Environmental Compliance Report required by condition 2 for Stage 2 infrastructure.

### Decommissioning phase

9. The works approval holder must within 30 calendar days of completion of Stage 1 time limited operations pursuant to condition 5:

- (a) remove from the premises the infrastructure or equipment for Stage 1 constructed and/or installed in accordance with condition 1; and
- (b) notify the CEO in writing confirming the removal of Stage 1 infrastructure or equipment, including:
  - (i) the date of removing the Stage 1 infrastructure;
  - (ii) photographic evidence confirming the removal of Stage 1 infrastructure; and
  - (iii) be signed by a person authorised to represent the works approval holder.

## Records and reporting (general)

- 10.** The works approval holder must record the following information in relation to complaints received by the works approval holder (whether received directly from a complainant or forwarded to them by the Department or another party) about any alleged emissions from the premises:
  - (a) the name and contact details of the complainant, (if provided);
  - (b) the time and date of the complaint;
  - (c) the complete details of the complaint and any other concerns or other issues raised; and
  - (d) the complete details and dates of any action taken by the works approval holder to investigate or respond to any complaint.
- 11.** The works approval holder must maintain accurate and auditable books including the following records, information, reports, and data required by this works approval:
  - (a) the works conducted in accordance with condition 1;
  - (b) validation of noise levels in accordance with condition(s) 6, 7 and 8; and
  - (c) complaints received under condition 10.
- 12.** The books specified under condition 11 must:
  - (a) be legible;
  - (b) if amended, be amended in such a way that the original version(s) and any subsequent amendments remain legible and are capable of retrieval;
  - (c) be retained by the works approval holder for the duration of the works approval; and
  - (d) be available to be produced to an inspector or the CEO as required.



## Definitions

In this works approval, the terms in Table 2 have the meanings defined.

**Table 2: Definitions**

Term	Definition
books	has the same meaning given to that term under the EP Act.
CEO	means Chief Executive Officer. CEO for the purposes of notification means: Director General Department administering the <i>Environmental Protection Act 1986</i> Locked Bag 10 Joondalup DC WA 6919 <a href="mailto:info@dwer.wa.gov.au">info@dwer.wa.gov.au</a>
Department	means the department established under section 35 of the <i>Public Sector Management Act 1994</i> and designated as responsible for the administration of Part V Division 3 of the EP Act.
discharge	has the same meaning given to that term under the EP Act.
emission	has the same meaning given to that term under the EP Act.
Environmental Compliance Report	means a report to satisfy the CEO that the conditioned infrastructure and/or equipment has been constructed and/or installed in accordance with the works approval.
EP Act	<i>Environmental Protection Act 1986</i> (WA).
EP Regulations	<i>Environmental Protection Regulations 1987</i> (WA).
premises	the premises to which this licence applies, as specified at the front of this licence and as shown on the premises map (Figure 1) in Schedule 1 to this works approval.
prescribed premises	has the same meaning given to that term under the EP Act.
Stage 1	means the discrete items of infrastructure identified in Table 1 for Stage 2
Stage 2	means the discrete items of infrastructure identified in Table 1 for Stage 2
time limited operations	refers to the operation of the infrastructure and equipment identified under this works approval that is authorised for that purpose, subject to the relevant conditions.
works approval	refers to this document, which evidences the grant of the works approval by the CEO under section 54 of the EP Act, subject to the conditions.
works approval holder	refers to the occupier of the premises being the person to whom this works approval has been granted, as specified at the front of this works approval.

---

## END OF CONDITIONS

## Schedule 1: Maps

### Premises map

The boundary of the prescribed premises is shown in the map below (Figure 1).

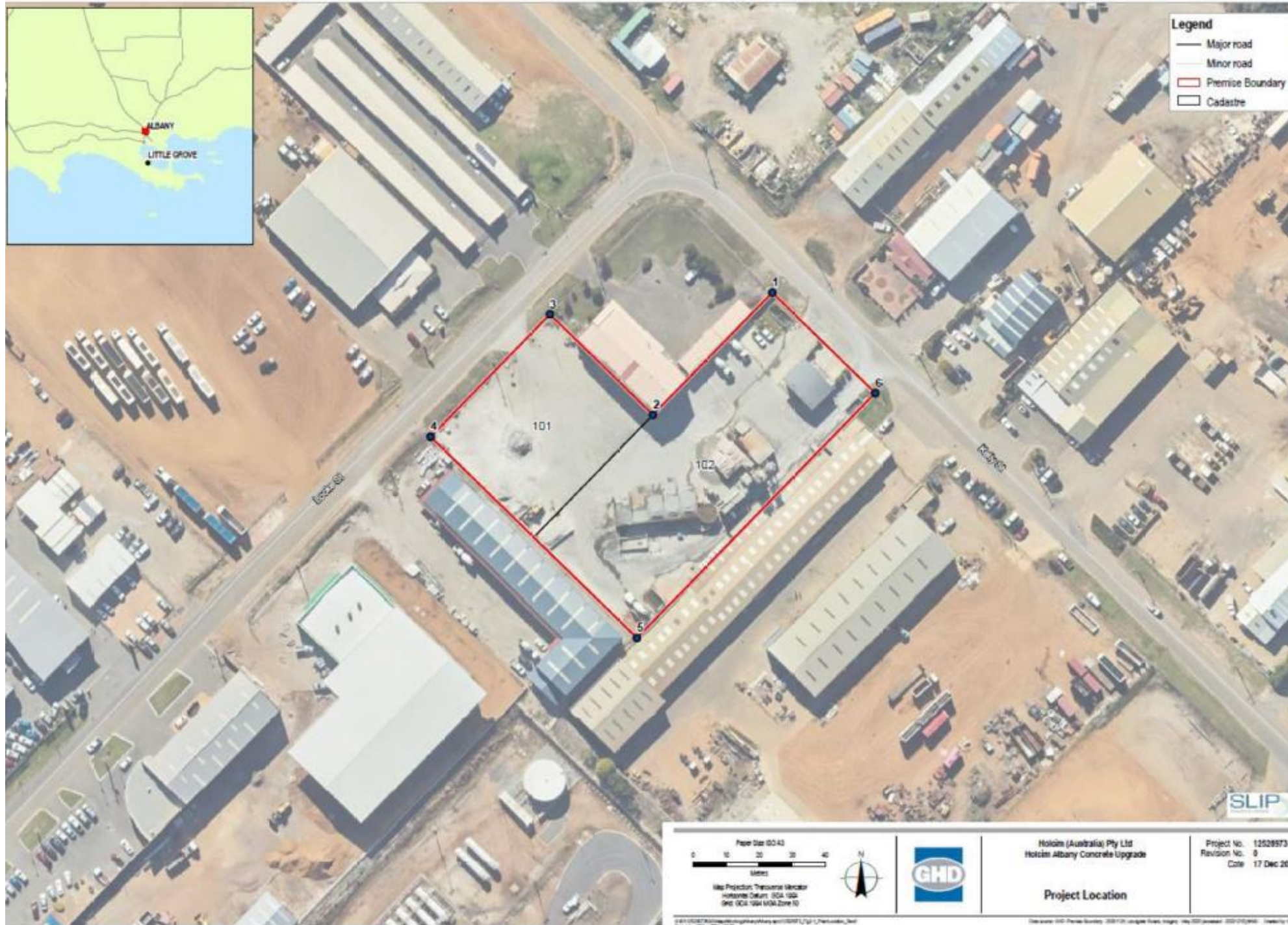


Figure 1: Map of the boundary of the prescribed premises



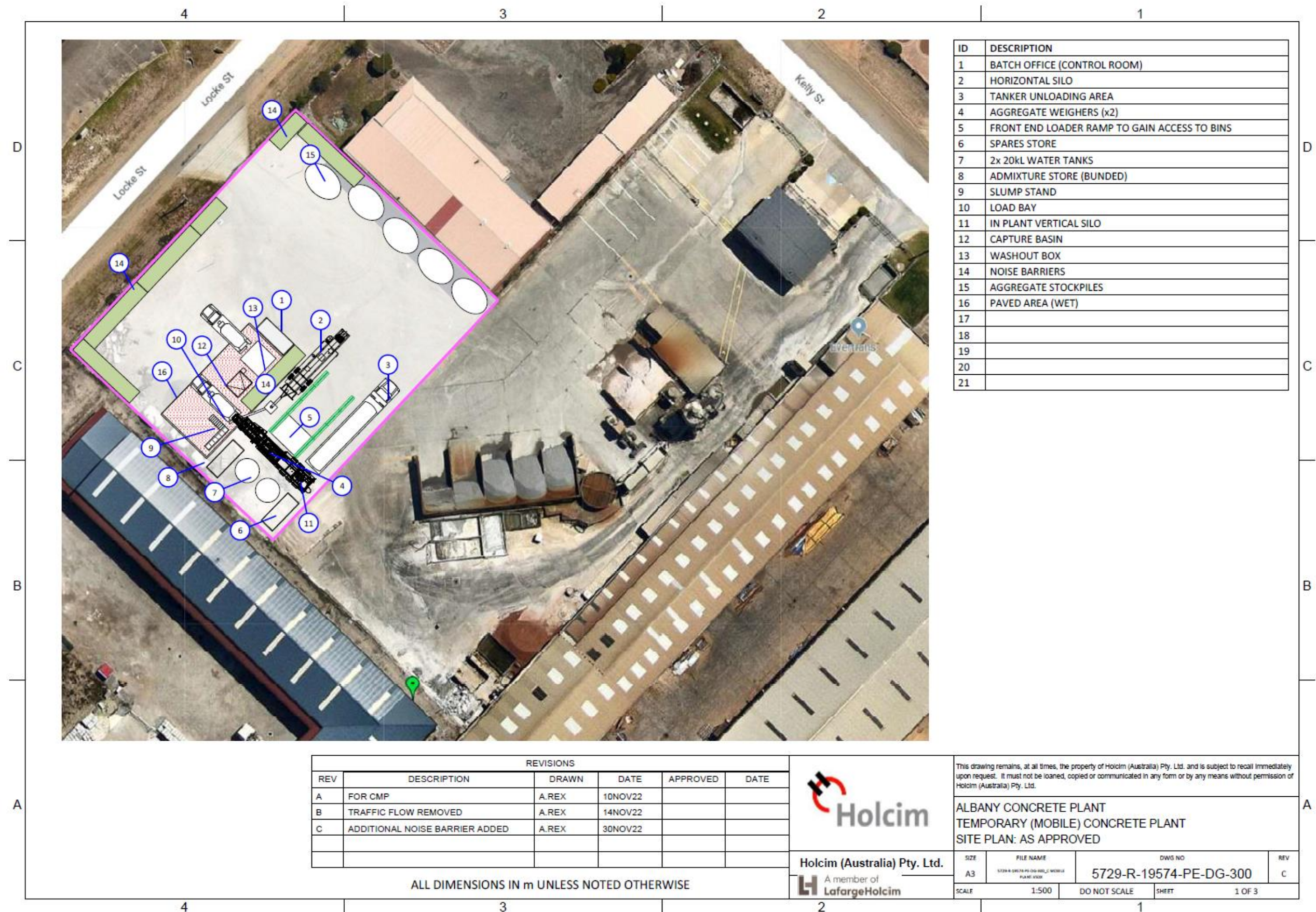


Figure 2: Layout of the temporary mobile concrete batching plant



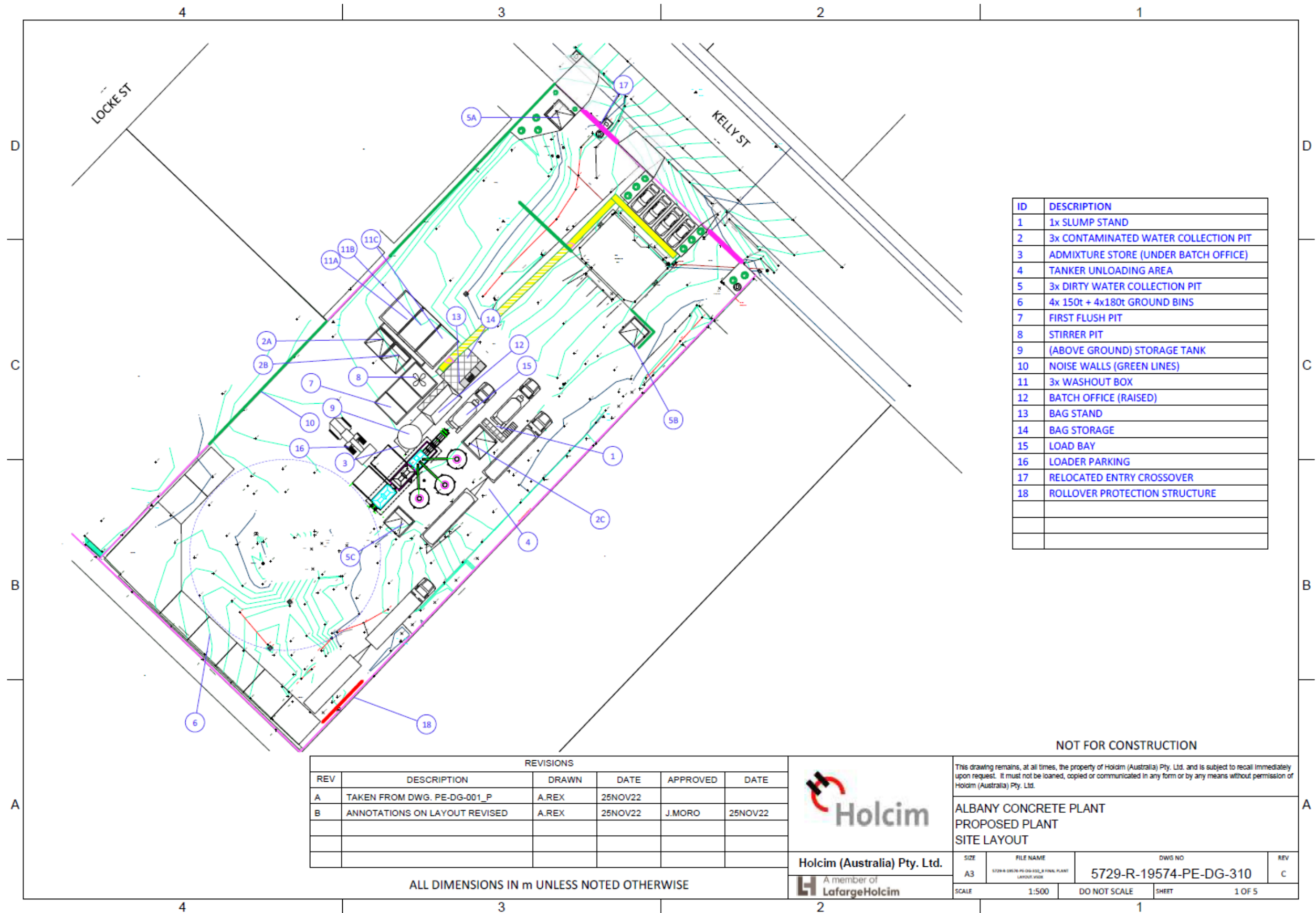


Figure 3: Layout of the permanent concrete batching plant

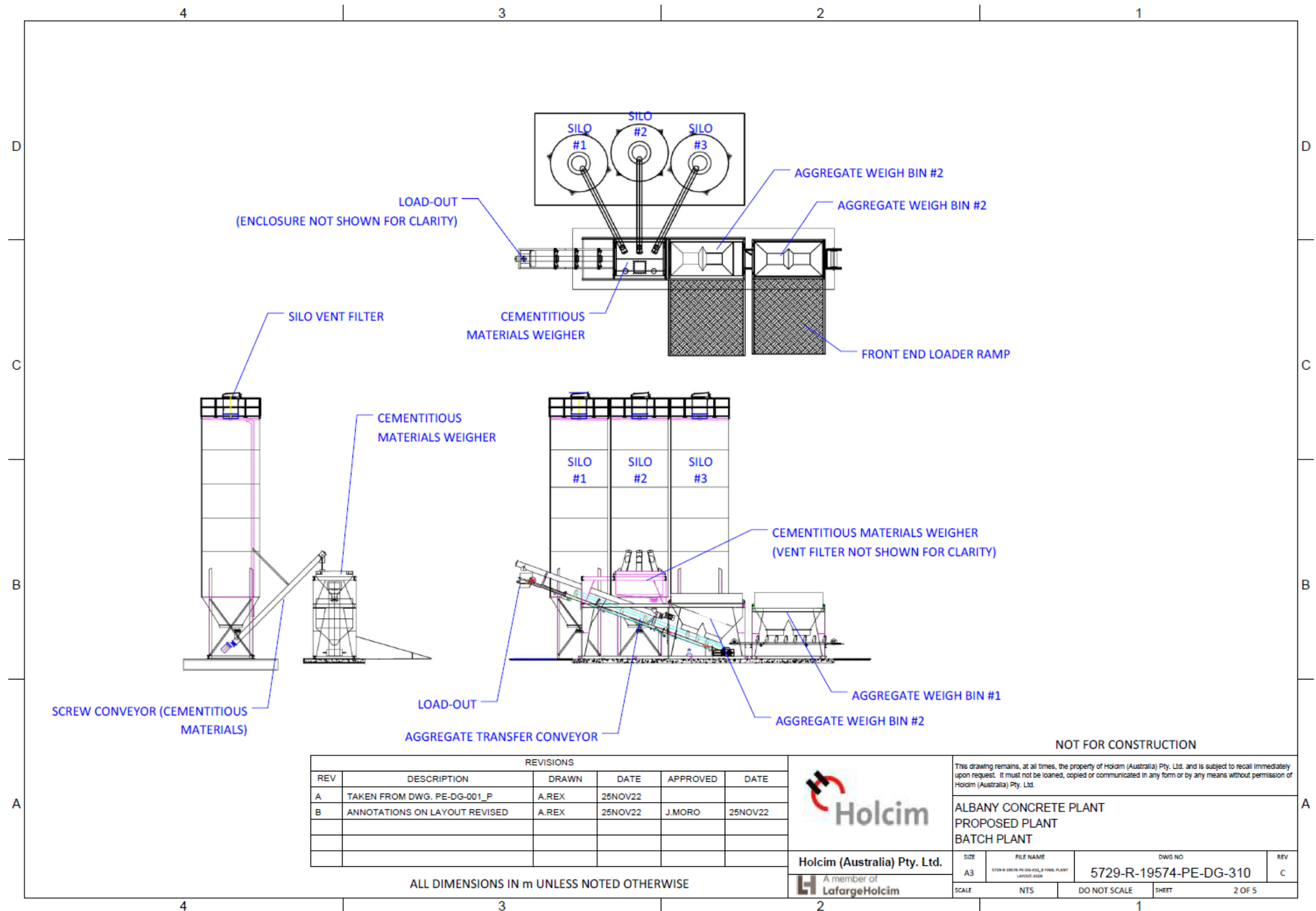


Figure 4: Infrastructure of the permanent concrete batching plant



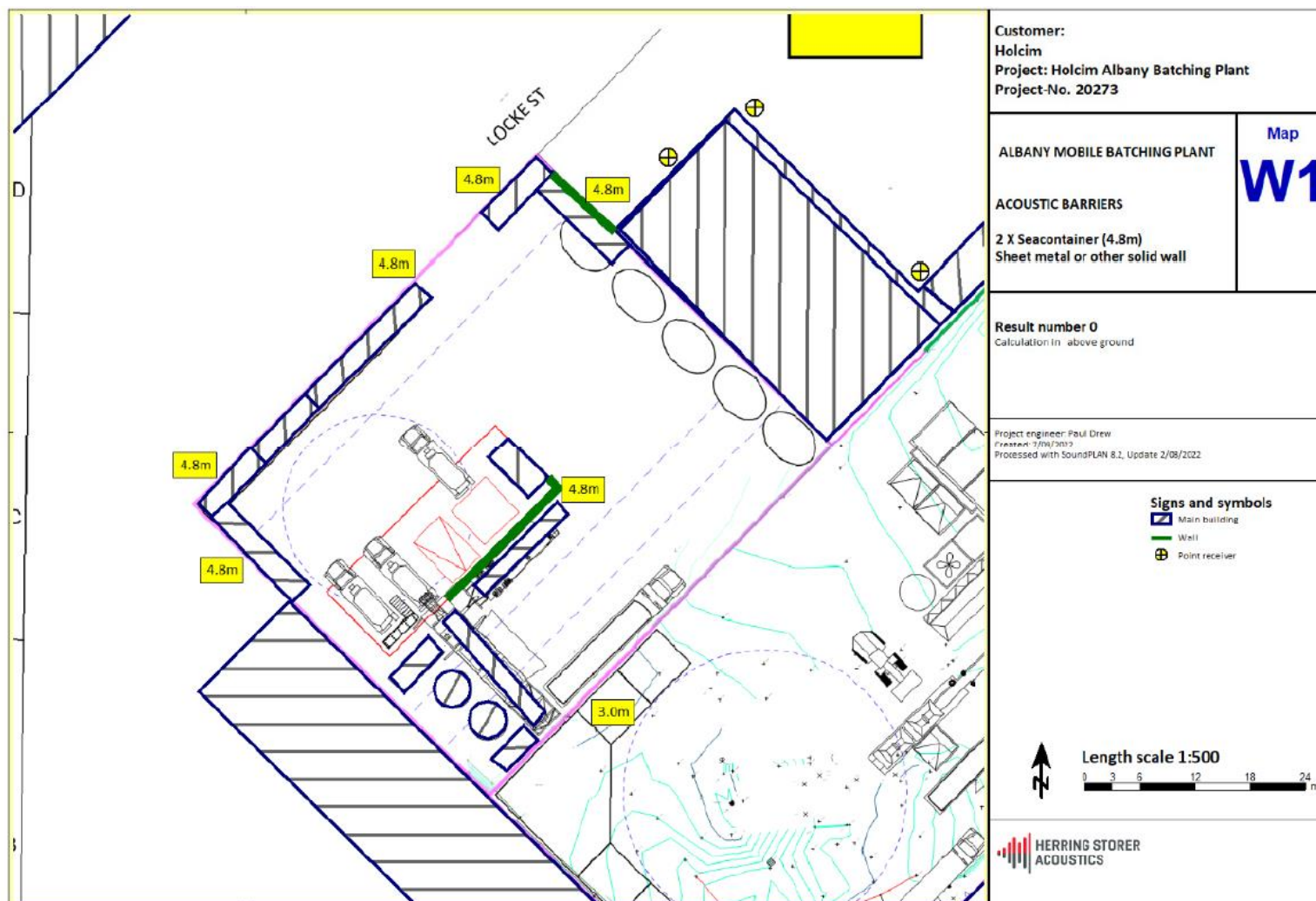


Figure 5: Noise wall locations for the temporary concrete batching plant



Figure 6: Noise wall locations for the permanent concrete batching plant