



Works Approval

Works approval number	W6645/2022/1
Works approval holder	Keppel Holdings Pty Ltd
ACN	009 076 519
Registered business address	50 Clune Street, BAYSWATER WA 6053
DWER file number	DER2021/000707
Duration	25/05/2022 to 25/05/2025
Date of issue	25/05/2022
Premises details	Keppel Holdings 159 Beechboro Road South EMBLETON WA 6062 Lot 502 on Diagram 50321 Certificate of Title Volume 1441 Folio 585 As defined by the coordinates in Schedule 1

Prescribed premises category description (Schedule 1, <i>Environmental Protection Regulations 1987</i>)	Assessed production capacity
Category 47: Scrap metal recovery	Less than 5000 tonnes per year
Category 62: Solid waste depot	

This works approval is granted to the works approval holder, subject to the attached conditions, on 2 December 2022, by:

Stephen Checker
MANAGER, WASTE INDUSTRIES
REGULATORY SERVICES

an officer delegated under section 20 of the *Environmental Protection Act 1986* (WA)

Works approval history

Date	Reference number	Summary of changes
25/05/2022	W6645/2022/1	Works approval granted.
2/12/2022	W6645/2022/1	Works approval transfer

Interpretation

In this works approval:

- (a) the words 'including', 'includes' and 'include' in conditions mean "including but not limited to", and similar, as appropriate;
- (b) where any word or phrase is given a defined meaning, any other part of speech or other grammatical form of that word or phrase has a corresponding meaning;
- (c) where tables are used in a condition, each row in a table constitutes a separate condition;
- (d) any reference to an Australian or other standard, guideline, or code of practice in this works approval:
 - (i) if dated, refers to that particular version; and
 - (ii) if not dated, refers to the latest version and therefore may be subject to change over time;
- (e) unless specified otherwise, any reference to a section of an Act refers to that section of the EP Act; and
- (f) unless specified otherwise, all definitions are in accordance with the EP Act.

NOTE: This works approval requires specific conditions to be met but does not provide any implied authorisation for other emissions, discharges, or activities not specified in this works approval.

Works approval conditions

The works approval holder must ensure that the following conditions are complied with:

Construction phase

Infrastructure and equipment

1. The works approval holder must:
 - (a) install the equipment;
 - (b) in accordance with the corresponding design and installation requirements; and
 - (c) at the corresponding infrastructure location, as set out in Table 1.

Table 1: Design and installation requirements

	Infrastructure	Design and installation requirements	Infrastructure location
1.	Semi enclosed processing building	The workshop must be constructed with the following specifications: <ul style="list-style-type: none">• Constructed of metal with a concrete, impermeable, base.• Semi enclosed.• The floor of the processing building is to meet a permeability of less than 1×10^{-9} m/s.• Hardstand to have a minimum 1% drainage gradient to ensure the free drainage to the sumps.	Schedule 1 Light processing area Compactor area Plasma cutting area
2.	Shear	Located inside the processing building; and maintained in accordance with manufacturers recommendations.	Schedule 1
3.	Bailer	Located inside the processing building; and maintained in accordance with manufacturers recommendations.	Schedule 1
4.	Excavator/Forklifts	Vehicle speeds limited to ≤ 10 km/ hour within the premises boundary; and maintained in accordance with manufacturers recommendations.	Schedule 1
5.	Diesel generator	Located on hardstand area; and maintained in accordance with manufacturers recommendations.	Schedule 1
6.	Sea containers	Constructed of metal; and Placed	Schedule 1

	Infrastructure	Design and installation requirements	Infrastructure location
		along the northeast and along the northwest site boundary for noise attenuation.	
7.	Fire hydrant	Are to be located close to the premises boundary, for use in the event of a fire; must provide the maximum hydraulic demand for a minimum of four hours; and minimum hydrant flow rate of 10L/s is provided at suitable pressure in accordance with AS2419.1.	Schedule 1
8.	Diesel tank	To be self-bunded and positioned on bitumen refueling area.	Schedule 1

Compliance reporting

2. The works approval holder must not depart from the requirements specified in Table 1 except:
 - (a) where such departure does not increase risks to public health, public amenity or the environment; and
 - (b) all other Conditions in this works approval are still satisfied.
3. The works approval holder must within 30 days of an item of infrastructure or equipment required by condition 1 being installed:
 - (a) undertake an audit of their compliance with the requirements of condition 1; and
 - (b) prepare and submit to the CEO an Environmental Compliance Report on that compliance.
4. Where a departure from the requirements specified in Table 1 occurs and is of a type allowed by condition 2, the works approval holder must provide to the CEO a description of, and explanation for, the departure along with the certification required by condition.

Fire and emergency management

5. The works approval holder must implement a Fire and Emergency Management Plan that is consistent with Australian Standard AS 3745. The plan must include, but is not limited to:
 - (a) notification procedures for fire and major spill incidents;
 - (b) how fires will be prevented, detected, responded to, suppressed, contained and controlled for all approved activities addressing all waste types and for all stages of the waste handling, sorting and storage process;
 - (c) in the event of a fire occurring at the premises, how impacts to the environment and human health will be mitigated;
 - (d) how staff will be trained in fire and emergency response on an ongoing, annual basis;

- (e) details on the firefighting equipment in place and/or accessible at the premises and the fire response capabilities and responsibilities;
- (f) a premises map displayed at the front of the premises depicting an after hours contact details, plus the location and layout of:
 - (i) fire hose reels, hydrants and isolation points;
 - (ii) electrical isolation points;
 - (iii) sub-surface drainage infrastructure, including details on flow direction and off-site discharge locations (if applicable);
 - (iv) system shutdown points; and
 - (v) fire response access points to the premises; and
- (g) hazmat manifest displayed at front of the premises.

Records and reporting (general)

6. The works approval holder must record the following information in relation to complaints received by the works approval holder (whether received directly from a complainant or forwarded to them by the Department or another party) about any alleged emissions from the premises:

- (a) the name and contact details of the complainant, (if provided);
- (b) the time and date of the complaint;
- (c) the complete details of the complaint and any other concerns or other issues raised; and
- (d) the complete details and dates of any action taken by the works approval holder to investigate or respond to any complaint.

7. The works approval holder must maintain accurate and auditable books including the following records, information, reports, and data required by this works approval:

- (a) the works conducted in accordance with condition 1;
- (b) complaints received under condition 6.

8. The books specified under condition 7 must:

- (a) be legible;
- (b) if amended, be amended in such a way that the original version(s) and any subsequent amendments remain legible and are capable of retrieval;
- (c) be retained by the works approval holder for the duration of the works approval; and
- (d) be available to be produced to an inspector or the CEO as required.

Definitions

In this works approval, the terms in Table 1 have the meanings defined.

Table 1: Definitions

Term	Definition
annual period	a 12 month period commencing from 1 May until 30 April of the immediately following year.
Australian Standard AS 1851	means Standards Australia AS 1851.2012 <i>Routine service of fire protection systems and equipment</i>
Australian Standard AS 2419.1	means Standards Australia AS 2419.1 <i>Fire hydrant installations Part 1: System design, installation and commissioning</i>
Australian Standard AS 3745	means Standards Australia AS 3745 <i>Planning for emergencies in facilities</i>
books	has the same meaning given to that term under the EP Act.
CEO	means Chief Executive Officer. CEO for the purposes of notification means: Director General Department administering the <i>Environmental Protection Act 1986</i> Locked Bag 10 Joondalup DC WA 6919 info@dwer.wa.gov.au
Department	means the department established under section 35 of the <i>Public Sector Management Act 1994</i> and designated as responsible for the administration of Part V Division 3 of the EP Act.
discharge	has the same meaning given to that term under the EP Act.
emission	has the same meaning given to that term under the EP Act.
Environmental Compliance Report	means a report to satisfy the CEO that the conditioned infrastructure and/or equipment has been constructed and/or installed in accordance with the works approval.
EP Act	<i>Environmental Protection Act 1986 (WA).</i>
EP Regulations	<i>Environmental Protection Regulations 1987 (WA).</i>
Fire and Emergency Management Plan	means a Fire and Emergency Management Plan that meets the requirements specified in condition 5 of this approval

Term	Definition
firewater	means water that, in the event of a fire, has been used to extinguish a fire, and all materials and combusting products dissolved or suspended within such water, and includes other fire suppressant substances such as foams.
premises	the premises to which this works approval applies, as specified at the front of this works approval and as shown on the premises map in Schedule 1 to this works approval.
prescribed premises	has the same meaning given to that term under the EP Act.
waste	has the same meaning given to that term under the EP Act.
works approval	refers to this document, which evidences the grant of the works approval by the CEO under section 54 of the EP Act, subject to the conditions.
works approval holder	refers to the occupier of the premises being the person to whom this works approval has been granted, as specified at the front of this works approval.

END OF CONDITIONS

Schedule 1: Maps

Premises map

The boundary of the prescribed premises is shown in the map below (Figure 1).

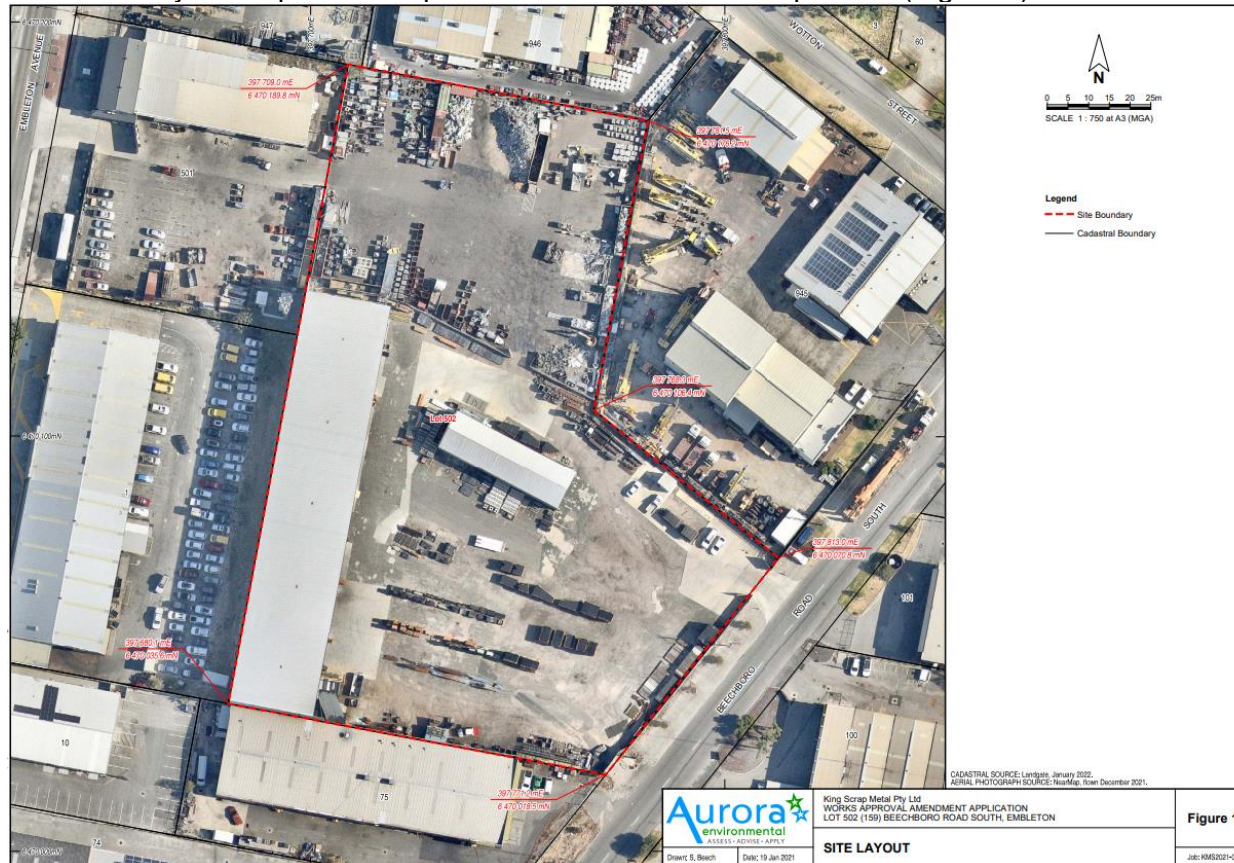


Figure 1: Map of the boundary of the prescribed premises

W6645/2022/1 (Amendment Date: 2 December 2022)
IR-T05 Works approval template (v5.0) (February 2020)



Figure 2: Site Map

W6645/2022/1 (Amendment Date: 2 December 2022)
IR-T05 Works approval template (v5.0) (February 2020)