



**Works approval number** W6565/2021/1

**Works approval holder** City of Albany

**ABN** 94 717 875 167

**Registered business address** 102 North Road  
YAKAMIA WA 6330

**DWER file number** DER2021/000215

**Duration** 23/07/2021 to 22/07/2025

**Date of issue** 23/07/2021

**Premises details** Bakers Junction Waste Management Facility  
1206 Chester Pass Road  
KALGAN WA 6030  
Legal description -  
Lot 7190 on Deposited Plan 175897

Prescribed premises category description (Schedule 1, <i>Environmental Protection Regulations 1987</i> )	Assessed production / design capacity
Category 61A: Solid waste facility: premises (other than premises within category 67A) on which solid waste produced on other premises is stored, reprocessed, treated or discharged onto land.	4,500 tonnes per annual period

This works approval is granted to the works approval holder, subject to the attached conditions, on 8 December 2022, by:

Abbie Crawford  
A/MANAGER, WASTE INDUSTRIES  
REGULATORY SERVICES

an officer delegated under section 20 of the *Environmental Protection Act 1986* (WA)

## Works approval history

Date	Reference number	Summary of changes
23/07/2021	W6565/2021/1	Works approval granted.
08/12/2022	W6565/2021/1	Works approval amended to add shredding of FOGO waste as an activity – Category 61A.

## Interpretation

In this works approval:

- (a) the words ‘including’, ‘includes’ and ‘include’ in conditions mean “including but not limited to”, and similar, as appropriate;
- (b) where any word or phrase is given a defined meaning, any other part of speech or other grammatical form of that word or phrase has a corresponding meaning;
- (c) where tables are used in a condition, each row in a table constitutes a separate condition;
- (d) any reference to an Australian or other standard, guideline, or code of practice in this works approval:
  - (i) if dated, refers to that particular version; and
  - (ii) if not dated, refers to the latest version and therefore may be subject to change over time;
- (e) unless specified otherwise, any reference to a section of an Act refers to that section of the EP Act; and
- (f) unless specified otherwise, all definitions are in accordance with the EP Act.

**NOTE:** This works approval requires specific conditions to be met but does not provide any implied authorisation for other emissions, discharges, or activities not specified in this works approval.

# Works approval conditions

The works approval holder must ensure that the following conditions are complied with:

## Construction phase

### Infrastructure and equipment

1. The works approval holder must:
  - (a) construct and/or install the infrastructure and/or equipment.
  - (b) in accordance with the corresponding design and construction / installation requirements.
  - (c) at the corresponding infrastructure location.
 as set out in Table 1.

**Table 1: Design and construction / installation requirements**

	Infrastructure	Design and construction requirements	Infrastructure location
<b>Stage 1</b>			
1.	Hardstand	initial 600m <sup>2</sup> hardstand instalment: (a) Constructed of concrete/asphalt with a minimum 2% fall that is capable of directing all water that has been in contact with FOGO waste materials to the leachate drainage system. (b) Designed and constructed to support, without sustained damage, the load of the material on it and any machinery used on the surface. (c) All asphalt and foundation compaction to be completed in accordance with the specifications listed in Schedule 1, Figure 2. (d) Surface and bunding (including joining seals) to be constructed to achieve a permeability of 1x10 <sup>-9</sup> m/s or less to prevent any potential leachate surface run-off and seepage.	As depicted in Schedule 1, Figures 1, 2 & 3
2.	Drainage infrastructure (hardstand to detention basin)	(a) A defined drainage channel is to be installed to direct all leachate surface run-off and seepage to the detention basin. (b) The drainage channel is to be lined to achieve a permeability of 1x10 <sup>-9</sup> m/s or less. (c) The drainage channel and associated infrastructure is to be designed to convey water from a 24-hour, rainfall event with an annual exceedance probability of 5% to the detention basin without overflow. (d) All pipework, fittings and joins are to be constructed of impervious material and free from leaks and defects (if applicable).	As depicted in Schedule 1, Figures 1, 2 & 3 (as indicative location only as design will require reworking)
3.	Detention basin	(a) The detention basin is to be designed to be able to store a 24-hour, rainfall event with an annual exceedance probability of 5% without utilising freeboard capacity. (b) Lined to achieve a permeability of 1x10 <sup>-9</sup> m/s or less. (c) Must be free from leaks and defects. (d) Must be provided with access points for the removal of wastewater where required to maintain basin	

	Infrastructure	Design and construction requirements	Infrastructure location
		freeboard.	
4.	Mobile shredder/grinder	(a) Must be located on the sealed hardstand (b) Must have a continuous discharge conveyor to feed shredded material directly into a sealed truck. (c) Throughput rate of 80-100 tonnes per hour.	As depicted in Schedule 1, Figures 1, 2 & 3
<b>Stage 2</b>			
	Hardstand expansion	Additional 400m <sup>2</sup> hardstand instalment: (a) Constructed of concrete/asphalt with a minimum 2% fall that is capable of directing all water that has been in contact with FOGO waste materials to the leachate drainage system. (b) Designed and constructed to support, without sustained damage, the load of the material on it and any machinery used on the surface. (c) All asphalt and foundation compaction to be completed in accordance with the specifications listed in Schedule 1, Figure 2. (d) Surface and bunding (including joining seals) to be constructed to achieve a permeability of 1x10 <sup>-9</sup> m/s or less to prevent any potential leachate surface run-off and seepage.	As depicted in Schedule 1, Figures 1, 2 & 3
<b>Stage 3</b>			
	Hardstand expansion	Final 1000m <sup>2</sup> instalment: (a) Constructed of concrete/asphalt with a minimum 2% fall that is capable of directing all water that has been in contact with FOGO waste materials to the leachate drainage system. (b) Designed and constructed to support, without sustained damage, the load of the material on it and any machinery used on the surface. (c) All asphalt and foundation compaction to be completed in accordance with the specifications listed in Schedule 1, Figure 2. (d) Surface and bunding (including joining seals) to be constructed to achieve a permeability of 1x10 <sup>-9</sup> m/s or less to prevent any potential leachate surface run-off and seepage.	As depicted in Schedule 1, Figures 1, 2 & 3

2. The works approval holder must not depart from the design and construction / installation requirements specified in Table 1 except where:
- where such a departure is minor in nature and does not materially change or affect the infrastructure.
  - such a departure does not increase risks to public health, public amenity or the environment.
  - all other conditions in this works approval are still satisfied.

## Environmental compliance reporting

3. The works approval holder must within 30 calendar days of an item of infrastructure required by condition 1 for Stage 1 being constructed and/or installed:
  - (a) undertake an audit of their compliance with the requirements of condition 1.
  - (b) prepare and submit to the CEO an Environmental Compliance Report on that compliance.
4. The works approval holder must within 30 calendar days of an item of infrastructure required by condition 1 for Stage 2 being constructed and/or installed:
  - (a) undertake an audit of their compliance with the requirements of condition 1.
  - (b) prepare and submit to the CEO an Environmental Compliance Report on that compliance.
5. The works approval holder must within 30 calendar days of an item of infrastructure required by condition 1 for Stage 3 being constructed and/or installed:
  - (a) undertake an audit of their compliance with the requirements of condition 1.
  - (b) prepare and submit to the CEO an Environmental Compliance Report on that compliance.
6. The Environmental Compliance Report required by condition 3, 4 and 5 must include as a minimum the following:
  - (a) certification by a suitably qualified person that the items of infrastructure or component(s) thereof, as specified in condition 1, have been constructed in accordance with the relevant requirements specified in condition 1.
  - (b) results of a liner integrity test and associated report prepared by a suitably qualified person.
  - (c) as constructed plans and a detailed site plan for each item of infrastructure or component of infrastructure specified in condition 1.
  - (d) labelled photographic evidence of the installation of the infrastructure.
  - (e) where a departure from the requirements in condition 1 occurs and is of a type allowed by condition 2, the works approval holder must provide a description of, and explanation for, the departure.
  - (f) be signed by a person authorised to represent the works approval holder and contains the printed name and position of that person.

## Time limited operations phase

### Commencement and duration

7. The works approval holder may only commence time limited operations for Stage 1 using infrastructure identified in condition 1 where the Environmental Compliance Report as required by condition 3 has been submitted by the works approval holder for Stage 1 infrastructure.
8. The works approval holder may conduct time limited operations for Stage 1 items of infrastructure specified in condition 1:
  - (a) for a period not exceeding 270 calendar days from the day the works approval holder meets the requirements of condition 3 for Stage 1 items of infrastructure: or

- (b) until such time, not exceeding the end of the period specified in condition 8 (a), as a licence for Stage 1 items of infrastructure specified in condition 1 is granted in accordance with Part V of the EP Act.

**Time limited operations requirements and emission limits**

- 9. During time limited operations, the works approval holder must only<sup>1</sup> accept onto the premises waste of a type that:
  - (a) does not exceed the rate at which that waste is received.
  - (b) meets the relevant acceptance specification.

as set out in Table 2:

Note 1: Excluding waste authorised to be accepted under licence.

**Table 2: Types of waste authorised to be accepted onto the premises during time limited operations**

Waste type	Rate at which waste is received	Acceptance specification
Food organics garden organics (FOGO) waste	No more than 4,500 tonnes per annual period	None specified

- 10. During time limited operations, where waste does not meet the waste acceptance criteria set out in condition 9, the works approval holder must:
  - (a) reject the waste.
  - (b) record the details of the:
    - (i) waste (type and description).
    - (ii) source of the waste load.
    - (iii) name of the waste carrier.
    - (iv) registration number of the delivery vehicle.
    - (v) date that the waste load was rejected.
  - (c) maintain accurate and auditable records of all waste loads rejected from the premises.
- 11. During time limited operations, the works approval holder must ensure that where waste does not meet the waste acceptance criteria set out in condition 9, it is removed from the premises by the delivery vehicle or stored in a quarantined storage area or container and transported for disposal to the onsite landfill or removed to an appropriately authorised facility as soon as practicable.
- 12. During time limited operations, the works approval holder must ensure that the waste type specified in Table 3, are only subjected to the corresponding process(es), subject to the corresponding process limits and/or specifications, as set out in Table 3.

**Table 3: Waste processing during time limited operations**

Waste type	Process(es)	Process limits and/or specifications
Food organics garden organics (FOGO) waste	Receipt, handling, sorting, shredding, and temporary storage prior to off-site processing or on-site disposal	<ul style="list-style-type: none"> <li>(a) All FOGO waste materials must only be processed on the hardstand (as depicted in Schedule 1).</li> <li>(b) Storage of FOGO waste is limited to 72 hours from the time of receipt.</li> <li>(c) FOGO stockpiles are to be no more than 5m high, 45m long, 10m wide and 2.5m away from the hardstand boundary.</li> <li>(d) FOGO stockpile moisture content is to be maintained at 25% or higher.</li> <li>(e) FOGO is to contain no more than 10% non-organic content (by weight) prior to removal from site for composting.</li> <li>(f) All non-organic and non-conforming waste removed from FOGO is to be contained in a vessel that is able to be covered, sealed and free from leaks.</li> <li>(g) All windblown waste is to be removed from fences, access roads and any other affected areas on a weekly basis.</li> <li>(h) Shredded FOGO waste is to be fed by conveyor directly into sealed trucks for transportation off site.</li> <li>(i) Storage of shredded FOGO waste in sealed trucks is limited to 24 hours from the time of shredding prior to being transported offsite for further processing.</li> </ul>

13. During time limited operations, the works approval holder must ensure that the premises infrastructure and equipment listed in Table 4 and located at the corresponding infrastructure location is maintained and operated in accordance with the corresponding operational requirement set out in Table 4.

**Table 4: Infrastructure and equipment requirements during time limited operations**

	Infrastructure and equipment	Operational requirement	Infrastructure location
1.	Hardstand	<ul style="list-style-type: none"> <li>(a) The integrity of the surface and bunding (including joining seals) to be maintained free from cracks and defects.</li> <li>(b) All liquid runoff, leachate or seepage from the FOGO processing hardstand is to be directed into the lined drainage infrastructure.</li> </ul>	As depicted in Schedule 1, Figures 1, 2 & 3
2.	Drainage infrastructure (hardstand to detention basin)	<ul style="list-style-type: none"> <li>(a) The integrity of the drainage channel connecting the hardstand to the detention basin to be maintained.</li> <li>(b) vegetation and debris (emergent or otherwise) is prevented from blocking or encroaching onto the drainage channel.</li> </ul>	
3.	Detention basin	<ul style="list-style-type: none"> <li>(a) a freeboard <math>\geq</math> 500mm is maintained.</li> <li>(b) overtopping of the detention basin does not occur.</li> <li>(c) the integrity of the containment infrastructure is maintained.</li> <li>(d) vegetation and floating debris (emergent or otherwise) is prevented from encroaching onto</li> </ul>	

	Infrastructure and equipment	Operational requirement	Infrastructure location
		the detention basin surface or inner basin embankments. (e) Any leachate drained from the detention basin must be removed for disposal or treatment to an appropriately licensed offsite facility.	
4.	Mobile shredder/grinder	(a) Must be maintained in good working order in accordance with the manufacturer's specifications	

### Monitoring during time limited operations

14. During time limited operations, the works approval holder must record the total amount of waste accepted onto and removed from the premises for the waste type listed in Table 5, in the corresponding unit, and for the corresponding time period, as set out in Table 5.

**Table 5: Waste input and output monitoring**

Waste type	Unit	Time period
Food organics garden organics (FOGO) waste	Tonnes	Each load arriving at and leaving the Premises

### Compliance reporting

15. The works approval holder must submit to the CEO a report on the time limited operations within 30 calendar days of the completion date of time limited operations or 30 calendar days before the expiration date of the works approval, whichever is the sooner.
16. The works approval holder must ensure the report required by condition 15 includes the following:
- a summary of the time limited operations, including timeframes and amount of material processed.
  - a summary of the environmental performance of all infrastructure as constructed or installed (as applicable).
  - a review of performance and compliance against the conditions of the works approval.
  - where the manufacturer's design specifications and the conditions of this works approval have not been met, what measures will the works approval holder take to meet them, and what timeframes will be required to implement those measures.

### Records and reporting

17. The works approval holder must record the following information in relation to complaints received by the works approval holder (whether received directly from a complainant or forwarded to them by the Department or another party) about any alleged emissions from the premises:
- the name and contact details of the complainant, (if provided).
  - the time and date of the complaint.



- (c) the complete details of the complaint and any other concerns or other issues raised.
  - (d) the complete details and dates of any action taken by the works approval holder to investigate or respond to any complaint.
- 18.** The works approval holder must maintain accurate and auditable books including the following records, information, reports, and data required by this works approval:
- (a) the works conducted in accordance with condition 1.
  - (b) any maintenance of infrastructure that is performed in the course of complying with condition 13.
  - (c) monitoring programmes undertaken in accordance with condition 14.
  - (d) complaints received under condition 17.
- 19.** The books specified under condition 18 must:
- (a) be legible.
  - (b) if amended, be amended in such a way that the original version(s) and any subsequent amendments remain legible and are capable of retrieval.
  - (c) be retained by the works approval holder for the duration of the works approval.
  - (d) be available to be produced to an inspector or the CEO as required.

## Definitions

In this works approval, the terms in Table 6 have the meanings defined.

**Table 6: Definitions**

Term	Definition
annual period	a 12-month period commencing from 1 January until 31 December of the same year.
books	has the same meaning given to that term under the EP Act.
CEO	means Chief Executive Officer. CEO for the purposes of notification means: Director General Department administering the <i>Environmental Protection Act 1986</i> Locked Bag 10 Joondalup DC WA 6919 <a href="mailto:info@dwer.wa.gov.au">info@dwer.wa.gov.au</a>
Department	means the department established under section 35 of the <i>Public Sector Management Act 1994</i> and designated as responsible for the administration of Part V Division 3 of the EP Act.
discharge	has the same meaning given to that term under the EP Act.
emission	has the same meaning given to that term under the EP Act.
Environmental Compliance Report	means a report to satisfy the CEO that the conditioned infrastructure has been constructed and installed in accordance with the works approval.
EP Act	<i>Environmental Protection Act 1986 (WA)</i> .
EP Regulations	<i>Environmental Protection Regulations 1987 (WA)</i> .
FOGO	means a source separated mixture of food organics and garden organics collected from bins designated for this purpose.
premises	the premises to which this works approval applies, as specified at the front of this works approval and as shown on the premises map (Figure 1) in Schedule 1 to this works approval.
prescribed premises	has the same meaning given to that term under the EP Act.

Term	Definition
Stage 1	refers to the works listed as Stage 1 in Table 1.
Stage 2	refers to the works listed as Stage 2 in Table 1.
Stage 3	refers to the works listed as Stage 3 in Table 1.
suitability qualified person	<p>in relation to:</p> <ul style="list-style-type: none"> <li>• hardstand certification, means a suitably qualified civil or structural engineer who: <ul style="list-style-type: none"> <li>○ holds a Bachelor of Engineering recognised by Engineers Australia.</li> <li>○ has a minimum of five years of experience working in a supervisory area of civil engineering.</li> </ul> </li> <li>• Clay liner certification, means a suitably qualified civil, or geotechnical engineer who: <ul style="list-style-type: none"> <li>○ holds a Bachelor of Engineering recognised by Engineers Australia.</li> <li>○ has a minimum of five years of experience working in a supervisory area of civil or geotechnical engineering.</li> </ul> </li> <li>• Synthetic membrane liner certification, means a suitably qualified professional working in the area of liner installation and testing of synthetic membranes with a minimum of 5 years' experience.</li> </ul>
time limited operations	refers to the operation of the infrastructure and equipment identified under this works approval that is authorised for that purpose, subject to the relevant conditions.
waste	has the same meaning given to that term under the EP Act.
works approval	refers to this document, which evidences the grant of the works approval by the CEO under section 54 of the EP Act, subject to the conditions.
works approval holder	refers to the occupier of the premises being the person to whom this works approval has been granted, as specified at the front of this works approval.

---

**END OF CONDITIONS**



# Schedule 1: Maps

## Premises map

The boundary of the prescribed premises is shown in the map below (Figure 1).

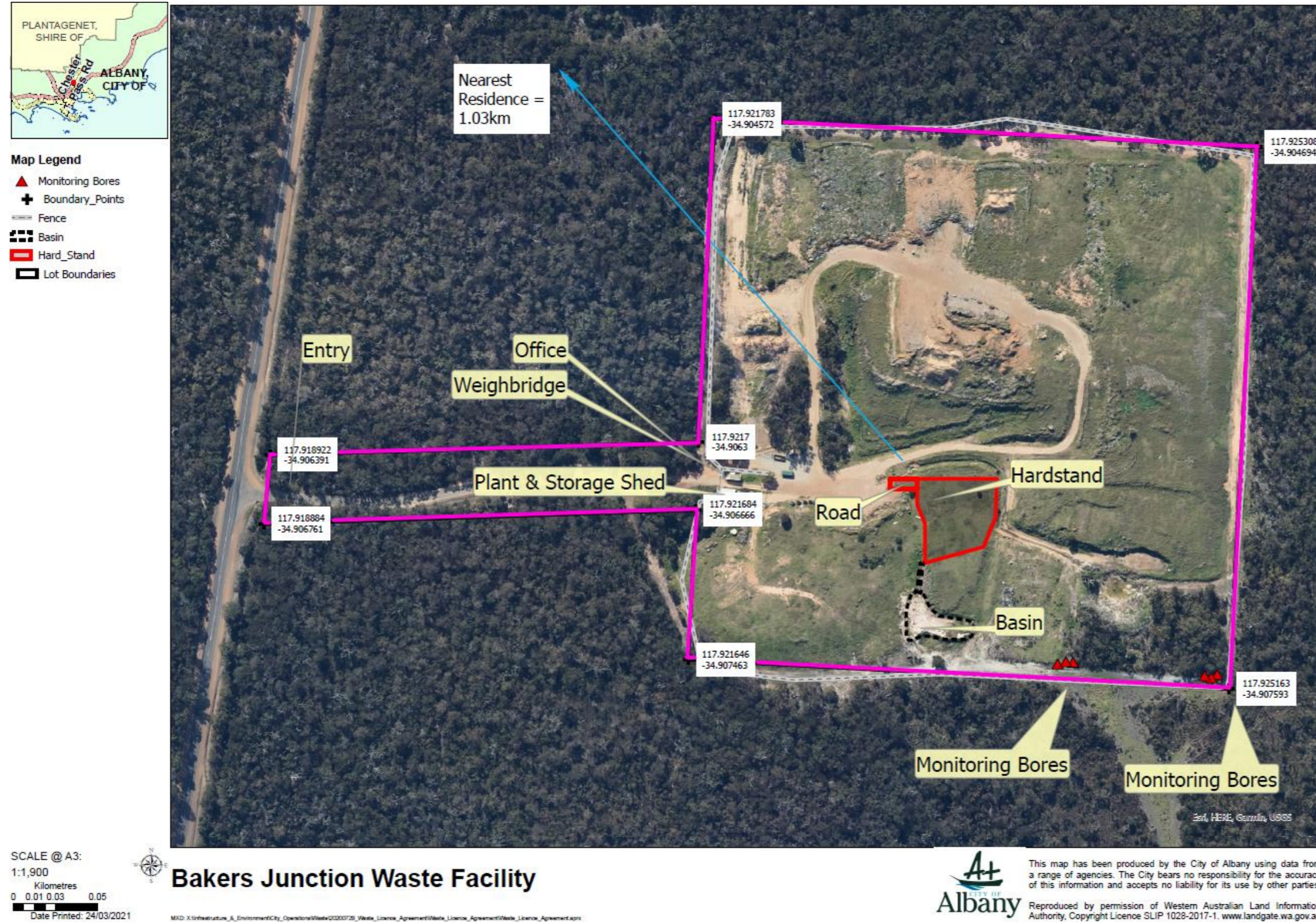


Figure 1: Map of the boundary of the prescribed premises



## Hardstand layout map

The proposed final hardstand is shown in the map below (Figure 2).

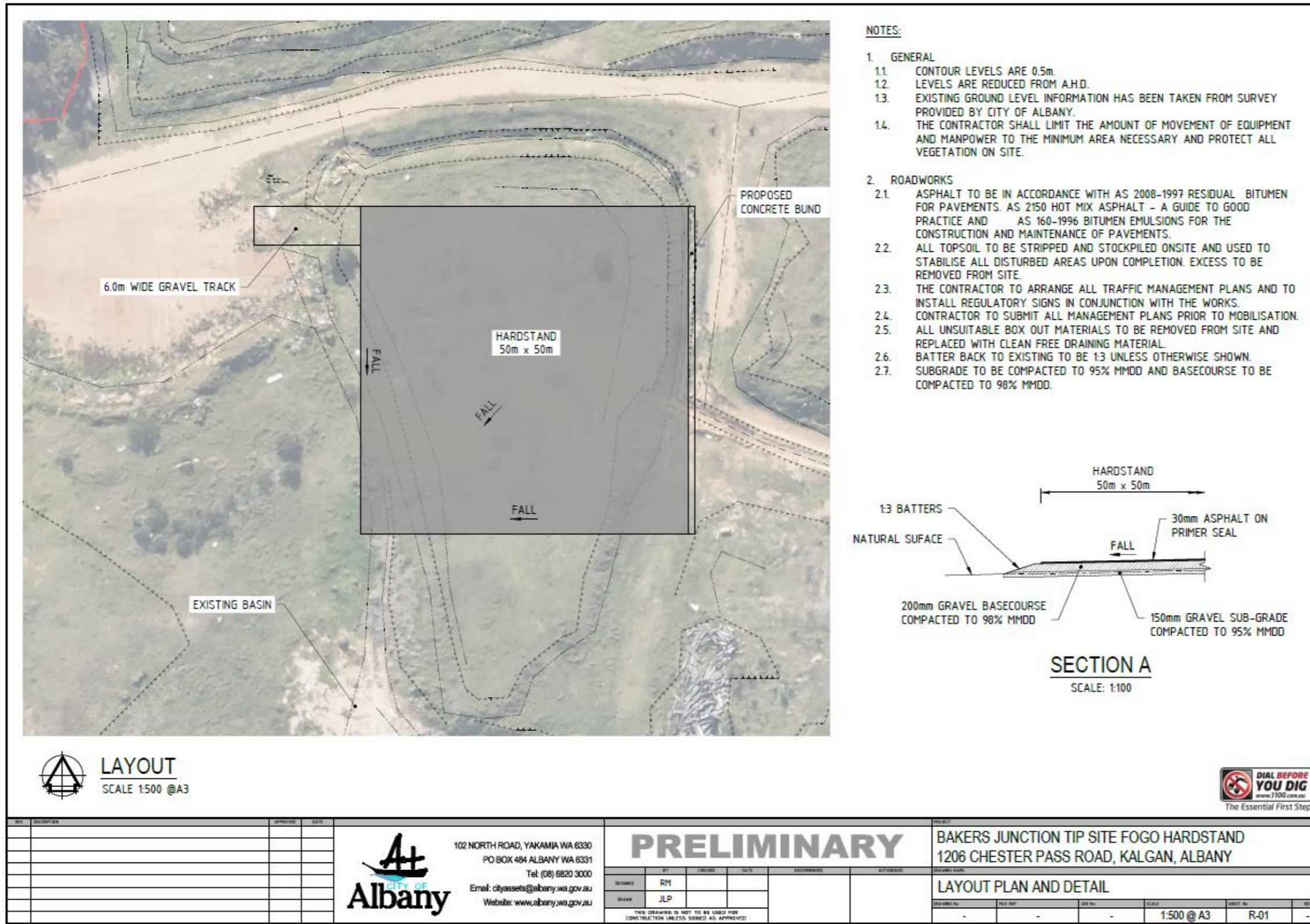


Figure 2: Site layout of the proposed final hardstand



### Hardstand and detention basin layout map

The proposed stage 1 hardstand and detention basin is shown in the map below (Figure 3).

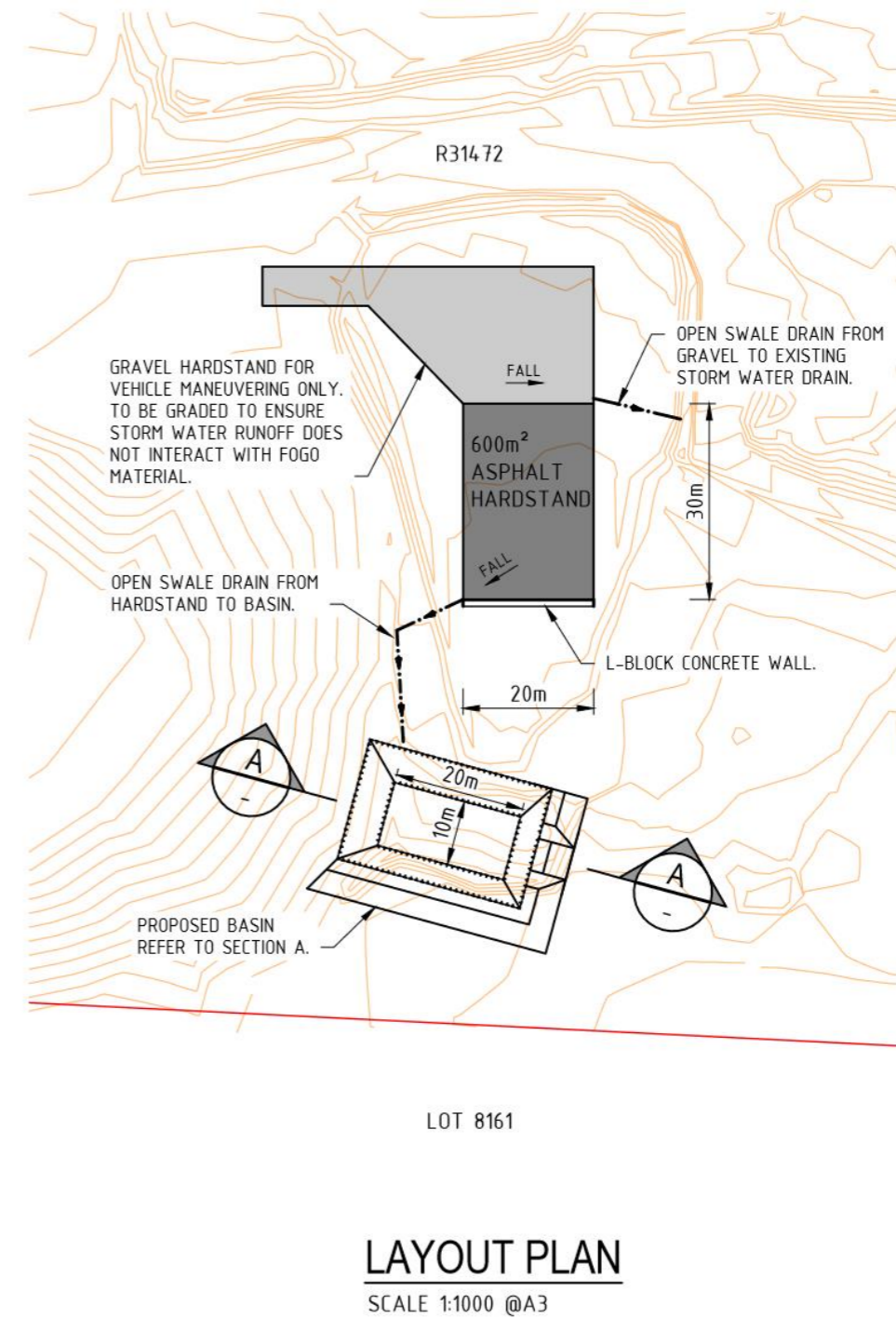
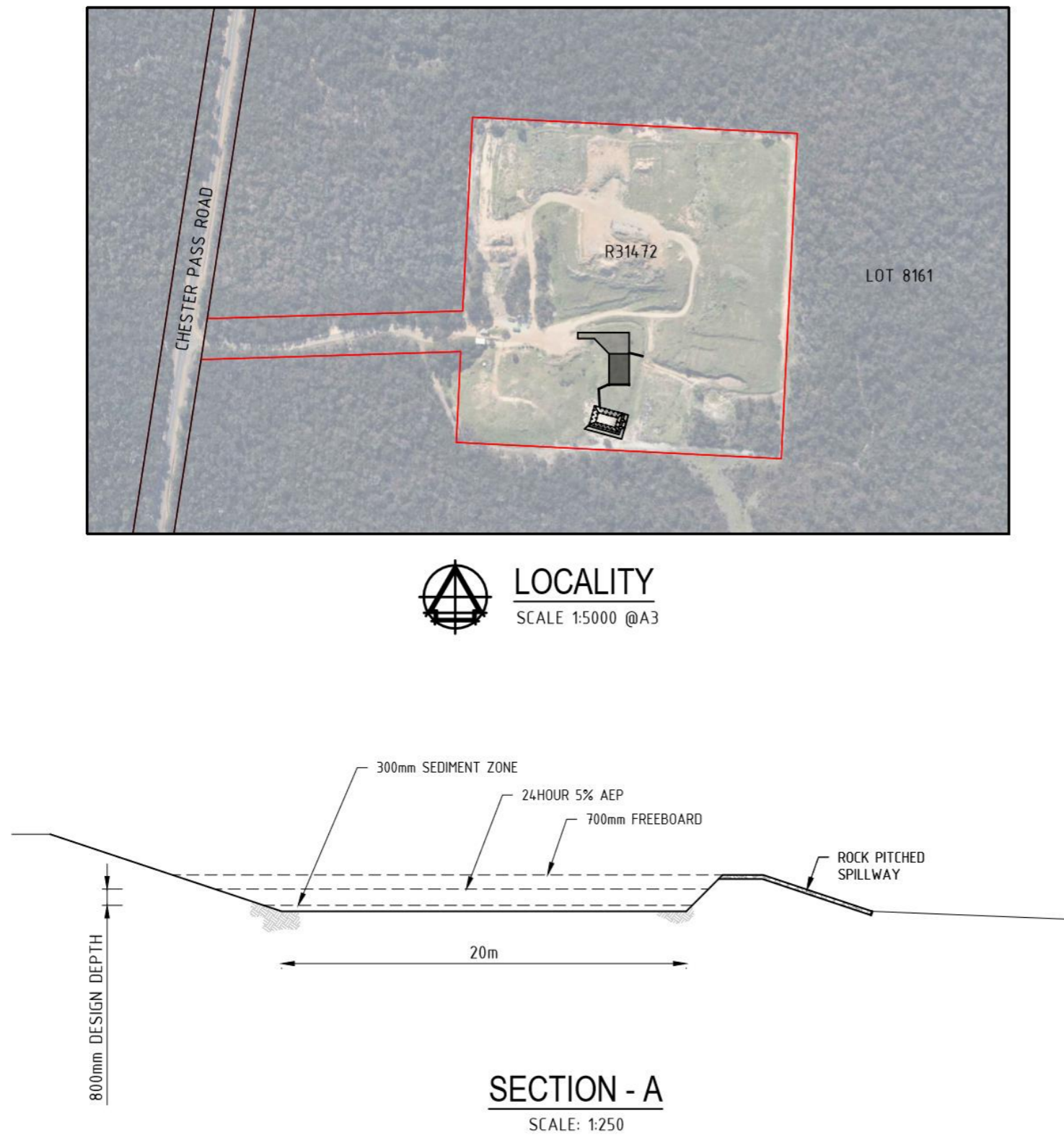


Figure 3: Site layout of the proposed stage 1 hardstand and detention basin