



<b>Licence number</b>	L8338/2009/2
<b>Licence holder</b>	Ausvision Rural Services Pty Ltd
<b>ACN</b>	106 075 763
<b>Registered business address</b>	6/78-84 Catalano Circuit CANNING VALE WA 6155
<b>DWER file number</b>	DER2018/000016
<b>Duration</b>	16/03/2014 to 15/03/2033
<b>Date of amendment</b>	24/01/2023
<b>Premises details</b>	'La Bergerie' Sheep Holding Facility Telephone Lane BALDIVIS WA 6171  Legal description – Lots 1 & 2 on Plan 77728

Prescribed premises category description (Schedule 1, Environmental Protection Regulations 1987)	Assessed throughput
Category 55: Livestock saleyard or holding pen: premises on which live animals are held, pending their sale, shipment or slaughter.	800,000 animals per year

This amendment is granted to the licence holder, subject to the attached conditions, on 24 January 2023, by:

**Daniel Hartnup**  
**A/MANAGER, PROCESS INDUSTRIES**  
**REGULATORY SERVICES**

an officer delegated under section 20 of the *Environmental Protection Act 1986* (WA)

## Licence history

Date	Instrument	Summary of changes
11/01/2005	L5302/8	Licence reissued.
12/03/2009	L8338/2009/1	Licence reissued.
13/03/2014	L8338/2009/2	Licence reissued in REFIRE format.
16/05/2019	L8338/2009/2	Licence transferred to Ausvision Rural Services Pty Ltd from Wellard Rural Exports Pty Ltd.
03/08/2021	L8338/2009/2	CEO-initiated amendment following licence compliance inspection in November 2019.
08/09/2021	L8338/2009/2	CEO-initiated amendment to extend timeframe for pond seepage test and to correct unintentional errors.
24/01/2023	L8338/2009/2	CEO-initiated amendment to correct annual reporting dates.

## Interpretation

In this licence:

- (a) the words 'including', 'includes' and 'include' in conditions mean "including but not limited to", and similar, as appropriate;
- (b) where any word or phrase is given a defined meaning, any other part of speech or other grammatical form of that word or phrase has a corresponding meaning;
- (c) where tables are used in a condition, each row in a table constitutes a separate condition;
- (d) any reference to an Australian or other standard, guideline, or code of practice in this licence:
  - (i) if dated, refers to that particular version; and
  - (ii) if not dated, refers to the latest version and therefore may be subject to change over time;
- (e) unless specified otherwise, any reference to a section of an Act refers to that section of the EP Act; and
- (f) unless specified otherwise, all definitions are in accordance with the EP Act.

**NOTE:** This licence requires specific conditions to be met but does not provide any implied authorisation for other emissions, discharges, or activities not specified in this licence.

## Licence conditions

The licence holder must ensure that the following conditions are complied with:

### Infrastructure and equipment

1. The licence holder must ensure the site infrastructure and equipment listed in Table 1 and located at the corresponding infrastructure location is maintained and operated in accordance with the corresponding operational requirement set out in that table.

**Table 1: Infrastructure and equipment requirements**

Site infrastructure and equipment	Infrastructure and operational requirements	Infrastructure location
Holding sheds/pens	<ul style="list-style-type: none"> <li>- 8 x roofed (covered) holding pens;</li> <li>- Stocking density must not exceed the following:               <ul style="list-style-type: none"> <li>- 0.33 m<sup>2</sup>/head for animals held ≤10 days on the premises; and</li> <li>- 0.5 m<sup>2</sup>/head for animals held for greater than</li> </ul> </li> </ul>	"Holding pens/sheds" in Schedule 1: Map of authorised infrastructure

Site infrastructure and equipment	Infrastructure and operational requirements	Infrastructure location
	<p>10 days on the premises;</p> <ul style="list-style-type: none"> <li>- All manure and spilt feed must be contained on hardstand floor beneath the pens (under cover);</li> <li>- Manure must be cleaned from beneath the pens at least once per week;</li> </ul>	
Effluent catch drains	<ul style="list-style-type: none"> <li>- Must comprise an impermeable barrier (concrete or similar) located at the lowest point of each holding shed;</li> <li>- Catch drains must divert wash down water, effluent and surface water runoff from each shed to the sedimentation basin;</li> <li>- Catch drains must be maintained to ensure all wash down water, effluent and surface water runoff from each shed can flow freely to the sedimentation basin;</li> </ul>	Not specified
Controlled drainage area	<ul style="list-style-type: none"> <li>- Must comprise all operational areas relating to the holding pens, including loading bays, catch drains and temporary manure storage area;</li> <li>- Area must be sloped to facilitate drainage of surface water runoff to the sedimentation basin;</li> </ul>	"Controlled drainage area" in Schedule 1: Map of authorised infrastructure
Sedimentation basins (x2)	<ul style="list-style-type: none"> <li>- Must comprise an impermeable barrier (concrete or similar) located downgradient of the controlled drainage area, with minimum holding capacity of 122 m<sup>3</sup> (Basin 1) and 60 m<sup>3</sup> (Basin 2);</li> <li>- Each basin must comprise a cylindrical concrete structure (or similar) prior to the discharge point to the evaporation pond, to prevent solids from being discharged to the evaporation pond;</li> <li>- Basins must be cleaned of soils before sludge takes up more than 10% of the design capacity of the basin;</li> <li>- An operational freeboard of at least 0.5 m must be maintained at all times;</li> </ul>	"Basin 1" and "Basin 2" in Schedule 1: Map of authorised infrastructure
Evaporation pond	<ul style="list-style-type: none"> <li>- Must comprise a containment pond located downgradient of the sedimentation basin, with a minimum holding capacity of 1,750 m<sup>3</sup> (including minimum operational freeboard of 0.5 m);</li> <li>- Pond floor and walls must comprise at least 300 mm of clay or other suitable compactable soil or a synthetic liner able to achieve a permeability of 1x10<sup>-9</sup> m/s or less;</li> <li>- An operational freeboard of at least 0.5 m must be maintained at all times;</li> </ul>	"Evaporation pond" in Schedule 1: Map of authorised infrastructure
Concrete catchment area (temporary manure storage)	<ul style="list-style-type: none"> <li>- Must comprise a hardstand area of at least 300 mm of clay or other suitable compactable soil or a synthetic liner able to achieve a permeability of 1x10<sup>-9</sup> m/s or less;</li> <li>- Area must comprise sufficient bunding to ensure leachate and contaminated surface water runoff is contained within the controlled drainage area</li> </ul>	"Concrete catchment area" in Schedule 1: Map of authorised infrastructure

### Evaporation pond liner

2. The licence holder must submit to the CEO by 1 January 2022, a report that demonstrates whether or not the evaporation pond is leaking.
3. The licence holder must ensure the report required by condition 2 includes the results of pond level testing (e.g., pond drop test) or similar.

### Premises operation

4. The licence holder must ensure that all wastewaters from operations including wash down water, by-products wastewater and contaminated runoff are directed to the sedimentation basins, prior to discharge to the evaporation pond.
5. The licence holder must ensure that where wastes produced on the premises are not taken off-site for lawful disposal, they are managed in accordance with the requirements of Table 2.

**Table 2: Management of waste**

Waste type	Disposal strategy	Operational requirement
Wastewater	Irrigation	Must comply with conditions 6, 8 & 9
Carcasses	Off-site disposal to a premises licensed for the receipt of animal carcasses	Within 24 hours of death otherwise carcasses shall be kept isolated in cold storage for a minimum of 24 hours pending off-site removal
Manure	Stockpiling on hardstand, prior to disposal off-site	Stockpiled manure must be removed from the premises at least once per week
	Off-site disposal	Offsite disposal at an authorised facility

### Emissions

#### Nutrient and irrigation management plan

6. The licence holder must submit to the CEO by 1 October 2021, a report that demonstrates how current wastewater management practices at the premises are acceptable and sustainable. As a minimum, the report must:
  - (a) be supported by an appropriate and site-specific nutrient and irrigation management plan (NIMP) that has been prepared in accordance with WQPN #33;
  - (b) demonstrate how current nutrient loadings from wastewater irrigation are appropriate for the premises;
  - (c) demonstrate how the water balance is appropriate for the premises, including how management of wastewater during the wetter months can be acceptable and sustainable; and
  - (d) demonstrate how all nutrient inputs and exports have been accounted for (nutrient balance), including the practice of holding animals in the irrigation paddocks.
7. The licence holder must ensure that waste is only emitted to land on the premises where the CEO has notified the licence holder the report required by condition 6 meets the requirements of that condition.

#### Emissions to land

8. Subject to condition 7, the licence holder must ensure that where waste is emitted to land from the emission points listed in Table 3 and identified on the map of emission points in Schedule 1, it is done so in accordance with the conditions of this licence.

**Table 3: Emissions to land**

Emission point ref	Description and location	Source, including abatement
Irrigation areas L1, L2, L3, L4, L5 & L6	Sprinkler irrigation of pasture	Wastewater from evaporation pond

9. The licence holder must ensure that:
- (a) irrigation must occur over a minimum of 4 ha in each irrigation area;
  - (b) wastewater is evenly distributed over each irrigation area;
  - (c) no soil erosion or ponding of wastewater occurs;
  - (d) there is no direct runoff, spray drift or discharge beyond the designated irrigation areas;
  - (e) healthy vegetation cover must be maintained over the irrigation area (whilst irrigating that area);
  - (f) irrigation must not occur within 50 m of a defined watercourse or drainage line; and
  - (g) irrigation must not occur during periods of rainfall, onto flooded areas or to bare ground.

### Fugitive emissions

10. The licence holder must use all reasonable and practical measures to prevent and where that is not practicable to minimise dust emissions from the premises.
11. The licence holder shall ensure that no visible dust generated by activities on the premises crosses the boundary of the premises.

### Odour

12. The licence holder must ensure that odour emitted from the premises does not unreasonably interfere with the health, welfare, convenience, comfort or amenity of any person who is not on the premises.

## Monitoring

### General monitoring

13. The licence holder must ensure that:
- (a) all water samples are collected and preserved in accordance with AS/NZS 5667.1;
  - (b) all wastewater sampling is conducted in accordance with AS/NZS 5667.10;
  - (c) all surface water sampling is conducted in accordance with AS/NZS 5667.4 or AS/NZS 5667.6, whichever is relevant;
  - (d) all groundwater sampling is conducted in accordance with AS/NZS 5667.11;
  - (e) all soil sampling is conducted in accordance with AS 4482.1 and AS 4482.2 as relevant; and
  - (f) all laboratory samples are submitted to and tested by a laboratory with current NATA accreditation for the parameters being tested.
14. The licence holder must ensure that:
- (a) monthly monitoring is undertaken at least 15 days apart;
  - (b) quarterly monitoring is undertaken at least 45 days apart;
  - (c) six-monthly monitoring is undertaken at least 5 months apart; and
  - (d) annual monitoring is undertaken at least 9 months apart.

### Monitoring of emissions to land

15. The licence holder must undertake the monitoring in Table 4 according to the specifications in that table.

**Table 4: Monitoring of emissions to land**

Emission point ref	Monitoring point ref	Parameter	Units	Averaging period	Frequency
Irrigation areas 1, 2, 3, 4, 5 & 6 in Schedule 1: Map of emission points and monitoring locations	Evaporation pond (water sample)	pH	No unit	Spot sample	Quarterly
		Total nitrogen	mg/L		
		Nitrate-nitrogen			
		Ammonia-nitrogen			
		Total phosphorus			
		Total dissolved solids			

### Monitoring of inputs and outputs

16. The licence holder must undertake the monitoring in Table 5 according to the specifications in that table.

**Table 5: Monitoring of inputs and outputs**

Input / Output	Parameter	Units	Averaging period	Frequency
Livestock received	Animals	Number of alive animals	Monthly	Each batch arriving at premises
Livestock leaving premises				Each batch leaving premises

### Ambient environmental quality monitoring

17. The licence holder must undertake the monitoring in Tables 6, 7 & 8 according to the specifications in those tables.

**Table 6: Monitoring of ambient surface water quality**

Monitoring point ref	Parameter	Units	Averaging period	Frequency
Drainage channels at D1, D2, D3 & D4 in Schedule 1: Map of emission points and monitoring locations	pH	No unit	Spot sample	Six-monthly
	Total nitrogen	mg/L		
	Nitrate-nitrogen			
	Ammonia-nitrogen			
	Total phosphorus			
	Total dissolved solids			

**Table 7: Monitoring of ambient soil quality**

Monitoring point ref	Parameter	Units	Averaging period	Frequency
Soil samples S1 & S2 in Schedule 1: Map of emission points and monitoring locations	pH	No unit	Spot samples at the depths of 25 cm, 50 cm, 75 cm and 100 cm below ground level	Annually
	Total nitrogen, ammonia-nitrogen, nitrate-nitrogen	mg/kg		
	Total phosphorus			
	Phosphorus retention index (PRI)	No unit		
	Permeability	m/sec		

**Table 8: Monitoring of ambient groundwater quality**

Monitoring point ref	Parameter	Units	Averaging period	Frequency
Groundwater monitoring bores B1, B2, B3 & B4 in Schedule 1: Map of emission points and monitoring locations	Standing water level	m AHD	Spot sample	Monthly <sup>1</sup>
	pH	No unit		Quarterly
	Total nitrogen	mg/L		
	Nitrate-nitrogen			
	Ammonia-nitrogen			
	Total phosphorus			
	Total dissolved solids			

Note 1: Monthly monitoring during the period August 2021 – July 2022 inclusive, quarterly thereafter.

## Records and reporting

- 18.** All information and records required by the licence must:
- be legible;
  - if amended, be amended in such a way that the original and subsequent amendments remain legible and are capable of retrieval;
  - except for records listed in condition 18(d), be retained for at least 6 years from the date the records were made or until the expiry of the licence or any subsequent licence; and
  - for those following records, be retained until the expiry of the licence and any subsequent licence:
    - off-site environmental effects; or
    - matters which affect the condition of the land or waters.
- 19.** The licence holder must:
- undertake an audit of their compliance with the conditions of this licence during the preceding annual period; and
  - prepare and submit to the CEO, by no later than 30 May in each year, an Annual Audit Compliance Report in the approved form.
- 20.** The licence holder must implement a complaints management system that as a minimum records the number and details of complaints received concerning the environmental impact of the activities undertaken at the premises and any action taken in response to the complaint.
- 21.** The licence holder must maintain accurate and auditable books including the following records, information, reports and data required by this licence:
- the calculation of fees payable in respect of this licence;
  - the maintenance of infrastructure required to ensure that it is kept in good working order in accordance with condition 1;
  - monitoring undertaken in accordance with conditions 15 & 16; and
  - complaints received under condition 20.
- 22.** The licence holder must submit to the CEO, by 30 May in each year, an annual environmental report containing the information listed in Table 9.

**Table 9: Annual environmental report**

Condition or table	Parameter
-	Summary of any failure or malfunction of any pollution control equipment and any environmental incidents that have occurred during the annual period and any

Condition or table	Parameter
	action taken
Table 4	Monitoring of emissions to land
Table 5	Monitoring of inputs and outputs
Table 6	Monitoring of ambient surface water quality
Table 7	Monitoring of ambient soil quality
Table 8	Monitoring of ambient groundwater quality
Condition 19	Compliance (AACR)
Condition 20	Complaints summary



## Definitions

In this licence, the terms in Table 10 have the meanings defined.

**Table 10: Definitions**

Term	Definition
AHD	Australian Height Datum
Annual Audit Compliance Report (AACR)	means a report submitted in a format approved by the CEO (relevant guidelines and templates may be available on the Department's website)
annual period	means the inclusive period from 1 April until 31 March in the following year
AS/NZS 4482.1	means the Australian Standard AS/NZS 4482.1 <i>Australian Standard Guide to the sampling and investigation of potentially contaminated soil – Part 1: Non-volatile and semi-volatile compounds</i>
AS/NZS 4482.2	means the Australian Standard AS/NZS 4482.2 <i>Australian Standard Guide to the sampling and investigation of potentially contaminated soil – Part 2: Volatile substances</i>
AS/NZS 5667.1	means the Australian Standard AS/NZS 5667.1 <i>Water Quality – Sampling – Guidance on the design of sampling programs, sampling techniques and the preservation and handling of samples</i>
AS/NZS 5667.4	means the Australian Standard AS/NZS 5667.4 <i>Water Quality – Sampling – Guidance on sampling from lakes, natural and man-made</i>
AS/NZS 5667.6	means the Australian Standard AS/NZS 5667.6 <i>Water Quality – Sampling – Guidance on sampling of rivers and streams</i>
AS/NZS 5667.10	means the Australian Standard AS/NZS 5667.10 <i>Water Quality – Sampling – Guidance on sampling of waste waters</i>
AS/NZS 5667.11	means the Australian Standard AS/NZS 5667.11 <i>Water Quality – Sampling – Guidance on sampling of groundwaters</i>
averaging period	means the time over which a limit is measured or a monitoring result is obtained
books	has the same meaning given to that term under the EP Act
CEO	means Chief Executive Officer of the Department of Water and Environmental Regulation. “submit to / notify the CEO” (or similar) means either: Director General Department Administering the <i>Environmental Protection Act 1986</i> Locked Bag 10 JOONDALUP DC WA 6919 <a href="mailto:info@dwer.wa.gov.au">info@dwer.wa.gov.au</a>
condition	means a condition to which this licence is subject under s.62 of the EP Act
Department	means the department established under section 35 of the <i>Public Sector Management Act 1994</i> and designated as responsible for the administration of the EP Act, which includes Part V, Division 3
discharge	has the same meaning given to that term under the EP Act
emission	has the same meaning given to that term under the EP Act
environmentally hazardous materials	means material (either solid or liquid raw materials, materials in the process of manufacture, manufactured products, products used in the manufacturing process, by-products and waste), which if discharged into the environment from or within the premises may cause pollution or environmental harm
EP Act	means the <i>Environmental Protection Act 1986</i> (WA)

freeboard	means the distance between the maximum water surface elevations and the top of retaining banks or structures at their lowest point
hardstand	means a surface with a permeability of $10^{-9}$ metres/second or less
licence	means this document, which evidences the grant of a licence by the CEO under section 57 of the EP Act, subject to the specified conditions contained within
licence holder	refers to the occupier of the premises being the person to whom this licence has been granted, as specified at the front of this licence
NATA	National Association of Testing Authorities, Australia
NATA accredited	means in relation to the analysis of a sample that the laboratory is NATA accredited for the specified analysis at the time of the analysis
pond drop test	means in relation to pond level testing, the Pond Drop Test (PDT) methodology as outlined in the Institution of Professional Engineers New Zealand (IPENZ) document entitled <i>Practice Note 21: Farm Dairy Effluent Ponds (Ver 3, August 2017)</i> ISSN 1176-0907
premises	means the premises to which this licence applies, as specified at the front of this licence and as shown on the map in Schedule 1 to this licence
prescribed premises	has the same meaning given to that term under the EP Act
quarterly	means the 4 inclusive periods from 1 April to 30 June, 1 July to 30 September and 1 October to 31 December, and January to 31 March in the following year
Schedule 1	means Schedule 1 of this licence, unless otherwise stated
Schedule 2	means Schedule 2 of this licence, unless otherwise stated
spot sample	means a discrete sample representative of the time and place at which the sample is taken
wastewater treatment system	means a wastewater and effluent management system consisting of catch drains, containment pond and holding pond
WQPN #33	means the document <i>Water Quality Protection Note #30: Groundwater monitoring bores</i> , Department of Water (February 2006). Available at: <a href="http://www.water.wa.gov.au/data/assets/pdf_file/0010/4033/59685.pdf">www.water.wa.gov.au/data/assets/pdf_file/0010/4033/59685.pdf</a>

---

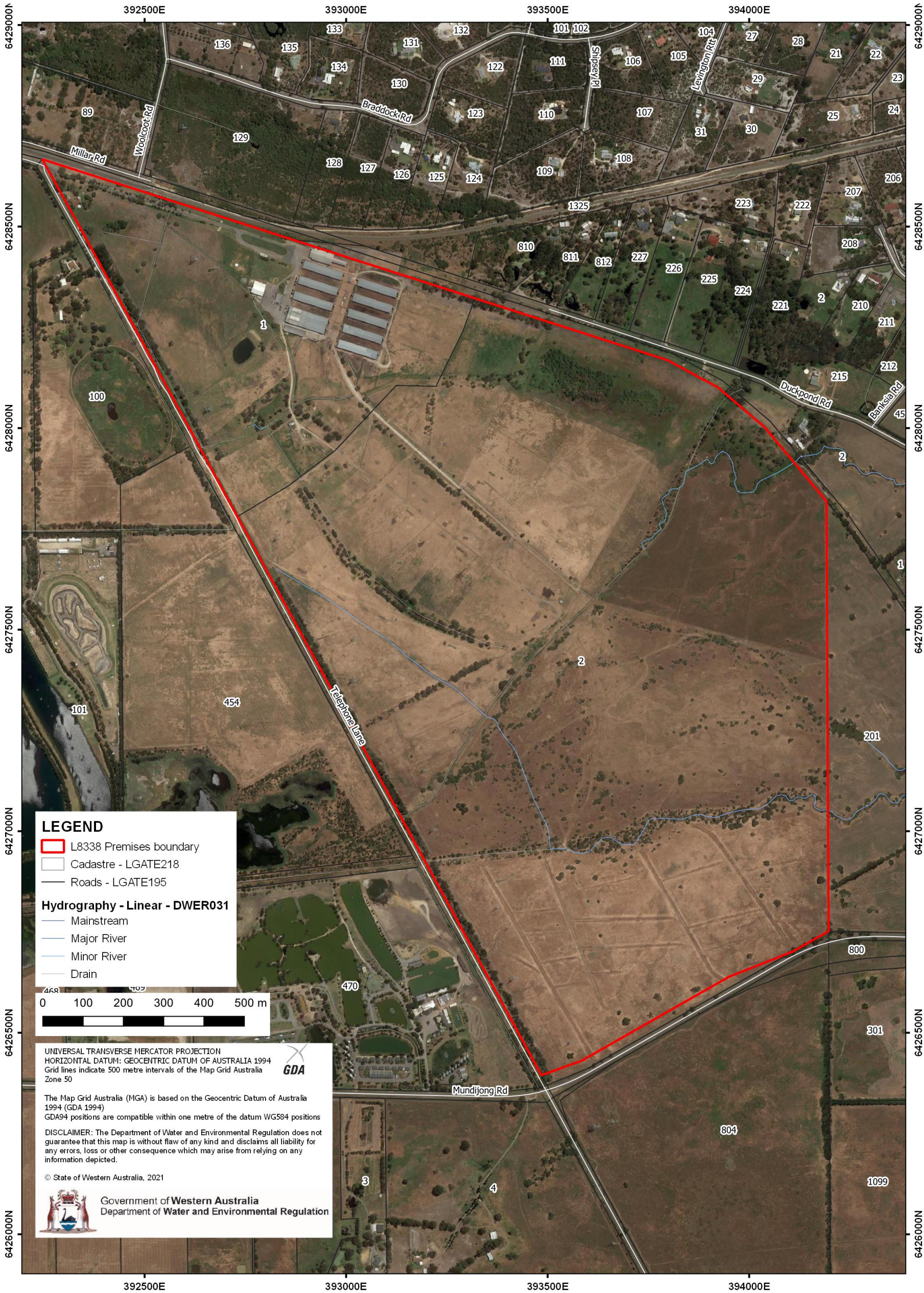
## END OF CONDITIONS



Schedule 1: Maps

Premises map and key infrastructure layout

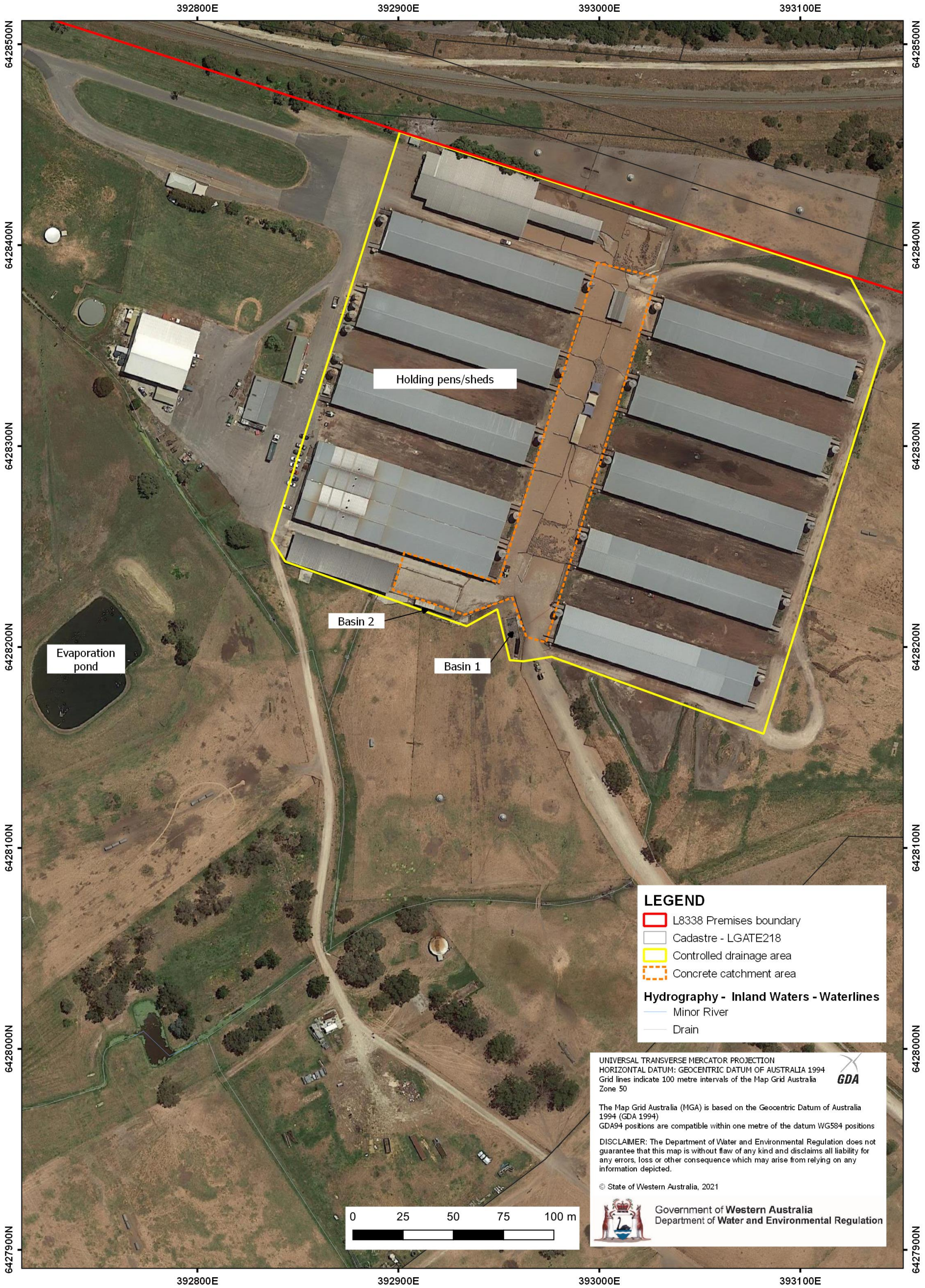
The boundary of the prescribed premises is shown in the map below. The red line depicts the premises boundary.





Map of authorised infrastructure

The location of the infrastructure authorised for containment and management of wastes on this licence are shown below.





Map of emission points and monitoring locations

The location of the infrastructure authorised for containment and management of wastes on this licence are shown below.

