



Licence number	L8613/2011/3
Licence holder	Ausvision Rural Services Pty Ltd
ACN	106 075 763
Registered business address	6/78-84 Catalano Circuit CANNING VALE WA 6151
DWER file number	FA265424
Duration	12/10/2022 to 11/10/2042
Date of amendment	26/004/2023
Premises details	Hillside Meat Processors 148 Boxsell Road NARROGIN WA 6312 Legal description: Lot 50 on Plan 80743 and Lot 6 on Plan 233183 as depicted in Schedule 1

Prescribed premises category description (Schedule 1, <i>Environmental Protection Regulations 1987</i>)	Assessed production capacity
Category 15: Abattoir: premises on which animals are slaughtered	Not more than 16,200 liveweight tonnes per annual period (sheep and goats)
Category 83: Fellmongering: premises on which animal skins or hides are dried, cured or stored	Not more than 345, 800 skins

This licence is granted to the licence holder, subject to the attached conditions, on 26 April 2023, by:

MANAGER, PROCESS INDUSTRIES

an officer delegated under section 20 of the *Environmental Protection Act 1986* (WA)

Licence history

Date	Reference number	Summary of changes
24/11/2011	L8613/2011/1	New Licence issued to Elderstone Nominees Pty Ltd for category 15: Abattoir, category 16: Rendering operations and category 55: Livestock saleyard or holding pen consisting of concrete floored roofed pens within the controlled drainage area
23/08/2012	L8613/2011/1	Licence transferred to Ausvision Rural Services Pty Ltd
10/10/2013	L8613/2011/2	Licence reissue
07/01/2016	L8613/2011/2	Licence amendment to remove Category 16: rendering and all conditions relating to rendering as rendering is no longer conducted on-site)
23/09/2022	L8613/2011/3	Licence renewal application. Includes an update of the format of the licence, removal of category 55: Livestock Saleyard or holding pen and redundant conditions, and addition of conditions to reflect current emission control infrastructure.
26/04/2023	L8613/2011/3	Licence amendment application to include Category 83: fellmongering infrastructure and activities and authorise the use of outdoor lairage yards not previously considered by the Licence.

Interpretation

In this licence:

- (a) the words 'including', 'includes' and 'include' in conditions mean "including but not limited to", and similar, as appropriate;
- (b) where any word or phrase is given a defined meaning, any other part of speech or other grammatical form of that word or phrase has a corresponding meaning;
- (c) where tables are used in a condition, each row in a table constitutes a separate condition;
- (d) any reference to an Australian or other standard, guideline, or code of practice in this licence:
 - (i) if dated, refers to that particular version; and
 - (ii) if not dated, refers to the latest version and therefore may be subject to change over time;
- (e) unless specified otherwise, any reference to a section of an Act refers to that section of the EP Act; and
- (f) unless specified otherwise, all definitions are in accordance with the EP Act.

NOTE: This licence requires specific conditions to be met but does not provide any implied authorisation for other emissions, discharges, or activities not specified in this licence.

Licence conditions

The licence holder must ensure that the following conditions are complied with:

Infrastructure and equipment

- The licence holder must ensure that the site infrastructure and equipment listed in Table 1 and located at the corresponding infrastructure location is maintained and operated in accordance with the corresponding operational requirement set out in Table 1.

Table 1: Infrastructure and equipment requirements

Item	Site infrastructure and equipment	Operational requirement	Infrastructure location as labelled in Schedule 1
Wastewater collection and treatment			
1	Wastewater Treatment System comprising of the following clay lined ponds: <ul style="list-style-type: none"> Anaerobic Ponds 1 and 2 (1200m³ and 1000m³ capacity) Aerobic Ponds 3, and 4 (1450m³ and 5800m³ capacity) Evaporation Ponds 5, and 6 (1850m³ and 3200m³) 	<ul style="list-style-type: none"> a) All uncontaminated stormwater is diverted away from the ponds to minimise the risk of erosion or pond embankments or flooding; b) Maintain the integrity of the containment infrastructure; c) Maintain trapped overflow ("t-piece") on the discharge from the anaerobic pond to prevent carry over of surface floating matter; d) Maintain a minimum top of embankment freeboard of 400 mm; e) Prevent vegetation from growing on inner pond embankments; f) Maintain a crust/cover on the anaerobic pond at all times; and g) Maintain a stock-proof fence around all wastewater treatment ponds. 	Shown as 'Pond 1, Pond 2, Pond 3, Pond 4, Pond 5, Pond 6' in Figure 2
2	Truck washdown station with concrete hardstand and bund with a water collection sump and sediment trap	<ul style="list-style-type: none"> a) Only refrigeration trucks to be washed within the truck washdown station; and b) All wastewater generated by the truck wash to be directed through the sump and sediment trap into Pond 1. 	Shown as 'Truck Washdown' in Figure 2
3	Wastewater drainage infrastructure	<ul style="list-style-type: none"> a) All wastewater conveying sumps, drains, and pipes must be maintained free of leaks; and 	Not shown

Item	Site infrastructure and equipment	Operational requirement	Infrastructure location as labelled in Schedule 1
		b) Solid screens, traps, and sumps to be cleaned daily with solid wastes to be directed to the MPSA.	
Abattoir			
4	Slaughterhouse	a) By product (offal, bones, blood, skins) must be directed to trucks for offsite disposal or render; b) Blood must be directed to the blood collection tank prior to offsite disposal; and c) No blood to be discharged into the wastewater treatment system.	Shown as 'Abattoir' in Figure 2
5	5000L blood collection tank	a) Blood collection tank must be emptied daily for offsite disposal or render.	Shown as 'Blood collection tank' in Figure 2
6	Animal byproducts loading area comprising: <ul style="list-style-type: none"> • Hardstand • Solid waste conveyor • Drainage 	a) All liquid wastes generated within the animal by products loading area must be discharged into the wastewater treatment system.	Not shown
Fellmongering			
7	Skin shed comprising a concrete floor graded towards an inlet that discharges to an impervious concrete collection sump	a) Skins must be pressed, packed and stored in pallets within the skin shed pending weekly removal offsite; and b) Liquid waste must be directed to the concrete collection sump.	Shown as 'Skin Shed' in Figure 2
8	Secondary sump fitted with a discharge pump	a) Overflow from the concrete collection sump must be discharged to the secondary sump; and b) Liquid waste from the secondary sump must be pumped into impervious containment vessels, which when full, must be disposed of offsite by a licenced controlled waste carrier.	Not shown
9	Salt waste skip bin	a) Solid waste salt must be disposed of in the designated skip bin, which when full must be removed offsite for disposal at a facility licensed to accept this type of waste.	Not shown

Item	Site infrastructure and equipment	Operational requirement	Infrastructure location as labelled in Schedule 1
Lairage			
10	Covered lairage shed and drainage infrastructure comprising mesh floor and graded hardstand directed to concrete drain	<ul style="list-style-type: none"> a) Stock (sheep) awaiting slaughter must only be held in in the covered lairage or uncovered lairage yards 1 to 6; b) Not more than 1800 animals must be kept on the premises at any one time and c) All wastewater must be directed through the solids separator before being discharged into the wastewater treatment system. 	<p>Shown as 'Lairage' in Figure 2</p> <p>Shown in Figure 3 as uncovered lairage 1 – 14</p>
11	Uncovered lairage yards 1 to 7 consisting of an in-situ earth floor draining to a floor solids screen before discharging into a wastewater pipe.	<ul style="list-style-type: none"> a) Solid waste (manure) must be collected from the yards once a month between November and April and taken to the paunch and manure storage area; b) Solid waste (manure) must be collected from the yards once a week between May and September and taken to the paunch and manure storage area; c) Cut-off drains must be maintained to divert stormwater away from the lairage yards; d) All wastewater and contaminated stormwater generated within the lairage yards must be directed through a solids screen drain before being discharged via pipe to the solids separator prior to discharge to Pond 6; e) To prevent clogging of the solids screen, the screen must be cleaned at least weekly during the dry summer months and every wet day during the wet winter months and storm events; and f) Uncovered 'lairage' yards shown as lairage 8 to 14 in figure 3 must not be used for the holding of stock until a works approval or licence authorizing their use is granted. 	<p>'Solids separator' in Figure 2</p>
Solid waste management			

Item	Site infrastructure and equipment	Operational requirement	Infrastructure location as labelled in Schedule 1
13	Paunch material storage area (MPSA) consisting of a graded and bunded concrete hardstand area and contains the Contra Shear solids separator capable of processing up to 8,000L/min	<ul style="list-style-type: none"> a) Waste stored within the MPSA must be removed for offsite disposal at least once every month; b) No more than 15m³ is to be stored within the MPSA at any given time; c) Leachate generated from the MPSA must be directed to Pond 5 via underground pipe; d) Wastewater directed through the solids separator must be pumped into Pond 1; and e) Bunded hardstand must be maintained to prevent stormwater flows from accessing the MPSA. 	<p>Shown as 'Manure and paunch material storage area' and</p> <p>'Solids separator' in Figure 2</p>
14	Clay lined burial pits	<ul style="list-style-type: none"> a) Burial of solid waste (paunch and carcasses not suitable for rendering) only; b) Carcasses and waste material must be covered with lime upon deposit; c) Waste material must be covered with a minimum of 500 mm of soil at least a monthly basis; and d) Pits shall not be excavated to deeper than 1.5m below ground level. 	Shown as 'Burial pit' in Figure 1
Onsite wastewater disposal			
15	<p>37 hectares of irrigation area being L1 (24 ha) and L2 (13 ha)</p> <p>Irrigation equipment being irrigation pump, 1x vehicle with 20m spray radius travelling irrigator, L1 mainline (200mm poly pipe), L2 mainline (100mm poly pipe) and supply hose</p>	<ul style="list-style-type: none"> a) No solid wastes including paunch or manure is permitted to be applied to or buried within the irrigation areas; b) Stock may not be held or grazed within the irrigation areas; c) Soil erosion as a result of the irrigation of wastewater must not occur; d) Wastewater may only be applied to irrigation areas with a health vegetation cover to ensure the uptake of water and nutrient; and e) A hay crop to be harvested from the irrigation areas on an annual basis. 	<p>Shown as 'Irrigation areas L1 and L2' and</p> <p>'Pump and flow meter, mainline L1 and L2, supply hose and travelling gun' and Shown in Figure 1</p>

Waste management

2. The licence holder must ensure that the waste types specified in Table 2 are only subjected to the corresponding process(es), subject to the corresponding process specifications and reported to DWER as per that table.

Table 2: Process reporting

Waste Type	Process(es)	Process specifications	Reporting Requirement
Blood	Emptying of blood collection tank	The blood tank must be emptied daily by a licenced contractor and taken offsite for disposal or rendering	Amount of blood (L) removed from site daily
Carcasses	Disposal of animal carcasses offsite	Within 24 hours of death, animal carcasses must be buried or removed offsite by a licenced contractor for disposal or rendering	Number of carcasses removed each month
	Burial of animal carcasses onsite		Weight (tonnes) of carcasses buried onsite each month
Abattoir solid waste byproducts (offal, bone)	Disposal of abattoir byproducts offsite	All renderable material generated from abattoir operations must be collected daily by a licenced contractor for processing or disposal offsite	Weight (tonnes) of waste per year disposed offsite
Fellmongering solid wastes (salt)	Disposal of salt offsite	Waste salt must be stored in salt skip bin which when full, must be disposed of offsite	
Fellmongering liquid wastes (brine)	Disposal of brine offsite	Brine must be stored in impervious containment vessels, which when full, must be disposed of offsite by a licenced controlled waste carrier	Volumes or tonnes of brine removed from site each month
Solid wastes (manure and paunch material)	Removal of solid wastes stored from the Manure and Paunch Material Storage Area	Waste stored within the MPSA must be collected at least once per month.	Volume (m ³) of material removed each month from the manure and paunch material storage area
Treated wastewater	Irrigation of wastewater to land	In accordance with condition 1, Table 1, Item 12	Volume (kL) of treated wastewater irrigated to L1 and L2 per month

3. The licence holder shall ensure that all wastewaters from abattoir operations

including wash-down water, by-products wastewater, lairage, holding pens, and contaminated run-off are directed to the wastewater treatment system.

Emissions and discharges

Emissions to land

4. The licence holder must ensure that the emissions specified in Table 3 are discharged only from the corresponding discharge point and only at the corresponding discharge point location.

Table 3: Emissions to land

Emission	Emission point reference	Discharge point location
Treated wastewater to land	L1 (24Ha)	Travelling irrigator moved across irrigation area L1 and L2 (see Schedule 1, Figure 2)
	L2 (13Ha)	

5. The licence holder must not cause or allow emissions to land greater than the limits listed in Table 4.

Table 4: Emission limits to land

Emission point reference	Parameter	Limit
L1	Total Phosphorous	50 kg/ha/annual period
	Total Nitrogen	300 kg/ha/annual period
	Biochemical Oxygen Demand ₅	30 kg/ha/ day
L2	Total Phosphorous	50 kg/ha/annual period
	Total Nitrogen	300 kg/ha/annual period
	Biochemical Oxygen Demand ₅	30 kg/ha/ day

Monitoring

General monitoring

6. The licence holder must ensure that:
 - (a) all water samples are collected and preserved in accordance with AS/NZS 5667.1;
 - (b) all wastewater sampling is conducted in accordance with AS/NZS 5667.10; and
 - (c) all laboratory samples are submitted to and tested by a laboratory with current NATA accreditation for the parameters being measured.
7. The licence holder must ensure that:
 - (a) monthly monitoring is undertaken at least 15 days apart; and
 - (b) quarterly monitoring is undertaken at least 45 days apart.

Monitoring of emissions to land

8. The licence holder must undertake the monitoring in Table 5 according to the specifications in that table.

Table 5: Monitoring of emissions to land

Emission point ref	Monitoring point ref	Parameter	Units	Averaging period	Frequency
L1, L2	M1 (Final wastewater treatment pond (pond 6) outlet)	Volume of treated wastewater discharged to L1 and L2	kL	Monthly	Continuous when irrigating
		pH	-	Spot sample	Quarterly
		Total Suspended Solids (TSS)	mg/L		
		5-Day Biochemical Oxygen Demand (BOD5)			
		Total nitrogen			
		Total phosphorus			
		Total dissolved solids (TDS)			
		<i>E. coli</i>	CFU/100ml		

Monitoring of inputs and outputs

9. The licence holder must undertake the monitoring in Table 6 according to the specifications in that table.

Table 6: Process Monitoring

Input / Output	Parameter	Units	Averaging period	Frequency
Livestock received at premises for slaughter	Animals	Number and tonnes estimated	Monthly	Each batch arriving at premises
Slaughtered animals	Hot standard carcase weight	kilograms		Total of all animals slaughtered on the premises
Animal skins processed	Skins	Number and tonnes		Number per monthly period
Hay harvested from the irrigation areas	Hay	tonnes	annually	Tonnes per annual period

Records and reporting

10. The licence holder must record the following information in relation to complaints received by the licence holder (whether received directly from a complainant or forwarded to them by the Department or another party) about any alleged emissions from the premises:
- the name and contact details of the complainant, (if provided);
 - the time and date of the complaint;
 - the complete details of the complaint and any other concerns or other issues raised; and

- (d) the complete details and dates of any action taken by the licence holder to investigate or respond to any complaint.
- 11.** The licence holder must:
- undertake an audit of their compliance with the conditions of this licence during the preceding annual period; and
 - prepare and submit to the CEO, by no later than 28 January in each year, an Annual Audit Compliance Report in the approved form.
- 12.** The licence holder must maintain accurate and auditable books including the following records, information, reports, and data required by this licence:
- the calculation of fees payable in respect of this licence;
 - any maintenance of infrastructure that is performed in the course of complying with condition 1 of this licence;
 - monitoring programmes undertaken in accordance with conditions 8 and 9 of this licence; and
 - complaints received under condition 10 of this licence.
- 13.** The books specified under condition 12 must:
- be legible;
 - if amended, be amended in such a way that the original version(s) and any subsequent amendments remain legible and are capable of retrieval;
 - be retained by the licence holder for the duration of the licence; and
 - be available to be produced to an inspector or the CEO as required.
- 14.** The licence holder must submit to the CEO by no later than 28 January 2024 and annually thereafter, an environmental report containing the information listed in Table 7 for the preceding annual period.

Table 7: Annual environmental report requirements

Condition or table	Requirement
-	Summary of any failure or malfunction of any pollution control equipment and any environmental incidents that have occurred during the annual period and any action taken
Condition 1 - Table 1 item 2	Number of trucks washed per week within the truck washdown bay shown in tabular format
Condition 2 - Table 2	Summary of reporting requirements as indicated in Table 2
Condition 8 - Table 4	<p>Monitoring of emissions to land, including:</p> <ul style="list-style-type: none"> Treated wastewater monitoring data in tabulated and graphical form including the sampling date; Tabulated monthly and annual loadings of nitrogen, phosphorus and BOD applied to each irrigation area, including an explanation of the basis for determining loading rates; and Volume (in m³ or kL) of treated wastewater applied monthly to each irrigation area, presented in table format; <p>Review, assessment, and interpretation of the data including comparison to historical trends and licence nutrient loading limits.</p>
Condition 9 - Table 6	Monitoring of inputs and outputs
Condition 10	Summary of progress

Condition or table	Requirement
Condition 11	Complaints summary
Condition 12	Compliance summary

Definitions

In this licence, the terms in Table 8 have the meanings defined.

Table 8: Definitions

Term	Definition
ACN	Australian Company Number
Annual Audit Compliance Report (AACR)	means a report submitted in a format approved by the CEO (relevant guidelines and templates may be available on the Department's website).
annual period	a 12-month period commencing from 1 January until 31 December of the same year.
AS/NZS 5667.1	means the Australian Standard AS/NZS 5667.1 <i>Water Quality – Sampling – Guidance on the design of sampling programs, sampling techniques and the preservation and handling of samples</i>
AS/NZS 5667.10	means the Australian Standard AS/NZS 5667.10 <i>Water Quality – Sampling – Guidance on sampling of waste waters</i>
averaging period	means the time over which a limit is measured or a monitoring result is obtained
books	has the same meaning given to that term under the EP Act.
CEO	means Chief Executive Officer of the Department. “submit to / notify the CEO” (or similar), means either: Director General Department administering the <i>Environmental Protection Act 1986</i> Locked Bag 10 Joondalup DC WA 6919 or: info@dwer.wa.gov.au
Controlled waste	has the same definition in <i>Environmental Protection</i>
Department	means the department established under section 35 of the <i>Public Sector Management Act 1994</i> (WA) and designated as responsible for the administration of the EP Act, which includes Part V Division 3.
discharge	has the same meaning given to that term under the EP Act.
emission	has the same meaning given to that term under the EP Act.

Term	Definition
EP Act	<i>Environmental Protection Act 1986 (WA)</i>
EP Regulations	<i>Environmental Protection Regulations 1987 (WA)</i>
freeboard	means the distance between the maximum water surface elevations and the top of retaining banks or structures at their lowest point
hardstand	Means a surface with a permeability of 10^{-9} metres/second or less
irrigation areas	The areas designated for disposal of treated wastewater and as depicted in Schedule 1
leachate	Means a liquid containing contaminants leached from the waste mass produced as water percolates
licence	refers to this document, which evidences the grant of a licence by the CEO under section 57 of the EP Act, subject to the specified conditions contained within.
licence holder	refers to the occupier of the premises, being the person specified on the front of the licence as the person to whom this licence has been granted.
Monthly	means a one-month period commencing from the first day of a month until the last day of the month.
NATA	National Association of Testing Authorities, Australia
NATA accredited	means in relation to the analysis of a sample that the laboratory is NATA accredited for the specified analysis at the time of the analysis
nutrient loading rate	means the quantity of a particular parameter applied over the total irrigation area for a specified period of time, expressed as kilograms per hectare per year.
premises	refers to the premises to which this licence applies, as specified at the front of this licence and as shown on the premises maps (Figure 1) in Schedule 1 to this licence.
prescribed premises	has the same meaning given to that term under the EP Act.
solid waste	means solid or spadable manures, sludge and paunch material collected from the holding pens and abattoir operations.
spot sample	means a discrete sample representative of the time and place at which the sample is taken
wastewater treatment system	means the pond-based system for treating and storing wastewater including interconnecting pipes directing wastewater to the primary anaerobic ponds, connecting to the aerobic treatment ponds and evaporation ponds as depicted in Figure 2 Schedule 1
waste	has the same meaning given to that term under the EP Act.

END OF CONDITIONS

Schedule 1: Maps

Premises map

The boundary of the prescribed premises is shown in pink in the map below (Figure 1).

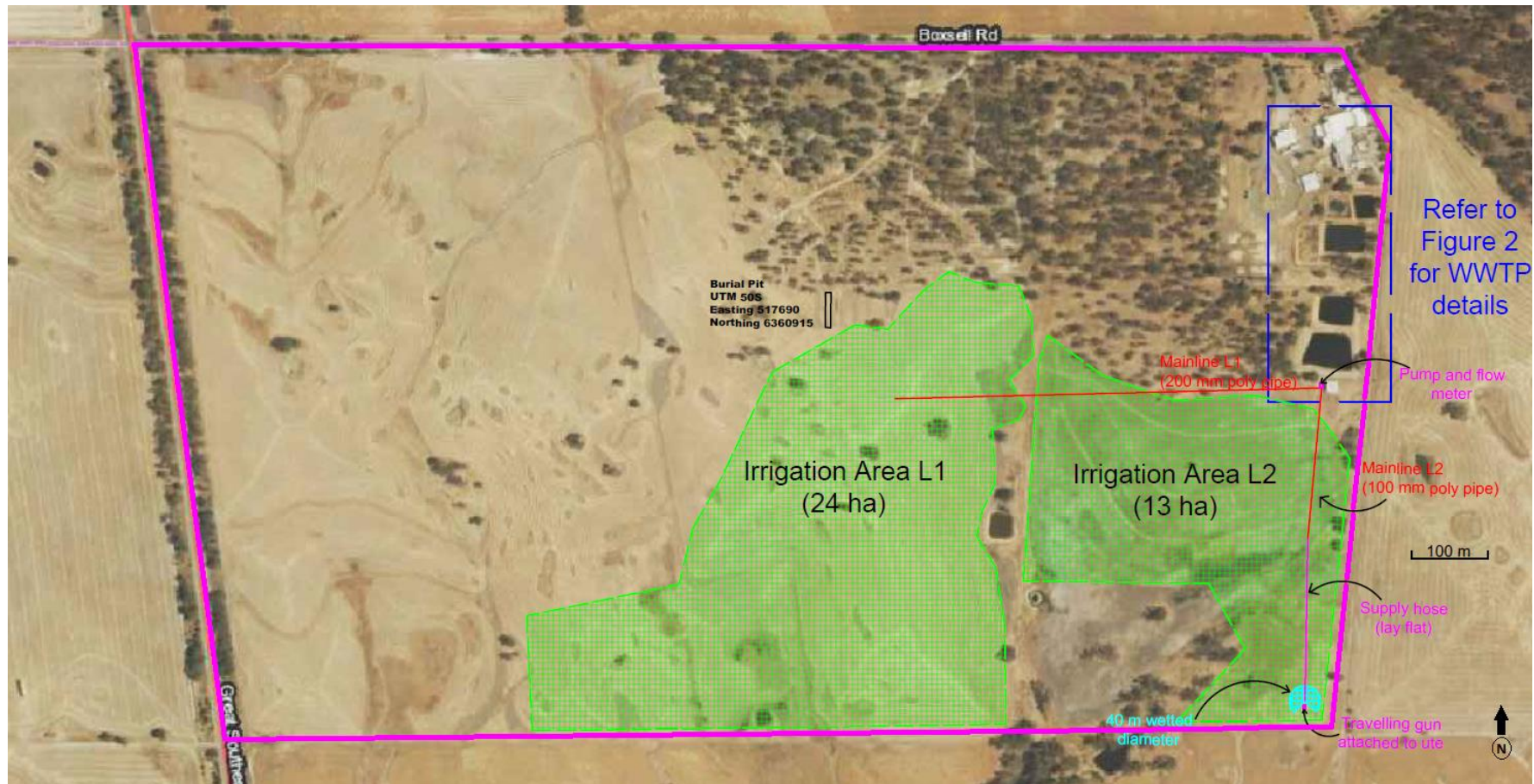


Figure 1: Map of the boundary of the prescribed premises

Key premises infrastructure

The location of the key infrastructure associated with abattoir operations is shown below.

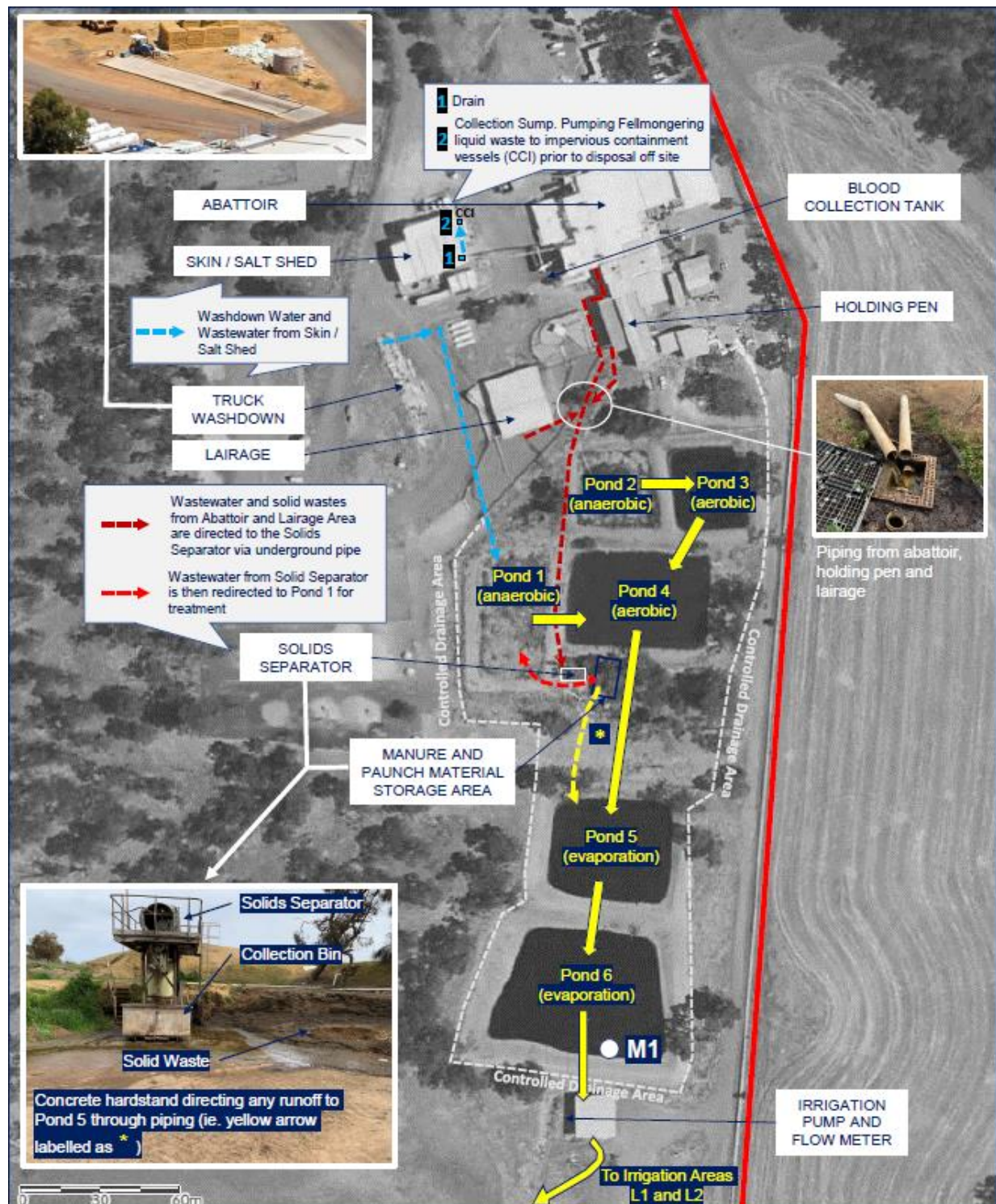


Figure 2: Key premises infrastructure

The outdoor lairage yards are numbered and outlined in red below (applicant provided).

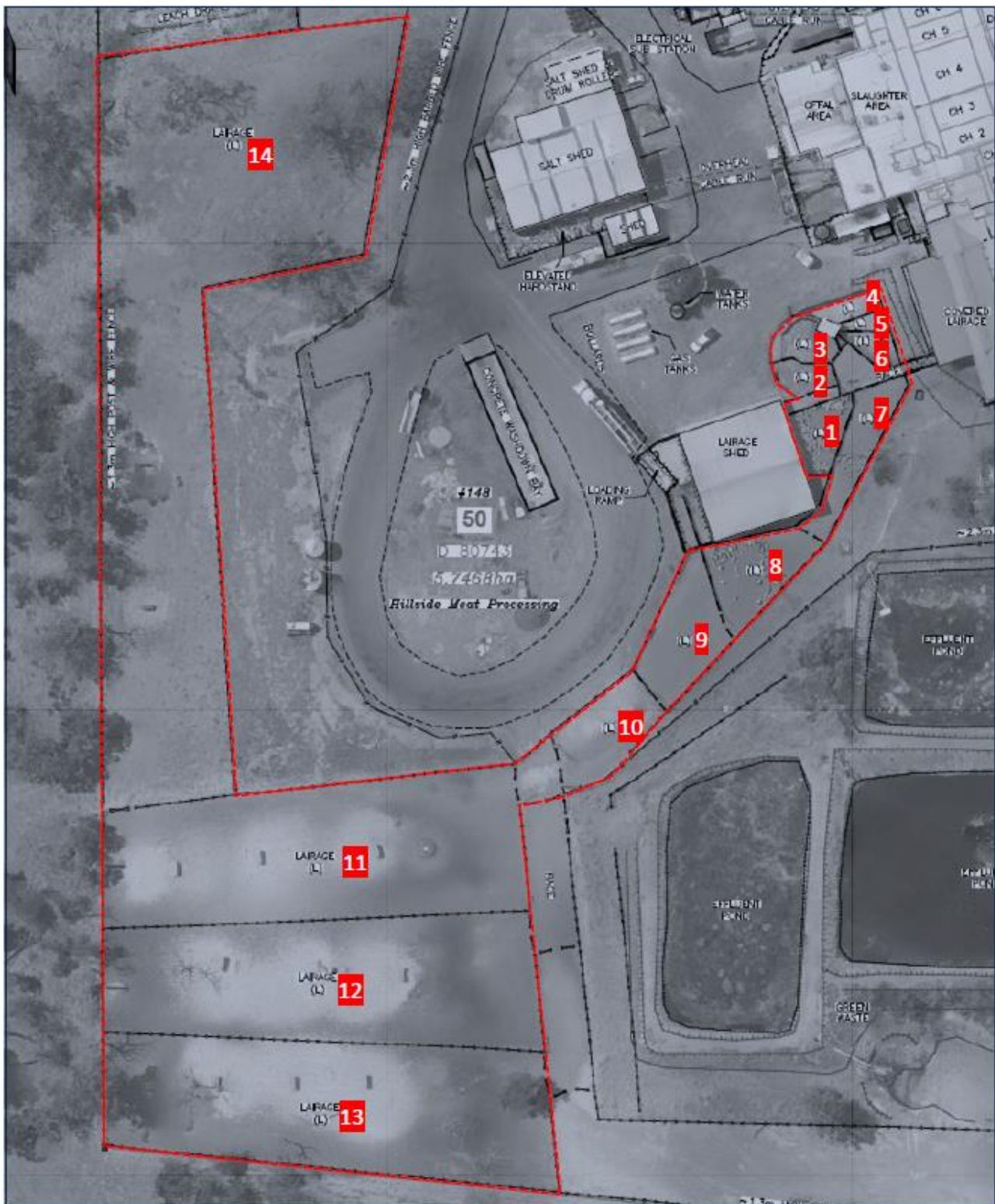


Figure 3: Uncovered lairage yards.

Note that outdoor yards 8 – 14 are not authorised for holding and feeding sheep under this licence and will be the subject of a subsequent licence application