



| | |
|------------------------------------|--|
| Licence number | L5320/1988/14 |
| Licence holder | Tronox Management Pty Ltd |
| ACN | 009 343 364 |
| Registered business address | Lot 22 Mason Road KWINANA BEACH WA 6167 |
| DWER file number | DER2016/000329-1 |
| Duration | 12/07/2011 to 11/07/2025 |
| Date of amendment | 17 July 2023 |
| Premises details | Tronox Kwinana Pigment Plant Lot 22 on Diagram 088339 Mason Road KWINANA BEACH WA 6167 |

Prescribed premises category description
(Schedule 1, *Environmental Protection Regulations 1987*)

Category 31: Chemical Manufacturing.

Premises (other than premises within category 32) on which chemical products are manufactured by a chemical process.

Category 60: Incineration.

Premises (other than premises within category 59) on which waste, excluding clean paper and cardboard, is incinerated.

Category 61: Liquid Waste Facility

Premises on which liquid waste produced on other premises (other than sewerage waste) is stored, reprocessed, treated or irrigated.

Category 67: Fuel Burning

Premises on which gaseous, liquid or solid fuel is burnt in a boiler for the supply of steam or in power generation equipment.

This licence is granted to the licence holder, subject to the attached conditions, on 17 July 2023, by:

MANAGER, PROCESS INDUSTRIES

an officer delegated under section 20 of the *Environmental Protection Act 1986* (WA)

Licence history

| Date | Reference number | Summary of changes |
|------------|------------------|--|
| 12/07/2011 | L5320/1988/14 | Licence granted. |
| 29/04/2016 | L5320/1988/14 | Notice of amendment to extend expiry date to 11/07/2025. |
| 20/09/2022 | W6701/2022/1 | Works approval issued for the staged construction of scour sand system upgrades and associated infrastructure. |
| 17/07/2023 | L5320/1988/14 | Licence holder-initiated amendment to update the licence to reflect upgrades to the sand scour system infrastructure conducted under works approval W6701/2022/1 including installation of a new baghouse and stack (S3047). |

Interpretation

In this licence:

- (a) the words 'including', 'includes' and 'include' in conditions mean "including but not limited to", and similar, as appropriate;
- (b) where any word or phrase is given a defined meaning, any other part of speech or other grammatical form of that word or phrase has a corresponding meaning;
- (c) where tables are used in a condition, each row in a table constitutes a separate condition;
- (d) any reference to an Australian or other standard, guideline, or code of practice in this licence:
 - (i) if dated, refers to that particular version; and
 - (ii) if not dated, refers to the latest version and therefore may be subject to change over time;
- (e) unless specified otherwise, any reference to a section of an Act refers to that section of the EP Act; and
- (f) unless specified otherwise, all definitions are in accordance with the EP Act.

NOTE: This licence requires specific conditions to be met but does not provide any implied authorisation for other emissions, discharges, or activities not specified in this licence.

Licence conditions

The licence holder must ensure that the following conditions are complied with:

Emissions and discharges

Air Pollution Control Conditions

- The licence holder shall during normal operations only discharge waste gases through the following discharge points as depicted in Table 1

Table 1: Atmospheric discharge points

| | | | |
|--------|---|---------|--|
| (i) | Snake stack (X532) | (xiv) | Tertiary cyclone bag filter (S416) |
| (ii) | FWGI stack (X253) | (xv) | Bulk bagging dust collector (S429) |
| (iii) | SWGI stack (X217) | (xvi) | Bag filter (D470) bulk bin (S470) |
| (iv) | STO stack (X261) | (xvii) | Steam superheater chimney (B401) |
| (v) | Synthetic Rutile Recovery Plant (SRRP) Dryer Stack (X684) | (xviii) | Swirl Fluidised Dryer (x2) (B405A&B) |
| (vi) | Vent Stack (X2256) | (xix) | Steam boiler stack (X501) |
| (vii) | Chlorinator sump scrubber (D204) | (xx) | TiCl ₄ Preheater chimneys (x4) (B301A, B, C and B3301D) |
| (viii) | Truck Unloading filter (S103) | (xxi) | Oxygen preheater chimneys (x4) (B305A, B, C and B3305D) |
| (ix) | Microniser tower snake (S469) | (xxii) | Bagging unit primary bag filter (S444) |
| (x) | Sand dust collector (S308) | (xxiii) | Microniser scrubber vacuum pump (G485) |
| (xi) | Dust collection bag filter (S406) | (xxiv) | Secondary oxygen heater stacks (x3) (B330A, B & C) |
| (xii) | Bag filter (D439) bagging bin (S439) | (xxv) | Toluene vent (D587) |
| (xiii) | Secondary cyclone bag filter (S417) | (xxvi) | Media transfer dust collector (S3047) |

Air Emissions Limits

- The licence holder shall control the discharge of NO_x so that during normal operations NO_x emission from the SRRP Dryer stack does not exceed 0.2 g/s. Compliance with this condition shall be demonstrated through an annual stack test conducted during normal operations.

Environmental Protection (Kwinana) (Atmospheric Waste) Policy 1999 Implementation Conditions

Sulphur Dioxide Discharge Limits - Plant

3. The licence holder shall control the discharge of sulfur dioxide from the industrial sources listed in the relevant determination and located within the boundary of the licensed premises so as to ensure that the quantities of sulfur dioxide discharged comply with the relevant determination.

Discharge Through Vent Stack

4. (a) The licence holder shall ensure waste process gas is not discharged through the Vent Stack unless necessary for the safe operation of the premises, or as otherwise approved by the Director.
(b) the licensee shall record the time, date and duration of the discharge, for each discharge of waste process gas through the Vent stack.
5. The information specified in condition 4 together with the accumulated duration of all waste process gases discharges for the year, shall be included in a report provided to the Director for each six-month period in accordance with condition 36.

Marine Pollution Control Conditions

Wastewater Discharge Point

6. The licence holder shall discharge all process wastewater to the on-site synthetic lined wastewater settling ponds, prior to discharge to the environment through the sub-marine outfall, or when the sub-marine outfall is not available, through the use of the approved "*Tiwest Alternate Discharge Plan*."

Wastewater Discharge Limits

7. The licence holder shall ensure that the limits cited in Table 2 are not exceeded for samples of wastewater collected in accordance with conditions 25 and 26 of this licence.

Table 2: Wastewater Discharge Limits

| Parameter | Discharge limit | Averaging Period |
|------------------|-----------------|--------------------------|
| Suspended Solids | 50 mg/L | Monthly |
| pH | 6.5 – 10.0 | Daily |
| Manganese | 12 mg/L | Weekly (shift composite) |

Monitoring

Monitoring Equipment Reliability

8. The licence holder shall maintain the continuous emissions monitoring systems specified in this licence to provide reliable and accurate data for:
 - (a) greater than 90 percent of the time that waste gases are emitted from the specified stack in every calendar month period; and
 - (b) greater than 95 percent of the time that waste gases are emitted from the specified stack in any period of twelve consecutive calendar months.

9. The licence holder shall maintain the ambient monitoring systems as specified in this licence to provide reliable and accurate data for:
- (a) greater than 90 percent of operating time of the premises in every calendar month period; and
 - (b) greater than 95 percent of the operating time of the premises in any period of twelve consecutive calendar months.

Stack Sampling

10. The licence holder shall maintain stack sampling ports on the atmospheric discharge points numbered (ii) to (v) in condition 1.

Air Emission Monitoring

11. The licence holder shall monitor and record each of the parameters as stated in Column 2 of Table 3, in the units as stated in Column 5 of Table 3, by the monitoring method as specified in Column 4 of Table 3, at the frequencies stated in Column 3 of Table 3, in the exit gases emitted from each of the sources specified in Column 1 of Table 3.

Table 3: Atmospheric Emission Point Sources

| Column 1 | Column 2 | Column 3 | Column 4 | Column 5 |
|------------------|---------------------------|----------------------|--------------------------------------|-----------------------------------|
| Source | Parameter to be monitored | Monitoring frequency | Monitoring Method | Units |
| FWGI stack | SO ₂ | Annual | USEPA Method 8 or USEPA Method 6 | mg/m ³ @ STP, dry g/s* |
| SWGI stack | SO ₂ | Annual | USEPA Method 8 or USEPA Method 6 | mg/m ³ @ STP, dry g/s* |
| SRRP Dryer stack | SO ₂ | Annual | USEPA Method 6C or USEPA Method 13.0 | mg/m ³ @ STP, dry g/s* |
| SRRP Dryer stack | NO _x | Annual | USEPA Method 7E | mg/m ³ @ STP, dry g/s* |

Note: *Mass emission rates (i.e., g/s) are to be calculated using the values derived from the concentration values of the parameter in question, and the volumetric flow rate

12. The licence holder shall continuously monitor SO₂ emissions from the STO stack while the stack is being used for the discharge of waste gases.

Emission Monitoring and Reporting – Sulfur Dioxide Monitoring Requirements of EPP

13. The licence holder shall maintain an emissions monitoring system consisting of approved monitoring equipment to monitor the discharge of waste gases from the STO stack
14. The emissions monitoring system shall measure or otherwise estimate using approved procedures, the following quantities for each specified source:
- (a) Mass emission rate of sulfur dioxide in g/s;
 - (b) Total volume emission rate of waste gases in m³/s; and
 - (c) Density of waste gases in g/m³.

Ambient Chlorine Monitors

15. The licence holder shall operate a network of at least seven ambient chlorine monitors (designated PAE1731, CAE1731, DAE1731, EAE1731, TAE1731, HAE1731, and NWE1731), positioned around the operations where there is a potential for chlorine release.
16. The licence holder shall maintain and calibrate the ambient chlorine monitors in accordance with the QAP where records shall be kept of these activities.
17. The licence holder shall ensure that the ambient chlorine detectors are set to alarm at a concentration which is not higher than 2.0ppm Cl., and the alarm shall stay set to alarm until the concentration is less than the alarm set-point.
18. The licence holder shall retain records for at least six months of all the results of ambient chlorine alarms recorded in accordance with condition 17 of this licence.

Ambient Sulfur Dioxide Monitoring

19. The licence holder shall undertake a program to monitor the ambient concentration of sulfur dioxide at the sites shown in Table 4, as outlined in Section 7.2 of EPA Bulletin 644 "*Development of an Environmental Protection Policy for Air Quality at Kwinana*", or otherwise as determined by the Director.

Table 4: Ambient Monitoring Sites

| Site | Location |
|------|--|
| 4 | Western Power gas pumping station, Abercrombie Road, Kwinana |
| 5 | Hydrocarbon pumping station, Miguel Road, Cockburn |
| 8 | Within the locality of Munster |

****See note after condition 35****

20. Prior to making any significant changes to the operation of the sulfur dioxide monitoring and data acquisition equipment the licence holder shall obtain approval from the Director for its use and the equipment operation and calibration procedures to be followed.

Meteorological Monitoring

21. The licence holder shall obtain meteorological data from meteorological monitoring system comprised of approved instruments and data acquisition equipment, at each location at which sulfur dioxide concentrations are being monitored in accordance with condition 19 above. The following meteorological parameters shall be monitored at each of these locations:
 - (a) Wind speed;
 - (b) Wind direction; and
 - (c) Air temperature.
22. The following additional meteorological parameters shall be monitored at ambient monitoring site 4:
 - (a) Wind direction standard deviation;
 - (b) Differential air temperature;
 - (c) Relative humidity or a related parameter;

- (d) Barometric pressure;
- (e) Net radiation; and
- (f) Rainfall.

Wastewater Monitoring Requirements

23. The licence holder shall maintain a sampling point and a flow recorder on the discharge from the on-site wastewater ponds to the sub-marine pipelines, such that:
 - (a) Water samples can easily be taken from the sampling point;
 - (b) Samples collected are representative of the wastewater discharged; and
 - (c) The sampling point and the flow recorder output is accessible at all times to an Inspector.
24. The licence holder shall, when discharging wastewater, continuously measure the flow at the location specified in condition 23 of this licence and record the daily total quantity in cubic metres.
25. The licence holder shall, when discharging wastewater, continuously measure the pH and suspended solids (which may be inferred from this turbidity) of wastewater discharged at the location specified in condition 23 of this licence and record the daily average of these parameters.
26. The licence holder shall sample and analyse wastewater from the location specified in condition 23 of this licence, in accordance with Table 5.

Table 5: Sample Analysis Parameters and Frequency of Analysis

| Parameter | Sampling Frequency | Analysis Frequency |
|--|---|--------------------|
| Aluminium, Cadmium, Calcium, Copper, Iron, Lead, Manganese, Sulphate, Titanium, Total Phosphorus, Vanadium, Zinc | Continuous automatic sampling during discharge. If the continuous automatic sampling system fails, licensee shall take at least every 4 hours of discharge a manual sample. | At least weekly |
| Mercury | Monthly Spot sample | Monthly |
| Total nitrogen | Weekly Spot sample | Weekly |

Note (1): Analyses are to be reported in milligrams per litre (mg/L) if appropriate.

Sediment Monitoring Programme – Cockburn Sound

27. The licence holder shall, during the period of the licence, undertake marine sediment quality monitoring in Cockburn Sound in accordance with the monitoring programme titled “*Tiwest Treated Process Wastewater Discharge Marine Monitoring Programme Proposal*”, prepared by Oceanica and dated March 2007.

General Monitoring Requirements

28. The licence holder shall ensure that all wastewater samples are collected in accordance with Australian Standard 5667.
29. The licence holder shall ensure that all wastewater samples are submitted to a laboratory with current NATA accreditation for the specified analyses.

Groundwater Monitoring

30. The licence holder shall conduct groundwater monitoring in accordance with the “*RICH Consulting Services – Groundwater Sampling, Measurement and Analysis plan, 2007*”
31. The licence holder shall ensure that all groundwater samples are collected in accordance with the relevant parts of Australian Standard 5667.
32. The licence holder shall ensure that all groundwater samples are submitted to a laboratory with current NATA accreditation for the specified analyses and analysed in accordance with the current “*Standard Methods for Examination of Water and Wastewater-APHA-AWWA-WEF*”.

Records and reporting

Reporting of Meteorological and Ambient Sulfur Dioxide Monitoring Data

33.
 - (a) The licensee shall, on a monthly basis, provide to the Director, data from each of the meteorological and sulfur dioxide monitoring stations at which monitoring is occurring in accordance with conditions 19, 20, 21 and 22.
 - (b) The meteorological data shall be provided as a time series listing on an approved computer-readable magnetic medium or via telemetry and in a format approved by the Director.
 - (c) The sulfur dioxide data shall be summarized in the form of one calendar month tables, one for each monitoring station, and shall contain for each day in the one month period the following:
 - (i) daily average;
 - (ii) maximum one-hour average, which may span midnight; and
 - (iii) percentage data recovery for the day.
 - (d) The sulfur dioxide data from each monitoring station shall be provided as time-series records of the recorded sulfur dioxide data on an approved computer-readable magnetic medium or via telemetry and in a format approved by the Director.
 - (e) The meteorological and sulfur dioxide monitoring data shall be provided to the Director no later than 28 days after the last day of the one calendar month period to which the data relates or within such longer period of time as is approved by the Director.
34. If the ambient sulfur dioxide concentration measured at any of the monitoring sites at which monitoring is occurring in accordance with condition 19 exceeds the standard or limit for that site, for any of the averaging period, as established by the EPP, then the licensee shall advise the CEO that this has occurred, by facsimile within two working days. Further, the licensee shall provide in writing within five working days in the format as required under condition 37 a listing of sulfur dioxide discharges from each source listed in the relevant determination and located within the boundary of the licensed premises, for the period which includes and extends one hour either side of the period in which the exceedance occurred.
35.
 - (a) As and when requested by the Director the licence holder shall provide, orally as soon as practicable and in written form within five working days of that request, data from the meteorological and sulfur dioxide monitoring systems.
 - (b) The requested data shall be provided as a time-series listing of the data in an approved format and shall cover the period requested by the Director.

Note on conditions 19-22 and 33-35.

Without limiting the licensee's responsibility and obligation to fulfill all of the requirements for monitoring and reporting specified in conditions 19-22 and 33-35, the CEO will, if so requested by the licence holder, approve the monitoring and reporting functions being performed on behalf of the licensee by a nominated agent, as part of a cooperative arrangement between industries. Notwithstanding this, advice on exceedances of the standard or limit together with sulfur dioxide emissions during those exceedances as required by condition 35 must be provided directly by the licensee.

Condition 19 requires that a total of three ambient sulfur dioxide monitoring stations are maintained in the relevant portion of the environment, pursuant to Clause 11(1)b of the EPP. Two of the monitoring stations are permanently located at sites 4 and 5.

- 36.** (a) The licence holder shall, for each six-month period, provide to the Director a report containing:
- (i) The results of air emission monitoring or estimation, at the frequency specified for each source, as specified by conditions 11 and 12;
 - (ii) Information related to the discharge of waste gases through the Vent Stack as specified by condition 5;
 - (iii) Results of the sulfur dioxide emission monitoring data as specified by condition 37; and
 - (iv) Results of the water monitoring as specified by conditions 26 and 30.
- (b) The report shall contain data collected over the preceding six-month period.
- (c) The report for the six-month period from 1 January shall be provided no later than 28 days after the last day of the six-month period to which the data relates.
- (d) The report for the six-month period from 1 July shall be included in the annual report.
- 37.** The licence holder shall provide to the Director, no later than 28 days after the last day of the six month period to which the data relates or within such a longer period of time as is approved by the Director, the emissions data for each quantity specified in condition 14 as a time-series listing of the recorded emissions data for period of six months on an approved computer-readable magnetic medium and in an approved format.
- 38.** As and when requested by the Director, the licence holder shall provide within five working days of that request, data from the emissions monitoring system. The emissions data shall be provided as a time-series listing of the data in an approved format and shall cover the period requested by the Director.
- 39.** The licence holder must record the following information in relation to complaints received by the licence holder (whether received directly from a complainant or forwarded to them by the Department or another party) about any alleged emissions from the premises:
- (a) the name and contact details of the complainant, (if provided);
 - (b) the time and date of the complaint;
 - (c) the complete details of the complaint and any other concerns or other issues raised; and
 - (d) the complete details and dates of any action taken by the licence holder to investigate or respond to any complaint.

- 40.** The licence holder must submit to the CEO by no later than 1 April, an Annual Environmental Report for that annual period for the conditions listed in Table 6, and which provides information in accordance with the corresponding requirement set out in Table 6.

Table 6: Annual Environmental Report

| Condition | Requirement |
|-----------|---|
| 42 | A summary of all exceedances reported in accordance with condition 42 during the previous annual reporting period |
| 8 | Compliance with condition 8 |
| 36 | Information and results required by condition 36 |
| 11 | Results of air emission monitoring or estimation as specified by condition 11 |
| 27 | Results of sediment monitoring as specified by condition 27 |
| N/A | The nature, quantity and plant source of process wastes disposed of, on or off-site to land |
| N/A | Details of the nature and quantity of all significant spillage to the environment |

- 41.** The licence holder must:
- (a) undertake an audit of their compliance with the conditions of this licence during the preceding annual period; and
 - (b) prepare and submit to the CEO by no later than 1 April an Annual Audit Compliance Report in the approved form.

Reporting of Exceedance of Licence Limits

- 42.** The licence holder shall notify the Director before 5pm on the next working day after becoming aware that any monitoring result has exceeded a reportable threshold as specified in any condition of this licence.
- 43.** The licence holder shall provide an exceedance report to the Director where any monitoring results are in excess of reportable threshold specified in any condition of this licence within 15 working days of that exceedance becoming known. The exceedance report shall contain:
- (a) The amount by which the threshold was exceeded, supported by the relevant monitoring data;
 - (b) Time series listing, where the exceedance was recorded by continuous emissions monitoring system, of the emissions monitoring data from the relevant source in an approved format, for the period which includes and extends one hour either side of the period of the exceedance;
 - (c) Reasons for the emission levels being in excess of the threshold;
 - (d) An outline of corrective action taken by the licensee to ensure that emission levels are maintained below the threshold, where applicable; and
 - (e) The emissions monitoring data provided within the exceedance report shall be certified on each page as a true and correct representation of the emissions

monitoring data by the signature of an authorised delegate of the licensee together with the printed name and position of that person within the company.

- 44.** The licence holder must maintain accurate and auditable books including the following records, information, reports, and data required by this licence:
- (a) the calculation of fees payable in respect of this licence;
 - (b) any maintenance of infrastructure that is performed in the course of complying with the conditions of this licence;
 - (c) monitoring programmes undertaken in accordance with conditions 11, 12, 13, 14, 15, 18, 19, 24, 25, 26, 27, 28, 29, 30, 31, and 32 of this licence; and
 - (d) complaints received under condition 39 of this licence.
- 45.** The books specified under condition 44 must:
- (a) be legible;
 - (b) if amended, be amended in such a way that the original version(s) and any subsequent amendments remain legible and are capable of retrieval;
 - (c) be retained by the licence holder for the duration of the licence; and
 - (d) be available to be produced to an inspector or the CEO as required.

Definitions

In this licence, the terms in Table 7 have the meanings defined.

Table 7: Definitions

| Term | Definition |
|---------------------------------------|--|
| ACN | Australian Company Number |
| Advise | means advise in writing from time to time by the Director. |
| Annual Audit Compliance Report (AACR) | means a report submitted in a format approved by the CEO (relevant guidelines and templates may be available on the Department's website). |
| annual period | a 12 month period commencing from 1 January until 31 December. |
| APHA-AWWA-WEF | means American Public Health; American Water Works Association; Water Environment Federation |
| Australian Standard 5667 | means the most recent version and relevant part of AS/NSZ 5667 |
| books | has the same meaning given to that term under the EP Act. |
| CEMS | means continuous emission monitoring system |

| Term | Definition |
|-------------------|---|
| CEO | means Chief Executive Officer of the Department. “submit to / notify the CEO” (or similar), means either: Director General Department administering the <i>Environmental Protection Act 1986</i> Locked Bag 10 Joondalup DC WA 6919 or: info@dwer.wa.gov.au |
| Cl | means chlorine |
| CO ₂ | means carbon dioxide |
| Director | means Director, Environmental Regulation Division of the Department of Environment and Conservation for and on behalf of the Chief Executive Officer as delegated under Section 20 of the Environmental Protection Act 1986 |
| Department | means the department established under section 35 of the <i>Public Sector Management Act 1994</i> (WA) and designated as responsible for the administration of the EP Act, which includes Part V Division 3. |
| discharge | has the same meaning given to that term under the EP Act. |
| emission | has the same meaning given to that term under the EP Act. |
| EPA | means Environmental Protection Authority |
| EP Act | <i>Environmental Protection Act 1986</i> (WA) |
| EP Regulations | <i>Environmental Protection Regulations 1987</i> (WA) |
| FWGI | means First Waste Gas Incinerator |
| g/s | means grams per second |
| g/m ³ | means grams per cubic metre |
| Inspector | means a person appointed as an Inspector under Section 88 of the <i>Environmental Protection Act 1986</i> |
| kg/m ³ | means kilograms per cubic metre, expressed at stack conditions |
| licence | refers to this document, which evidences the grant of a licence by the CEO under section 57 of the EP Act, subject to the specified conditions contained within. |
| licence holder | refers to the occupier of the premises, being the person specified on the front of the licence as the person to whom this licence has been granted. |

| Term | Definition |
|------------------------------|---|
| mg/m ³ @ STP, dry | means the concentration of the parameter in milligrams per cubic metre of dry air at 0 degrees Celsius and one atmospheric pressure (101.325 kilopascals) |
| m ³ /s | means cubic metres per second, expressed at stack conditions |
| mg/L | means milligrams per litre |
| monthly period | means a one-month period commencing from the second day of a month until first day of the immediately following month. |
| NATA | means National Association of Testing Authorities |
| NO _x | means oxides of nitrogen |
| O ₂ | means oxygen |
| ppm | means parts per million expressed as v/v |
| premises | refers to the premises to which this licence applies, as specified at the front of this licence and as shown on the premises maps (Figure 1) in Schedule 1 to this licence. |
| prescribed premises | has the same meaning given to that term under the EP Act. |
| QAP | means the licence holder's quality assurance program |
| Relevant determination | means a determination under clause 7(3) of the Environmental Protection (Kwinana) (Atmospheric Wastes) Policy 1999, determining the sulfur dioxide limits for the licensee |
| six-month period | means the six month periods commencing 1 January and 1 July |
| SO ₂ | means sulfur dioxide |
| SRRP | means Synthetic Rutile Recovery Plant |
| STO | means Stand-by Thermal Oxidiser |
| SWGI | means Second Waste Gas Incinerator |
| the EPP | means the <i>Environmental Protection (Kwinana) (Atmospheric Wastes) Policy 1999</i> |
| TiCl ₄ | means titanium tetrachloride |
| USEPA | means the United States Environmental Protection Authority |
| waste | has the same meaning given to that term under the EP Act. |
| waste process gases | means any gases produced while recycle chlorine is being fed into any of the chlorinators |

END OF CONDITIONS

Schedule 1: Maps

Premises map

The boundary of the prescribed premises is shown in the map below (Figure 1).

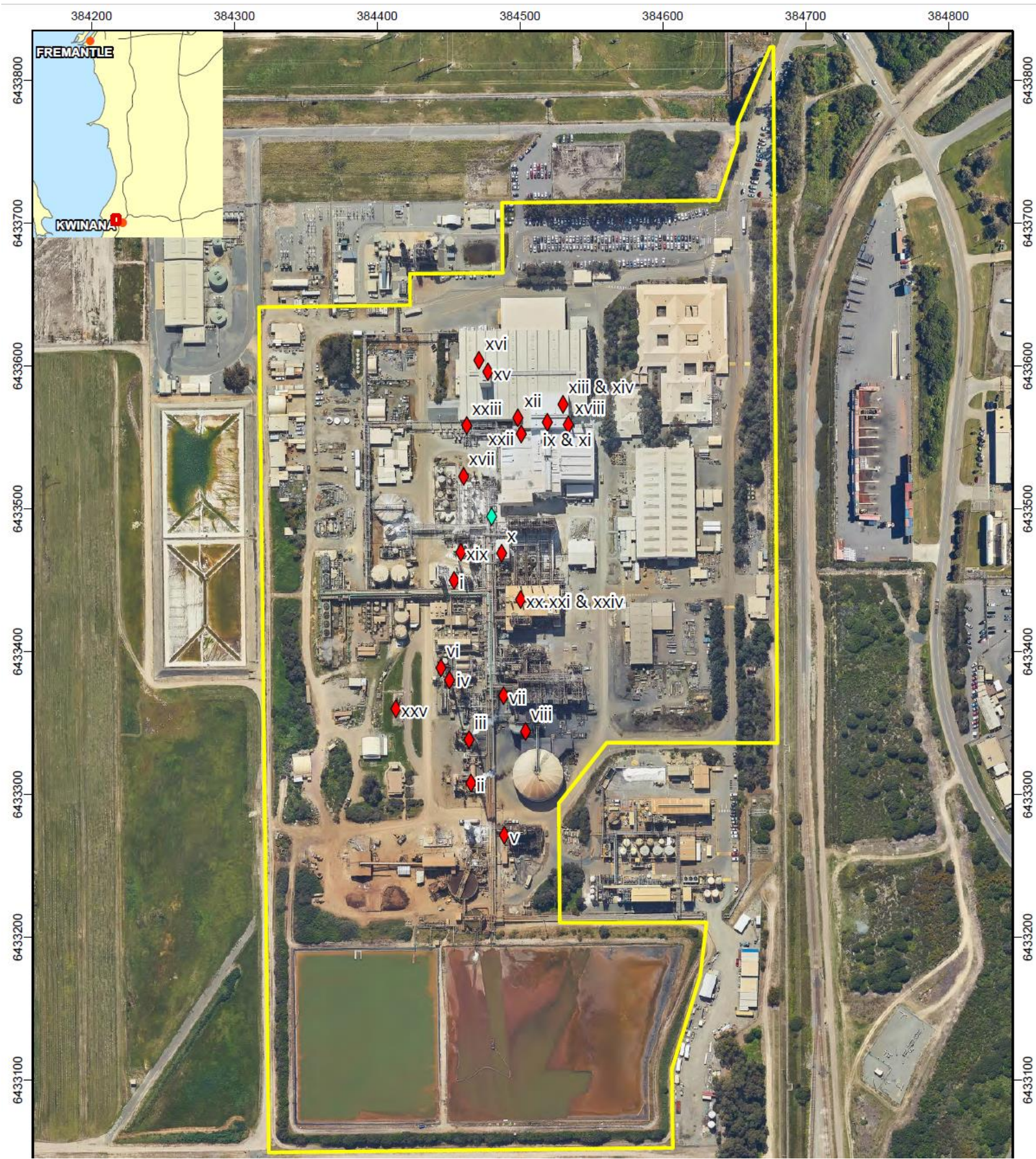


Figure 1: Map of the boundary of the prescribed premises and authorised emission points (red and blue markers)

Schedule 2: Premises boundary

The corners of the premises boundary are the coordinates listed in Table 8.

Table 8: Premises boundary coordinates (GDA2020)

| | Zone | Easting | Northing |
|-----|------|---------|----------|
| 1. | 50 | 384324 | 6433049 |
| 2. | 50 | 384317 | 6433641 |
| 3. | 50 | 384423 | 6433642 |
| 4. | 50 | 384487 | 6433665 |
| 5. | 50 | 384487 | 6433714 |
| 6. | 50 | 384638 | 6433716 |
| 7. | 50 | 384652 | 6433757 |
| 8. | 50 | 384652 | 6433770 |
| 9. | 50 | 384675 | 6433823 |
| 10. | 50 | 384677 | 6433823 |
| 11. | 50 | 384680 | 6433336 |
| 12. | 50 | 384560 | 6433336 |
| 13. | 50 | 384527 | 6433293 |
| 14. | 50 | 384527 | 6433210 |
| 15. | 50 | 384630 | 6433210 |
| 16. | 50 | 384626 | 6433173 |
| 17. | 50 | 384606 | 6433107 |
| 18. | 50 | 384606 | 6433052 |