



<b>Licence number</b>	L7847/2003/8	
<b>Licence holder</b>	AWE Perth Pty Ltd	
<b>ACN</b>	009 204 031	
<b>Registered business address</b>	Level 11, Exchange Tower 2 The Esplanade PERTH WA 6000	
<b>DWER file number</b>	DER2013/000333	
<b>Duration</b>	30/03/2022 to	29/03/2032
<b>Date of amendment</b>	27/10/2023	
<b>Premises details</b>	Waitsia Gas Project Stage 1 Pye Road YARDARINO WA 6525  Legal description – As shown and described by the coordinates in the map in Schedule 1	

Prescribed premises category description (Schedule 1, Environmental Protection Regulations 1987)	Assessed design throughput
Category 10: Oil or gas production from wells: premises, whether on land or offshore, on which crude oil, natural gas or condensate is extracted from below the surface of the land or the seabed, as the case requires, and is treated or separated to produce stabilised crude oil, purified natural gas or liquefied hydrocarbon gases.	500,000 tonnes per annual period of natural gas

This licence is granted to the licence holder, subject to the attached conditions, on 27 October 2023 by:

**MANAGER, PROCESS INDUSTRIES**

an officer delegated under section 20 of the *Environmental Protection Act 1986* (WA)

## Licence history

Date	Instrument	Summary of changes
21/02/2008	L7847/2003/5	Licence re-issue
06/03/2014	L7847/2003/7	Licence re-issue and converted into the latest format
29/04/2016	L7847/2003/7	Notice of amendment: to extend the duration of the licence
19/11/2019	L7847/2003/7	Amendment to premises boundary, inspection frequency and registered address details. Amendment was granted in the form of a revised licence, including consolidation of amendment notice issued on 29 April 2016.
27/02/2020	W6320/2019/1	Works approval for Stage 1 expansion project.
14/04/2021	L7847/2003/7	Amendment to authorise the operation of upgraded and new infrastructure relating to Stage 1 expansion project.
23/4/2021	L7847/2003/7	CEO initiated amendment to correct a clerical error
21/03/2022	L7847/2003/8	Licence re-issue - commencement date of licence 30/03/3022
24/04/2023	L7847/2003/8	CEO initiated amendment to adjust the premises boundary to incorporate all operational gas gathering infrastructure (wells and flowlines).
27/10/2023	L7847/2003/8	CEO initiated amendment to give effect to the Minister for Environment's determination on appeal 011-022

## Conditions subject to appeal determination

This licence was amended on 27 October 2023 to give effect to the Minister for Environment's determination on appeal 011-022. Conditions that have been amended as a result of the appeal determination are marked in **bold and underlined**.

## Interpretation

In this licence:

- (a) the words 'including', 'includes' and 'include' in conditions mean "including but not limited to", and similar, as appropriate;
- (b) where any word or phrase is given a defined meaning, any other part of speech or other grammatical form of that word or phrase has a corresponding meaning;
- (c) where tables are used in a condition, each row in a table constitutes a separate condition;
- (d) any reference to an Australian or other standard, guideline, or code of practice in this licence:
  - (i) if dated, refers to that particular version; and
  - (ii) if not dated, refers to the latest version and therefore may be subject to change over time;
- (e) unless specified otherwise, any reference to a section of an Act refers to that section of the EP Act; and
- (f) unless specified otherwise, all definitions are in accordance with the EP Act.

**NOTE:** This licence requires specific conditions to be met but does not provide any implied authorisation for other emissions, discharges, or activities not specified in this licence.

## Licence conditions

The licence holder must ensure that the following conditions are complied with:

### Infrastructure and equipment

1. The licence holder must ensure the site infrastructure and equipment listed in Table 1 and located at the corresponding infrastructure location is maintained and operated in accordance with the corresponding operational requirement set out in that table.

**Table 1: Infrastructure and equipment requirements**

Site infrastructure and equipment	Infrastructure and operational requirements	Infrastructure location
<b><i>Xyris Gas Production Facility</i></b>		
Gas processing plant	Operation of the vent must only occur when the processing plant is undergoing maintenance and needs to be depressurised	"Xyris Production Facility" in Schedule 1: Premises map and key infrastructure layout
Slug catcher	Slug catcher liquids must be directed to the gas breakout tank	"Slug catcher" in Schedule 1: Map of key infrastructure and emission points (XPF)
Mercury removal unit	Spent mercury must be removed off-site by a licensed controlled waste carrier	"MRU" in Schedule 1: Map of key infrastructure and emission points (XPF)
Tanks area: <ul style="list-style-type: none"> <li>- PW storage tank</li> <li>- Methanol storage tank</li> <li>- Liquid stock tank</li> <li>- Gas breakout tank</li> <li>- Oil collection tank</li> </ul>	Each tank must be maintained on an impermeable bunded hardstand surface, where drainage and spillages are contained within individual concrete-lined sumps	"Tanks Area" in Schedule 1: Map of key infrastructure and emission points (XPF)
W-02 evaporation pond	<ul style="list-style-type: none"> <li>- Must be lined to achieve a hydraulic conductivity <b><u>equal to or no less than</u></b> <math>1 \times 10^{-9}</math> m/s; and</li> <li>- Water levels must be maintained at least 500 mm below the top of the pond wall</li> </ul>	"W-02 Evaporation Pond" in Schedule 1: Map of key infrastructure and emission points
<b><u>PW pipeline</u></b>	<b><u>During discharge to the W-02 evaporation pond, must maintain accurate flow records at the produced water pump outlet and the discharge point to the W-02 evaporation pond using a flowmeter.</u></b>	<b><u>"W-02 Tie-in to Waitsia Gas Flowline" in Schedule 1: Map of key infrastructure and emission points</u></b>
<b><i>Hovea Gas Production Facility</i></b>		
Evaporation pond	<ul style="list-style-type: none"> <li>- Must be lined to achieve a hydraulic conductivity <b><u>equal to or no less than</u></b> <math>1 \times 10^{-9}</math> m/s; and</li> <li>- Water levels must be maintained at least 500 mm below the top of the pond wall</li> </ul>	"Containment pond" in Schedule 1: Premises map and key infrastructure layout
Turkey's nest		

## Premises operation

2. The licence holder must undertake inspections of the scope and type and at the corresponding frequency specified in Table 2.

**Table 2: Inspection of infrastructure requirements table**

Scope of inspection	Type of inspection	Frequency of inspection
Evaporation pond(s), turkey's nest(s)	Visual integrity, leak assessment and freeboard capacity	Weekly whilst operating; Monthly if not operating
<b><u>Pipeline carrying PW</u></b>	<b><u>Visual integrity and leak assessment</u></b>	<b><u>Weekly whilst operating; Monthly if not operating</u></b>
	<b><u>Must undertake daily reconciliation of the metered flow in the PW pipeline discharged to the W-02 evaporation pond</u></b>	<b><u>Daily</u></b>

3. The licence holder must:
- (a) maintain a written log of all inspections undertaken in accordance with condition 2, with each inspection signed off by the person who conducted the inspection; and
  - (b) where any inspection required by condition 2 identifies that an appropriate level of environmental protection is not being maintained, **or discrepancies have been identified in flowmeter records**, take corrective action to mitigate adverse environmental consequences as soon as practicable.

## Review of lighting design

4. **The licence holder must:**
- (a) **by the 31 January 2024, undertaken a review of the lighting design for all lighting infrastructure against the design principles listed in Appendix A - Best Practice Lighting Design of the National Light Pollution Guidelines; and**
  - (b) **by 20 March 2024, prepare and submit to the CEO a report that details whether lighting at the premises is consistent with the design principles listed in that document.**
5. **Where an item of lighting infrastructure has been identified as being materially inconsistent with the design principles listed in the National Light Pollution Guidelines, the licence holder must detail proposed measures and timeframes to address the inconsistencies in the report required by condition 4(b).**

## Emissions

### Point source emissions to air

6. The licence holder must ensure that where waste is emitted to air from the emission points listed in Table 3, and identified on the map of key infrastructure and emission points (XPF) in Schedule 1, it is done so in accordance with the conditions of this licence.

**Table 3: Emissions to air**

Emission	Emission point	Emission point location
BTEX, Hg	XPF plant vent stack	Item F in Schedule 1: Map of key infrastructure and emission points (XPF)
CO, NO <sub>x</sub> , SO <sub>2</sub> , BTEX, Hg, PM <sub>10</sub> and PM <sub>2.5</sub>	Gas compressor exhaust	Item B in Schedule 1: Map of key infrastructure and emission points (XPF)
	Gas engine alternator exhaust	Item A in Schedule 1: Map of key infrastructure and emission points (XPF)

## Monitoring

### General monitoring

7. The licence holder must ensure that:
  - (a) monthly monitoring is undertaken at least 15 days apart; and
  - (b) annual monitoring is undertaken at least 9 months apart.
8. The licence holder must ensure that all monitoring equipment used on the premises to comply with the conditions of this licence is calibrated in accordance with the manufacturer's specifications.
9. The licence holder must, where the requirements for calibrations cannot be practicably met, or a discrepancy exists in the interpretation of the requirements, bring these issues to the attention of the CEO accompanied with a report comprising details of any modifications made to the methods.

### Monitoring of point source emissions to air

10. The licence holder must undertake the monitoring in Table 4 according to the specifications in that table.

**Table 4: Monitoring of emissions to air**

Monitoring point ref	Parameter	Unit	Frequency
XPF plant vent stack Item F in Schedule 1: Map of key infrastructure and emission points (XPF)	Total volume gas vented	m <sup>3</sup>	Annual

### Monitoring of inputs and outputs

11. The licence holder must undertake the monitoring in Table 5 according to the specifications in that table.

**Table 5: Monitoring of inputs and outputs**

Input / Output	Parameter	Units	Frequency
Water treatment chemicals	Volume consumed	kL/kg	Monthly

## Records and reporting

- 12.** All information and records required by the licence must:
- (a) be legible;
  - (b) if amended, be amended in such a way that the original and subsequent amendments remain legible and are capable of retrieval;
  - (c) except for records listed in condition 12(d), be retained for at least 6 years from the date the records were made or until the expiry of the licence or any subsequent licence; and
  - (d) for those following records, be retained until the expiry of the licence and any subsequent licence:
    - (i) off-site environmental effects; or
    - (ii) matters which affect the condition of the land or waters.
- 13.** The licence holder must:
- (a) undertake an audit of their compliance with the conditions of this licence during the preceding annual period; and
  - (b) prepare and submit to the CEO, by no later than 30 September in each year, an Annual Audit Compliance Report in the approved form.
- 14.** The licence holder must implement a complaints management system that as a minimum, records the number and details of complaints received concerning the environmental impact of the activities undertaken at the premises and any action taken in response to the complaint.
- 15.** The licence holder must maintain accurate and auditable books including the following records, information, reports and data required by this licence:
- (a) the calculation of fees payable in respect of this licence;
  - (b) the maintenance of infrastructure required to ensure that it is kept in good working order in accordance with condition 1;
  - (c) monitoring undertaken in accordance with conditions 10 & 11; and
  - (d) complaints received under condition 14.
- 16.** The licence holder must submit to the CEO, by 30 September in each year, an annual environmental report containing the information listed in Table 6.

**Table 6: Annual environmental report**

Condition or table	Parameter
-	Summary of any failure or malfunction of any pollution control equipment and any environmental incidents that have occurred during the annual period and any action taken
Table	Monitoring of point source emissions to air
Table	Monthly consumption of water treatment chemicals
Condition 13	Compliance (AACR)
Condition 14	Complaints summary

## Definitions

In this licence, the terms in Table 7 have the meanings defined.

**Table 7: Definitions**

Term	Definition
Annual Audit Compliance Report (AACR)	means a report submitted in a format approved by the CEO (relevant guidelines and templates may be available on the Department's website)
annual period	means the inclusive period from 1 July the previous year and ending on 30 June the following year
books	has the same meaning given to that term under the EP Act
BTEX	means the volatile organic compounds benzene, toluene, ethylbenzene and xylene
CEO	means Chief Executive Officer of the Department of Water and Environmental Regulation. "submit to / notify the CEO" (or similar) means either: Director General Department Administering the <i>Environmental Protection Act 1986</i> Locked Bag 10 JOONDALUP DC WA 6919 or: <a href="mailto:info@dwer.wa.gov.au">info@dwer.wa.gov.au</a>
condition	means a condition to which this licence is subject under s.62 of the EP Act
controlled waste carrier	means a person licensed as a carrier under the <i>Environmental Protection (Controlled Waste) Regulations 2004</i>
Department	means the department established under section 35 of the <i>Public Sector Management Act 1994</i> and designated as responsible for the administration of the EP Act, which includes Part V, Division 3
discharge	has the same meaning given to that term under the EP Act
emission	has the same meaning given to that term under the EP Act
environmentally hazardous materials	means material (either solid or liquid raw materials, materials in the process of manufacture, manufactured products, products used in the manufacturing process, by-products and waste), which if discharged into the environment from or within the premises may cause pollution or environmental harm
EP Act	means the <i>Environmental Protection Act 1986</i> (WA)
freeboard	means the distance between the maximum water surface elevations and the top of retaining banks or structures at their lowest point
hardstand	means a surface with a permeability of $10^{-9}$ metres/second or less
licence	means this document, which evidences the grant of a licence by the CEO under section 57 of the EP Act, subject to the specified conditions contained within
licence holder	refers to the occupier of the premises being the person to whom this licence has been granted, as specified at the front of this licence
National Light Pollution Guidelines	means the document <i>National Light Pollution Guidelines for Wildlife Including Marine Turtles, Seabirds and Migratory Shorebirds</i> , Commonwealth of Australia (Ver 1.0, January 2020)
Produced Water (PW)	means water that is produced as a by-product during the extraction of natural gas

premises	means the premises to which this licence applies, as specified at the front of this licence and as shown on the map in Schedule 1 to this licence
prescribed premises	has the same meaning given to that term under the EP Act
Schedule 1	means Schedule 1 of this licence, unless otherwise stated
waste	has the meaning defined in the <i>Environmental Protection Act 1986</i>

---

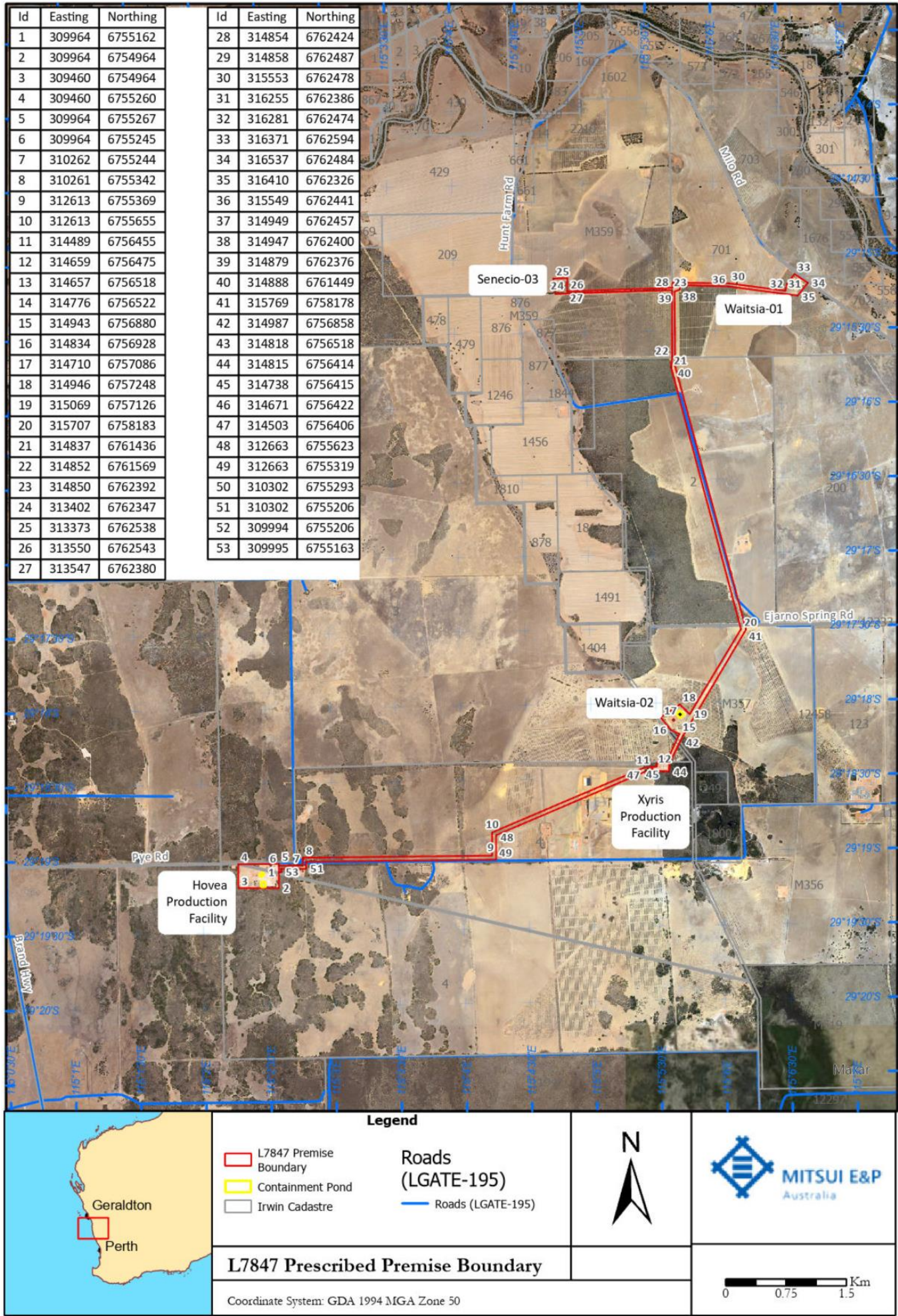
**END OF CONDITIONS**



Schedule 1: Maps

Premises map and key infrastructure layout

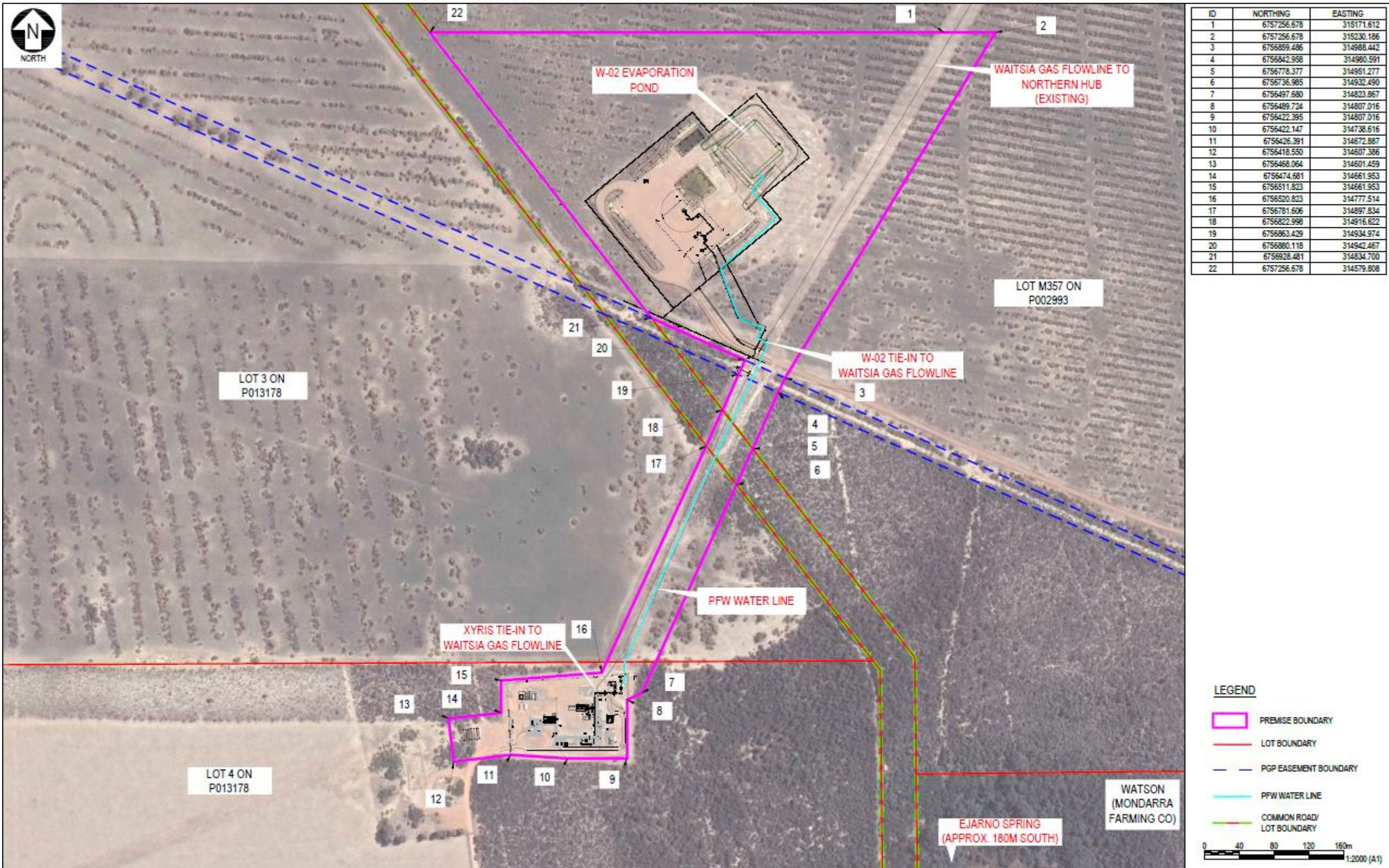
The boundary of the prescribed premises is shown in the map below. The red line depicts the premises boundary.





Map of key infrastructure and emission points

The location of key infrastructure and emission points defined in conditions of this licence are shown below.





Map of emission points and monitoring locations (XPF)

The location of the emission and monitoring points at the XPF defined in conditions of this licence are shown below.

