



Works approval number	W6651/2022/1
Works approval holder	Australian Potash Limited
ACN	149 390 394
Registered business address	Suite 31, 22 Railway Road SUBIACO WA 6008
DWER file number	DER2021/000404
Duration	28/07/2022 to 27/07/2027
Date of issue	28/07/2022
Date of amendment	7/11/2023
Premises details	Lake Wells Potash Project Legal description - Part of M38/1275 and M38/1274 As defined by the coordinates in Schedule 1

Prescribed premises category description (Schedule 1, <i>Environmental Protection Regulations 1987</i>)	Assessed design capacity
Category 85: Sewage facility: premises — a) on which sewage is treated (excluding septic tanks); or b) from which treated sewage is discharged onto land or into waters.	50 m ³ per day
Category 89: Putrescible landfill site: premises on which waste (as determined by reference to the waste type set out in the document entitled "Landfill Waste Classification and Waste Definitions 1996" published by the Chief Executive Officer, as amended from time to time) is accepted for burial.	2, 400 tonnes per annum

This works approval is granted to the works approval holder, subject to the attached conditions, on 7 November 2023 by:

Adam Green
A/MANAGER WASTE INDUSTRIES
REGULATORY SERVICES

an officer delegated under section 20 of the *Environmental Protection Act 1986* (WA)

Works approval history

Date	Reference number	Summary of changes
28/07/2022	W6651/2022/1	Works approval granted.
7/11/2023	W6651/2022/1	Amended works approval granted.

Interpretation

In this works approval:

- (a) the words 'including', 'includes' and 'include' in conditions mean "including but not limited to", and similar, as appropriate;
- (b) where any word or phrase is given a defined meaning, any other part of speech or other grammatical form of that word or phrase has a corresponding meaning;
- (c) where tables are used in a condition, each row in a table constitutes a separate condition;
- (d) any reference to an Australian or other standard, guideline, or code of practice in this works approval:
 - (i) if dated, refers to that particular version; and
 - (ii) if not dated, refers to the latest version and therefore may be subject to change over time;
- (e) unless specified otherwise, any reference to a section of an Act refers to that section of the EP Act; and
- (f) unless specified otherwise, all definitions are in accordance with the EP Act.

NOTE: This works approval requires specific conditions to be met but does not provide any implied authorisation for other emissions, discharges, or activities not specified in this works approval.

Works approval conditions

The works approval holder must ensure that the following conditions are complied with:

Construction phase

Infrastructure and equipment

1. The works approval holder must:
 - (a) construct and/or install the infrastructure and equipment;
 - (b) in accordance with the corresponding design and construction or installation requirements; and
 - (c) at the corresponding infrastructure location;as set out in Table 1.

Table 1: Design and construction or installation requirements

Infrastructure	Design and construction / installation requirements	Infrastructure location
Containerised sequence batch reactor (SBR) wastewater treatment plant (WWTP)	<p>SBR WWTP shall comprise:</p> <ul style="list-style-type: none">• 1 x 50,000 litre raw sewage balance (storage) tank;• 1 x 50,000 litre waste activated sludge tank• Shipping container housed 50, 000 litre capacity SBR, Primary, Flow Balance and Plant Room;• 2 x 50,000 litre irrigation (treated effluent) storage tanks;• shipping container housed Class A polishing system; and• Chlorine dosing unit. <p>WWTP equipped with instrumentation, audible and visual alarming, and programmable logic controller to alert operator of any faults, and curtail any loss of containment.</p> <p>WWTP fitted with overflow alarms.</p> <p>All storage components constructed of corrosion resistant and impermeable material (i.e., polyethylene, concrete or lined with HDPE).</p> <p>WWTP shall be fitted with an inlet screen for the removal and collection of gross pollutants prior to treatment.</p> <p>WWTP shall be equipped with a sealed connection point for pump-out of excess sludge for disposal to an approved landfill facility.</p> <p>Flow meter installed directly on the outlet of the treated effluent tanks.</p> <p>Chemicals, including sodium hypochlorite, must be stored on self-bunded pallets.</p> <p>Chemicals must be stored in accordance with Australian Standard AS3780.</p> <p>An earthen firebreak of at least 3 m in width shall be established around the WWTP.</p>	SBR WWTP as depicted in Figure 3

Infrastructure	Design and construction / installation requirements	Infrastructure location																
	<p>Designed and constructed to treat a maximum daily inflow of 50 m³/day, and achieve the following emissions standards:</p> <table><tr><th>Parameter</th><th>Treated effluent quality</th></tr><tr><td>5-day biochemical oxygen demand (BOD₅)</td><td><20 mg/L</td></tr><tr><td>Total suspended solids</td><td><30 mg/L</td></tr><tr><td>Total nitrogen</td><td><20 mg/L</td></tr><tr><td>Ammoniacal nitrogen (NH₃-N)</td><td><1 mg/L</td></tr><tr><td>Total phosphorus</td><td><5 mg/L</td></tr><tr><td>Fecal coliforms</td><td><100 CFU/100 ml</td></tr><tr><td>Dissolved oxygen</td><td>>2 mg/L</td></tr></table>	Parameter	Treated effluent quality	5-day biochemical oxygen demand (BOD ₅)	<20 mg/L	Total suspended solids	<30 mg/L	Total nitrogen	<20 mg/L	Ammoniacal nitrogen (NH ₃ -N)	<1 mg/L	Total phosphorus	<5 mg/L	Fecal coliforms	<100 CFU/100 ml	Dissolved oxygen	>2 mg/L	
Parameter	Treated effluent quality																	
5-day biochemical oxygen demand (BOD ₅)	<20 mg/L																	
Total suspended solids	<30 mg/L																	
Total nitrogen	<20 mg/L																	
Ammoniacal nitrogen (NH ₃ -N)	<1 mg/L																	
Total phosphorus	<5 mg/L																	
Fecal coliforms	<100 CFU/100 ml																	
Dissolved oxygen	>2 mg/L																	
Spray-field irrigation area and pipeline	<p>Minimum spray-field irrigation area of 137,124 m²</p> <p>Irrigation field enclosed with a three strand 1.2 m high wire fence with lockable vehicle access gates.</p> <p>5m wind-drift buffer between outermost spray-fields and perimeter fence.</p> <p>Safety signage erected every 200 m of fencing.</p> <p>Irrigation pipework fitted with branch-line flush valves.</p> <p>Designed to irrigate treated wastewater evenly over the irrigation area without ponding or pooling.</p>	Spray-filed irrigation area as depicted in Figure 3																
Landfill facility	<p>Each trench is to be a maximum of 30 m in length, 4 m in depth and 4 m in width.</p> <p>A minimum separation distance of 3 m is to be maintained between the base of the trench and the highest level of the superficial aquifer.</p> <p>A 1 m earthen safety bund is installed around the crown of each trench.</p> <p>Perimeter fence with lockable vehicle access gates installed around the boundary of the landfill area to prevent the entry of stock and fauna.</p> <p>Perimeter fence shall be constructed to a minimum height of 1.4 m, with a 600 mm wire mesh skirt/apron to exclude digging fauna.</p> <p>Vehicle access points shall be constructed with a solid concrete or bitumen base to prevent wheel rutting.</p> <p>Ensure that the base of the premises entrance gates will, when</p>	Landfill facility as depicted in Figure 2																

Infrastructure	Design and construction / installation requirements	Infrastructure location
	<p>closed, not allow cat or fox access.</p> <p>Landfill perimeter fence shall be maintained to ensure fauna exclusion controls remain effective.</p> <p>An earthen firebreak of at least 3 m in width shall be established around the boundary of the landfill (outside fence).</p>	

Emissions

2. The works approval holder must ensure that no visible dust generated from construction or landfilling activities crosses the boundary of the premises.

Compliance reporting

3. The works approval holder must within 30 calendar days of an item of infrastructure or equipment required by condition 1 being constructed and/or installed:
 - (a) undertake an audit of their compliance with the requirements of condition 1; and
 - (b) prepare and submit to the CEO an Environmental Compliance Report on that compliance.
4. The Environmental Compliance Report required by condition 3, must include as a minimum the following:
 - (a) certification by a suitably qualified engineer that the items of infrastructure or component(s) thereof, as specified in condition 1, have been constructed in accordance with the relevant requirements specified in condition 1;
 - (b) as constructed plans and a detailed site plan for each item of infrastructure or component of infrastructure specified in condition 1; and
 - (c) be signed by a person authorised to represent the works approval holder and contains the printed name and position of that person.

Environmental commissioning phase

Environmental commissioning requirements and emission limits

5. The works approval holder must commission the WWTP and associated irrigation spray-field for a period of no longer than 90 calendar days, in accordance with the conditions of this works approval, following submission of the report required by condition 3 and condition 4.

Monitoring during environmental commissioning

6. The works approval holder must monitor emissions:
 - (a) from the monitoring location;
 - (b) for the corresponding parameter;
 - (c) in the corresponding unit;
 - (d) at the corresponding frequency;
 - (e) for the corresponding Averaging Period; and

- (f) using the corresponding method,
as set out in Table 2 during the commissioning period.

Table 2: Commissioning monitoring

Monitoring location	Parameter	Unit	Frequency	Effluent Water Quality Specifications	Averaging period	Method
Treated wastewater	Effluent throughput	m ³ /day	Continuous	≤50	24 hours	-
outlet to the spray-field irrigation field	5-day biochemical oxygen demand (BOD5)	mg/L	Fortnightly	<20	Spot sample (Within 7 days of commencement of discharge)	AS/NZS 5667.10 – 1998
	Total suspended solids			<30		
	Total nitrogen			<20		
	Ammoniacal nitrogen (NH ₃ -N)			<1		
	Total phosphorus			<5		
	Residual chlorine			0.2 to 2.0		
	Dissolved oxygen			>2		
	Fecal coliforms (<i>E. coli</i>)	CFU/ 100 ml		<100		
	pH ¹	pH units		6.5 - 8.9		

Note 1: In-situ, non-NATA accredited analysis permitted

7. The works approval holder must submit an Environmental Commissioning Report for the WWTP and associated irrigation spray-field, to the CEO within 30 days of the completion of commissioning. The report must include but is not limited to:
- (a) a summary of the monitoring results recorded under condition 6;
 - (b) a list of any original monitoring reports submitted to the works approval holder from third parties for the commissioning period;

- (c) a summary of the environmental performance of the plant and associated irrigation spray-field as installed, against the design specification set out in condition 1; and
- (d) where they have not been met, measures proposed to meet the design specification and/or works approval conditions, together with timescales for implementing the proposed measures.

Time limited operations phase

Commencement and duration

8. The works approval holder may only commence time limited operations for an item of infrastructure identified in condition 1:
 - (a) Where an item of infrastructure is not authorised to undertake environmental commissioning, the Environmental Compliance Report as required by condition 3 has been submitted by the works approval holder for that item of infrastructure; and
 - (b) Where an item of infrastructure is authorised to undertake environmental commissioning under condition 5, the Environmental Commissioning Report for that item of infrastructure as required by condition 7 has been submitted by the works approval holder ; and
 - (c) Where the Effluent Water Quality Specifications set out in Table 2 are achieved within a single sampling event.
9. The works approval holder may conduct time limited operations for an item of infrastructure specified in condition 1:
 - (a) For a period not exceeding 180 calendar days from the day the works approval holder meets the requirements of condition 8 for that item of infrastructure; or
 - (b) Until such time as a licence or registration for that item of infrastructure is granted in accordance with Part V of the *Environmental Protection Act 1986*, if one is granted before the end of the period specified in condition 9(a).

Waste management and disposal

10. The works approval holder must ensure that only waste generated from the Lake Wells Potash Project is disposed of on the premises.
11. The works approval holder must only dispose of the waste types at the rates specified, and using the disposal method specified, set out in Table 3.

Table 3: Waste disposal

Waste type ¹	Disposal rate	Disposal method
Clean fill	Combined total of 2, 400 tonnes per annum	Disposed to landfill trench specified in Table 1, compacted and covered with a minimum 300 mm of Inert Waste Type 1 or Clean Fill: (a) at least once per week while in use ² ; and (b) when filling will cease for a period longer than a month.
Inert waste types 1 and 2		
Uncontaminated fill		
Putrescible waste		

Contaminated solid waste meeting the acceptance criteria specified for Class II landfills		
Special waste type 2		<p>Placed at the bottom of the trench and immediately covered with 300 mm of Inert Waste Type 1 or Clean Fill.</p> <p>The disposal area(s) for Special Waste Type 2 must be defined and recorded by grid references on a site plan, and make any information that is recorded available for viewing or copying during any inspection of the premises.</p> <p>Ensure the disposal areas for Special Waste Type 2 are not excavated or uncovered during subsequent landfill operations.</p>

Note 1: as defined in the Landfill Definitions.

Note 2: As per cover requirements set out in the Rural Landfill Regulations.

- 12.** The works approval holder must ensure that:
- (a) All reasonable and practicable measures are taken to ensure that no windblown waste escapes from the premises; and
 - (b) Any windblown waste is collected on a minimum weekly basis and returned to the landfill trench or otherwise appropriately contained.
 - (c) The adjacent spinifex sandplain is inspected for windblow waste on a minimum monthly basis, and any identified waste is collected and returned to the landfill trench or otherwise appropriately contained.

Monitoring during time limited operations

13. The works approval holder must monitor treated wastewater emissions during time limited operations in accordance with requirements set out in Table 4.

Table 4: WWTP emissions monitoring during time limited operations.

Monitoring location	Parameter	Unit	Frequency	Treated Water Quality Specifications	Averaging period	Method
Treated wastewater outlet to the spray-field irrigation field	Effluent throughput	m ³ /day	Continuous	≤50	24 hours	-
	5-day biochemical oxygen demand (BOD ₅)	mg/L	Quarterly	<20	Spot sample	AS/NZS 5667.10 – 1998 Measurement of pH with a serviced and calibrated field water quality meter is permitted. Measurement of residual free chlorine with field-based equipment is permitted.
	Total suspended solids			<30		
	Total nitrogen			30		
	Ammoniacal nitrogen (NH ₃ -N)			<1		
	Total phosphorus			<15		
	Dissolved oxygen			>2		
	Residual chlorine		Daily	0.2 to 2.0		For all other parameters, samples must be submitted to and tested by a laboratory with NATA accreditation.
	Fecal coliforms (<i>E. coli</i>)	CFU/ 100 ml	Monthly	<100		
	pH	pH units	Daily	6.5 - 8.5		

14. Within 30 days of the end of the time limited operations period, the works approval holder must submit a report to the CEO detailing the monitoring records.
15. The works approval holder must ensure the report required by condition 14 includes the following:
- a summary of the time limited operations, including timeframes and volumes of wastewater processed and irrigated via the spray-field;
 - a summary of effluent quality results obtained during time limited operations under condition 13;
 - a summary of the environmental performance of all infrastructure as constructed or installed (as applicable), which includes records detailing the performance of the irrigation spray-field.

- (d) a review of performance and compliance against the conditions of the works approval and the Environmental Commissioning Report required under condition 7; and
- (e) where the manufacturer's design specifications and the conditions of this works approval have not been met, what measures will the works approval holder take to meet them, and what timeframes will be required to implement those measures.

Records and reporting (general)

16. The works approval holder must record the following information in relation to complaints received by the works approval holder (whether received directly from a complainant or forwarded to them by the Department or another party) about any alleged emissions from the premises:
 - (a) the name and contact details of the complainant (if provided);
 - (b) the time and date of the complaint;
 - (c) the complete details of the complaint, and any other concerns or other issues raised; and
 - (d) the complete details and dates of any action taken by the works approval holder to investigate or respond to any complaint.
17. The works approval holder must maintain accurate and auditable books including the following records, information, reports, and data required by this works approval:
 - (a) the works conducted in accordance with condition 1;
 - (b) any maintenance of infrastructure that is performed in the course of complying with condition 1;
 - (c) monitoring programmes undertaken in accordance with condition(s) 6 and 13; and
 - (d) complaints received under condition 16.
18. The books specified under condition 17 must:
 - (a) be legible;
 - (b) if amended, be amended in such a way that the original version(s) and any subsequent amendments remain legible and are capable of retrieval;
 - (c) be retained by the works approval holder for the duration of the works approval; and
 - (d) be available to be produced to an inspector or the CEO as required.

Definitions

In this works approval, the terms in Table 5 have the meanings defined.

Table 5: Definitions

Term	Definition
AS3780 2008	means the Australian Standard® The storage and handling of corrosive substances
AS/NZS 5667.10 – 1998	means the Water quality - Sampling Guidance on sampling of waste waters (Reconfirmed 2016)
books	has the same meaning given to that term under the EP Act
CEO	means Chief Executive Officer. CEO for the purposes of notification means: Director General Department administering the <i>Environmental Protection Act 1986</i> Locked Bag 10 Joondalup DC WA 6919 info@dwer.wa.gov.au
condition	a condition to which this works approval is subject under section 62 of the EP Act
Department	means the department established under section 35 of the <i>Public Sector Management Act 1994</i> and designated as responsible for the administration of Part V Division 3 of the EP Act
discharge	has the same meaning given to that term under the EP Act
emission	has the same meaning given to that term under the EP Act
environmental commissioning	means the sequence of activities to be undertaken to test equipment integrity and operation, or to determine the environmental performance, of equipment and infrastructure to establish or test a steady state operation and confirm design specifications
Environmental Commissioning Report	means a report on any commissioning activities that have taken place and a demonstration that they have concluded, with focus on emissions and discharges, waste containment, and other environmental factors
Environmental Compliance Report	means a report to satisfy the CEO that the conditioned infrastructure and/or equipment has been constructed and/or installed in accordance with the works approval
EP Act	<i>Environmental Protection Act 1986</i> (WA)

Term	Definition
EP Regulations	<i>Environmental Protection Regulations 1987 (WA)</i>
HDPE	means high density polyethylene
Landfill Definitions	means the <i>Landfill Waste Classification and Waste Definitions 1996 (as amended 2018)</i>
premises	the premises to which this works approval applies, as specified at the front of this works approval and as shown on the premises map (Figure 1) in Schedule 1 to this works approval
prescribed premises	has the same meaning given to that term under the EP Act
time limited operations	refers to the operation of the infrastructure and equipment identified under this works approval that is authorised for that purpose, subject to the relevant conditions
Rural landfill regulations	means the <i>Environmental Protection (Rural Landfill) Regulations 2002</i>
waste	has the same meaning given to that term under the EP Act
works approval	refers to this document, which evidences the grant of the works approval by the CEO under section 54 of the EP Act, subject to the conditions
works approval holder	refers to the occupier of the premises being the person to whom this works approval has been granted, as specified at the front of this works approval

END OF CONDITIONS

Schedule 1: Maps and Diagrams

Premises map

The boundary of the prescribed premises is shown in the map below (**Figure 1**).



Figure 1: Map of the boundary of the prescribed premises

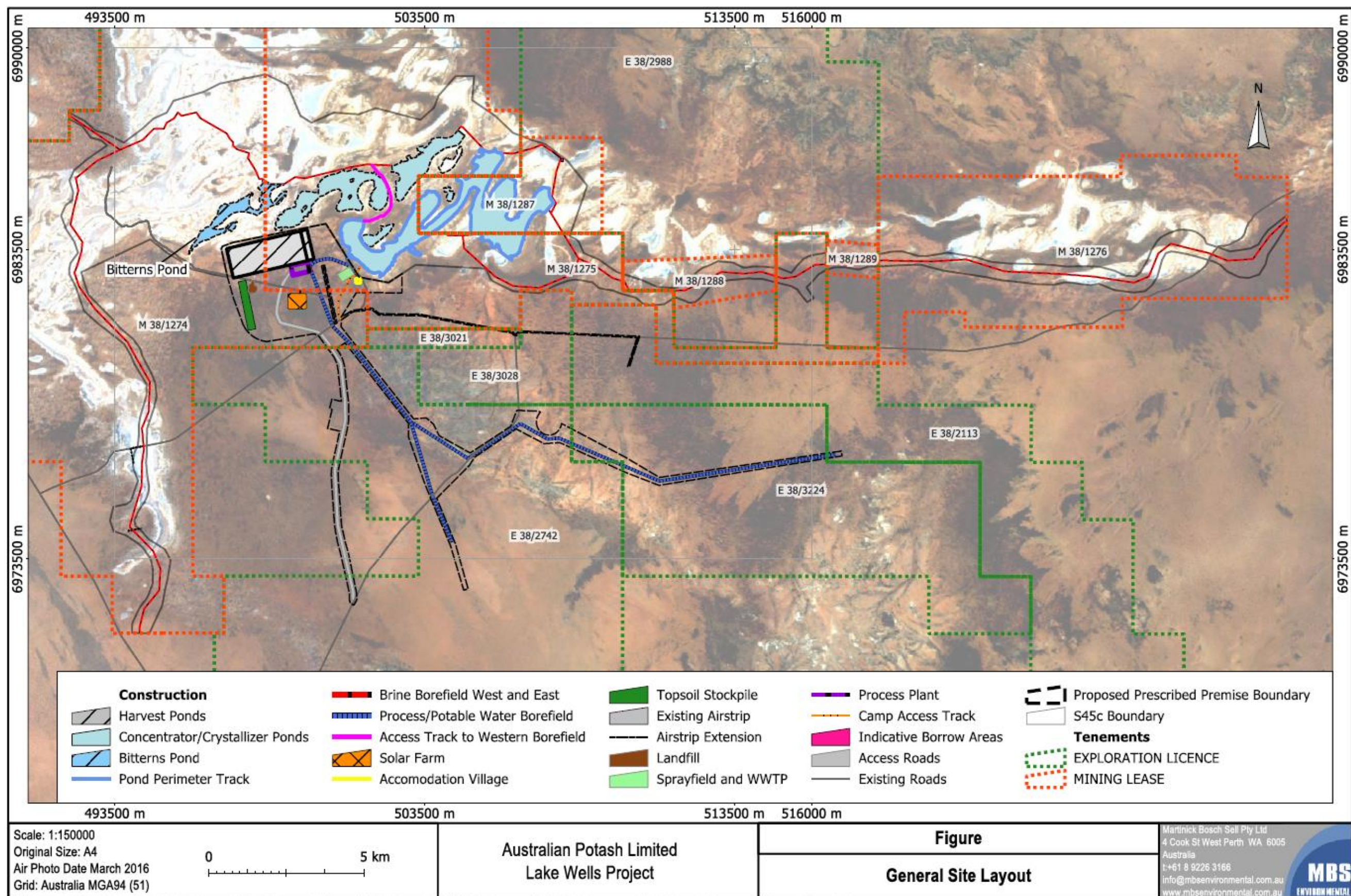
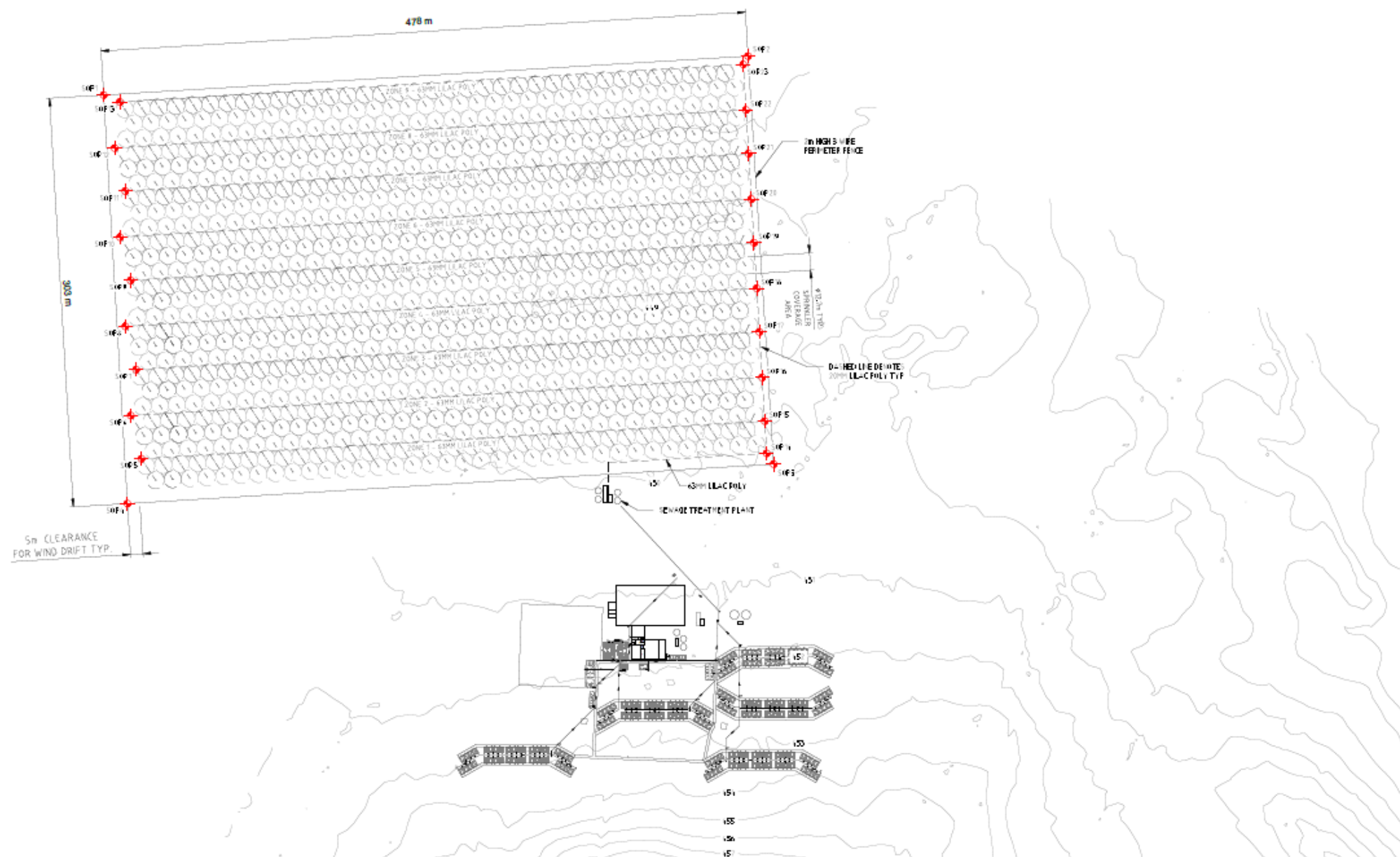


Figure 2: General site layout (context map)

Process diagrams



COORDINATES (m)		
SOP	EASTING	NORTHING
1	500672.000	6982703.000
2	501060.000	6982950.000
3	501237.000	6982692.000
4	500828.000	6982444.000
5	500821.707	6982478.136
6	500799.915	6982502.662
7	500767.521	6982534.605
8	500765.730	6982559.150
9	500753.338	6982591.075
10	500731.544	6982615.619
11	500719.154	6982647.544
12	500697.358	6982672.088
13	500664.968	6982704.013
14	501228.747	6982696.672
15	501216.394	6982717.077
16	501199.675	6982744.693
17	501182.209	6982773.546
18	501165.490	6982801.162
19	501148.023	6982830.014
20	501131.304	6982857.631
21	501113.437	6982886.483
22	501097.118	6982914.099
23	501079.652	6982942.951

Figure 3: WWTP and Spray-field layout and location

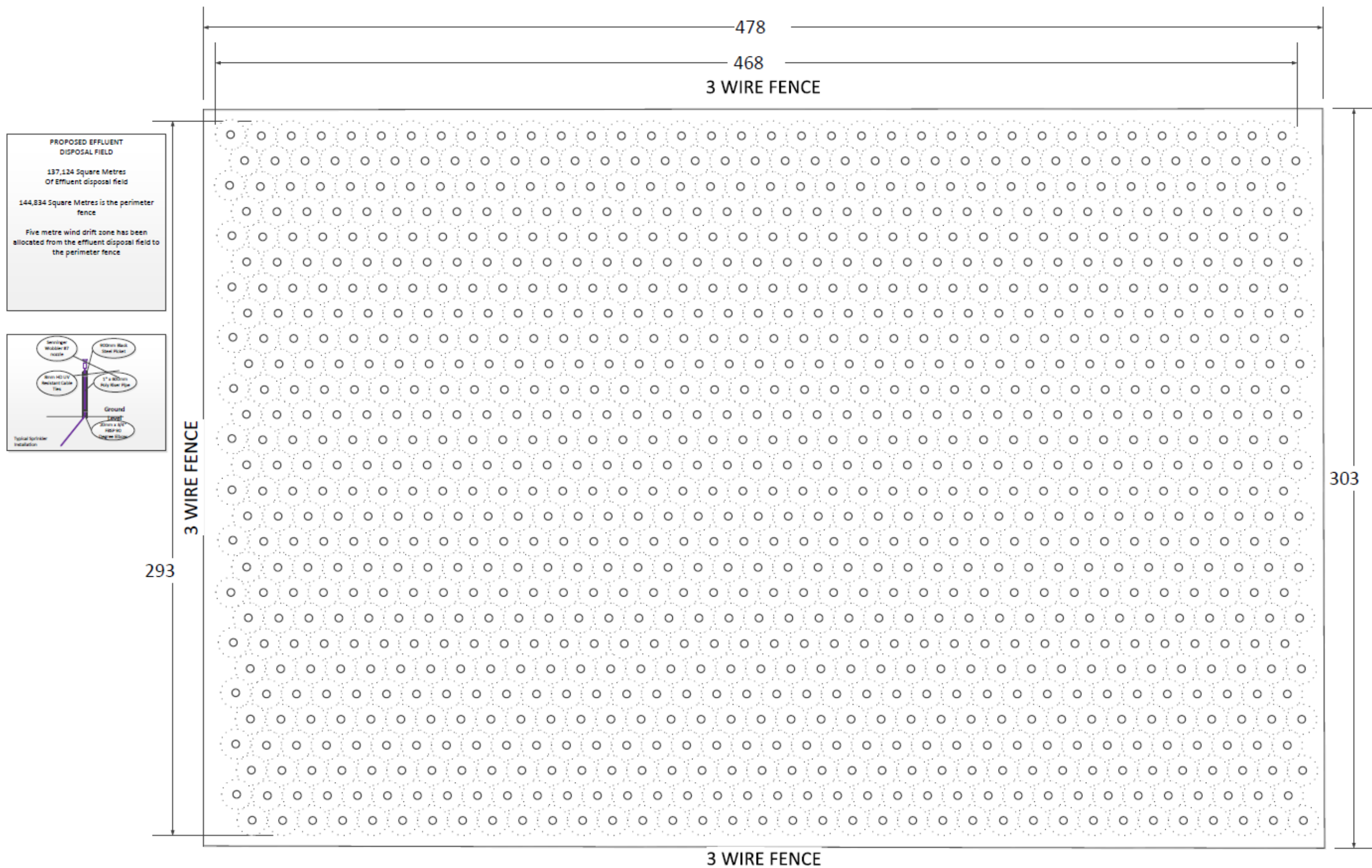


Figure 4: Irrigation spray-field dimensions

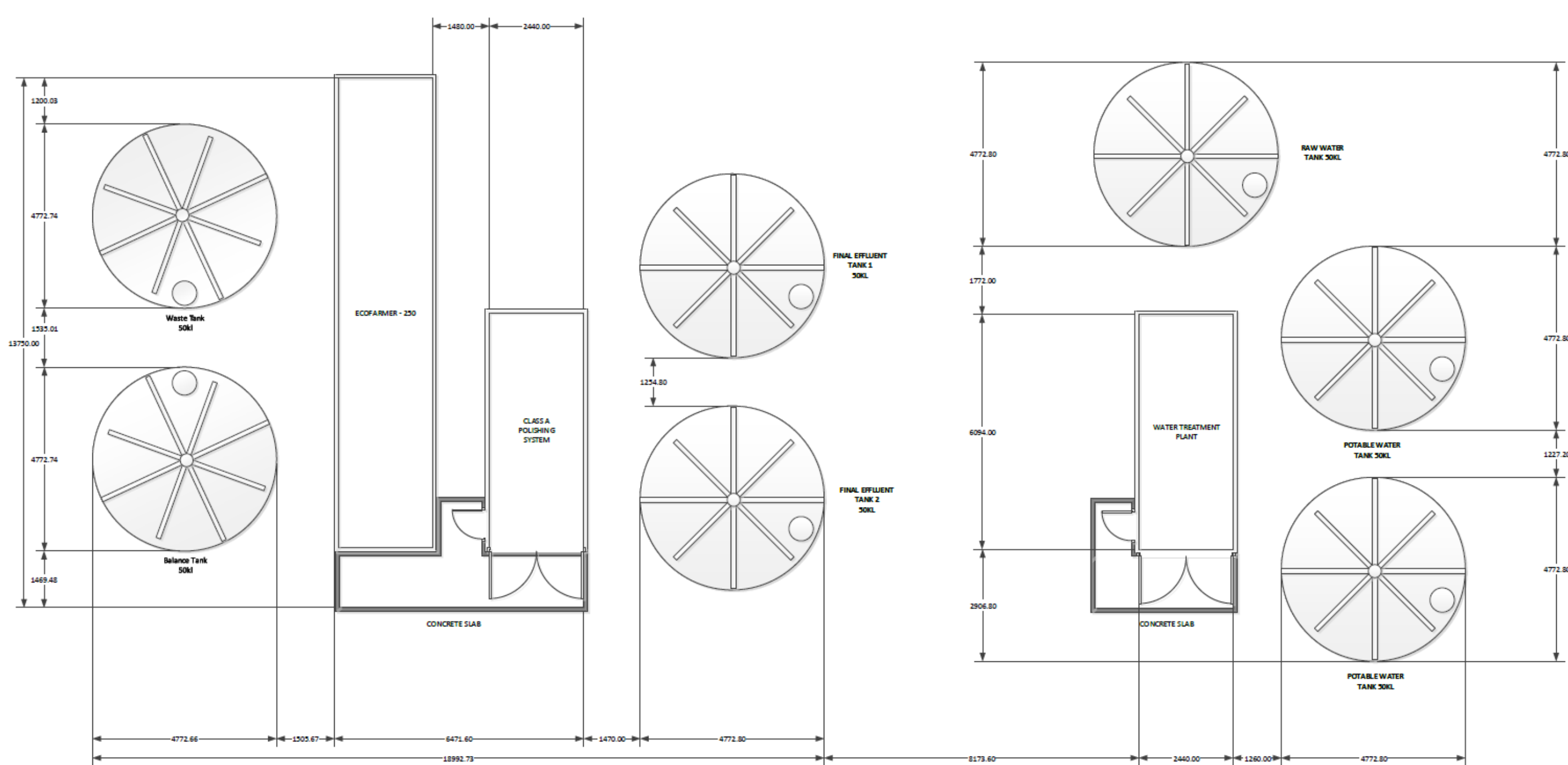


Figure 5: WWTP process diagram

Schedule 2: Premises boundary

The premises boundary is defined by the coordinates in **Table 6**.

Table 6: Premises boundary coordinates

ID	Legend	x	y	ID	Legend	x	y	ID	Legend	x	y	ID	Legend	x	y
1	Off-playa	501575.675	6982569.95	31	Off-playa	498271.099	6980546.925	61	Off-playa	497993.239	6980666.224	91	Off-playa	497720.896	6980926.805
2	Off-playa	501338.083	6982182.26	32	Off-playa	498267.079	6980548.02	62	Off-playa	497986.54	6980670.78	92	Off-playa	497719.629	6980928.57
3	Off-playa	500440.799	6982182.251	33	Off-playa	498265.453	6980548.47	63	Off-playa	497935.96	6980705.775	93	Off-playa	497710.06	6980942.382
4	Off-playa	500440.799	6982182.251	34	Off-playa	498251.808	6980552.458	64	Off-playa	497926.49	6980712.491	94	Off-playa	497709.336	6980943.469
5	Off-playa	500440.799	6982182.251	35	Off-playa	498193.023	6980570.55	65	Off-playa	497925.363	6980713.31	95	Off-playa	497707.74	6980945.871
6	Off-playa	500267.16	6982994.371	36	Off-playa	498187.002	6980572.445	66	Off-playa	497916.051	6980720.244	96	Off-playa	497696.893	6980962.935
7	Off-playa	500167.127	6982973.531	37	Off-playa	498186.28	6980572.677	67	Off-playa	497914.575	6980721.37	97	Off-playa	497695.634	6980965.008
8	Off-playa	500341.803	6982182.25	38	Off-playa	498180.283	6980574.648	68	Off-playa	497913.46	6980722.223	98	Off-playa	497689.927	6980974.642
9	Off-playa	500583.933	6981085.402	39	Off-playa	498179.326	6980574.969	69	Off-playa	497899.562	6980733.285	99	Off-playa	497685.483	6980982.502
10	Off-playa	500069.597	6980703.569	40	Off-playa	498177.699	6980575.518	70	Off-playa	497897.789	6980734.749	100	Off-playa	497655.54	6981036.598
11	Off-playa	500054.976	6980713.513	41	Off-playa	498161.274	6980581.415	71	Off-playa	497886.395	6980744.443	101	Off-playa	497646.082	6981054.534
12	Off-playa	500039.932	6980722.799	42	Off-playa	498159.124	6980582.23	72	Off-playa	497883.244	6980747.23	102	Off-playa	497645.115	6981056.462
13	Off-playa	500024.491	6980731.411	43	Off-playa	498144.926	6980587.858	73	Off-playa	497882.342	6980748.035	103	Off-playa	497643.593	6981059.522
14	Off-playa	500008.684	6980739.335	44	Off-playa	498141.078	6980589.471	74	Off-playa	497877.655	6980752.269	104	Off-playa	497637.308	6981072.751
15	Off-playa	499992.545	6980746.55	45	Off-playa	498139.008	6980590.349	75	Off-playa	497877.147	6980752.734	105	Off-playa	497636.034	6981075.537

16	Off-playa	499976.102	6980753.045	46	Off-playa	498126.234	6980595.977	76	Off-playa	497870.717	6980758.721	106	Off-playa	497632.403	6981083.67
17	Off-playa	499959.387	6980758.807	47	Off-playa	498125.007	6980596.538	77	Off-playa	497825.916	6980801.18	107	Off-playa	497631.976	6981084.65
18	Off-playa	499942.434	6980763.825	48	Off-playa	498114.626	6980601.431	78	Off-playa	497816.304	6980810.538	108	Off-playa	497628.49	6981092.846
19	Off-playa	499925.274	6980768.09	49	Off-playa	498059.294	6980628.29	79	Off-playa	497815.699	6980811.143	109	Off-playa	497324.536	6981923.228
20	Off-playa	499908.097	6980771.561	50	Off-playa	498056.494	6980629.66	80	Off-playa	497814.491	6980812.355	110	Off-playa	497326.328	6981923.196
21	Off-playa	498401.298	6980524.112	51	Off-playa	498051.269	6980632.275	81	Off-playa	497804.571	6980822.597	111	Off-playa	497124.214	6982637.408
22	Off-playa	498395.152	6980524.973	52	Off-playa	498050.31	6980632.762	82	Off-playa	497803.008	6980824.258	112	Off-playa	496930.065	6983518.488
23	Off-playa	498333.772	6980533.95	53	Off-playa	498042.357	6980636.89	83	Off-playa	497791.166	6980837.291	113	Off-playa	496967.119	6983599.281
24	Off-playa	498327.52	6980534.905	54	Off-playa	498041.091	6980637.562	84	Off-playa	497790.142	6980838.462	114	Off-playa	497306.95	6983725.38
25	Off-playa	498326.724	6980535.032	55	Off-playa	498025.413	6980646.242	85	Off-playa	497788.631	6980840.196	115	Off-playa	498350.259	6983935.738
26	Off-playa	498307.795	6980538.42	56	Off-playa	498024.335	6980646.867	86	Off-playa	497775.127	6980856.367	116	Off-playa	500306.86	6984330.24
27	Off-playa	498306.879	6980538.603	57	Off-playa	498022.347	6980648.021	87	Off-playa	497774.293	6980857.41	117	Off-playa	501306.248	6982733.548
28	Off-playa	498304.625	6980539.056	58	Off-playa	498005.61	6980658.184	88	Off-playa	497769.4	6980863.627	118	Off-playa	501389.202	6982604.758
29	Off-playa	498285.731	6980543.233	59	Off-playa	498004.05	6980659.173	89	Off-playa	497731.721	6980912.288	119	Off-playa	501575.675	6982569.95
30	Off-playa	498283.153	6980543.855	60	Off-playa	497994.661	6980665.277	90	Off-playa	497730.386	6980914.021				

Lanfilling area

The approved landfill area is defined by the coordinates set out in Table 7 (Zone 51J within M38/1274).

Table 7: Landfilling area boundary

Easting	Northing
498029.9	6982097.33
497858.45	6982096.47
497801.44	6982139.54
497822.02	6982369.68
497900.27	6982413.86
497897.7	6982496.01
498010.01	6982478.8
497992.88	6982408.98
498003.05	6982343.57
498090.92	6982290.59
498085.6	6982186.49

Spray-field area

The approved irrigation spray-field area is defined by the coordinates set out in Table 8 Table 8: Spray-field area (Zone 51J within M38/1274).

Table 8: Spray-field area

Easting	Northing
500942.66	6982809.478
501040.654	6982861.002
501120.234	6982709.648
501022.24	6982658.124
500972.165	6982813.212
500999.261	6982831.047
501030.591	6982843.933

501045.031	6982674.626
501073.605	6982689.65
501103.458	6982705.346