



Works approval number W6843/2023/1

Works approval holder Lynam Enterprises Pty Ltd
ACN 666 513 382

Registered business address 9 Bowman Street
SOUTH PERTH WA 6151

DWER file number DER2018/001042-9~85

Duration 05/12/2023 to 04/12/2026

Date of issue 05/12/2023

Premises details Glenlynn Quarry
Lot 1400 Lynam Road, Glenlyn
Legal description -
Lot 1400 on Plan 119617
As defined by the coordinates in Schedule 2.

Prescribed premises category description (Schedule 1, <i>Environmental Protection Regulations 1987</i>)	Assessed production capacity
Category 12: Screening etc. of material	81,000 tonnes per annual period

This works approval is granted to the works approval holder, subject to the attached conditions, on 5 December 2023, by:

**A/MANAGER, RESOURCE INDUSTRIES
REGULATORY SERVICES**

an officer delegated under section 20 of the *Environmental Protection Act 1986* (WA)

Interpretation

In this works approval:

- (a) the words 'including', 'includes' and 'include' in conditions mean "including but not limited to", and similar, as appropriate;
- (b) where any word or phrase is given a defined meaning, any other part of speech or other grammatical form of that word or phrase has a corresponding meaning;
- (c) where tables are used in a condition, each row in a table constitutes a separate condition;
- (d) any reference to an Australian or other standard, guideline, or code of practice in this works approval:
 - (i) if dated, refers to that particular version; and
 - (ii) if not dated, refers to the latest version and therefore may be subject to change over time.
- (e) unless specified otherwise, any reference to a section of an Act refers to that section of the EP Act; and
- (f) unless specified otherwise, all definitions are in accordance with the EP Act.

NOTE: This works approval requires specific conditions to be met but does not provide any implied authorisation for other emissions, discharges, or activities not specified in this works approval.

Works approval conditions

The works approval holder must ensure that the following conditions are complied with:

Construction phase

Infrastructure and equipment

1. The works approval holder must:
 - (a) construct and install the infrastructure and equipment;
 - (b) in accordance with the corresponding design and installation requirements; and
 - (c) at the corresponding infrastructure location,as set out in Table 1.

Table 1: Design and construction / installation requirements

	Infrastructure	Design and construction / installation requirements	Infrastructure location	Timeframe
1.	Crushing and screening plant	<ol style="list-style-type: none">1) Crushing and screening plant to consist of:<ol style="list-style-type: none">a) Striker 1320 crusher;b) Finlay screen693; andc) Striker 25 metre stacker.2) Spray bar to be installed on the crusher plant.3) Crushing and screening plant must be installed within the area labeled 'Crusher, screen, stack and truck loading' as shown in Figure 1 behind the product stockpile noise bund.	"Crusher, screen, stack and truck loading" as shown in Schedule 1 Figure 1	N/A
	Noise bund "product stockpile"	Noise bund must be constructed of earthen material to a minimum of 7 metres in height.	"Product stockpile" as shown in Schedule 1 Figure 1	To be established prior to the commencement of time-limited operations.

Compliance reporting

2. The works approval holder must within 30 calendar days of an item of infrastructure or equipment required by condition 1 being constructed and/or installed:
 - (a) undertake an audit of their compliance with the requirements of condition 1; and
 - (b) prepare and submit to the CEO an Environmental Compliance Report on that compliance.
3. The Environmental Compliance Report required by condition 2, must include as a minimum the following:

- (a) certification by a suitably qualified and experienced Engineer that the items of infrastructure or component(s) thereof, as specified in condition 1, have been constructed in accordance with the relevant requirements specified in condition 1;
- (b) as constructed plans or photographs and a detailed site plan for each item of infrastructure or component of infrastructure specified in condition 1; and
- (c) be signed by a person authorised to represent the works approval holder and contains the printed name and position of that person.

Time limited operations phase

Commencement and duration

- 4. The works approval holder may only commence time limited operations for an item of infrastructure specified in condition 6 where the Environmental Compliance Report as required by condition 2 has been submitted by the works approval holder for that item of infrastructure.
- 5. The works approval holder may conduct time limited operations for an item of infrastructure specified in condition 6:
 - (a) for a period not exceeding 180 calendar days from the day the works approval holder meets the requirements of condition 4 for that item of infrastructure; or
 - (b) until such time as a licence for that item of infrastructure is granted in accordance with Part V of the *Environmental Protection Act 1986*, if one is granted before the end of the period specified in condition 5(a).

Time limited operations requirements

- 6. During time limited operations, the works approval holder must ensure that the premises infrastructure listed in Table 2 and located at the corresponding infrastructure location is maintained and operated in accordance with the corresponding operational requirement set out in Table 2.

Table 2: Infrastructure requirements

	Infrastructure	Operating requirements	Infrastructure location
1.	Crushing and screening plant.	1) Crushing and screening plant to be operated behind product stockpile noise bund at all times. 2) Product stockpile noise bund to be maintained at a minimum 7 meters in height. 3) Water cart to be used to manage dust lift-off from stockpiles. 4) Spray bar to be operated during crushing. 5) Volume of material processed through the plant to be recorded.	"Crusher, screen, stack and truck loading" as shown in Schedule 1 Figure 1 "Product stockpile" as shown in Schedule 1 Figure 1.

- 7. The works approval holder must ensure that operation of the crushing and screening plant at the premises only occurs between the hours of 07:30 to 17:30, on the days of Monday through to Saturday.

8. The works approval holder must ensure that uncontaminated stormwater is kept separate from contaminated or potentially contaminated stormwater. Where stormwater has come into contact with a possible source of contamination, it should be treated as contaminated and retained on the premises.
9. Within 30 days of commencement of time limited operations, the works approval Holder must retain the services of a person qualified and experienced in the area of environmental noise assessment and who by their qualifications and experience is eligible to hold membership of the Australian Acoustical Society or the Australian Association of Acoustical Consultants to:
 - (a) investigate the nature and extent of noise emissions from crushing and screening operations at the premises including undertaking noise monitoring during normal operations at the boundary of the closest noise sensitive receptor;
 - (b) assess in accordance with the methodology required in the *Environmental Protection (Noise) Regulations 1997*, the compliance of the noise emissions from the primary activities, against the relevant assigned levels specified in those Regulations; and
 - (c) compile and submit to the works approval holder within three months of the amendment date of this works approval, a report in accordance with condition 10.
10. A report prepared pursuant to condition 9(c) is to include:
 - (a) a description of the methods used for monitoring of noise emissions from the premises;
 - (b) details and the results of the investigation undertaken pursuant to condition 9(a);
 - (c) details and results of the assessment of the noise emissions from normal operations at the premises against the relevant assigned levels in the *Environmental Protection (Noise) Regulations 1997* undertaken pursuant to condition 9(b); and
 - (d) an assessment of noise levels against the most recent previous noise modelling assessment.
11. The works approval holder must submit to the CEO the report prepared, pursuant to condition 9(c) within 7 days of receiving it.
12. Where an assessment pursuant to condition 10 indicates that noise emissions do not comply with the relevant assigned levels in the *Environmental Protection (Noise) Regulations 1997*, the works approval holder must:
 - (a) cease operations of the mobile crushing and screening plant specified in condition 6;
 - (b) within 14 days of receiving an assessment report pursuant to condition 10(c), prepare a plan to ensure operations of the mobile crushing and screening plant specified in condition 6 will no longer lead to any contravention of the *Environmental Protection (Noise) Regulations 1997*; and
 - (c) provide to the CEO a copy of the plan prepared pursuant to condition 12(b) within 30 days of its completion.

13. A report prepared pursuant to condition 12(b) is to include timeframes for the completion of additional noise mitigation measures.
14. The works approval holder may recommence operations of the mobile crushing and screening plant specified in condition 6 upon implementation of all noise mitigation measures identified in accordance with condition 12(b).
15. Where operations are recommenced in accordance with condition 14, the works approval holder must notify the CEO in writing a minimum of 48 hours prior to recommencing operations.

Time limited operations compliance reporting

16. The works approval holder must submit to the CEO a report on the time limited operations within 30 calendar days of the completion date of time limited operations or 30 calendar days before the expiration date of the works approval, whichever is the sooner.
17. The works approval holder must ensure the report required by condition 16 includes the following:
 - (a) a summary of the time limited operations, including any relevant timeframes and amount of material processed;
 - (b) a review of performance and compliance against the conditions of the works approval; and
 - (c) where the manufacturer's design specifications and the conditions of this works approval have not been met, what measures will the works approval holder take to meet them, and what timeframes will be required to implement those measures.

Records and reporting (general)

18. The works approval holder must record the following information in relation to complaints received by the works approval holder (whether received directly from a complainant or forwarded to them by the Department or another party) about any alleged emissions from the premises:
 - (a) the name and contact details of the complainant, (if provided);
 - (b) the time and date of the complaint;
 - (c) the complete details of the complaint and any other concerns or other issues raised; and
 - (d) the complete details and dates of any action taken by the works approval holder to investigate or respond to any complaint.
19. The works approval holder must maintain accurate and auditable books including the following records, information, reports, and data required by this works approval:
 - (a) the works conducted in accordance with condition 1;
 - (b) any maintenance of infrastructure that is performed in the course of complying with condition 6;
 - (c) complaints received under condition 18.

- 20.** The books specified under condition 19 must:
- (a) be legible;
 - (b) if amended, be amended in such a way that the original version(s) and any subsequent amendments remain legible and are capable of retrieval;
 - (c) be retained by the works approval holder for the duration of the works approval;
and
 - (d) be available to be produced to an inspector or the CEO as required.

Definitions

In this works approval, the terms in Table have the meanings defined.

Table 3: Definitions

Term	Definition
annual period	a 12 month period commencing from 1 July until 30 June of the immediately following year.
books	has the same meaning given to that term under the EP Act.
CEO	means Chief Executive Officer. CEO for the purposes of notification means: Director General Department administering the <i>Environmental Protection Act 1986</i> Locked Bag 10 Joondalup DC WA 6919 info@dwer.wa.gov.au
Department	means the department established under section 35 of the <i>Public Sector Management Act 1994</i> and designated as responsible for the administration of Part V Division 3 of the EP Act.
discharge	has the same meaning given to that term under the EP Act.
emission	has the same meaning given to that term under the EP Act.
Environmental Compliance Report	means a report to satisfy the CEO that the conditioned infrastructure and/or equipment has been constructed and/or installed in accordance with the works approval.
EP Act	<i>Environmental Protection Act 1986</i> (WA).
EP Regulations	<i>Environmental Protection Regulations 1987</i> (WA).
premises	the premises to which this licence applies, as specified at the front of this licence and as shown on the premises map (Figure 1) in Schedule 1 to this works approval.
prescribed premises	has the same meaning given to that term under the EP Act.
time limited operations	refers to the operation of the infrastructure and equipment identified under this works approval that is authorised for that purpose, subject to the relevant conditions.
works approval	refers to this document, which evidences the grant of the works approval by the CEO under section 54 of the EP Act, subject to the conditions.
works approval holder	refers to the occupier of the premises being the person to whom this works approval has been granted, as specified at the front of this works approval.

END OF CONDITIONS

Schedule 1: Maps

Premises map

The boundary of the prescribed premises is shown in blue in the map below (Figure 1).

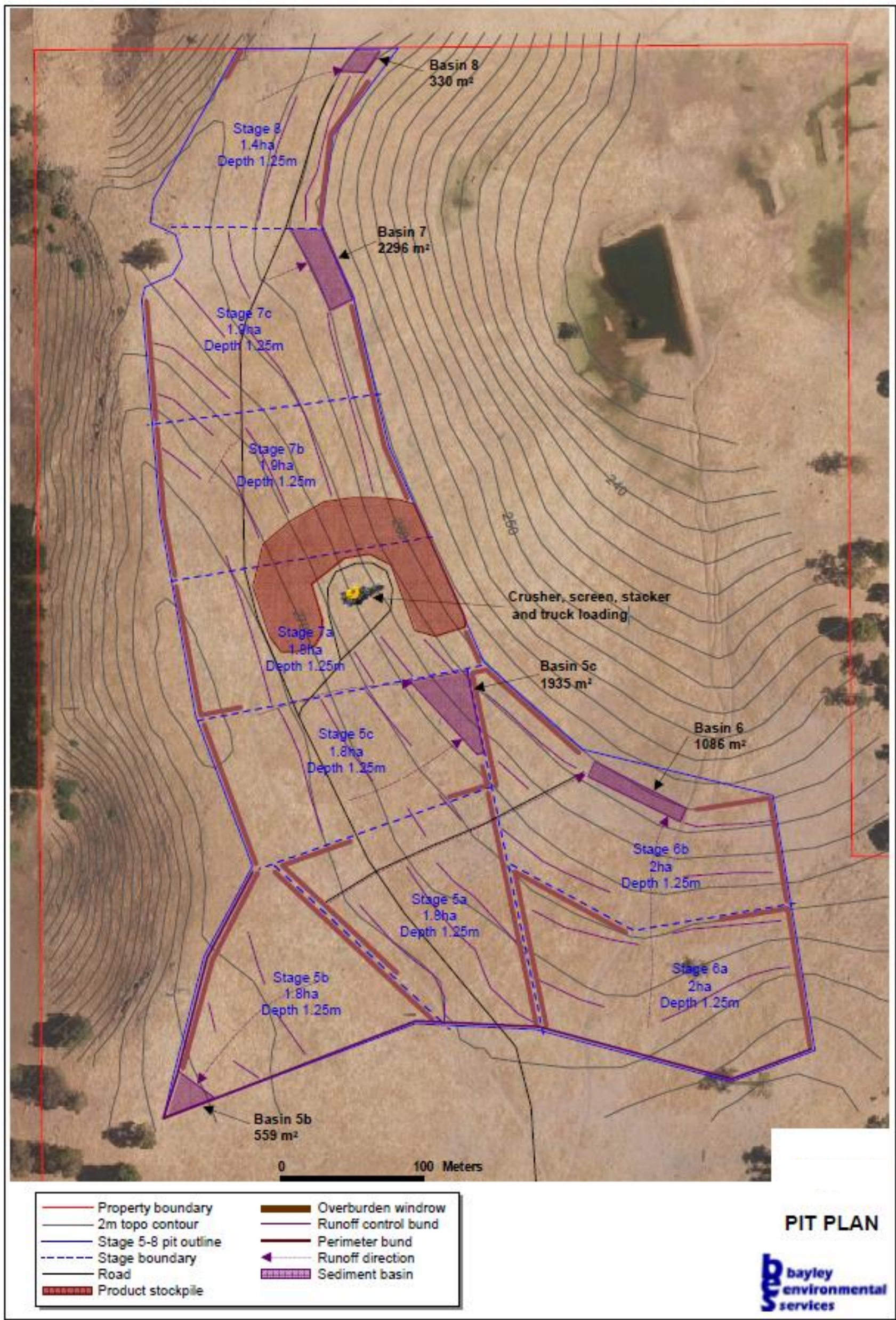


Figure 1: Map of the boundary of the prescribed premises

Schedule 2: Premises boundary

The premises boundary is defined by the coordinates in Table .

Table 4: Premises boundary coordinates

Point	Latitude	Longitude
1	-33.998662	116.142550
2	-33.999218	116.142046
3	-33.999804	116.141954
4	-34.000238	116.142188
5	-34.001196	116.142449
6	-34.002572	116.143160
7	-34.003136	116.143913
8	-34.003435	116.145361
9	-34.005060	116.145669
10	-34.005254	116.145029
11	-34.004910	116.143538
12	-34.004868	116.142618
13	-34.005458	116.140684
14	-34.004432	116.141009
15	-34.003858	116.141383
16	-34.002899	116.140959
17	-34.001635	116.140701
18	-34.000254	116.140574
19	-34.000173	116.140597
20	-34.000093	116.140803
21	-33.999986	116.140891
22	-33.999841	116.140838
23	-33.999767	116.140644
24	-33.999614	116.140667
25	-33.998663	116.141327