



Licence number	L6929/1990/16
Licence holder	Cockatoo Island Mining Pty Ltd
ACN	628 239 065
Registered business address	PRAGMA, 'Pragma' L 1 282 Rokeby Road SUBIACO WA 6008
DWER file number	DER2023/000633
Duration	20/03/2016 to 19/03/2027
Date of issue	17/03/2016
Date of amendment	1/05/2024
Premises details	Cockatoo Island Iron Ore Mine and Processing Facility Legal description - Mining Tenements M04/448, L04/49, G04/33, G04/34, G04/35, G04/36 and G04/37 COCKATOO ISLAND WA 6713

Prescribed premises category description (Schedule 1, <i>Environmental Protection Regulations 1987</i>)	Assessed production / design capacity
Category 5: Processing or beneficiation of metallic or non-metallic ore: premises on which (a) metallic or non-metallic ore is crushed, ground, milled or otherwise processed; (b) tailings from metallic or non-metallic ore are reprocessed; or tailings or residue from metallic or non-metallic ore are discharged into a containment cell or dam	2,628,000 tonnes per annual period
Category 6: Mine dewatering: premises on which water is extracted and discharged into the environment to allow mining of ore.	38,000,000 tonnes per annual period
Category 58: Bulk material loading or unloading: premises on which clinker, coal, ore, ore concentrate or any other bulk granular material (other than salt) is loaded onto or unloaded from vessels by an open materials loading system.	43,200 tonnes per day

This licence is granted to the licence holder, subject to the attached conditions, on 1 May 2024, by:

Timothy Moran

A/Manager – Resource Industries

an officer delegated under section 20 of the *Environmental Protection Act 1986* (WA)

Licence history

Date	Reference number	Summary of changes
11/10/2012	L6929/1990/14	Licence transfer to Pluto Resources Limited
14/03/2013	L6929/1990/14	Licence re-issue
05/03/2015	L6929/1990/15	Licence amendment and conversion to REFIRE format
10/03/2016	L6929/1990/16	Licence re-issue
19/08/2018	L6929/1990/16	Amendment Notice 1 Licence amendment to remove Category 64 (Class II putrescible landfill) and Category 85 (Sewage facility)
21/05/2021	L6929/1990/16	Licence transfer to Cockatoo Island Mining Pty Ltd. Amendment Notice 1 has been amalgamated into licence document.
01/05/2024	L6929/1990/16	Licence amendment to add an open-material loading system (radial telescopic conveyor) and upgraded barge wharf for the purpose of trans-shipment of direct shipping ore from the premises to an ocean going vessel.

Interpretation

In this licence:

- (a) the words ‘including’, ‘includes’ and ‘include’ in conditions mean “including but not limited to”, and similar, as appropriate;
- (b) where any word or phrase is given a defined meaning, any other part of speech or other grammatical form of that word or phrase has a corresponding meaning;
- (c) where tables are used in a condition, each row in a table constitutes a separate condition;
- (d) any reference to an Australian or other standard, guideline, or code of practice in this licence:
 - (i) if dated, refers to that particular version; and
 - (ii) if not dated, refers to the latest version and therefore may be subject to change over time;
- (e) unless specified otherwise, any reference to a section of an Act refers to that section of the EP Act; and
- (f) unless specified otherwise, all definitions are in accordance with the EP Act.

NOTE: This licence requires specific conditions to be met but does not provide any implied authorisation for other emissions, discharges, or activities not specified in this licence.

Licence conditions

The licence holder must ensure that the following conditions are complied with:

Infrastructure and equipment

1. The works approval holder must:
 - (a) construct and/or install the infrastructure and/or equipment;
 - (b) in accordance with the corresponding design and construction / installation requirements; and
 - (c) at the corresponding infrastructure location, as set out in Table 1.

Table 1 Design and construction / installation requirements

Infrastructure	Design and construction / installation requirements	Infrastructure location
Radial telescopic conveyor (telestacker)	<ul style="list-style-type: none"> Gravity-fed sprinkler system to wet product to be installed prior to commissioning Installation of a programmable logic controller on conveyors and feed bin to prevent overloading of conveyors; Emergency stops fitted at operator control point. Installed in accordance with manufactures specifications (per Figure 4). Installed such that when fully extended, the telestacker is incapable of loading materials over the seaward side of the dumb barges (per Figure 5) 	Within the premises boundary as depicted in Schedule 1
Barge Wharf upgrades	<ul style="list-style-type: none"> Construction of the wharf must not cause disturbance to the seabed Pile installation must not occur beneath the ocean waterline. Pile installation must only occur during day-shift. Water cart(s) must be available and operational to effectively wet down dust generating areas during construction and vehicle movements within the premises. 	Within the “Barge Area Layout” areas as depicted in Schedule 1

2. The licence holder must within 30 calendar days of an item of infrastructure or equipment required by condition 1 being constructed and/or installed:

- (a) undertake an audit of their compliance with the requirements of condition 1; and
 - (b) prepare and submit to the CEO an Environmental Compliance Report on that compliance.
3. The Environmental Compliance Report required by condition 2, must include as a minimum the following:
 - (a) certification by a suitably qualified engineer that the items of infrastructure or component(s) thereof, as specified in condition 1, have been constructed in accordance with the relevant requirements specified in condition 1;
 - (b) as constructed plans and a detailed site plan for each item of infrastructure or component of infrastructure specified in condition 1; and
 - (c) be signed by a person authorised to represent the works approval holder and contains the printed name and position of that person.
4. The licence holder may only commence operation of an item of infrastructure identified in condition 1 where the Environmental Compliance Report as required by condition 2 has been submitted by the licence holder for that item of infrastructure.
5. The licence holder must ensure that the site infrastructure and equipment listed in Table 2 and located at the corresponding infrastructure location is maintained and operated in accordance with the corresponding operational requirement set out in Table 2.

Table 2: Infrastructure and equipment operational requirements

Site infrastructure and equipment	Operational requirement	Infrastructure location
Telesacker	<ul style="list-style-type: none"> Conveyor and loading arm functioning as specified by the manufacturer. Telesacker must be fully retracted and in the cradle position when dumb barges are arriving and disembarking the barge loading facility. Maintain dust suppression system (sprayers) to be operational on ore bins to ensure direct shipping ore (DSO) is moist prior to loading onto conveyors. Program logic controller is fully functional. 	Within the premises boundary as depicted in Schedule 1
Barge Wharf	<ul style="list-style-type: none"> Visual inspection of the wharf to ensure no spill (or that spill is prevented) of DSO from loading operations 	

6. The licence holder must ensure that dewater effluent and process water are only discharged to the containment infrastructure specified in Table 3.

Table 3: Containment infrastructure requirements and location

Containment cell or dam number(s)	Contained material	Infrastructure requirements	Infrastructure location
Dewatering	Dewater from	The Licence Holder must ensure:	Schedule 1,

Containment cell or dam number(s)	Contained material	Infrastructure requirements	Infrastructure location
Settlement Pond (s1)	dewater operations	<ul style="list-style-type: none"> Dewater is directed to the Settlement Pond for treatment prior to disposal via the Dewatering Discharge Outlet; and A minimum top of embankment freeboard of 1 m is maintained. 	
Lined evaporation pond (A1)	Treated water from the oil water separator	<p>The Licence Holder shall manage the lined evaporation pond so that:</p> <ul style="list-style-type: none"> All wash down and maintenance workshop wastewater is diverted to an oil water separator prior to discharge to the pond; overtopping of the pond does not occur; A freeboard equal to, or greater than, 300 millimetres (mm) is maintained; Stormwater runoff is prevented from entering the pond; and There is no discernible seepage loss from the pond. 	Schedule 1,
Note 1: Containment point reference as shown in the Map of premises operation and emission locations in Schedule 1.			

7. The Licence Holder must:

- undertake inspections as detailed in Table 4;
- where any inspection identifies that an appropriate level of environmental protection is not being maintained, take corrective action to mitigate adverse environmental consequences as soon as practicable; and
- maintain a record of all inspections undertaken.

Table 4: Containment infrastructure requirements and location

Scope of inspection	Inspection requirement	Frequency of inspection
Mine dewater pipelines	Visual integrity	Weekly
Above ground hydrocarbon storage facilities	Visual integrity	

Waste Management

- The Licence Holder must immediately recover or remove and dispose of spills of environmentally hazardous materials outside an engineered containment system.
- The Licence Holder must ensure spillage of ore or concentrate during loading operations is collected and recovered so that this material does not enter the marine environment.

Emissions

- The Licence Holder must install and maintain mechanisms to ensure that stormwater from the following areas is diverted to facilities for treatment and

disposal or reuse:

- (a) Ore Handling Plant;
- (b) Washdown bays;
- (c) Refuelling areas; and
- (d) Mechanical workshops.

11. The Licence Holder must ensure that where waste is emitted to surface water from the emission points in Table 5 and identified on the map of emission points in Schedule 1, it is done so in accordance with the conditions of this licence.

Table 5: Emissions to surface water

Emission point reference ¹	Description	Source including abatement
E2	Dewatering Discharge Outlet	Dewater from the settlement pond
W1	Dewatering Discharge Point (Contingency Dewatering Only)	Mine pit dewater

Note 1: Emission point reference as shown in the Map of premises operation and emission locations in Schedule 1.

12. The Licence Holder must only conduct contingency discharge of dewatering effluent in the event that reuse, in pit disposal and temporary storage are not available, or have been exhausted.
13. The Licence Holder must not cause or allow point source emissions to surface water greater than the limits listed in Table 6.

Table 6: Point source emission limits to surface water

Emission point reference ¹	Parameter	Limit (including units)	Averaging period
E2	Total Recoverable Hydrocarbon (TRH)	5 mg/L	Spot sample

Note 1: Emission point reference as shown in the Map of premises operation and emission locations in Schedule 1.

14. The Licence Holder must record and investigate any exceedance of the criteria in Table 6.

Monitoring

15. The licence holder must ensure that:
- (a) all water samples are collected and preserved in accordance with AS/NZS 5667.1;
 - (b) all groundwater sampling is conducted in accordance with AS/NZS 5667.11;
 - (c) all laboratory samples are submitted to and tested by a laboratory with current NATA accreditation for the parameters being measures; and
 - (d) laboratory sample must be analysed using the appropriate limit of reporting as to allow comparison with relevant environmental guidelines.
16. The licence holder must ensure that monitoring is undertaken in each monthly period such that there are at least 15 days in between the days on which samples are taken in successive months;
17. The Licence Holder must ensure that all monitoring equipment used on the Premises to comply with the conditions of this Licence is calibrated in accordance with the manufacturer's specifications.

18. The Licence Holder must, where the requirements for calibration cannot be practicably met, or a discrepancy exists in the interpretation of the requirements, bring these issues to the attention of the CEO accompanied with a report comprising details of any modifications to the methods.
19. The Licence Holder shall operate and maintain all pollution control and monitoring equipment to the manufacturer's specification or any relevant and effective internal management system.

Monitoring of point source emissions to surface water

20. The Licence Holder must undertake the monitoring in Table 7 according to the specifications in that table.

Table 7: Monitoring of point source emissions to surface water

Emission point reference ¹	Parameter	Units	Frequency
E2	Total Suspended Solids	mg/L	Fortnightly while discharging to the ocean
	TRH		
	Electrical conductivity	µS/cm	
	Turbidity	Nephelometric Turbidity Units (NTU)	
	Orthophosphates	µmol/L	
	Nitrates/nitrites	mg/L	
	Al, As, Sb, Cd, Cr, Cu, Fe, Pb, Ni, Zn (filtered and total)	mg/L	
W1	Total Suspended Solids	mg/L	Within 24 hours of discharging and thereafter as safety allows

Note 1: Emission point reference as shown in the Map of premises operation and emission locations in Schedule 1.

Monitoring of inputs and outputs

21. The Licence Holder must undertake the monitoring in Table 8 according to the specifications in that table.

Table 8: Monitoring of inputs and outputs

Input/output	Monitoring point reference ¹	Parameter	Units	Averaging period	Frequency
Dewater directed to the Settlement Pond	F1 - Flow meter devices on in-coming pipeline	Volumetric flow rate (cumulative)	m ³ /day	Monthly	Continuous
Dewater directed to the Settlement Pond	F2 - Flow meter devices on in-coming pipeline	Volumetric flow rate (cumulative)	m ³ /day	Monthly	Continuous
Dewater directed to the Settlement Pond	F3 - Flow meter devices on in-coming pipeline	Volumetric flow rate (cumulative)	m ³ /day	Monthly	Continuous

Dewater directed to the Settlement Pond	F4 - Flow meter devices on in-coming pipeline	Volumetric flow rate (cumulative)	m ³ /day	Monthly	Continuous
---	---	-----------------------------------	---------------------	---------	------------

Note 1: Monitoring point reference as shown in the Map of premises operation and emission locations in Schedule 1.

Records and reporting

- 22.** The licence holder must record the following information in relation to complaints received by the licence holder (whether received directly from a complainant or forwarded to them by the Department or another party) about any alleged emissions from the premises:
- (a) the name and contact details of the complainant, (if provided);
 - (b) the time and date of the complaint;
 - (c) the complete details of the complaint and any other concerns or other issues raised; and
 - (d) the complete details and dates of any action taken by the licence holder to investigate or respond to any complaint.
- 23.** The licence holder must:
- (a) undertake an audit of their compliance with the conditions of this licence during the preceding annual period; and
 - (b) prepare and submit to the CEO by no later than 90 days after the end of that annual period an Annual Audit Compliance Report in the approved form.
- 24.** The licence holder must maintain accurate and auditable books including the following records, information, reports, and data required by this works approval:
- (a) the works conducted in accordance with condition 1;
 - (b) any maintenance of infrastructure that is performed in the course of complying with conditions 5 and 10;
 - (c) monitoring programmes undertaken in accordance with conditions 20 and 21; and
 - (d) complaints received under condition 22.
- 25.** The books specified under condition 24 must:
- (a) be legible;
 - (b) if amended, be amended in such a way that the original version(s) and any subsequent amendments remain legible and are capable of retrieval;
 - (c) except for records listed in 24(d) be retained for at least 6 years from the date the records were made or until the expiry of the Licence or any subsequent licence;
 - (d) for those following records, be retained until the expiry of the Licence and any subsequent licence:
 - (i) off-site environmental effects; or
 - (ii) matters which affect the condition of the land or waters, and
 - (e) be available to be produced to an inspector or the CEO as required.
- 26.** The licence holder must submit to the CEO by no later than 60 days after the end of each annual period, an Annual Environmental Report for that annual period for the

conditions listed in Table 9, and which provides information in accordance with the corresponding requirement set out in Table 9.

Table 9: Annual Environmental Report

Condition or table	Parameter	Format or form ¹
-	Summary of any failure or malfunction of any pollution control equipment and any environmental incidents that have occurred during the annual period and action taken	None specified
-	Actual throughput for the annual period for Categories 5, 6 and 58	
Table 6	Limit exceedance	
Table 7-	E2: TRH and Total Suspended Solids	WR1
Table 7	W1: Total Suspended Solids	WR1
Table 8	F1 – F4: cumulative volumes	WR1
Condition 22	Complaints summary	None specified
Condition 23	Compliance	Annual Audit Compliance Report (AACR)

Note 1: Forms are in Schedule 2

27. The licence holder must ensure that the Annual Environmental Report also contains:
- (a) any relevant process, production or operational data; and
 - (b) an assessment of the information contained within the report against previous monitoring results and licence limits.
28. The licence holder must submit the information in Table 10 to the CEO according to the specifications in that table.

Table 10: Non-annual reporting requirements

Condition or table (if relevant)	Parameter	Reporting period	Reporting date (after end of the reporting period)	Format or form
-	Copies of original monitoring reports submitted to the Licence Holder by third parties	Not Applicable	Within 14 days of the CEOs request	As received by the Licence Holder from third parties

Note 1: Forms are in Schedule 2

29. The licence holder must ensure that the parameters listed in Table 11 are notified to the CEO, in accordance with the notification requirements of the table.

Table 11: Notification requirements

Condition or table	Parameter	Notification requirement ¹	Format or form ²
Table 6	Breach of any limit specified in the Licence	Part A: As soon as practicable but no later than 5pm of the next usual working day.	N1

Condition 11 and 12	Contingency dewatering discharge	Within 24 hours of activation of a contingency dewatering discharge activity	CD1
Condition 11 and 12	Contingency dewatering discharge	Within 7 days of cessation of a contingency dewatering discharge activity	CD1
Condition 18	Calibration report	As soon as practicable	None specified
-	Recommencing start-up of operations (after a period of care and maintenance)	At least 90 days prior to recommencing production	None specified

Note 1: Notification requirements in the Licence shall not negate the requirement to comply with s72 of the Act

Note 2: Forms are in Schedule 2

Definitions

In this licence, the terms in Table 12 have the meanings defined.

Table 12: Definitions

Term	Definition
ACN	Australian Company Number
Annual Audit Compliance Report (AACR)	means a report submitted in a format approved by the CEO (relevant guidelines and templates may be available on the Department's website).
annual period	a 12 month period commencing from 1 January until 31 December of the same year.
books	has the same meaning given to that term under the EP Act.
CEO	means Chief Executive Officer of the Department. "submit to / notify the CEO" (or similar), means either: Director General Department administering the <i>Environmental Protection Act 1986</i> Locked Bag 10 Joondalup DC WA 6919 or: info@dwer.wa.gov.au
Department	means the department established under section 35 of the <i>Public Sector Management Act 1994</i> (WA) and designated as responsible for the administration of the EP Act, which includes Part V Division 3.
discharge	has the same meaning given to that term under the EP Act.
emission	has the same meaning given to that term under the EP Act.
EP Act	<i>Environmental Protection Act 1986</i> (WA)
EP Regulations	<i>Environmental Protection Regulations 1987</i> (WA)
licence	refers to this document, which evidences the grant of a licence by the CEO under section 57 of the EP Act, subject to the specified conditions contained within.
licence holder	refers to the occupier of the premises, being the person specified on the front of the licence as the person to whom this licence has been granted.
monthly period	means that there are at least 15 days in between the days on which samples are taken in successive months;
premises	refers to the premises to which this licence applies, as specified at the front of this licence and as shown on the premises map (Figure 1) in

Term	Definition
	Schedule 1 to this licence.
prescribed premises	has the same meaning given to that term under the EP Act.
Suitably qualified engineer	means a person who: (a) holds a relevant tertiary academic qualification; and (b) has a minimum of at least three years of experience working in the area / field of engineering.
waste	has the same meaning given to that term under the EP Act.

END OF CONDITIONS

Schedule 1: Maps

Premises map

The boundary of the prescribed premises is shown in the map below (Figure 1).

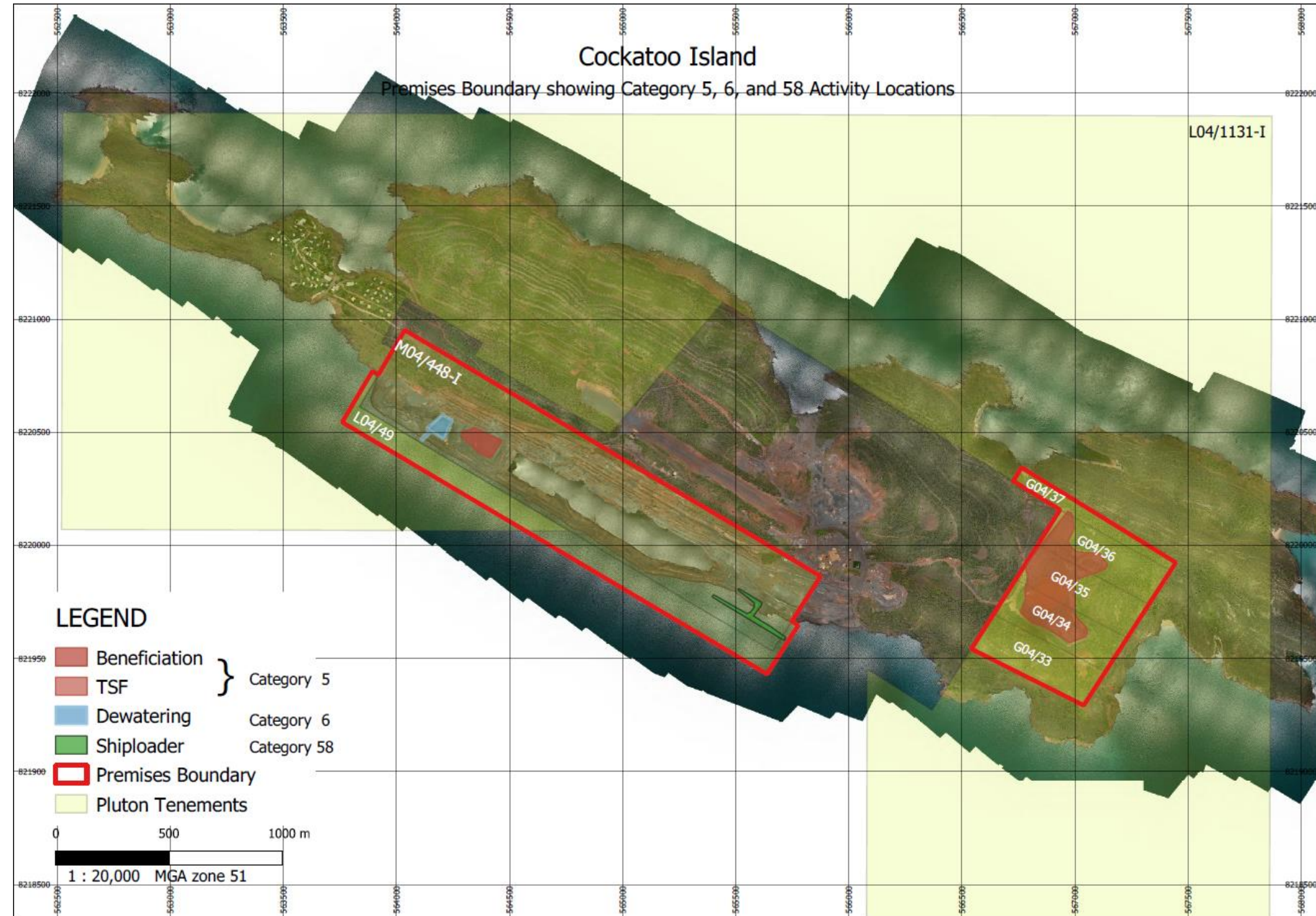


Figure 1: Map of the boundary of the prescribed premises

Map of premises operation and emission locations

The location of the premises operation points defined in Table 3 and Table 4, emission points E1, E2 and W1 defined in Table 5, and emission points F1 - F4 defined in Table 8, is shown below.

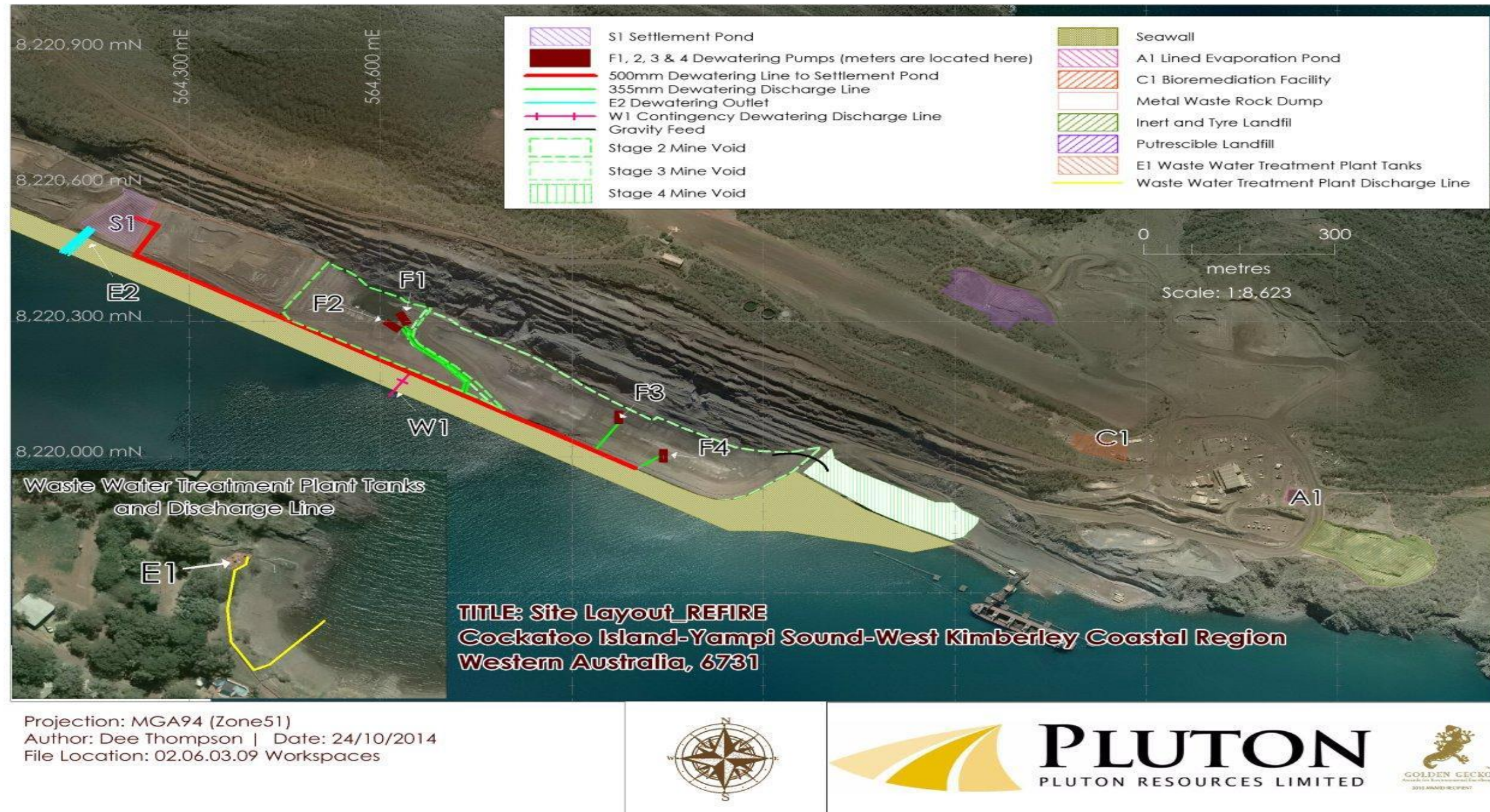


Figure 2: Site layout

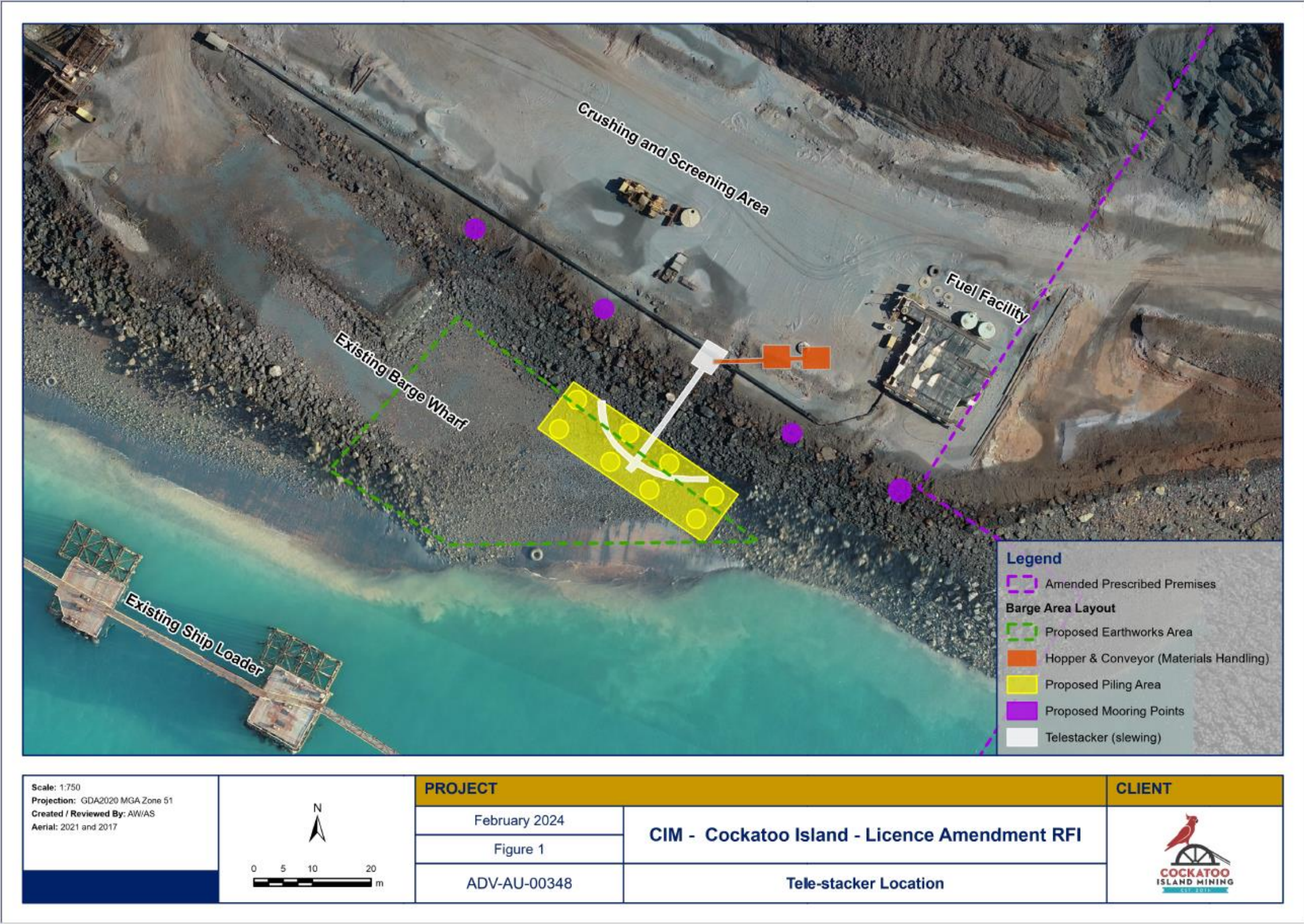
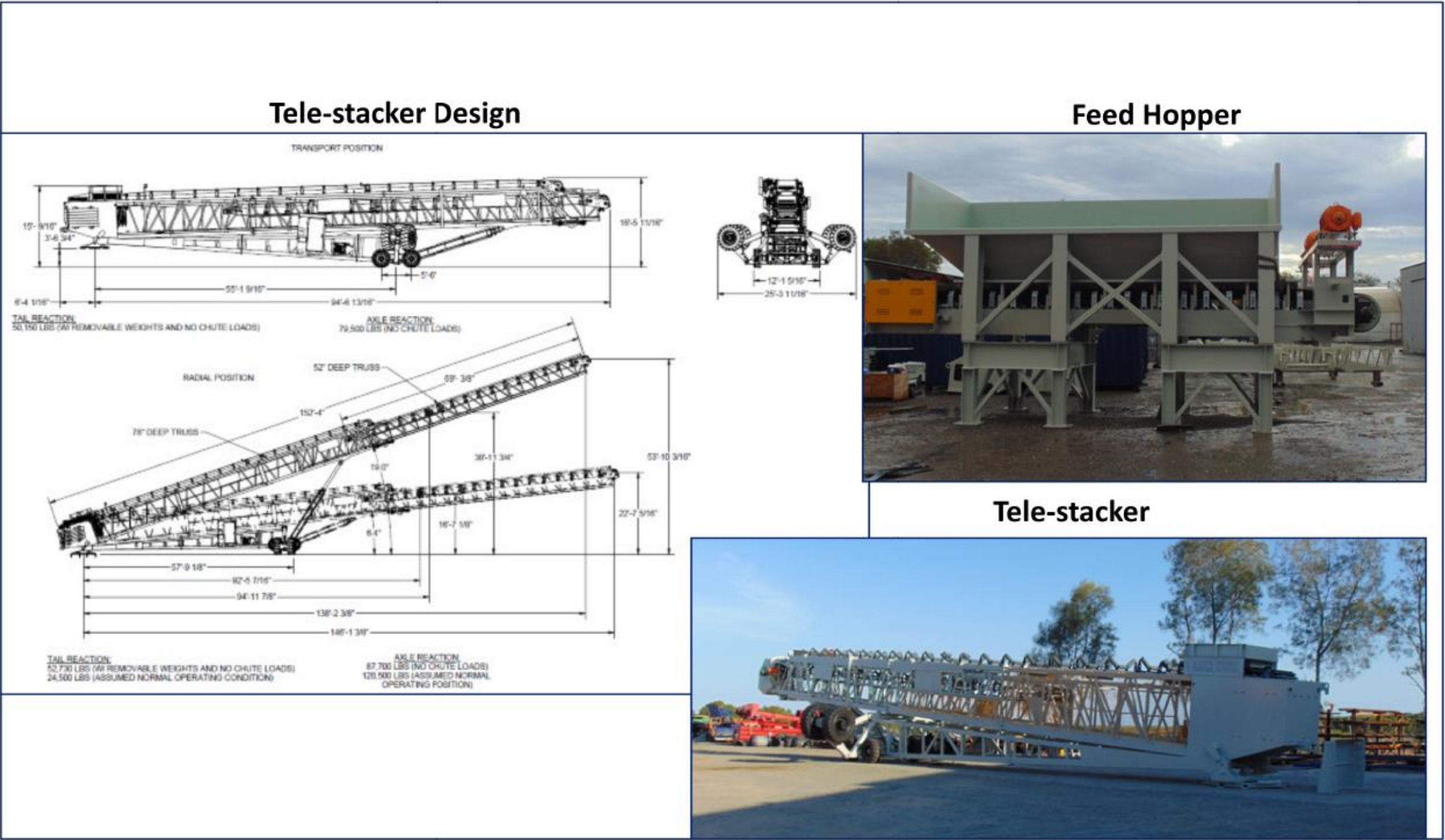


Figure 3: Location of barge wharf and telestacker



Not to Scale Source: CIM	PROJECT		CLIENT
	February 2024	CIM - Cockatoo Island - Licence Amendment RFI	
	Figure 2		
	ADV-AU-00348	Tele-Stacker Specifications	

Copyright © 2023 RPMGlobal Holdings Limited, Brisbane Australia. All Rights Reserved.

C:\Users\VRW\OneDrive\GLOBAL\ADV GIS - Documents\GIS-Projects\Australia-RPM\Cockatoo Island\ADV\00348\CM-EST\BADA\00348.aprx

Figure 4: Telestacker design

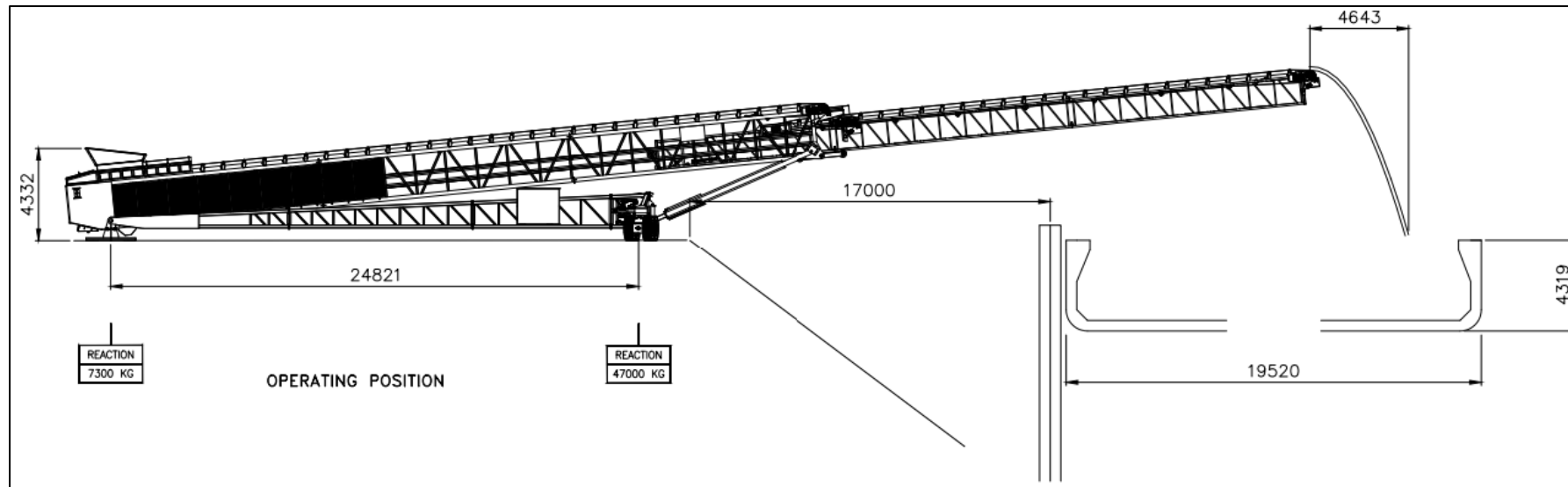


Figure 5: Cross section of telestacker illustrating its fullest extension not protruding past the seaward side of the dumb barge

Schedule 2: Reporting and notification forms

Licence: L6929/1990/16 Licence Holder: Cockatoo Island Mining Pty Ltd
 Form: WR1 Period:
 Name: Monitoring of point source emissions to surface water

Form WR1: Monitoring of point source emissions to surface water						
Emission point	Parameter	Result ¹	Result ¹	Averaging period	Method	Sample date & times
E2	Total Suspended Solids	mg/L	g/day	Spot sample		
	Total Recoverable Hydrocarbons	mg/L	g/day	Spot sample		

Note 1: All units are referenced to STP dry

Signed on behalf of Pluton Resources Limited: Date:

Licence: L6929/1990/16 Licence Holder: Cockatoo Island Mining Pty Ltd
 Form: WR1 Period:
 Name: Monitoring of point source emissions to surface water

Form WR1: Monitoring of point source emissions to surface water						
Emission point	Parameter	Result ¹	Result ¹	Averaging period	Method	Sample date & times
W1	Total Suspended Solids	mg/L	g/day	Spot sample		

Note 1: All units are referenced to STP dry

Signed on behalf of Pluton Resources Limited:

Date:

Licence: L6929/1990/16

Licence Holder: Cockatoo Island Mining Pty Ltd

Form: WR1

Period :

Name: Monitoring of point source emissions to surface water

Form WR1: Monitoring of point source emissions to surface water						
Emission	Parameter	Result ¹	Result ¹	Averaging	Method	Sample date &

n point				period		times
F1	Volumetric flow rate	L/s	m ³ /day			
F2	Volumetric flow rate	L/s	m ³ /day			
F3	Volumetric flow rate	L/s	m ³ /day			
F4	Volumetric flow rate	L/s	m ³ /day			

Note 1: All units are referenced to STP dry

Signed on behalf of Pluton Resources Limited:

Date:

Licence: L6929/1990/16

Licence Holder: Cockatoo Island Mining Pty Ltd

Form: CD1

Date of discharge:

Name: Contingency Discharge Form

Form CD1: Contingency Discharge

Emission point	Discharge Commencement Date & Time	Discharge Cessation Date & Time	Total Volume Discharged	Volumetric flow rate	Total Suspended Solids levels (average of daily analysis)
			m ³	m ³ /day	mg/L

			m ³	m ³ /day	mg/L
Please provide details of the contingency discharge, including but not limited to: <ul style="list-style-type: none"> (a) Copies of daily results of Total Suspended Solids monitoring during discharge; (b) Other monitoring data as relevant (eg. Visual / photographic monitoring) (c) Reason discharge required; and (d) Recorded rainfall (mm) onsite during discharge period. 					

Signed on behalf of Cockatoo Island Mining Pty Ltd: Date:

Licence: L6929/1990/16
Ltd

Licence Holder: Cockatoo Island Mining Pty

Form: N1

Date of breach:

Notification of detection of the breach of a limit.

These pages outline the information that the operator must provide.

Units of measurement used in information supplied under Part A requirements shall be appropriate to the circumstances of the emission. Where appropriate, a comparison should be made of actual emissions and authorised emission limits.

Part A

Licence Number	
Name of operator	
Location of Premises	
Time and date of the detection	

Notification requirements for the breach of a limit	
Emission point reference/ source	
Parameter(s)	
Limit	
Measured value	
Date and time of monitoring	
Measures taken, or intended to be taken, to stop the emission	

Name	
Post	
Signature on behalf of Pluton Resources Limited	
Date	
