



# Works Approval

<b>Works approval number</b>	W6968/2024/1
<b>Works approval holder</b>	ICD Superalloys Australia Pty Ltd
<b>ACN</b>	675 181 987
<b>Registered business address</b>	Level 4, 35 Havelock Street WEST PERTH WA 6005
<b>DWER file number</b>	DER2024/000508
<b>Duration</b>	20/12/2024 to 19/12/2029
<b>Date of issue</b>	20/12/2024
<b>Premises details</b>	Canning Vale Facility Warehouse B, 204-208 Bannister Road CANNING VALE WA 6155 Legal description - Part of Lot 165 on Plan 13436 Certificate of Title Volume 1589 Folio 88 As defined by the coordinates in Schedule 2

<b>Prescribed premises category description</b> (Schedule 1, <i>Environmental Protection Regulations 1987</i> )	<b>Assessed design capacity</b>
Category 47: Scrap metal recovery: premises (other than premises within category 45) on which metal scrap is fragmented or melted, including premises on which lead acid batteries are reprocessed.	18,800 tonnes per year
Category 61A: premises (other than premises within category 67A) on which solid waste produced on other premises is stored, reprocessed, treated or discharged onto land.	18,800 tonnes per year

This works approval is granted to the works approval holder, subject to the attached conditions, on 20 December 2024, by:

GRACE HEYDON - MANAGER, WASTE INDUSTRIES  
an officer delegated under section 20 of the *Environmental Protection Act 1986* (WA)

## Works approval history

Date	Reference number	Summary of changes
20/12/2024	W6968/2024/1	Works approval granted.

## Interpretation

In this works approval:

- (a) the words ‘including’, ‘includes’ and ‘include’ in conditions mean “including but not limited to”, and similar, as appropriate;
- (b) where any word or phrase is given a defined meaning, any other part of speech or other grammatical form of that word or phrase has a corresponding meaning;
- (c) where tables are used in a condition, each row in a table constitutes a separate condition;
- (d) any reference to an Australian or other standard, guideline, or code of practice in this works approval:
  - (i) if dated, refers to that particular version; and
  - (ii) if not dated, refers to the latest version and therefore may be subject to change over time;
- (e) unless specified otherwise, any reference to a section of an Act refers to that section of the EP Act; and
- (f) unless specified otherwise, all definitions are in accordance with the EP Act.

**NOTE:** This works approval requires specific conditions to be met but does not provide any implied authorisation for other emissions, discharges, or activities not specified in this works approval.

## Works approval conditions

The works approval holder must ensure that the following conditions are complied with:

### Construction phase

#### Infrastructure and equipment

1. The works approval holder must:
  - (a) construct and/or install the infrastructure and/or equipment;
  - (b) in accordance with the corresponding design and construction / installation requirements; and
  - (c) at the corresponding infrastructure location as set out in Table 1.

**Table 1: Design and construction / installation requirements**

	Infrastructure	Design and construction / installation requirements	Infrastructure location
1.	Processing Warehouse B	<p>The workshop must be constructed to the following specifications:</p> <ul style="list-style-type: none"> <li>Constructed of metal with a concrete impermeable base;</li> <li>Warehouse must be enclosed;</li> <li>The floor of the processing building to be free of leaks and defects and constructed with a concrete hardstand with a permeability of less than <math>1 \times 10^{-9}</math> m/s;</li> <li>Hardstand must have a minimum 1% drainage gradient to ensure free drainage to the sumps;</li> <li>All plant and equipment to be free of leaks and defects; and</li> <li>Infrastructure to be installed so as to operate in the sequence outlined in Figure 2, Schedule 1.</li> </ul>	Schedule 1: Maps Figure 2
2.	Plasma-cutting station area	<ul style="list-style-type: none"> <li>Must be located inside the warehouse; and</li> <li>Local exhaust ventilation (LEV) must be installed with filter and external exhaust to the environment.</li> </ul>	Schedule 1: Maps Figure 2
3.	Shot blasting booth area	<ul style="list-style-type: none"> <li>Must be located inside the warehouse;</li> <li>Chamber must be installed in accordance with the Environmental Protection (Abrasive Blasting) Regulations 1998; and</li> <li>Must be installed with a ventilation and dust extraction system.</li> </ul>	Schedule 1: Maps Figure 2
4.	Metal turnings shredder and wash plant	<ul style="list-style-type: none"> <li>Must be located inside the warehouse</li> </ul>	Schedule 1: Maps Figure 2

	Infrastructure	Design and construction / installation requirements	Infrastructure location
5.	Cutting shears (240 t and 260 t) and Baler	<ul style="list-style-type: none"> <li>Must be located within the process area inside the warehouse</li> </ul>	Schedule 1: Maps Figure 2

### Compliance reporting

2. The works approval holder must within 30 days of an item of infrastructure or equipment required by condition 1 being constructed and/or installed:
  - (a) undertake an audit of their compliance with the requirements of condition 1; and
  - (b) prepare and submit to the CEO an Environmental Compliance Report on that compliance.
3. The Environmental Compliance Report required by condition 2, must include as a minimum the following:
  - (a) certification by a suitably qualified person that the items of infrastructure or component(s) thereof, as specified in condition 1, have been constructed in accordance with the relevant requirements specified in condition 1;
  - (b) as constructed plans and a detailed site plan for each item of infrastructure or component of infrastructure specified in condition 1; and
  - (c) be signed by a person authorised to represent the works approval holder and contains the printed name and position of that person.

### Time limited operations phase

#### Commencement and duration

4. The works approval holder may only commence time limited operations for an item of infrastructure identified in condition 1 where the Environmental Compliance Report as required by condition 2 has been submitted by the works approval holder for that item of infrastructure.
5. The works approval holder may conduct time limited operations for an item of infrastructure specified in condition 6:
  - (a). for a period not exceeding 180 calendar days from the day the works approval holder meets the requirements of condition 4 for that item of infrastructure; or
  - (b). until such time as a licence for that item of infrastructure is granted in accordance with Part V of the *Environmental Protection Act 1986*, if one is granted before the end of the period specified in condition 5(a).

#### Time limited operations requirements

6. During time limited operations, the works approval holder must ensure that the premises infrastructure and equipment listed in Table 2 and located at the corresponding infrastructure location is maintained and operated in accordance with the corresponding operational requirement set out in Table 2.

**Table 2: Infrastructure and equipment requirements during time limited operations**

	Site infrastructure and equipment	Operational requirement	Infrastructure location
1	Plasma cutting system	Must be maintained in accordance with manufacturer's specifications.	Schedule 1: Maps Figure 2
2	Shears and baler	Must be operated in a manner that ensures that noise emissions comply with the <i>Environmental Protection (noise) Regulations 1997</i> .  Operated in accordance with the <i>Environmental Protection (Abrasive Blasting) Regulations 1998</i> .  Must be positioned on a hardstand area and maintained free of leaks and defects.	
3	Shotblasting		
4	Metal turnings and washing		
5	All on-site fire management and prevention equipment	All on-site fire management and prevention equipment to be stored so access is not impeded by infrastructure or equipment used in site operations; and  All on-site fire management and prevention equipment must be maintained and in good working order at all times.	NA

### Waste acceptance

7. The works holder must only accept onto the premises waste of a waste type that;
- does not exceed the corresponding rate at which waste is received, and
  - meets the corresponding acceptance specification,
- as set out in Table 3.

**Table 3: Types of waste authorised to be accepted onto the premises**

Waste type	Rate at which waste is received	Acceptance specifications
Scrap metal (ferrous and non-ferrous)	Combined total of 18,800 tonnes per annual period	<ol style="list-style-type: none"> <li>Pure metals</li> <li>Alloys and revert</li> <li>Ferro alloys</li> <li>Rare earth metals</li> <li>Ferrous metal fillings and turnings</li> <li>Non-ferrous metal fillings and turnings</li> </ol>

8. The works approval holder must ensure that where waste does not meet the waste acceptance criteria set out in condition 7, it is removed from the premises by the delivery vehicle or, where that is not possible, stored in a quarantined storage area or container and removed to an appropriately authorised facility as soon as practicable.

## Waste processing

9. The works approval holder must ensure that the waste types specified in Table 3 are only subjected to the corresponding process(es), subject to the corresponding process limits and/or specifications.

**Table 4: Waste processing**

Waste type	Process(es)	Process limits and/or specifications
Scrap metal (ferrous and non – ferrous)	Receipt, handling, sorting, bulking up, shearing, plasma cutting, baling, shotblasting, shredding, washing, screening, dewatering, drying and bagging prior to removal offsite for further processing.	<p><b>Acceptance Requirement:</b></p> <ul style="list-style-type: none"> <li>Inspection of all materials received at the premises for the removal of non-conforming waste.</li> </ul> <p><b>Processing requirements:</b></p> <ul style="list-style-type: none"> <li>All processing activities must be undertaken within enclosed warehouse with sealed concrete floors and concrete panel walls (below steel cladding).</li> <li>Must use environmentally friendly blend of surfactants to clean and degrease the metal turnings.</li> <li>Ensure used wash solution is filtered and returned to the wash tank for reuse.</li> <li>Water used for rinsing the metal turnings must be drained to IBCs and temporarily stored on-site before removal to an appropriately licensed facility for treatment.</li> <li>No visible dust must escape from the blasting chamber.</li> <li>Air from the blasting chamber must pass through the ventilation and dust extraction system before being discharged into the environment.</li> <li>Air discharged into the environment must not contain any visible dust.</li> <li>Ensure good housekeeping services are maintained within the warehouse.</li> <li>Non-tonal reversing beepers must be used on mobile handling plant.</li> </ul> <p><b>Storage requirements:</b></p> <ul style="list-style-type: none"> <li>No more than 12,000 L of wash water must be stored on site at any one time;</li> <li>Water used for rinsing the metal turnings must be drained to IBCs and temporarily stored on site on spill pallets.</li> </ul>

## Emission and discharge

10. The works approval holder must ensure that:
- all reasonable and practicable measures are taken to ensure that no windblown waste escapes from the premises; and
  - any windblown waste is collected on at least a weekly basis and returned to appropriately contained.
11. The works approval holder must ensure that no visible dust generated from the

primary activities crosses the boundary of the premises.

12. The licence holder must ensure that noise generating activities at the premises only occur Monday to Saturday between the hours of 07:00 and 19:00.
13. The works approval holder must immediately recover, or remove and dispose of, spills of environmentally hazardous materials including fuel, oil, or other hydrocarbons, whether inside or outside an engineered containment system.
14. The works approval holder must ensure that all material used for the recovery, removal, and/or disposal of environmentally hazardous materials is stored in an impermeable container prior to disposal at an appropriately authorised facility.
15. The works approval holder must take all reasonable and practicable measures to prevent stormwater run-off becoming contaminated by the activities and operations undertaken at the premises.

### Monitoring during time limited operations

16. The works approval holder must record the total amount of waste accepted onto and removed from the premises, for each waste type listed in Table 5, in the corresponding unit, and for each corresponding time period, as set out in Table 5.

**Table 5: Waste accepted onto the premises**

Waste type	Unit	Time period	Frequency
Waste input	m <sup>3</sup> or tonnes	Annual period	Each load arriving at the premises
Waste output	m <sup>3</sup> or tonnes		Each load leaving or rejected from the premises

### Fire and emergency management

17. The works approval holder must implement a Fire and Emergency Management Plan that is consistent with Australian Standard AS3745. The plan must include, but is not limited to:
  - (a) notification procedures for fire and major spill incidents;
  - (b) how fires will be prevented, detected, responded to, suppressed, contained and controlled for all approved activities addressing all waste types and for all stages of the waste handling, sorting and processing;
  - (c) in the event of a fire occurring at the premises, how impacts to the environment and human health will be mitigated;
  - (d) how staff will be trained in fire and emergency response on an ongoing, annual basis;
  - (e) details on the firefighting equipment in place and/or accessible at the premises and the fire response capabilities and responsibilities;
  - (f) a premises map displayed at the front of the premises depicting an after-hours contact details, plus the location and layout of:
    - (i) fire hose reels, hydrants and isolation points;
    - (ii) electrical isolation points;
    - (iii) sub-surface drainage infrastructure, including details on flow direction and off-site discharge locations (if applicable);
    - (iv) system shutdown points; and

- (v) fire response access points to the premises;
  - (g) hazmat manifest displayed at front of the premises;
  - (h) ensure that pollution control equipment such as fire water booms, drain mats, or sandbags (or any other compatible absorbent material) be available on site, sufficient to divert run-off from, or prevent drainage into stormwater drains;
  - (i) ensure that pollution control equipment listed in condition 17(h) be deployed, when possible and safe to do so, in the event of a fire; and
  - (j) ensure that any water generated from fire-fighting activities is removed from the Premises by a carrier licensed under the *Environmental Protection (Controlled Waste) Regulations 2004*.
- 18.** The works approval holder must immediately notify the CEO of:
- (a) any fire on the premises; and/or
  - (b) any accident, malfunction, or emergency which results or could result in the discharge of fire-fighting washwater or other wastes from the premises.

### Noise validation

- 19.** Within 60 days of the commencement date of time limited operations, the works approval holder must retain the services of a person qualified and experienced in the area of environmental noise assessment and who by their qualifications and experience is eligible to hold membership of the Australian Acoustical Society or the Australian Association of Acoustical Consultants to:
- (a). investigate the nature and extent of noise emissions from the premises;
  - (b). assess in accordance with the methodology required in the *Environmental Protection (Noise) Regulations 1997*, the compliance of the noise emissions from the primary activities, against the relevant assigned levels specified in those Regulations; and
  - (c). compile and submit to the works approval holder within 4 months of the commencement date of time limited operations a report in accordance with condition 20.
- 20.** A report prepared pursuant to condition 19(c) is to include:
- (a). a description of the methods used for monitoring and/or modelling of noise emissions from the premises;
  - (b). details and the results of the investigation undertaken pursuant to condition 19(a);
  - (c). details and results of the assessment of the noise emissions from the premises, against the relevant assigned levels in the *Environmental Protection (Noise) Regulations 1997* undertaken pursuant to condition 19(b); and
  - (d). an assessment of noise levels against the most recent previous noise assessment.
- 21.** The works approval holder must submit to the CEO the report prepared pursuant to condition 19(c) within 14 days of receiving it.
- 22.** Where an assessment pursuant to condition 19(b) indicates that noise emissions do not comply with the relevant assigned levels in the *Environmental Protection (Noise) Regulations 1997*, the license holder must:



- (a). within 60 days of receiving an assessment report pursuant to condition 20(c) prepare a plan to ensure the undertaking of the licensed activity will no longer lead to any contravention of the *Environmental Protection (Noise) Regulations 1997*; and
- (b). provide to the CEO a copy of the plan prepared pursuant to condition 22(a) within 30 days of its preparation.

### Compliance reporting

- 23. The works approval holder must submit to the CEO a report on the time limited operations within 30 calendar days of the completion date of time limited operations or 30 calendar days before the expiration date of the works approval, whichever is the sooner.
- 24. The works approval holder must ensure the report required by condition 23 includes the following:
  - (a). a summary of monitoring results obtained during time limited operations under condition 16;
  - (b). a review of performance and compliance against the conditions of the works approval; and
  - (c). where the manufacturer's design specifications and the conditions of this works approval have not been met, what measures will the works approval holder take to meet them, and what timeframes will be required to implement those measures.

### Records and reporting (general)

- 25. The works approval holder must record the following information in relation to complaints received by the works approval holder (whether received directly from a complainant or forwarded to them by the Department or another party) about any alleged emissions from the premises:
  - (a) the name and contact details of the complainant, (if provided);
  - (b) the time and date of the complaint;
  - (c) the complete details of the complaint and any other concerns or other issues raised; and
  - (d) the complete details and dates of any action taken by the works approval holder to investigate or respond to any complaint.
- 26. The works approval holder must maintain accurate and auditable books including the following records, information, reports, and data required by this works approval:
  - (a) the works conducted in accordance with condition 1;
  - (b) any maintenance of infrastructure that is performed in the course of complying with condition 6;
  - (c) monitoring programmes undertaken in accordance with condition 16; and
  - (d) complaints received under condition 25.
- 27. The books specified under condition 26 must:
  - (a) be legible;

- (b) if amended, be amended in such a way that the original version(s) and any subsequent amendments remain legible and are capable of retrieval;
- (c) be retained by the works approval holder for the duration of the works approval; and
- (d) be available to be produced to an inspector or the CEO as required.

## Definitions

In this works approval, the terms in Table 66 have the meanings defined.

**Table 6: Definitions**

Term	Definition
annual period	a 12 month period commencing from 1 January until 31 December of the same year.
AS/NZS 5667.1	means the Australian Standard <i>AS/NZS 5667.1 (R2016) Water quality – sampling – guidance of the design of sampling programs, sampling techniques and the preservation and handling of samples</i> , as amended from time to time
AS3745	means the Australian Standard AS3745 Planning for Emergencies in Facilities
books	has the same meaning given to that term under the EP Act.
CEO	means Chief Executive Officer. CEO for the purposes of notification means: Director General Department administering the <i>Environmental Protection Act 1986</i> Locked Bag 10 Joondalup DC WA 6919 <a href="mailto:info@dwer.wa.gov.au">info@dwer.wa.gov.au</a>
Department	means the department established under section 35 of the <i>Public Sector Management Act 1994</i> and designated as responsible for the administration of Part V Division 3 of the EP Act.
discharge	has the same meaning given to that term under the EP Act.
emission	has the same meaning given to that term under the EP Act.
Environmental Compliance Report	means a report to satisfy the CEO that the conditioned infrastructure and/or equipment has been constructed and/or installed in accordance with the works approval.
EP Act	<i>Environmental Protection Act 1986</i> (WA).
EP Regulations	<i>Environmental Protection Regulations 1987</i> (WA).
NATA	means the National Association of Testing Authorities
NATA accredited	means in relation to the analysis of a sample, that the laboratory is NATA accredited for the specified analysis at the time of the analysis.
premises	the premises to which this works approval applies, as specified at

Term	Definition
	the front of this works approval and as shown on the premises map (Figure 1) in Schedule 1 to this works approval.
prescribed premises	has the same meaning given to that term under the EP Act.
suitably qualified person	means a person who: <ul style="list-style-type: none"> <li>(a) holds a Bachelor of Engineering degree recognised by the Institute of Engineers; and</li> <li>(b) has a minimum of five years of experience working in the field of engineering;</li> </ul> or is otherwise approved in writing by the CEO to act in this capacity.
time limited operations	refers to the operation of the infrastructure and equipment identified under this works approval that is authorised for that purpose, subject to the relevant conditions.
waste	has the same meaning given to that term under the EP Act.
works approval	refers to this document, which evidences the grant of the works approval by the CEO under section 54 of the EP Act, subject to the conditions.
works approval holder	refers to the occupier of the premises being the person to whom this works approval has been granted, as specified at the front of this works approval.

---

**END OF CONDITIONS**

## Schedule 1: Maps

### Premises map

The boundary of the prescribed premises is shown in the map below (Figure 1).

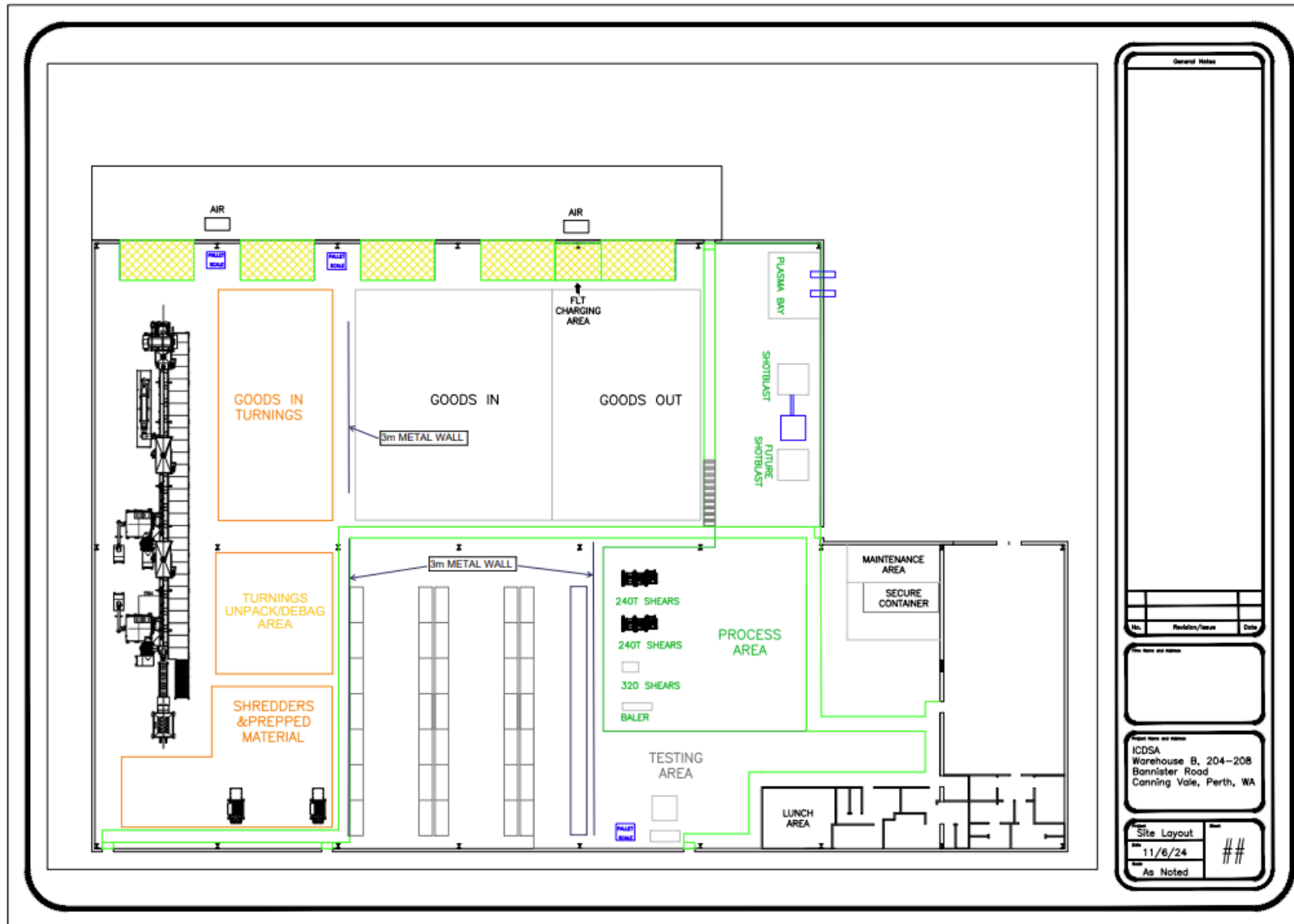


Figure 1: Map of the boundary of the prescribed premises

W6968/2024/1 (20 December 2024)

IR-T05 Works approval template (v6.0) (September 2022)





**Figure 2: Proposed site plan**

W6968/2024/1 (20 December 2024)

IR-T05 Works approval template (v6.0) (September 2022)

## Schedule 2: Premises boundary

The corners of the premises boundary are the coordinates listed in Table 7.

**Table 7: Premises boundary coordinates (GDA2020)**

	<b>Easting</b>	<b>Northing</b>	<b>Zone</b>
1.	396601.5381	6451817.155	50
2.	396584.1128	6451933.643	50
3.	396675.6522	6451946.119	50
4.	396681.837	6451897.997	50