



<b>Works approval number</b>	W6717/2022/1
<b>Works approval holder</b>	Paddington Gold Pty Ltd
<b>ACN</b>	008 585 886
<b>Registered business address</b>	Level 1, Viskovich House 377 Hannan Street KALGOORLIE WA 6430
<b>DWER file number</b>	DER2022/000263
<b>Duration</b>	16/12/2022 to 16/12/2027
<b>Date of issue</b>	16/12/2022
<b>Date of amendment</b>	13/02/2025
<b>Premises details</b>	Golden Cities (Golden Arrow Pit)  Part of mining tenements: L24/228, M24/188, M24/251, M24/876, M24/557, M24/425, M24/564 and M24/565 Kanowna As depicted in Schedule 1

<b>Prescribed premises category description (Schedule 1, <i>Environmental Protection Regulations 1987</i>)</b>	<b>Assessed production / design capacity</b>
Category 6: Mine dewatering: premises on which water is extracted and discharged into the environment to allow mining of ore.	7,000,000 tonnes per year.

This amended works approval is granted to the works approval holder, subject to the attached conditions, on 13 February 2025 by:

MANAGER, RESOURCES INDUSTRIES  
an officer delegated under section 20 of the *Environmental Protection Act 1986* (WA)

## Works approval history

Date	Reference number	Summary of changes
16/12/2022	W6717/2022/1	Works approval granted.
29/11/2023	W6717/2022/1	Removal of dewatering pipe prescribed diameter under condition 1, Table 1, Infrastructure.
13/02/2025	W6717/2022/1	Addition of connecting pipelines and new turkeys nest at Jakarta pit.

## Interpretation

In this works approval:

- (a) the words 'including', 'includes' and 'include' in conditions mean "including but not limited to", and similar, as appropriate;
- (b) where any word or phrase is given a defined meaning, any other part of speech or other grammatical form of that word or phrase has a corresponding meaning;
- (c) where tables are used in a condition, each row in a table constitutes a separate condition;
- (d) any reference to an Australian or other standard, guideline, or code of practice in this works approval:
  - (i) if dated, refers to that particular version; and
  - (ii) if not dated, refers to the latest version and therefore may be subject to change over time;
- (e) unless specified otherwise, any reference to a section of an Act refers to that section of the EP Act; and
- (f) unless specified otherwise, all definitions are in accordance with the EP Act.

**NOTE:** This works approval requires specific conditions to be met but does not provide any implied authorisation for other emissions, discharges, or activities not specified in this works approval.

## Works approval conditions

The works approval holder must ensure that the following conditions are complied with:

### Construction phase

#### Infrastructure and equipment

1. The works approval holder must:
  - (a) construct and install the infrastructure;
  - (b) in accordance with the corresponding construction and installation requirements; and
  - (c) at the corresponding infrastructure location;
 as set out in Table 1.

**Table 1: Infrastructure construction and installation requirements**

Infrastructure	Construction and installation requirements	Infrastructure location
Dewatering pipelines	<p>Single weld pipeline, to be laid within v-drains or buried.</p> <p>Required to meet the following standards:</p> <ul style="list-style-type: none"> <li>• AS/NZS 2033:3008: Installation of polyethylene pipe systems;</li> <li>• AS/NZS 4129:2008: Fittings for polyethylene (PE) pipes for pressure applications;</li> <li>• AS/NZS 4130:2009 Polyethylene (PE) pipes for pressure applications; and</li> <li>• AS/NZS 4131:2010: Polyethylene (PE) compounds for pressure pipes and fittings.</li> </ul> <p>Ensure that all pipelines containing mine dewater are either:</p> <ol style="list-style-type: none"> <li>(a) equipped with telemetry systems and pressure sensors along pipelines to allow the detection of leaks and failures; and/or</li> <li>(b) equipped with automatic cut-outs in the event of a pipe failure; and</li> <li>(c) provided with secondary containment sufficient to contain any spill for a period equal to the time between routine inspections.</li> </ol>	Pipeline route to be located as shown in Figure 3 and Figure 4, in Schedule 1
Secondary containment: V-drains and scour pits	The v-drains and scour pits in combination must have sufficient capacity to completely contain any spills for a period equal to the time between routine inspections.	Pipeline corridor to be located as shown in Figure 3, in Schedule 1
Jakarta pump station	Pump station to have secondary containment that directs water into the Jakarta open pit in the event of a significant release of water.	Jakarta open pit as shown in Figure 3, in Schedule 1

Infrastructure	Construction and installation requirements	Infrastructure location
Jakarta Turkey's Nest	Turkey's nest to be HDPE lined. Turkeys' nest to have an approximate capacity of 10,000 m <sup>3</sup> .	Jakarta Turkey's Nest to be located as shown in Figure 4, in Schedule 1

2. The works approval holder must ensure that no visible dust generated from the construction or installation of infrastructure in Table 1, crosses the boundary of the premises.
3. The works approval holder must ensure that construction of the infrastructure within 1,000 m of the Goldfields Highway only occurs between the hours of 07:00 and 19:00 on Monday through to Saturday.

### Compliance reporting

4. The works approval holder must within 28 calendar days of the infrastructure required by condition 1 being constructed and/or installed:
  - (a) undertake an audit of their compliance with the requirements of conditions 1 and 3; and
  - (b) prepare and submit to the CEO an Environmental Compliance Report on that compliance.
5. The Environmental Compliance Report required by condition 4, must include as a minimum the following:
  - (a) certification by a qualified engineer that the items of infrastructure or component(s) thereof, as specified in condition 1, have been constructed in accordance with the relevant requirements specified in condition 1;
  - (b) as constructed plans and a detailed site plan for each component of infrastructure specified in condition 1;
  - (c) the details of any complaints received during construction in accordance with condition 13; and
  - (d) be signed by a person authorised to represent the works approval holder and contains the printed name and position of that person.

### Time limited operations phase

#### Commencement and duration

6. The works approval holder may only commence time limited operations for an item of infrastructure identified in condition 1, where the Environmental Compliance Report as required by condition 4 has been submitted by the works approval holder for that item of infrastructure.
7. The works approval holder may conduct time limited operations for an item of infrastructure specified in condition 1 (as applicable):
  - (a) for a period not exceeding 180 calendar days from the day the works approval holder meets the requirements of condition 6 for that item of infrastructure; or
  - (b) until such time as a licence for that item of infrastructure is granted in accordance with Part V of the Environmental Protection Act 1986, if one is granted before the end of the period specified in condition 7(a).

### Time limited operations requirements and emission limits

8. During time limited operations, the works approval holder is only authorised to discharge mine dewater to the Golden Arrow pit at the discharge points depicted in Schedule 1, Figure 2.
9. During time limited operations, the works approval holder must ensure that the infrastructure listed in Table 2 is maintained and operated in accordance with the corresponding operational requirements set out in Table 2.

**Table 2: Infrastructure and equipment requirements during time limited operations**

Site Infrastructure	Operational requirements
Dewatering pipelines and secondary containment	Minimum 12 hourly inspections when operating, recorded in a written log.
Golden Arrow pit	A minimum vertical freeboard of 6 m must be maintained below the pit crest level.
Jakarta Turkey's Nest	A minimum vertical freeboard of 0.5 m must be maintained at all times.  HDPE Liner must be maintained in good working order.

### Monitoring during time limited operations

10. The works approval holder must monitor the specified parameters in accordance with Table 3 and record the results of all such monitoring.

**Table 3: Discharge monitoring during time limited operations**

Location	Parameter	Frequency	Unit	Method
Dewatering discharge to Golden Arrow pit	Volumetric flow rate	Continuous	kL	Flow metering device
Golden Arrow pit lake	Total Dissolved Solids <sup>1</sup>	Monthly <sup>2</sup>	mg/L	AS/NZS 5667.1
	pH <sup>1</sup>	Monthly <sup>2</sup>	pH units	
	Standing water level	Monthly <sup>2</sup>	metres below pit crest level	

Note 1: In-field non-NATA accredited analysis permitted

Note 2: When discharge is occurring during the month

### Compliance reporting

11. The works approval holder must submit to the CEO a report on the time limited operations within 30 calendar days of the completion date of time limited operations or 30 calendar days before the expiration date of the works approval, whichever is the sooner.

- 12.** The works approval holder must ensure the report required by condition 11 includes the following:
- (a) a summary of the time limited operations, including timeframes and the volume of dewatering discharged;
  - (b) a summary of monitoring results obtained during time limited operations under condition 10
  - (c) the details of any complaints received during time limited operations in accordance with condition 13;
  - (d) a summary of the environmental performance of all infrastructure as constructed or installed (as applicable), which includes records detailing any:
    - (i) leaks or failures of the pipelines; and
    - (ii) the performance of the secondary containment in preventing releases to the environment.
  - (e) a review of performance and compliance against the conditions of the works approval; and
  - (f) where the manufacturer's design specifications and the conditions of this works approval have not been met, what measures will the works approval holder take to meet them, and what timeframes will be required to implement those measures.

### Records and reporting (general)

- 13.** The works approval holder must record the following information in relation to complaints received by the works approval holder (whether received directly from a complainant or forwarded to them by the Department or another party) about any alleged emissions from the premises:
- (a) the name and contact details of the complainant, (if provided);
  - (b) the time and date of the complaint;
  - (c) the complete details of the complaint and any other concerns or other issues raised; and
  - (d) the complete details and dates of any action taken by the works approval holder to investigate or respond to any complaint.
- 14.** The works approval holder must maintain accurate and auditable books including the following records, information, reports, and data required by this works approval:
- (a) the works conducted in accordance with condition 1;
  - (b) any maintenance of infrastructure that is performed in the course of complying with condition 1;
  - (c) monitoring programmes undertaken in accordance with condition 10; and
  - (d) complaints received under condition 13.
- 15.** The books specified under condition 14 must:
- (a) be legible;
  - (b) if amended, be amended in such a way that the original version(s) and any subsequent amendments remain legible and are capable of retrieval;
  - (c) be retained by the works approval holder for the duration of the works approval; and
  - (d) be available to be produced to an inspector or the CEO as required.

## Definitions

In this works approval, the terms in Table 4 have the meanings defined.

**Table 4: Definitions**

Term	Definition
AS/NZS 5667.1	AS/NZS 5667.1 means the Australian Standard AS/NZS 5667.1 <i>Water Quality – Sampling – Guidance on the design of sampling programs, sampling techniques and the preservation and handling of samples.</i>
books	has the same meaning given to that term under the EP Act.
CEO	means Chief Executive Officer. CEO for the purposes of notification means: Director General Department administering the <i>Environmental Protection Act 1986</i> Locked Bag 10 Joondalup DC WA 6919 <a href="mailto:info@dwer.wa.gov.au">info@dwer.wa.gov.au</a>
Department	means the department established under section 35 of the <i>Public Sector Management Act 1994</i> and designated as responsible for the administration of Part V Division 3 of the EP Act.
discharge	has the same meaning given to that term under the EP Act.
emission	has the same meaning given to that term under the EP Act.
Environmental Compliance Report	means a report to satisfy the CEO that the conditioned infrastructure and/or equipment has been constructed and/or installed in accordance with the works approval.
EP Act	<i>Environmental Protection Act 1986</i> (WA).
EP Regulations	<i>Environmental Protection Regulations 1987</i> (WA).
HDPE	High-density Polyethylene
premises	the premises to which this licence applies, as specified at the front of this licence and as shown on the premises map (Figure 1) in Schedule 1 to this works approval.
prescribed premises	has the same meaning given to that term under the EP Act.
time limited operations	refers to the operation of the infrastructure and equipment identified under this works approval that is authorised for that purpose, subject to the relevant conditions.
waste	has the same meaning given to that term under the EP Act.
works approval	refers to this document, which evidences the grant of the works approval by the CEO under section 54 of the EP Act, subject to the conditions.
works approval holder	refers to the occupier of the premises being the person to whom this works approval has been granted, as specified at the front of this works approval.

---

**END OF CONDITIONS**



## Schedule 1: Maps

### Premises map

The boundary of the prescribed premises is shown in the map below (Figure 1).

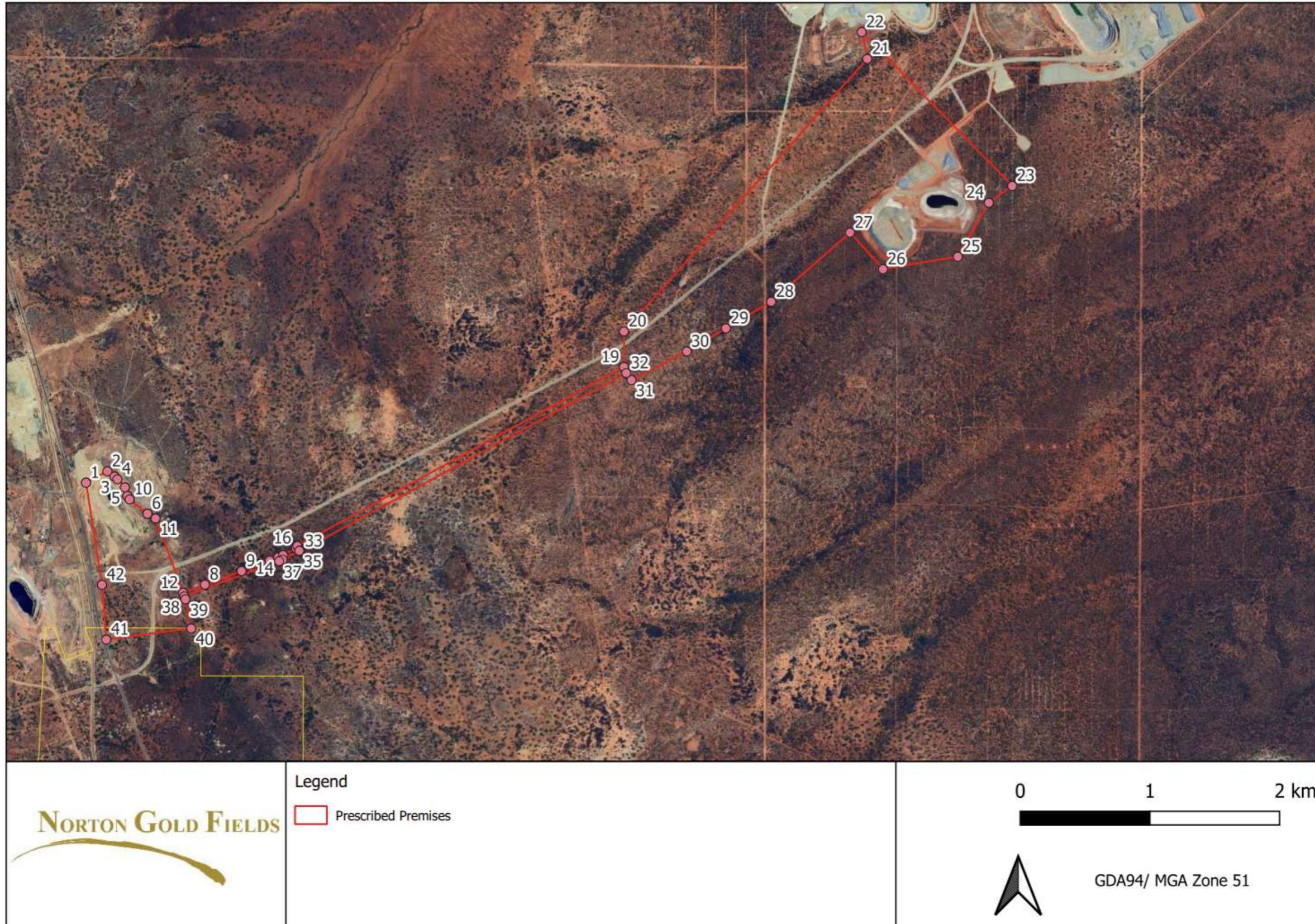


Figure 1: Map of the boundary of the prescribed premises

The authorised discharge points for Golden Arrow Pit are shown in the map below (Figure 2).



Figure 2: Authorised discharge points

The pipeline corridor location between Jakarta Pit and Golden Arrow Pit is shown below (Figure 3).

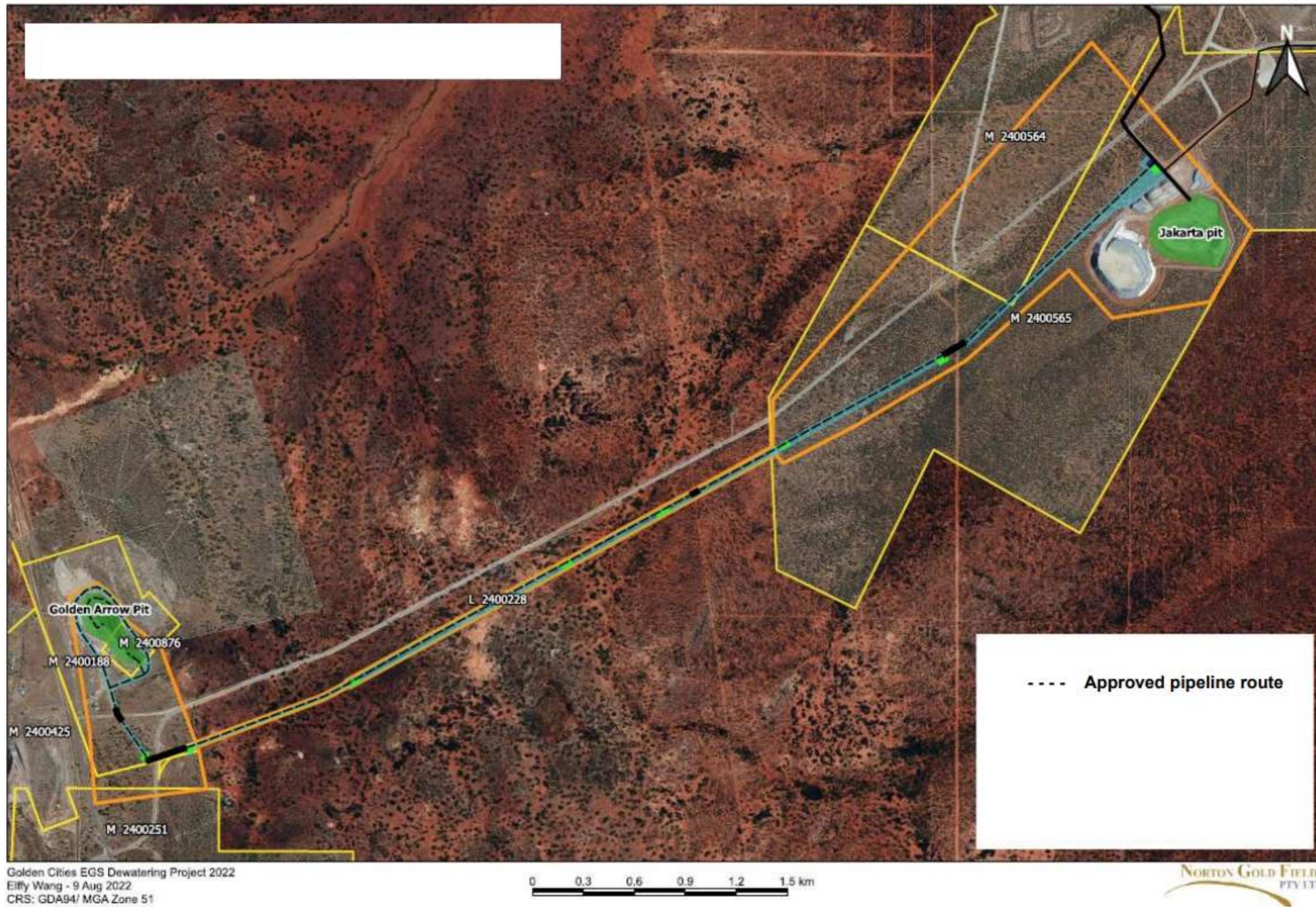


Figure 3: Location of pipeline corridor

The pipeline corridor locations connecting the Jakarta Turkey's nest and pump station with the dewatering pipeline network is shown below (Figure 4)

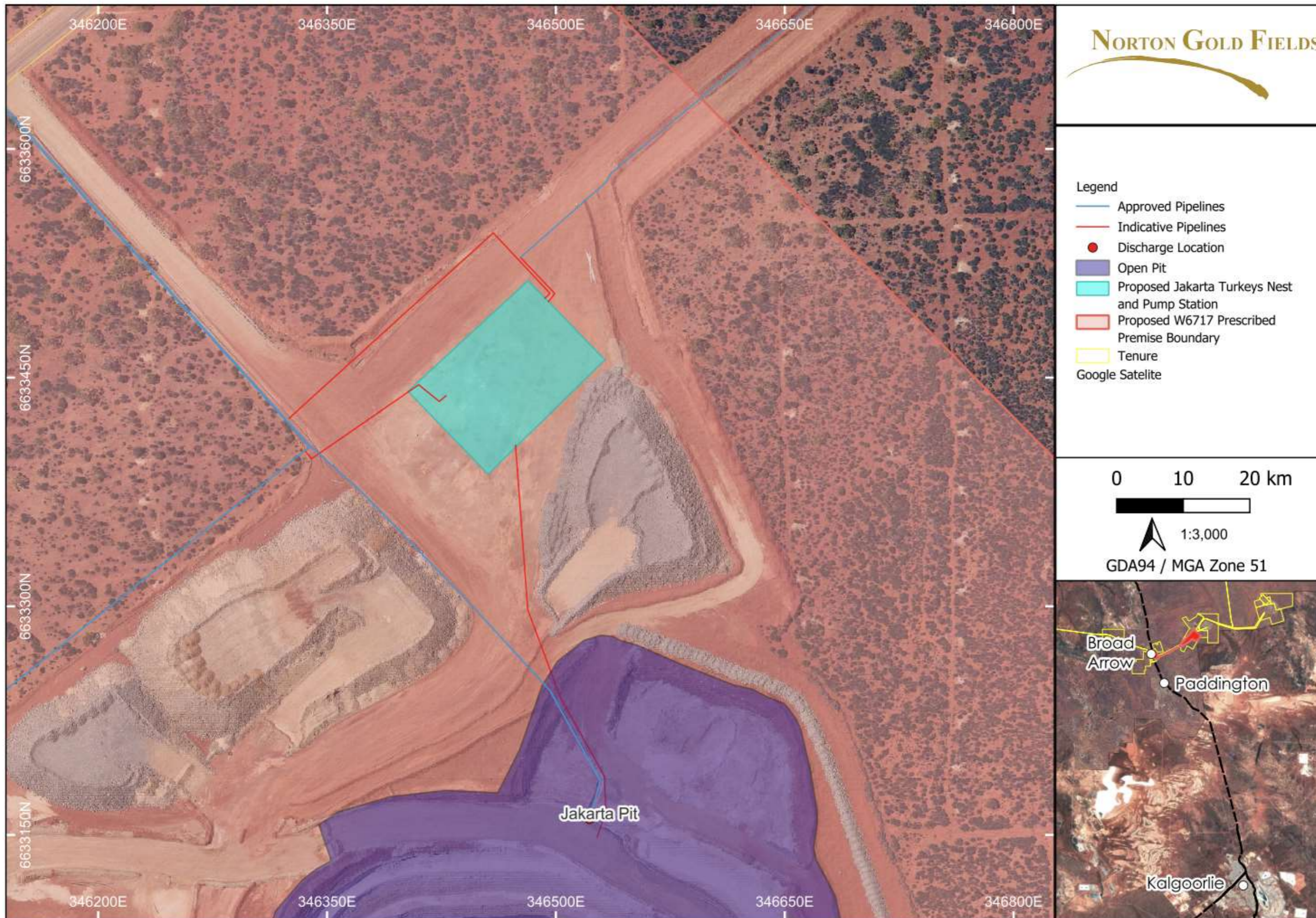


Figure 4: Location of the Jakarta Pit Turkeys Nest

## Schedule 2: Premises boundary

The corners of the premises boundary are the coordinates listed in Table 5.

**Table 5: Premises boundary coordinates (GDA2020)**

	<b>Easting</b>	<b>Northing</b>	<b>Zone</b>
1.	340014.5	6630115.3	51
2.	339891	6630901	51
3.	340056.4	6630988.6	51
4.	340110.8	6630949.3	51
5.	340133.9	6630928.1	51
6.	340191.7	6630865.3	51
7.	340210.6	6630799	51
8.	340227.1	6630772.7	51
9.	340365	6630662.6	51
10.	340427.8	6630626.2	51
11.	340639.2	6630053.6	51
12.	340649.6	6630025.6	51
13.	342545.9	6630919.1	51
14.	342481.1	6630883.6	51
15.	341975.4	6630606.6	51
16.	341544.8	6630372	51
17.	341540.3	6630379.7	51
18.	341535.7	6630377.3	51
19.	341407.2	6630308.8	51
20.	341380.2	6630297	51
21.	341348.3	6630284.6	51
22.	340649.6	6630025.5	51
23.	340639.2	6630053.7	51
24.	340808.6	6630116.5	51
25.	341091	6630221.2	51

	<b>Easting</b>	<b>Northing</b>	<b>Zone</b>
26.	346612.6	6632641.7	51
27.	340657.6	6630003.8	51
28.	340702.6	6629779.2	51
29.	340047.5	6629692.8	51
30.	340014.5	6630115.3	51
31.	345781.5	6632827.2	51
32.	345174.2	6632295	51
33.	344824.7	6632090.1	51
34.	344522.9	6631911.8	51
35.	344096.8	6631691.9	51
36.	344056.1	6631745.9	51
37.	343715	6631559.2	51
38.	343464.9	6631422.2	51
39.	343053.3	6631196.9	51
40.	341307.5	6630301.4	51
41.	341352.5	6630318.3	51
42.	341373.2	6630326.6	51
43.	341410.9	6630343.9	51
44.	341509.5	6630397.1	51
45.	341525.1	6630405.7	51
46.	341521.1	6630413.6	51
47.	342925.5	6631183.9	51
48.	343043.4	6631248.5	51
49.	344038.5	6631792.8	51
50.	344038.5	6632066.1	51
51.	345914.6	6634165.1	51
52.	346857.8	6633068.1	51