



## Application for Licence Amendment

### Part V Division 3 of the *Environmental Protection Act 1986*

---

Licence Number	L9157/2018/1
Licence Holder	REMONDIS Australia Pty Ltd
<b>ACN</b>	002 429 781
<b>File Number</b>	DER2018/000853
<b>Premises</b>	REMONDIS Canning Vale MRF 3 Madison Street CANNING VALE WA 6155  Legal description – Lot 2 on Diagram 67441
<b>Date of Report</b>	27 April 2022
<b>Decision</b>	Revised licence granted

**Stephen Checker**  
**MANAGER, WASTE INDUSTRIES**  
**REGULATORY SERVICES**

an officer delegated under section 20 of the *Environmental Protection Act 1986* (WA)

# Table of Contents

<b>1. Decision summary .....</b>	<b>1</b>
<b>2. Scope of assessment .....</b>	<b>1</b>
2.1 Regulatory framework .....	1
2.2 Application summary .....	1
<b>3. Risk assessment.....</b>	<b>3</b>
3.1 Source-pathways and receptors .....	3
3.1.1 Emissions and controls .....	3
3.1.2 Receptors.....	1
3.2 Risk ratings.....	4
3.3 Detailed risk assessment for noise .....	7
3.3.1 Noise emissions .....	7
<b>4. Consultation .....</b>	<b>8</b>
<b>5. Conclusion .....</b>	<b>8</b>
5.1 Summary of amendments.....	8
<b>References .....</b>	<b>12</b>
<b>Appendix 1: Application validation summary .....</b>	<b>13</b>
 Table 1: Proposed throughput changes .....	 2
Table 2: Licence Holder controls .....	1
Table 3: Sensitive human and environmental receptors and distance from prescribed activity .	1
Table 4. Risk assessment of potential emissions and discharges from the Premises during construction and operation .....	5
Table 5: Measured noise levels (Herring Storer Acoustics 2020) .....	7
Table 6: Consultation .....	8
Table 7: Consolidation of licence conditions in this amendment.....	8
 Figure 1: Distance to sensitive human receptors.....	 1
Figure 2: Distance to sensitive environmental receptors – Wetlands and reserves .....	2
Figure 3: Distance to sensitive environmental receptors – Bush forever and conservation significant ecological communities .....	3

## 1. Decision summary

Licence L9157/2018/1 is held by REMONDIS Australia Pty Ltd Licence Holder for the REMONDIS Canning Vale MRF (Premises), located at 3 Madison Street, Canning Vale. This Amendment Report documents the assessment of potential risks to the environment and public health from proposed changes to the emissions and discharges during the operation of the Premises. As a result of this assessment, Revised Licence L9157/2018/1 has been granted.

The Revised Licence issued as a result of this amendment consolidates and supersedes the existing Licence previously granted in relation to the Premises. The Revised Licence Approval has been granted in a new format with existing conditions being transferred.

## 2. Scope of assessment

### 2.1 Regulatory framework

In completing the assessment documented in this Amendment Report, the department has considered and given due regard to its Regulatory Framework and relevant policy documents which are available at <https://dwer.wa.gov.au/regulatory-documents>.

### 2.2 Application summary

On 14 September 2021, the Licence Holder submitted an application to the department to amend Licence L9157/2018/1 under section 59 and 59B of the *Environmental Protection Act 1986* (EP Act). The following amendments are being sought:

- The upgrade of the facility to receive and process up to 520 tonnes of aluminium composite panels per annual period;
- The removal of infrastructure and operational aspects associated with the premises mini materials recovery facility (MRF) from the licence, which previously included the sorting and processing (crushing) of glass and sorting and storage of recyclable waste streams; and
- The removal of the receipt and processing of waste oil filters and oil from the licence.

#### **Materials recovery facility (Area 2)**

The MRF was included on the previous licence within an undercover area consisting of concrete tilt panels and a dome roof (Area 2). The equipment associated with the MRF has been decommissioned and removed from the Premises by the licence holder. This includes 2x sorting platforms, 9x conveyors, 3x desk rotating disc screens, 1x steel magnet and 1x bouncer conveyor. The licence holder has applied through this amendment to remove these operational aspects from the amended licence.

#### **Waste oil filters (Area 3)**

Waste oil filters are accepted and crushed on-site, in the same shed as the product destruction area. This is only a minor activity on the Premises, with approximately one x 1 m<sup>3</sup> bin of waste oil filters processed every 2 weeks. The equipment associated with waste oil filters has been decommissioned and removed from the Premises by the licence holder. The licence holder has applied through this amendment to remove this operational aspect from the amended licence.

#### **Aluminium composite panel processing (Area 2)**

The aluminium composite panel processing will be located within the western area of the site (Area 2) in the undercover dome area where the MRF was previously located. The total area required for this activity is approximately 400 m<sup>2</sup>. The processing area will comprise 3x conveyors, 1x shredder, 1x magnet, 1x crusher, 1x electrostatic separators, 1x dust removal

system. The Premises also utilises 2x front end loaders, 1x telehandler and 4x forklifts which have a shared responsibility for processing across all areas of the Premises. Aluminium composite panel processing will be conducted between 7am and 3pm Monday to Friday.

Aluminium composite panels will be received as flat panels on a daily basis and into the dedicated undercover dome area until it is ready to be processed. The equipment is designed to process 250-300 kilograms per hour, with an expected throughout 10 tonnes per week and up to 520 tonnes per annual period. If the need arises, processing may be increased to approximately 20 tonnes per week or 1,040 tonnes per annual period, assuming processing is conducted over two shifts between Monday to Friday.

The aluminium composite panels will be loaded onto the conveyor by hand and then pass through a shredder to reduce the size. The material will then be deposited on the next conveyor and pass under a belt magnet to remove any ferrous materials (such as rivets) if present. A hammer crusher will be used to breakdown the size of the material to approximately 8-10 mm. The material will then pass through an air conveyor to draw up the small particles for further grinding to approximately 1-2 mm. A water-cooled air condition grinding unit will reduce the heat on the plastic component of the material. After grinding, the material will pass through an electrostatic separator (eddy current) to separate the aluminium from the plastic. A dust removal system will be used before the separated materials are deposited into bulker bags and sealed. The sealed bulker bags will be stored within the aluminium composite panel processing area (Area 2) in preparation to be loaded into shipping containers or semi-trailers for export or local sales.

Major modifications to the existing site are not required as the areas planned for this equipment in already vacant. The equipment will be installed in the undercover dome on a concrete pad. The processing equipment will be delivered to site in two shipping containers. The equipment components are relatively small and will be put in place using a forklift. Equipment installation works will be completed by an experienced contractor and licensed electrician to complete the wiring of the equipment and the commissioning. Installation is expected to take one week.

Table 1 below outlines the proposed changes to the existing Licence.

**Table 1: Proposed throughput changes**

Category	Current throughput capacity	Proposed throughput capacity	Description of proposed amendment
61A	2,000 tonnes period annual period	6,000 tonnes period annual period	The Licence Holder proposes to receive, process and temporarily store up to 520 tonnes of aluminium composite panels per annual period.  Material recovered from product destruction operations was incorrectly included under Category 62 of the previous licence, instead of Category 61A. These two operations will result in a maximum production capacity of up to 6,000 tonnes per annum.
61	30,000 tonnes per annual period	No change proposed	No change proposed

Category	Current throughput capacity	Proposed throughput capacity	Description of proposed amendment
62	113,400 tonnes per annual period	106,120 tonnes	Combined Inert Waste Type 1 / Inert Waste Type 2 / Putrescible throughput reduced from 113,400 tonnes to 106,120 tonnes due to the removal of the MRF and co-mingled materials no longer being received at the premises

As part of this Licence amendment the department has updated the Licence by reviewing and reformatting the Licence conditions, correcting errors, and removing conditions which are no longer valid. The updates to the Licence initiated by the department are:

- updated the format and appearance of the licence;
- revised licence condition's numbers, and removed any redundant conditions and realigned condition numbers for numerical consistency;
- updating and inclusion of definitions; and
- updating the waste types and prescribed premises categories. Materials covered from product destruction (Area 5) was incorrectly included under Category 62 of the previous licence. The error has been amended and the product is included under Category 61A of the amended licence. Waste types and specifications have been corrected.

The full consolidation of licence conditions as they relate to this Revised Licence are detailed in Section 5.1.

### 3. Risk assessment

The department assesses the risks of emissions from prescribed premises and identifies the potential source, pathway and impact to receptors in accordance with the *Guideline: Risk assessments* (DWER 2020).

To establish a Risk Event there must be an emission, a receptor which may be exposed to that emission through an identified actual or likely pathway, and a potential adverse effect to the receptor from exposure to that emission.

#### 3.1 Source-pathways and receptors

##### 3.1.1 Emissions and controls

The key emissions and associated actual or likely pathway during Premises construction and operation which have been considered in this Amendment Report are detailed in Table 2 below. Table 2 also details the proposed control measures the Licence Holder has proposed to assist in controlling these emissions, where necessary.

**Table 2: Licence Holder controls**

Emission	Sources	Potential pathways	Proposed controls
Dust	Installation/placement of new aluminium composite panel processing equipment using a forklift.	Air/windborne pathway	No controls proposed for this amendment in relation to construction dust and noise.
Noise			
Noise	Waste acceptance and processing: Separation, shredding, sorting, crushing, water cooled air condition grading, electrostatic separation of material, dust removal, bagging, storage and loading for sale.	Air/windborne pathway	Processing to occur within enclosed building  Noise assessment to be conducted for new equipment once installed.
Dust			Processing to occur within enclosed building  A dust extraction system is to be positioned over the aluminium composite panel processing conveyors. Dust will be contained in small, sealed bags and disposed of on a weekly basis.
Fire (smoke, ash, and debris)	Uncontrolled fire at premises	Air/windborne pathway	Existing fire management provisions as detailed in current licence
Firefighting washwaters and contaminated runoff		overland flow, stormwater network and seepage through soil profile	The entire premises is covered in bitumen hardstand, with all surface water runoff directed to blind collection sumps that are not connected to the external stormwater system.

### 3.1.2 Receptors

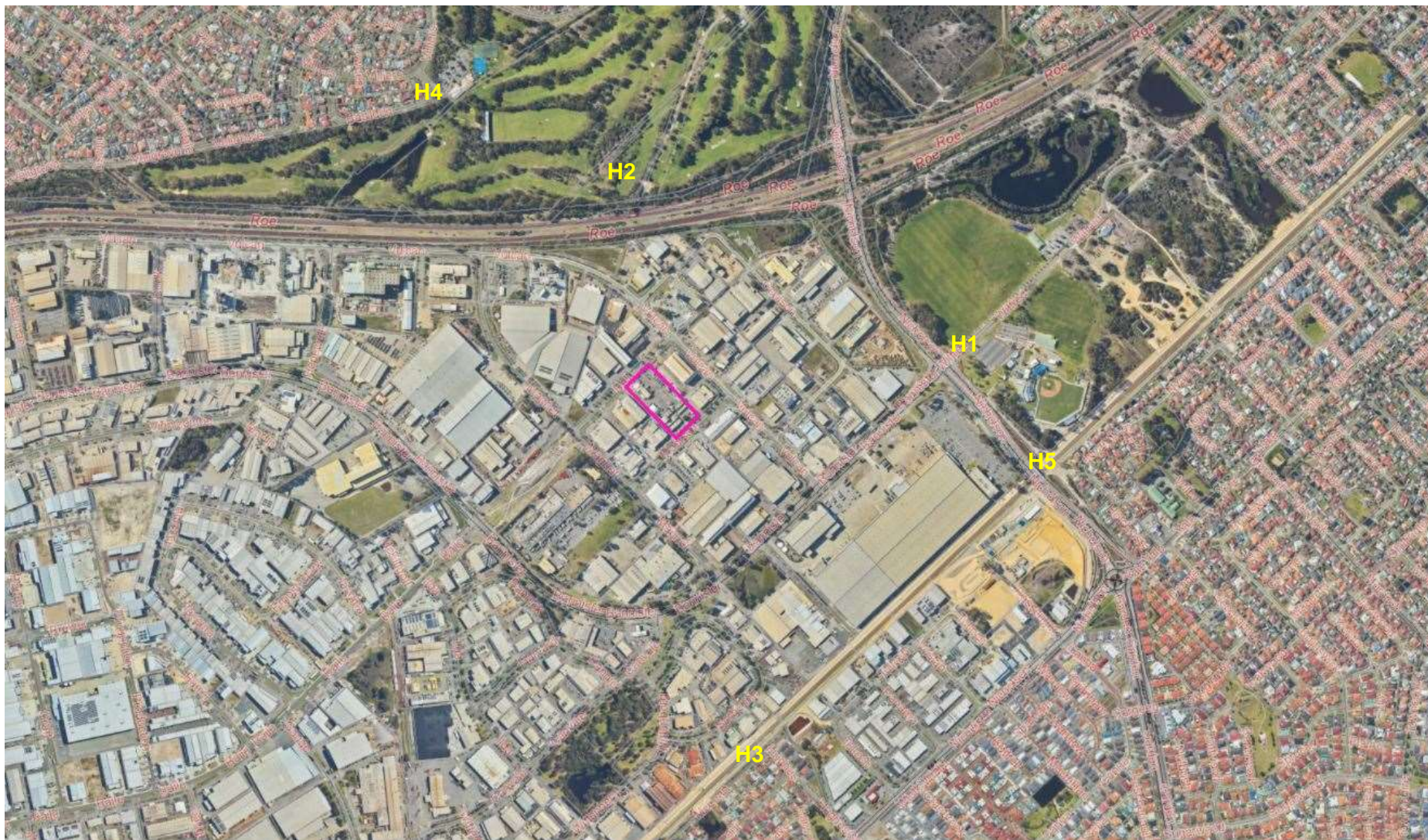
In accordance with the *Guideline: Risk assessments* (DWER 2020), the Delegated Officer has excluded employees, visitors and contractors of the Licence Holder's from its assessment. Protection of these parties often involves different exposure risks and prevention strategies, and is provided for under other state legislation.

Table 3 below provides a summary of potential human and environmental receptors that may be impacted as a result of activities upon or emission and discharges from the prescribed premises (*Guideline: Environmental siting* (DWER 2020)).

**Table 3: Sensitive human and environmental receptors and distance from prescribed activity**

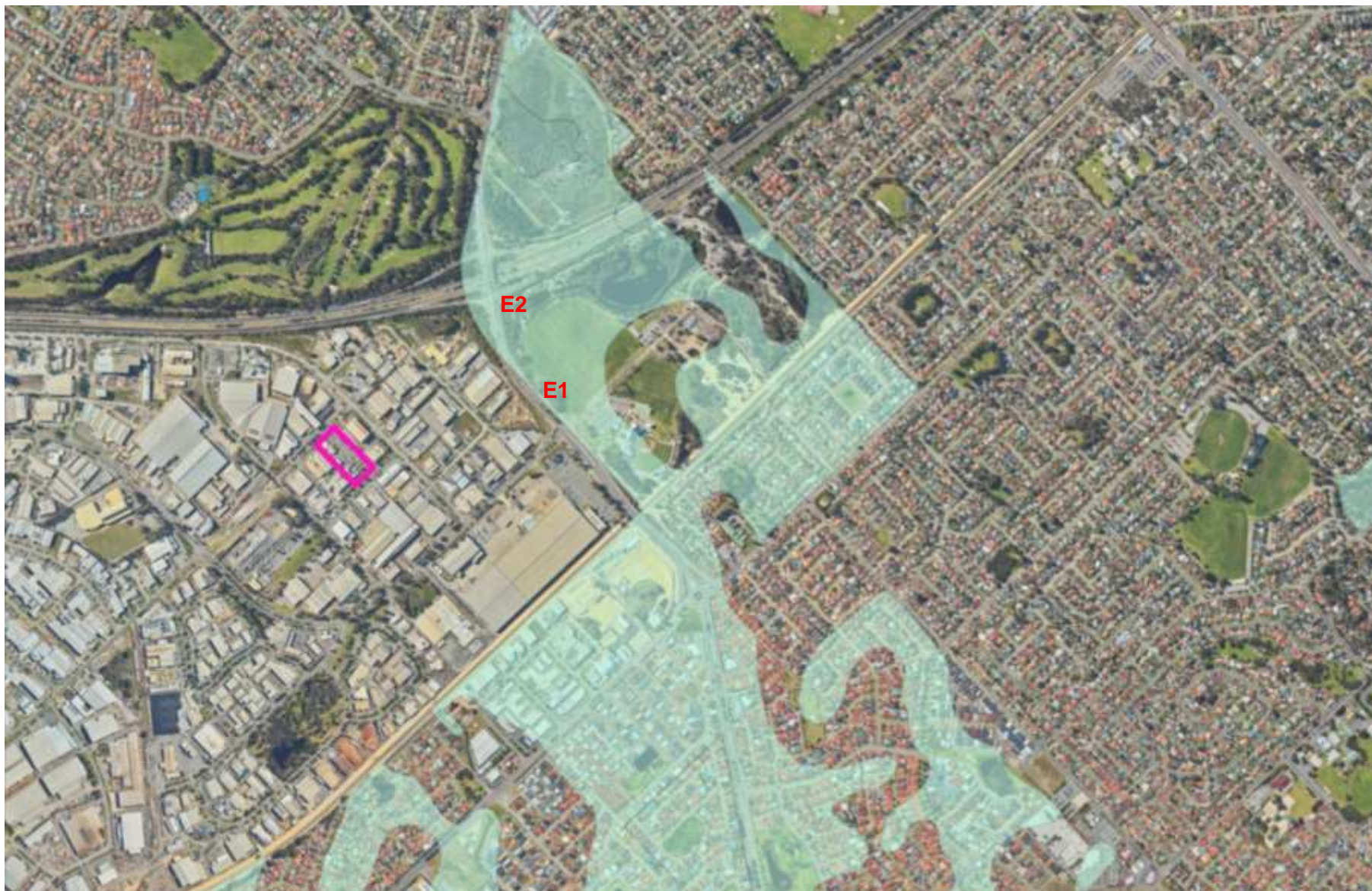
Receptor ID	Human receptors	Distance from prescribed activity
H1	Recreational area - Tom Bateman Sporting Complex Reserve	Approximately 750 m north-east (Figure 1)
H2	Recreational area - Whaleback Golf Course	Approximately 380 m north from the Premises boundary (Figure 1)
H3	Residential premises – Hughes Street, Canning Vale.	Approximately 720 m south of eastern Premises boundary (Figure 1)
H4	Residential premises – Basildon Way, Parkwood	Approximately 815 m north-west of northern Premises boundary (Figure 1)
H5	Residential premises – Nyandi Court, Thornlie	Approximately 850 m south-east of eastern Premises boundary (Figure 1)
H6	Industrial and service commercial businesses.	The premises is located immediately adjacent to industrial units and within an industrial area. The nearest café located approximately 480 m south-south-west from the premises boundary.
Receptor ID	Environmental receptors	Distance from prescribed activity
E1	Wetlands - Multiple use (dampland) Geomorphic wetland of the Swan Coastal Plain (SCP)	Approximately 500 m north-east from the eastern Premises boundary (Figure 2)
E2	Tom Bateman Reserve and wetlands	Approximately 750 north-east from the eastern Premises boundary (Figure 2)
E3	Bush Forever Area (Site 456)	Approximately 550 m east from the eastern Premises boundary (Figure 3)
E4	Threatened and priority ecological communities	Banksia Woodland of the SCP (Priority 3) and mapped approximately 820 m south-east from the application area (Figure 3)
E5	Public drinking water source area - Jandakot Underground Water Pollution Control Area (Priority 1)	Approximately 4.2 km south-west from the Premises boundary.
E6	Groundwater and water sources	The natural ground level is 19 mAHD and the surface of the aquifer is approximately 15.8 mAHD, being 3.3 m below ground level.





**Figure 1: Distance to sensitive human receptors**





**Figure 2: Distance to sensitive environmental receptors – Wetlands and reserves**





**Figure 3: Distance to sensitive environmental receptors – Bush forever and conservation significant ecological communities**

## 3.2 Risk ratings

Risk ratings have been assessed in accordance with the *Guideline: Risk Assessments* (DWER 2020) for those emission sources which are proposed to change and takes into account potential source-pathway and receptor linkages as identified in Section 3.1. Where linkages are incomplete they have not been considered further in the risk assessment.

Where the Licence Holder has proposed mitigation measures/controls (as detailed in Section 3.1), these have been considered when determining the final risk rating. Where the Delegated Officer considers the Licence Holder's proposed controls to be critical to maintaining an acceptable level of risk, these will be incorporated into the licence as regulatory controls.

Additional regulatory controls may be imposed where the Licence Holder's controls are not deemed sufficient. Where this is the case the need for additional controls will be documented and justified in Table 4.

The Revised Licence L9157/2018/1 that accompanies this Amendment Report authorises emissions associated with the operation of the Premises.

The conditions in the Revised Licence have been determined in accordance with *Guidance Statement: Setting Conditions* (DER 2015).

**Table 4. Risk assessment of potential emissions and discharges from the Premises during construction and operation**

Risk events					Risk rating <sup>1</sup> C = consequence L = likelihood	Applicant controls sufficient?	Conditions <sup>2</sup> of licence	Justification for additional regulatory controls
Sources / activities	Potential emission	Potential pathways and impact	Receptors	Applicant controls				
Construction								
Installation of new aluminium composite panel processing equipment in undercover dome on a concrete pad. This will require a forklift to put in place. Vehicle movements (reversing beepers), removal of infrastructure. Commissioning of new plant will require wiring by contractor / electrician. Construction is expected to take approximately 1 week.	Noise	Air / windborne pathway causing impacts to health and amenity	Residences 815 m north-west and 720 m south-east.  Adjacent industrial and commercial premises.  Threatened fauna – nearest record is 740 m north-west.	N/A	C: Minor L: Possible <b>Medium Risk</b>	Y	Condition 1 stipulates infrastructure locations	N/A
Operation								
Waste acceptance and processing: Separation, shredding, sorting, crushing, water cooled air condition grading, electrostatic separation (eddy current) of material. Dust removal, bagging and loading.	Dust	Air / windborne pathway causing impacts to health and amenity	Residences 815 m north-west and 720 m south-east.  Adjacent industrial and commercial premises.	Refer to Section 3.1	C: Minor	Y	Condition 1, Table 1 requires installation of dust removal system	N/A
	Noise		Threatened fauna – nearest record is 740 m north-west.	Refer to Section 3.1	L: Possible <b>Medium Risk</b>	N	<b><u>Condition 10 – Specified Actions</u></b>  <b><u>Table 7: SA2 – Noise Assessment.</u></b>	Noise verification required post installation of new processing equipment to ensure compliance with Noise Regulations



Risk events					Risk rating <sup>1</sup>  C = consequence L = likelihood	Applicant controls sufficient?	Conditions <sup>2</sup> of licence	Justification for additional regulatory controls
Sources / activities	Potential emission	Potential pathways and impact	Receptors	Applicant controls				
	Uncontrolled Fire (smoke)	Air/wind dispersion resulting in human health impacts (smoke inhalation, noxious particulates)	Adjacent industrial and commercial premises	Refer to Section 3.1	C: Moderate L: Possible <b>Medium Risk</b>	Y	Condition 7 outlines minimum required fire controls  Condition 10, table 7 required the preparation of an updated FMP for the premises.	N/A
	Firefighting washwaters and contaminated runoff	Overland flow, stormwater network and infiltration to soil resulting in potential impacts to groundwater users and impacts on the biological diversity and ecosystem function of wetlands	Groundwater and nearby wetlands	Refer to Section 3.1	C: Slight L: Unlikely <b>Low Risk</b>	Y		N/A

Note 1: Consequence ratings, likelihood ratings and risk descriptions are detailed in the *Guideline: Risk assessments* (DWER 2020).

Note 2: Proposed Licence Holder's controls are depicted by standard text. **Bold and underline text** depicts additional regulatory controls imposed by department.

## 3.3 Detailed risk assessment for noise

### 3.3.1 Noise emissions

A decision to grant an amendment to L9157/2018/1 was issued in June 2020 to allow flexibility to upgrade facility to the Container Deposit Scheme (CDS). Condition 9 Specified Action 2 (SA2) of the licence comprises noise assessment requirements for the licence holder to undertake a noise monitoring survey to demonstrate the noise levels from operations comply with *Environmental Protection (Noise) Regulations 1997* (Noise Regulations) at the Premises boundary. The licence holder submitted Herring Storer Acoustics (2020) *Remondis Canning Vale Boundary Noise Survey* in October 2020. The noise report was submitted as required by Condition 9 SA2 of the licence.

The Herring Storer Acoustic (2020) report was prepared to demonstrate noise levels at the Premises boundary and provide reference noise level measurements for comparison to future assessments. Noise monitoring was conducted at the perimeter Premises boundary on the 19 October 2020. The plant was operating under normal conditions. Whilst carrying out noise measurements, observations were made as to the source of the noise, being either generated by the site operations or by other sources in the surrounding area (Herring Storer Acoustics 2020). Table 5 provides a summary of measured noise levels.

**Table 5: Measured noise levels (Herring Storer Acoustics 2020)**

Location	Measured LA10 Noise Level	Comments
1	61	Remondis operations, forklifts, loaders operating. Barrier to neighbour.
2	56	Remondis operations, forklifts, loaders operating. Barrier to neighbour
3	51	Remondis operations, barriered by office, some influence from adjacent industrial premises. No barrier to neighbour.
4	52	Remondis operations, barriered by office, some influence from adjacent industrial premises. No barrier to neighbour.
5	64	Remondis operations, bailers, roller door open, barrier to neighbour.
6	65	Remondis operations, bailers, loader, trucks idling on weighbridge, limited barrier to neighbour.
7	72(77) *	Remondis operations, dominated by bailing operations. No barrier to neighbour. calculated at industrial premises across road at 54 (59)* dB(A).

\*Bracketed number for tonality

Herring Storer Acoustic's (2020) noise report included the measurement of sound pressure levels of mobile and fixed equipment; measuring the noise emission levels at the boundary of the subject lot and assessing the compliance with the Noise Regulations. The report indicated that the facility complies with the Noise Regulations. However, the report also noted a potential for non-compliance where product is dropped into the baler, should this emission be found to be tonal and impulsive (DWER 2022). The report does not formally assess whether tonality and impulsiveness are present. As such, there is uncertainty as to whether the projected noise emissions comply with the Noise Regulations (DWER 2022).

The current licence amendment application proposes the inclusion of aluminium composite panel processing which will require changes to infrastructure and equipment, including new conveyors, a shredder, crushers and a dust removal system. The amendment also comprises the removal of MRF and waste oil equipment and operations at the Premises. These

amendments have not been assessed in the Herring Storer Acoustic (2020) report given it predates the licence amendment application. The applicant noted in the amendment application that noise from the aluminium composite panel processing is expected to be less than 85 dB(A). However, manufacturer documentation to support this statement was not provided. Therefore, there is a risk future noise emissions from the facility may not comply with the Noise Regulations at nearby receivers (DWER 2022). An acoustic report has not been submitted to support the amendments proposed. It is noted that the proposed changes to equipment use may vary the noise outputs modelled in the previous noise surveys.

To mitigate the noise emission risks outlined above condition 9 SA2 should be retained on the licence, which requires that noise monitoring is undertaken within 3 months of the facility starting the new activity and the noise levels compared with the noise modelling report (DWER 2022). An updated noise assessment should be prepared that considers the layout and equipment proposed under the L9157/2020/1 licence amendment, preferably comprising noise modelling, and assessment against the  $L_{A1}$ ,  $L_{A10}$  and  $L_{Amax}$  assigned noise levels (DWER 2022).

## 4. Consultation

Table 6 provides a summary of the consultation undertaken by the department.

**Table 6: Consultation**

Consultation method	Comments received	Department response
City of Canning advised of proposal on 10 January 2022	None received	n/a
Applicant was provided with draft documents on 10 March 2022	<i>"no objections to the amendments that have been made"</i>	Noted

## 5. Conclusion

Based on the assessment in this Amendment Report, the Delegated Officer has determined that a Revised Licence will be granted, subject to conditions commensurate with the determined controls and necessary for administration and reporting requirements.

### 5.1 Summary of amendments

Table 7 provides a summary of the proposed amendments and will act as record of implemented changes. All proposed changes have been incorporated into the Revised Licence as part of the amendment process.

**Table 7: Consolidation of licence conditions in this amendment**

Existing condition	Condition summary	Revised licence condition	Conversion notes
N/A	N/A - Explanatory notes	N/A - Explanatory notes removed	Redundant condition. Revised to current licensing format.
N/A Table 1	Interpretation and definitions and Table 1	N/A - Interpretation section, Definitions and Table 8	Definitions moved to Table 8 and interpretation text revised. Section revised to current licensing format.  Licence conditions and text revised to current licensing format.

Existing condition	Condition summary	Revised licence condition	Conversion notes
Conditions	Conditions	Licence Conditions	Licence conditions and text revised to current licensing format.
N/A Schedule 2	Schedule : Primary activities Infrastructure and equipment and Table 9	Infrastructure and equipment moved to condition 1 and table 1.	New numbering and update to wording format Licence conditions and text revised to current licensing format.
Condition 1 Table 1	Infrastructure and equipment	Condition 1, Table 1	MRF facility and vertical press removed from site infrastructure and equipment (Area 2). Vertical press (used oil filters) removed (Area 3). Aluminium composite panel processing (area 2) included.
Condition 1 Table 2	Emissions, Table 2	Amended to condition 2.	New numbering and update to wording format No change to condition or table text required.
Condition 2 Table 3	Waste acceptance and management Table 3	Amended to condition 3.	Revised to current licensing format. Change to condition numbering
Condition 2 Table 3	Waste acceptance and management, Table 3	Condition 3, Table 3	Putrescible and inert waste throughputs reduced from 113,400 tonnes to 106,120 tonnes due to the removal of the MRF, and commingled materials no longer being received at the premises Inert waste types 1 and 2 amended to specify that materials are source separated (no sorting required) and directed to holdings bays ready for baling
Condition 2 Table 3	Waste acceptance and management, Table 3	Condition 3, Table 3	Up to 520 tonnes per year of aluminium composite panels processing included. Aluminium composite panels only. Must be directed to Area 2 for temporary pre-processing storage, processing, temporary storage in bulka bags prior to loading.
Condition 2 Table 3	Waste acceptance and management Condition 2 Table 3	Condition 3, Table 3	Liquid waste type amended to remove used oil filters that may contain small volumes of free liquid.
Condition 3	Waste acceptance and management Condition 3	Condition 4	New numbering
Condition 4 Table 4	Waste acceptance and management Condition 4	Condition 5 Table 4 waste processing table	New numbering.



Existing condition	Condition summary	Revised licence condition	Conversion notes
	Table 4 waste processing table		
Condition 4 Table 4	Waste acceptance and management Condition 4, Table 4 waste processing table	Condition 5 Table 4 waste processing table	Inert waste types 1 and 2 amended to remove sorting and processing (crushing). The crushing and screening of glass via a rotating screen deck with a 50 mm punch plate removed.
Condition 4 Table 4	Waste acceptance and management Condition 4, Table 4 waste processing table	Condition 5 Table 4 waste processing table	Liquid waste – used oil filters removed from waste processing table.
Condition 5 Table 5	Containment infrastructure Condition 5	Condition 6, containment infrastructure.	New numbering.
Condition 5 Table 5	Containment infrastructure Condition 5	Condition 6, containment infrastructure.	Vessel or compound column amended to remove 1,000 litre Intermediate Bulk Container(s) for waste mineral oil material.
Condition 6	Fire controls Condition 6	Condition 7, fire controls	New numbering.
Condition 7	Windblown waste Condition 7	Condition 8, windblown waste	New numbering.
Condition 8 Table 6	Monitoring Condition 8 Table 6, waste accepted at the Premises	Condition 9, monitoring Table 6, waste accepted at the Premises	New numbering.
Condition 8 Table 6	Monitoring Condition 8 Table 6, waste accepted at the Premises	Condition 9, monitoring Table 6, waste accepted at the Premises	Waste material column amended to remove waste oil filters under inert waste type 1 and used oil filters under liquid waste. Aluminium composite panels (aluminium, plastic) included.
Condition 9	Specified actions Condition 9 Table 7, specified actions	Condition 10, specified actions Table 7, specified actions	New numbering.
Condition 9	Specified actions Condition 9, Table 7, specified actions	Condition 10, specified actions Table 7, specified actions SA1	DFES amended to Department of Fire and Emergency Services.
Condition 10	Record-keeping Condition 10	Records and reporting	New numbering and update to wording format.

Existing condition	Condition summary	Revised licence condition	Conversion notes
Schedule 1: Maps	Schedule 1: Maps Premises map	Schedule 1: Maps Premises map	New naming convention, no change to map.
Schedule 1: Maps	Schedule 1: Maps Site Layout	Schedule 1: Maps Site Layout	Maps for existing operations and proposed change to operations updated to reflect existing and proposed amendments to site.

## References

1. Department of Environment Regulation (DER) 2015, *Guidance Statement: Setting Conditions*, Perth, Western Australia.
2. Department of Water and Environmental Regulation (DWER) 2020, *Guideline: Environmental Siting*, Perth, Western Australia.
3. DWER 2020, *Guideline: Risk Assessments*, Perth, Western Australia.
4. DWER 2022, *Memorandum: Remondis Australia Pty Ltd (Remondis) – L9157/2020/1 – Licence amendment application for the proposed inclusion of Aluminium Composite Panel reprocessing at Lot 2 on Diagram 67441 (3 Madison Street), Canning Vale - DWER technical noise review (DER2018/000853-1)*, dated 19 January 2022.
5. Herring Storer Acoustic 2020, *Remondis Canning Vale Boundary Noise Survey Measured: October 2020* prepared by Herring Storer Acoustics for Remondis.

## Appendix 1: Application validation summary

SECTION 1: APPLICATION SUMMARY					
<b>Application type</b>					
Works approval	<input type="checkbox"/>				
Licence	<input type="checkbox"/>	Relevant works approval number:		None	<input type="checkbox"/>
		Has the works approval been complied with?			Yes <input type="checkbox"/> No <input type="checkbox"/>
		Has time limited operations under the works approval demonstrated acceptable operations?			Yes <input type="checkbox"/> No <input type="checkbox"/> N/A <input type="checkbox"/>
		Environmental Compliance Report submitted?			Yes <input type="checkbox"/> No <input type="checkbox"/>
		Date Report received:			
Renewal	<input type="checkbox"/>	Current licence number:			
Amendment to works approval	<input type="checkbox"/>	Current works approval number:			
Amendment to licence	<input checked="" type="checkbox"/>	Current licence number:	L9157/2018/1		
		Relevant works approval number:		N/A	<input checked="" type="checkbox"/>
Registration	<input type="checkbox"/>	Current works approval number:		None	<input type="checkbox"/>
Date application received		14 September 2021			
<b>Applicant and Premises details</b>					
Applicant name/s (full legal name/s)		Remondis Australia Pty Ltd			
Premises name		Remondis Australia Pty Ltd Canning Vale MRF			
Premises location		<ul style="list-style-type: none"> <li>2 Madison Street Canning Vale, WA, 6155</li> <li>Lot 2 on Diagram 67441</li> </ul>			
Local Government Authority		City of Canning			
<b>Application documents</b>					
HPCM file reference number:		<ul style="list-style-type: none"> <li>Application submission number: DWERDT504022</li> <li>Licence folder number: DER2018/000853-1</li> </ul>			
Key application documents (additional to application form):		<ul style="list-style-type: none"> <li>Attachment 2 – Premises Map</li> <li>Attachment 3A – Proposed activities</li> <li>Attachment 6A – Emissions and discharges</li> <li>Attachment 6B – Waste acceptance table</li> <li>Attachment 7 – Siting and location.</li> </ul>			
<b>Scope of application/assessment</b>					



<p>Summary of proposed activities or changes to existing operations.</p>	<p><b><u>Proposed additional activities:</u></b></p> <p>Operation of aluminium composite panel processing. The application proposes to amend the licence to include the receipt and processing of aluminium composite paneling being removed from buildings offsite. Site changes include:</p> <ul style="list-style-type: none"> <li>• decommissioning and removal of sorting conveyors; and</li> <li>• installation of processing equipment to separate aluminium from plastics recycling.</li> </ul> <p>Material will be delivered in flat pieces ready for processing. Following processing / separation, the material will be stored in bulk bags within the same area (Area 1 9a)). Material will be stored where the MRF was previously located (undercover). Key aluminium composite panel infrastructure is proposed to include:</p> <ul style="list-style-type: none"> <li>- 3 conveyors, 1 shredder, 1 magnet, 1 crusher, 1 electrostatic separator, 1 dust removal system.</li> <li>- The site also utilises 2 front end loaders, 1 telehandler, 4 forklifts which have shared responsibility for processing in all areas of the site.</li> </ul> <p><b><u>Proposed activities to be removed:</u></b></p> <ul style="list-style-type: none"> <li>- Removal of MRF (see page 24 of Licence Amendment Application 1 of 2).</li> <li>- Removal of oil filters and Waste oil Collection (see page 24 of Licence Amendment Application 2 of 2).</li> </ul> <p>Note that the MRF has already been decommissioned and removed.</p>
--------------------------------------------------------------------------	-----------------------------------------------------------------------------------------------------------------------------------------------------------------------------------------------------------------------------------------------------------------------------------------------------------------------------------------------------------------------------------------------------------------------------------------------------------------------------------------------------------------------------------------------------------------------------------------------------------------------------------------------------------------------------------------------------------------------------------------------------------------------------------------------------------------------------------------------------------------------------------------------------------------------------------------------------------------------------------------------------------------------------------------------------------------------------------------------------------------------------------------------------------------------------------------------------------------------------------------------------------------------------------------------------------------------------------------------------------------------------------------------------------------------------------------------------------------------------------------------------------------------------------------

**Category number/s (activities that cause the premises to become prescribed premises)**

**Table 1: Prescribed premises categories**

<b>Prescribed premises category and description</b>	<b>Assessed production or design capacity</b>	<b>Proposed changes to the production or design capacity (amendments only)</b>
<p>Category 62: Solid waste depot</p> <p>Solid waste depot: premises on which waste is stored, or sorted, pending final disposal or-reuse.</p>	<p><i>Proposed – No amendments or new activities proposed.</i></p> <p><i>Assessed - 113,400 tonnes per annual period.</i></p>	<p><i>No amendments or new activities proposed.</i></p> <p><i>Note that the material recovered from product destruction operations was incorrectly included in Category 62 under the previous licence. This licence amendment proposed to correctly capture this material under Category 61A.</i></p>
<p>Category 61: Liquid waste facility</p> <p>Liquid waste facility: premises on which liquid waste produced on other premises (other than sewerage waste) is stored, reprocessed, treated or irrigated.</p>	<p><i>Proposed – No amendments or new activities proposed.</i></p> <p><i>Assessed - 30,000 tonnes per annual period</i></p>	<p><i>No amendments or new activities proposed.</i></p>
<p>Category 61A: Solid waste facility</p> <p>Solid waste facility: premises (other than premises within Category 67A) on which solid waste is produced on other premises is stored, reprocessed, treated, or discharged onto land.</p>	<p><i>Proposed – for new activities as specified in the application.</i></p> <p><i>Assessed – 6,000 tonnes per annual period.</i></p>	<p><i>Note that the material recovered from product destruction operations was incorrectly included in Category 62 under the previous licence. This licence amendment proposed to correctly capture this material under Category 61A.</i></p> <p><i>REMONDIS Australia Pty Ltd estimates 520 tonnes / annum (10 tonnes / week) of aluminium composite panels and 1,500 tonnes of materials recovered from product destruction. However, the facility does have the capacity to process more if volume if available. The design capacity of these two operations will result in a maximum of approximately 6,000 tonnes per annum.</i></p> <p><i>The proposed amendment will require an increase to the assessed premises production and design capacity under Category 61A.</i></p>

**Legislative context and other approvals**

Has the applicant referred, or do they intend to refer, their proposal to the EPA under Part IV of the EP Act as a significant proposal?	Yes <input type="checkbox"/> No <input checked="" type="checkbox"/>	Referral decision No: Managed under Part V <input type="checkbox"/> Assessed under Part IV <input type="checkbox"/>
Does the applicant hold any existing Part IV Ministerial Statements relevant to the application?	Yes <input type="checkbox"/> No <input checked="" type="checkbox"/>	Ministerial statement No: EPA Report No:
Has the proposal been referred and/or assessed under the EPBC Act?	Yes <input type="checkbox"/> No <input checked="" type="checkbox"/>	Reference No:
Has the applicant demonstrated occupancy (proof of occupier status)?	Yes <input checked="" type="checkbox"/> No <input type="checkbox"/>	Certificate of title <input type="checkbox"/> General lease <input type="checkbox"/> Expiry: Mining lease / tenement <input type="checkbox"/> Expiry: Other evidence <input type="checkbox"/> Expiry:
Has the applicant obtained all relevant planning approvals?	Yes <input type="checkbox"/> No <input type="checkbox"/> N/A <input checked="" type="checkbox"/>	Approval: Expiry date: If N/A explain why? <i>The proposed amendment for aluminium composite panel processing is not likely to require additional planning approvals.</i>
Has the applicant applied for, or have an existing EP Act clearing permit in relation to this proposal?	Yes <input type="checkbox"/> No <input checked="" type="checkbox"/>	CPS No: N/A No clearing is proposed.
Has the applicant applied for, or have an existing CAWS Act clearing licence in relation to this proposal?	Yes <input type="checkbox"/> No <input checked="" type="checkbox"/>	Application reference No: N/A Licence/permit No: N/A No clearing is proposed.
Has the applicant applied for, or have an existing RIWI Act licence or permit in relation to this proposal?	Yes <input type="checkbox"/> No <input checked="" type="checkbox"/>	Application reference No: Licence/permit No: Licence / permit not required.
Does the proposal involve a discharge of waste into a designated area (as defined in section 57 of the EP Act)?	Yes <input type="checkbox"/> No <input checked="" type="checkbox"/>	Name: Perth Groundwater Area Type: Proclaimed as 'to be developed' under the RIWI Act. No Discharges to the groundwater expected as part of the proposed amendment activity. Has Regulatory Services (Water) been consulted? Yes <input type="checkbox"/> No <input checked="" type="checkbox"/> N/A <input type="checkbox"/> Regional office: Swan Avon
Is the Premises situated in a Public Drinking Water Source Area (PDWSA)?	Yes <input type="checkbox"/> No <input checked="" type="checkbox"/>	Name: N/A

		Priority: N/A Are the proposed activities/ landuse compatible with the PDWSA (refer to <a href="#">WQPN 25</a> )? Yes <input type="checkbox"/> No <input type="checkbox"/> N/A <input checked="" type="checkbox"/>
Is the Premises subject to any other Acts or subsidiary regulations (e.g. <i>Dangerous Goods Safety Act 2004, Environmental Protection (Controlled Waste) Regulations 2004, State Agreement Act xxxx</i> )	Yes <input type="checkbox"/> No <input checked="" type="checkbox"/>	N/A
Is the Premises within an Environmental Protection Policy (EPP) Area?	Yes <input type="checkbox"/> No <input checked="" type="checkbox"/>	N/A
Is the Premises subject to any EPP requirements?	Yes <input type="checkbox"/> No <input checked="" type="checkbox"/>	N/A
Is the Premises a known or suspected contaminated site under the <i>Contaminated Sites Act 2003</i> ?	Yes <input type="checkbox"/> No <input checked="" type="checkbox"/>	Classification: N/A Date of classification: N/A