



## Application for Licence

### Part V Division 3 of the *Environmental Protection Act 1986*

---

<b>Choose an item.</b>	L9325/2022/1
<b>Applicant</b>	CPB Contractors Pty Limited
<b>ACN</b>	000 893 667
<b>File number</b>	DER2021/000661
<b>Premises</b>	Yanchep Rail Extension – Alkimos sand screening  Legal description Lot 2, Plan P419385, Land ID 30029571  As defined by the premises maps attached to the issued licence
<b>Date of report</b>	12 May 2022
<b>Proposed Decision</b>	Licence granted

**MANAGER, RESOURCE INDUSTRIES  
REGULATORY SERVICES**

an officer delegated under section 20 of the *Environmental Protection Act 1986* (WA)

# Table of Contents

<b>1. Decision summary</b>	<b>1</b>
<b>2. Scope of assessment</b>	<b>1</b>
2.1 Regulatory framework	1
2.2 Overview of Project	1
2.3 Application summary and overview of premises	1
<b>3. Risk assessment</b>	<b>2</b>
3.1 Source-pathways and receptors	2
3.1.1 Emissions and controls	2
3.1.2 Receptors	4
3.1.3 P3 – Perth Coastal and Gwelup Underground Water Pollution Control Area – change to premises area	4
3.2 Risk ratings	7
3.3 Detailed risk assessment – Noise emissions	10
3.3.1 Overview of risk assessment	10
3.3.2 DWER determination	11
<b>4. Consultation</b>	<b>12</b>
<b>5. Conclusion</b>	<b>14</b>
<b>References</b>	<b>14</b>
<b>Appendix 2: Application validation summary</b>	<b>15</b>
Table 1: Proposed applicant controls	2
Table 2: Consultation	12
Figure 1: Premises map with well head protection zone	5
Figure 2: Distance to sensitive receptors	6
Figure 3: Far-field measurement locations	11

## 1. Decision summary

This decision report documents the assessment of potential risks to the environment and public health from emissions and discharges during the operation of the premises. As a result of this assessment, licence L9325/2022/1 has been granted.

## 2. Scope of assessment

### 2.1 Regulatory framework

In completing the assessment documented in this decision report, the Department of Water and Environmental Regulation (the department; DWER) has considered and given due regard to its regulatory framework and relevant policy documents which are available at <https://dwer.wa.gov.au/regulatory-documents>.

### 2.2 Overview of Project

The Yanchep Rail Extension (YRE Project) is an extension to the northern suburbs railway (also known as Joondalup line) in Perth's northern suburbs. The YRE Project includes 14.5 km of railway beyond the existing Butler Station and three new stations at Alkimos, Eglinton and Yanchep.

The subsurface conditions along the YRE route predominately comprise Safety Bay Sand and/or Tamala Sand, overlying Tamala Limestone. The subgrade conditions at the design base of the formation level comprise limestone or sand. The design of the YRE project required a considerable volume of this material to be cut from existing ground levels. In some instances, cutting passes through large and high sand dunes, with the depth of the cutting approximately 20 m from the surrounding ground level at its deepest.

A contract condition requires that the applicant reuse material extracted from the rail alignment in permanent and temporary construction works associated with the project. The applicant is therefore seeking approval to screen sand extracted from the YRE project rail corridor as part of cut operations using a screening plant.

The selected site has previously been cleared and is being used as a stockpile storage area under Development Approval 30-50401-1. A mobile screen and stacker will be brought onto site and positioned at nearby sand stockpile locations. A hardstand is already constructed, therefore no additional site preparatory works were required.

### 2.3 Application summary and overview of premises

The applicant completed works under works approval W6549/2021/1 and submitted an environmental compliance report advising work had been completed in accordance with the works approval.

On 17 November 2021, the applicant submitted an application for a licence to the department under section 57 of the *Environmental Protection Act 1986* (EP Act).

The application is to seek a licence relating to screening of material at the premises. The premises is approximately 40 km north of Perth.

The operational activities associated with the project include the following:

- Use of a loader/excavator to load sand from nearby stockpiles into portable screening equipment;
- Screening of material;
- Stockpiling of screened material directly from equipment;

- Stockpile management using a loader;
- Loading of sand onto articulated dump trucks by loader/excavator;
- Cartage of sand to required locations within YRE footprint;
- Periodic spraying of water from carts onto pad and stockpiles.

Operating hours will be from 7am to 7pm Monday to Saturday and the estimated operating period for this project is one year.

The premises relates to Category 12 activities and assessed production capacity under Schedule 1 of the *Environmental Protection Regulations 1987* (EP Regulations) which are defined in licence L9325/2022/1. The infrastructure and equipment relating to the premises category and any associated activities which the department has considered in line with *Guideline: Risk Assessments* (DWER 2020) are outlined in licence L9325/2022/1.

### 3. Risk assessment

The department assesses the risks of emissions from prescribed premises and identifies the potential source, pathway and impact to receptors in accordance with the *Guideline: Risk Assessments* (DWER 2020).

To establish a risk event there must be an emission, a receptor which may be exposed to that emission through an identified actual or likely pathway, and a potential adverse effect to the receptor from exposure to that emission.

#### 3.1 Source-pathways and receptors

##### 3.1.1 Emissions and controls

The key emissions and associated actual or likely pathway during premises operation which have been considered in this decision report are detailed in Table 1 below. Table 1 also details the control measures the applicant has proposed to assist in controlling these emissions, where necessary.

**Table 1: Proposed applicant controls**

Emission	Sources	Potential pathways	Proposed controls
<b>Operation</b>			
Dust	Screening of sand, vehicle movements, lift-off from stockpiles and/or stored product, earthworks etc.	Air / windborne pathway	<ul style="list-style-type: none"> <li>• Daily visual monitoring for off-site dust evolution will be undertaken</li> <li>• Watering and wetting down of access roads and tracks as required.</li> <li>• Stockpiles to be wetted down by water cart where possible.</li> <li>• Consideration given to utilising a hydromulch for stockpiles generating dust for longer term dust minimisation.</li> </ul> <p>A store of chemical stabiliser will be maintained on the project. This will be applied to the stockpile:</p> <ul style="list-style-type: none"> <li>• Where stockpile operations are not planned for an extended period (i.e., greater than 2 weeks).</li> </ul>

Emission	Sources	Potential pathways	Proposed controls
			<ul style="list-style-type: none"> <li>Where it has been identified that water is being ineffective as a dust suppressant.</li> </ul> <p>In the event the project encounters complaints and issues with dust generation and the above measures do not resolve them, the following contingency measures may be applied:</p> <ul style="list-style-type: none"> <li>Installation of wind fencing; and</li> <li>Installation of continuous dust monitoring units at problematic site boundaries to quantify dust levels.</li> </ul>
Noise	Screening of material	Air / windborne pathway	<ul style="list-style-type: none"> <li>Day-time hours of operation only. No out of hours work without consent of the City of Wanneroo.</li> <li>Use lowest noise work practices and equipment which meet the requirements of the job.</li> <li>Broadband reversing alarms on construction vehicles and machinery in preference to 'beeper' reversing alarms.</li> <li>Turning off plant and vehicles when not in use.</li> <li>Limiting unnecessary use of loud equipment, generation of unnecessary noise; the movement of vehicles on the facility footprint should be minimised where possible.</li> <li>Will operate in accordance with the Noise Regulations.</li> <li>Noise monitoring undertaken to assess the measured noise with the assigned noise level under the <i>Environmental Protection (Noise) Regulations 1997</i> and submitted as part of the licence application.</li> </ul>
Stormwater - sediment laden	Contaminated stormwater and runoff	Seepage to soil and groundwater	<ul style="list-style-type: none"> <li>All stormwater will be entirely contained within the site via onsite infiltration to ensure there is no uncontrolled discharge outside the site.</li> <li>Stormwater diversion channels or bunds will be constructed to divert surface water flows, minimise soil erosion and trap and retain sediment within the site.</li> </ul>
Hydrocarbon	Spills / leaks	Seepage to soil and groundwater	<ul style="list-style-type: none"> <li>Spill kits available on site.</li> <li>Staff to follow PTA spill response procedure.</li> </ul>

### 3.1.2 Receptors

In accordance with the *Guideline: Risk Assessment* (DWER 2020), the Delegated Officer has excluded the applicant's employees, visitors, and contractors from its assessment. Protection of these parties often involves different exposure risks and prevention strategies, and is provided for under other state legislation.

Table 2 and Figure 2 below provides a summary of potential human and environmental receptors that may be impacted as a result of activities upon or emission and discharges from the prescribed premises (*Guideline: Environmental Siting* (DWER 2020)).

**Table 2: Sensitive human and environmental receptors and distance from prescribed activity**

Human receptors	Distance from prescribed activity
Closest residential receptor	500 m to the north west
Residential receptor	600 m to the south
Residential receptor	800 m to the south west
Residential receptor	600 m to the south west
Environmental receptors	Distance from prescribed activity
<p>Threatened Ecological Community – Banksia woodland of the SCP (EPBC TEC) - the YRE project boundary and stockpile location is fenced to prevent access outside of the approved disturbance areas.</p> <p>The area to the Northwest is geographically separated from the proposed screening works. The rail corridor is in between the TEC and screening site.</p>	<p>Areas approximately 450 m to the north west and 300 m to the north east</p> <p>Area approximately 600 m to the south</p>
<p>Threatened Ecological Community – <i>Melaleuca huegelii</i> – <i>M. aerea</i> (<i>M. systema</i>) shrublands on limestone ridges (TEC) (SCP26a) – The YRE project boundary and stockpile location is fenced to prevent access outside of the approved disturbance areas.</p>	Approximately 150 m to the south
<p>Groundwater - Priority 3 (P3) – Perth Coastal and Gwelup Underground Water Pollution Control Area.</p>	<p>The entire premises is located within the:</p> <ul style="list-style-type: none"> <li>- Perth Coastal and Gwelup Underground Water Pollution Control Area; and</li> <li>- Perth Groundwater Area proclaimed under <i>Rights in Water and Irrigation Act 1914</i></li> </ul>

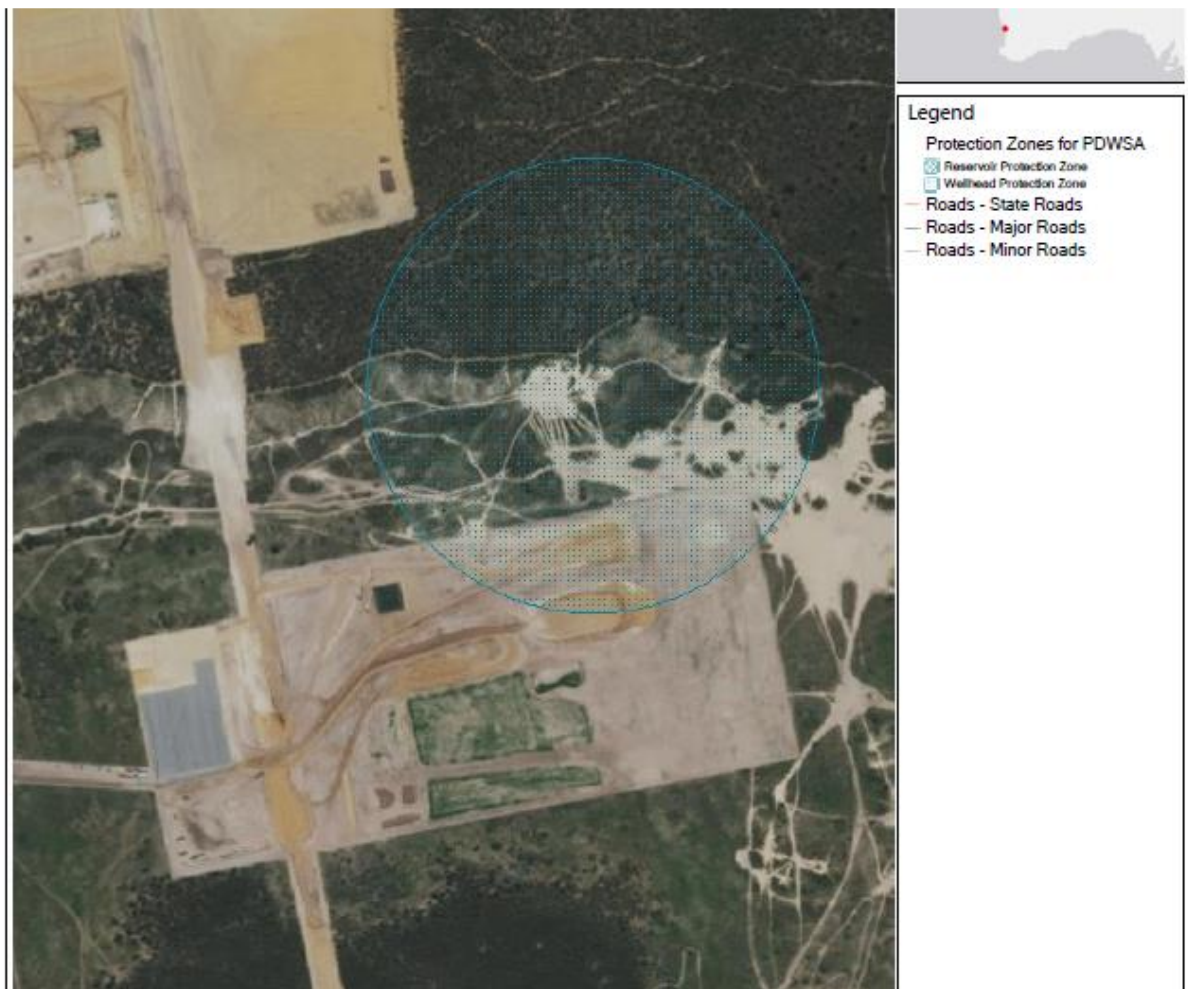
### 3.1.3 P3 – Perth Coastal and Gwelup Underground Water Pollution Control Area – change to premises area

During the initial assessment of the licence application, the Delegated Officer noted that screening activities fall within Public Drinking Water Source Protected Areas (PDWSA) (P3) – Perth Coastal and Gwelup Underground Water Control Area, the *Rights in Water and Irrigation Act 1914* Perth Groundwater Area, and a wellhead protection zone. Figures 1 and 2 show the

location of the operation and premises in relation to the wellhead protection zones (WHPZ).

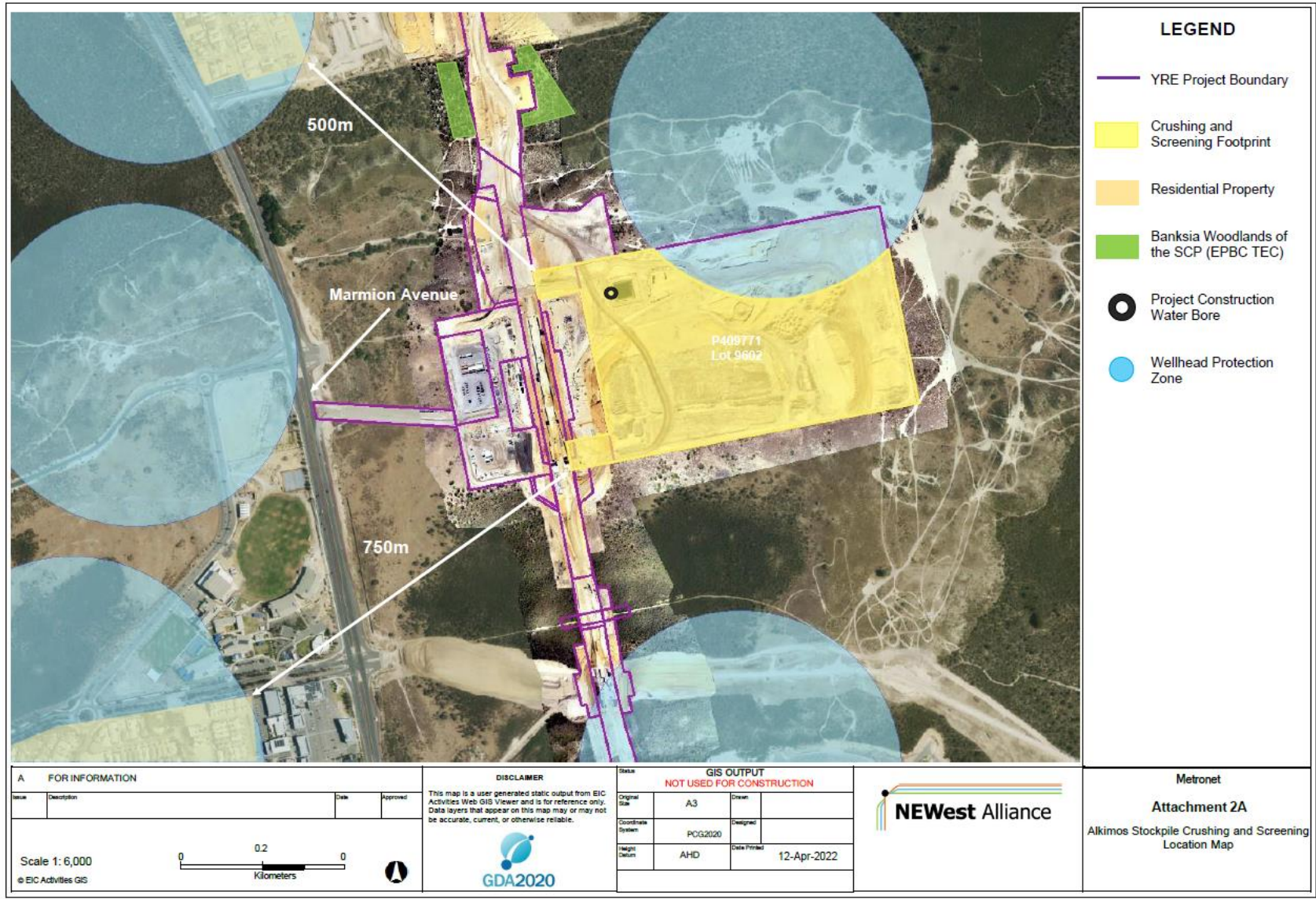
The department notes that the proposed operation is a compatible land use in accordance with *Water Quality Protection Note No. 25* (WQPN 25). However, the northeastern corner of the premises falls within a wellhead protection zone. Condition 13 of WQPN 25 specifies that screening activities should fall outside of wellhead protection zones.

The applicant was notified on 11 April 2022 of the incompatible land use and the department recommended that Lot 2 be resized to exclude crushing and screening activities from falling within the wellhead protection zone see Figure 1. On 12 April 2022 the applicant responded, agreeing to this change and submitted an updated premises map excluding the WHPZ. Refer to the yellow shaded premises crushing and screening footprint designated in Figure 2.



**Figure 1: Premises map with well head protection zone**





**Figure 2: Distance to sensitive receptors**



## 3.2 Risk ratings

Risk ratings have been assessed in accordance with the *Guideline: Risk Assessments* (DWER 2020) for each identified emission source and takes into account potential source-pathway and receptor linkages as identified in Section 3.1. Where linkages are in-complete they have not been considered further in the risk assessment.

Where the applicant has proposed mitigation measures/controls (as detailed in Section 3.13.1), these have been considered when determining the final risk rating. Where the delegated officer considers the applicant's proposed controls to be critical to maintaining an acceptable level of risk, these will be incorporated into the licence as regulatory controls.

Additional regulatory controls may be imposed where the applicant's controls are not deemed sufficient. Where this is the case the need for additional controls will be documented and justified in Table 3.

Licence L9325/2022/1 that accompanies this decision report authorises emissions associated with the operation of the premises i.e. screening activities.

The conditions in the issued licence, as outlined in Table 3 have been determined in accordance with *Guidance Statement: Setting Conditions* (DER 2015).

**Table 3: Risk assessment of potential emissions and discharges from the premises during operation**

Risk events					Risk rating <sup>1</sup> C = consequence L = likelihood	Applicant controls sufficient?	Conditions <sup>2</sup> of licence	Justification for additional regulatory controls
Sources / activities	Potential emission	Potential pathways and impact	Receptors	Applicant controls				
<b>Operation</b>								
Screening, unloading, loading and storage of material  Vehicle movements	Dust	Air / windborne pathway causing impacts to health and amenity	Residences approximately 500 m to the north	Refer to Section 3.1	C = Moderate L = Unlikely <b>Medium Risk</b>	Yes	Condition 1, Items 1 and 2 in Table 1  Conditions 3, 4 and 5	The controls proposed by the applicant are deemed suitable and necessary to manage dust emissions during operations and have therefore been conditioned as regulatory controls within licence L9325/2022/1.
	Noise	Air / windborne pathway causing impacts to health and amenity	Residences approximately 500 m to the north	Refer to Section 3.1	C = Moderate L = Unlikely <b>Medium Risk</b>	No	<b><u>Condition 1, Item 1 in Table 1</u></b>  <b><u>Condition 2</u></b>	Refer to section 3.3 for the detailed risk assessment.
	Hydrocarbons (e.g. hydraulic oil or diesel) and chemicals	Infiltration to groundwater via soil and/or overland flow causing impacts to groundwater quality	Groundwater, P3 Drinking Water Source Area	Refer to Section 3.1	C = Moderate L = Unlikely <b>Medium Risk</b>	No	<b><u>Condition 1, Table 1, item 1</u></b>	The Delegated Officer has determined that due to the premises being located within a P3 PDWSA and the porous calcareous and/or limestone soils at the premises, additional regulatory requirements have been applied to ensure appropriate management of hydrocarbons.  The Delegated Officer has determined that the following additional regulatory requirements are to be applied to manage hydrocarbon emissions during operations:  <ul style="list-style-type: none"> <li>- Maintain all mobile plant as per manufacturer's specifications,</li> <li>- Maintaining suitably stocked spill response equipment,</li> </ul>

Risk events					Risk rating <sup>1</sup> C = consequence L = likelihood	Applicant controls sufficient?	Conditions <sup>2</sup> of licence	Justification for additional regulatory controls
Sources / activities	Potential emission	Potential pathways and impact	Receptors	Applicant controls				
								<ul style="list-style-type: none"> <li>- Staff spill response training; and</li> <li>- Spill containment and clean-up</li> </ul> <p>The Delegated Officer notes that discharges to the environment are also regulated under the <i>Environmental Protection (Unauthorised Discharges) Regulations 2004</i>.</p>
	Sediment laden stormwater	Overland runoff potentially causing ecosystem disturbance or impacting surface water quality	<p><i>Melaleuca huegelii</i> 150 m to the south of the premises.</p> <p>P3 groundwater area</p>	Refer to Section 3.1	<p>C = Minor</p> <p>L = Rare</p> <p><b>Low Risk</b></p>	Yes	Condition 1, Table 1, item 3	N/A

Note 1: Consequence ratings, likelihood ratings and risk descriptions are detailed in the *Guideline: Risk Assessments* (DWER 2020).

Note 2: Proposed applicant controls are depicted by standard text. **Bold and underline text** depicts additional regulatory controls imposed by department.

## 3.3 Detailed risk assessment – Noise emissions

### 3.3.1 Overview of risk assessment

The applicant has taken noise emission monitoring during time limited operations in accordance with condition 8 of works approval W6549/2021/1 and provided an acoustic report in accordance with conditions 9 – 11 of works approval W6549/2021/1. The acoustic report was carried out by NEWest Alliance and titled Alkimos Sand Screening Plant Noise Monitoring Report (NEWest Alliance 2021) and is referenced in this document as ‘noise monitoring report’.

Table 2 above lists the relevant sensitive land uses in the vicinity of the premises, which may be receptors relevant to the activities. The residential receptors are considered as noise sensitive premises (highly sensitive area in the Noise Regulations), which are afforded the lowest allowable decibel levels to reduce impacts on health and amenity. The location of the neighbouring residential receptors to the premises are shown in Figure 2 above.

The nearest residential premises are located 500m to the northwest, 600m to the south and 600m to the southwest. It is noted that off-site measurement’s locations were shielded from the Alkimos facility by the intervening landforms.

The noise monitoring report found that:

- Assigned levels were calculated for the noise sensitive receptors including influencing factors in accordance with the *Environmental Protection (Noise) Regulations 1997*.
- Near-field noise measurements were taken in the vicinity of the loader / excavator, screening equipment, telestacker and stockpile.
- Far-field noise measurements were taken at the residential receptors identified as R1, R2, R3 and R4.
- The measurements were undertaken during a period of fine weather, so that the influence of background noise levels due to wind, rain or elevated ambient noise were minimised. Noise measurements were taken with the equipment operating under both unloading and normal load conditions.

Assigned levels were compared to the measured noise levels  $L_{A10}$  dB. It was noted that the measured noise levels are at or higher than the predicted noise levels. The report notes that the measured noise at R2 location was above the assigned noise levels. The report states that the premises was inaudible at this location, indicating that the noise contribution from the site was likely to be 5 to 10 dB less than the measured noise levels i.e. <46 dB(A) therefore the site complies with the *Environmental Protection (Noise) Regulations 1997*.

The applicant’s key proposed noise emission controls include:

- designing the premises to minimise the need for reversing of vehicles and mobile equipment;
- installing broadband reversing alarms on construction vehicles and mobile plant;
- undertaking a noise monitoring exercise at the commencement of operations to establish the noise levels from the premises at the nearest noise sensitive premises; and
- further noise mitigation measures considered if measured noise levels exceed the Assigned Noise Levels at noise sensitive premises.

In response to the submission of the noise monitoring report under W6549/2021/1, the Department’s Environmental Noise Branch undertook a review and assessment of the noise monitoring report. This review determined that:

- The calculated assigned noise levels for the various receivers are likely to be too high for the area, noting that the report does not provide significant details of the

calculations conducted to determine the assigned noise levels and various influencing factors for each monitoring location;

- The noise assessment was also undertaken when the prevailing local weather conditions were winds up to 6.5 m/s from the west-northwest. Therefore, except for the receiver labelled R4, all other receivers were upwind of the operations. As such, the noise levels may not be representative of the 'worst-case' noise levels at these locations.
- It is understood that future developments of residential receptors are due to be built on at Alkimos residential development area.
- Associated traffic and construction noise, along with the location of the noise measurement and prevailing wind direction are reasonable explanations for the slight exceedance to assigned noise level at location R2; and
- It is expected that noise levels are likely to be compliant at any receiver more than 500 metres away from the operations.



**Figure 3: Far-field measurement locations**

### 3.3.2 DWER determination

Having taken into account the noise measurements obtained during time limited operations under W6549/2021/1, proposed applicant controls and noting the review undertaken by the departments Environmental Noise Branch, the Delegated Officer considers that noise compliance is achievable through both applicant proposed controls and additional regulatory requirements. As outlined in Table 3 above, the assessed risk for noise emissions during operations is 'medium' with a consequence rating of 'moderate' and likelihood of 'possible'

The Delegated Officer has determined the proposed applicant controls are deemed suitable and necessary to manage noise emissions during operations; therefore, these aspects have been conditioned as regulatory requirements within licence L9325/2022/1 (Condition 1, Table 1).



The Delegated Officer has also determined that the following additional regulatory requirements are to be applied to manage and monitor noise emissions during operations:

- Mobile equipment is to be fitted with broadband reversing alarms.
- Mobile equipment is to be operated and calibrated in accordance with the manufacturer's specifications (Table 1, Item 1); and
- The licence holder shall ensure that operations at the premises only occur between the hours 07:00 and 19:00 (condition 2).

## 4. Consultation

Table 4 provides a summary of the consultation undertaken by the department.

**Table 4: Consultation**

Consultation method	Comments received	Department response
Application advertised on the department's website on 30 May 2022	Nil comments received	N/A
Local Government Authority advised of proposal on 30 March 2022	<p>The City of Wanneroo provided the following comments:</p> <p><i>On 27 June 2019, the City received an application from Element on behalf of the Public Transport Authority to commence development of a stockpiling facility at the subject land. The site is zoned Central City Area and Other Regional Road under the Metropolitan Region Scheme (MRS) and Centre under the City of Wanneroo District Planning Scheme No. 2 (DPS 2).</i></p> <p><i>The Stockpiling Facility is required for the Yanchep Rail Extension Project as part of the Metronet public transport program, and therefore the works are considered public works under the Public Works Act 1902. Public works are exempt from requiring development approval under DPS 2, however development approval is still required under the MRS.</i></p> <p><i>The City supported the proposal and forwarded a recommendation to the Western Australian Planning Commission (WAPC) who is the determining authority. The Stockpile Facility was subsequently approved on 30 August 2019 by the WAPC. The approval is time limited and is to be decommissioned at least two</i></p>	The Department notes this advice.

	<p><i>months prior to the Alkimos Train Station commencing operations.</i></p> <p><i>In relation to the screening of materials (sand screening) within the Stockpile Facilities for the Yanchep Rail Extension project, the City considers that the use can be considered to be incidental to the approved Stockpile Facility and will not require further development approval.</i></p>	
<p>Department of Planning, Lands and Heritage advised on 30 March 2022</p>	<p>The Department of Planning Lands and Heritage (DPLH) advised: <i>the proposed works are classified as Category 12: Screening etc. of material, to screen sand for the Yanchep Rail Extension, and are considered incidental to the works currently being undertaken in accordance with a development approval (WAPC Ref: 30-50410-1) for bulk earthworks (stockpiling and site office) approved by the Western Australian Planning Commission on the 30 August 2019.</i></p> <p><i>DPLH recommended that following the decommissioning of the land use approved under the works licence, the land shall be reinstated to its pre-construction condition as soon as practical to enable the subsequent land uses to be undertaken in accordance with the established planning framework for the land.</i></p>	<p>The Delegated Officer notes the advice regarding decommissioning and notes that this aspect will need to be considered as part of the licence surrender process, along with any other closure requirements from the LGA/ DPLH.</p>
<p>Applicant was provided with draft documents on 26 April 2022</p>	<p>The Applicant provided the following comments on 27 April 2022:</p> <p>The Applicant advised that they do not have a turkey's nest / nearby water source so committing to the sprinkler system installation on top of the stockpiles would be very difficult.</p> <p>They request that DWER consider and remove this control as the spray bar installation on the conveyor belt as well as the consistent passing of a water card is deemed more than suitable for the dust suppression requirements.</p> <p>The Applicant also requested the removal of additional noise monitoring, noting the distance from the activities on the premises to nearby sensitive receptors and that the screening operations will be masked by other construction</p>	<p>The Delegated Officer notes the comments provided by the applicant.</p> <p>Regarding the installation of the automatic sprinkler on top of the stockpiles, this was noted as a contingency measure in the event that the project encounters complaints or there are issues with dust management on site. Noting this, the Delegated Officer considers that the proposed dust controls will be suitable in mitigating the risk of typical dust emissions from the premise and has removed this requirement from the Decision Report.</p> <p>In regard to the comments regarding additional noise monitoring, the Delegated Officer reviewed the response by the Applicant and the assessment provided by the Departments Noise</p>

	<p>activities and traffic along Marmion Avenue. The Applicant also advised that measured noise levels at the residential received locations were influenced by other sources other than Alkimos sand screening facility. The results of the noise survey show that the noise emission from the site complies with the Assigned Noise Levels developed through the Environmental Protection (Noise) Policy at receivers on Stencil Street, Modernism Avenue / Mosaic Road, Graceful Boulevard and Longnor Parkway / Pateley Street. The results also indicate that the operating noise levels associated with the telestacker equipment is comparable to the data utilised in the previous noise assessment.</p>	<p>Management Branch. Given that the current closest sensitive receptors are 500 metres away from the premises boundary, and the short duration of the activity on site, the Delegated Officer agrees to the removal of the drafted noise monitoring requirements from the Licence. Operational requirements for mitigation will remain within the Licence. The Delegated Officer also notes that noise emissions at the premises are required to be managed in accordance with the <i>Environmental Protection (Noise) Regulations 1997</i>.</p>
--	---	---

## 5. Conclusion

Based on the assessment in this decision report, the delegated officer has determined that a licence will be granted, subject to conditions commensurate with the determined controls and necessary for administration and reporting requirements.

## References

1. Department of Environment Regulation (DER) 2015, *Guidance Statement: Setting Conditions*, Perth, Western Australia.
2. Department of Water and Environmental Regulation (DWER) 2020, *Guideline: Environmental Siting*, Perth, Western Australia.
3. DWER 2020, *Guideline: Risk Assessments*, Perth, Western Australia.
4. *Element, 2019, Yanchep Rail Extension – Alkimos Stockpile Site, Development Application*
5. *NEWest Alliance 2021, Alkimos Sand Screening Plant Noise Monitoring Report.*

## Appendix 2: Application validation summary

SECTION 1: APPLICATION SUMMARY					
Application type					
Licence	☒	Relevant works approval number:	W6549/2021/1	None	<input type="checkbox"/>
		Has the works approval been complied with?		Yes	<input checked="" type="checkbox"/> No <input type="checkbox"/>
		Has time limited operations under the works approval demonstrated acceptable operations?		Yes	<input type="checkbox"/> No <input type="checkbox"/> N/A <input type="checkbox"/>
		Environmental Compliance Report / Critical Containment Infrastructure Report submitted?		Yes	<input checked="" type="checkbox"/> No <input type="checkbox"/>
		Date Report received:		28/10/2021	
Date application received		17/11/2021			
Applicant and Premises details					
Applicant name/s (full legal name/s)		CPB Contractors Pty Ltd			
Premises name		Yanchep Rail Extension			
Premises location		Lot 2, Plan P419385 (Land ID 30029571) Alkimos			
Local Government Authority		City of Wanneroo			
Application documents					
HPCM file reference number:		DWERDT528460			
Key application documents (additional to application form):		<i>Alkimos Stockpile and Dust Management Plan Rev 3</i> <i>Alkimos Sand Screening Plant Noise Monitoring Report</i> <i>CPB Power of Attorney</i> <i>Extract of Project Alliance Agreement (Public Transport Authority of Western Australia)</i>			
Scope of application/assessment					
Summary of proposed activities or changes to existing operations.		<p>Licence (new) to operate under existing works approval number W6549/2021/1.</p> <p>Screen sand extracted from the Yanchep Rail Extension (YRE) project rail corridor as part of cut operations using the screening plant. A hardstand is already constructed with no additional site preparatory works required.</p> <p>Operational activities associated with the project include;</p> <ul style="list-style-type: none"> <li>○ Use of a loader/excavator to load sand from nearby stockpiles into portable screening equipment;</li> <li>○ Screening of material;</li> <li>○ Stockpiling of screened material directly from equipment;</li> <li>○ Stockpile management using a loader;</li> <li>○ Loading of sand onto articulated dump trucks by loader/excavator;</li> <li>○ Cartage of sand to required locations within YRE footprint;</li> <li>○ Periodic spraying of water from carts onto pad and stockpiles</li> </ul>			

**Category number/s (activities that cause the premises to become prescribed premises)**

**Table 1: Prescribed premises categories**

Prescribed premises category and description	Proposed production or design capacity	Proposed changes to the production or design capacity (amendments only)
Category 12: Screening etc. of material	Sand screening of material up to a maximum of 550 000 tonnes per annum.  Approximately 300 000 tonnes expected over a single year of operation.	

**Legislative context and other approvals**

Has the applicant referred, or do they intend to refer, their proposal to the EPA under Part IV of the EP Act as a significant proposal?	Yes <input type="checkbox"/> No <input checked="" type="checkbox"/>	Referral decision No: Managed under Part V <input type="checkbox"/> Assessed under Part IV <input type="checkbox"/>
Does the applicant hold any existing Part IV Ministerial Statements relevant to the application?	Yes <input type="checkbox"/> No <input checked="" type="checkbox"/>	Ministerial statement No: EPA Report No:
Has the proposal been referred and/or assessed under the EPBC Act?	Yes <input type="checkbox"/> No <input checked="" type="checkbox"/>	Reference No:
Has the applicant demonstrated occupancy (proof of occupier status)?	Yes <input checked="" type="checkbox"/> No <input type="checkbox"/>	Certificate of title <input type="checkbox"/> General lease <input type="checkbox"/> Expiry: Mining lease / tenement <input type="checkbox"/> Expiry: Other evidence <input checked="" type="checkbox"/> Expiry: A Project Alliance Agreement is in place between the PTA and CPB Contractors Pty Limited and Downer Edi Works Pty Ltd to provide access to each portion of land forming the premises.
Has the applicant obtained all relevant planning approvals?	Yes <input checked="" type="checkbox"/> No <input type="checkbox"/> N/A <input type="checkbox"/>	Approval: Expiry date: If N/A explain why? Approval by the Western Australian Planning Commission to commence development.
Has the applicant applied for, or have an existing EP Act clearing permit in relation to this proposal?	Yes <input type="checkbox"/> No <input checked="" type="checkbox"/>	CPS No: N/A No clearing is proposed.
Has the applicant applied for, or have an existing CAWS Act clearing licence in relation to this proposal?	Yes <input type="checkbox"/> No <input checked="" type="checkbox"/>	Application reference No: N/A Licence/permit No: N/A - No clearing is proposed.



Has the applicant applied for, or have an existing RIWI Act licence or permit in relation to this proposal?	Yes <input checked="" type="checkbox"/> No <input type="checkbox"/>	Application reference No: Licence/permit No: GWL205181(1)
Does the proposal involve a discharge of waste into a designated area (as defined in section 57 of the EP Act)?	Yes <input type="checkbox"/> No <input checked="" type="checkbox"/>	Name: Type: Has Regulatory Services (Water) been consulted? Yes <input type="checkbox"/> No <input type="checkbox"/> N/A <input type="checkbox"/> Regional office:
Is the Premises situated in a Public Drinking Water Source Area (PDWSA)?	Yes <input checked="" type="checkbox"/> No <input type="checkbox"/>	Name: Perth Coastal and Gwelup Underground Water Pollution Control Area. Priority: P3 Are the proposed activities/ landuse compatible with the PDWSA (refer to <a href="#">WQPN 25</a> )? Yes <input checked="" type="checkbox"/> No <input type="checkbox"/> N/A <input type="checkbox"/>
Is the Premises subject to any other Acts or subsidiary regulations (e.g. <i>Dangerous Goods Safety Act 2004, Environmental Protection (Controlled Waste) Regulations 2004, State Agreement Act xxxx</i> )	Yes <input checked="" type="checkbox"/> No <input type="checkbox"/>	<i>Environmental Protection (Controlled Waste) Regulations 2004</i> <i>Environmental Protection (Noise) Regulations 1997</i> <i>Environmental Protection (Unauthorised Discharge) Regulations 2004</i> <i>Planning and Development Act 2005</i> <i>Rights in Water and Irrigation Act 1914</i>
Is the Premises within an Environmental Protection Policy (EPP) Area?	Yes <input type="checkbox"/> No <input checked="" type="checkbox"/>	
Is the Premises subject to any EPP requirements?	Yes <input type="checkbox"/> No <input checked="" type="checkbox"/>	
Is the Premises a known or suspected contaminated site under the <i>Contaminated Sites Act 2003</i> ?	Yes <input type="checkbox"/> No <input checked="" type="checkbox"/>	Classification: N/A Date of classification: N/A