



## Application for Works Approval

### Part V Division 3 of the *Environmental Protection Act 1986*

---

**Works Approval Number** W6622/2021/1

**Applicant** Pilbara Iron Company (Services) Pty Ltd

**ACN** 107 210 248

**File number** DER2018/001042-6

**Premises** Gudai-Darri Iron Ore Mine  
State Agreement Mineral Lease (ML) 252SA  
Granted pursuant to the *Iron Ore (Mt Bruce) Agreement Act 1972* and L48/682 under the *Mining Act 1978 (WA)*  
As defined by the premises map attached to the issued works approval

**Date of report** 6 April 2022

**Proposed Decision** Intent to grant works approval

**Alana Kidd**  
**Manager, Resource Industries**  
an officer delegated under section 20 of the *Environmental Protection Act 1986 (WA)*

# Table of Contents

<b>1. Decision summary</b>	<b>1</b>
<b>2. Scope of assessment</b>	<b>1</b>
2.1 Regulatory framework	1
2.2 Application summary and overview of premises	1
2.3 Part IV of the EP Act	1
<b>3. Risk assessment</b>	<b>3</b>
3.1 Source-pathways and receptors	3
3.1.1 Emissions and controls	3
3.1.2 Receptors	5
3.1.3 Groundwater	6
3.2 Risk ratings	8
<b>4. Consultation</b>	<b>11</b>
<b>5. Conclusion</b>	<b>11</b>
<b>References</b>	<b>11</b>
<b>Appendix 1: Summary of applicant’s comments on risk assessment and draft conditions</b>	<b>12</b>
<b>Appendix 2: Application validation summary</b>	<b>15</b>
Table 1: Proposed applicant controls	3
Table 2: Sensitive human and environmental receptors and distance from prescribed activity	5
Table 3: Risk assessment of potential emissions and discharges from the premises during construction and time-limited operation	9
Table 4: Consultation	11
Figure 1: Proposed hydrocarbon storage facilities within the prescribed premises boundary	2
Figure 2: Distance to sensitive receptors	7

## 1. Decision summary

This decision report documents the assessment of potential risks to the environment and public health from emissions and discharges during the construction and time-limited operations of the premises. As a result of this assessment, works approval W6622/2021/1 has been granted.

## 2. Scope of assessment

### 2.1 Regulatory framework

In completing the assessment documented in this decision report, the Department of Water and Environmental Regulation (the department; DWER) has considered and given due regard to its regulatory framework and relevant policy documents which are available at <https://dwer.wa.gov.au/regulatory-documents>.

### 2.2 Application summary and overview of premises

On 9 November 2021, the applicant submitted an application for a works approval to the department under section 54 of the *Environmental Protection Act 1986* (EP Act).

The application is to undertake construction works relating to the installation and operation of hydrocarbon storage facilities (category 73) with an aggregate storage of 1,530 kilolitres (kL) at the premises. The premises is approximately 110 kilometres (km) west-northwest of Newman and 130 km north-east of Tom Price.

The premises relates to the category and assessed production / design capacity under Schedule 1 of the *Environmental Protection Regulations 1987* (EP Regulations) which are defined in works approval W6622/2021/1. The infrastructure and equipment relating to the premises category and any associated activities which the department has considered in line with *Guideline: Risk Assessments* (DWER 2020a) are outlined in works approval W6622/2021/1.

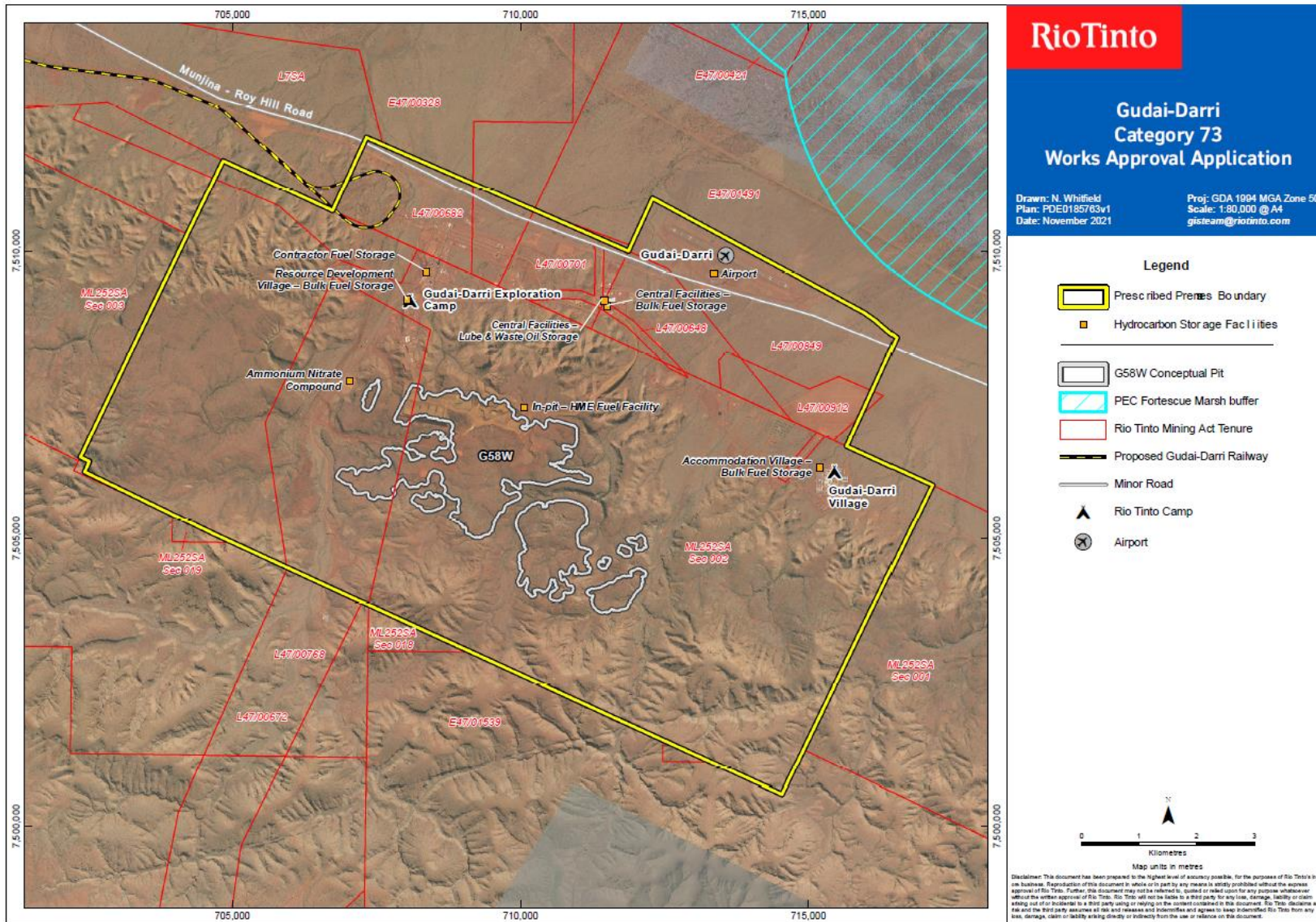
The locations of the proposed hydrocarbon storage facilities are shown in Figure 1.

### 2.3 Part IV of the EP Act

The prescribed premises is located on State Agreement Mineral Lease (ML) 252SA granted pursuant to the *Iron Ore (Mt Bruce) Agreement Act 1972* and L48/682 under the *Mining Act 1978*.

Ministerial Statement 999 was approved on 10 March 2015 for the construction and operation of an open cut iron ore mine with associated infrastructure including the railway. Approval was subject to the implementation of conditions and procedures within the approved 'Koodaideri Iron Ore Mine and Infrastructure Project Asbestos Environmental Management Plan – RTIO – HSE – 0283017' (Asbestos Environmental Management Plan) dated January 2017 relevant to the construction of the rail corridor through the Wittenoom Asbestos Management Area (WAMA).

Ministerial Statement 999 (EPA Report 1533) approves clearing of up to 7,911 hectares (ha); however, the proposed locations for the eight hydrocarbon facilities are to be installed in pre-existing cleared and disturbed land.



**Figure 1: Proposed hydrocarbon storage facilities within the prescribed premises boundary**

Works Approval: W6622/2021/1

IR-T13 Decision report template (short) v3.0 (May 2021)

### 3. Risk assessment

The department assesses the risks of emissions from prescribed premises and identifies the potential source, pathway and impact to receptors in accordance with the *Guideline: Risk Assessments* (DWER 2020a).

To establish a risk event there must be an emission, a receptor which may be exposed to that emission through an identified actual or likely pathway, and a potential adverse effect to the receptor from exposure to that emission.

#### 3.1 Source-pathways and receptors

##### 3.1.1 Emissions and controls

The key emissions and associated actual or likely pathway during premises construction and time-limited operations that have been considered in this decision report are detailed in Table 1 below. Table 1 also details the control measures the applicant has proposed to assist in controlling these emissions, where necessary.

**Table 1: Proposed applicant controls**

Emission	Sources	Potential pathways	Proposed controls
<b>Construction</b>			
Dust		<p>Air/windborne pathway causing impacts to health and amenity</p> <p>Smothering causing reduced photosynthesis to vegetation</p>	<ul style="list-style-type: none"> <li>Dust suppression controls include;               <ul style="list-style-type: none"> <li>water trucks are to be retained on site</li> <li>control of vehicle movements and restricted speed limits in place along the roads on site</li> </ul> </li> <li>Rehabilitation of disturbed areas</li> </ul>
Discharge of contaminants to land (e.g., hydrocarbon spillage from filling)	Installation of hydrocarbon storage facilities and machinery/ equipment and vehicular movement	Seepage/ spillage potentially causing ecosystem disturbance/ soil contamination	<ul style="list-style-type: none"> <li>Self-bunded, above ground, double-skinned tanks will be situated on an earthen pad with collision protection</li> <li>Tanks are to be designed and manufactured to Australian Standards (AS)1692 and AS1940</li> <li>Secondary containment of chemical and hydrocarbon storage will be used on site</li> <li>Single skin tanks (lube and waste oil storage) are located entirely within a concrete bunded area</li> <li>Tanks are to be fitted with level switches and transmitters, anti-syphon and overflow protection valves and audible alarms</li> <li>Concrete apron is used for diesel delivery and containment bunds installed for tank</li> </ul>

Emission	Sources	Potential pathways	Proposed controls
			fill and discharge points, pump stations and valve stations <ul style="list-style-type: none"> <li>Concrete hardstand will be constructed for HME refueling facilities</li> <li>Appropriate labeling used for all storage areas</li> <li>Spill response equipment will be provided on site</li> <li>All piping will be above ground where practicable, but any hydrocarbon piping below ground will be secondary contained and have visual inspection pits for any leaks in accordance with Rio Tinto standard specifications</li> </ul>
Contaminated stormwater to surface and/or groundwater			<ul style="list-style-type: none"> <li>No planned discharge of water will result from site</li> <li>Potentially contaminated water will be managed on site via bunds and surface water diversions around the facilities</li> </ul>
<b>Time-limited Operations</b>			
Discharge of contaminants to land (e.g., hydrocarbon spillage from filling)	Operation of hydrocarbon storage facilities	Seepage/spillage potentially causing ecosystem disturbance/soil contamination	<ul style="list-style-type: none"> <li>Hydrocarbon piping below ground will have visual inspections at the pits for any leaks in accordance with Rio Tinto standard specifications</li> <li>Provision of spill response equipment at all bulk hydrocarbon storage locations on site</li> <li>Weekly inspections of tank integrity and any potential leaks / damage to hydrocarbon related infrastructure/equipment</li> </ul>
Sediment laden and/or contaminated stormwater to surface and/or groundwater		Overland runoff potentially causing ecosystem disturbance  Seepage causing contamination of surface water and/or groundwater	<ul style="list-style-type: none"> <li>No planned discharge of water from site</li> <li>Potentially contaminated water managed on site via bunds and surface water diversions around the facilities</li> </ul>
Field-based machinery			<ul style="list-style-type: none"> <li>Field-based machinery refuelling from mobile fuel trucks, drip tray used at the</li> </ul>

Emission	Sources	Potential pathways	Proposed controls
and vehicle refueling – direct spillage			transfer point <ul style="list-style-type: none"> <li>• Vehicle refuelling will occur over compacted, lined earthen pad or a concrete hardstand area</li> <li>• Provision of spill response equipment</li> </ul>

### 3.1.2 Receptors

In accordance with the *Guideline: Risk Assessment* (DWER 2020a), the Delegated Officer has excluded the applicant's employees, visitors, and contractors from its assessment. Protection of these parties often involves different exposure risks and prevention strategies and is provided for under other state legislation.

Table 2 and Figure 2 below provides a summary of potential human and environmental receptors that may be impacted as a result of activities upon or emission and discharges from the prescribed premises (*Guideline: Environmental Siting* (DWER 2020b)).

**Table 2: Sensitive human and environmental receptors and distance from prescribed activity**

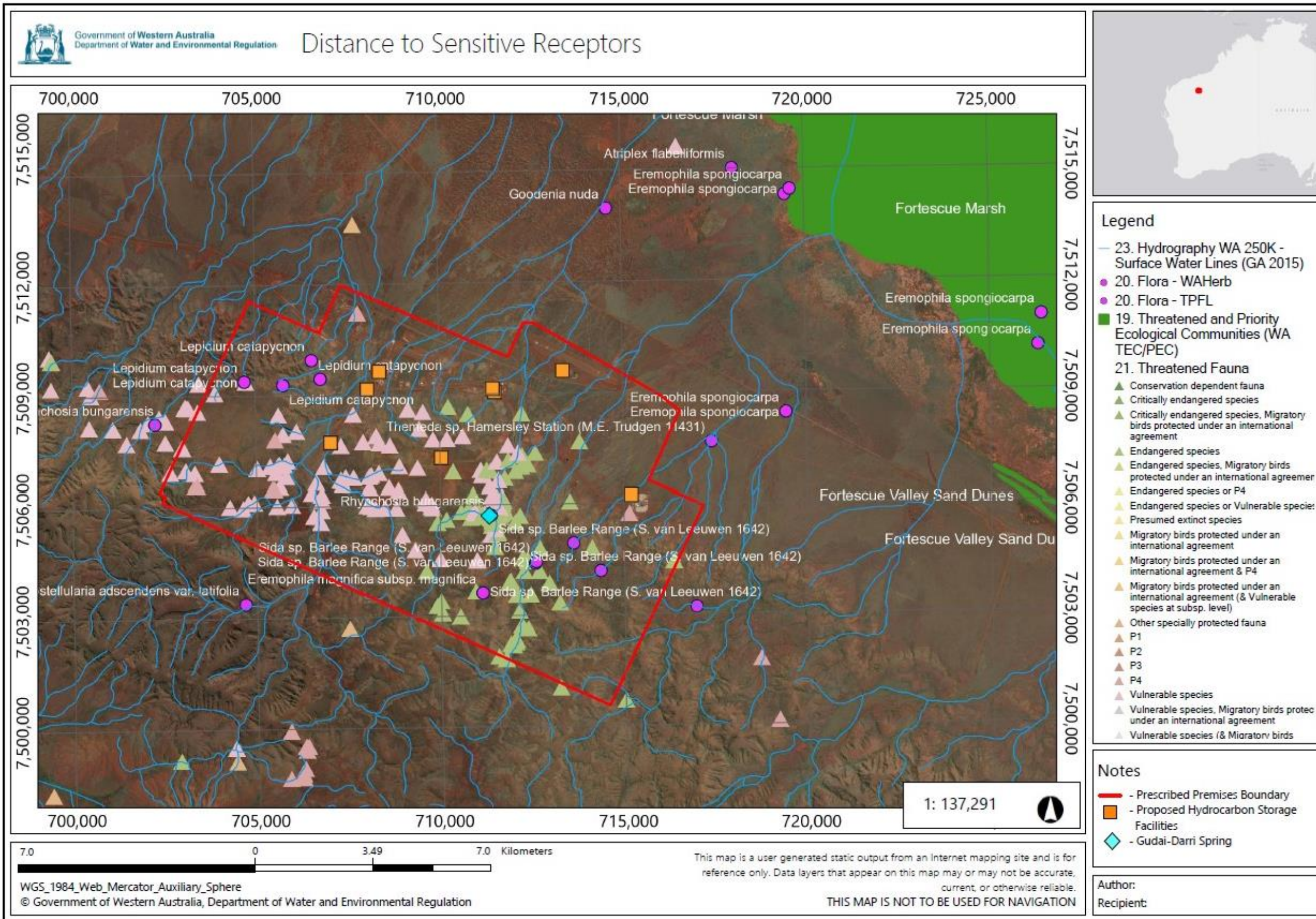
Human receptors	Distance from prescribed activity
There are no nearby human receptors.	Not applicable
Environmental receptors	Distance from prescribed activity
Priority Ecological Community (PEC) and Nationally Important Wetland <i>Fortescue Marsh P1</i>	Approximately 5.7 km north-east from prescribed premises boundary.
Threatened (T) and Priority fauna	<ol style="list-style-type: none"> <li>1. Northern Quoll (<i>Dasyurus hallucatus</i>) Endangered under BC Act and EPBC Act within the prescribed premises boundary.</li> <li>2. Grey Falcon (<i>Falco hypoleucos</i>) Vulnerable under BC Act and EPBC Act within the prescribed premises boundary.</li> <li>3. Ghost Bat (<i>Macroderma gigas</i>) Vulnerable under BC Act and EPBC Act within the prescribed premises boundary.</li> <li>4. Pilbara Leaf-nosed Bat (<i>Rhinonictis aurantia</i> (Pilbara form)) Vulnerable under <i>Biodiversity Conservation Act 2016</i> (BC Act) and EPBC Act within the prescribed premises boundary.</li> <li>5. Pilbara Olive Python (<i>Liasis olivaceus barroni</i>) Vulnerable under BC Act and EPBC Act within the prescribed premises boundary.</li> <li>6. Western Pebble-mound Mouse (<i>Pseudomys chapmani</i>) P4 within the prescribed premises boundary.</li> <li>7. Peregrine Falcon (<i>Falco peregrinus</i>) Other Specially Protected under the BC Act within the prescribed premises boundary.</li> </ol>
Threatened and Priority flora	<ol style="list-style-type: none"> <li>1. <i>Synostemon hamersleyensis</i> P1 approximately 2.8 km south-west from the Accommodation Village – Bulk Fuel Storage.</li> <li>2. <i>Rostelluria adscendens</i> var. <i>latifolia</i> P3 approximately 4.8</li> </ol>

	<p>km south-west of the Ammonium Nitrate Compound.</p> <ol style="list-style-type: none"> <li>3. <i>Sida</i> sp. Barlee Range (S. van Leeuwen 1642) P3 approximately 2km south-east from the In-Pit HME Fuel Facility and 2km south-west from the Accommodation Village – Bulk Fuel Storage.</li> <li>4. <i>Themeda</i> sp. Hamersley Station (M.E. Trudgen 11431) P3 approximately 800 m south-west from the Contractor Fuel Storage.</li> <li>5. <i>Eremophila magnifica</i> subsp. <i>magnifica</i> P4 approximately 3.7 km south-west of the In-Pit HME Fuel Facility.</li> <li>6. <i>Lepidium catapycnon</i> P4 approximately 1.3 km north-west from the Resource Development Village – Bulk Fuel Storage.</li> <li>7. <i>Rhynchosia bungarensis</i> P4 approximately 2 km south-east from the In-Pit HME Fuel Facility and 2km south-west from the Accommodation Village – Bulk Fuel Storage.</li> </ol> <p><b>Note: Conservation status for <i>Lepidium catapycnon</i> P4 is no longer listed as Threatened under the BC Act.</b></p> <p><b><i>Synostemon hamersleyensis</i> P1 is no longer listed as Vulnerable under the EPBC Act.</b></p> <p><b><i>Seringia exastia</i> T is no longer listed as Threatened under the BC Act and occurs outside the prescribed premise boundary.</b></p>
Registered aboriginal heritage sites	<p>Multiple heritage sites occur within the prescribed premises boundary, with one site (Place ID 29393) approximately 70 m south from the Resource Development Village – Bulk Fuel Storage. Other sites are more than 330 m away from the HSF.</p> <p><b>Screened out as a receptor as there is no proposed disturbance to the nearest site more than 40 m away.</b></p>
Pilbara Groundwater Area <i>RIWI Act 1914</i> – Groundwater Areas	<p>Groundwater within 70 metres (m) below ground level. Occurs within the prescribed premises boundary.</p>
Pilbara Surface Water Area <i>RIWI Act 1914</i> – Surface Water Areas and Irrigation Districts	<p>Occurs within the prescribed premises boundary.</p>
Gudai-Darri Spring Gorge	<p>Approximately 2 km south-east from the In-Pit HME Fuel Facility and 4 km south-west from the Accommodation Village – Bulk Fuel Storage.</p>

### 3.1.3 Groundwater

Depth to groundwater within the prescribe premises boundary is about 70 m below ground level where water quality is fresh with an electrical conductivity between 412 and 420 microsiemens per centimeter ( $\mu\text{S}/\text{cm}$ ). Groundwater is generally expected to flow northwards. The applicant has advised several groundwater monitoring bores are located within and outside of the prescribed premises boundary. Although groundwater monitoring is a component of ongoing operations, given the depth to groundwater, no additional water quality parameters will be included.





**Figure 2: Distance to sensitive receptors**

## 3.2 Risk ratings

Risk ratings have been assessed in accordance with the *Guideline: Risk Assessments* (DWER 2020a) for each identified emission source and takes into account potential source-pathway and receptor linkages as identified in Section 3.1. Where linkages are in-complete they have not been considered further in the risk assessment.

Where the applicant has proposed mitigation measures/controls (as detailed in Section 3.1), these have been considered when determining the final risk rating. Where the delegated officer considers the applicant's proposed controls to be critical to maintaining an acceptable level of risk, these will be incorporated into the works approval as regulatory controls.

Additional regulatory controls may be imposed where the applicant's controls are not deemed sufficient. Where this is the case the need for additional controls will be documented and justified in Table 3.

Works approval W6622/2021/1 that accompanies this decision report authorises construction, commissioning, and time-limited operations. The conditions in the issued works approval, as outlined in Table 3 have been determined in accordance with *Guidance Statement: Setting Conditions* (DER 2015).

**Table 3: Risk assessment of potential emissions and discharges from the premises during construction and time-limited operation**

Risk events					Risk rating <sup>1</sup> C = consequence L = likelihood	Applicant controls sufficient?	Conditions <sup>2</sup> of works approval	Justification for additional regulatory controls
Sources / activities	Potential emission	Potential pathways and impact	Receptors	Applicant controls				
<b>Construction</b>								
Installation of hydrocarbon storage facilities and machinery/equipment and vehicular movement	Dust	Air/windborne pathway causing impacts to health and amenity	Nearby vegetation and fauna  Nearby threatened/priority flora and fauna	Refer to Section 3.1	C = Slight L = Rare <b>Low Risk</b>	Y	No regulatory controls are required to mitigate this risk.	N/A
	Hydrocarbon spillage while filling, contaminated stormwater	Smothering causing reduced photosynthesis to vegetation	Nearby aboriginal heritage sites		C = Slight L = Unlikely <b>Low Risk</b>	Y	Condition 1, Table 1 - Design and construction / installation requirements  Condition 2, Table 2 – Operational requirements (Direct Spillage Controls)	N/A
<b>Time-Limited Operations</b>								
Operation of hydrocarbon storage facilities	Discharge of contaminants to land (e.g., hydrocarbons spill).  Vehicles refuelling – direct spillage	Seepage/spillage potentially causing ecosystem disturbance/soil contamination	Nearby vegetation and fauna  Nearby threatened/priority flora and fauna  Fortescue Marsh is approximately 5.7 km and Gudai-Darri Spring Gorge is 2 km away from the facilities	Refer to Section 3.1	C = Slight L = Unlikely <b>Low Risk</b>	Y	Condition 1, Table 1 - Design and construction / installation requirements  Condition 2, Table 2 – Operational requirements	In addition to the infrastructure and operation requirements, provisions of the <i>Environmental Protection (Unauthorised discharges) Regulations 2004</i> apply for certain discharges to the environment, such as hydrocarbons.
	Sediment laden and/or	Overland runoff potentially causing			C = Slight	Y	Condition 1, Table 1 - Design and construction /	N/A

Works Approval: W6622/2021/1

Risk events					Risk rating <sup>1</sup> C = consequence L = likelihood	Applicant controls sufficient?	Conditions <sup>2</sup> of works approval	Justification for additional regulatory controls
Sources / activities	Potential emission	Potential pathways and impact	Receptors	Applicant controls				
	contaminated stormwater to surface and/or groundwater	ecosystem disturbance Seepage causing contamination of surface water and/or groundwater	Soil Groundwater/ Surface water		L = Unlikely  <b>Low Risk</b>		installation requirements  Condition 2, Table 2 – Operational requirements	

Note 1: Consequence ratings, likelihood ratings and risk descriptions are detailed in the *Guideline: Risk Assessments* (DWER 2020).

Note 2: Proposed applicant controls are depicted by standard text. **Bold and underline text** depicts additional regulatory controls imposed by department.

## 4. Consultation

Table 4 provides a summary of the consultation undertaken by the department.

**Table 4: Consultation**

Consultation method	Comments received	Department response
Application advertised on the department's website on 17 January 2022	None received	N/A
Local Government Authority advised of proposal on 18 January 2022	None received	N/A
Department of Mines, Industry Regulation and Safety (DMIRS) advised of proposal on 18 January 2022	DMIRS responded on 10 February 2022 and had no comment to the application	N/A
Applicant was provided with draft documents on 24 February 2022	Applicant has provided comments on 25 March 2022. The summarised applicant comments are provided in Appendix 1.	DWER responses to applicant comments are provided in Appendix 1.

## 5. Conclusion

Based on the assessment in this decision report, the delegated officer has determined that a works approval will be granted, subject to conditions commensurate with the determined controls and necessary for administration and reporting requirements.

## References

1. Department of Environment Regulation (DER) 2015, *Guidance Statement: Setting Conditions*, Perth, Western Australia.
2. Department of Water and Environmental Regulation (DWER) 2020a, *Guideline: Risk Assessments*, Perth, Western Australia.
3. DWER 2020b, *Guideline: Environmental Siting*, Perth, Western Australia.

## Appendix 1: Summary of applicant's comments on risk assessment and draft conditions

Condition/Section	Summary of applicant's comment	Department's response						
<b>DRAFT Works Approval</b>								
Condition 1 Table 1: Design and construction/ installation requirements	<p>Since submission of the works approval application the contractor fuel storage (70 kL) has been removed from the scope.</p> <p>The applicant requests that Item 1 of <i>Table 1: Design and construction / installation requirements</i> is amended as follows:</p> <p>Table 1: Design and construction / installation requirements</p> <table border="1"> <thead> <tr> <th>Infrastructure</th> <th>Design and construction / installation requirements</th> <th>Infrastructure location</th> </tr> </thead> <tbody> <tr> <td>                     Contractor Fuel Storage                      1. <del>One (1) 70 kilolitre (kL) Diesel Tank</del>                      • One (1) 95 kL Diesel Tank                 </td> <td> <ul style="list-style-type: none"> <li>Self-bunded, horizontal above-ground tank situated on an earthen pad</li> <li>Tanks designed and manufactured to AS1692 &amp; AS1940</li> <li>Tank is fitted with a level switch and transmitter, anti-syphon and overfill protection valves and an audible alarm to alert of an overfill</li> <li>HDPE lined earthen refuelling apron with grated sump</li> </ul> </td> <td>Schedule 1: Figure 1</td> </tr> </tbody> </table>	Infrastructure	Design and construction / installation requirements	Infrastructure location	Contractor Fuel Storage 1. <del>One (1) 70 kilolitre (kL) Diesel Tank</del> • One (1) 95 kL Diesel Tank	<ul style="list-style-type: none"> <li>Self-bunded, horizontal above-ground tank situated on an earthen pad</li> <li>Tanks designed and manufactured to AS1692 &amp; AS1940</li> <li>Tank is fitted with a level switch and transmitter, anti-syphon and overfill protection valves and an audible alarm to alert of an overfill</li> <li>HDPE lined earthen refuelling apron with grated sump</li> </ul>	Schedule 1: Figure 1	Reference to 'One (1) 70 kilolitre (kL) Diesel Tank' has been removed from Table 1, item 1.
Infrastructure	Design and construction / installation requirements	Infrastructure location						
Contractor Fuel Storage 1. <del>One (1) 70 kilolitre (kL) Diesel Tank</del> • One (1) 95 kL Diesel Tank	<ul style="list-style-type: none"> <li>Self-bunded, horizontal above-ground tank situated on an earthen pad</li> <li>Tanks designed and manufactured to AS1692 &amp; AS1940</li> <li>Tank is fitted with a level switch and transmitter, anti-syphon and overfill protection valves and an audible alarm to alert of an overfill</li> <li>HDPE lined earthen refuelling apron with grated sump</li> </ul>	Schedule 1: Figure 1						
Condition 1 Table 1: Design and construction/ installation requirements	For line item 'Resource Development Village – Bulk Fuel Storage' Reformat column two (too many bullet points).	The administrative error has been corrected.						
Condition 4 (a)	<p>The applicant notes there are no commissioning requirements within the conditions and request condition 4(a) be amended as follows:</p> <p><i>The works approval holder may only commence time limited operations for an item of infrastructure identified in condition 1:</i></p> <p><del>“where each item of infrastructure is not authorised to undertake environmental commissioning, where the Environmental Compliance Report as required by condition 2 has been submitted by the works approval holder for that item of infrastructure.</del></p> <p>Noting the correction from condition 1 to condition 2.</p>	The administrative error has been corrected.						
Condition 6 Table 2: Infrastructure and equipment requirements	<p>The applicant requests the wording be amended as follows “<b>Hydrocarbon storage facilities holding no more than total aggregate of 1530m<sup>3</sup></b>”</p> <p>The applicant notes that the infrastructure and equipment bulleted under the</p>	The administrative error has been corrected.						

Condition/Section	Summary of applicant's comment	Department's response
during time limited operations	<p><i>'Discharged Contaminants to Land/Stormwater Controls'</i> subheading of the <i>'Operational requirement'</i> column of Table 2 will be verified in the environmental compliance report submitted as part of condition 2. This infrastructure and equipment are therefore not required to be specified during the time limited operations phase as an <i>'operational requirement'</i>.</p> <p>The applicant requests the column "Operational requirement" be updated to:</p> <ul style="list-style-type: none"> <li>Hydrocarbon storage facilities holding no more than total aggregate of 1530m<sup>3</sup>.</li> <li>Provision of spill response equipment at all bulk hydrocarbon storage locations on site.</li> <li>Weekly inspections of tank integrity and any potential leaks/damage to hydrocarbon related infrastructure/equipment.</li> </ul>	<p>Operational requirements under Table 2, column two has been reviewed and updated as per request from the applicant.</p> <p>The following requirements removed from Table 2, column two has been incorporated into Table 1, column 2 – <i>"Design and construction/installation requirements"</i>:</p> <ul style="list-style-type: none"> <li>Secondary containment of chemical and hydrocarbon storage will be used on site</li> <li>Appropriate labeling will be at all chemical and hydrocarbon storage areas</li> </ul>
Condition 6 Table 2: Infrastructure	Remove "One (1) 70 kilolitre Diesel Tank". As noted in item 1 of Table 1, this is no longer required	Reference to <i>'One (1) 70 kilolitre (kL) Diesel Tank'</i> has been removed from Table 6, item 1.
Schedule 1: Maps	Attachment 2 has been updated with a figure, which references "Hydrocarbon storage facilities" replacing "Fuel storage facilities".	Schedule 1, Figure 1 has been updated with the figure in Attachment 2 as provided by the applicant.
<b>DRAFT Decision Report</b>		
Section 3.1.1 Table 1 Water sprays – Applicant to provide more detail e.g., where the sprays are located and what are they spraying – roads, HSF areas?	There will be no permanent or temporary installations of water sprays as vegetation clearing and preparatory earthworks have been completed. Dust emissions from vehicle movements will be managed via the use of water carts. The applicant request that reference to water sprays is removed.	Reference to water sprays has been removed from Table 1, column 4 <i>'Proposed controls'</i> .
Section 3.1.1 Table 1 Time limited operations Proposed controls	N/A	Table 1 in the decision report under proposed controls has been updated based on the applicant's response in the works approval regarding Condition 6. Table 2.

Condition/Section	Summary of applicant's comment	Department's response
Section 3.1.2 Table 2 Confirmation and detail on TO engagement	The area has been archaeologically and ethnographically surveyed. There is no proposed disturbance to the heritage site as the facility is more than 40 m away. Based upon this there will be no consultation with Banjima for this work.	The following has been included in Table 2, column 2:  <i>"Screened out as a receptor as there is no proposed disturbance to the nearest site more than 40 m away."</i>
Section 2.2 Figure 1	Attachment 2 has been updated with a figure, which references "Hydrocarbon storage facilities" replacing "Fuel storage facilities".	Figure 1 has been updated with the figure in Attachment 2 as provided by the applicant.



## Appendix 2: Application validation summary

SECTION 1: APPLICATION SUMMARY				
<b>Application type</b>				
Works approval	<input checked="" type="checkbox"/>			
Licence	<input type="checkbox"/>	Relevant works approval number:		None <input type="checkbox"/>
		Has the works approval been complied with?	Yes <input type="checkbox"/> No <input type="checkbox"/>	
		Has time limited operations under the works approval demonstrated acceptable operations?	Yes <input type="checkbox"/> No <input type="checkbox"/> N/A <input type="checkbox"/>	
		Environmental Compliance Report submitted?	Yes <input type="checkbox"/> No <input type="checkbox"/>	
		Date Report received:		
Renewal	<input type="checkbox"/>	Current licence number:		
Amendment to works approval	<input type="checkbox"/>	Current works approval number:		
Amendment to licence	<input type="checkbox"/>	Current licence number:		
		Relevant works approval number:	N/A	<input type="checkbox"/>
Registration	<input type="checkbox"/>	Current works approval number:	None	<input type="checkbox"/>
Date application received	9 November 2021			
<b>Applicant and Premises details</b>				
Applicant name/s (full legal name/s)	Pilbara Iron Company (Services) Pty Ltd			
Premises name	Gudai-Darri Iron Ore Mine			
Premises location	State Agreement Mineral Lease (ML) 252SA granted pursuant to the <i>Iron Ore (Mt Bruce) Agreement Act 1972</i> and L48/682 under the <i>Mining Act 1978 (WA)</i>  Approximately 110 km west-northwest of Newman and 130 km north-east of Tom Price.			
Local Government Authority	Shire of East Pilbara			
<b>Application documents</b>				
HPCM file reference number:	DER2018/001042-6			
Key application documents (additional to application form):	<ul style="list-style-type: none"> <li>- Attachment 1A: Proof of occupier status</li> <li>- Attachment 1B: ASIC company extract</li> <li>- Attachment 1C: Authorisation to Act as a Representative of the Occupier</li> <li>- Attachment 2A and 7: Premises Maps and Siting and Location Maps</li> <li>- Attachment 8: Works Approval Supporting Document: Gudai-Darri (Koodaideri) Iron Ore Mine – Category 73 (RTIO, 2021)</li> </ul>			

Scope of application/assessment		
Summary of proposed activities or changes to existing operations.	<p>Installation and operation of hydrocarbon storage facilities (HSF) in 1,600 m<sup>3</sup> in aggregate for the construction, commissioning, and operations of the Gudai-Darri Iron Ore Mine.</p> <p>The proposed facilities includes;</p> <ul style="list-style-type: none"> <li>- Contractor Storage: one (1) 70 kilolitre (kL) and one (1) 95 kL diesel tank</li> <li>- Resource Development Village: two (2) 55 kL diesel tanks</li> <li>- Accommodation Village: one (1) 55 kL and one (1) 110 kL diesel tank</li> <li>- Central Facilities: three (3) 200 kL diesel tanks</li> <li>- Central Facilities: three (3) 45 kL lube and waster oil tanks</li> <li>- Airport: one (1) 55 kL jet A1 fuel tank</li> <li>- In-Pit Facilities: two (2) 150 kL diesel tanks</li> <li>- Ammonium Nitrate Compound: one (1) 70 kL diesel tank</li> </ul>	
Category number/s (activities that cause the premises to become prescribed premises)		
Table 1: Prescribed premises categories		
Prescribed premises category and description	Proposed production or design capacity	Proposed changes to the production or design capacity (amendments only)
<p>Category 73: Bulk storage of chemicals etc.: premises on which acids, alkalis or chemicals that –</p> <p>(a) contain at least one carbon to carbon bond; and</p> <p>(b) are liquid at STP (standard temperature and pressure), are stored.</p>	1,600 m <sup>3</sup> in aggregate	
Legislative context and other approvals		
Has the applicant referred, or do they intend to refer, their proposal to the EPA under Part IV of the EP Act as a significant proposal?	Yes <input type="checkbox"/> No <input checked="" type="checkbox"/>	Referral decision No: Managed under Part V <input type="checkbox"/> Assessed under Part IV <input type="checkbox"/>
Does the applicant hold any existing Part IV Ministerial Statements relevant to the application?	Yes <input checked="" type="checkbox"/> No <input type="checkbox"/>	Ministerial statement No: 999 EPA Report No: 1533
Has the proposal been referred and/or assessed under the EPBC Act?	Yes <input type="checkbox"/> No <input checked="" type="checkbox"/>	Reference No:
Has the applicant demonstrated occupancy (proof of occupier status)?	Yes <input checked="" type="checkbox"/> No <input type="checkbox"/>	Certificate of title <input type="checkbox"/> General lease <input type="checkbox"/> Expiry: Mining lease / tenement <input checked="" type="checkbox"/> Expiry: Other evidence <input type="checkbox"/> Expiry:

Has the applicant obtained all relevant planning approvals?	Yes <input type="checkbox"/> No <input type="checkbox"/> N/A <input checked="" type="checkbox"/>	Approval: Expiry date: If N/A explain why?
Has the applicant applied for, or have an existing EP Act clearing permit in relation to this proposal?	Yes <input type="checkbox"/> No <input checked="" type="checkbox"/>	CPS No: N/A Exemption applies where the Ministerial Statement 999 approves up to 7,911 hectares (ha) with all clearing associated with this proposal being covered by this approval.
Has the applicant applied for, or have an existing CAWS Act clearing licence in relation to this proposal?	Yes <input type="checkbox"/> No <input checked="" type="checkbox"/>	Application reference No: N/A Licence/permit No: N/A
Has the applicant applied for, or have an existing RIWI Act licence or permit in relation to this proposal?	Yes <input checked="" type="checkbox"/> No <input type="checkbox"/>	Application reference No: N/A Licence/permit No: Applicant has existing RIWI Act licences: GWL 158473; GWL 164672 GWL 171847; GWL 174242 GWL 202549; GWL 202550 GWL177962 (application in progress with DWER – Water branch to increase abstraction limit)
Does the proposal involve a discharge of waste into a designated area (as defined in section 57 of the EP Act)?	Yes <input type="checkbox"/> No <input checked="" type="checkbox"/>	Name: N/A Type: N/A Has Regulatory Services (Water) been consulted? Yes <input type="checkbox"/> No <input type="checkbox"/> N/A <input checked="" type="checkbox"/> Regional office:
Is the Premises situated in a Public Drinking Water Source Area (PDWSA)?	Yes <input type="checkbox"/> No <input checked="" type="checkbox"/>	Name: N/A Priority: N/A Are the proposed activities/ landuse compatible with the PDWSA (refer to <u>WQPN 25</u> )? Yes <input type="checkbox"/> No <input type="checkbox"/> N/A <input checked="" type="checkbox"/>
Is the Premises subject to any other Acts or subsidiary regulations (e.g. <i>Dangerous Goods Safety Act 2004, Environmental Protection (Controlled Waste) Regulations 2004, State Agreement Act xxx</i> )	Yes <input checked="" type="checkbox"/> No <input type="checkbox"/>	<i>Iron Ore (Mt Bruce) Agreement Act 1972</i> <i>Dangerous Goods Safety Act 2004 (DGS Act)</i> DG licences: DGS022544; DGS022506, and DGS022589

Is the Premises within an Environmental Protection Policy (EPP) Area?	Yes <input type="checkbox"/> No <input checked="" type="checkbox"/>	
Is the Premises subject to any EPP requirements?	Yes <input type="checkbox"/> No <input checked="" type="checkbox"/>	
Is the Premises a known or suspected contaminated site under the <i>Contaminated Sites Act 2003</i> ?	Yes <input type="checkbox"/> No <input checked="" type="checkbox"/>	<p>Classification: N/A</p> <p>Date of classification: N/A</p> <p>Note: Small area south of the Accommodation Village – Bulk Fuel Storage indicates a 'Contaminated site – awaiting classification'.</p>