

Table 12: Vegetation communities recorded within the survey area



Image	Vegetation community	Woodman (2013) corresponding vegetation type	Vegetation description	Quadrats	Extent within the survey area (ha)	Proportion of the survey area (%)
	AcEbHh	10 and 12	<i>Allocasuarina campestris</i> tall sparse shrubland over <i>Eremaea beaufortioides</i> , <i>Calothamnus quadrifidus</i> subsp. <i>angustifolius</i> , <i>Isopogon tridens</i> mid sparse shrubland over <i>Hibbertia hypericoides</i> , <i>Melaleuca leuropoma</i> low open shrubland and <i>Ecdeiocolea monostachya</i> low open sedgeland.	ELA01, ELA02, ELA05, ELA09, ELA20 and ELA21	72.2	34.02
	EtAhHh	13a	<i>Eucalyptus todtiana</i> mid open woodland over <i>Allocasuarina humilis</i> , <i>Banksia scabrella</i> (P4), <i>Calothamnus sanguineus</i> mid open shrubland over <i>Hibbertia hypericoides</i> , <i>Melaleuca leuropoma</i> low open shrubland and <i>Caustis dioica</i> low open sedgeland.	ELA03, ELA04, ELA07, ELA08, ELA14 and ELA17	55	25.92





Image	Vegetation community	Woodman (2013) corresponding vegetation type	Vegetation description	Quadrats	Extent within the survey area (ha)	Proportion of the survey area (%)
	BpDdHh	13b	<i>Banksia prionotes</i> mid open woodland over <i>Daviesia divaricata</i> , <i>Conospermum boreale</i> , <i>Allocasuarina humilis</i> mid open shrubland over <i>Hibbertia hypericoides</i> low open shrubland and <i>Ecdeiocolea monostachya</i> , <i>Mesomelaena pseudostygia</i> low open sedgeland.	ELA06, ELA11, ELA25 and ELA26	12	5.66
	AcAhGp	9	<i>Allocasuarina campestris</i> tall sparse shrubland over <i>Allocasuarina humilis</i> , <i>Hakea auriculata</i> , <i>Petrophile shuttleworthiana</i> mid open shrubland over <i>Gastrolobium plicatum</i> low open shrubland and <i>Ecdeiocolea monostachya</i> , <i>Schoenus armeria</i> low open sedgeland.	ELA10, ELA12 and ELA13	5.5	2.59
	AcDdMI	12	<i>Allocasuarina campestris</i> tall isolated shrubs over <i>Daviesia divaricata</i> , <i>Conospermum boreale</i> , <i>Beaufortia elegans</i> mid open shrubland over <i>Melaleuca leuropoma</i> , <i>Hibbertia hypericoides</i> low open shrub over <i>Ecdeiocolea monostachya</i> low open sedgeland.	ELA15, ELA16, ELA18 and ELA19	35.9	16.92

Image	Vegetation community	Woodman (2013) corresponding vegetation type	Vegetation description	Quadrats	Extent within the survey area (ha)	Proportion of the survey area (%)
	EtBaHh	10, 13b	<p><i>Eucalyptus todtiana</i> mid open woodland over <i>Banksia attenuata</i>, <i>Calothamnus blepharospermus</i>, <i>Eremaea beaufortoides</i> mid open shrubland over <i>Hibbertia hypericoides</i>, <i>Melaleuca leuropoma</i> low open shrubland and <i>Ecdeiocolea monostachya</i> low open sedgeland.</p>	ELA22, ELA23 and ELA24	28.1	13.24
TOTAL					212.2	100

3.2.6 Vegetation condition

Vegetation condition within the survey area was Excellent (208.7 ha; 98.35%) or Cleared (3.5 ha; 1.65%), based on the Keighery (1994) vegetation scale provided in the EPA *Technical Guidance: Flora and Vegetation Surveys for Environmental Impact Assessment* (2016).

The primary disturbance within the survey area was a recent prescribed burn, which occurred in April 2019. Post fire regeneration was very good, with majority of species that were expected to occur being recorded. It is noted however, that structural elements of defined vegetation communities may slightly change over time as plant growth and development continue. Minor disturbances included minimal presence of weeds and feral fauna (rabbit diggings, scats). Vegetation condition within the survey area is presented in **Figure 11**.



Legend

Survey Footprint

Species

- *Guichenotia alba* (P3)
- *Banksia scabrella* (P4)
- *Stawellia dimorphantha* (P4)

0 125 250 500
Metres
Scale: 1:20,000
Datum/Projection:
GDA 1994 MGA Zone 50

N

eco logical AUSTRALIA
A TETRA TECH COMPANY

Project: 20PER16294-GM Date: 15/10/2020




Legend

Survey Footprint

Species

- *Lasiopetalum ogilvieanum* (P1)
- *Micromyrtus rogeri* (P1)
- *Guichenotia alba* (P3)
- *Stylidium drummondianum* (P3)
- *Banksia scabrella* (P4)
- *Eucalyptus macrocarpa* subsp. *elachantha* (P4)



0 125 250 500
Metres

Scale: 1:20,000
Datum/Projection:
GDA 1994 MGA Zone 50

N

eco logical
AUSTRALIA
A TETRA TECH COMPANY

Project: 20PER16294-GM Date: 15/10/2020




Legend

Survey Footprint

Species

- Mesomelaena stygia* subsp. *deflexa* (P3)
- Lasiopetalum ogilvieanum* (P1)
- Micromyrtus rogeri* (P1)
- Stylidium drummondianum* (P3)
- Banksia scabrella* (P4)



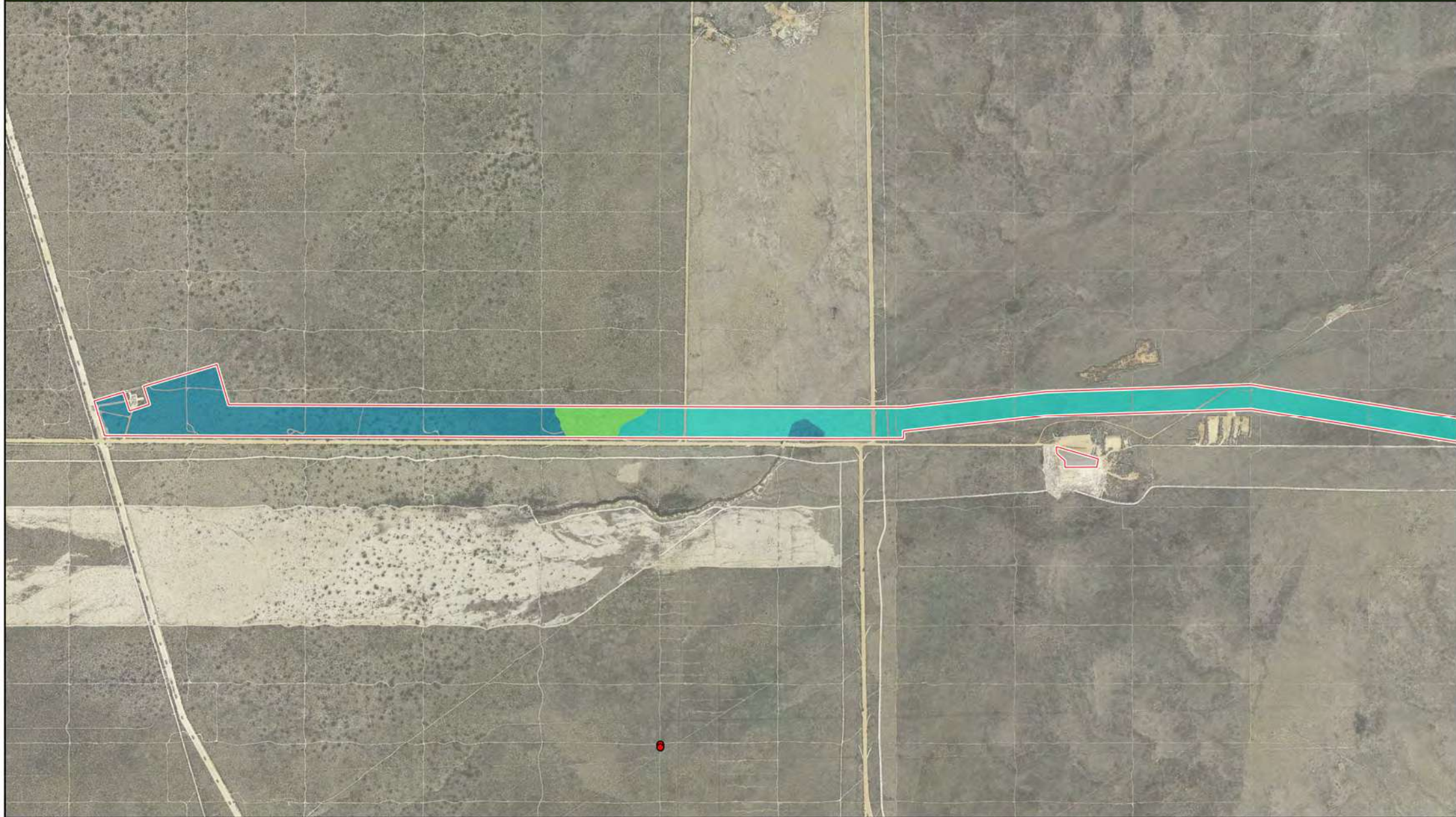
0 125 250 500
Metres

Scale: 1:20,000
Datum/Projection:
GDA 1994 MGA Zone 50

N

eco logical
AUSTRALIA
A TETRA TECH COMPANY

Project: 20PER16294-GM Date: 15/10/2020

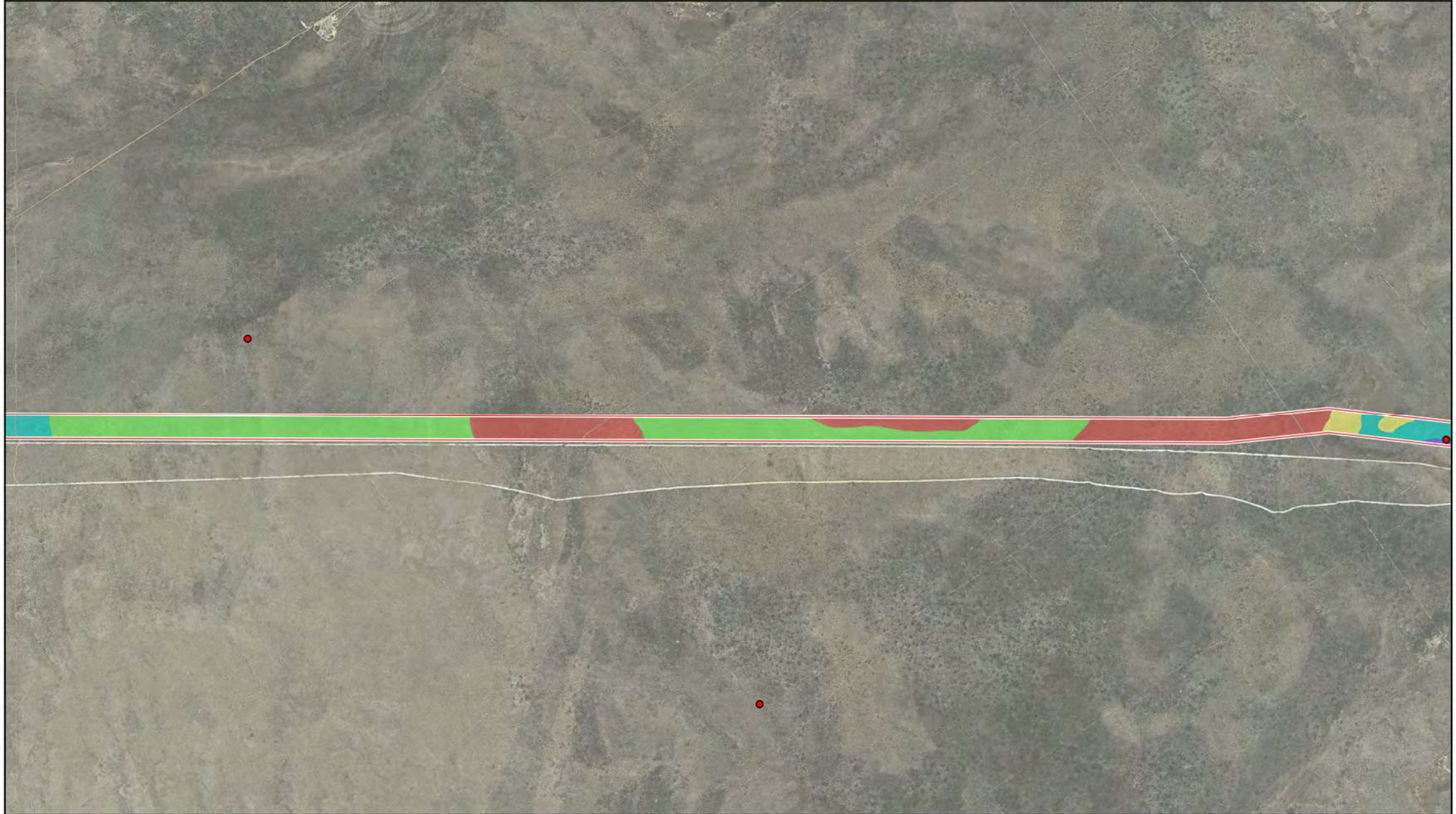


Legend

Survey Footprint	Vegetation communities
<i>Paracalaena dixonii</i> (T)	AcDdMI
	AcEbHh
	EtBaHh
	Cleared


Scale: 1:20,000
Datum/Projection: GDA 1994 MGA Zone 50

Project: 20PER16294-GM Date: 23/12/2020



Legend

Survey Footprint	Vegetation communities
<i>Paracalaena dixonii</i> (T)	AcAhGp
	AcDdMI
	AcEbHh
	BpDdHh
	EtAhHh
	Cleared



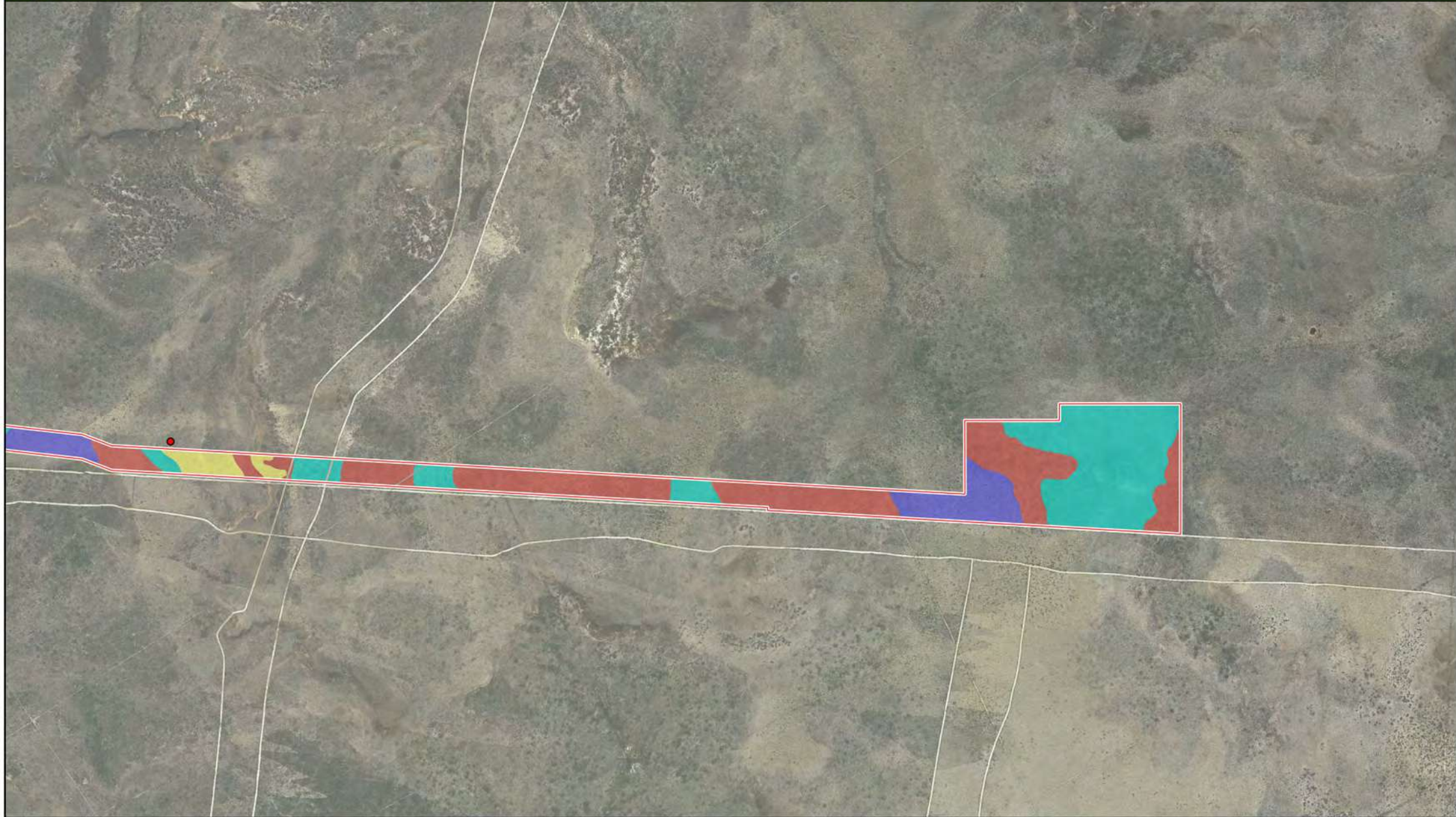
0 125 250 500
Metres

Scale: 1:20,000
Datum/Projection:
GDA 1994 MGA Zone 50

N

eco logical
AUSTRALIA
A TETRA TECH COMPANY

Project: 20PER16294-GM Date: 23/12/2020



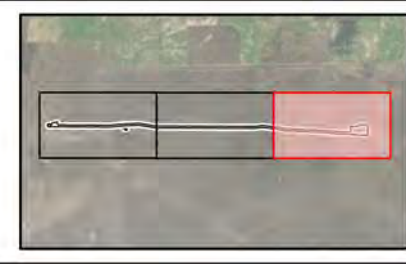
Legend

Survey Footprint

Paracalaena dixonii (T)

Vegetation communities

- AcAhGp
- AcEbHh
- BpDdHh
- EtAhHh
- Cleared



0 125 250 500
Metres

Scale: 1:20,000
Datum/Projection:
GDA 1994 MGA Zone 50

eco logical
AUSTRALIA
A TETRA TECH COMPANY

Project: 20PER16294-GM Date: 23/12/2020