



Licence Holder	Water Corporation
ACN	28 003 434 917
Licence Number	L5976/1991/10
File Number	2010/003112
Category	54 – Sewage Facility
Premises	Carnarvon Wastewater Treatment Plant Babbage Island Road Morgantown WA 6701 Lot 1321 on Plan 193061, portion of Lot 1205 on Plan 240108 and portion of Lot 1146 on Plan 210835.
Date of amendment	22 December 2017

Amendment

The Chief Executive Officer (CEO) of the Department of Water and Environmental Regulation (DWER) has amended the above Licence in accordance with section 59 of the *Environmental Protection Act 1986* as set out in this Amendment Notice. This Amendment Notice constitutes written notice of the amendment in accordance with section 59B(9) of the EP Act and follows.

Date signed: 22 December 2017

Steve Checker

MANAGER LICENSING (WASTE INDUSTRIES)

an officer delegated under section 20 of the Environmental Protection Act 1986 (WA)

Amendment Notice

This amendment is made pursuant to section 59 of the *Environmental Protection Act 1986* (EP Act) to amend the licence issued under the EP Act for a prescribed premises as set out below. This notice of amendment is given under section 59B(9) of the EP Act.

This notice is limited only to an amendment of the following:

1. Rectification of errors in the information submitted by Water Corporation for the upgrade of the reuse scheme infrastructure that is being handed over by the Shire of Carnarvon to Water Corporation. The infrastructure and its operation will now become the responsibility, management and ownership of Water Corporation to ensure that treated wastewater discharged from the premises meets Department of Health infrastructure and discharge requirements.

No other changes to the aspects of the original licence have been requested by the Licence Holder.

The following DWER Guidance Statements have informed the decision made on this amendment:

- *Guidance Statement: Regulatory Principles* (July 2015)
- *Guidance Statement: Land Use Planning* (February 2017)
- *Guidance Statement: Decision Making* (February 2017)
- *Guidance Statement: Risk Assessment* (February 2017)

Amendment Description

Water Corporation initiated an application for an amendment to Licence L5976/1991/10 to rectify errors in information submitted by Water Corporation through an earlier amendment notice. The amendment notice was in relation to the upgrade of the Shire Reuse Scheme infrastructure and a realignment of their prescribed premises boundary to incorporate additional lands under Department of Lands (Lot 1205 on Plan 240108) and Shire of Carnarvon land (Lot 1146 on Plan 210835).

Water Corporation considers the amendments administrative in nature. The detail of each proposed amendment and DWER response is included within Attachment 1 of the Amendment notice.

Background

Water Corporation own and operate the Carnarvon Wastewater Treatment Plant prescribed premises, Category 54 – Sewage facility as defined under Schedule 1 of the *Environmental Protection Regulations 1987*. The plant consists of three stabilisation ponds made up of a primary aeration pond and two maturation ponds. An onsite emergency infiltration basin also exists within the premises boundary along with a sludge drying bed area.

The inlet pipe at the premises is fitted with a screening facility and the area is bunded and filters the waste stream prior to discharge into pond 1. A copper ioniser/doser has been in operation at the Premises since 2006, for use as an algaecide and microbicide, as part of the wastewater treatment process.

The treated wastewater effluent is pumped into the Shire of Carnarvon's reuse storage facility. Reuse accounts for 100% of the effluent discharged from the Water Corporation's facility. On-site infiltration is retained for emergency events and exceptional circumstances only.

Treated wastewater is discharged via the adjacent Shire of Carnarvon reuse scheme to the Town Beach, Northwater Public Open Space, Brockman Park, Football Oval/Festival

Grounds, Van Dongen Park and High School. This effluent reuse is managed under the Recycling Water Supply Agreement (RWSA) (signed 10/03/2011), which is managed by the Department of Health.

Water Corporation undertook an assessment of the Shire of Carnarvon's infrastructure used for the filtration and chlorination of the wastewater from Water Corporations premises and determined that it was in a state of "disrepair" and did "not meet Department of Health requirements under the Reuse Agreement". Water Corporation has therefore agreed to (in consultation and agreement with the Shire of Carnarvon) decommission the old infrastructure and rebuild them to Department of Health standards. The new infrastructure and its operation will fall under the ownership and management of Water Corporation.

The infrastructure upgrade currently underway, as defined under amendment notice 1 (issued on 25 May 2017) will include:

- Installation of a new pump station (located outside of the premises boundary, owned and managed by the Shire of Carnarvon);
- New filtration system;
- New Chlorinator (gaseous); and
- New tanks – 2 x 400kL (to facilitate adequate chlorine holding time).

The existing filtration and chlorination system at the Shire will be decommissioned on completion of the new works upgrade.

Clearing of the additional 0.72 hectares of land was undertaken in accordance with Water Corporations' state-wide clearing permit CPS185/7. No variances with the clearing principles were determined through their assessment process.

The infrastructure will be located on a portion of Lot 1205 on Plan 240108 and a portion of Lot 1146 on Plan 210835 which is land owned by the Shire. The Shire has endorsed through council resolution (FC 17/1/17 / Ref. 5R0105), and signed a letter (4/4/2017) in agreement for Water Corporation to undertake the upgrade of the reuse scheme infrastructure which Water Corporation will then own, operate and maintain in order to supply treated wastewater to the Shire on Shire land (See attached Maps 1-3).

The Carnarvon WWTP and Shire storage ponds are less than 500 metres from residences in the nearby built-up area. Long term plans involve decommissioning the current plant and utilising a new site.

Map 1 below outlines the proposed changes to the prescribed premises boundary. The thick red line defines the new premises boundary with the yellow broken line defining the old section of the previous prescribed premises boundary that has been altered:

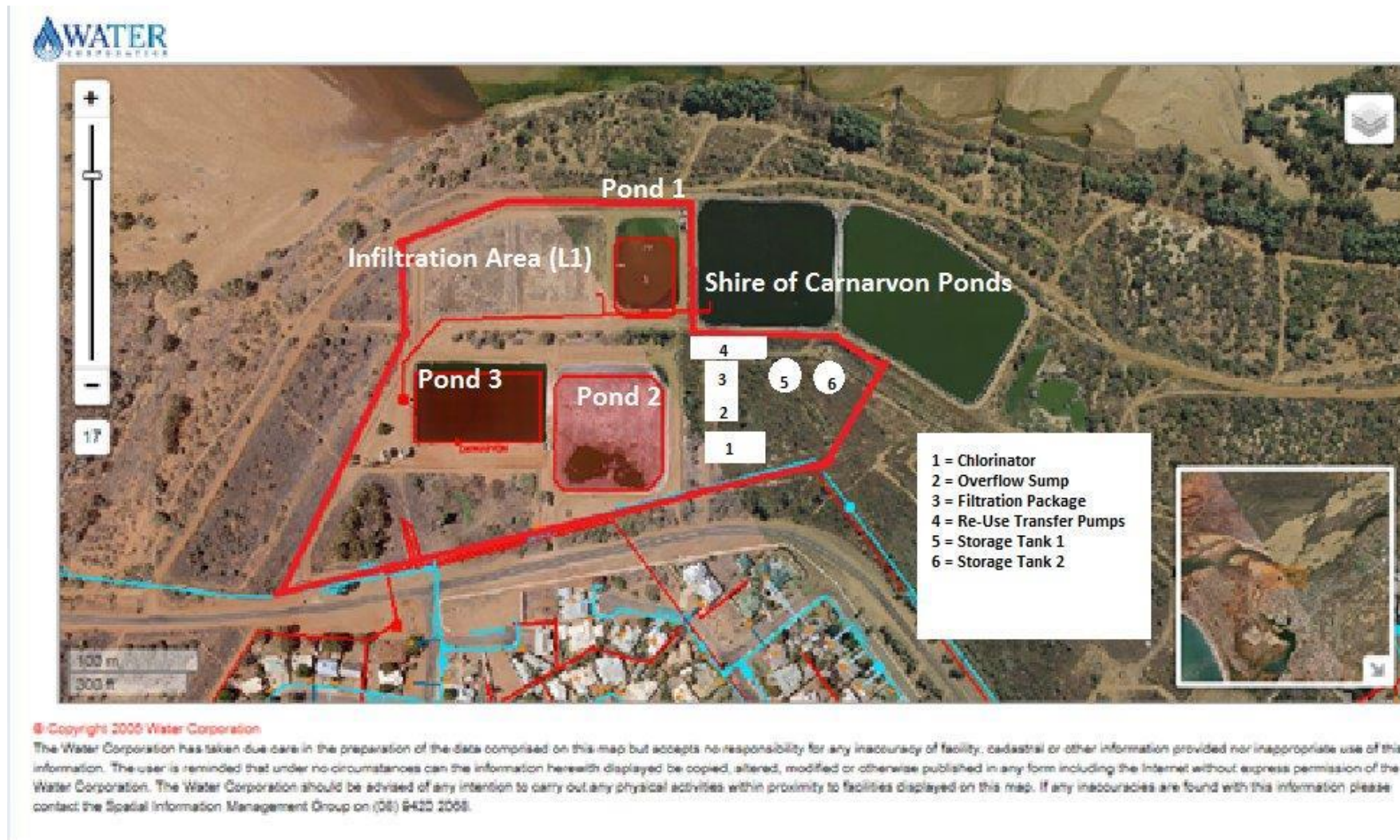


© Copyright 2005 Water Corporation
The Water Corporation has taken due care in the preparation of the data comprised on this map but accepts no responsibility for any inaccuracy of facility, cadastral or other information provided nor inappropriate use of this information. The user is reminded that under no circumstances can the information herewith displayed be copied, altered, modified or otherwise published in any form including the Internet without express permission of the Water Corporation. The Water Corporation should be advised of any intention to carry out any physical activities within proximity to facilities displayed on this map. If any inaccuracies are found with this information please contact the Spatial Information Management Group on (08) 9420 2068.

Map 2 below identifies the yellow hatched area to be cleared:



Map 3 below identifies the location of the new infrastructure and operational assets to replace the old infrastructure used for the filtration and chlorination of wastewater from the Carnarvon Wastewater Treatment Plant:



Attachment 1 identifies the proposed changes as submitted by Water Corporation

Comment no.	Section	Page	License /Amendment condition/wording	Proposed amendment action	Comment
1.	Amendment description	3	'The proposed infrastructure details upgrade will include: - Installation of a new pump station'	Removal of wording	The pump station will be a Shire asset. The Water Corporation is constructing and gifting to the Shire.
2.	Table 5 — Risk assessments for proposed amendments during operation	11	'Emissions to land' reasoning column 'however the premises will include mitigation measures in the event of abnormal operations from the infrastructure with the inclusion of earthen bunds to inhibit flow off the premises from associated infrastructure/pipe works'	Alter condition — remove requirement for earthen bund. The system is set up that Shire storage dam	The current design is sufficient to manage the risk posed by potential emission to land. The system is set up that should there be any failure, pumping from the Shire storage dam ceases. Any water in the pipework or out of spec water in the tanks can then be diverted to the sump which gets pumped back to the WWTP.
3.	Decision	12	'Conditions 1.2.7 and 1.2.8...This will ensure that upgrades undertaken (installing of the irrigation area) are certified as having been constructed in accordance with the Licence requirements'	Removal of reference to 'installing irrigation area'.	Water Corporation is not making any changes to the irrigation area or the assets in the irrigation area as this is managed by the Shire. The Corporation is constructing a new pump station for the Shire so that it can match the demands of the new filtration and chlorination system.
4.	Table 1.2.1 Works Specifications	15	'3. is earthen bunded to mitigate against accidental discharge from the infrastructure under abnormal operating conditions;'	As above in comment 2.	As above in comment 2.
5.	Table 1.2.1 Works Specifications	15	'6. is linked via pipeline network from pond 3 only to receive wastewater for filtration and chlorination purposes prior to discharge to the Shire storage ponds;'	Altered specification — to reflect the actual process flow.	The correct process flow is: WWTP final effluent from pond 3 to Shire Storage Pond to Water Corporation Filtration, disinfection and storage tanks to Shire irrigation pump station to Shire managed irrigation areas
6.	Table 1.3.3 Containment infrastructure	16	'Filtration and chlorination system — treated wastewater — filtration and gaseous chlorination of treated wastewater prior to discharge to Shire of Carnarvon storage ponds for reuse'	Altered specification — to reflect the actual process flow.	Wastewater from the Shire storage pond will be filtered and chlorinated and then pumped to the Water Corporations storage tanks prior to reuse. Chlorinated and filtered water is not pumped to the Shire storage pond.
7.	Table 1.3.3 Containment infrastructure	16	'Storage tanks — treated wastewater — holding tanks for containment of overflow to	Altered specification — to reflect the purpose of the storage tanks.	The storage tanks are to achieve chlorine contact time prior to irrigation.

			sump'		Should this water be out of spec it can be pumped back to the sump and then the wastewater treatment plant. This will occur in an abnormal event.
8.	Table 3.3.1 Monitoring of inputs and outputs	16	'treated wastewater discharge from pond 3 (post chlorination) — final water discharge monitoring point — chlorine — mg/L — monthly — continuous'	Removal of 'continuous' frequency	Treated wastewater from pond 3 is not chlorinated. As detailed in the schedule of the licence the premises process table shows that M3 (SP Carnarvon WWTP Secondary Ponds Discharge) is the final treated water discharge monitoring point from pond 3. The systems (and all low risk wastewater reuse schemes) do not have continuous monitoring — this is not compatible with the water quality. Online continuous chlorine monitoring isn't required for health compliance, rather the system has an interlock to ensure that no water is delivered should chlorination fail as per the MOU between Water Corporation and Department of Health.

Attachment 2 includes DWER response to proposed changes to Licence

Comment no.	Section	Proposed amendment action	DWER Response
1.	Amendment description	Removal of wording	Noted. Additional wording will be included to define this infrastructure as being the property and management of the Shire (pump located off the premises boundary).
2.	Table 5 — Risk assessments for proposed amendments during operation	Alter condition — remove requirement for earthen bund.	Additional justification was received from Water Corporation from Craig Chaudhry via email on 2/11/2017. The defined mitigation measure is will be incorporated within the amendment under Table 1.2.1 within the Licence to identify automatic pressure sensor shut down values within the system which will <u>negate the need for bunding around the infrastructure</u>
3.	Decision	Removal of reference to 'installing irrigation area'.	Paragraph within the 'Decision' section of the Amendment Notice has been amended.
4.	Table 1.2.1 Works Specifications	As above in comment 2.	Additional justification was received from Water Corporation from Craig Chaudhry via email on 2/11/2017. The defined mitigation measure will be incorporated within the amendment to identify automatic pressure sensor shut down values within the system which will negate the need for bunding around the infrastructure identified.
5.	Table 1.2.1 Works Specifications	Altered specification to reflect the actual process flow.	Changed to reflect actual process flow, as re-defined.
6.	Table 1.3.3 Containment infrastructure	Altered specification — to reflect the actual process flow.	Changed to reflect actual process flow, as re-defined.

7.	Table 1.3.3 Containment infrastructure	Altered specification — to reflect the purpose of the storage tanks.	Changed to reflect actual process flow, as re-defined.
8.	Table 3.3.1 Monitoring of inputs and outputs	Removal of 'continuous' frequency	Changed. Monitoring frequency changed to 'Spot sample'.

Other approvals

The Licence Holder has provided the following information relating to other approvals as outlined in Table 1.

Table 1: Relevant approvals

Legislation	Number	Approval
Local Planning approval – Shire of Carnarvon	N/A	Gazettal of the <i>Water Services Act 2012</i> (as gazetted on 18 November 2013) states a 'Development Approval' is not required for the proposed works at the premises. Section 137 of the <i>Water Services Act 2012</i> , identifies that Water Corporation (in its capacity as service provider) is exempt from the requirement to obtain development approvals for Public Service Works.
<i>Environmental Protection (Clearing of Native Vegetation) Regulations 2004</i>	Native Vegetation Clearing permit CPS185/7	Water Corporation has determined that under their Statewide vegetation clearing permit they are not required to obtain any further clearing permits for the clearing of 0.72 hectares of land within their Lot 1321 on Plan 193061 boundary.
Land ownership and infrastructure management - Shire of Carnarvon (Shire)	N/A	Water Corporation submitted a letter co-signed by A/ Chief Executive Officer, Mark Dacombe (Shire) and Manager Water Quality Branch, Rachael Miller (Water Corporation) confirming that Water Corporation will own, operate and maintain the filtration, disinfection and storage assets located on Lot 1321(Shire land) (See Appendix 1).

Location, environmental siting and potential receptors

Table 2 below lists the relevant sensitive land uses in the vicinity of the prescribed premises which may be receptors relevant to the proposed amendment.

Table 2: Receptors and distance from prescribed premises

Residential and sensitive premises	Distance from Prescribed Premises
Residential area	< 500 m south of the prescribed premises boundary

Table 3 below lists the relevant environmental receptors in the vicinity of the prescribed premises which may be receptors relevant to the proposed amendment.

Table 3: Environmental receptors and distance from prescribed premises

Environmental receptors	Distance from Prescribed Premises
Gascoyne River	Approximately 200 m north of the prescribed premises boundary

Risk assessment

The proposed changes are considered administrative and do not change the risk profile or rating of the premises, and do not pose any additional risk to the environment or human health.

The Delegated Officer has determined that no additional risk assessment is required as part of this amendment process.

Decision

The Delegated Officer has determined that the rectification of errors in the information submitted by Water Corporation for the upgrade of the reuse scheme infrastructure is administrative in nature.

The changes to the Licence do not pose any additional risk to the environment or to human health. The relevant changes that have been determined as appropriate by the Delegated Officer and have been defined within Attachment 2.

The proposed changes to the specific sections/ conditions within the Licence have been defined within the 'Amendment' section below, which includes:

- 1) One change within the 'amendment' in relation to point 1 of the requested amendments by Water Corporation. summary section

A change to the location of the new pump station was identified through the amendment process and has been updated to reflect it being outside of the premises boundary, and owned and managed by the Shire of Carnarvon.

The Delegated Officer considers this an administrative change to the Licence and is in accordance with DWER regulatory guidance.

- 2) One change within the 'Decision' summary in relation to point 3 of the requested amendments by Water Corporation. of the amendment

As a result of the change to point 1 above, the Decision summary has also undergone an administrative change to remove wording that is now incorrect in the location of the new pump station infrastructure.

- 3) Two changes within Table 1.2.1 in relation to points 2, 4 and 5 of the requested amendments by Water Corporation. The changes are as a result of an altered specification (process flow) and inclusion of pressure sensor monitoring system.

The Delegated Officer initially considered the construction of the earthen bunds as an appropriate mitigation measure proposed by Water Corporation in the event of an abnormal operation causing discharge from the premises as a result of pipework rupture/failure. The earthen bunds were considered within the original amendment (Amendment Notice 1) as part of the risk assessment in relation to impacts to land, groundwater and surface water.

However, Water Corporation have since identified that the system incorporates pressure sensors which identify an increase or decrease in the infrastructure operation which triggers an alert sent to the operator to attend the site to undertake further investigations. The Delegated Officer considers this approach to be appropriate and adequate for the same purposes as intended through the use of earthen bunds. As a result the earthen bund mitigation measure within Table 1.2.1 has been replaced by the use of in-line pressure sensors.

- 4) Two changes within Table 1.3.3 in relation to point 6 and 7 of the requested amendments by Water Corporation. This is as a result of an altered specification (process flow).

The filtration and chlorination system and storage tank details have been updated due to error in details originally given. The change is considered administrative in nature and ensures that the Licence accurately reflects the activities being undertaken at the premises. The process had not been correctly defined previously.

- 5) One change within Table 3.3.1 in relation to point 8 of the requested amendments by Water Corporation. This is as a result of an altered monitoring frequency due to process design.

The monitoring frequency has been changed from continuous to spot sample. The

process is not designed for continuous monitoring of this parameter. This has been rectified through an administrative change within Table 3.3.1 to more accurately reflect the processes and activities undertaken at the premises.

Amendment History

Table 6 provides the amendment history for L5976/1991/10.

Table 6: Licence amendments

Instrument	Issued	Amendment
L5976/1991/10	25/05/2017	Amendment Notice 1 – Upgrade of filtration and chlorination system and change to premises boundary.
L5976/1991/10	22/12/2017	Amendment Notice 2 – Amendment to undertake administrative changes to information errors submitted by Water Corporation.

Licence Holder's Comments

The Licence Holder was provided with the draft Amendment Notice on 14 November 2017. Comments were received from the Licence Holder, via email on 1 December 2017, and have been considered by the Delegated Officer as shown in Appendix 2.

Amendment

1. The 'Amendment' description section has been amended as shown in the red, italics text below:

The proposed infrastructure details upgrade will include:

- *Installation of a new pump station (located outside of the premises boundary, owned and managed by the Shire of Carnarvon);*
- *New filtration system;*
- *New Chlorinator (gaseous); and*
- *New tanks – 2 x 400kL (over flow to sump).*

2. The 'Decision' section paragraph has been amended as shown in the red, italics strike through text below:

Conditions 1.2.7 and 1.2.8 require the submission of a construction compliance document prior to operation of the premises upgrade and signed by an appropriate person. This will ensure that upgrades undertaken (~~installation of the irrigation area~~) are certified as having been constructed in accordance with the Licence requirements, and that the appropriate testing has been conducted by the proponent for inclusion within the compliance report document.

3. The Table 1.2.1 has been amended as shown in the red, italics and strike through text below:

Table 1.2.1: Works specifications	
Column 1	Column 2
Infrastructure	Specifications (design and construction)
Filtration and Chlorination system (See Map 3)	<p>The Licensee must ensure that the filtration and chlorination area:</p> <ol style="list-style-type: none"> is contained within the premises boundary; is not accessible to the public (non-operational staff) at any time; is earthen bunded to mitigate against accidental discharge from the infrastructure under abnormal operating conditions incorporates pressure sensors on the inlet and outlet of the re-use infrastructure to indicate failures in the scheme infrastructure. The sensors must be connected to a remote communications alert system to notify the operator to attend to the site to address any fault; has signage placed around the boundary of the premises identifying chlorination treatment of wastewater within the premises boundary; includes the installation of a filtration unit, chlorination unit, 2 x 400 kL storage tanks, low permeability (concrete) overflow/ backwash sump/s and transfer pumps; is linked via a pipeline network <i>from WWTP final effluent pond 3 to Shire Storage Pond to Water Corporation Filtration, disinfection and storage tanks to Shire irrigation pump station to Shire managed irrigation areas from pond 3 only to receive wastewater for filtration and chlorination purposes prior to discharge to the Shire storage ponds, outside of the premises boundary;</i> and complies with Department of Health requirements.

4. Table 1.3.3 has been amended as shown in the red, italics and strike through text below:

Table 1.3.3: Containment infrastructure		
Vessel or compound	Material	Requirements
Inlet works	Screening	Stored in a sealed bin which is surrounded by a bunded hardstand area which returns sludge leachate to the start of the treatment process.
Pond 1 (aeration)	Wastewater	Clay lined to achieve a permeability of less than 10 ⁻⁹ m/s or equivalent.
Pond 2 (facultative maturation)	Wastewater	
Pond 3 (maturation)	Treated wastewater	
Infiltration area	Treated wastewater	Unlined, in-situ soils. Used in emergency events only.
Filtration and chlorination system	Treated wastewater	<p>Filtration and gaseous chlorination of treated wastewater prior to discharge to Shire of Carnarvon storage ponds for reuse.</p> <p><i>Wastewater from the Shire storage pond will be filtered and chlorinated and then pumped to the Water Corporations storage tanks prior to reuse off site.</i></p>
Storage tanks	Treated wastewater	Holding tanks for the containment of overflow to sump. <i>To achieve required chlorine contact time prior to irrigation off site.</i>

Sludge drying bed	Sewage sludge	Temporary or permanent infrastructure to consist of a bunded hardstand or lined area (lined to achieve a permeability of less than 10 ⁻⁹ m/s or equivalent), capable of preventing surface run-off of leachate and sludge and which includes a leachate collection system.
-------------------	---------------	---

5. Table 3.3.1 has been amended as shown by the red, italics and strike through text below:

Table 3.3.1: Monitoring of inputs and outputs					
Input/ Output	Monitoring point reference	Parameter¹	Units	Averaging period	Frequency
Wastewater Treatment Plant - Inlet Flow	Inflow meter (M1 – S2042103)	Volumetric flow rate (cumulative)	m ³ /day	Monthly	Continuous
Treated wastewater discharged to Shire of Carnarvon ponds	Outflow meter (M2 - S0037360)	Volumetric flow rate (cumulative)	m ³ /day	Monthly	Continuous
Treated wastewater discharged to on-site infiltration ponds	Outflow meter or mass balance calculation (M3)	Volumetric flow rate (cumulative)	m ³ /day	Monthly	Emergency/ abnormal events only
Treated wastewater discharged from pond 3 (post chlorination)	Final treated water discharge monitoring point	Chlorine	mg/L	Monthly	Continuous <i>Spot sample</i>

Appendix 1: Key Documents

	Document Title	In text ref	Availability
1	Licence amendment application – Carnarvon Wastewater Treatment Plant, received 8 September 2017.	L5976/1991/10 CEO2580/2017/1	DWER records (A1520880/ A1530232)
2	Licence amendment application – PM-#16370598-v1-Carnarvon WWTP - Re-Use Scheme Upgrade Approval Application - 2017	L5976/1991/10	DWER records (A1377434)
3	Email: Carnarvon reuse scheme - Letter to DWER re Licence amendment from Craig Chaudhry, 30/03/2017.	Project No. CS03208 (dated 14/3/17)	DWER records (A1406227) 'Infrastructure ownership and management.'
4	Email: FW: CS03208 Carnarvon Shire Reuse - Shire letter to support DWER licence amendment from Craig Chaudhry, 3/4/2017.	Shire of Carnarvon - Council Resolution (Ref. 5R0105)	DWER records (A1407182)
5	Email: Justification for the removal of earthen bunds, received from Craig Chaudhry, 2/11/2017.	-	DWER records (A1554361)
6	DWER, July 2015. <i>Guidance Statement: Regulatory principles.</i> Department of Environment Regulation, Perth.	DER 2015a	accessed at http://www.der.wa.gov.au
7	DER, October 2015. <i>Guidance Statement: Setting conditions.</i> Department of Environment Regulation, Perth.	DER 2015b	
8	DER, November 2016. <i>Guidance Statement: Risk Assessments.</i> Department of Environment Regulation, Perth.	DER 2016b	
9	DER, November 2016. <i>Guidance Statement: Decision Making.</i> Department of Environment Regulation, Perth.	DER 2016c	

Appendix 2: Summary of Licence Holder comments on draft

Comments received	Issue	DWER consideration of risk
Back Ground Section and Amendment Notice 1 Page 2	<p>Incorrect information: The inlet pipe at the premises is fitted with a grit and screening facility and area is bunded.</p> <p>Note: There is no grit removal in the system</p>	<p>Amended/ Updated.</p> <p>The information has been updated to reflect the current operation of the facility.</p> <p>Reference to 'grit' has been removed from page 2 of the Amendment Notice.</p>
Page 15, 4 Table 1.3.3 and Pages 15 and 16, 4 Table 1.3.4	<p>Incorrect information: There are varying references to Pond 2 (facultative & maturation pond).</p> <p>There are two maturation ponds following the aeration pond.</p> <p>In the Amendment description section, the reference should be to two maturation ponds</p>	<p>Partial amendment.</p> <p>The information has been updated to reflect the current wording used for the operation of the facility, under this amendment submission.</p> <p>Reference to 'facultative' has been removed from page 15, Table 1.3.3 of the Amendment Notice and replaced with maturation.</p> <p>The current active Licence does not include a Table 1.3.4 or within page 16 of the proposed Amendment Notice, therefore no additional change is proposed.</p>
There are many pages in the document where the reference to the Department is written as DER	<p>Administrative change: The reference to the Department should be DWER</p>	<p>No change.</p> <p>The documents referred to under DER were published under Department of Environment Regulation.</p>
Table 1.2.1	<p>Works specification: Wording in Table 1.2.1 works specification 3 is too prescriptive and does not allow for modification during the construction process.</p> <p>The following wording is requested "remote monitoring and communications to ensure shutdown in event of failure."</p>	<p>The wording included within the proposed amendment was discussed and confirmed with the applicant to determine the current correct process operation.</p> <p>Should any change to the current operation occur in the future then the applicant has the ability to apply for an amendment (as per DWER procedures), and with consideration of s53 of the <i>Environmental Protection Act 1986</i>.</p> <p>The Delegated Officer has determined that the wording proposed is therefore accurate and reflects the current operation of the premises. No change to the wording is proposed.</p>