



Licence Number L8734/2013/2

Licence Holder Veolia Environmental Services (Australia) Pty Ltd

ACN 051 316 584

File Number: 2013/000524

Premises
Bibra Technical Waste Transfer Facility
26 Howson Way
BIBRA LAKE WA 6163
Lot 8 on Diagram 53210 as depicted in Schedule 1

Date of Amendment 30 November 2018

Amendment

The Chief Executive Officer (CEO) of the Department of Water and Environmental Regulation (DWER) has amended the above Licence in accordance with section 59 of the *Environmental Protection Act 1986* (EP Act), as set out in this Amendment Notice. This Amendment Notice constitutes written notice of the amendment in accordance with section 59B(9) of the EP Act.

A/MANAGER WASTE INDUSTRIES REGULATORY SERVICES (ENVIRONMENT)

an officer delegated under section 20 of the *Environmental Protection Act 1986* (WA).

Definitions and interpretation

Definitions

In this Amendment Notice, the terms in Table 1 have the meanings defined.

Table 1: Definitions

Term	Definition
ACN	Australian Company Number
Delegated Officer	an officer under section 20 of the EP Act
DWER	Department of Water and Environmental Regulation
EP Act	means the <i>Environmental Protection Act 1986 (WA)</i>
Existing Licence	the Licence issued under Part V, Division 3 of the EP Act and in force prior to this Notice
Licence Holder	as specified at the front of this Notice
Notice	refers to this document
Prescribed Premises	has the same meaning given to that term under the EP Act
Premises	refers to the premises to which this Notice applies, as specified at the front of this Notice

Amendment Notice

This amendment is made pursuant to section 59 of the *Environmental Protection Act 1986* (EP Act) to amend the Licence issued under the EP Act for a prescribed premises as set out below. This notice of amendment is given under section 59B(9) of the EP Act.

This Notice is limited only to an amendment to the prescribed premises boundary.

The following guidance statements have informed the decision made on this amendment:

- *Guidance Statement: Regulatory Principles* (July 2015)
- *Guidance Statement: Decision Making* (February 2017)

Amendment description

Veolia Environmental Services (Australia) Pty Ltd (the Licence Holder) operates a liquid waste facility (category 61) and solid waste facility (61A) at Bibra Technical Waste Transfer Facility (the Premises). The Premises is used for the receipt and storage of controlled waste, the consolidation and storage of packaged controlled waste and the transfer of controlled waste to an approved facility for recycling, treatment or disposal.

The Licence Holder has applied for an amendment to change the prescribed premises boundary to incorporate the whole of Lot 8 on Diagram 53210, to match the current boundaries of the property. This incorporates a warehouse and covered store area which is already constructed and was previously licensed by DWER under L8425/2010/2. The application was received by the Department of Water and Environmental Regulation (DWER) on 22 February 2018.

There will be no construction of additional infrastructure, nor any changes to the activities at the Premises as a result of this amendment.

During the consultation process it was determined that approval from the City of Cockburn was not in place for the Premises, as such, Development Approval was sought. On 20 November 2018 the Licence Holder provided evidence of planning consent dated 19 October 2018 (REF No: 4313394 – DA18/0241).

Amendments have been made to Table 1.2.1 of the Existing Licence to ensure consistency with this Development Approval as detailed in the consultation section below.

Amendment history

Table 2 provides the amendment history for L8734/2013/2.

Table 2: Licence amendments

Instrument	Issued	Amendment
L8734/2013/1	15/05/2013	New application
L8734/2013/1	13/03/2014	Licence amendment to alter waste acceptance criteria
L8734/2013/1	03/12/2015	Licence amendment to align waste acceptance volumes
L8734/2013/2	07/04/2016	Licence reissue
L8734/2013/2	06/05/2016	Administrative amendment to correct commencement date of Licence.
L8734/2013/2	21/08/2017	Licence transferred to Veolia Environmental Services (Australia) Pty Ltd
L8734/2013/2	30/11/2018	Amendment Notice 1 - Premises boundary amended to include the whole of Lot 8 on Diagram 53210 and to align with planning approval

Decision

The Delegated Officer considers the amendment to change the Premises boundary to be administrative in nature and does not alter the emission risk profile.

The Delegated Officer has therefore determined to amend the Existing Licence to reflect the whole of Lot 8 on Diagram 53210.

Consultation

The Application was referred to the City of Cockburn (the City) on 7 March 2018, comments were received on 19 March 2018 advising that no planning approval could be located within the City's record system for a solid and liquid waste management facility at Lot 8 (26) Howson Way, Bibra Lake.

The City also advised that with the proposal being to increase the Prescribed Premises boundary of the facility to encompass the whole of the lot concerned, a planning application will need to be submitted to the City's Statutory Planning Services as planning approval will be needed for such a change.

The Licence Holder has since liaised with the City of Cockburn and obtained a Development Approval on 19 October 2018, a copy of which was provided to DWER on 19 November 2018. Some inconsistencies are apparent between the conditions stipulated in the Development Approval and the Existing Licence as follows:

- “6. Clinical and related waste which is infectious, likely to cause injury to public health or contains human tissue or body parts, and cytotoxic waste material including contaminated sharps shall not be accepted to this facility.*
- 7. No more than 50kg of asbestos or ceramic based fibres with physico-chemical characteristics similar to asbestos, are to be stored at this facility at any one time.*
- 8. Storage of tyres for disposal shall not exceed 20 tyres at any one time”.*

The Existing Licence has been amended to reflect these waste acceptance and processing requirements stipulated in the Development Approval.

Licence Holder's comments

The Licence Holder provided comments on 28 November 2018 requesting controlled waste codes R120 and R140 to be retained on the Licence as these are not clinical, infectious or cytotoxic categories (covered in R100 and R130). The retention of these controlled waste categories will still be compliant with the City of Cockburn planning requirements. The Licence Holder was otherwise happy to proceed and waive the consultation period.

The Notice has been revised to retain the controlled waste categories R120 and R140 as a result. No other changes have been made to the Notice.

Amendment

1. Definitions of the Licence are amended by insertion of the red text shown in underline below:

'Amendment Notice' means an amendment granted under s.59 of the EP Act in accordance with the procedure set out in s.59B of the EP Act.

2. The Licence prescribed premises location is amended from the address below:

Bibra Technical Waste Transfer Facility

~~*Part of Lot 8 on Diagram 53210, 26 Howson Way*~~

BIBRA LAKE WA 6163

~~*Being the area bound between locations 32°11'18"S, 115°80'22"E, 32°11'11"S, 115°80'25"E, 32°11'15"S, 115°80'18"E, 32°11'15"S, 115°80'22"E as depicted in Schedule 1*~~

3. The maps in Schedule 1 of the Existing Licence are removed and replaced by the maps in Schedule 1 of this Notice.
4. Table 1.2.1 in Appendix A of the Existing Licence is amended by the deletion of the text shown in strikethrough below and the insertion of the red text shown in underline below.

Table 1.2.1: Waste acceptance, processing and infrastructure requirements

Waste type	Waste Code	Quantity Limit	Specification¹	Process	Process requirements	Infrastructure requirements
Plating and Heat Treatment						
Waste resulting from the surface treatment of metals and plastics	A100	Combined Premises total of 3,000 tonnes per annum of all liquid wastes accepted	None specified	Receipt, handling, consolidation and storage prior to removal	Waste must be stored and processed in a manner that prevents incompatible wastes mixing	Only to be received, consolidated, stored and handled within an area with hardstanding and bunded to prevent run-off. Storage areas include: <ul style="list-style-type: none"> • Open Store 5; • Unloading zone; • Cover store 1; • Cover store 2; • Cover Store 3; and • Cover store 4. As depicted in Schedule 1
Waste from heat treatment and tempering processes which use cyanide	A110					
Inorganic cyanide	A130					
Acids detailed on next page						
Acidic solutions or acids in solid form	B100	Combined Premises total of 3,000 tonnes per annum of all liquid wastes accepted and combined Premises total of 2,000 tonnes per annual period for all solid wastes accepted	None specified	Receipt, handling, consolidation and storage prior to removal	Waste must be stored and processed in a manner that prevents incompatible wastes mixing	Only to be received, consolidated, stored and handled within an area with hardstanding and bunded to prevent run-off. Storage areas include: <ul style="list-style-type: none"> • Open Store 5; • Unloading zone; • Cover store 1;

Table 1.2.1: Waste acceptance, processing and infrastructure requirements

Waste type	Waste Code	Quantity Limit	Specification¹	Process	Process requirements	Infrastructure requirements
						<ul style="list-style-type: none"> • Cover store 2; • Cover Store 3; and • Cover store 4. As depicted in Schedule 1
Alkalis						
Basic (alkaline) solution or bases (alkalis) in solid form	C100	Combined Premises total of 3,000 tonnes per annum of all liquid wastes accepted and combined Premises total of 2,000 tonnes per annual period for all solid wastes accepted	None specified	Receipt, handling, consolidation and storage prior to removal	Waste must be stored and processed in a manner that prevents incompatible wastes mixing	Only to be receipted, consolidated, stored and handled within an area with hardstanding and bunded to prevent run-off. Storage areas include: <ul style="list-style-type: none"> • Open Store 5; • Unloading zone; • Cover store 1; • Cover store 2; • Cover Store 3; and • Cover store 4. As depicted in Schedule 1
Inorganic Chemicals						
Metal carbonyls	D100	Combined Premises total of 3,000 tonnes per annum of all liquid	None specified	Receipt, handling, consolidation and storage	Waste must be stored and processed in a manner that	Only to be receipted, consolidated, stored and handled within an area with
Inorganic fluorine compounds (excluding calcium fluoride)	D110					

Table 1.2.1: Waste acceptance, processing and infrastructure requirements

Waste type	Waste Code	Quantity Limit	Specification¹	Process	Process requirements	Infrastructure requirements
<i>Mercury and mercury compounds</i>	<i>D120</i>	<i>wastes accepted and combined Premises total of 2,000 tonnes per annual period for all solid wastes accepted</i>		<i>prior to removal</i>	<i>prevents incompatible wastes mixing</i>	<i>hardstanding and bunded to prevent run-off. Storage areas include:</i> <ul style="list-style-type: none"> <i>• Open Store 5;</i> <i>• Unloading zone;</i> <i>• Cover store 1;</i> <i>• Cover store 2;</i> <i>• Cover Store 3;</i> <i>and</i> <i>• Cover store 4.</i> <i>As depicted in Schedule 1</i>
<i>Arsenic and arsenic compounds</i>	<i>D130</i>					
<i>Chromium compounds</i>	<i>D140</i>					
<i>Tannery waste containing chromium</i>	<i>D141</i>					
<i>Cadmium and cadmium compounds</i>	<i>D150</i>					
<i>Used nickel cadmium batteries</i>	<i>D151</i>					
<i>Beryllium and beryllium compounds</i>	<i>D160</i>					
<i>Antimony and antimony compounds</i>	<i>D170</i>					
<i>Thallium and thallium compounds</i>	<i>D180</i>					
<i>Copper compounds</i>	<i>D190</i>					
<i>Cobalt compounds</i>	<i>D200</i>					
<i>Nickel compounds</i>	<i>D210</i>					
<i>Used nickel metal hydride batteries</i>	<i>D211</i>					
<i>Lead and lead compounds</i>	<i>D220</i>					
<i>Used lead acid batteries</i>	<i>D221</i>					
<i>Zinc compounds</i>	<i>D230</i>					
<i>Selenium and selenium compounds</i>	<i>D240</i>					
<i>Tellurium and tellurium compounds</i>	<i>D250</i>					

Table 1.2.1: Waste acceptance, processing and infrastructure requirements

Waste type	Waste Code	Quantity Limit	Specification¹	Process	Process requirements	Infrastructure requirements
<i>Vanadium compounds</i>	<i>D270</i>	<i>Combined Premises total of 3,000 tonnes per annum of all liquid wastes accepted and combined Premises total of 2,000 tonnes per annual period for all solid wastes accepted</i>	<i>None specified</i>	<i>Receipt, handling, consolidation and storage prior to removal</i>	<i>Waste must be stored and processed in a manner that prevents incompatible wastes mixing</i>	<i>Only to be receipted, consolidated, stored and handled within an area with hardstanding and bunded to prevent run-off. Storage areas include:</i> <ul style="list-style-type: none"> • <i>Open Store 5;</i> • <i>Unloading zone;</i> • <i>Cover store 1;</i> • <i>Cover store 2;</i> • <i>Cover Store 3;</i> • <i>and</i> • <i>Cover store 4.</i> <i>As depicted in Schedule 1</i>
<i>Barium and barium compounds</i>	<i>D290</i>					
<i>Non-toxic salts</i>	<i>D300</i>					
<i>Boron compounds</i>	<i>D310</i>					
<i>Inorganic sulfides</i>	<i>D330</i>					
<i>Perchlorates</i>	<i>D340</i>					
<i>Chlorates</i>	<i>D350</i>					
<i>Phosphorus compounds excluding mineral phosphates</i>	<i>D360</i>					
Reactive Chemicals						
<i>Waste containing peroxides excluding hydrogen peroxide</i>	<i>E100</i>	<i>Combined Premises total of 3,000 tonnes per annum of all liquid wastes accepted</i>	<i>Waste of an explosive nature not subject to other legislation is limited to oxidising solids and liquids</i>	<i>Receipt, handling, consolidation and storage prior to removal</i>	<i>Waste must be stored and processed in a manner that prevents incompatible wastes mixing</i>	<i>Only to be receipted, consolidated, stored and handled within an area with hardstanding and bunded to prevent run-off. Storage areas include:</i> <ul style="list-style-type: none"> • <i>Open Store 5;</i> • <i>Unloading zone;</i> • <i>Cover store 1;</i> • <i>Cover store 2;</i> • <i>Cover Store 3;</i>
<i>Waste of an explosive nature not subject to other legislation</i>	<i>E120</i>					
<i>Highly reactive chemicals not otherwise specified</i>	<i>E130</i>					

Table 1.2.1: Waste acceptance, processing and infrastructure requirements

Waste type	Waste Code	Quantity Limit	Specification¹	Process	Process requirements	Infrastructure requirements
						and <ul style="list-style-type: none"> Cover store 4. As depicted in Schedule 1
Paints, Resins, Inks and Organic Sludge						
Aqueous-based wastes from the production, formulation and use of inks, dyes, pigments, paints, lacquers and varnish	F100	Combined Premises total of 3,000 tonnes per annum of all liquid wastes accepted	None specified	Receipt, handling, consolidation and storage prior to removal	Waste must be stored and processed in a manner that prevents incompatible wastes mixing	Only to be receipted, consolidated, stored and handled within an area with hardstanding and bunded to prevent run-off. Storage areas include: <ul style="list-style-type: none"> Open Store 5; Unloading zone; Cover store 1; Cover store 2; Cover Store 3; and Cover store 4. As depicted in
Aqueous-based wastes from the production, formulation and use of resins, latex, plasticisers, glues and adhesives	F110					
Solvent based-wastes from the production, formulation and use of inks, dyes, pigments, paints, lacquers and varnish	F120					
Solvent based wastes from the production, formulation and use of resins, latex, plasticisers, glues and adhesives	F130					
Organic Solvents						
Ethers & highly flammable hydrocarbons	G100	Combined Premises total of	None specified	Receipt, handling,	Waste must be stored and	As depicted in

Table 1.2.1: Waste acceptance, processing and infrastructure requirements

Waste type	Waste Code	Quantity Limit	Specification¹	Process	Process requirements	Infrastructure requirements	
Non-halogenated organic solvents	G110	3,000 tonnes per annum of all liquid wastes accepted		consolidation and storage prior to removal	processed in a manner that prevents incompatible wastes mixing.	Schedule 1	
Dry-cleaning wastes containing perchloroethylene	G130						
Halogenated organic Solvents not otherwise specified	G150						
Waste from production, use and formulation of organic solvents not otherwise specified	G160	Combined Premises total of 3,000 tonnes per annum of all liquid wastes accepted	None specified	Receipt, handling, consolidation and storage prior to removal	Waste must be stored and processed in a manner that prevents incompatible wastes mixing	Only to be receipted, consolidated, stored and handled within an area with hardstanding and bunded to prevent run-off. Storage areas include: <ul style="list-style-type: none"> • Open Store 5; • Unloading zone; • Cover store 1; • Cover store 2; • Cover Store 3; and • Cover store 4. As depicted in Schedule 1	
Pesticides							
Waste from the production, formulation or use of biocides and phytopharmaceuticals	H100	Combined Premises total of 3,000 tonnes per annum of all liquid wastes accepted	None specified	Receipt, handling, consolidation and storage prior to removal	Waste must be stored and processed in a manner that prevents incompatible wastes mixing		
Organic phosphorous compounds	H110						
Organochlorine pesticides	H130						
Waste wood preserving chemicals	H170						
Oils							
Waste mineral oils unfit for their intended purpose	J100	Combined Premises total of 3,000 tonnes per annum of all liquid	None specified	Receipt, handling, consolidation and storage	Waste must be stored and processed in a manner that	Only to be receipted, consolidated, stored and handled within an area with	
Waste oil and water mixtures or emulsions, and	J120						

Table 1.2.1: Waste acceptance, processing and infrastructure requirements

Waste type	Waste Code	Quantity Limit	Specification¹	Process	Process requirements	Infrastructure requirements
<i>hydrocarbon and water mixtures or emulsions</i>		<i>wastes accepted and combined Premises total of 2,000 tonnes per annual period for all solid wastes accepted.</i>		<i>prior to removal</i>	<i>prevents incompatible wastes mixing</i>	<i>hardstanding and bunded to prevent run-off. Storage areas include:</i> <ul style="list-style-type: none"> • <i>Open Store 5;</i> • <i>Unloading zone;</i> • <i>Cover store 1;</i> • <i>Cover store 2;</i> • <i>Cover Store 3;</i> <i>and</i> • <i>Cover store 4.</i> <i>As depicted in Schedule 1</i>
<i>Oil interceptor wastes</i>	<i>J130</i>					
<i>Waste tarry residues arising from refining, distillation or pyrolytic treatment</i>	<i>J160</i>					
<i>Used oil filters</i>	<i>J170</i>					
<i>Oil sludge</i>	<i>J180</i>					
Industrial Wash Water						
<i>Car and truck wash waters</i>	<i>L100</i>	<i>Combined Premises total of 3,000 tonnes per annum of all liquid wastes accepted</i>	<i>None specified</i>	<i>Receipt, handling, consolidation and storage prior to removal</i>	<i>Waste must be stored and processed in a manner that prevents incompatible wastes mixing.</i>	<i>Only to be receipted, consolidated, stored and handled within an area with hardstanding and bunded to prevent run-off. Storage areas include:</i> <ul style="list-style-type: none"> • <i>Open Store 5;</i> • <i>Unloading zone;</i> • <i>Cover store 1;</i> • <i>Cover store 2;</i> • <i>Cover Store 3;</i> <i>and</i> • <i>Cover store 4.</i> <i>As depicted in Schedule 1</i>
<i>Industrial wash waters contaminated with a controlled waste</i>	<i>L150</i>					

Table 1.2.1: Waste acceptance, processing and infrastructure requirements

Waste type	Waste Code	Quantity Limit	Specification¹	Process	Process requirements	Infrastructure requirements
Organic Chemicals						
Waste substances and articles containing polychlorinated biphenyls (PCBs)	M100	Combined Premises total of 3,000 tonnes per annum of all liquid wastes accepted	None specified	Receipt, handling, consolidation and storage prior to removal	Waste must be stored and processed in a manner that prevents incompatible wastes mixing.	Only to be received, consolidated, stored and handled within an area with hardstanding and bunded to prevent run-off. Storage areas include: <ul style="list-style-type: none"> • Open Store 5; • Unloading zone; • Cover store 1; • Cover store 2; • Cover Store 3; and • Cover store 4. As depicted in Schedule 1
Waste substances and articles containing polybrominated biphenyls (PBB), polychlorinated naphthalenes (PCN), and/or polychlorinated terphenyls (PCT)	M105					
Non-halogenated organic chemicals	M130	Combined Premises total of 3,000 tonnes per annum of all liquid wastes accepted	None specified	Receipt, handling, consolidation and storage prior to removal	Waste must be stored and processed in a manner that prevents incompatible wastes mixing	Only to be received, consolidated, stored and handled within an area with hardstanding and bunded to prevent run-off. Storage areas include: <ul style="list-style-type: none"> • Open Store 5; • Unloading zone; • Cover store 1; • Cover store 2;
Phenols, phenol compounds including halogenated phenols	M150					
Organohalogen compounds not elsewhere listed	M160					
Polychlorinated dibenzofuran (any congener)	M170					
Polychlorinated dibenzo p-	M180					

Table 1.2.1: Waste acceptance, processing and infrastructure requirements

Waste type	Waste Code	Quantity Limit	Specification¹	Process	Process requirements	Infrastructure requirements
<i>dioxin (any congener)</i>						<ul style="list-style-type: none"> • Cover Store 3; and • Cover store 4. As depicted in Schedule 1
<i>Cyanides (organic)/nitriles</i>	M210					
<i>Isocyanate compounds</i>	M220					
<i>Triethylamine catalysts</i>	M230					
<i>Surfactants and detergents</i>	M250					
<i>Highly odorous organic chemicals including mercaptans and acrylates</i>	M260					
Soils and Sludge						
<i>Containers or drums contaminated with residues of a controlled waste</i>	N100	<i>Combined Premises total of 3,000 tonnes per annum of all liquid wastes accepted and combined Premises total of 2,000 tonnes per annual period for all solid wastes accepted.</i>	<i>None specified</i>	<i>Receipt, handling, consolidation and storage prior to removal</i>	<i>Waste must be stored and processed in a manner that prevents incompatible wastes mixing.</i>	
<i>Soils contaminated with a controlled waste</i>	N120	<i>Combined Premises total of 3,000 tonnes per annum of all liquid wastes accepted and combined Premises total of 2,000 tonnes per annual period for all solid wastes</i>	<i>None specified</i>	<i>Receipt, handling, consolidation and storage prior to removal</i>	<i>Waste must be stored and processed in a manner that prevents incompatible wastes mixing</i>	<i>Only to be receipted, consolidated, stored and handled within an area with hardstanding and bunded to prevent run-off. Storage areas include:</i> <ul style="list-style-type: none"> • Open Store 5; • Unloading zone;
<i>Fire debris or fire wash waters</i>	N140					
<i>Fly ash excluding fly ash generated from Australian coal fired power stations</i>	N150					
<i>Encapsulated, chemically fixed, solidified or</i>	N160					

Table 1.2.1: Waste acceptance, processing and infrastructure requirements

Waste type	Waste Code	Quantity Limit	Specification¹	Process	Process requirements	Infrastructure requirements
<i>polymerised controlled wastes</i>		<i>accepted.</i>				<ul style="list-style-type: none"> • Cover store 1; • Cover store 2; • Cover Store 3; and • Cover store 4. As depicted in Schedule 1
<i>Filter cake containing a controlled waste</i>	<i>N190</i>					
<i>Industrial waste treatment plant residues</i>	<i>N205</i>					
<i>Asbestos</i>	<i>N220</i>					
<i>Ceramic based fibres similar to asbestos</i>	<i>N230</i>					
					<p><u>No more than 50kg to be stored on site at any one time.</u></p> <p><u>Waste must be stored and processed in a manner that prevents incompatible wastes mixing.</u></p>	
<i>Clinical and Pharmaceutical</i>						
<i>Clinical and related wastes</i>	<i>R100</i>	<i>Combined Premises total of 3,000 tonnes per annum of all liquid wastes accepted and combined Premises total of 2,000 tonnes per</i>	<i>None specified</i>	<i>Receipt, handling, consolidation and storage prior to removal</i>	<i>Waste must be stored and processed in a manner that prevents incompatible wastes mixing</i>	
<i>Waste pharmaceuticals, drugs and medicines</i>	<i>R120</i>					
<i>Cytotoxic waste</i>	<i>R130</i>					

Table 1.2.1: Waste acceptance, processing and infrastructure requirements

Waste type	Waste Code	Quantity Limit	Specification¹	Process	Process requirements	Infrastructure requirements
Waste from production or preparation of pharmaceutical products	R140	annual period for all solid wastes accepted.				
Miscellaneous						
Waste chemical substances arising from research and development or teaching activities	T100	Combined Premises total of 3,000 tonnes per annum of all liquid wastes accepted and combined Premises total of 2,000 tonnes per annual period for all solid wastes accepted.	None specified	Receipt, handling, consolidation and storage prior to removal	Waste must be stored and processed in a manner that prevents incompatible wastes mixing.	Only to be receipted, consolidated, stored and handled within an area with hardstanding and bunded to prevent run-off. Storage areas include: <ul style="list-style-type: none"> • Open Store 5; • Unloading zone; • Cover store 1; • Cover store 2; • Cover Store 3; and • Cover store 4. As depicted in Schedule 1
Waste from production or formulation of photographic chemicals or processing materials.	T120					
Used tyres	T140			Receipt, handling and temporary storage prior to removal	No more than 400 <u>20</u> used tyres to be stored on site at any one time	

Note 1: Additional requirements for the acceptance of controlled waste are set out in the *Environmental Protection (Controlled Waste) Regulations 2004*.

Schedule 1: Maps

Premises map

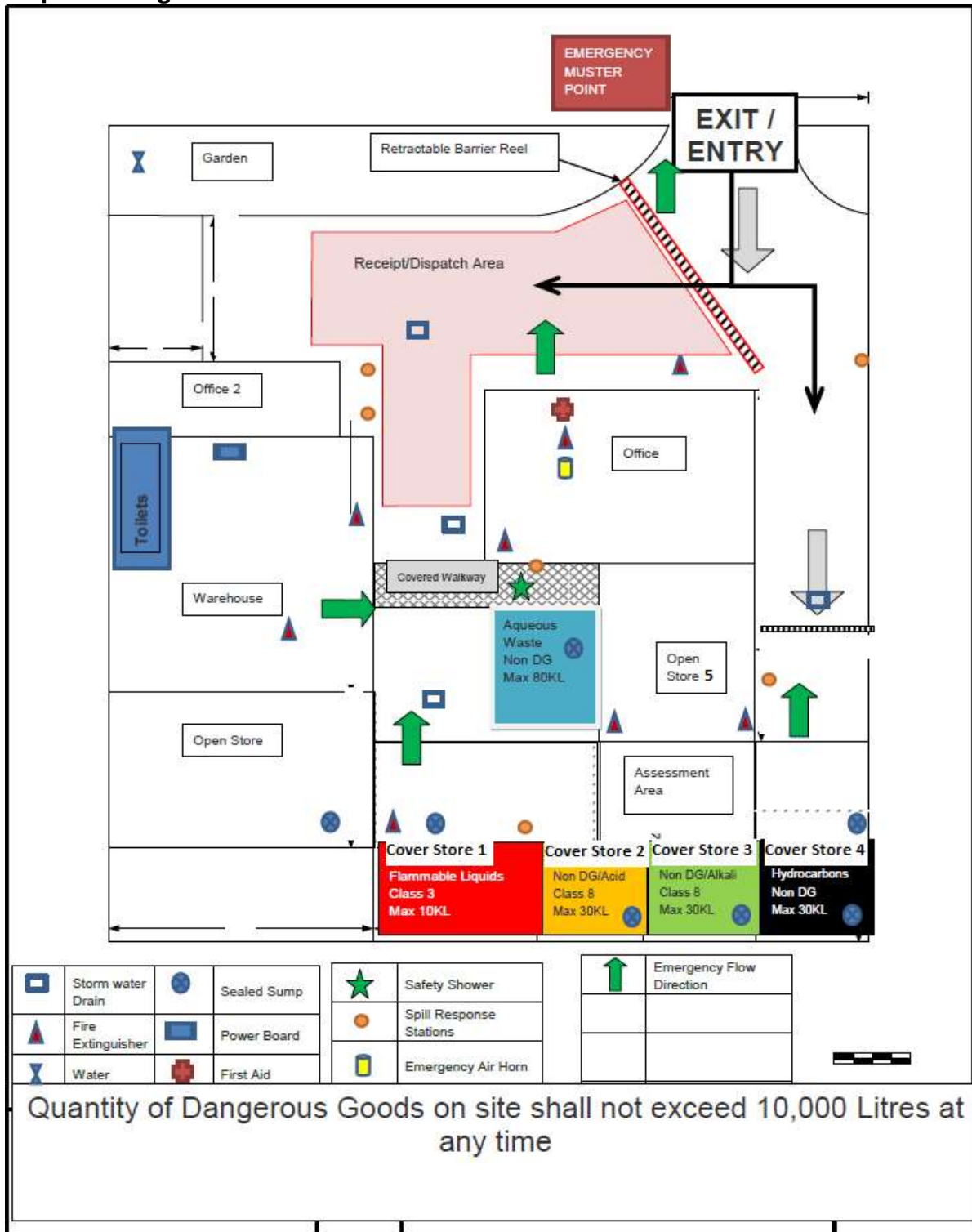
The premises is shown in the map below. The pink line depicts the Premises boundary.



Licence: L8734/2013/2

IR-T07 Amendment Notice (Minor) v2.0 (July 2017)

Map of storage locations



Appendix 1: Key documents

	Document title	In text ref	Availability
1.	Licence 8734/2013/2 – Bibra Technical Waste Transfer Facility	L8734/2013/2	accessed at www.dwer.wa.gov.au
2.	Application Form (Licence Amendment) received 22 February 2018 from Veolia Environmental Services (Australia) Pty Ltd	Application	DWER records (A1622679)
3.	City of Cockburn Development Approval dated 19 October 2018	Development Approval	DWER records (A1740927)
4.	Licence Holder comments received by email dated 28 November 2018	Licence Holder Comments	DWER records (A1743293)
5.	DER, July 2015. <i>Guidance Statement: Regulatory Principles.</i> Department of Environment Regulation, Perth.	DER 2015a	accessed at www.dwer.wa.gov.au
6.	DER, November 2016. <i>Guidance Statement: Risk Assessments.</i> Department of Environment Regulation, Perth.	DER 2016b	
7.	DER, November 2016. <i>Guidance Statement: Decision Making.</i> Department of Environment Regulation, Perth.	DER 2016c	