



W.A. LIMESTONE

www.walimestone.com

Wednesday, 28 August 2024

**WORKS APPROVAL APPLICATION (FORMERLY W5844/2015/1)
EXMOUTH LIMESTONE MINE, MINING LEASE M 08/145, EXMOUTH WA 6707**

WA Limestone, on behalf of Exmouth Limestone Pty Ltd seeks Works Approval to undertake the crushing and screening of limestone at the above premises.

The prescribed premises activities have been assessed multiple times by the department since Works Approval was first issued in 1998, and most recently in 2015 with the issuing of Works Approval W5844/2015/1.

WA Limestone has recently been appointed as the operator of the Exmouth Limestone Mine and seeks re-approval of the premises in accordance with W5844, with the following amendments.

Applicant / Works Approval Holder

WA Limestone will be the operator of the project, under a Letter of Operational Control issued by Exmouth Limestone Pty Ltd.

WA Limestone is the largest operator and producer of limestone in Western Australia with more than 50 years experience operating projects such as the Exmouth Limestone Mine. WA Limestone's environmental management has been independently certified to ISO 14001 since 2015 and our environmental performance has been recognised through a number of industry awards.

Proposed Activities

The recommencement of the project does not require or propose any changes to the site activities from what was previously approved and operated.

No works associated with the barge loading facility are required or proposed. All prescribed project activities being limited to the existing approved mine area within Mining Lease 08/145.

Throughput

WA Limestone proposes to reduce the project throughput from the previously approved 1,000,000 tonnes per year to 500,000 tonnes per year.

The reduction in throughput is based on the project operating on a campaign basis to produce limestone aggregates, with sales from stockpiled material to occur between campaign's, to align with the current market demand in the region.

WA Limestone also proposes to utilise smaller mobile crushing and screening plant with lower throughput capacity from that previously proposed and approved. This decision is based on improvements in plant efficiency, recognition of the geographic constraints of the site, and WA Limestone's desire to minimise the clearing of native vegetation, and noise and dust emissions.

WA Limestone proposes to operate a mobile jaw crusher and screen, with a combined throughput of 150 tonnes per hour. Based on a maximum operating scenario of 10 hours per day, 6 days per week, this equates to a maximum theoretical throughput of 500,000 tonnes per year.

Construction and commissioning

The quarry is established with crushing and screening previously undertaken at the site. Minimal construction works are therefore required to support the recommencement of crushing and screening activities.

Works associated with this works approval will be limited to repairing the access road and existing processing area pad in the floor of the quarry pit, and organising existing stockpiled material within the site.

Should you have any queries or require further information, please contact

[Redacted]

[Redacted]

[Redacted]

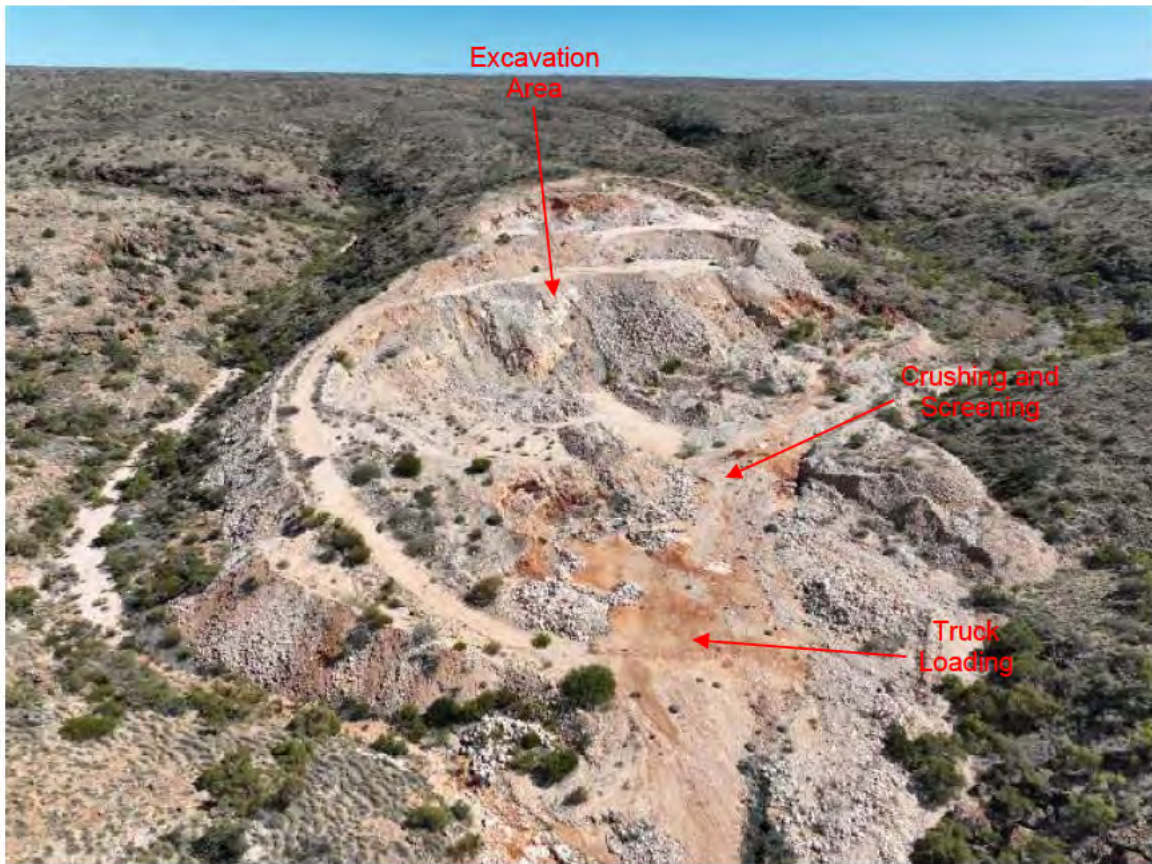


Figure 1: Quarry Area

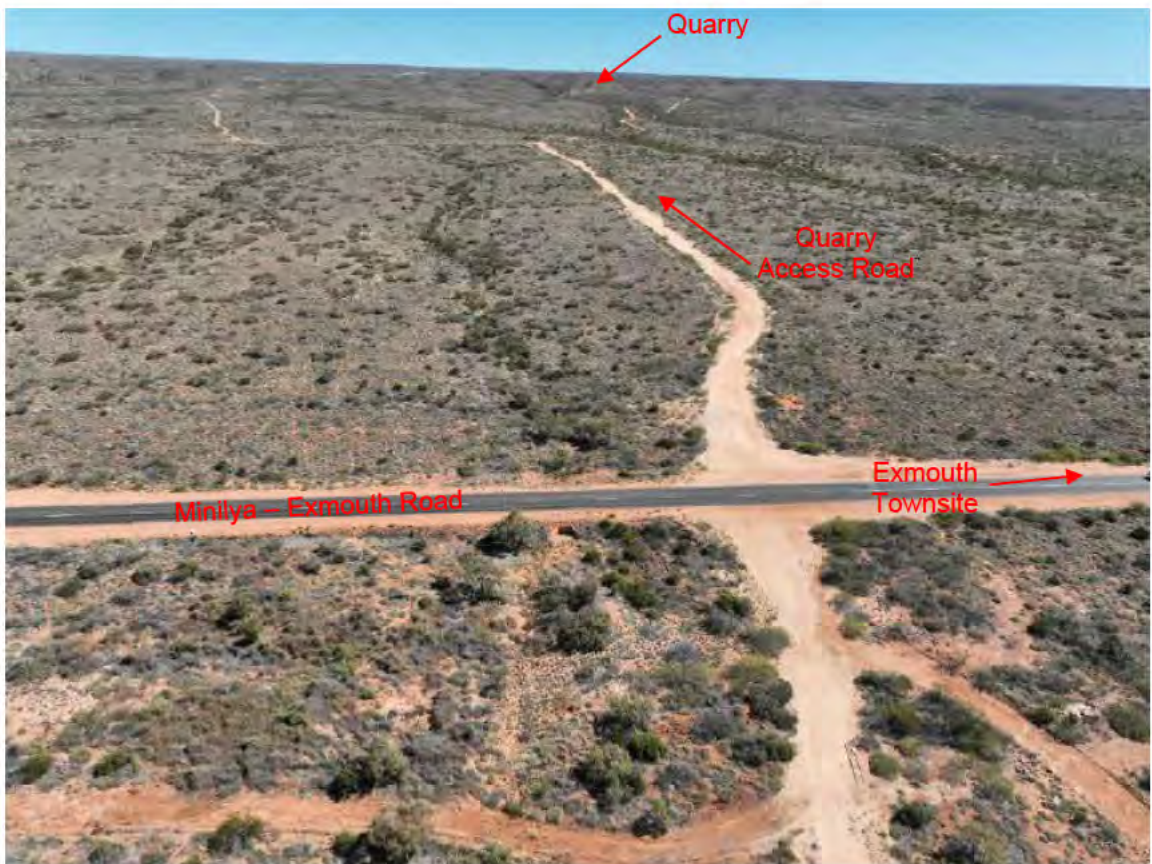


Figure 2: Access Road