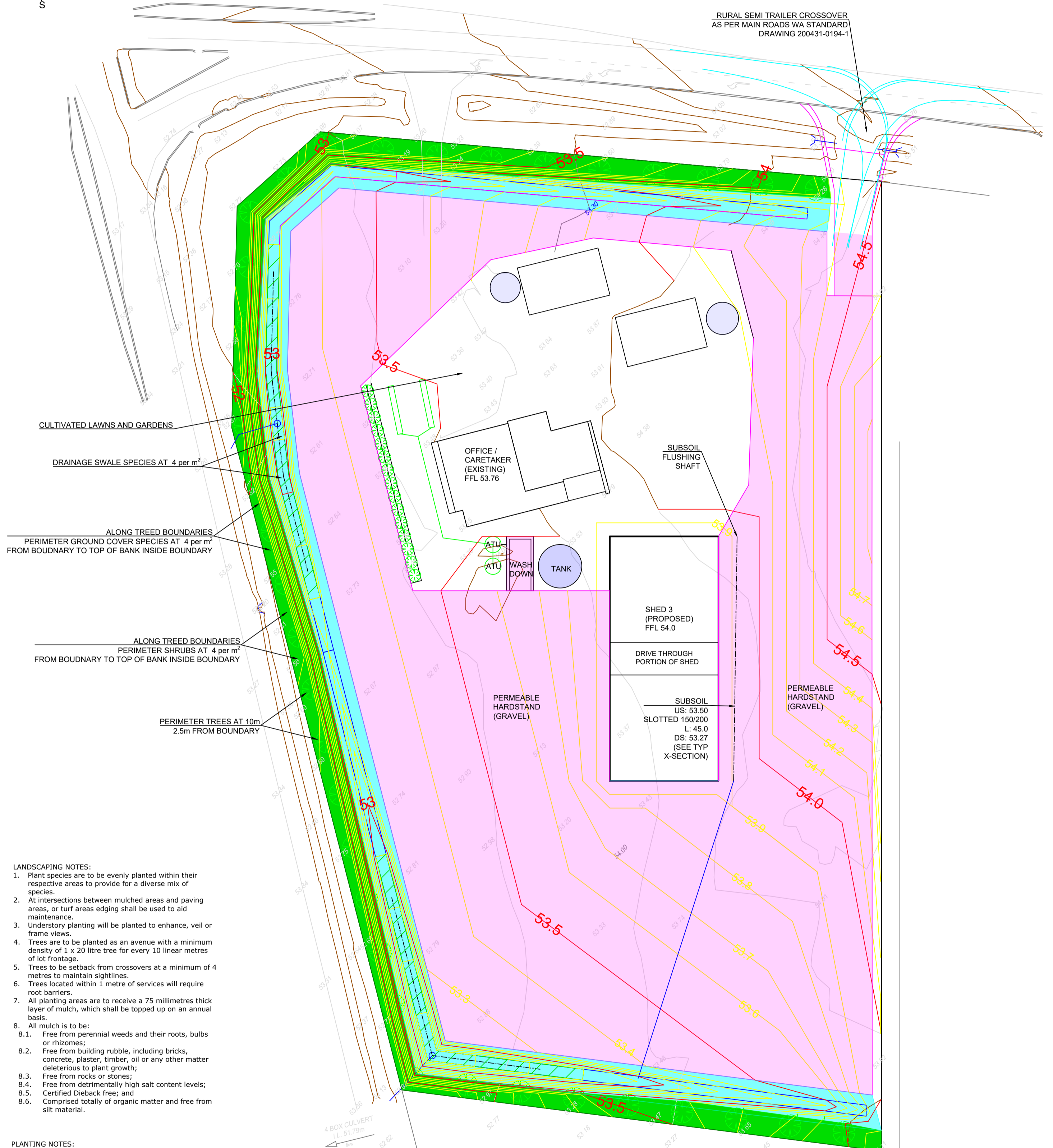


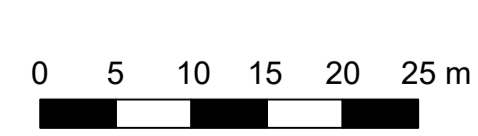
RURAL SEMI TRAILER CROSSOVER
AS PER MAIN ROADS WA STANDARD
DRAWING 200431-0194-1



- CULTIVATED LAWNS AND GARDENS
- DRAINAGE SWALE SPECIES AT 4 per m²
- ALONG TREED BOUNDARIES
PERIMETER GROUND COVER SPECIES AT 4 per m²
FROM BOUNDARY TO TOP OF BANK INSIDE BOUNDARY
- ALONG TREED BOUNDARIES
PERIMETER SHRUBS AT 4 per m²
FROM BOUNDARY TO TOP OF BANK INSIDE BOUNDARY
- PERIMETER TREES AT 10m
2.5m FROM BOUNDARY

- LANDSCAPING NOTES:**
1. Plant species are to be evenly planted within their respective areas to provide for a diverse mix of species.
 2. At intersections between mulched areas and paving areas, or turf areas edging shall be used to aid maintenance.
 3. Understorey planting will be planted to enhance, veil or frame views.
 4. Trees are to be planted as an avenue with a minimum density of 1 x 20 litre tree for every 10 linear metres of lot frontage.
 5. Trees to be setback from crossovers at a minimum of 4 metres to maintain sightlines.
 6. Trees located within 1 metre of services will require root barriers.
 7. All planting areas are to receive a 75 millimetres thick layer of mulch, which shall be topped up on an annual basis.
 8. All mulch is to be:
 - 8.1. Free from perennial weeds and their roots, bulbs or rhizomes;
 - 8.2. Free from building rubble, including bricks, concrete, plaster, timber, oil or any other matter deleterious to plant growth;
 - 8.3. Free from rocks or stones;
 - 8.4. Free from detrimentally high salt content levels;
 - 8.5. Certified Dieback free; and
 - 8.6. Comprised totally of organic matter and free from silt material.

- PLANTING NOTES:**
- TREE SPECIES**
- 36 BLACK BUTT (EUCALYPTUS CLELANDII MAIDEN) 20 ltr INSTALLATION SIZE.
- SHRUB SPECIES (4 per m² => 6,604 OVER 1,651 m²), 1651 OF EACH:**
- ACACIA PULCHELLA
 - BAECKEA CAMPHOROSMAE
 - LESCHENAUZIA BILBOA
 - LESCHENAUZIA FLORIBUNDA
- GROUND COVER SPECIES (4 per m² => 6,604 OVER 1,651 m²), 1651 OF EACH:**
- BANKSIA BLECHNIFOLIA
 - GREVILLEA GUERCIFOLIA
 - HERMIANDRA PUNGENS
 - HIBBERTIA RACEMOSA
- DRAINAGE SWALE (4 PER 1m² => 7,728 OVER 1,932m²), 966 OF EACH:**
- KNOTTED CLUB RUSH (FICINIA NODOSA)
 - SWAN RIVER MYRTLE (HYPOCALYMMMA ROBUSTRUM)
 - LEPIDOSPERMA LONGITUDINALE
 - PALE RUSH (JUNCUS PALLIDUS)
 - BAUMEA JUNCEA
 - BAUMEA PREISSII
 - ANGLED LOBELIA (LOBELIA ANCEPS)
 - MEEBOLDINA COANGUSTATA



28/3/2019	INITIAL DESIGN
DATE	AMENDMENT