



ASPHALTECH

LICENCE APPLICATION

Part Lot 55 Sutherland Way, Picton, WA, 6229 Dec 2024



ATTACHMENT 6B

WASTE ACCEPTANCE



Contents

6B.1 Background 3
6B.2 Waste Acceptance Location 4



6B.1 Background

“Waste” in this application will be referred to “Reclaimed Asphalt Pavement (RAP)”.

The proposed plant is anticipated to include a production upgrade to incorporate recycling solutions when there is enough recycling material and therefore recycling of asphalt becomes viable. However, it is important that the declaration to recycle asphalt be made now in this application.

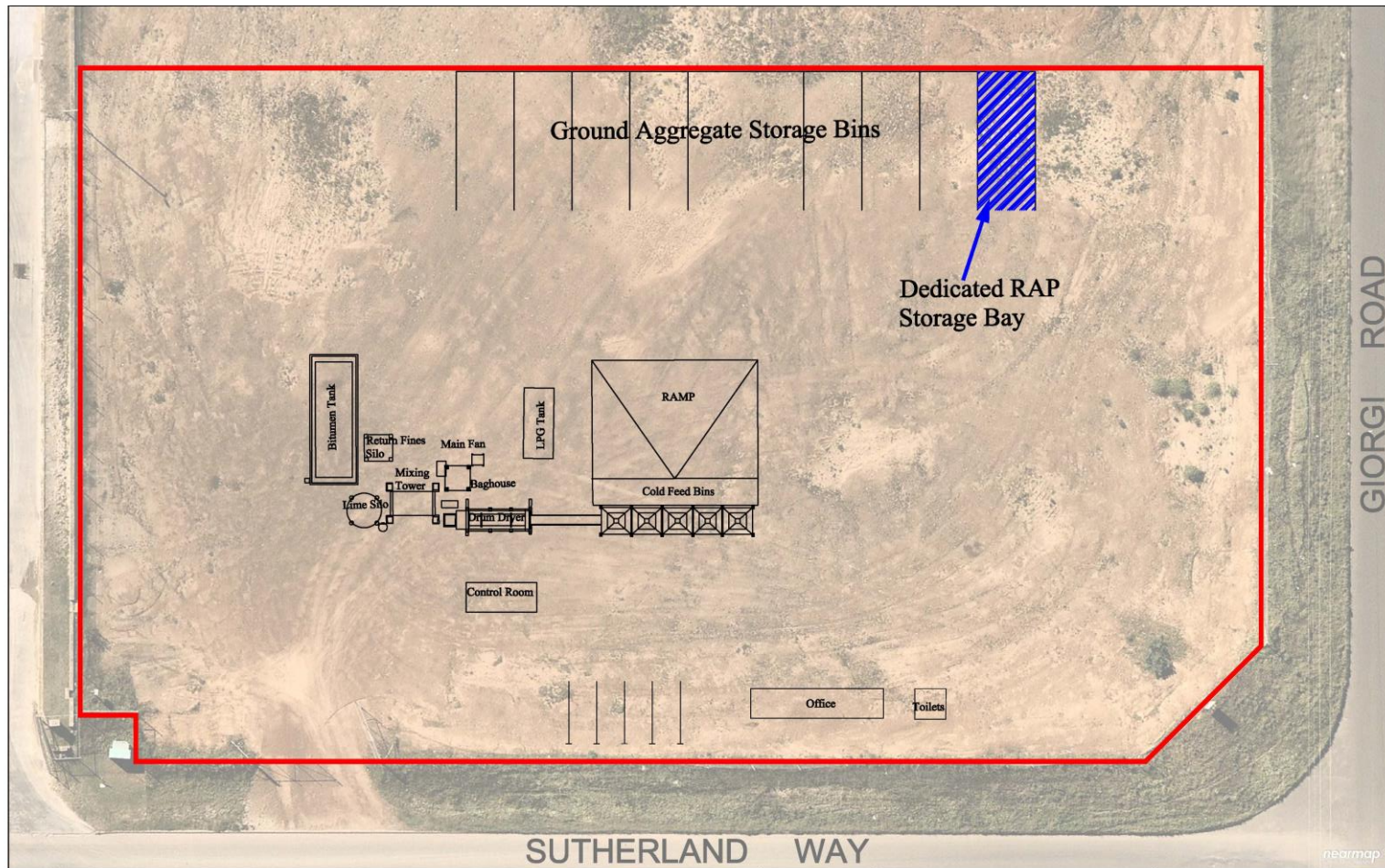
Processed RAP, which has already been crushed and/or screened to size for recycling into new asphalt, will be stored and used in the asphalt manufacturing process. The addition of the RAP cold feed system will allow recycling of asphalt materials.

Asphalttech, in this application, proposes that RAP will not be incorporated into the mix at initial start-up and accordingly have not shown a mechanism for introduction of RAP into the plant. Asphalttech chooses to wait until a small market, such as the Southwest of Western Australia has enough RAP to make it economically viable to do so. However it is extremely important that this application includes the intention of the use of RAP at this time as Asphalttech have the use of recycled material at the top of their ongoing operational agenda.

It is important to add that Asphalttech have a 100% RAP recycling facility at Neerabup near Perth and, in the interim, prior to sufficient material becoming available in the South West, RAP will be transported back to Perth and incorporated in their Perth mixes with only small amounts retained at the Bunbury site whilst waiting transport.





6B.2 Waste Acceptance Location




Drawing
Waste Acceptance Location

Revision
 1.0

Project
 Proposed Asphalt Plant
 Part of Lot 55, 2 Sutherland Way, Picton

Legend
 Boundary
 RAP Bay


Scale
 0 2 4 6 8 10m

