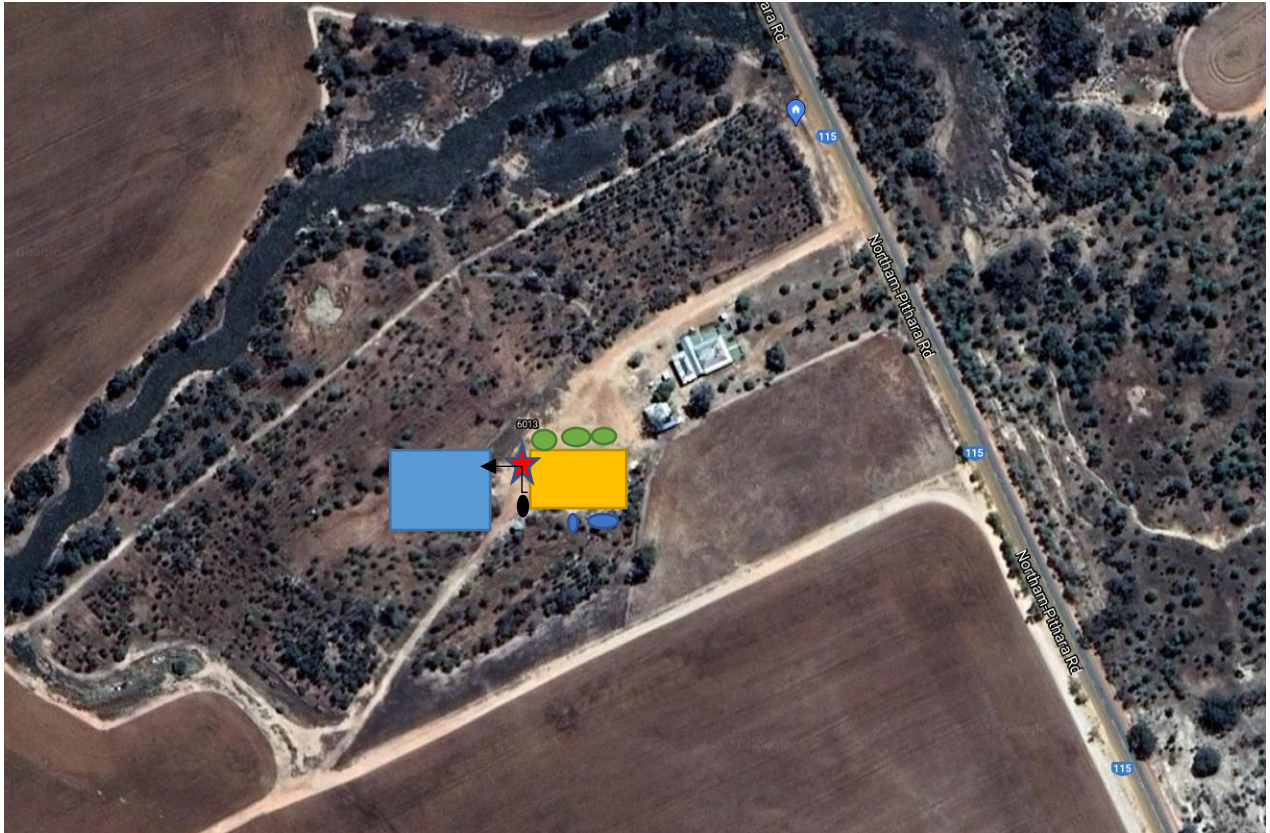






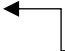


Mortlock Malt Site

Works Approval Conditions Page 4, Section 6, Table 1 Line 4 and 5:



-  Malting Shed
-  Grain Silos
-  Evaporation Pond
-  Fuel-oil Storage Tank
-  Collection Sump
-  Water Tanks
-  Direction of wastewater

Mortlock Malt Site

Works Approval Conditions Page 4, Section 6, Table 1, Line 1:

The processed Malt is to be stored inside the Malting Shed on pallet racking in a mix of 25kg, 500kg and 1000kg bags.

Works Approval Conditions Page 10, Schedule 2, Table 3, Line 1:

The dust extraction system for the cleaning operation is to consist of a vacuum which will extract the dust from the cleaner and direct the dust through ducting to a cyclone separator to collect the solids and direct them into a 1000kg bags. Once full, the bags will be taken off site and used as animal feed.

The raw grain is to be transferred to the malting vessel via a sealed Chain-Disk system and will not produce dust during operations.