

**Aurizon
Forrestfield Container Terminal
Controlled Waste In-transit Storage
July 2025**

Introduction

Aurizon - Trading as Australia Western Railroad Pty Ltd, a freight rail transport plans to transport a variety of categories of containerised packaged and bulk controlled waste from Perth to the eastern states and Kalgoorlie on daily rail services .

The sealed packaged and bulk controlled solid waste containers and bulk waste tanks will arrive by truck into the Aurizon Forrestfield Container Terminal either using Aurizon controlled waste licenced trucks or another licenced contractors.

The containers and /or tanks will be lifted directly from the trucks and/or trains and either placed onto the asphalt hardstand for solids or into the site bunds for bulk waste for limited periods before being lifted back on to waiting trains or trains for the transport to their destination.

Site Location and Layout

The site location and layout is shown in Figure 1. The proscribed premises is 2.64 ha and the hardstand area is asphalt.

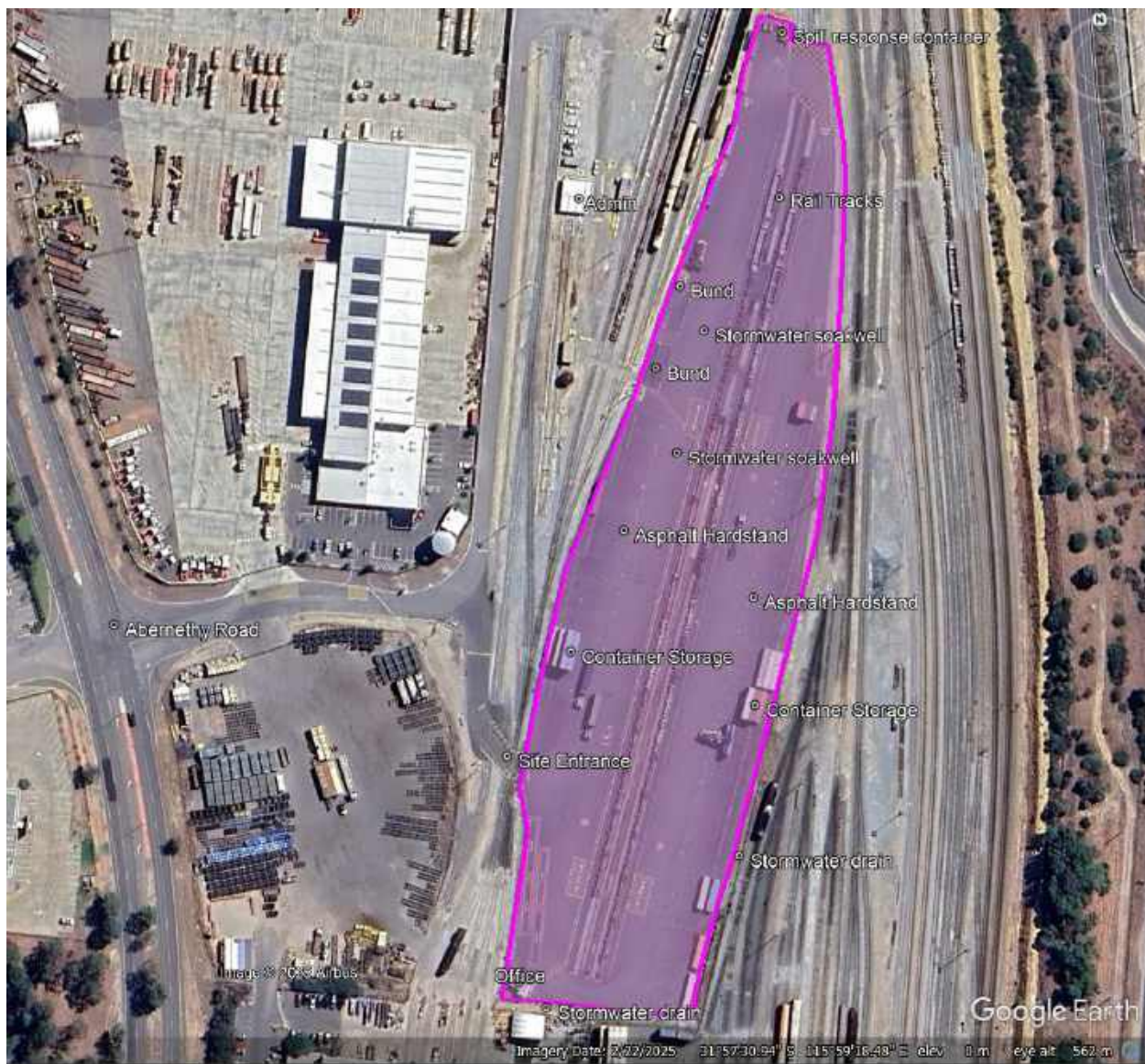


Figure 1: Forrestfield container Terminal Layout.

The image shows the location of two 16 m x 8 m x 0.75 m bunds for the temporary storage of liquid controlled waste. The bunds are currently approved (by DMIRS) to store in-transit liquid dangerous goods. An image of the bunds is shown below.



Figure 2: Dangerous goods storage bunds.

The heavy duty and chemically resistant bunds are lined with heavy duty rubber to prevent the containers from tearing the bund bases.

Licence Requirements

Currently, Aurizon is using a direct truck-to-train or train-to-truck process for managing solid and liquid controlled waste, however, to cater for the requirements of new waste transport contract and to provide contingency in the event of unplanned logistics issues that might limit access to waste disposal facilities, Aurizon is applying for a licence to store Category 61 and Category 62 wastes at the Forrestfield Container Terminal. The requirements are detailed below

Condition	Proposed Volume	Details
Category 62: Solid Waste Depot	Up to 20,000 tonnes per annual period	All categories of soil waste
61 : Liquid waste Depot	Up to 20,000 tonnes per annual period.	All categories of liquid waste

Emergency Management

Emergency spill management is detailed in the Forrestfield Container Terminal Site Emergency Response Plan (SERP) – provided as an attachment to the application. The Terminal has an on-site emergency spill response container (Figure 3) that is filled with spill emergency response equipment including, spill kits, drain covers, absorbent material, shovels, brooms and booms (Figure 4).



Figure 3: Forrestfield Container Terminal – Spill Response Container



Figure 4: Container contents

