



LUNDSTROM ENVIRONMENTAL CONSULTANTS PTY LTD

ACN 600 398 945

DUST MANAGEMENT PLAN **Prepared for B & J Catalano Pty Ltd** **Lots 2 and 4 Ludlow Road, Myalup**

Introduction

This Dust Management Plan (DMP) relates to an Extractive Industries Licence (EIL) application for limestone extraction on Lots 2 and 4 Ludlow Road, Myalup, Shire of Harvey and should be read in conjunction with the report entitled "*Extractive Industries Licence Application and Environmental Management Plan, Lots 2 and 4 Ludlow Road, Myalup, Shire Of Harvey*" prepared for B & J Catalano Pty Ltd by Lundstrom Environmental Consultants.

Development Proposal

B & J Catalano Pty Ltd has been operating a limestone extraction operation at the site since 2006. This development proposal will expand eastward from the previous completed operation, with an area of 8.3ha.

The proposed limestone extraction may emit dust to the atmosphere from the following activities:

- Clearing of native vegetation
- Removing topsoil
- Excavation of limestone
- Stockpiles
- Crushing and screening
- Loading of haulage trucks
- Trafficking on unsealed surfaces and access road

Potential for dust uplift by trucks exists using the unsealed access road, however Ludlow Road is sealed up to the access road (Figure 1).

Sensitive Receptors

There are no sensitive receptors within 1 000 metres of the pit area. The residence approximately 565m southwest of the EIL area (Figure 1) is the landowner's property and is not considered a sensitive receptor. The impact of dust is expected to be minimal due to the lack of residences within this buffer area and that the depth of operations is below ground level.

The EPA draft Environmental Assessment Guidelines "Separation distances between Industrial and sensitive land uses" lists the generic buffer for extractive industries grinding and milling works but no blasting as 500-1 000m depending on the type of processing. As this operation would be considered a "low scale" operation, the minimum generic buffer would be likely to apply. The landowner's residence is over 500m at the closest point to the proposed EIL footprint.

Wind Direction

In summer, the prevailing wind direction is from the east in the morning and the south-west in the afternoon.

Dust Management Measures

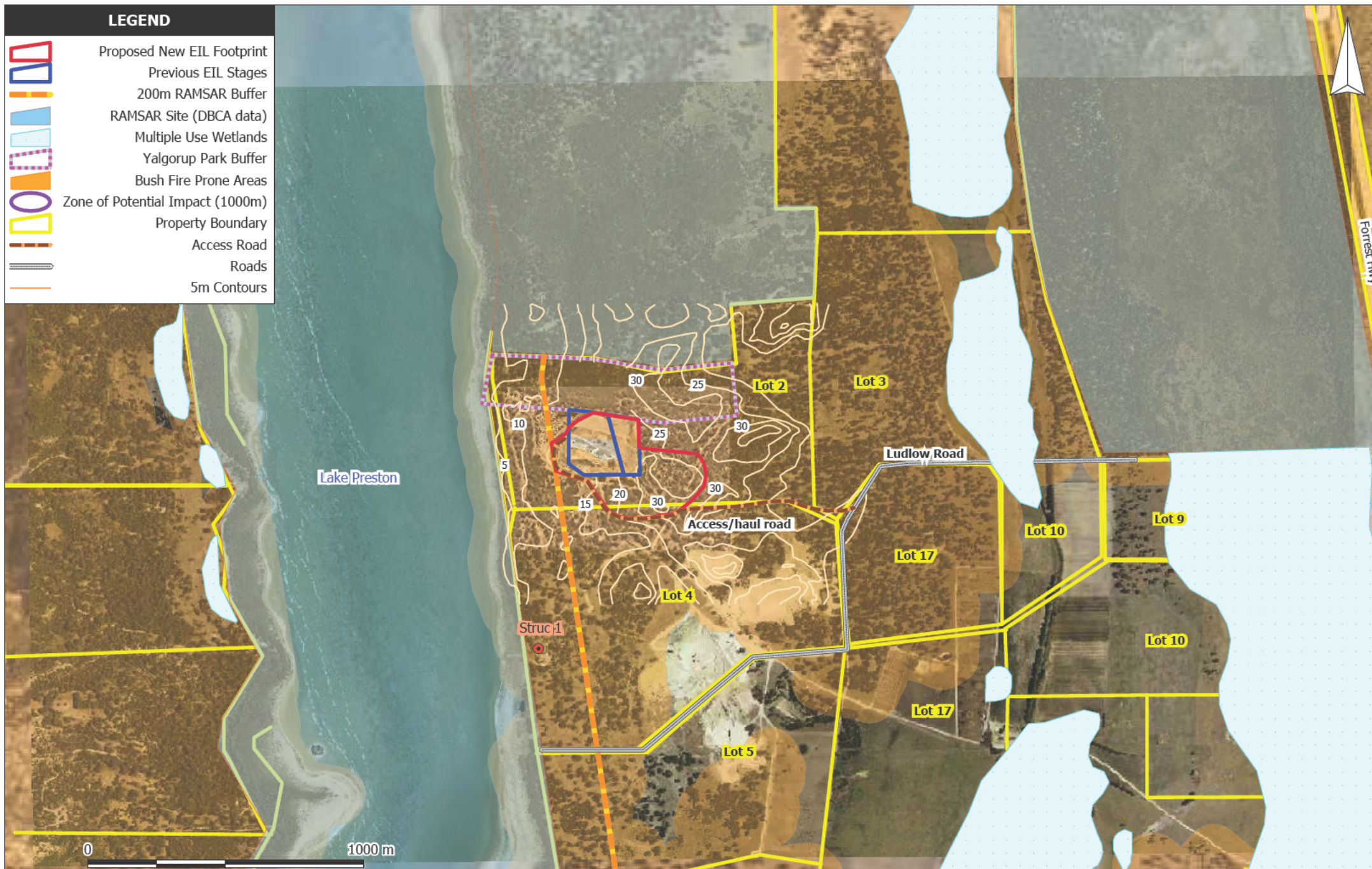
The proposed dust management measures have been summarised in Table 1.

Table 1: Summary of Dust Control Actions

Activity	Action	Control measure	Result
Daily			
Native vegetation clearing and topsoil stripping	Visual inspection of site for dust generation that is moving off site.	Water cart application over dust prone areas to reduce dust lift off.	Reduced dust generation. No dust leaving the property.
Limestone extraction and product loading	Visual inspection of site and access road for dust generation that is moving off site.	Water cart application over dust prone areas to reduce dust lift off. Crushing and stockpiling activities located in topographic low points with stockpiles arranged such that windbreaks are created to further shield sensitive receptors.	Reduced dust generation. No dust leaving the property.
Product transport	All loads covered before leaving the property. Regular wetting of haul road.	Maintain Ludlow Road. Cover loads.	Reduced dust on haul road. Reduce dust generation from product transport.
As Required			
Training	Induct all employees and contractors working on site.	Site induction includes awareness of dust generation and management measures to be utilised by all personnel on site.	Activities undertaken to minimise dust generation on site.
Dust complaints	A contact number for dust complaints exists at the entrance gate.	Undertake review of potential complaints and implement appropriate action to reduce dust generation from site.	Reduced dust generation from the property.
Rehabilitation /stabilisation of completed areas	Undertake rehabilitation on completed areas.	As per Rehabilitation Plan.	Reduced dust generation from the property.

Visual monitoring will be undertaken to confirm dust management measures are effectively maintaining dust emissions at acceptable levels.

FIGURES



**Lundstrom Environmental
Consultants Pty Ltd**

Leeming WA 6149
Mob: 0417934863, mikelund1@bigpond.com

Scale: 1:17000
Original Size: A4
Air Photo Source: Nearmap March 2019
Datum: GDA94
Projection: Australia MGA94 (50)

Client: B & J Catalano
Project: Limestone Extraction
Location: Lots 2 & 4 Ludlow Road, Myalup

**Figure 1:
Site and Surrounds**