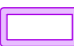






LEGEND

-  Prescribed Premises Boundary
-  Existing and Approved Footprint (V4)

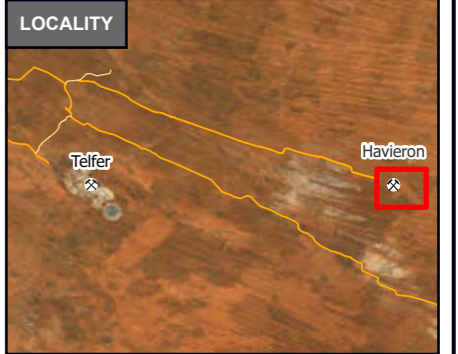
Site Features

-  Hypersaline Water Cells 1-3 (Existing)

Environmental Monitoring Bores (2023)

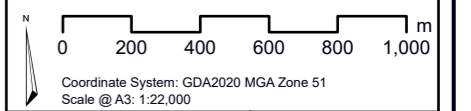
-  Active

© Talis Consultants Pty Ltd ("Talis") Copyright in the drawings, information and data recorded in this document ("the information") is the property of Talis. This document and the information are solely for the use of the authorised recipient and this document may not be used, transferred or reproduced in whole or part for any purpose other than that which it is supplied by Talis without written consent. Talis makes no representation, undertakes no duty and accepts no responsibility to any third party who may use or rely upon this document or the information.



GROUNDWATER MONITORING LOCATIONS

Havieron Gold Mining Project
Licence Application
Newcrest Operations Limited



Prepared: E Jackson	Date: 16/04/2024
Reviewed: A Jamieson	Revision: A
Project: TE23006	



Figure 2-4