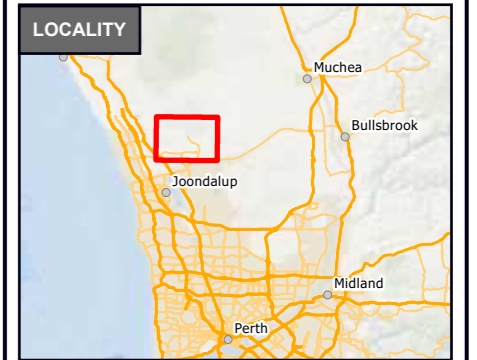


LEGEND

- Site Boundary
 - Lot Boundary
 - Lakes
 - National Park
 - State Forest
- Rail Network**
- Railway Stations
 - Railway Lines
- Western Australian Roads**
- Freeway / Highway
 - Main Road
 - Minor Road

© Talis Consultants Pty Ltd ("Talis") Copyright in the drawings, information and data recorded in this document ("the information") is the property of Talis. This document and the information are solely for the use of the authorised recipient and this document may not be used, transferred or reproduced in whole or part for any purpose other than that which it is supplied by Talis without written consent. Talis makes no representation, undertakes no duty and accepts no responsibility to any third party who may use or rely upon this document or the information.

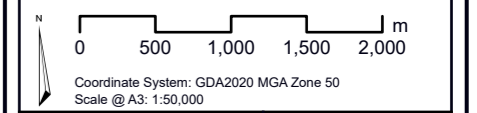


LOCALITY

Neerabup Resource Recovery
Precinct Approvals

Due Diligence

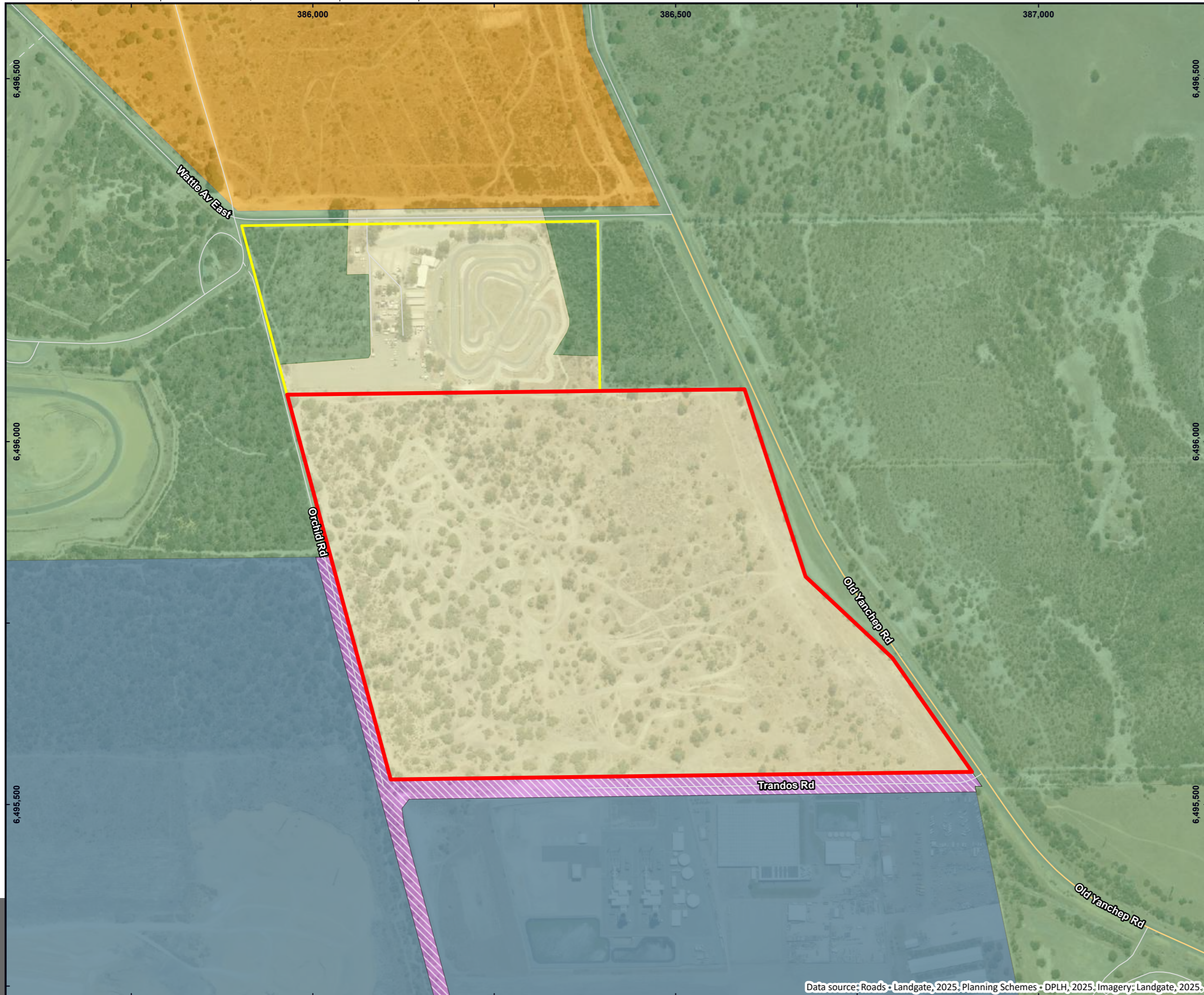
City of Wanneroo



Prepared:	A Barley	Date:	9/07/2025
Reviewed:	Q Kriznik	Revision:	A
Project:	TW25033		



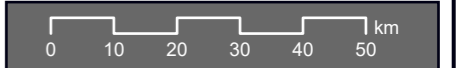
Figure 01



LEGEND

- Site Boundary
- Lot Boundary
- Local Planning Scheme**
- General industry
- Local road
- Region Planning Scheme**
- Industrial
- Public purposes
- Regional open space
- State forests
- Western Australian Roads**
- Main Road
- Minor Road
- Other

© Talis Consultants Pty Ltd ("Talis") Copyright in the drawings, information and data recorded in this document ("the information") is the property of Talis. This document and the information are solely for the use of the authorised recipient and the information may not be used, transferred or reproduced in whole or part for any purpose other than that which it is supplied by Talis without written consent. Talis makes no representation, undertakes no duty and accepts no responsibility to any third party who may use or rely upon this document or the information.

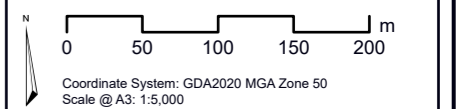


ZONING

Neerabup Resource Recovery
Precinct Approvals

Due Diligence

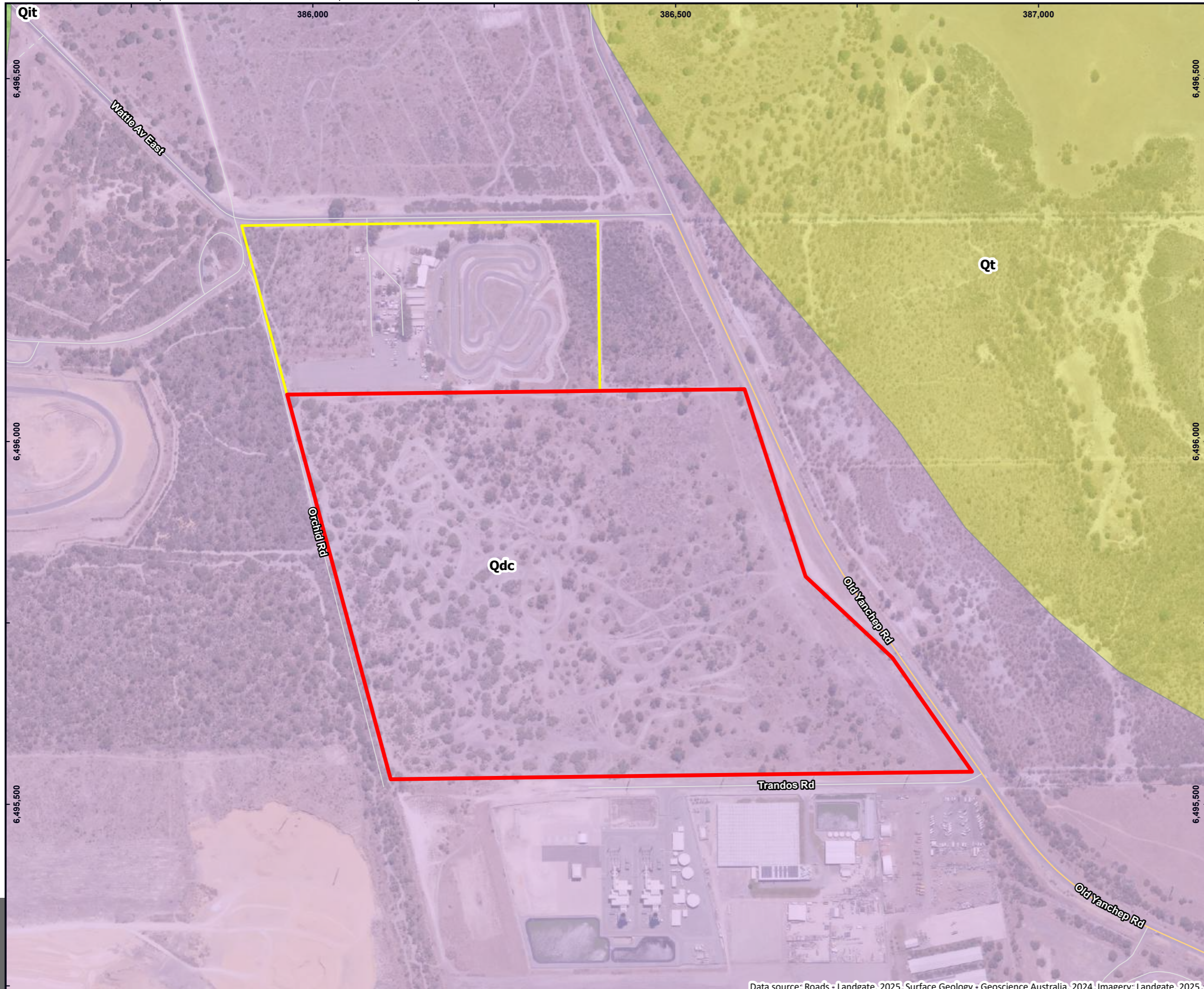
City of Wanneroo



Prepared:	A Barley	Date:	25/07/2025
Reviewed:	Q Kriznik	Revision:	A
Project:	TW25033		



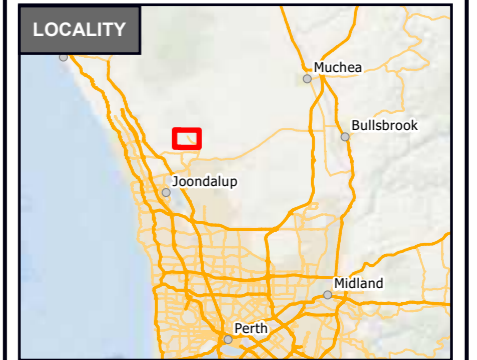
Figure 04



LEGEND

- Site Boundary
- Lot Boundary
- Surface Geology (GA)**
- Qdc:** Coastal sand dunes, beach sand, barrier beaches, foredune, beach ridges; calcareous and siliceous, locally shelly and/or cemented (beach rock); locally reworked
- Qit:** Unconsolidated to strongly lithified calcrene with calcrete/kankar soils; aeolian. Locally quartzose, feldspathic, or heavy-mineral-bearing.
- Qt:** Lake and swamp deposits; mud, silt, evaporites, limestone; minor sand, peat
- Western Australian Roads**
- Main Road
- Minor Road
- Other

© Talis Consultants Pty Ltd ("Talis") Copyright in the drawings, information and data recorded in this document ("the information") is the property of Talis. This document and the information are solely for the use of the authorised recipient and this document may not be used, transferred or reproduced in whole or part for any purpose other than that which it is supplied by Talis without written consent. Talis makes no representation, undertakes no duty and accepts no responsibility to any third party who may use or rely upon this document or the information.

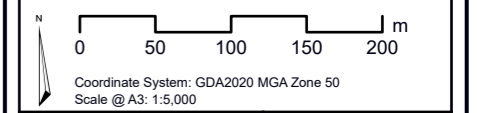


SURFACE GEOLOGY

Neerabup Resource Recovery
Precinct Approvals

Due Diligence

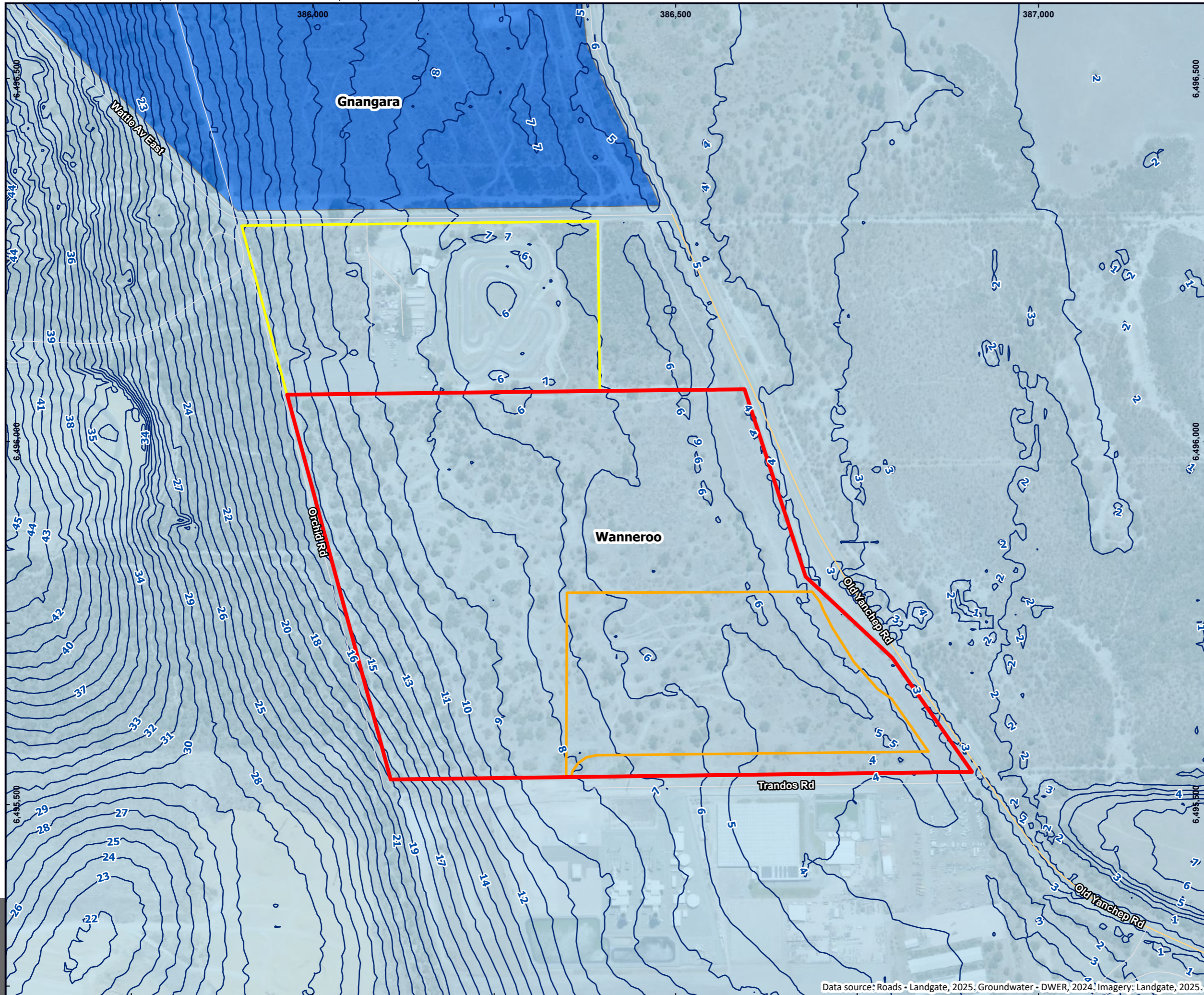
City of Wanneroo



Prepared:	A Barley	Date:	25/07/2025
Reviewed:	Q Kriznik	Revision:	A
Project:	TW25033		



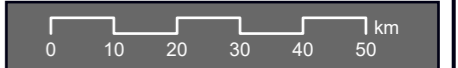
Figure 07



LEGEND

- Site Boundary
- Lot Boundary
- Development Area Stage 1
- RIWI Act Groundwater Areas**
- Gnangara Proclaimed Groundwater Area
- Wanneroo Proclaimed Groundwater Area
- Groundwater Contours**
- 1m Intervals
- Western Australian Roads**
- Main Road
- Minor Road
- Other

© Talis Consultants Pty Ltd ("Talis") Copyright in the drawings, information and data recorded in this document ("the information") is the property of Talis. This document and the information are solely for the use of the authorised recipient and this document may not be used, transferred or reproduced in whole or part for any purpose other than that which it is supplied by Talis without written consent. Talis makes no representation, undertakes no duty and accepts no responsibility to any third party who may use or rely upon this document or the information.

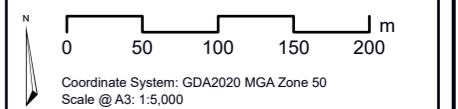


GROUNDWATER

Neerabup Resource Recovery
Precinct Approvals

Due Diligence

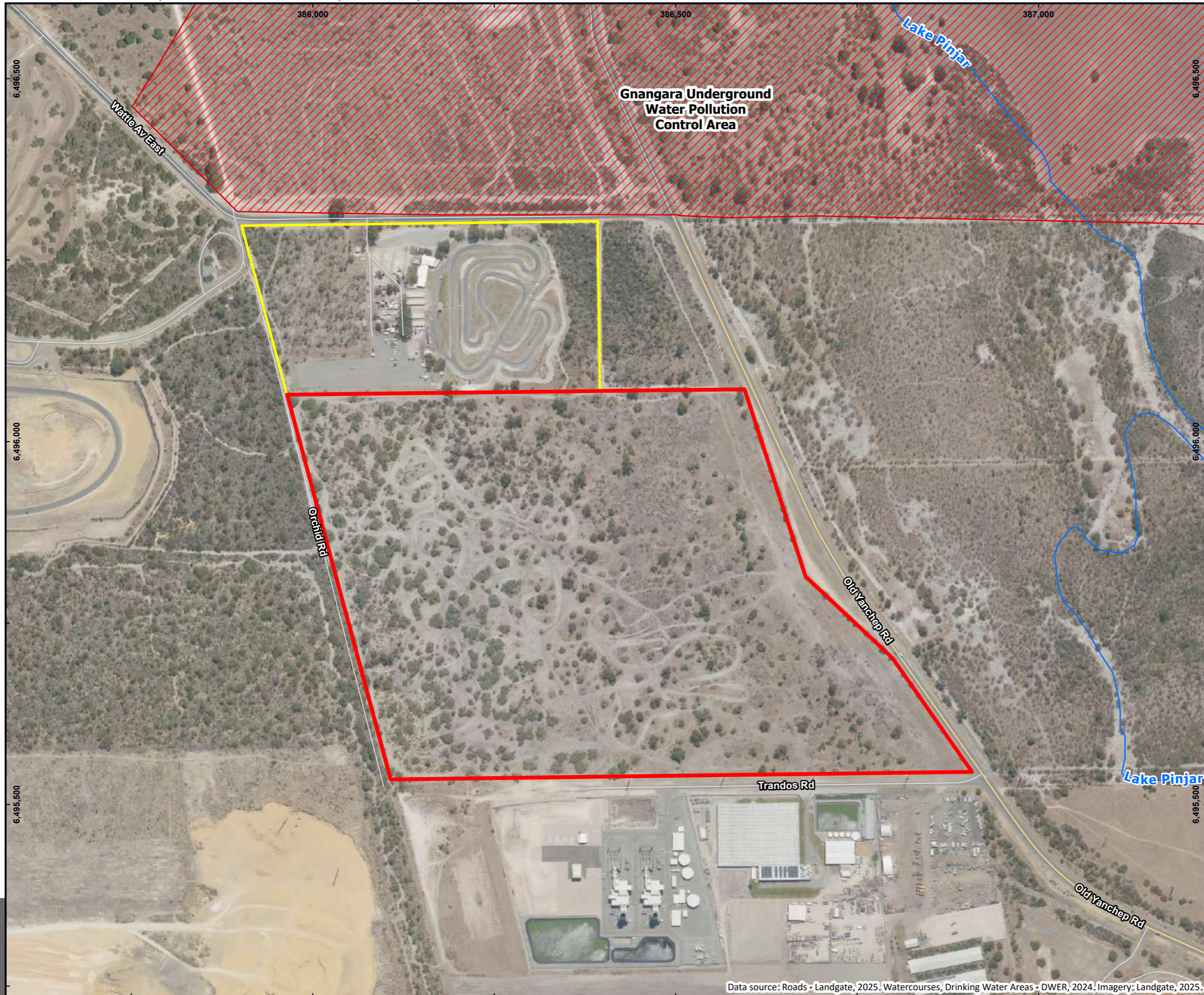
City of Wanneroo



Prepared:	A Barley	Date:	25/07/2025
Reviewed:	Q Kriznik	Revision:	A
Project:	TW25033		



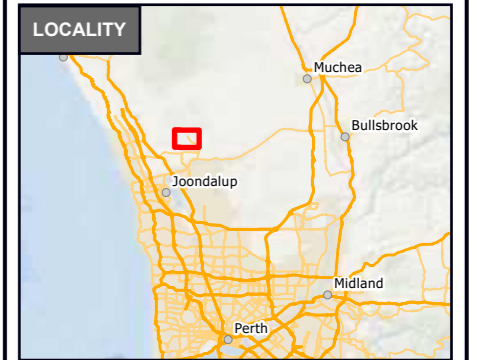
Figure 09



LEGEND

- Site Boundary
- Lot Boundary
- Hydrography**
- Major River
- Public Drinking Water Source Protection Area - Priority 1
- Western Australian Roads**
- Main Road
- Minor Road
- Other

© Talis Consultants Pty Ltd ("Talis") Copyright in the drawings, information and data recorded in this document ("the information") is the property of Talis. This document and the information are solely for the use of the authorised recipient and this document may not be used, transferred or reproduced in whole or part for any purpose other than that which it is supplied by Talis without written consent. Talis makes no representation, undertakes no duty and accepts no responsibility to any third party who may use or rely upon this document or the information.

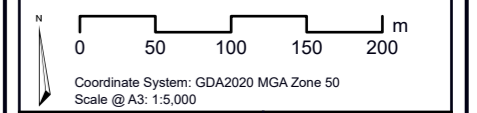


SURFACE WATER

Neerabup Resource Recovery
Precinct Approvals

Due Diligence

City of Wanneroo



Prepared:	A Barley	Date:	25/07/2025
Reviewed:	Q Kriznik	Revision:	A
Project:	TW25033		



Figure 10