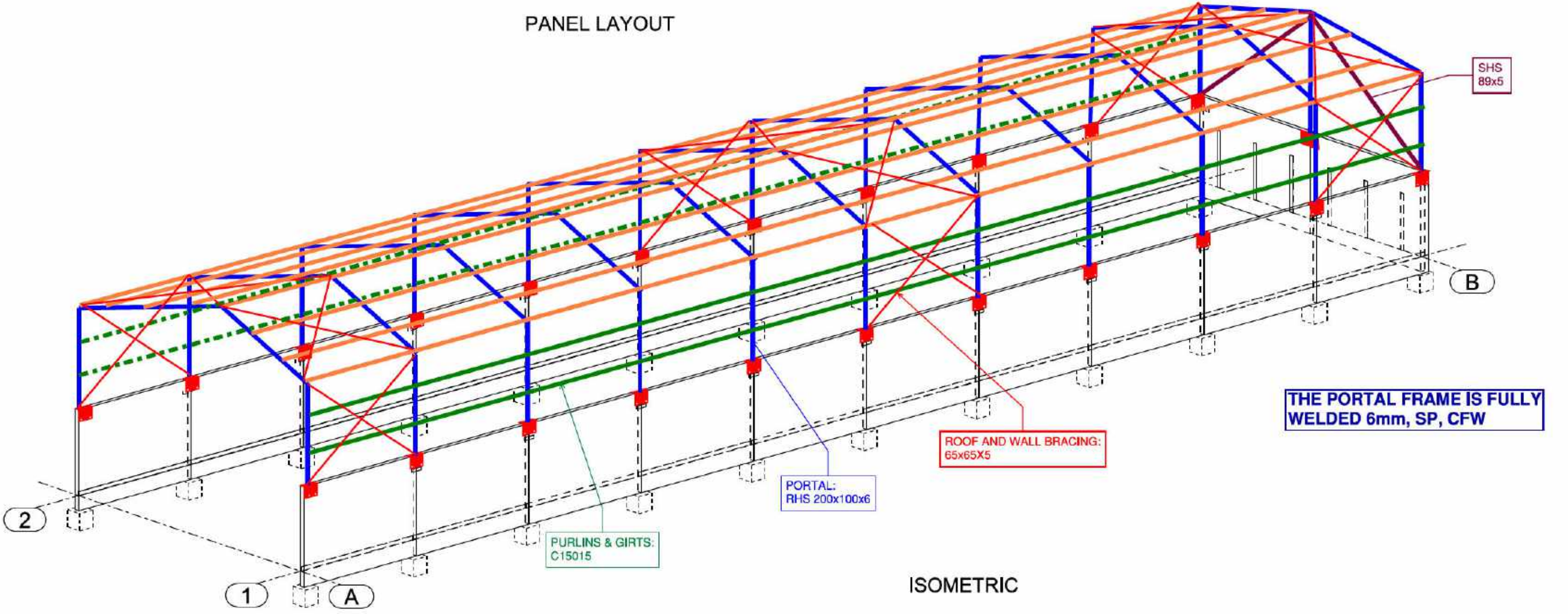


PANEL LAYOUT



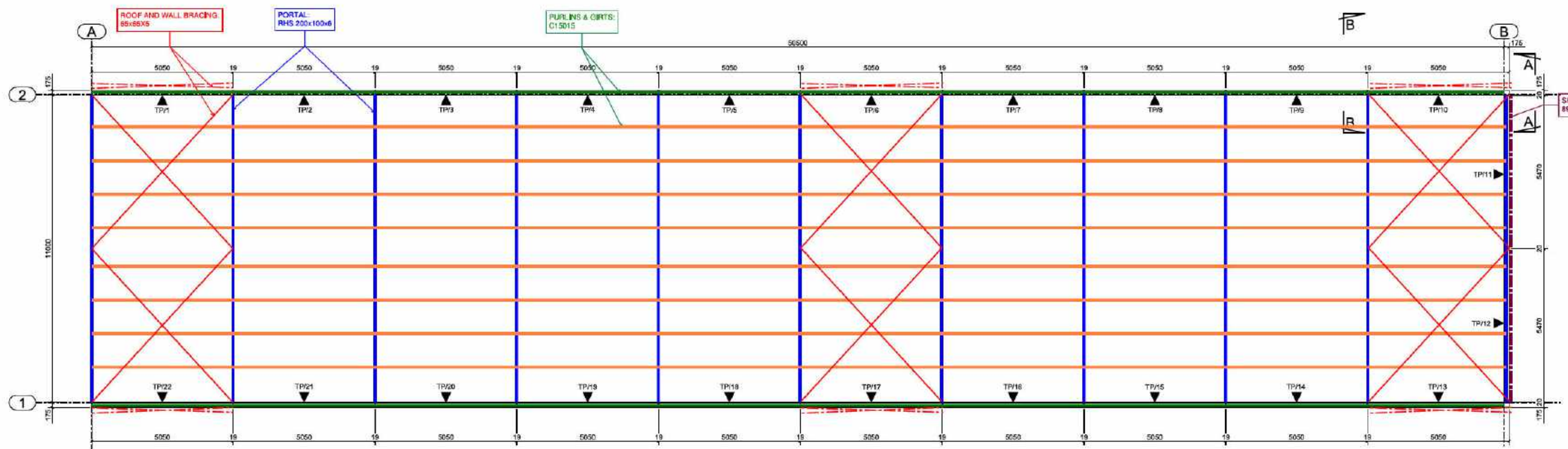
ISOMETRIC

**AAS ENGINEERING PTY LTD**  
 22 Tipuana Tce, Harrisdale WA 6112  
 Email: info@asengineering.com.au  
 Web: www.asengineering.com.au  
 Mobile: 04 555 03 777  
 ABN: 68650628532

No.	Description	Date
A	ISSUED FOR BUILDING PERMIT	01/07/2025
<p>Mr Ahmad Said            MIEAust CPEng NER            RPEQ No: 27296            National Engineering Register            1/07/2025            Registered on the NER in the areas of practice of Civil &amp; Structural Engineering</p>		

LITTLE LOADS PROPERTY TRUST  
 WOOTTATING COMPOST FACILITY  
 WOOTTATING

PLANS + ELEVATIONS		
Project number	121 AAS/25	S-101
Drawn by	A. N.	
Checked by	A. S.	
		Scale



ROOF PLAN

10EX UPSIDE U PLATE WITH 2 HOLES 14 mm FOR M12 THROUGH BOLTS 8.8, FULLY WELDED

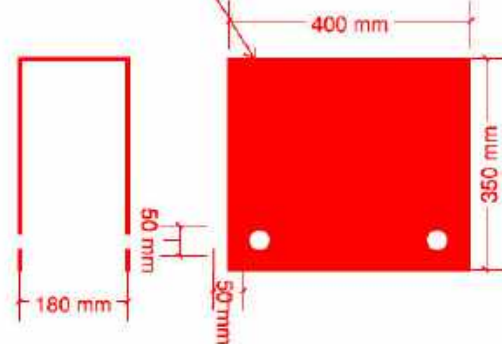
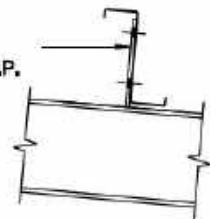


PLATE DETAILS

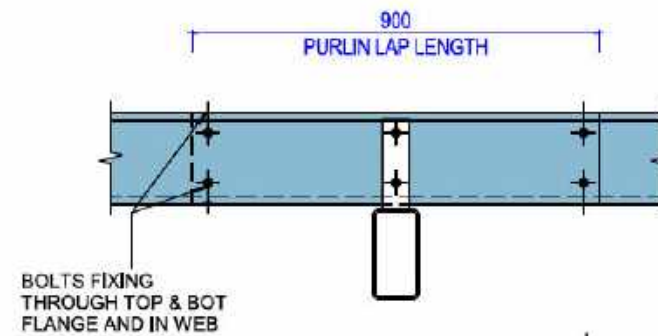
8 THICK CLEAT  
2-M12 BOLTS  
6 C.F.W CATEGORY G.P.



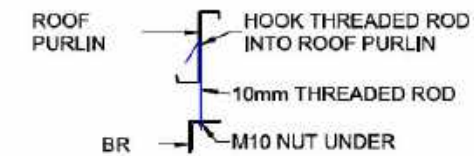
TYPICAL DETAIL

NOTES:

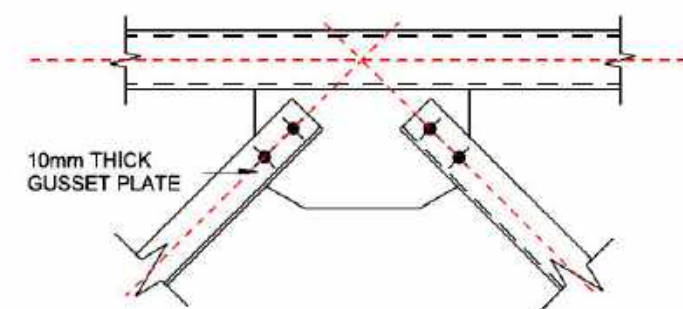
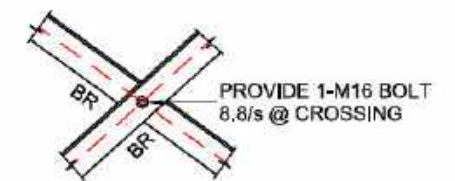
1. DETAILS OF BOLT HOLES AND LAPS TO PURLINS AND GIRTS TO BE IN ACCORDANCE WITH MANUFACTURER'S RECOMMENDATIONS
2. DETAILS OF BRIDGING TO PURLINS AND GIRTS TO BE IN ACCORDANCE WITH MANUFACTURER'S RECOMMENDATIONS
3. ROOF PITCH 20 DEGREES MAXIMUM



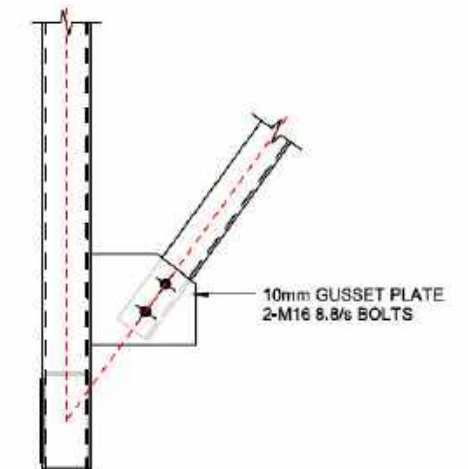
BOLTS FIXING THROUGH TOP & BOT FLANGE AND IN WEB



NOTE: SAG ROD TO BE LOCATED ON PURLIN CLOSEST TO CROSS BRACE.



TYPE 1



TYPE 2



AAS ENGINEERING PTY LTD

22 Tipuana Tce, Harrisdale WA 6112  
Email: info@asengineering.com.au  
Web: www.asengineering.com.au  
Mobile: 04 555 03 777  
ABN: 68650628532

No.	Description	Date
A	ISSUED FOR BUILDING PERMIT	01/07/2025

LITTLE LOADS PROPERTY TRUST  
WOOTTATING COMPOST FACILITY  
WOOTTATING

DETAILS		
Project number	121 AAS/25	S-102
Drawn by	A. N.	
Checked by	A. S.	
		Scale