



Application for Licence Amendment

Part V Division 3 of the *Environmental Protection Act 1986*

Licence Number	L5258/1991/11
Licence Holder	Pilbara Iron Company (Services) Pty Ltd
ACN	35 107 210 248
File Number	APP-0034322
Premises	<p>Mt Brockman, Nammuldi and Silvergrass Iron Ore Mines</p> <p>AML70/4, ALM70/272, G47/01242, G47/01243, G47/1269, L47/139, L47/140, L47/141, L47/152, L47/160, L47/647, L47/786, LG848907 and LPL N050438</p> <p>MT SHEILA WA 6751</p> <p>As defined by the coordinates in Schedule 2 of the revised Licence</p>
Date of Report	29 June 2026
Decision	Revised licence granted

Table of Contents

1. Decision summary	1
2. Scope of assessment	1
2.1 Regulatory framework	1
2.2 Amendment summary	1
2.2.1 Part IV of the EP Act	1
2.2.2 Proposed mine dewatering operations	2
2.2.3 Pit water balance and water quality	6
3. Risk assessment	8
3.1 Source-pathways and receptors	8
3.1.1 Emissions and controls	8
3.1.2 Receptors	11
3.2 Risk ratings	12
4. Consultation	16
5. Conclusion	16
5.1 Summary of amendments	16
References	17
Appendix 1: Summary of Licence Holder’s comments on risk assessment and draft conditions	18
Table 1: Proposed design or throughput changes	1
Table 3: Licence Holder controls	9
Table 4: Sensitive human and environmental receptors and distance from prescribed activity	11
Table 5. Risk assessment of potential emissions and discharges from the Premises during construction and operation	12
Table 6: Consultation	16
Table 7: Summary of licence amendments	16
Figure 1: SGE Pit 2 MAR Scheme dewatering infrastructure	3
Figure 2: Lens A and Lens B dewatering infrastructure	5

1. Decision summary

Licence L5258/1991/11 is held by Pilbara Iron Company (Services) Pty Ltd (Licence Holder) for the Nammuldi and Silvergrass Iron Ore Mines (the Premises), located at Mt Brockman.

This Amendment Report documents the assessment of potential risks to the environment and public health from proposed changes to the emissions and discharges during the construction and operation of the Premises. As a result of this assessment, Revised Licence L5258/1991/11 has been granted.

2. Scope of assessment

2.1 Regulatory framework

In completing the assessment documented in this Amendment Report, the department has considered and given due regard to its Regulatory Framework and relevant policy documents which are available at <https://dwer.wa.gov.au/regulatory-documents>.

2.2 Amendment summary

On 19 March 2026, the Licence Holder submitted an application to the department to amend Licence L5258/1991/11 under section 59 and 59B of the *Environmental Protection Act 1986* (EP Act). The amendment is seeking approval for three (3) additional discharge points.

The following pit void discharge points are proposed:

- Nammuldi Lens A.
- Nammuldi Lens B; and
- SGE Pit 2.

The purpose of the additional mine dewater discharge locations is to manage and retain surplus groundwater that is abstracted from below-water-table mining operations. The Licence Holder expects that this will provide pressure relief for the SGE Managed Aquifer Recharge (MAR) Scheme.

This amendment is limited only to changes to Category 6 activities from the existing Licence. No changes to the aspects of the existing Licence relating to Category 5, 12, 54, 57, 64 and 73 have been requested by the Licence Holder.

Table 1 below outlines the proposed changes to the existing Licence.

Table 1: Proposed design or throughput changes

Category	Current design capacity	Proposed design capacity	Description of proposed amendment
6	42,300,000 tonnes per annual period	No change to design or throughput capacity is proposed	Additional discharge points have been added for the discharge of mine dewater.

2.2.1 Part IV of the EP Act

Ministerial Statement 558 (MS 558), approved in 2000, approved full operations at the BS2 Hub, with mining commencing at Nammuldi in 2006. An expansion to the mine site was referred in 2010 and subsequently approved under Ministerial Statement 925 (MS 925) in 2013.

Ministerial Statement 1246 (MS 1246) was published in February 2025 for the Brockman Syncline Proposal (BSP) which includes the existing Brockman 2, Nammuldi and Silvergrass operations, thereby superseding MS 925.

MS 1246 considers the impacts of dewatering discharge into mine pits on groundwater by requiring the Licence Holder to ensure that groundwater mounding above pre-mining groundwater levels within mine pits does not occur (Part B4-1, condition 5) and that dewatering and discharge do not cause long term disturbance to the health and abundance of groundwater dependent vegetation communities in Duck Creek and Caves Creek (Part B4-1, condition 8).

Part B8 of MS 1246 outlines the requirements for site closure which considers the final characteristics of the site. Closure requirements ensure minimal groundwater mounding by limiting the groundwater to pre-mining levels and confirming that the plume will be restricted to within the Premises boundary due to the interception of monitoring and extraction bores.

All clearing is within the approved development envelope and clearing limits have been authorised under MS 1246. The Licence Holder ensures that ground disturbance activities have been planned to ensure minimal disturbance using appropriate ground engaging equipment, use of designated tracks, roadways and use of pre-existing disturbed areas where appropriate.

The amendments proposed to Operating Licence L5298/1991/11 remain consistent with MS 1246.

2.2.2 Proposed mine dewatering operations

SGE MAR Scheme and dewatering to SGE Pit 2

The construction, commissioning, and operation of the SGE MAR Scheme was initially authorised through an amendment to Licence L5258/1991/11 which was granted on 20 February 2026. The Scheme aims to improve groundwater resources, protect sensitive groundwater dependent ecosystems, and mitigate potential impacts from groundwater drawdown associated with mining at the SGE Pit by injecting mine dewater into the aquifer below Caves Creek to support recharge of shallow and deep groundwater resources (Rio Tinto, 2026).

The Licence Holder has identified a requirement to manage excess mine dewatering water in circumstances where the SGE MAR Scheme water supply line becomes over-pressurised. To ensure the safe and reliable ongoing operation of the Scheme, emergency pressure relief via discharge to an appropriate location is required. The proposed infrastructure, including the pipeline, discharge point and monitoring bores are shown in Figure 1.

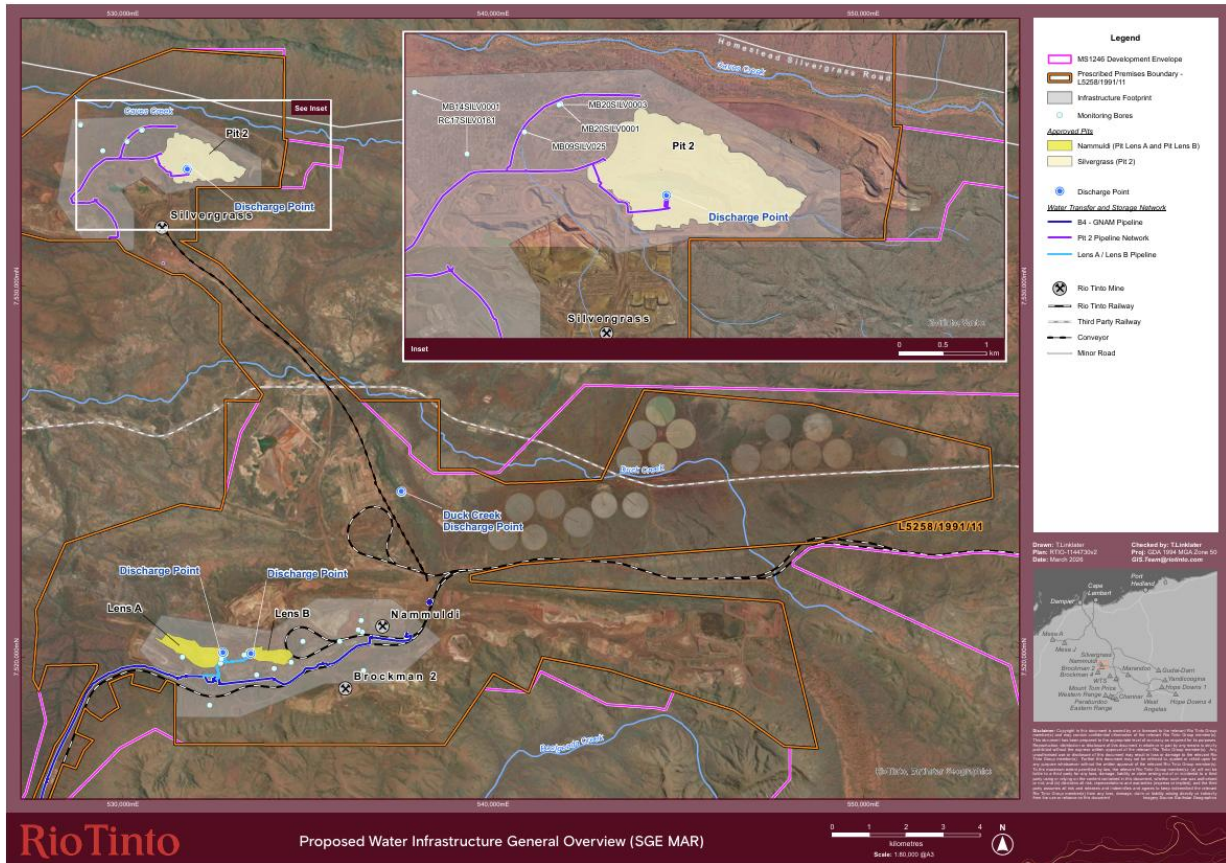


Figure 1: SGE Pit 2 MAR Scheme dewatering infrastructure

The discharge line is proposed to begin at an offtake from the existing SGE Pit 2 header line, continuing to the edge of SGE Pit 2, and ending in discharge manifold with discharge being controlled by a pressure relief valve. Pipelines will be constructed within the defined infrastructure footprint as shown in Figure 1, however the final layout of these may change depending on final contours and earthworks as required.

The proposed infrastructure will facilitate the discharge of mine dewater into SGE Pit 2 to relieve system pressure during events such as pump failure, planned maintenance activities, or other temporary constraints that may limit reinjection capacity (Rio Tinto, 2026). While the proposed discharge is anticipated to be infrequent following system commissioning and calibration, provision for pressure-relief discharge will be required for the operational life of the MAR Scheme (Rio Tinto, 2026).

During the maximum discharge scenario, water is expected to be directed to Pit 2 at an average rate of 350 L/s during commissioning, which equates to approximately 800,000 tonnes per annual period.

Greater Brockman Water Security Project (GBWSP)

In addition to the discharge of mine dewater into SGE Pit 2 for the purpose of allowing the continued safe operation of the MAR Scheme, this amendment also seeks to establish two additional dewatering discharge points at Lens A and Lens B as art of the GBWSP.

The GBWSP has been established to manage surplus mine dewatering volumes through the proposed discharge to disused pit voids Lens A and Lens B (Figure 2). The dewater proposed to be discharged into Lens A and B will originate from the BS2 Hub (Brockman 2 on Figure 2), and the BS1 and BS4 mine sites. The BS1 mine site is located south of the BS2 Hub and within the prescribed premises boundary of Works Approval W6978/2024/1, and the BS4 mine site is located south of the BS2 Hub and within the prescribed premises boundary of Licence

L8232/2008/2. Groundwater will be abstracted from these mine sites to allow ongoing ore mining operations.

The proposal includes the construction of dewatering pipelines and associated infrastructure (flow meters, valves, pumps etc.), discharge points and monitoring bores as shown in Figure 2.

The Licence Holder has indicated that proposed infrastructure will be contained within the defined infrastructure footprint as shown in Figure 2, however, as with the SGE Pit 2 infrastructure, the final location and orientation may differ from that shown on the indicative site layout (Rio Tinto, 2026).

Discharge of mine dewater is proposed to follow a staged approach to allow operational flexibility and to ensure ongoing effective management of environmental risks. The proposed stages are as follows:

- Deposition to Lens A from January 2027 until Life of Mine.
- Deposition to Lens B from January 2027 until Life of Mine; and
- Deposition to Lens B from January 2027, followed by deposition to Lens A post-2030 until Life of Mine.

A total maximum discharge volume of 12,000,300 tonnes per annual period, with an instantaneous flow rate of 1,000 L/s, has been assessed. This volume applies where either Lens A or Lens B is operating at one time, or where both discharge points are operating concurrently (Rio Tinto, 2026).

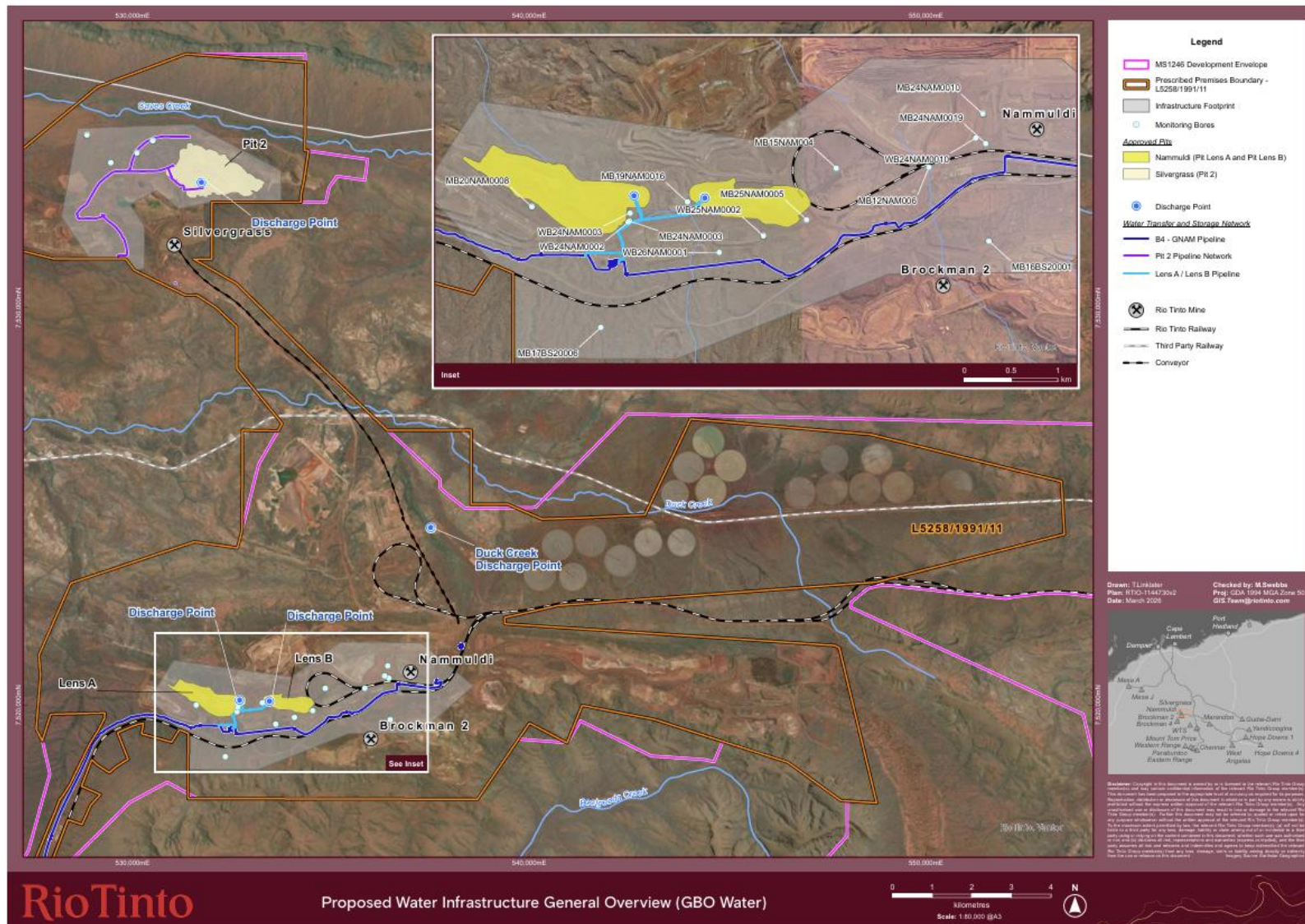


Figure 2: Lens A and Lens B dewatering infrastructure

2.2.3 Pit water balance and water quality

Water Balance – SGE Pit 2

A water balance model was developed for the SGE Pit 2, as well as Lens A and Lens B. Under the model, the rate of discharge into SGE Pit 2 was measured at 350 L/s for 12 hours every week on Mondays throughout the period 1 January 2026 to 1 January 2027. This corresponds with a maximum discharge volume of 800,000 tonnes per annual period (Rio Tinto, 2026).

The results of the water balance model are as follows:

- Water balance results show pit water levels below regulatory (pre-mining) groundwater levels during the simulated period.
- The dominant inflow component is groundwater inflow prior to commissioning of the SGE MAR Scheme on 1 October 2026. Outflow is via groundwater abstraction and evaporation, with groundwater outflow influenced by abstraction via dewatering bores associated with the SGE MAR Scheme from 1 October 2026 onwards.
- Overtopping is unlikely, as modelled peak water level is expected to reach 520.4 mRL i.e. 43.6 m below the spill level of 564 mRL.
- Modelled peak water level of 520.4 mRL is 26.1 m below the pre-mining groundwater level of 546.5 mRL.
- Pit water levels will remain very low following commencement of regional groundwater abstraction by SGE dewatering bores in 1 October 2026. Commencement of the SGE MAR Scheme and associated pressure relief discharge will result in a net decrease to the pit water volume.
- After the commissioning phase (Year 1), even under a conservative assumption of a single day of shutdown per month, any pressure release discharge at the modelled discharge rate is not expected to result in a material impact on pit water levels. At this stage of operations, pit dewatering is anticipated to be well advanced and the pit lake is expected to be near dry, such that the risk of pit lake overtopping is minimal.
- Similarly, pressure release discharge at the modelled rate after commissioning is not expected to materially alter the groundwater flow field. Instead, any associated (Rio Tinto, 2026) seepage would most likely be intercepted by the nearby borefield. Consequently, offsite migration of seepage is considered unlikely.

Seepage modelling conducted for SGE Pit 2 indicates that any seepage from the pit is likely to flow towards the west and northwest, being drawn to the nearby dewatering bores (Rio Tinto, 2026). The Licence Holder suggests that there is a lag effect where the seepage plume reaches the maximum extent approximately one year after discharge of mine dewater into the pit, after which the seepage plume is anticipated to reduce in size.

Based on numerical groundwater modelling, the seepage plume is likely to remain entirely within the Premises and as such, the risk of adverse impacts on environmental receptors outside the mining area remains low (Rio Tinto, 2026).

Water Balance – Lens A and Lens B

The Licence Holder has proposed for operational pit water levels to be maintained below the pre-mining groundwater level (574 mRL) to ensure no overflow or uncontrolled discharge occurs.

The water balance modelling indicates that the maximum modelled water level at the 95th percentile is 536.2 mR for both Lens A and Lens B.

Based on the pit crest elevations, the difference between crest elevation and the modelled 95th percentile water level is approximately:

- 45.8 m for Lens A, and
- 64.8 m for Lens B

This represents the available storage capacity under modelled conditions.

The modelling demonstrates that predicted water levels remain well below both pit crest elevations and the pre-mining groundwater level, indicating that substantial capacity is available and that overtopping is unlikely under the assessed scenarios.

Considering the storage capacity and water loss pathways such as seepage and evaporation, the Licence Holder suggests that overtopping is unlikely to occur under the baseline anticipated discharge scenario, with the water modelling results indicating that the pits have sufficient storage capacity to contain runoff from the Probable Maximum Precipitation (PMP) 72-hour storm event. Modelled water balance scenarios show pit water levels remain below pre-mining groundwater levels, with 95th percentile results confirming compliance (Rio Tinto, 2026).

Groundwater throughout the mine area is of similar quality to that being discharged, and the Licence Holder expects that seepage will be minimal and not result in adverse impacts.

Groundwater modeling that has been undertaken for the site indicates that seepage is observably contained within the premises, thereby limiting exposure to environmental receptors (Rio Tinto, 2026).

Numerical groundwater modelling was undertaken to assess seepage associated with the proposed in-pit discharge. The modelling demonstrates that seepage remains hydraulically contained within the mining area, with a low likelihood of off-site migration or impacts to environmental receptors (Rio Tinto, 2026).

Water Quality

Lens A and Lens B

Water quality investigations have been carried out for the mine dewater that is proposed to enter Lens A and Lens B. Results from the investigations indicate that the proposed water discharge in Lens A and B is not likely to result in significant changes in water quality or impacts on groundwater environmental receptors (Rio Tinto, 2026).

Modelling that has been carried out at Lens A and Lens B shows that there is little to no material risk of salt accumulation through evapo-concentration for the short-term water retention in the pits that is proposed. Anticipated Total Dissolved Solids (TDS) concentrations are expected to be within the freshwater range, and close to the TDS range exhibited by the discharged mine dewater (approximately 520 to 1000 mg/ L for TDS).

Increases in salinity through evaporation are only expected to become significant where the residual pit lake water volumes are extremely low, which is not the case at Lens A and Lens B. Additionally, the Lens A and Lens B pits have demonstrated low geochemical risk associated with the pit wall lithologies, and as such discharge of mine dewater into the pits is unlikely to result in a material risk to water quality (Rio Tinto, 2026).

Water quality modelling undertaken to date shows that discharge of water into the Lens A or

Lens B voids is not expected to result in significant changes to overall water quality (Rio Tinto, 2026). This is due to the nature of the mine dewater being similar in quality and chemistry to the groundwater and therefore the receiving environment. The primary contributor to increased chemical load and potential contaminants is the external catchment runoff and solute release from the exposed pit walls, however, the Licence Holder does not expect that these inputs will have any significant impact to the receiving groundwater environment.

SGE Pit 2

Investigations have been carried out at SGE Pit 2 regarding the water quality of the source water (mine dewater) and the receiving water (groundwater). The outcome of these investigations indicates a similar chemical composition and overall quality between the source water and the receiving environment (Rio Tinto, 2026), with the groundwater having been observed as being slightly basic and fresh, with low dissolved metal and nutrient concentrations. Existing water quality in the SGE Pit 2 has been observed to be slightly basic and fresh, like the underlying groundwater, and dissolved metal and nutrient concentrations are generally low.

Like Lens A and Lens B, salt accumulation is unlikely to result in reduced water quality due to the short-term retention of water within the pit, as water is discharged into the pit only when required for pressure release of the MAR Scheme. The water quality of the source water is expected to remain fresh (<1,000 mg/L TDS), similar to the water quality of the surrounding groundwater.

Overall water quality modelling results indicate that temporary discharge for pressure relief discharge from the SGE MAR is not likely to adversely affect pit lake water quality, and the water quality of the SGE Pit 2 lake is expected to remain circum-neutral and non-saline (Rio Tinto, 2026).

To support the operation of the additional discharge points at SGE Pit 2, Lens A and Lens B, an updated monitoring schedule is proposed and has been included as Condition 23 of the updated licence.

3. Risk assessment

The department assesses the risks of emissions from prescribed premises and identifies the potential source, pathway and impact to receptors in accordance with the *Guideline: Risk assessments* (DWER 2020).

To establish a Risk Event there must be an emission, a receptor which may be exposed to that emission through an identified actual or likely pathway, and a potential adverse effect to the receptor from exposure to that emission.

3.1 Source-pathways and receptors

3.1.1 Emissions and controls

The key emissions and associated actual or likely pathway during premises construction and operation which have been considered in this Amendment Report are detailed in Table 2 below. Table 2 details the proposed control measures the Licence Holder has proposed to assist in controlling these emissions, where necessary.

Table 2: Licence Holder controls

Emission	Sources	Potential pathways	Controls
Construction			
Dust	Construction of the dewatering pipelines and associated ground disturbing activities and mobile equipment (including light vehicles) Vehicle/machinery movements.	Air/windborne pathway	<ul style="list-style-type: none"> Water trucks will be used to suppress dust where applicable. Vehicle movements will be controlled where necessary including reduced vehicle speeds during operations. Activities that have the potential to generate high dust levels (i.e. construction and earthworks) will be restricted where there is risk of windy conditions.
Operation			
Mine dewater	Discharge of mine water into Lens A and Lens B	Overland runoff from overtopping of pits	<ul style="list-style-type: none"> Pits will have sufficient excess storage capacity to contain baseline discharge volumes and runoff from a Probable Maximum Precipitation (PMP) event. Operational pit water levels will be maintained below pre-mining groundwater levels. Discharge volumes will be monitored via flow meters. Monthly monitoring of cumulative discharge volumes will be undertaken to ensure there is sufficient volume remaining in the pit.
	Discharge of mine water into SGE Pit 2		<ul style="list-style-type: none"> Operational pit water levels will be maintained below pre-mining groundwater levels. Discharge volumes will be monitored via flow meters. Monthly monitoring of cumulative discharge volumes will be undertaken to ensure there is sufficient volume remaining in the pit.
	Transportation of mine water through pipelines	Overland runoff from spills and pipeline failure	<ul style="list-style-type: none"> Pipeline will be installed with isolation valves to minimise leaks should failure occur. Routine maintenance activities such as inspections, cleaning, lubrication, and equipment calibration will be undertaken. Pipeline will be installed with shut-off valves and surveillance system to minimise disturbance should failure

Emission	Sources	Potential pathways	Controls
	Storage of mine water in Lens A and Lens B	Seepage	<p>occur.</p> <ul style="list-style-type: none"> • Monthly monitoring of cumulative discharge volumes will be undertaken to ensure there is sufficient volume remaining in the pit. • Operational pit water levels will be maintained below pre-mining groundwater levels. • Groundwater abstraction to support operational requirements and site water balance objectives will be carried out in accordance with Groundwater Licence (GWL) 107421 and the supporting Greater Brockman 2 / Nammuldi and Silvergrass East Operations GWOS.
	Storage of mine water in SGE Pit 2		<ul style="list-style-type: none"> • Monthly monitoring of cumulative discharge volumes will be undertaken to ensure there is sufficient volume remaining in the pit. • Operational pit water levels will be maintained below pre-mining groundwater levels. • Groundwater abstraction to support operational requirements and site water balance objectives will be carried out in accordance with Groundwater Licence (GWL) 107421 and the supporting Greater Brockman 2 / Nammuldi and Silvergrass East Operations GWOS.

3.1.2 Receptors

In accordance with the *Guideline: Risk assessments* (DWER 2020), the Delegated Officer has excluded employees, visitors and contractors of the Licence Holder's from its assessment. Protection of these parties often involves different exposure risks and prevention strategies, and is provided for under other state legislation.

Table 3 below provides a summary of potential human and environmental receptors that may be impacted as a result of activities upon or emission and discharges from the prescribed premises (*Guideline: Environmental siting* (DWER 2020)).

Table 3: Sensitive human and environmental receptors and distance from prescribed activity

Environmental receptors	Distance from prescribed activity
Native vegetation	Within the premises and surrounding the proposed discharge locations.
Fauna	Groundwater dependant ecosystems, including significant fauna habitat, occur within the Premises.
Groundwater	The Premises is located within an area characterised by groundwater dependant ecosystems.
Surface water	A number of surface water bodies, including the cultural heritage site Caves Creek, are located within the Premises.
Cultural receptors	Distance from prescribed activity
Aboriginal heritage sites	Mt Brockman Station Burial – located within 500 m of the proposed SGE pit discharge point. ID: 5419 Narraminju (Caves Creek) – located within 500 m of the proposed SGE pit discharge point. ID: 14979

3.2 Risk ratings

Risk ratings have been assessed in accordance with the *Guideline: Risk Assessments* (DWER 2020) for those emission sources which are proposed to change and takes into account potential source-pathway and receptor linkages as identified in Section 3.1. Where linkages are incomplete they have not been considered further in the risk assessment.

Where the Licence Holder has proposed mitigation measures/controls (as detailed in Section 3.1), these have been considered when determining the final risk rating. Where the Delegated Officer considers the Licence Holder’s proposed controls to be critical to maintaining an acceptable level of risk, these will be incorporated into the licence as regulatory controls.

Additional regulatory controls may be imposed where the Licence Holder’s controls are not deemed sufficient. Where this is the case the need for additional controls will be documented and justified in Table 4.

The Revised Licence L5258/1991/11 that accompanies this Amendment Report authorises emissions associated with the operation of the Premises i.e. category 6 activities.

The conditions in the Revised Licence have been determined in accordance with *Guidance Statement: Setting Conditions* (DER 2015).

Table 4. Risk assessment of potential emissions and discharges from the Premises during construction and operation

Risk Event					Risk rating C = consequence L = likelihood	Applicant controls sufficient?	Conditions of licence	Justification for additional regulatory controls
Source/Activities	Potential emissions	Potential pathways and impact	Receptors	Applicant controls				
Construction								
Construction of the dewatering pipelines and associated ground disturbing activities and mobile equipment (including light vehicles) Vehicle/machinery movements.	Dust	Pathway: Air/windborne pathway Impact: Potential impacts to vegetation health and amenity of fauna habitat, surface water and cultural heritage sites	Native vegetation Fauna Surface water Aboriginal cultural heritage	Refer to Section 3.1.1	C = Slight L = Possible Low Risk	Y	Condition 18, Table 3	The construction of the pipeline and associated dewatering infrastructure, including discharge point, are not considered to present a significant risk to the listed receptors due to construction works being undertaken in highly disturbed areas. No ground disturbance within vicinity of Aboriginal cultural heritage sites is

Risk Event					Risk rating C = consequence L = likelihood	Applicant controls sufficient?	Conditions of licence	Justification for additional regulatory controls
Source/Activities	Potential emissions	Potential pathways and impact	Receptors	Applicant controls				
								proposed.
Operation								
Discharge into, and storage of mine water in Lens A, Lens B and SGE Pit 2	Mine dewater	<p>Pathway: Overland runoff from overtopping of pits</p> <p>Impact: Ecosystem disturbance and impact to groundwater and surface water quality</p>	<p>Groundwater dependent ecosystems</p> <p>Surface water ecosystems including those with Aboriginal cultural heritage</p>	Refer to Section 3.1.1	<p>C = Minor</p> <p>L = Rare</p> <p>Low Risk</p>	Y	<p>Condition 22, Table 4,</p> <p>Condition 23, Table 5</p>	<p>Modelling undertaken indicates that discharges are unlikely to result in groundwater mounding or to go above the pre-mining groundwater level for all pits (refer Section 2.2.2).</p> <p>Modeling also indicates that the seepage from the pits is unlikely to expand beyond the premises and will be contained (refer section 2.2.2.).</p> <p>Groundwater monitoring condition 23 has been added to monitor groundwater levels and quality around the pits and the wider MAR scheme.</p> <p>Conditions 5 and 8 in Part</p>

Risk Event					Risk rating C = consequence L = likelihood	Applicant controls sufficient?	Conditions of licence	Justification for additional regulatory controls
Source/Activities	Potential emissions	Potential pathways and impact	Receptors	Applicant controls				
								B4-1 of MS 1246 require the Licence Holder to ensure groundwater mounding above pre-mining groundwater levels within mine pits does not occur, and that there is no disturbance to groundwater and groundwater ecosystems including surface water bodies such as the culturally significant Caves Creek.
		<p>Pathway: Groundwater mounding and Seepage front</p> <p>Impact: Ecosystem disturbance and impact to groundwater and surface water quality</p>		Refer to Section 3.1.1	<p>C = Minor L = Rare Low Risk</p>	Y	<p>Condition 22, Table 4, Condition 23, Table 5</p>	

Risk Event					Risk rating C = consequence L = likelihood	Applicant controls sufficient?	Conditions of licence	Justification for additional regulatory controls
Source/Activities	Potential emissions	Potential pathways and impact	Receptors	Applicant controls				
Transportation of mine water through pipelines	Mine dewater	<p>Pathway: Overland runoff from spills and pipeline failure</p> <p>Impact: Ecosystem disturbance and impact to surface water quality</p>	<p>Native vegetation</p> <p>Fauna</p> <p>Surface water</p> <p>Aboriginal cultural heritage</p>	Refer to Section 3.1.1	<p>C = Slight</p> <p>L = Unlikely</p> <p>Low Risk</p>	Y	Condition 22, Table 4	N/A

Note 1: Consequence ratings, likelihood ratings and risk descriptions are detailed in the *Guideline: Risk assessments* (DWER 2020).

Note 2: Proposed Licence Holder's controls are depicted by standard text. **Bold and underline text** depicts additional regulatory controls imposed by department.

4. Consultation

Table 5 provides a summary of the consultation undertaken by the department.

Table 5: Consultation

Consultation method	Comments received	Department response
Application advertised on the department's website on 13/04/2026	No comments received.	N/A
Shire of Ashburton advised of proposal on 13/04/2026	No comments received.	N/A
Wintawari Guruma Aboriginal Corporation advised of proposal on 13/04/2026	No comments received.	N/A
Works Approval/Licence Holder was provided with draft amendment on (Date)	Refer to Appendix 1	Refer to Appendix 1

5. Conclusion

Based on the assessment in this Amendment Report, the Delegated Officer has determined that a Revised Licence will be granted, subject to conditions commensurate with the determined controls and necessary for administration and reporting requirements.

5.1 Summary of amendments

Table 6 provides a summary of the proposed amendments and will act as record of implemented changes. All proposed changes have been incorporated into the Revised Licence as part of the amendment process.

Table 6: Summary of licence amendments

Condition no.	Proposed amendments
Condition 15	Added Lens A, Lens B and SGE Pit 2 as authorised discharge points.
Condition 16	Added monthly cumulative water volume monitoring requirements for Lens A, Lens B and SGE Pit 2.
Condition 17	Added Lens A, Lens B and SGE Pit 2 to require dewatering discharge to flow through a gabion outlet.
Table 3, Condition 18	Added construction requirements for the Lens A, Lens B and SGE Pit 2 pipelines.
Table 4, Condition 19	Added operational requirements for the Lens A, Lens B and SGE Pit 2 pipelines. Added operational requirements for the Lens A, Lens B and SGE Pit 2 discharge points.

Conditions 19 - 21	Added conditions requiring the audit and compliance reporting for infrastructure constructed in accordance with Condition 18, Table 3.
Table 5	Added groundwater and pit water monitoring requirements for Lens A, Lens B and SGE Pit 2.
Figure 7, Schedule 1	Updated figure to include the three (3) new authorised discharge locations at Lens A, Lens B and SGE Pit 2.
Figure 18, Schedule 1	Added figure showing the infrastructure overview for the Lens A and Lens B pipeline network and monitoring bore locations.
Figure 19, Schedule 1	Added figure showing the infrastructure overview for the SGE Pit 2 pipeline network and monitoring bore locations.
Multiple	Updated condition and table numbers as required. Note that these changes to condition numbers have not been highlighted to avoid confusion.

References

1. Department of Environment Regulation (DER) 2015, *Guidance Statement: Setting Conditions*, Perth, Western Australia.
2. Department of Water and Environmental Regulation (DWER) 2020, *Guideline: Environmental Siting*, Perth, Western Australia.
3. DWER 2020, *Guideline: Risk Assessments*, Perth, Western Australia.
4. Rio Tinto 2026, *Licence Amendment Supporting Documentation*, Perth, Western Australia.

Appendix 1: Summary of Licence Holder's comments on risk assessment and draft conditions

Condition	Summary of Licence Holder's comment	Department's response
Condition 13	The Licence holder notes a formatting error in the draft licence, whereby the condition numbering resets to Condition 1 from page 6. As a result, the condition numbers and associated references are misaligned from this point onward in the draft licence.	This appears to be an issue with converting the document to PDF, as the error is not present in the word version. Efforts are to be made to prevent this conversion error in the final version.
Condition 17	The Licence holder notes that there is only one authorised discharge outlet at Duck Creek and has amended the condition to reflect this.	The condition has been updated to reflect this.
Condition 18	The Licence holder requests that the condition be amended to specify discharge to one or both of Lens A and Lens B to reflect the assessed operational flexibility of the dewatering discharge system and to avoid any ambiguity regarding the condition intent. The central discharge strategy provides for initial discharge to Lens B from 2027, with potential commencement of discharge to Lens A from 2030 and may include periods of concurrent discharge to both pit voids. The environmental assessment considered discharge to Lens A only, Lens B only, and a staged approach (including concurrent discharge), all within a single maximum annual discharge volume and instantaneous flow rate. The proposed wording ensures the condition captures all assessed scenarios without increasing the approved discharge limits or altering the associated risk profile. In addition, the use of "to one or both of" recognises that infrastructure for Lens A and Lens B may be constructed and commissioned at different times and provides flexibility to demonstrate compliance with Conditions 19 and 20 as the discharge infrastructure becomes operational.	Noted. To avoid potential future non-compliance as a result of either Lens A or Lens B pipelines not being installed, or not being installed together, these have been separated into distinct items.
Condition 22	See rationale for requested changes to Condition 18: Table 3: Infrastructure (above).	Noted, these items have been separated as per the above.
Amendment report, Section 2.2.3	We note that the values presented in the water balance summary section of the amendment report appear to have been transposed between Lens A and Lens B. For clarity, the correct depth to water levels is: <ul style="list-style-type: none"> • Lens A: 45.8 m • Lens B: 64.8 m These numbers are now consistent with other supporting documents.	Noted and this has been corrected.