



Application for Licence Amendment

Part V Division 3 of the *Environmental Protection Act 1986*

Licence Number	L8733/2013/1
Licence Holder	Atlas Iron Pty Ltd
ACN	110 396 168
File Number	INS-0001837
Premises	Abydos Direct Shipping Ore Project Mining Tenements – M45/1179, L45/204, L45/207, and L45/285 MARBLE BAR WA 6760
Date of Report	12 August 2025 (FINAL)
Proposed Decision	Revised licence granted

Table of Contents

1. Decision summary	1
2. Scope of assessment	1
2.1 Regulatory framework	1
2.2 Application summary	1
3. Risk assessment.....	3
3.1 Source-pathways and receptors	4
3.1.1 Emissions and controls	4
3.1.2 Receptors.....	6
3.2 Risk ratings.....	10
4. Consultation	14
5. Conclusion	14
5.1 Summary of amendments.....	14
References.....	18
Appendix 1: Summary of Licence Holder’s comments on risk assessment and draft conditions	19

Table 1: Licence Holder controls.....	4
Table 2: Sensitive human and environmental receptors and distance from prescribed activity.	7
Table 3. Risk assessment of potential emissions and discharges from the Premises during construction and operation	11
Table 4: Consultation	14
Table 5: Consolidation of licence conditions in this amendment.....	14
Figure 1: Location of the proposed crushing and screening facility.....	2
Figure 2: Layout of proposed crushing and screening plant	3
Figure 3: Siting and location of sensitive receptors surrounding the prescribed premises	9

1. Decision summary

Licence L8733/2013/1 is held by Atlas Iron Pty Ltd (Licence Holder) for the Abydos Direct Shipping Ore Project (the Premises), located at mining tenements M 45/1179, L 45/204, L 45/207 and L 45/285.

This Amendment Report documents the assessment of potential risks to the environment and public health from proposed changes to the emissions and discharges during construction and operation of the Premises. As a result of this assessment, Revised Licence L8733/2013/1 has been granted.

The Revised Licence issued as a result of this amendment consolidates and supersedes the existing Licence/Works Approval previously granted in relation to the Premises. The Revised Licence has been granted in a new format with existing conditions being transferred, but not reassessed, to the new format.

2. Scope of assessment

2.1 Regulatory framework

In completing the assessment documented in this Amendment Report, the department has considered and given due regard to its Regulatory Framework and relevant policy documents which are available at <https://dwer.wa.gov.au/regulatory-documents>.

2.2 Application summary

On 26 February 2025, the Licence Holder submitted an application to the department to amend Licence L8733/2013/1 under section 59 and 59B of the *Environmental Protection Act 1986* (EP Act).

This amendment is limited to the installation of a secondary mobile crushing and screening facility (Figure 2) to provide additional crushing capacity to meet production targets. The location of the proposed crushing and screening facility is shown in Figure 1.

The applicant does not intend to exceed the existing production capacity of Category 5. No changes to the aspects of the existing Licence relating to Category 5, 85 and 89 have been requested by the Licence Holder.

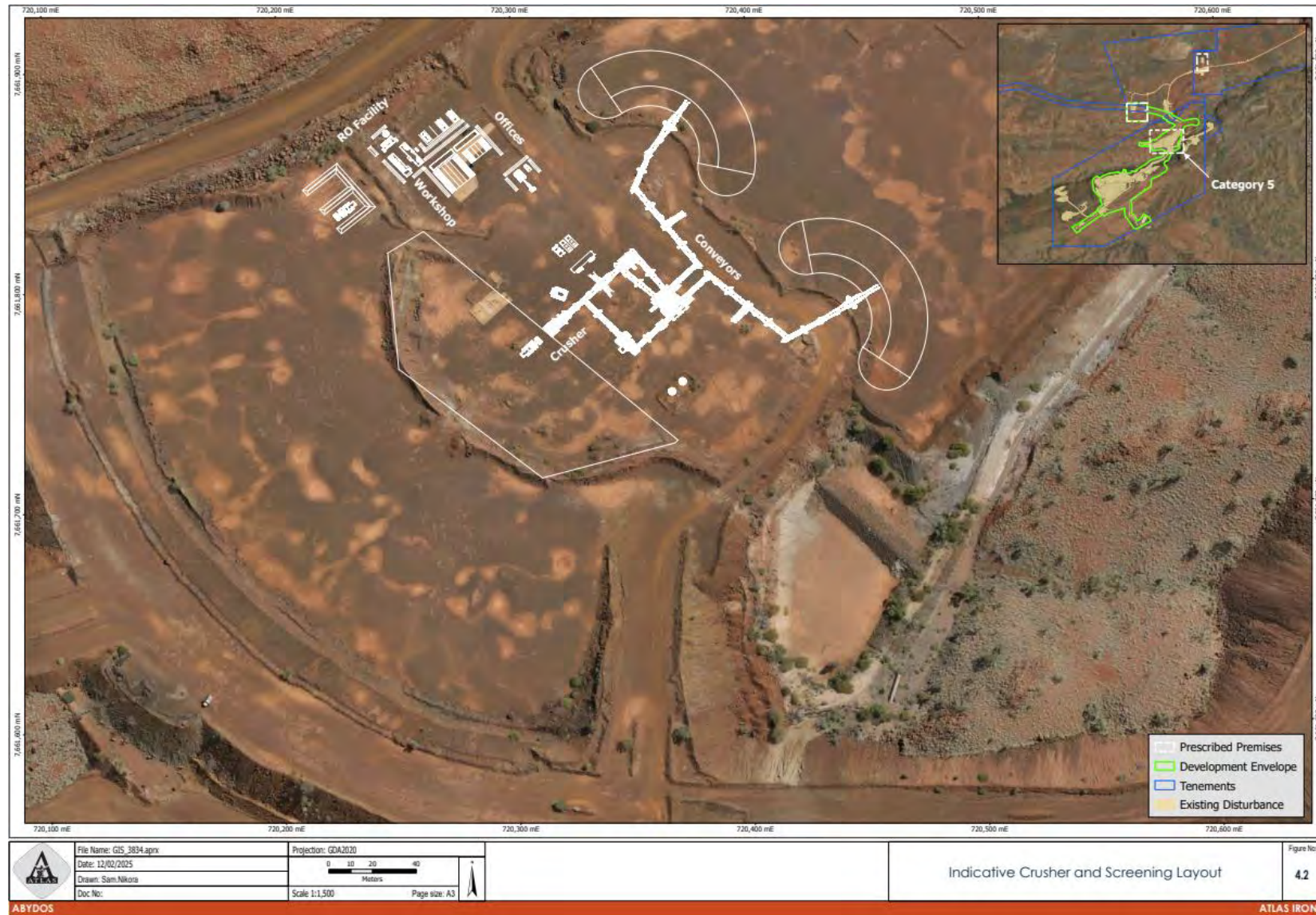


Figure 1: Location of the proposed crushing and screening facility

Licence: L8733/2013/1

IR-T15 Amendment report template v3.0 (May 2021)

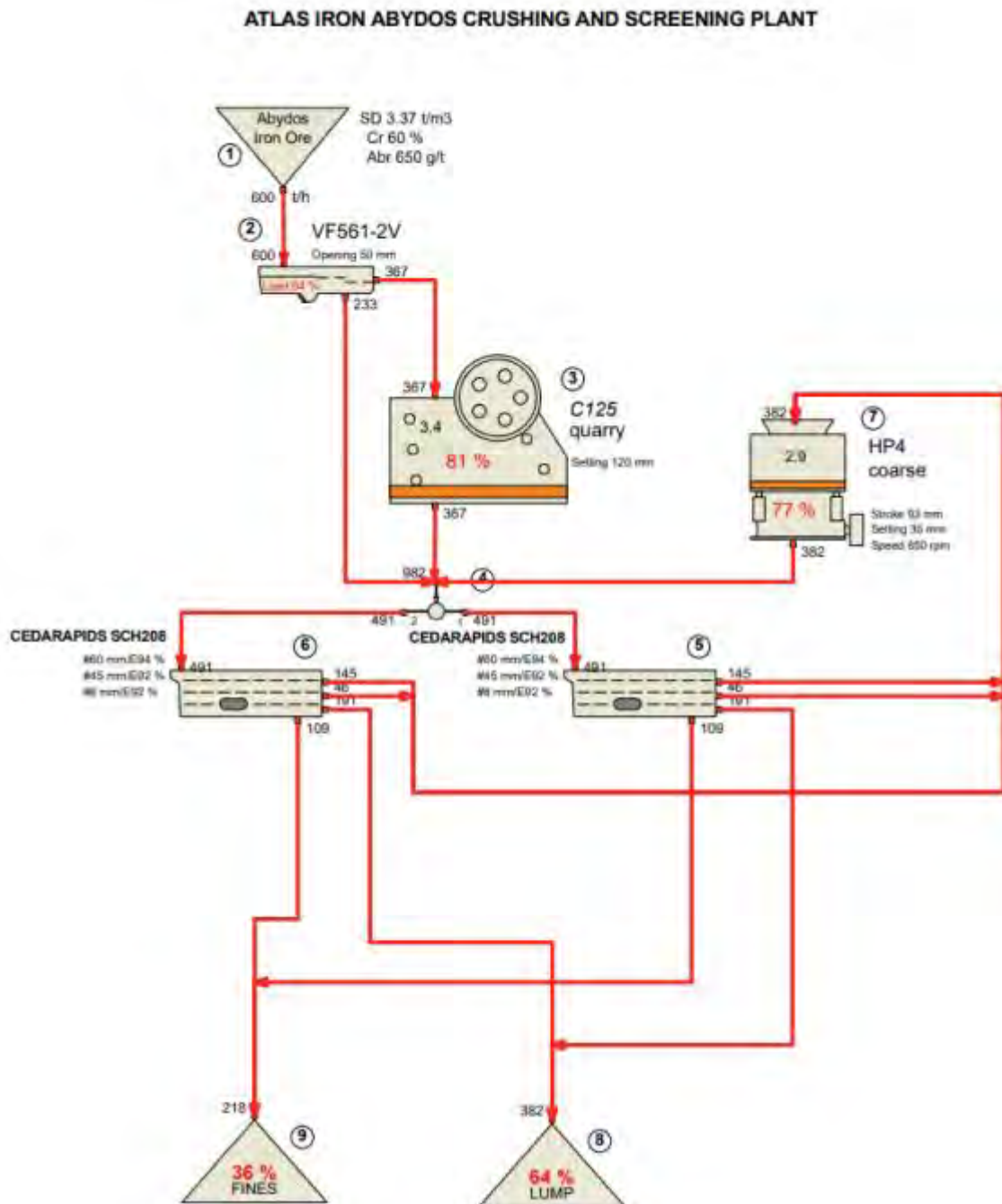


Figure 2: Layout of proposed crushing and screening plant

3. Risk assessment

The department assesses the risks of emissions from prescribed premises and identifies the potential source, pathway and impact to receptors in accordance with the *Guideline: Risk assessments* (DWER 2020).

To establish a Risk Event there must be an emission, a receptor which may be exposed to that emission through an identified actual or likely pathway, and a potential adverse effect to the receptor from exposure to that emission.

3.1 Source-pathways and receptors

3.1.1 Emissions and controls

The key emissions and associated actual or likely pathway during premises construction and operation which have been considered in this Amendment Report are detailed in

Table 1 below.

Table 1 also details the proposed control measures the Licence Holder has proposed to assist in controlling these emissions, where necessary.

Table 1: Licence Holder controls

Emission	Sources	Potential pathways	Proposed controls
Construction			
Dust	Installation of crushing and screening of material	Air/windborne pathway	<ul style="list-style-type: none"> Majority of the mobile crushing equipment is to be fabricated offsite and brought to site to be assembled. Implementation of the Dust Management Procedure (950-EN-PRO-0003). Water carts will be utilised for regular dust suppression. Vehicle speeds limits will be imposed and enforced on all Project roads.
Noise	Installation of crushing and screening of material	Air/windborne pathway	<ul style="list-style-type: none"> Majority of the mobile crushing equipment is to be fabricated offsite and brought to site to be assembled. All noise emissions will be compliant with the Environmental Protection (Noise) Regulations 1997. Long term monitoring equipment has been established in caves around the project to monitor ongoing Pilbara Leaf Nosed Bat and Ghost Bat activity, as well as annual monitoring of significant species to assess/monitor potential impacts from noise. <p>Significant Species Monitoring has occurred at the site annually since 2012. The most recent monitoring was completed in 2022 with future monitoring scheduled for 2025 to at least 2029. Monitoring looks at fauna activity and compares to baseline findings. Survey monitoring is voluntarily reported in</p>

Emission	Sources	Potential pathways	Proposed controls
			annual reports to the Department of Mines, Petroleum and Exploration (DMPE).
Operation			
Dust	Crushing of material, vehicle movements, lift-off from stockpiles and/or stored product, earthworks etc.	Air/windborne pathway	<ul style="list-style-type: none"> Implementation of the Dust Management Procedure (950-EN-PRO-0003). Installation and operation of water sprayers on the feed bin, strategic conveyor transfer points and stacker head chutes. Dust suppression (via conditioning by the use of water cart) on the product stockpiles. Dust suppression (via water cart) on access roads and work areas within the crushing and screening facility to minimise dust from vehicles and equipment (e.g., bobcats, loaders). Vehicle speeds limits will be imposed and enforced on all Project roads.
Noise	Crushing and screening of material	Air/windborne pathway	<ul style="list-style-type: none"> All noise emissions will be compliant with the <i>Environmental Protection (Noise) Regulations 1997</i>. Long term monitoring equipment has been established in caves around the project to monitor ongoing Pilbara Leaf Nosed Bat and Ghost Bat activity, as well as annual monitoring of significant species to assess/monitor potential impacts from noise.
Sediment laden stormwater	Overland and stockpile runoff	Surface runoff Seepage to soil and groundwater	<ul style="list-style-type: none"> The ROM pad has been constructed so that all stormwater flow is diverted to the sedimentation basin and drainage channels. Stormwater drains and sedimentation basins have been constructed and are in place to contain any stormwater received. The crusher and screening facility is surrounded by an earthen bund to prevent ingress and egress of storm water.

Emission	Sources	Potential pathways	Proposed controls
			<ul style="list-style-type: none"> Stormwater collected within the ROM pad will be directed to a sedimentation basin to allow for sediment removal prior to discharge. Stormwater drains and sedimentation basins have been constructed based on a 5-year ARI 72-hour event. The capacity of the pond is ~ 4,500m² at 3 m deep and has capacity to contain any stormwater received over the two-year mine life.
Miscellaneous Activities			
Hydrocarbon spills or leaks	<p>Construction and operation of crushing and screening facility</p> <p>Vehicle and equipment movements operation on unsealed roads</p>	<p>Surface runoff</p> <p>Seepage to soil and groundwater</p>	<ul style="list-style-type: none"> Hydrocarbons and dangerous goods and hazardous substances will be stored and handled in accordance with the Dangerous Goods (Storage and Handling of Non-explosives) Safety Regulations 2007, relevant Australian Standards including the design specifications of AS 1940 – Storage and Handling of Flammable and Combustible Liquids and relevant MSDS. Adherence to the Atlas Hydrocarbon Management. Spill recovery and clean up materials will be maintained at all hydrocarbon/hazardous material storage areas. Relevant employees and contractors will be trained in the use of this equipment. Contaminated soil shall be stockpiled for removal offsite by a licensed controlled waste contractor. Storage facilities for hydrocarbons/hazardous substances will be contained with impervious bunds and regularly inspected for evidence of leaks or spills. Procedure (950-EN-PRO-0008) and Hydrocarbon (and Chemical) Spill Management Procedure (950-EN-PRO-0007) at all times.

3.1.2 Receptors

In accordance with the *Guideline: Risk assessments* (DWER 2020), the Delegated Officer has excluded employees, visitors and contractors of the Licence Holder's from its assessment. Protection of these parties often involves different exposure risks and prevention strategies, and is provided for under other state legislation.

Table 2 below provides a summary of potential human and environmental receptors that may be impacted as a result of activities upon or emission and discharges from the prescribed premises (*Guideline: Environmental siting* (DWER 2020)).

Table 2: Sensitive human and environmental receptors and distance from prescribed activity

Human receptors	Distance from prescribed activity
Pastoral Lease	The nearest pastoral stations are located directly adjacent north and around 3 km north-northeast respectively from the premises boundary.
Crown Reserve (Timber Reserve)	The nearest crown reserve is located 1.3 km northeast.
Environmental receptors	Distance from prescribed activity
Flora	A variety of flora species have been recorded 6 times within a 1km boundary of the prescribed premises The applicant has identified the nearest Pilbara foxglove (<i>Quoya zonalis</i>) as 700m South-East of the prescribed premises
Fauna	A variety of fauna species have been recorded 314 times within a 1km boundary of the prescribed premises The applicant has identified: <ul style="list-style-type: none"> Northern Quoll (<i>Dasyurus hallucatus</i>) (Endangered) Pilbara Leaf-nosed Bat (<i>Rhynonictis aurantia</i> (Pilbara form)) (Vulnerable) Ghost Bat (<i>Macroderma gigas</i>) (Vulnerable) Pilbara Olive Python (<i>Liasis olivaceus barroni</i>) (Vulnerable) as within or adjacent to the prescribed premises
Underlying groundwater	Marble Bar Water Reserve - Located approximately 60 km South-East.
Surface waterlines	Two non-perennial rivers are located over 200m from the prescribed activity
Threatened and Priority Ecological Communities (TEC and PEC)	A TEC is located approximately 54km North-West of the prescribed premises
Cultural receptors	Distance from prescribed activity
Aboriginal heritage site	There are 3 aboriginal heritage sites around 100m of the proposed activity: <ul style="list-style-type: none"> Abydos 04-12 (ACH-00032453) – Grinding

	<p>areas/grooves - North</p> <ul style="list-style-type: none">• Abydos 05-12 (ACH-00032454) – Grinding areas/grooves – North-east• Abydos 01-12 (ACH-00032452) – Grinding areas/grooves – South-west
--	--

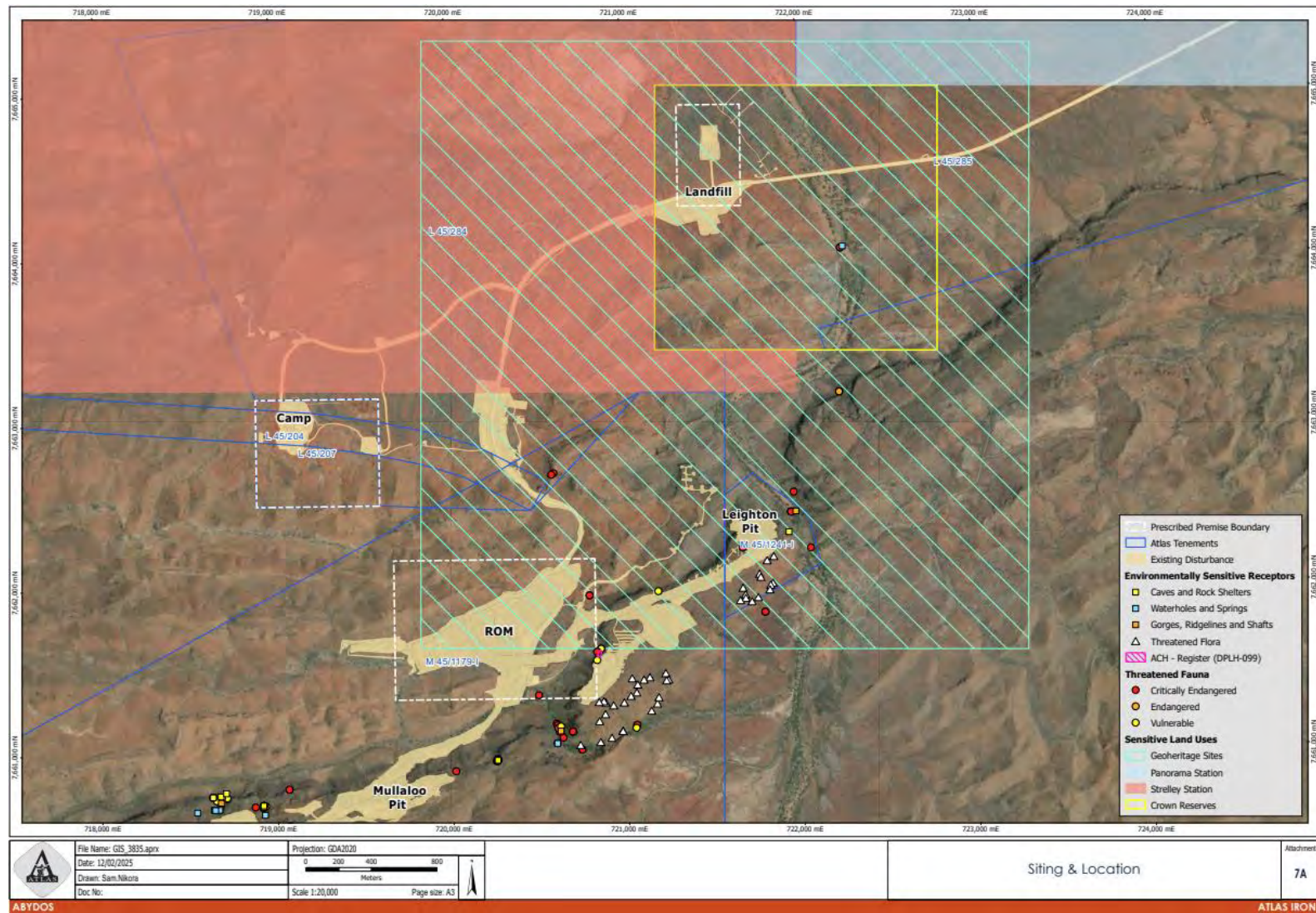


Figure 3: Siting and location of sensitive receptors surrounding the prescribed premises

3.2 Risk ratings

Risk ratings have been assessed in accordance with the *Guideline: Risk Assessments* (DWER 2020) for those emission sources which are proposed to change and takes into account potential source-pathway and receptor linkages as identified in Section 0. Where linkages are incomplete they have not been considered further in the risk assessment.

Where the Licence Holder has proposed mitigation measures/controls (as detailed in Section 0), these have been considered when determining the final risk rating. Where the Delegated Officer considers the Licence Holder's proposed controls to be critical to maintaining an acceptable level of risk, these will be incorporated into the licence as regulatory controls.

Additional regulatory controls may be imposed where the Licence Holder's controls are not deemed sufficient. Where this is the case the need for additional controls will be documented and justified in Table 3.

The Revised Licence L8733/2013/1 that accompanies this Amendment Report authorises emissions associated with the operation of the Premises i.e. Category 5 activities.

The conditions in the Revised Licence have been determined in accordance with *Guidance Statement: Setting Conditions* (DER 2015).

Table 3. Risk assessment of potential emissions and discharges from the Premises during construction and operation

Risk Event					Risk rating ¹ C = consequence L = likelihood	Licence Holder's controls sufficient?	Conditions ² of licence	Justification for additional regulatory controls / DWER comments
Source/Activities	Potential emission	Potential pathways and impact	Receptors	Licence Holder's controls				
Construction								
Placement and assembly of mobile crushing and screening facility and associated equipment including vehicle movements (reversing beepers)	Dust	Pathway: Air/windborne pathway Impact: Smothering of native vegetation inhibiting photosynthesis/growth cycle. Reduction in amenity and health of local fauna.	Flora – refer to Table 2 Fauna – refer to Table 2	Refer to Section 3.1.1	C = Moderate L = Possible Medium Risk	Y	Condition 1 – Design and construction / installation requirements Condition 6 – Dust controls	The applicant's management controls for dust are sufficient in minimising the impact to the environment.
	Noise	Pathway: Air/windborne pathway Impact: Reduction in amenity and health of local fauna.	Fauna – refer to Table 2	Refer to Section 3.1.1	C = Moderate L = Possible Medium Risk	Y	N/A	The <i>Environmental Protection (Noise) Regulations 1997</i> apply
Operation								
Screening, crushing, unloading, loading and storage of material Vehicle movements	Dust	Pathway: Air/windborne pathway Impact: Smothering of native vegetation inhibiting photosynthesis/	Flora – refer to Table 2 Fauna – refer to Table 2	Refer to Section 3.1.1	C = Moderate L = Possible Medium Risk	Y	Condition 4 – Operational requirements Condition 6 – Dust controls	The applicant's management controls for dust are sufficient in minimising the impact to the environment.

Risk Event					Risk rating ¹ C = consequence L = likelihood	Licence Holder's controls sufficient?	Conditions ² of licence	Justification for additional regulatory controls / DWER comments
Source/Activities	Potential emission	Potential pathways and impact	Receptors	Licence Holder's controls				
		growth cycle. Reduction in amenity and health of local fauna.						
	Noise	Pathway: Air/windborne pathway Impact: Reduction in amenity and health of local fauna.	Fauna – refer to Table 2	Refer to Section 3.1.1	C = Moderate L = Possible Medium Risk	Y	N/A	The <i>Environmental Protection (Noise) Regulations 1997</i> also apply
	Sediment laden stormwater	Pathway: Overland runoff Impact: Ecosystem disturbance or impact to surface water quality	Non perennial rivers adjacent to the prescribed activity area – refer to Table 2	Refer to Section 3.1.1	C = Moderate L = Unlikely Medium Risk	Y	Condition 8 – Stormwater management	The Delegated Officer finds the existing stormwater management conditions to be sufficient in minimising the impacts of stormwater ingress and runoff.
Miscellaneous activities								
General mining activities	Spills and leaks of hydrocarbons	Pathway: direct discharge to land; seepage to ground and underlying groundwater; and/or run-off into ephemeral drainage lines Impact: adverse effects on local soils and impact to surface water quality Impact: Reduction in	Non perennial rivers adjacent to the prescribed activity area – refer to Table 2	Refer to Section 3.1.1	C = Minor L = Unlikely Medium Risk	Y	Condition 7 – Management of spills and leaks of environmentally hazardous materials.	The Delegated Officer finds the existing conditions to be sufficient in minimising the impacts of spills and leaks of environmentally hazardous materials.

Risk Event					Risk rating ¹ C = consequence L = likelihood	Licence Holder's controls sufficient?	Conditions ² of licence	Justification for additional regulatory controls / DWER comments
Source/Activities	Potential emission	Potential pathways and impact	Receptors	Licence Holder's controls				
		amenity and health of local fauna.						

Note 1: Consequence ratings, likelihood ratings and risk descriptions are detailed in the *Guideline: Risk assessments* (DWER 2020).

Note 2: Proposed Licence Holder's controls are depicted by standard text. **Bold and underline text** depicts additional regulatory controls imposed by department.

4. Consultation

Table 4 provides a summary of the consultation undertaken by the department.

Table 4: Consultation

Consultation method	Comments received	Department response
<i>Local Government Authority advised of proposal 11 April 2025</i>	<i>None</i>	<i>N/A</i>
<i>Works Approval/Licence Holder was provided with draft amendment on 05 August 2025</i>	<i>Refer to Appendix 1</i>	<i>Refer to Appendix 1</i>

5. Conclusion

Based on the assessment in this Amendment Report, the Delegated Officer has determined that a Revised Licence will be granted, subject to conditions commensurate with the determined controls and necessary for administration and reporting requirements.

5.1 Summary of amendments

Error! Reference source not found. provides a summary of the proposed amendments and will act as record of implemented changes. All proposed changes have been incorporated into the Revised Licence as part of the amendment process.

Table 5: Consolidation of licence conditions in this amendment

Existing condition	Item	Amended Condition	Comments and changes
-	<i>All conditions</i>	<i>All</i>	<i>'Shall' replaced with 'Must' as per standard licensing approach</i>
1.1.1 1.1.3 1.1.4	<i>General</i>	<i>N/A</i> <i>Interpretation section,</i>	<i>Revised to current licensing format – refer to 'Interpretation' section of revised licence.</i>
1.1.2	<i>Definitions</i>	<i>Definitions section and Table 1</i>	<i>Revised to current licensing format.</i>
1.2.1	<i>Emissions</i>	<i>N/A</i>	<i>Redundant condition. Deleted from licence.</i> <i>Requirements are adequately covered by general provisions of the EP Act and related EP Regulations.</i>
1.2.2	<i>Pollution control and monitoring equipment</i>	<i>N/A</i>	<i>Redundant condition. Adequately covered by alternative existing conditions. Deleted from licence.</i>
1.2.3	<i>Storage of environmentally hazardous materials</i>	<i>N/A</i>	<i>Redundant condition. Deleted from licence.</i>

Existing condition	Item	Amended Condition	Comments and changes
			<i>Requirements are adequately regulated by the Dangerous Goods Safety Act 2004</i>
1.2.4	<i>Recovery and removal of spills</i>	7	<i>New numbering</i>
1.2.5	<i>Prevention of contamination and containment of contaminated stormwater</i>		<i>Redundant condition. Deleted from the licence. General provisions of the EP Act and the Environmental Protection (Unauthorised Discharges) Regulations 2004 apply.</i>
1.3.1	<i>Record and investigate exceedances of limits or targets</i>	N/A	<i>Redundant condition. Deleted from licence.</i>
1.3.2	<i>Waste acceptance specifications</i>	8	<i>New numbering and update to wording format</i>
1.3.3	<i>Waste acceptance</i>	N/A	<i>Redundant condition. Deleted from licence.</i>
1.3.4	<i>Waste processing</i>	9	<i>New numbering and update to wording format</i>
1.3.5	<i>Landfill operational requirements</i>	4	<i>Redundant condition. Revised to current licensing format. Moved to operations table</i>
1.3.6	<i>Containment Infrastructure</i>	5	<i>New numbering and update to wording format</i>
1.3.7	<i>Management of irrigation of treated wastewater</i>	4	<i>Revised to current licensing format. Moved to operations table</i>
1.3.8	<i>Management of wastewater treatment vessels</i>	4	<i>Redundant condition. Revised to current licensing format. Moved to Table 2: Infrastructure and equipment requirements</i>
1.3.9	<i>Signage for authorised access</i>	4	<i>Redundant condition. Revised to current licensing format. Moved to Table 2: Infrastructure and equipment requirements</i>
1.3.10	<i>Landfill cover requirements</i>	10	<i>New numbering and update to wording format</i>
1.3.11	<i>Prescribed premises security</i>	12	<i>New numbering</i>
1.3.12	<i>Windblown waste management</i>	11	<i>New numbering</i>
2.1.1	<i>Record and investigate exceedances of limits or targets</i>	N/A	<i>Redundant condition. Deleted from licence.</i>

Existing condition	Item	Amended Condition	Comments and changes
2.2-2.4	<i>Point source emissions to air, surface water and groundwater</i>	N/A	<i>Redundant condition. Deleted from licence</i>
2.5.1	<i>Emission to land</i>	13	<i>New numbering and update to wording format</i>
2.5.2	<i>Emission limits to land</i>	14	<i>New numbering and update to wording format</i>
2.5.3	<i>Emission targets to land</i>	15	<i>New numbering and update to wording format</i>
2.6.1	<i>Dust</i>	N/A	<i>Redundant condition. Adequately covered by s.49 of the EP Act 1986 and proposed new conditions. Deleted from licence.</i>
2.7	<i>Odour</i>	N/A	<i>Redundant condition. Adequately covered by s.49 of the EP Act 1986. Deleted from licence.</i>
2.8	<i>Noise</i>	N/A	<i>Redundant condition. Deleted from licence</i>
3.1.1	<i>Sample collection</i>	16	<i>New numbering and update to wording format</i>
3.1.2	<i>Monitoring timeframes</i>	17	<i>New numbering and update to wording format</i>
3.1.3	<i>Monitoring equipment management</i>	18 19 (new condition)	<i>New numbering, added condition, and update to wording format</i>
3.2	<i>Monitoring of point source emissions to air</i>	N/A	<i>Redundant condition. Deleted from licence</i>
3.3	<i>Monitoring of point source emissions to surface water</i>	N/A	<i>Redundant condition. Deleted from licence</i>
3.4	<i>Monitoring of point source emissions to groundwater</i>	N/A	<i>Redundant condition. Deleted from licence</i>
3.5	<i>Monitoring emissions to land</i>	20	<i>New numbering and update to wording format</i>
3.6.1	<i>Monitoring waste inputs and outputs</i>	21	<i>New numbering and update to wording format</i>
3.7	<i>Process Monitoring</i>	N/A	<i>Redundant condition. Deleted from licence</i>
3.8	<i>Ambient environmental quality monitoring</i>	N/A	<i>Redundant condition. Deleted from licence</i>
4	<i>Improvements</i>	N/A	<i>Redundant condition. Deleted from licence</i>

Existing condition	Item	Amended Condition	Comments and changes
5.1.1 5.1.3 5.1.4 5.1.5	<i>Records and complaints management</i>	22 23 24	<i>Redundant condition. Revised to current licensing format. New numbering</i>
5.1.2	<i>Knowledge of Licence Conditions</i>	N/A	<i>Redundant condition. Deleted from licence. The Licence Holder is responsible for the operation of the premises and compliance with related conditions.</i>
5.2.1	<i>Reporting</i>	25 and 26	<i>New numbering and update to wording format</i>
5.3.1	<i>Notifications</i>	27	<i>New numbering and update to wording format</i>
<i>Schedule 1: Maps</i>	<i>Premises map</i>	<i>Schedule 1: Maps</i>	<i>New naming convention, replaced Figure 1: Prescribed premises map and added Figure 5: Crushing & screening facility map</i>
<i>Schedule 2 Reporting & notifications</i>	<i>Annual Audit Compliance Report</i> <i>Form N1 Notification</i>	<i>Schedule 2: Forms</i>	<i>New numbering and update to wording format</i>

References

1. Department of Environment Regulation (DER) 2015, *Guidance Statement: Setting Conditions*, Perth, Western Australia.
2. Department of Water and Environmental Regulation (DWER) 2020, *Guideline: Environmental Siting*, Perth, Western Australia.
3. DWER 2020, *Guideline: Risk Assessments*, Perth, Western Australia.

Appendix 1: Summary of Licence Holder's comments on risk assessment and draft conditions

Condition	Summary of Licence Holder's comment	Department's response
Draft Licence Cover Page	The registered address for the business is 1314 Hay Street, West Perth WA 6005 4	The department has updated the cover page of the licence to reflect the change in business address.
Condition 1	Design and construction / installation requirements – clarification on design requirements for transfer points that are enclosed/covered.	Condition wording updated to reflect.