



Application for Licence Amendment

Part V Division 3 of the *Environmental Protection Act 1986*

Licence Number	L9020/2016/1
Licence Holder	Kimberley Quarry Pty Ltd
ACN	093 519 638
File Number	APP-0032832 INS-0001984
Premises	Hardrock Quarry Lot 20 East Chapman Road NARRA TARRA 6532 Being Part Lot 20 on Plan 6975
Date of Report	14/05/2026 (FINAL)
Proposed Decision	Revised licence granted

Table of Contents

1. Decision summary	1
2. Scope of assessment	1
2.1 Regulatory framework	1
2.2 Amendment Application summary	1
3. Risk assessment	1
3.1 Source-pathways and receptors	1
3.1.1 Emissions and controls	1
3.1.2 Receptors	3
3.2 Risk ratings	6
4. Consultation	8
5. Conclusion	8
5.1 Summary of amendments	8
References	9
Figure 1: Distance to residential receptors	4
Figure 2: Water courses	5

1. Decision summary

The Delegated Officer has determined to make amendments to Licence L9020/2016/1. The amendments are administrative in nature therefore they do not alter the risk profile of the Premises, providing that activities, emissions and receptors as stated in existing approvals remain unchanged.

This Amendment Report documents the amendments made pursuant to section 59 and 59(B) of the *Environmental Protection Act 1986* (EP Act).

2. Scope of assessment

2.1 Regulatory framework

In amending the licence, the department has considered and given due regard to its Regulatory Framework and relevant policy documents which are available at <https://dwer.wa.gov.au/regulatory-documents>.

2.2 Amendment Application summary

Licence L9020/2016/1 is held by Kimberley Quarry Pty Ltd (Licence Holder) for the Geraldton Hard Rock Quarry (the Premises), located at located at Lot 20 East Chapman Road, Narra Tarra 6532.

The Premises relates to the categories and the assessed production capacity under Schedule 1 of the *Environmental Protection Regulations 1987* (EP Regulations) which are defined in existing Licence L9020/2016/1.

On 27 January 2026, the Licence Holder submitted an application to the department to amend Licence L9020/2016/1 under section 59B of the *Environmental Protection Act 1986* (EP Act).

The Licence Holder is seeking an increase to supply approximately 1.1 million tonnes of granite armour, filter, and core rock from the Geraldton Hard Rock Quarry over an estimated two-year period. No additional crushing or screening circuits are proposed; the amendment is limited to an increase in Category 12 throughput under the existing licence.

3. Risk assessment

The department assesses the risks of emissions from prescribed premises and identifies the potential source, pathway and impact to receptors in accordance with the *Guideline: Risk assessments* (DWER 2020).

To establish a Risk Event there must be an emission, a receptor which may be exposed to that emission through an identified actual or likely pathway, and a potential adverse effect to the receptor from exposure to that emission.

3.1 Source-pathways and receptors

3.1.1 Emissions and controls

The key emissions and associated actual or likely pathway during premises operation which have been considered in this Amendment Report are detailed in Table 1 below. This table also details the proposed control measures the Licence Holder has proposed to assist in controlling these emissions, where necessary.

Table 1: Licence Holder controls

Emission	Sources	Potential pathways	Proposed controls
<i>Dust</i>	<p><i>Operating a mobile crushing and screening plant (i.e., crushing, screening, unloading/loading, and stockpiling of material),</i></p> <p><i>Vehicle movements, particularly road trucks</i></p>	<i>Air/windborne pathway</i>	<ul style="list-style-type: none"> • <i>Water suppression at crusher feed/transfer points.</i> • <i>Enclosed hoppers and rubber-lined chutes.</i> • <i>Water carts to be used during haulage.</i> • <i>Vehicle speed restrictions on unsealed roads</i> • <i>Stockpile height/orientation controls.</i> • <i>Watering the stockpile.</i> • <i>Meteorological monitoring.</i>
<i>Noise</i>		<i>Air/windborne pathway</i>	<ul style="list-style-type: none"> • <i>Maintain equipment in accordance with manufacturer specifications.</i> • <i>Select low-noise equipment where practicable.</i> • <i>To use enclosures and/or acoustic baffles on plant where required.</i> • <i>Schedule blasting activities for daytime hours and favourable meteorological conditions (where relevant), and provide community notification where appropriate.</i> • <i>Shut down engines when equipment is not in use (no unnecessary idling).</i> • <i>Maintain equipment to minimise noise.</i> • <i>Restrict noisy activities to daytime hours (0700–1800).</i>
<i>Sediment laden stormwater</i>		<i>Overland runoff causing contamination of surface water and/or groundwater</i>	<ul style="list-style-type: none"> • <i>Grade the pit floor to direct runoff to sediment basins/sumps and allow settling prior to any discharge. Seasonal—during rainfall.</i> • <i>Bunded impervious containment for fuels/chemicals.</i> • <i>Direct drainage to a sump</i> • <i>Maintain spill kits on site and use</i>

Emission	Sources	Potential pathways	Proposed controls
			<p><i>as required.</i></p> <ul style="list-style-type: none"> • <i>Install cut-off drains.</i> • <i>Shape batters to divert clean stormwater away from operational areas.</i>

3.1.2 Receptors

In accordance with the *Guideline: Risk assessments* (DWER 2020), the Delegated Officer has excluded employees, visitors and contractors of the Licence Holder's from its assessment. Protection of these parties often involves different exposure risks and prevention strategies, and is provided for under other state legislation.

Table 2 below provides a summary of potential human and environmental receptors that may be impacted as a result of activities upon or emission and discharges from the prescribed premises (*Guideline: Environmental siting* (DWER 2020)).

Table 2: Sensitive human and environmental receptors and distance from prescribed activity

Human receptors	Distance from activity / prescribed premises
Closest residential receptors	1700m north-west of the quarry 1500m west of the quarry
Environmental receptors	Distance from activity / prescribed premises
Watercourses	Located on the boundary of Stockpile Area 1 and another crosses the haul road near the entrance to Stockpile area 2
Cultural receptors	Distance from activity / prescribed premises
N/A	N/A

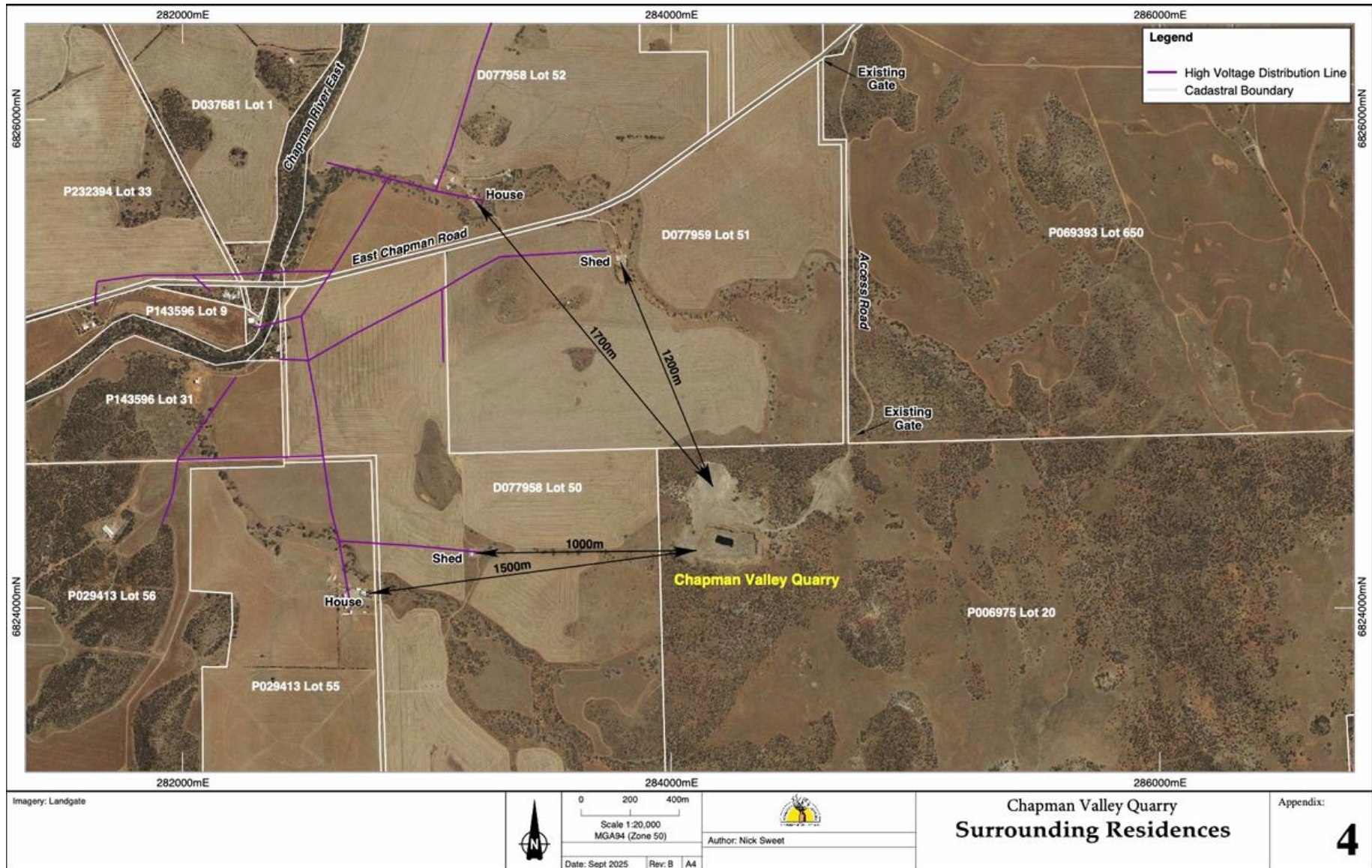


Figure 1: Distance to residential receptors



Figure 2: Water courses

3.2 Risk ratings

Risk ratings have been assessed in accordance with the *Guideline: Risk Assessments* (DWER 2020) for those emission sources which are proposed to change and takes into account potential source-pathway and receptor linkages as identified in Section 3.1. Where linkages are incomplete they have not been considered further in the risk assessment.

Where the Licence Holder has proposed mitigation measures/controls (as detailed in Section 3.1), these have been considered when determining the final risk rating. Where the Delegated Officer considers the Licence Holder's proposed controls to be critical to maintaining an acceptable level of risk, these will be incorporated into the licence as regulatory controls.

Additional regulatory controls may be imposed where the Licence Holder's controls are not deemed sufficient. Where this is the case the need for additional controls will be documented and justified in Table 3.

The Revised Licence L9020/2016/1 that accompanies this Amendment Report authorises emissions associated with the operation of the Premises i.e. Category 12 activities.

The conditions in the Revised Licence have been determined in accordance with *Guidance Statement: Setting Conditions* (DER 2015).

Table 3. Risk assessment of potential emissions and discharges from the Premises during operation

Risk Event					Risk rating ¹ C = consequence L = likelihood	Licence Holder's controls sufficient ?	Conditions ² of licence	Justification for additional regulatory controls / DWER comments
Source/Activities	Potential emission	Potential pathways and impact	Receptors	Licence Holder's controls				
Operation <i>(including time-limited-operations operations)</i>								
Screening, crushing, unloading, loading and storage of material Vehicle movements	Dust	Pathway: Air/windborne pathway Impact: Health and amenity	Closest residential receptors	<i>Refer to Section 5.1</i>	<i>C = Moderate</i> <i>L = Unlikely</i> Medium Risk	Y	N/A	The Delegated Officer finds that the proposed controls and distance from the closest residential receptor (1500 m) sufficient in managing the impacts of dust from site operations The general provision of the EP Act still apply (pollution or unreasonable emissions (section 49 of the EP Act), environmental harm (sections 50A, 50B and 50C of the EP Act), and notification of certain discharges of waste (section 72 of the EP Act).
	Noise	Pathway: Air/windborne pathway Impact: Health and amenity	Closest residential receptors	<i>Refer to Section 5.1</i>	<i>C = Minor</i> <i>L = Unlikely</i> Medium Risk	Y	N/A	The Delegated Officer finds the proposed controls and distance to the closest receptor (1500 m) to be sufficient in minimising the impacts of noise from the operations to residential receptors. <i>The Environmental Protection (Noise) Regulations 1997 apply.</i>
	Sediment laden stormwater	Pathway: Overland runoff Impact: Ecosystem disturbance or impact to surface water quality	Closest residential receptors Watercourse	<i>Refer to Section 5.1</i>	<i>C = Moderate</i> <i>L = Unlikely</i> Medium Risk	Y	Condition 2 – Stormwater infrastructure Condition 8 – Operation requirements	The Delegated Officer finds the current conditions in the licence as sufficient in managing the risk of stormwater runoff. <i>The Environmental Protection (Unauthorised Discharges) Regulations 2004 applies</i>

Note 1: Consequence ratings, likelihood ratings and risk descriptions are detailed in the *Guideline: Risk assessments* (DWER 2020).

Note 2: Proposed Licence Holder's controls are depicted by standard text. **Bold and underline text** depicts additional regulatory controls imposed by department.

4. Consultation

A draft licence amendment package was provided to the licence holder on 13 May 2026 for a 21-day consultation period. On 14 May 2026 the Licence Holder advised that Kimberley Quarry Pty Ltd reviewed the documentation and has no representations to make. The remainder of the comment period was waived.

5. Conclusion

Based on the assessment in this Amendment Report, the Delegated Officer has determined that an amended licence will be granted, subject to conditions commensurate with the determined controls and necessary for administration and reporting requirements.

5.1 Summary of amendments

Table 1 below provides a summary of the proposed amendments and will act as a record of implemented changes. All proposed changes have been incorporated into the Revised licence as part of the amendment process.

Table 4: Summary of Licence amendments

Condition no.	Proposed amendments
<i>Cover page</i>	<i>Category 12 throughput increase from 500,000 to 1,000,000 tonnes per annual period.</i>
<i>Condition 1</i>	<i>Process limit increase for Category 12 from 500,000 to 1,000,000 tonnes per annual period.</i>

References

1. *Application form and supporting documents submitted by Kimberley Quarry Pty Ltd on 11 March 2026.*
2. *Department of Environment Regulation (DER) 2015, Guidance Statement: Setting Conditions, Perth, Western Australia.*
3. *Department of Water and Environmental Regulation (DWER) 2020, Guideline: Environmental Siting, Perth, Western Australia.*
4. *DWER 2020, Guideline: Risk Assessments, Perth, Western Australia.*