



Application for Licence Amendment

Part V Division 3 of the *Environmental Protection Act 1986*

Licence Number	L9157/2018/1
Licence Holder	REMONDIS Australia Pty Ltd
ACN	002 429 781
File Number	DER2018/000853-1
Premises	REMONDIS Canning Vale Materials Recovery Facility 3 Madison Street CANNING VALE WA 6155 Lot 2 on Diagram 67441 As defined by the coordinates in Schedule 1 of the Revised Licence
Date of Report	28/07/2023
Proposed Decision	Revised licence granted

Adam Green
A/MANAGER, WASTE INDUSTRIES
REGULATORY SERVICES

an officer delegated under section 20 of the *Environmental Protection Act 1986* (WA)

Table of Contents

1. Decision summary	1
2. Scope of assessment	1
2.1 Regulatory framework	1
2.2 Application summary	1
3. Risk assessment	2
3.1 Source-pathways and receptors	2
3.1.1 Emissions and controls	2
3.1.2 Receptors	5
3.2 Risk ratings	6
3.3 Detailed risk assessment for noise	10
3.3.1 Noise emissions	10
4. Consultation	13
5. Conclusion	13
5.1 Summary of amendments	13
References	15
Appendix 2: Application validation summary	16

1. Decision summary

Licence L9157/2018/1 is held by REMONDIS Australia Pty Ltd for the REMONDIS Canning Vale Materials Recovery Facility (the Premises), located at 3 Madison Street, Canning Vale, WA 6155.

This Amendment Report documents the assessment of potential risks to the environment and public health from the proposed changes to the activities currently being carried out in the CDS Material recovery area 2. As a result of this assessment, Revised Licence L9157/2018/1 has been granted.

The Revised Licence issued as a result of this amendment consolidates and supersedes the existing Licence previously granted in relation to the Premises. The Revised Licence has been granted in a new format with existing conditions being transferred, but not reassessed, to the new format.

2. Scope of assessment

2.1 Regulatory framework

In completing the assessment documented in this Amendment Report, the department has considered and given due regard to its Regulatory Framework and relevant policy documents which are available at <https://dwer.wa.gov.au/regulatory-documents>.

2.2 Application summary

On 27 March 2023, the Licence Holder submitted an application to the department to amend Licence L9157/2018/1 under section 59 and 59B of the *Environmental Protection Act 1986* (EP Act). The following amendments are being sought:

- approve request to upgrade the facility for the receipt and processing of mixed CDS materials, and
- to remove activities associated with aluminium composite panel processing as this activity is no longer proposed.

Operational aspects

The application details that CDS material has been received, baled and stored onsite since October 2020. The material being received in this new activity is the same as the existing CDS material but it is mixed.

- Materials will be received on a daily basis in the undercover holding area which is located on a concrete floor at Area 2 on the site map;
- Mixed CDS will be loaded onto the first conveyor using a front-end loader;
- It will then progress through the system with different materials being removed from the recyclables stream in the process;
- Contaminants will be removed at the first sorting point and placed into a chute dropping into a bin which is then emptied into a larger bin to be disposed of at landfill;
- The mixed material will be carried via conveyor to the eddy current where the aluminium cans are thrown off into a bin;
- The remaining mixed materials will then be carried by conveyor to sorting platform. PET Colour, HDPE, LPB & Steel Cans are removed and placed into separate bins according to waste type;

- The remaining material will go through the trommel, where loose labels and lids are removed and deposited into a bin which is then emptied into a larger bin to be disposed of at landfill;
- Separated materials will be baled and stored in Area 4 for local or export sale.

This amendment is limited only to changes to Category 62 activities from the Existing Licence. No changes to the aspects of the existing Licence relating to Category 61 and 61A have been requested by the Licence Holder.

The throughput to Category 62 is proposed to decrease from 106,120 tonnes per annual period to 105,600 tonnes per annual period, with this application.

Table 1 below outlines the proposed changes to the existing Licence.

Table 1: Proposed design or throughput capacity changes

Category	Current throughput capacity	Proposed throughput capacity	Description of proposed amendment
62	106,120 tonnes	Proposed to be 105,600 tonnes per annual period	removal of 520 tonnes, relating to the aluminium composite panel activities.

3. Risk assessment

The department assesses the risks of emissions from prescribed premises and identifies the potential source, pathway and impact to receptors in accordance with the *Guideline: Risk assessments* (DWER 2020).

To establish a Risk Event there must be an emission, a receptor which may be exposed to that emission through an identified actual or likely pathway, and a potential adverse effect to the receptor from exposure to that emission.

3.1 Source-pathways and receptors

3.1.1 Emissions and controls

The key emissions and associated actual or likely pathway during premises operation which have been considered in this Amendment Report are detailed in

Table 22 below.

Table 22 also details the proposed control measures the Licence Holder has proposed to assist in controlling these emissions, where necessary.

Table 2: Licence Holder controls

Emission	Sources	Potential pathways	Proposed controls
Noise	Waste acceptance, handling, sorting, bailing and storage	Air/windborne pathway	<p>Location of CDS processing activities within an enclosed building.</p> <p>Premises will only be operational between “day-time” hours (7am to 7pm, Mon – Sat);</p> <p>Boundary noise assessment conducted 22nd October 2020 indicate maximum noise generated at site did not exceed 72dB threshold.</p> <p>The site has been operating for over 10 years as a cardboard, paper, plastics and steel receipt and processing facility with all materials processed and exported without any complaints from neighbouring businesses.</p>
Odour	Waste acceptance, handling, sorting, bailing and storage	Air/windborne pathway	Any odour causing materials are removed from the recyclables stream at the first sorting position in the facility and placed into a chute, dropping into a bin which is then emptied into a larger bin to be disposed of at landfill. If required, odorous material are removed from site on the same day.
Contaminated surface water – including fire wash water	Waste acceptance, handling, sorting, bailing and storage	Seepage, overland flow	<p>The MRF area is located on a concrete hardstand and collection sumps.</p> <p>Waste material received to site with potential for leachate segregated immediately to hook bins, material to be removed from site for landfilling.</p>
Smoke from fire		Air/wind dispersion	

3.1.2 Receptors

In accordance with the *Guideline: Risk assessments* (DWER 2020), the Delegated Officer has excluded employees, visitors and contractors of the Licence Holder’s from its assessment. Protection of these parties often involves different exposure risks and prevention strategies, and is provided for under other state legislation.

Table 3 below provides a summary of potential human and environmental receptors that may be impacted as a result of activities upon or emission and discharges from the prescribed premises (*Guideline: Environmental siting* (DWER 2020)).

Table 3: Sensitive human and environmental receptors and distance from prescribed activity

Human receptors	Distance from prescribed activity
<i>Thornlie (western residences of)</i>	<i>~850 m west of the Premises</i>
<i>Parkwood and Willetton (southern residences of)</i>	<i>~950 m north of the Premises</i>
<i>Canning Vale (northeast residences of)</i>	<i>~1,500 m east of the Premises</i>
Environmental receptors	Distance from prescribed activity
<i>Groundwater</i>	<i>Natural ground level is approximately 19 mAHD and the surface of the aquifer is approximately 15.8 mAHD, being 3.3 m below ground level¹</i>
<i>Geomorphic wetlands – Tom Bateman Reserve</i>	<i>Approximately 750 m northeast of the Premises</i>

3.2 Risk ratings

Risk ratings have been assessed in accordance with the *Guideline: Risk Assessments* (DWER 2020) for those emission sources which are proposed to change and takes into account potential source-pathway and receptor linkages as identified in Section 3.1. Where linkages are in-complete they have not been considered further in the risk assessment.

Where the Licence Holder has proposed mitigation measures/controls (as detailed in Section 3.1), these have been considered when determining the final risk rating. Where the Delegated Officer considers the Licence Holder's proposed controls to be critical to maintaining an acceptable level of risk, these will be incorporated into the licence as regulatory controls.

Additional regulatory controls may be imposed where the Licence Holder's controls are not deemed sufficient. Where this is the case the need for additional controls will be documented and justified in Table 4.

The Revised Licence L9157/2018/1 that accompanies this Amendment Report authorises emissions associated with the operation of the Premises.

The conditions in the Revised Licence have been determined in accordance with *Guidance Statement: Setting Conditions* (DER 2015).

Table 4. Risk assessment of potential emissions and discharges from the Premises during operation

Risk Event					Risk rating ¹ C = consequence L = likelihood	Licence Holder's controls sufficient?	Conditions ² of licence	Justification for additional regulatory controls
Source/Activities	Potential emission	Potential pathways and impact	Receptors	Licence Holder's controls				
Construction								
Installation of equipment located in the shed onsite relating to the processing of mixed CDS materials in undercover dome on a concrete pad (area 2). Forklift and Vehicle movements (reversing beepers), removal of infrastructure. Commissioning of new plant..	Noise	Air/windborne pathway causing impacts to health and amenity	Residences 815 m north-west and 720 m south-east. Adjacent industrial and commercial premises. Threatened fauna – nearest record is 740 m north-west.	N/A	C: Minor L: Possible Medium Risk	Y	Condition 1 stipulates infrastructure locations	The Delegated Officer considers that noise emissions can be sufficiently managed through the Environmental Protection (Noise) Regulations 1997.
Operation								
Waste acceptance, handling, sorting, bailing and storage of mixed CDS materials	Odour	Air/windborne pathway causing impacts to health and amenity	Residential premises located ~800 m from site	Refer to Section 3.1	C = Moderate L = Unlikely Medium Risk	Y	Condition 3 now condition 2 table 3 now 2 requires non-conforming odourous waste to be separated and removed from the site on the same	Non-conforming materials received on site have the potential to cause odours
	Noise	Air/windborne pathway causing impacts to health and amenity	Residential premises located ~800 m from site	Refer to Section 3.1	C = Moderate L = Unlikely Medium Risk	N	Condition 3 now condition 2 table 3 now 2 outlines the different waste types that can be accepted on site. Condition 4 now condition 3 requires unauthorised waste to be removed from the premises.	Boundary noise assessment conducted 22nd October 2020 confirms maximum noise generated at site did not exceed 72dB. Based on the nature of the operation (i.e. MRF operating within an industrial area) and the operating hours being day time only (7am – 7pm

Licence: L9157/2018/1

Risk Event					Risk rating ¹ C = consequence L = likelihood	Licence Holder's controls sufficient?	Conditions ² of licence	Justification for additional regulatory controls
Source/Activities	Potential emission	Potential pathways and impact	Receptors	Licence Holder's controls				
								<p>weekdays), DWER considers that low level impacts to amenity are possible, but unlikely, at a local scale, given there has been no public complaints received by DWER from existing operations and no objections being raised as part of the Applicant's consultation with neighbouring premises. It is assumed that the noise outputs from the proposed equipment will be equivalent to those currently in use.</p> <p>The Delegated Officer considers that noise emissions can be sufficiently managed through the Environmental Protection (Noise) Regulations 1997.</p> <p>SA2 relating to Noise verification required post installation of the processing equipment to ensure compliance with Noise Regulations has been removed from the licence.</p>
	Uncontrolled Fire (smoke)	Air/wind dispersion resulting in human health impacts (smoke inhalation, noxious particulates)	Residences 815 m north-west and 720 m south-east. Adjacent industrial and commercial premises	Refer to Section 3.1	C: Moderate L: Possible Medium Risk	Y	Condition 7 now condition 6 outlines minimum required fire controls. Condition 10 now condition 9, table 7 now 6- reworded, now requires the FMP to be updated regularly and maintained in good	N/A

Risk Event					Risk rating ¹	Licence Holder's controls sufficient?	Conditions ² of licence	Justification for additional regulatory controls
Source/Activities	Potential emission	Potential pathways and impact	Receptors	Licence Holder's controls	C = consequence L = likelihood			
							operational condition.	
	Firefighting washwaters and contaminated runoff	Overland flow, stormwater network and infiltration to soil resulting in potential impacts to groundwater users and impacts on the biological diversity and ecosystem function of wetlands	Groundwater and nearby wetlands	Refer to Section 3.1	C = Slight L = Unlikely Low Risk	Y		N/A

Note 1: Consequence ratings, likelihood ratings and risk descriptions are detailed in the *Guideline: Risk assessments* (DWER 2020).

Note 2: Proposed Licence Holder's controls are depicted by standard text. **Bold and underline text** depicts additional regulatory controls imposed by department.

3.3 Detailed risk assessment for noise

3.3.1 Noise emissions

A decision to grant an amendment to L9157/2018/1 was issued in June 2020 to allow flexibility to upgrade facility to the Container Deposit Scheme (CDS). Condition 9 Specified Action 2 (SA2) of the amended licence required the licence holder to undertake a noise monitoring survey to demonstrate the noise levels from operations comply with *Environmental Protection (Noise) Regulations 1997* (Noise Regulations) at the Premises boundary. The licence holder submitted Herring Storer Acoustics (2020) *Remondis Canning Vale Boundary Noise Survey* in October 2020. The noise report was submitted as required by Condition 9 SA2 of the licence.

The Herring Storer Acoustic (2020) report was prepared to demonstrate noise levels at the Premises boundary and provide reference noise level measurements for comparison to future assessments. Noise monitoring was conducted at the perimeter Premises boundary on the 19 October 2020. The plant was operating under normal conditions. Whilst carrying out noise measurements, observations were made as to the source of the noise, being either generated by the site operations or by other sources in the surrounding area (Herring Storer Acoustics 2020). Table 5 provides a summary of measured noise levels.

Table 5: Measured noise levels (Herring Storer Acoustics 2020)

Location	Measured LA10 Noise Level	Comments
1	61	Remondis operations, forklifts, loaders operating. Barrier to neighbour.
2	56	Remondis operations, forklifts, loaders operating. Barrier to neighbour
3	51	Remondis operations, barriered by office, some influence from adjacent industrial premises. No barrier to neighbour.
4	52	Remondis operations, barriered by office, some influence from adjacent industrial premises. No barrier to neighbour.
5	64	Remondis operations, bailers, roller door open, barrier to neighbour.
6	65	Remondis operations, bailers, loader, trucks idling on weighbridge, limited barrier to neighbour.
7	72(77) *	Remondis operations, dominated by bailing operations. No barrier to neighbour. calculated at industrial premises across road at 54 (59)* dB(A).

*Bracketed number for tonality

Herring Storer Acoustic's (2020) noise report included the measurement of sound pressure levels of mobile and fixed equipment; measuring the noise emission levels at the boundary of the subject lot and assessing the compliance with the Noise Regulations. The report indicated that the facility complies with the Noise Regulations. However, the report also noted a potential for non-compliance where product is dropped into the baler, should this emission be found to be tonal and impulsive (DWER 2022). The report does not formally assess whether tonality and impulsiveness are present. As such, there is uncertainty as to whether the projected noise emissions comply with the Noise Regulations (DWER 2022).

To mitigate the noise emission risks outlined above condition 9 (condition 10 after the last amendment in relation to the inclusion of aluminium composite panel processing which required changes to infrastructure and equipment) SA2 was retained on the licence. The licence holder was required to submit an updated noise assessment report that considered the layout and equipment proposed under the L9157/2020/1 licence amendment, comprising of noise

modelling, and assessment against the L_{A1} , L_{A10} and L_{Amax} assigned noise levels (DWER 2022).

Although the application confirmed that noise from the aluminium composite panel processing was expected to be less than 85 dB(A), no documentation from the manufacturer was provided to support the statement. It was also noted that the processing of ACP was not assessed in the Herring Storer Acoustic (2020) report given it predated the licence amendment application.

The Work Health Professionals (2022) report was submitted as required by Condition 10 SA2 of the licence. Work Health Professionals' consultants hold current registration through the Department of Mines Industry Regulation and Safety (DMIRS) as qualified and experienced Noise Officers.

The noise survey revealed that activities relating to the processing of ACP presents a significant noise source with exposure of more than 105dB(A) during an eight-hour day. The noise generated from the ACP process extended into other work areas within the premises as represented in the noise map below (figure 1). The assigned level for industrial and utility premises (other than Kwinana Industrial Area) is 90dB(A). The noise map shows that levels at the premises boundary did not exceed 90dB(A).

Since the operation of the ACP in area 2 presented a significant noise hazard for workers, the equipment that had been installed for the processing of ACP has all been decommissioned and removed from the area and in its place equipment for the sorting of mixed CDS materials will be reinstalled.

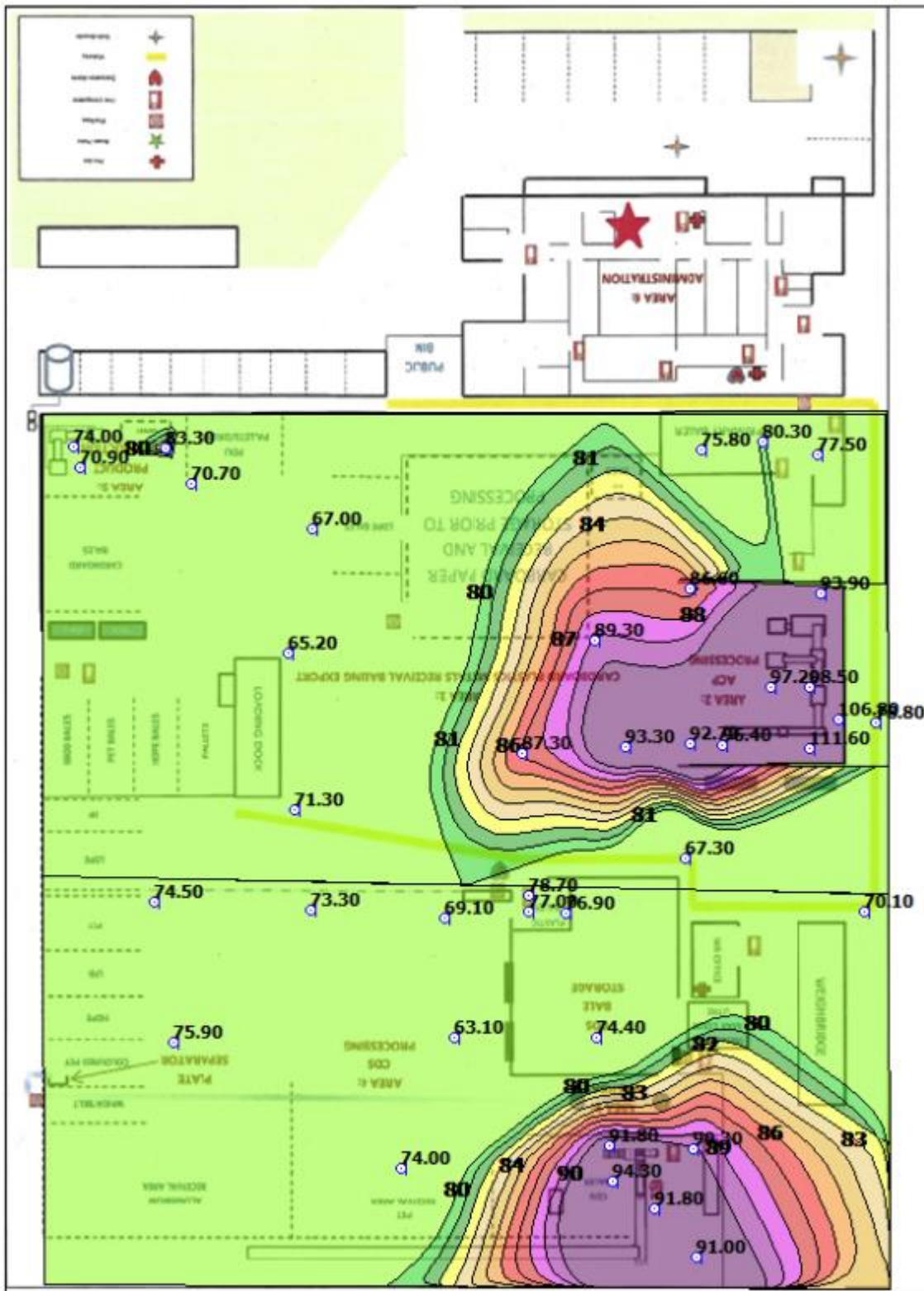


Figure 1: Noise dispersion map

4. Consultation

Table 6 provides a summary of the consultation undertaken by the department.

Table 6: Consultation

Consultation method	Comments received	Department response
Application advertised on the department's website (09/06/2023)	None received	N/A
Local Government Authority advised of proposal (09/06/2023)	None received	N/A
Licence Holder was provided with draft amendment on 06/07/2023	The Licence Holder advised on 21 July 2023 that they have no further comments on the draft documents and waived the remaining consultation period.	Revised Licence will be granted

5. Conclusion

Based on the assessment in this Amendment Report, the Delegated Officer has determined that a Revised Licence will be granted, subject to conditions commensurate with the determined controls and necessary for administration and reporting requirements.

5.1 Summary of amendments

Table 7 provides a summary of the proposed amendments and will act as record of implemented changes. All proposed changes have been incorporated into the Revised Licence as part of the amendment process.

Table 7: Summary of licence amendments

Condition no.	Proposed amendments
Condition 1 Table 1	Inclusion of new infrastructure and equipment condition relating to the processing of mixed CDS materials – Area 2. infrastructure and equipment condition relating to the processing ACP removed – Area 2.
Condition 2 Table 2	Emissions-Redundant condition. Revised to current licensing format.
Condition 3 Table 3	New numbering, amended to condition 2 table 2. ACP processing and quantity limit relating (520 tonnes per year) removed.
Condition 4	New numbering, condition 3 now.
Condition 5 Table 4	New numbering, amended to condition 4 table 3. Processing of ACP removed
Condition 6 Table 5	New numbering, amended to condition 5 table 4.

Condition 7	New numbering, amended to condition 6.
Condition 8	New numbering, amended to condition 7.
Condition 9	New numbering, amended to condition 8. Typographical error noted, liquid paper board (LPB) added to the Inert Waste list. ACP (aluminium, PE) removed
Condition 10 Table 7	New numbering, amended to condition 9 table 6. SA1 – reworded. SA2 – removed.
Condition 11	New numbering, amended to condition 10.
Condition 12	New numbering, amended to condition 11.
Condition 13	New numbering, amended to condition 12.
Condition 14	New numbering, amended to condition 13.
Table 8	New numbering, amended to condition table 7. Definitions table updated.

References

1. Department of Environment Regulation (DER) 2015, *Guidance Statement: Setting Conditions*, Perth, Western Australia.
2. Department of Water and Environmental Regulation (DWER) 2020, *Guideline: Environmental Siting*, Perth, Western Australia.
3. DWER 2020, *Guideline: Risk Assessments*, Perth, Western Australia.
4. DWER 2022, *Memorandum: Remondis Australia Pty Ltd (Remondis) – L9157/2020/1 – Licence amendment application for the proposed inclusion of Aluminium Composite Panel reprocessing at Lot 2 on Diagram 67441 (3 Madison Street), Canning Vale - DWER technical noise review (DER2018/000853-1)*, dated 19 January 2022.
5. Herring Storer Acoustic 2020, *Remondis Canning Vale Boundary Noise Survey Measured: October 2020* prepared by Herring Storer Acoustics for Remondis.
6. Work Health Professionals 2022, *Remondis Canning Vale Resource Recovery Facility Noise Survey Measured: December 2022* prepared by Work Health Professionals for Remondis.

Appendix 2: Application validation summary

SECTION 1: APPLICATION SUMMARY (as updated from validation checklist)				
Application type				
Works approval	<input type="checkbox"/>			
Licence	<input type="checkbox"/>	Relevant works approval number:		None <input type="checkbox"/>
		Has the works approval been complied with?		Yes <input type="checkbox"/> No <input type="checkbox"/>
		Has time limited operations under the works approval demonstrated acceptable operations?		Yes <input type="checkbox"/> No <input type="checkbox"/> N/A <input type="checkbox"/>
		Environmental Compliance Report / Critical Containment Infrastructure Report submitted?		Yes <input type="checkbox"/> No <input type="checkbox"/>
		Date Report received:		
Renewal	<input type="checkbox"/>	Current licence number:		
Amendment to works approval	<input type="checkbox"/>	Current works approval number:		
Amendment to licence	<input checked="" type="checkbox"/>	Current licence number:	L9157/2018/1	
		Relevant works approval number:	N/A	<input checked="" type="checkbox"/>
Registration	<input type="checkbox"/>	Current works approval number:	None	<input type="checkbox"/>
Date application received		27 March 2023		
Applicant and Premises details				
Applicant name/s (full legal name/s)		Remondis Australia Pty Ltd		
Premises name		Remondis Australia Pty Ltd Canning Vale Materials Recovery Facility (MRF)		
Premises location		<ul style="list-style-type: none"> - 2 Madison Street Canning Vale, WA, 6155 - Lot 2 on Diagram 67441 		
Local Government Authority		City of Canning		
Application documents				
HPCM file reference number:		<ul style="list-style-type: none"> - Application submission number: DWERDT55846 - Licence folder number: DER2018/000853-1 		

<p>Key application documents (additional to application form):</p>	<ul style="list-style-type: none"> • Attachment 2 – Premises Map • Attachment 3A – Proposed activities • Attachment 6A – Emissions and discharges • Attachment 6B – Waste acceptance table • Attachment 7 – Siting and location.
<p>Scope of application/assessment</p>	
<p>Summary of proposed activities or changes to existing operations.</p>	<p><u>Proposed additional activities:</u></p> <p>Area 2: CDS Material Recovery Facility (MRF)</p> <p>The application proposes to amend the licence to include the receipt and processing of mixed CDS materials. Site changes include:</p> <ul style="list-style-type: none"> • Installation/repositioning of processing equipment's already onsite to separate CDS materials. <p>CDS material has been received, baled and stored onsite since October 2020. The material being received in this new activity is the same as the existing CDS material, but it is mixed. The materials received daily will be stored in the undercover area (area 2).</p> <p>Key CDS infrastructure proposed to include:</p> <ul style="list-style-type: none"> - 2 sorting platforms, 4 conveyors, 1 eddy current and 1 trommel. - The site also utilises 2 front end loaders, 1 telehandler, 4 forklifts which have shared responsibility for processing in all areas of the site. <p><u>ACP activities to be removed:</u></p> <ul style="list-style-type: none"> - equipment's relating to Aluminium Composite Processing (ACP) activities carried out in the same area will be/has been decommissioned and removed. - Key ACP infrastructure includes: - 3 conveyors, 1 shredder, 1 magnet, 1 crusher, 1 electrostatic separator, 1 dust removal system.

Category number/s (activities that cause the premises to become prescribed premises)

Table 1: Prescribed premises categories

Prescribed premises category and description	Production or design capacity	Proposed changes to the production or design capacity (amendments only)
Category 62: Solid waste depot Solid waste depot: premises on which waste is stored, or sorted, pending final disposal or-reuse.	Proposed – No amendments or new activities proposed. Assessed - 113,400 tonnes per annual period.	No amendments or new activities proposed.
Category 61: Liquid waste facility Liquid waste facility: premises on which liquid waste produced on other premises (other than sewerage waste) is stored, reprocessed, treated or irrigated.	Proposed – No amendments or new activities proposed. Assessed - 30,000 tonnes per annual period	No amendments or new activities proposed.
Category 61A: Solid waste facility Solid waste facility: premises (other than premises within Category 67A) on which solid waste is produced on other premises is stored, reprocessed, treated, or discharged onto land.	The amendment is for Category 61A activities only. Proposed – for new activities as specified in the application. The application form states: -2600 tonnes / annum (50 tonnes / week). Assessed – 6,000 tonnes per annual period.	The amendment is for the proposed acceptance and processing of approximately 50 tonnes of mixed CDS materials per week. The proposed amendment will not require an increase to the assessed premises production and design capacity under Category 61A (6000 tonnes per annual period).

Legislative context and other approvals

Has the applicant referred, or do they intend to refer, their proposal to the EPA under Part IV of the EP Act as a significant proposal?	Yes <input type="checkbox"/> No <input checked="" type="checkbox"/>	Referral decision No: Managed under Part V <input type="checkbox"/> Assessed under Part IV <input type="checkbox"/>
Does the applicant hold any existing Part IV Ministerial Statements relevant to the application?	Yes <input type="checkbox"/> No <input checked="" type="checkbox"/>	Ministerial statement No: EPA Report No:
Has the proposal been referred and/or assessed under the EPBC Act?	Yes <input type="checkbox"/> No <input checked="" type="checkbox"/>	Reference No:
Has the applicant demonstrated occupancy (proof of occupier status)?	Yes <input checked="" type="checkbox"/> No <input type="checkbox"/>	Certificate of title <input type="checkbox"/> General lease <input type="checkbox"/> Expiry: Mining lease / tenement <input type="checkbox"/>

		Expiry: Other evidence <input type="checkbox"/> Expiry:
Has the applicant obtained all relevant planning approvals?	Yes <input type="checkbox"/> No <input type="checkbox"/> N/A <input checked="" type="checkbox"/>	The proposed amendment for ACP processing is not likely to require additional planning approvals.
Has the applicant applied for, or have an existing EP Act clearing permit in relation to this proposal?	Yes <input type="checkbox"/> No <input checked="" type="checkbox"/>	No clearing is proposed.
Has the applicant applied for, or have an existing CAWS Act clearing licence in relation to this proposal?	Yes <input type="checkbox"/> No <input checked="" type="checkbox"/>	No clearing is proposed.
Has the applicant applied for, or have an existing RIWI Act licence or permit in relation to this proposal?	Yes <input type="checkbox"/> No <input checked="" type="checkbox"/>	Licence / permit not required.
Does the proposal involve a discharge of waste into a designated area (as defined in section 57 of the EP Act)?	Yes <input type="checkbox"/> No <input checked="" type="checkbox"/>	Name: Perth Groundwater Area Type: As proclaimed as 'to be developed' under the RIWI Act. No Discharges to the groundwater expected as part of the proposed amendment activity. Has Regulatory Services (Water) been consulted? Yes <input type="checkbox"/> No <input checked="" type="checkbox"/> N/A <input type="checkbox"/> Regional office: Swan Avon
Is the Premises situated in a Public Drinking Water Source Area (PDWSA)?	Yes <input type="checkbox"/> No <input checked="" type="checkbox"/>	N/A
Is the Premises subject to any other Acts or subsidiary regulations (e.g. <i>Dangerous Goods Safety Act 2004, Environmental Protection (Controlled Waste) Regulations 2004, State Agreement Act xxxx</i>)	Yes <input type="checkbox"/> No <input checked="" type="checkbox"/>	N/A
Is the Premises within an Environmental Protection Policy (EPP) Area?	Yes <input type="checkbox"/> No <input checked="" type="checkbox"/>	N/A

Is the Premises subject to any EPP requirements?	Yes <input type="checkbox"/> No <input checked="" type="checkbox"/>	N/A
Is the Premises a known or suspected contaminated site under the <i>Contaminated Sites Act 2003</i> ?	Yes <input type="checkbox"/> No <input checked="" type="checkbox"/>	N/A