



## Application for Works Approval

### Part V Division 3 of the *Environmental Protection Act 1986*

---

**Works Approval Number** W2914/2025/1

**Applicant** WA Limestone Contracting Pty Ltd

**ACN** 604 937 715

**File number** APP-0026183

**Premises** Exmouth Limestone Mine  
Mining Lease M08/145  
Minilya-Exmouth Road  
EXMOUTH WA 6707

As defined by the premises map (Figure 1) attached to the issued works approval

**Date of report** 01 October 2025 (**FINAL**)

**Decision** Works approval granted

## Table of Contents

<b>1. Decision summary .....</b>	<b>1</b>
<b>2. Scope of assessment .....</b>	<b>1</b>
2.1 Regulatory framework .....	1
2.2 Background of premises .....	1
2.3 Application summary and overview of premises .....	1
2.4 Part IV of the EP Act.....	3
<b>3. Risk assessment.....</b>	<b>4</b>
3.1 Source-pathways and receptors .....	4
3.1.1 Emissions and controls .....	4
3.1.2 Receptors.....	5
3.2 Risk ratings.....	9
<b>4. Consultation .....</b>	<b>12</b>
<b>5. Conclusion .....</b>	<b>12</b>
<b>References .....</b>	<b>12</b>
<b>Appendix 1: Consultation.....</b>	<b>13</b>
 Table 1: Proposed applicant controls .....	 4
Table 2: Sensitive human and environmental receptors and distance from prescribed activity .	6
Table 3: Risk assessment of potential emissions and discharges from the premises during construction and operation .....	10
 Figure 1: Location of crushing and screening plant within M08/145.....	 2
Figure 2: Indigenous Heritage sites in proximity to the prescribed premises .....	8

## 1. Decision summary

This decision report documents the assessment of potential risks to the environment and public health from emissions and discharges during the construction and operation of the premises. As a result of this assessment, works approval W2914/2025/1 has been granted.

## 2. Scope of assessment

### 2.1 Regulatory framework

In completing the assessment documented in this decision report, the Department of Water and Environmental Regulation (the department; DWER) has considered and given due regard to its regulatory framework and relevant policy documents which are available at <https://dwer.wa.gov.au/regulatory-documents..>

### 2.2 Background of premises

Exmouth Limestone Pty Ltd (Exmouth Limestone) has previously undertaken mining, crushing and screening at the Exmouth Limestone Mine (premises) on mining lease M08/145, which is located approximately 7 km north-west of the town of Exmouth.

Mining, and crushing and screening under works approvals and licences commenced in July 1998. At the completion of the initial mining campaign, mining activities ceased and the site was placed in care and maintenance. All major plant was removed.

The premises has been in care and maintenance since February 2007.

Exmouth Limestone considered reopening the mine so has submitted the following under Part V, Division 3 of the *Environmental Protection Act 1986* (EP Act):

- In 2010, a new works approval application for the installation of a crusher and screener. Works approval W4779/2010/1 was issued on 23 December 2010 and expired on 26 December 2014 as mining was still on hold and the crusher and screener had not been installed.
- In 2015, a new works approval application which was unchanged from W4779/2010/1. W5844/2015/1 was issued on 31 December 2015 and expired on 03 January 2023.

### 2.3 Application summary and overview of premises

On 03 September 2024, WA Limestone Contracting Pty Ltd (the applicant) submitted an application for a works approval to the department under section 54 of the EP Act.

The application is to undertake construction works and time-limited operations at the premises.

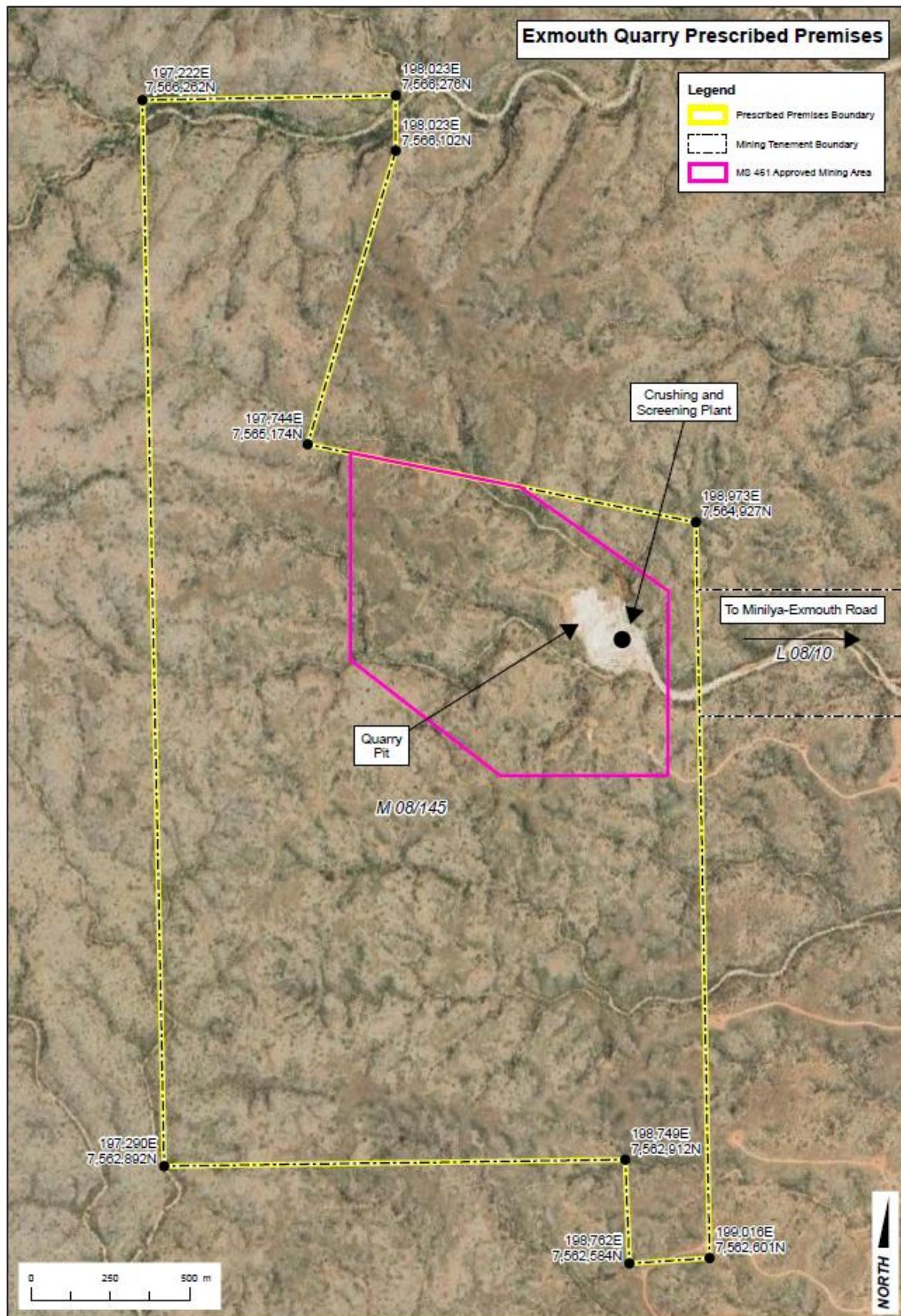
M08/145 is held by Exmouth Limestone, the applicant has obtained a Letter of Operational Control from Exmouth Limestone to be able to operate within the premises.

The premises relates to Category 12: *Screening etc. of material* as defined in Schedule 1 of the *Environmental Protection Regulations 1987* (EP Regulations).

The infrastructure and equipment relating to the premises category and any associated activities which the department has considered in line with *Guideline: Risk Assessments* (DWER 2020) are outlined in works approval W2914/2025/1.

The activity involves the installation of a mobile crushing and screening plant for the production of limestone aggregates within the approved mining area as shown in Figure 1. With a combined throughput of 150 tonnes per hour, the applicant intends to process up to 500,000 tonnes per year of limestone. The applicant intends to repair the access road and existing processing area pad in the floor of the quarry pit, as well as organising existing stockpiled material within the

site.



**Figure 1: Location of crushing and screening plant within M08/145**



## 2.4 Part IV of the EP Act

The Exmouth Limestone Mine was referred to the Environmental Protection Authority (EPA) by Whitecrest Enterprises Pty Ltd (the original proponent) on 06 November 1997. The proposal was to develop a limestone mine and quicklime plant and to transport quicklime from the mine site, through the town of Exmouth, to Port Murat for loading onto ships, using existing jetty infrastructure.

The original proponent was authorised to develop the premises under Ministerial Statement (MS) 0461, which was published on 6 November 1997.

Conditions within MS 0461 relevant to this assessment include:

- Condition 4 requires the development of an Environmental Management Plan (or series of) which details the procedures and management provisions for meeting the environmental commitments and objectives for the mine site for the following:
  - Significant caves;
  - Subterranean fauna;
  - Marine monitoring and reporting;
  - Product containment measures and contingencies for spillage;
  - Protection of fauna and flora, including fire and weed management;
  - Greenhouse gas emissions (quicklime plant);
  - Surface water monitoring and management;
  - Dust;
  - Noise;
  - Rehabilitation of disturbed areas; and
  - Social impacts.
- Condition 6 – Subterranean Fauna; and
- Condition 8 – Decommissioning.

An Environmental and Mining Management Plan (EMMP 1998) was prepared to the satisfaction of the EPA in accordance with MS 0461 condition 4-1.

Environmental Management Commitments (715) are outlined within MS 0461 for the following:

- Pre-construction Phase (Commitments 1 to 9);
- Construction Phase (Commitments 10 to 18);
- Operational Phase (Commitments 19 to 41);
- Noise, Dust, Emissions and Waste Products (Commitments 42 to 50);
- Site Management (Commitments 51 to 53); and
- Social Issues (Commitments 54 to 56).

The applicant has confirmed that they will adhere to all environmental management commitments outlined in MS 0461 and the *EMMP 1998* (WA Limestone 2025).

Requirements of MS 0461 have not been re-assessed in this decision report.

### 3. Risk assessment

The department assesses the risks of emissions from prescribed premises and identifies the potential source, pathway and impact to receptors in accordance with the *Guideline: Risk Assessments* (DWER 2020).

To establish a risk event there must be an emission, a receptor which may be exposed to that emission through an identified actual or likely pathway, and a potential adverse effect to the receptor from exposure to that emission.

#### 3.1 Source-pathways and receptors

##### 3.1.1 Emissions and controls

The key emissions and associated actual or likely pathway during premises construction and time-limited operations which have been considered in this decision report are detailed in Table 1 below. Table 1 also details the control measures the applicant has proposed to assist in controlling these emissions, where necessary.

**Table 1: Proposed applicant controls**

Emission	Sources	Potential pathways	Proposed controls
<b>Construction</b>			
Dust	Placement of mobile crushing screening plant and associated equipment including vehicle movements (reversing beepers)	Air / windborne pathway	Water carts will be available onsite at all times for dust suppression.
<b>Operation</b>			
Dust	Screening, crushing, unloading, loading and storage of material Vehicle movements	Air / windborne pathway	<ul style="list-style-type: none"> <li>All permanent roads and hardstands sheeted with crushed limestone and clayey fines and kept watered down during mining operation and truck movements.</li> <li>Water carts available onsite at all times for dust suppression. Water used for dust suppression is freshwater.</li> <li>Visual monitoring of dust generation undertaken continuously by site personnel during operating hours.</li> </ul>
Noise			<ul style="list-style-type: none"> <li>Maintain a Register of Complaints and respond appropriately.</li> <li>Comply with the <i>Environmental Protection (Noise) Regulations 1997</i>.</li> <li>Reducing sound levels on specific noise making machinery by servicing, repairing,</li> </ul>

Emission	Sources	Potential pathways	Proposed controls
			insulating or withdrawing, as necessary.
Sediment laden stormwater		Overland runoff	<ul style="list-style-type: none"> <li><i>EMMP 1998</i> states floodway crossings of the Stoney Creek haul road are designed as sediment traps. These will be inspected after major flood events and cleared of silt build-up as necessary.</li> <li>Surface water monitoring conducted in creeks near the mine area after a significant flood event. This will comprise a visual inspection and water testing, where appropriate (hydrocarbon contamination and/or high sediment load evident).</li> <li>Surface flows diverted around the immediate mining site by bunds.</li> </ul>
<b>Miscellaneous activities</b>			
Hydrocarbon spills or leaks	General mining activities	Discharges to land	<ul style="list-style-type: none"> <li>Refuelling in the mine area from a mobile tanker is to take place within a bunded and high-density polyethylene (HDPE) lined fuel-handling area.</li> <li>Drill rigs or equipment that cannot be re-fuelled in the designated bund area, to be refuelled using a truck mounted tanker fitted with a shut-off valve and continuously manned during operation.</li> <li>A portable bund will also be used.</li> <li>Any spillage of fuel or other contaminants cleaned up immediately.</li> <li>The bund area is regularly inspected for spills and general condition.</li> </ul>

### 3.1.2 Receptors

In accordance with the *Guideline: Risk Assessment* (DWER 2020), the Delegated Officer has excluded the applicant's employees, visitors, and contractors from its assessment. Protection of these parties often involves different exposure risks and prevention strategies and is provided for under other state legislation.

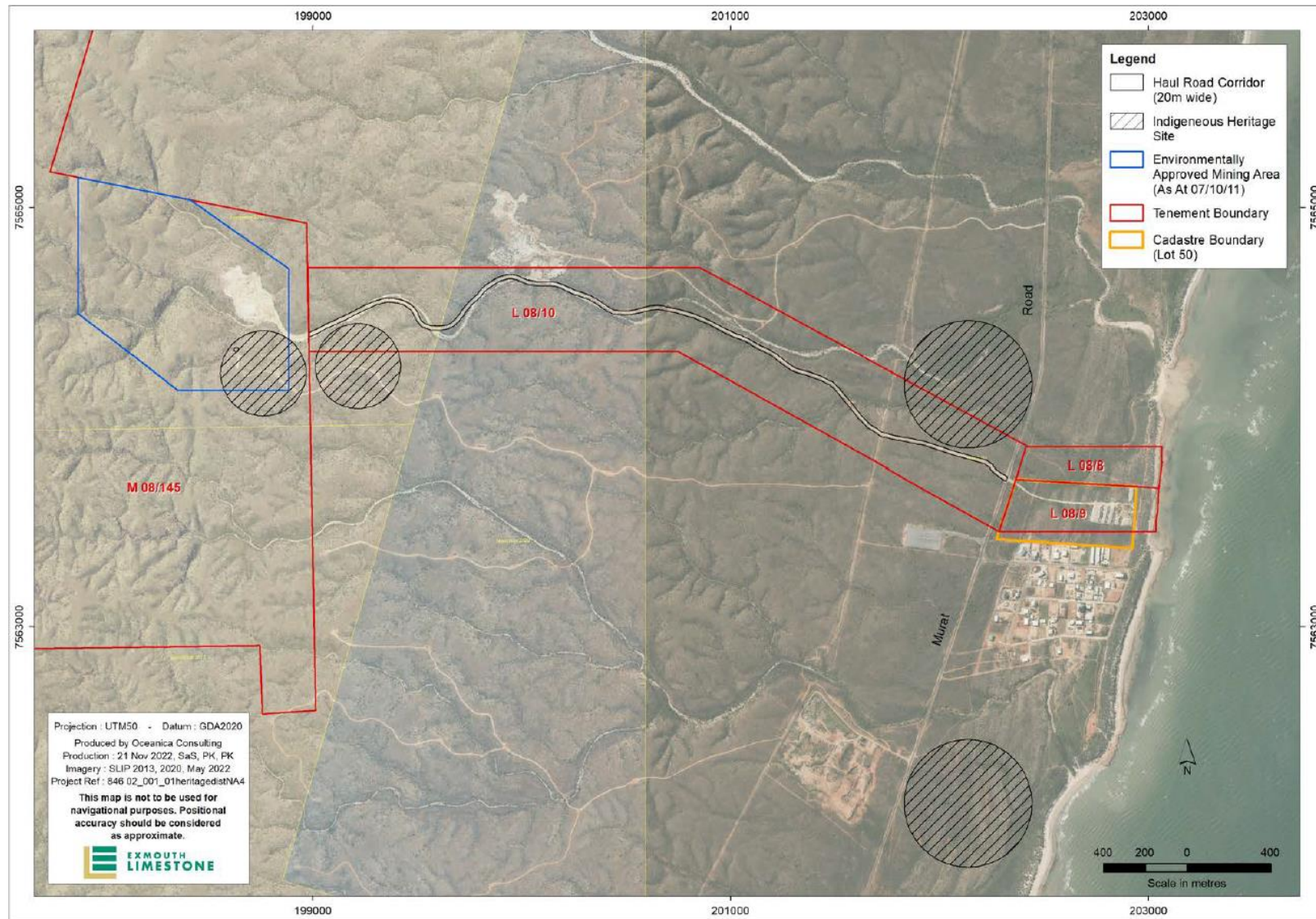
Table 2 and Figure 2 below provides a summary of potential human and environmental receptors that may be impacted as a result of activities upon or emission and discharges from the prescribed premises (*Guideline: Environmental Siting* (DWER 2020)).

**Table 2: Sensitive human and environmental receptors and distance from prescribed activity**

Human receptors	Distance from activity / prescribed premises
Residential/Commercial Premises	A residential/commercial district is located approximately 3.5 km south-east of the prescribed activity area.
Environmental receptors	Distance from activity / prescribed premises
<u>Priority Flora</u> <i>Acacia alexandri</i> (Priority 3) native to the Cape Range Peninsula <b>Clearing and management of Flora is managed under EMMP 1998</b>	It is located within the prescribed premises and is 600 m west of the prescribed activity.
<u>Threatened Fauna</u> <i>Bamazomus subsolanus</i> (Endangered) is cave dwelling pseudoscorpion native to the Cape Range Peninsula <i>Milyeringa veritas</i> (Vulnerable) is endemic to groundwater and anchialine systems in caves in the Cape Range Peninsula A Significant Caves Protocol has been established in the event that karst features are encountered by the project, and further assessments are to be undertaken should mining progress beyond the current approved area (WA Limestone 2025). <b>Managed under MS 0461</b>	<p>Located within the prescribed premises and is within 200 m surrounding the prescribed activity.</p> <p>Located within surface water line 300 m south of the prescribed activity.</p>
Public Drinking Water Source Area (PDWSA) and Groundwater <b>MS 0461 Commitment 22 states no mining shall be carried out within 400 metres of any existing or proposed bore or well or associated equipment located on the Exmouth Water Reserve, without the prior written permission of the Water Corporation</b> <b>MS 0461 Commitment 23 states no mining shall be carried out within 50 m of the groundwater table, without prior written permission</b>	<p>The premises is wholly contained within the Priority 1 area of the Exmouth Water Reserve PDWSA.</p> <p>The premises is within the wellhead protection zone (WHPZ) of a production bore operated by the Water Corporation.</p>
Surface water lines <b>MS 0461 Commitment 26 states no activity shall be undertaken that will adversely</b>	<p>Mowbowra Creek is 2 km north of the prescribed activity area.</p> <p>Stoney Creek is a creek that runs through the prescribed activity area.</p>



<b>affect groundwater or surface water quality or quantity</b>	Seasonal creek 300 m south of the prescribed activity.
<b>Cultural receptors</b>	<b>Distance from activity / prescribed premises</b>
Aboriginal heritage site	<p>Artefacts / Scatter:</p> <ul style="list-style-type: none"> <li>• ACH-00021383 (Mowbowra Creek Isolated Finds) 150 m south-west of prescribed activity.</li> <li>• ACH-00000562 (MOWBOWRA CREEK 02) 300 m south-east of prescribed activity.</li> <li>• ACH-00000561 (MOWBOWRA CREEK 01) 100 m south of prescribed activity.</li> <li>• Mowbara Pool – (Site ID 6117) 3 km from prescribed activity.</li> </ul>
Ningaloo Conservation Estate	The Ningaloo Conservation Estate is 7 km south of the prescribed activity area.



**Figure 2: Indigenous Heritage sites in proximity to the prescribed premises**

## 3.2 Risk ratings

Risk ratings have been assessed in accordance with the *Guideline: Risk Assessments* (DWER 2020) for each identified emission source and takes into account potential source-pathway and receptor linkages as identified in Section 3.1. Where linkages are in-complete they have not been considered further in the risk assessment.

Where the applicant has proposed mitigation measures/controls (as detailed in Section 3.1), these have been considered when determining the final risk rating. Where the delegated officer considers the applicant's proposed controls to be critical to maintaining an acceptable level of risk, these will be incorporated into the works approval as regulatory controls.

Additional regulatory controls may be imposed where the applicant's controls are not deemed sufficient. Where this is the case the need for additional controls will be documented and justified in Table 3.

Works approval W2914/2025/1 that accompanies this decision report authorises construction and time-limited operations. The conditions in the issued works approval, as outlined in Table 3 have been determined in accordance with *Guidance Statement: Setting Conditions* (DER 2015).

A licence is required following the time-limited operational phase authorised under the works approval to authorise emissions associated with the operation of the premises i.e. crushing and screening activities. A risk assessment for the operational phase has been included in this decision report, however licence conditions will not be finalised until the department assesses the licence application.

**Table 3: Risk assessment of potential emissions and discharges from the premises during construction and operation**

Risk events					Risk rating <sup>1</sup> C = consequence L = likelihood	Applicant controls sufficient?	Conditions <sup>2</sup> of works approval	Justification for additional regulatory controls / DWER comments
Sources / activities	Potential emission	Potential pathways and impact	Receptors	Applicant controls				
Construction								
Placement of mobile crushing screening plant and associated equipment including vehicle movements (reversing beepers)	Dust	<b>Pathway:</b> Air/windborne pathway  <b>Impact:</b> smothering of native vegetation inhibiting photosynthesis/ growth cycle  Reduction in amenity and health of local fauna	Threatened Fauna Priority Flora	Refer to Section 3.1	C = Minor L = Possible  <b>Medium Risk</b>	Y	<b><u>Condition 2 – Dust management requirements during construction</u></b>	Condition 2 has been applied to ensure dust lift-off on the premises is managed during construction activities.  MS 0461 Commitments 12 and 14 and <i>EMMP 1998</i> also applies in relation to dust emissions.  General provisions of the EP Act also apply.
Operation								
Screening, crushing, unloading, loading and storage of material  Vehicle movements	Dust	<b>Pathway:</b> Air/windborne pathway  <b>Impact:</b> smothering of native vegetation inhibiting photosynthesis/ growth cycle  Reduction in amenity and health of local fauna	Threatened Fauna Priority Flora	Refer to Section 3.1	C = Moderate L = Possible  <b>Medium Risk</b>	Y	Condition 1 – infrastructure and equipment requirements  Condition 7 - operational requirements for infrastructure and equipment	MS 0461 Commitments 42, 43, 44, 45 and 50 and <i>EMMP 1998</i> applies in relation to dust emissions.  General provisions of the EP Act also apply.
	Noise	<b>Pathway:</b> Air/windborne and vibrations	Threatened Fauna	Refer to Section 3.1	C = Minor L = Rare	Y	N/A	<i>Environmental Protection (Noise) Regulations 1997</i> apply.  MS 0461 Commitments 46 and 47 and

Works approval: W2914/2025/1

Risk events					Risk rating <sup>1</sup> C = consequence L = likelihood	Applicant controls sufficient?	Conditions <sup>2</sup> of works approval	Justification for additional regulatory controls / DWER comments
Sources / activities	Potential emission	Potential pathways and impact	Receptors	Applicant controls				
		<b>Impact:</b> Reduction in amenity and health of local fauna			Low Risk			EMMP 1998 apply for noise emissions.
	Sediment laden stormwater	<b>Pathway:</b> Overland runoff  <b>Impact:</b> Ecosystem disturbance or impact to surface water quality	Surface water lines  Threatened Fauna	Refer to Section 3.1	C = Moderate L = Unlikely <b>Medium Risk</b>	Y	Condition 7 - operational requirements for infrastructure and equipment	MS 0461 Commitments 24, 25, 26, 27 and 28 and EMMP 1998 for surface water management apply.
<b>Miscellaneous activities</b>								
General mining activities	Hydrocarbon spills or leaks	<b>Pathway:</b> spills or leaks from pipeline  <b>Impact:</b> adverse impacts to soils, native vegetation, surface water and/or groundwater quality	Surface water lines  Threatened Fauna  Groundwater / Public Drinking Reserve  Priority Flora	Refer to Section 3.1	C = Moderate L = Possible <b>Medium Risk</b>	Y	N/A	Unintended discharge of hydrocarbons and other harmful materials into the environment is regulated under the <i>Environmental Protection (Unauthorised Discharges) Regulations 2004</i> .  MS 0461 Commitments 29, 30, 31, 32, 33, 34, 44 and 48 and EMMP 1998 also apply for management of hydrocarbons on site.  Water Quality Protection Note No. 56 <i>Tanks for fuel and chemical storage near sensitive water resources</i> (DWER 2018) applies.

Note 1: Consequence ratings, likelihood ratings and risk descriptions are detailed in the *Guideline: Risk Assessments* (DWER 2020).

Note 2: Proposed applicant controls are depicted by standard text. **Bold and underline text** depicts additional regulatory controls imposed by department.



## 4. Consultation

Appendix 1 provides a summary of the consultation undertaken by the department.

## 5. Conclusion

Based on the assessment in this decision report, the delegated officer has determined that a works approval will be granted, subject to conditions commensurate with the determined controls and necessary for administration and reporting requirements.

## References

1. Department of Environment Regulation (DER) 2015, *Guidance Statement: Setting Conditions*, Perth, Western Australia.
2. Department of Water and Environmental Regulation (DWER) 2020, *Guideline: Environmental Siting*, Perth, Western Australia.
3. DWER 2020, *Guideline: Risk Assessments*, Perth, Western Australia.
4. DWER 2018, *Water Quality Protection Note No. 56 Tanks for fuel and chemical storage near sensitive water resources*, Perth, Western Australia.
5. Halpern Glick Maunsell Pty Ltd, 1998, *Limestone Production Mining Lease M08/145, Exmouth, WA Environmental and Mining Management Plan – E3787E (EMMP)* , Leederville, WA.
6. *Ministerial Statement 0461 – Limestone Mine, Quicklime Plant and Use of Existing Port Facility Point Murat Shire of Exmouth* available at <https://www.epa.wa.gov.au/all-ministerial-statements>.
7. WA Limestone Contracting Pty Ltd (WA Limestone) 2025, *RE: APP-0026183 – APPLICATION FOR A WORKS APPROVAL – DRAFT INSTRUMENT AND DECISION REPORT*, email received 22 July 2025.

## Appendix 1: Consultation

Consultation method	Comments received	Department response
Application advertised on the department's website on 02 December 2024	None received.	N/A.
Shire of Exmouth advised of proposal on 03 December 2024	None received.	N/A.
Department of Energy, Mines, Industry Regulation and Safety (DEMIRS) advised of proposal on 03 December 2024	DEMIRS replied on date 12 December 2024 confirming that a mining proposal (Reg ID 30178) was approved by DEMIRS on 13 May 2013. The proposal contains information on the crushing and screening of material using mobile crushing and screening units located at quarry faces.	DEMIRS comments noted by the department.
Department of Biodiversity, Conservation and Attractions (DBCA) advised of proposal on 03 December 2024	<p>DBCA responded on 03 January 2025 and provided the following comments:</p> <ul style="list-style-type: none"> <li>Exmouth Limestone Quarry is the subject of an existing approval under Part IV of the EP Act, with environmental conditions issued under MS 0461. MS 0461 includes conditions to monitor and manage impacts on subterranean fauna, including species listed under the <i>Biodiversity Conservation Act 2016</i>, such as <i>Bamazomus subsolanus</i>, ranked endangered, and <i>Milyeringa veritas</i>, ranked vulnerable.</li> <li>Mining Lease M08/145 is located directly adjacent to the Camerons Cave and Qualing Pool Area proposed for reservation under the State Government's Plan for Our Parks initiative, to be managed in accordance with the <i>Conservation and Land Management Act 1984</i> (CALM Act). The reservation</li> </ul>	<p>DBCA comments noted by the department.</p> <p>The draft package was provided to the applicant on 01 May 2025. At this time DBCA's comments were brought to the applicant's attention.</p> <p>The applicant has stated that <i>the project is compliant with the requirements of the Native Title Act 1993 and the project land is specifically excluded from the ILUA referenced (WA Limestone 2025).</i></p>

Consultation method	Comments received	Department response
	<p>of this area is subject to an Indigenous Land Use Agreement (ILUA) negotiated between DBCA, on behalf of the State, and the Nganhurra Thanardi Garrbu Aboriginal Corporation, as the registered Native Title Body Corporate for the area. This ILUA was registered on 9 September 2024 (National Native Title Tribunal, 2024).</p>	
<p>Water Corporation advised of proposal on 14 January 2025</p>	<p>Water Corporation responded on 14 February 2025 providing the following comments:</p> <ul style="list-style-type: none"> <li>• Exmouth Water Reserve is a Priority 1 (P1) drinking water catchment.</li> <li>• Given that all prescribed project activities are limited to the existing approved mine area within M08/145, Water Corporation's assessment of this proposal indicates that the overall risk level to the Exmouth Water Reserve is low and can be supported, as long as the applicant adheres to their stated management practices. <ul style="list-style-type: none"> <li>○ Inspection of sediment traps (at the floodway crossings of Stoney Creek haul road) after major flood events and cleared of silt build-up as necessary in accordance with the approved Environmental mine management plan (EMMP). Additional silt trips installed as needed.</li> <li>○ Surface water monitoring in creeks near the mine area after a significant flood event. Visual inspections and water testing where appropriate.</li> <li>○ Diversion of surface flows around the immediate mining site by bunds.</li> <li>○ Primary project hydrocarbon storage will be situated outside of the tenement and outside of Exmouth Water Reserve.</li> </ul> </li> </ul>	<p>Water Corporation's comments noted by the department.</p> <p>The draft package was provided to the applicant on 01 May 2025. At this time Water Corporation's comments were brought to the applicant's attention.</p> <p>The applicant has stated that <i>the comments are consistent with the approved Environmental Mining Management Plan (EMMP) and existing management controls in place</i> (WA Limestone 2025).</p>

Consultation method	Comments received	Department response
	<ul style="list-style-type: none"> <li>○ Refuelling in the mine area from a mobile tanker will take place within a bunded and HDPE lined fuel handling area.</li> <li>○ Use of portable bunds for refuelling of drill rigs or equipment that cannot be re-fuelled in the designated bund area.</li> <li>○ Refuelling of drill rigs using a truck mounted tanker fitted with a shut-off valve and continuously manned during operation.</li> <li>○ Any spillage will be cleaned up immediately in accordance with the EMMP.</li> <li>○ The bund area will be regularly inspected for spills and general condition.</li> <li>○ Toileting only in the approved ablutions with all sanitary waste collected and trucked off-site.</li> <li>• Water Corporation will seek to engage with representatives of WA Limestone to ensure regular access to the mine site to undertake inspections against the relevant ministerial conditions (MS 0461) for the purpose of drinking water catchment surveillance.</li> </ul>	
Yinggarda Aboriginal Corporation (YAC) advised of proposal on 03 December 2024	None received	N/A
Nganhurra Thanardi Garrbu Aboriginal Corporation RNTBC (NTGAC) advised of proposal on 03 December 2024	<p>NTGAC provided comment on 03 February 2025.</p> <p>NTGAC have stated the following:</p> <ul style="list-style-type: none"> <li>• Tenement M08/145 was granted in 1996 prior to the determination of native title in 2019.</li> <li>• There is one registered Aboriginal heritage site within M08/145 (Mowbara Creek 01 - Site ID 561), and two within adjacent</li> </ul>	<p>The works approval under Part V, Division 3 of the EP Act assesses emissions and discharges from the crushing and screening plant only.</p> <p>The previous approval of MS 0461 and the <i>EMMP</i> 1998 under Part IV of the EP Act is outside the scope of this assessment.</p>
Yamatji Marlpa		

Consultation method	Comments received	Department response
<p>Aboriginal Corporation (YMAC) advised of proposal on 03 December 2024</p>	<p>tenure L08/10 (Mowbara Creek 02 - Site ID 562 and Mowbara Pool - Site ID 6117).</p> <ul style="list-style-type: none"> <li>• The Environmental Management Commitments document dated October 1996 and October 1997 note that section 18 approval was granted on 25 January 1996.</li> <li>• Since 2019, NTGAC has conducted heritage surveys for various projects on the Cape Range peninsula. Over this time the understanding and documentation of the cultural values of the area – including the tenement area – has improved markedly. There are significant cultural values within the tenement area which NTGAC is concerned have not been considered by the Minister in making the decision to grant the section 18 approval in 1996.</li> <li>• As M08/145 was granted in 1996 prior to native title, there is no agreement with Traditional Owners on heritage protection or mining. The lack of a heritage agreement or mining agreement in relation to M08/145 means that surveys have not been carried out to document heritage values and establish any exclusion zones within the tenement that may be required to protect cultural heritage.</li> <li>• NTGAC would like to see the applicant enter into a heritage and mining agreement with NTGAC to ensure that cultural heritage is not harmed.</li> </ul>	<p>The draft package was provided to the applicant on 01 May 2025. At this time NTGAC's comments were brought to the applicant's attention.</p> <p>Exmouth Limestone (tenement holder) on behalf of the applicant submitted a letter to the Department of Planning Lands and Heritage (DPLH) regarding aboriginal heritage for the project.</p> <p>The department also referred the proposal to DPLH on 08 September 2025. See comments below.</p>
<p>DPLH advised of proposal on 08 September 2025</p>	<p>DPLH provided comments on 24 September 2025.</p> <p>DPLH have stated the following -</p> <p>A review of the Register of Places and Objects, as well as the DPLH Aboriginal Heritage Database, identifies that the subject area contained within mining lease, M08/145, is not within any known and recorded Aboriginal heritage sites or places.</p> <p>Registered Aboriginal site, <i>Mowbowra Creek 01 (ID 561)</i>, lies immediately to the south of the location identified for the screening and crushing, and is outside of the actual boundary as administered by</p>	<p>DPLH comments noted by the department.</p> <p>The granting of the works approval does not remove obligations which the applicant or tenement holder may require under the AHA.</p>



Consultation method	Comments received	Department response
	<p>DPLH.</p> <p>Registered Aboriginal site, <i>Mowbowra Creek 02 (ID 562)</i>, lies a distance to the south east of the location identified for the screening and crushing, and is outside of the boundary as administered by DPLH.</p> <p>As the application for the works is not within any known and recorded Aboriginal site, or within or near to any recorded Aboriginal heritage boundaries, there are no objections or comments that DPLH would raise in reference to restricting the granting of this application, under the provisions of the governing legislation, being the <i>Aboriginal Heritage Act 1972 (AHA)</i>.</p> <p>As the subject area has limited and historical Aboriginal heritage surveys undertaken across this location, DPLH would outline that any proponent undertaking activities understands their obligations under the governing legislation and considers an inclusion of a site discovery procedure in the activity documentation.</p> <p>The activities being operated by Exmouth Limestone are not being conducted under any current approval or authority by virtue of Section 18 of the AHA.</p> <p>DPLH would advise that regular checks of the Aboriginal Cultural Heritage Inquiry System should be undertaken to ensure no new Aboriginal Cultural Heritage has been reported within the subject area.</p>	
Applicant was provided with draft documents on 01 May 2025	<p>On 22 July 2025, the applicant provided responses to the department's request for further information within the draft package (WA Limestone 2025).</p> <p>On 02 September 2025, the applicant provided the submission letter to DPLH.</p>	<p>The applicant's responses are noted by the department.</p> <p>This decision report and the works approval have been updated accordingly.</p>