



## Application for Works Approval Amendment

### Part V Division 3 of the *Environmental Protection Act 1986*

---

<b>Works Approval Number</b>	W2943/2025/1
<b>Works Approval Holder</b>	Northern Minerals Limited
<b>ACN</b>	119 966 353
<b>File Number</b>	APP-0032342
<b>Premises</b>	Browns Range Project  Legal description –  Part of Mining Lease M80/650, and Miscellaneous Leases L80/107, L80/109, L80/110, L80/111  As defined by the premises maps to the issued Works Approval
<b>Date of Report</b>	11 March 2026
<b>Decision</b>	Revised works approval granted

## Table of Contents

<b>1. Decision summary</b>	<b>3</b>
<b>2. Scope of assessment</b>	<b>3</b>
2.1 Regulatory framework	3
2.2 Amendment summary	3
2.3 Part IV of the EP Act	3
<b>3. Risk assessment</b>	<b>3</b>
<b>4. Consultation</b>	<b>5</b>
<b>5. Conclusion</b>	<b>5</b>
5.1 Summary of amendments	5
<b>References</b>	<b>6</b>
<b>Appendix 1: Summary of Works Approval Holder’s comments on risk assessment and draft conditions</b>	<b>7</b>
Table 1: Consultation	5
Table 2: Summary of works approval amendments	5
Figure 1: Comparison between mining tenements M80/650 (current one, top map) and M80/627 (previous one, bottom map)	4

## 1. Decision summary

Works Approval W2943/2025/1 is held by Northern Minerals Limited (Works Approval Holder) for the Browns Range Project (the Premises), located at previous Mining Lease M80/627 and Miscellaneous Lease L80/76, Halls Creek WA 6770.

This Amendment Report documents the assessment of potential risks to the environment and public health from proposed changes to the emissions and discharges during the construction and operation of the Premises. As a result of this assessment, Revised Works Approval W2943/2025/1 has been granted.

## 2. Scope of assessment

### 2.1 Regulatory framework

In completing the assessment documented in this Amendment Report, the department has considered and given due regard to its Regulatory Framework and relevant policy documents which are available at <https://dwer.wa.gov.au/regulatory-documents>.

### 2.2 Amendment summary

On 13 November 2025, the Works Approval Holder submitted an application to the department to amend Works Approval W2943/2025/1 under section 59 of the *Environmental Protection Act 1986* (EP Act). The amendment being sought is to update the premises boundary mining tenements, as these were not detailed in the previous assessment, noting the tenements were pending at the time.

The original assessment missed additional tenure (L80/107, L80/109, L80/110, L80/111) as an oversight, but these areas were included in the risk assessment. Mining tenement L80/76 was superseded by L80/109, hence this tenement was replaced in the Works Approval. Finally, mining tenement M80/627 was replaced by M80/650.

This amendment does not correspond to an administrative amendment under the EP Act 59 (1) (e), (f), (h), (i) and (j) of the EP Act, but it is administrative in nature as only the mining tenements are to be updated, without changing the premises boundary.

### 2.3 Part IV of the EP Act

MS 986 was granted on 20 October 2014 for the rare elements mine and ore facility at Browns Range. MS 986 conditions are for mining activities to minimise impact to significant species of terrestrial vertebrate fauna, and for clearing activities within the development envelope.

The Part IV proposal was first modified on 4 September 2020 to include the installation and operation of an Ore Sorting Circuit, resulting in higher radionuclide concentrations in sorted ore, intermediate process streams and the long-term storage of low-level radioactive waste (tailings).

On 26 August 2024, the proposal was modified to increase the disturbance footprint and the development envelope was realigned.

## 3. Risk assessment

The department assesses the risks of emissions from prescribed premises and identifies the potential source, pathway and impact to receptors in accordance with the *Guideline: Risk assessments* (DWER 2020).

To establish a Risk Event there must be an emission, a receptor which may be exposed to that emission through an identified actual or likely pathway, and a potential adverse effect to the receptor from exposure to that emission.

The department assessed potential new environmental receptors within or near the new tenure. The emissions considered during the assessment include dust, contaminated stormwater, treated wastewater, leachate and windblown waste, which are the emissions assessed during the original assessment for the Works Approval. The department did not note any new receptors.

The proposed new premises boundary with the updated mining tenements and the previous mining tenements are show below (Figure 1) for comparison:

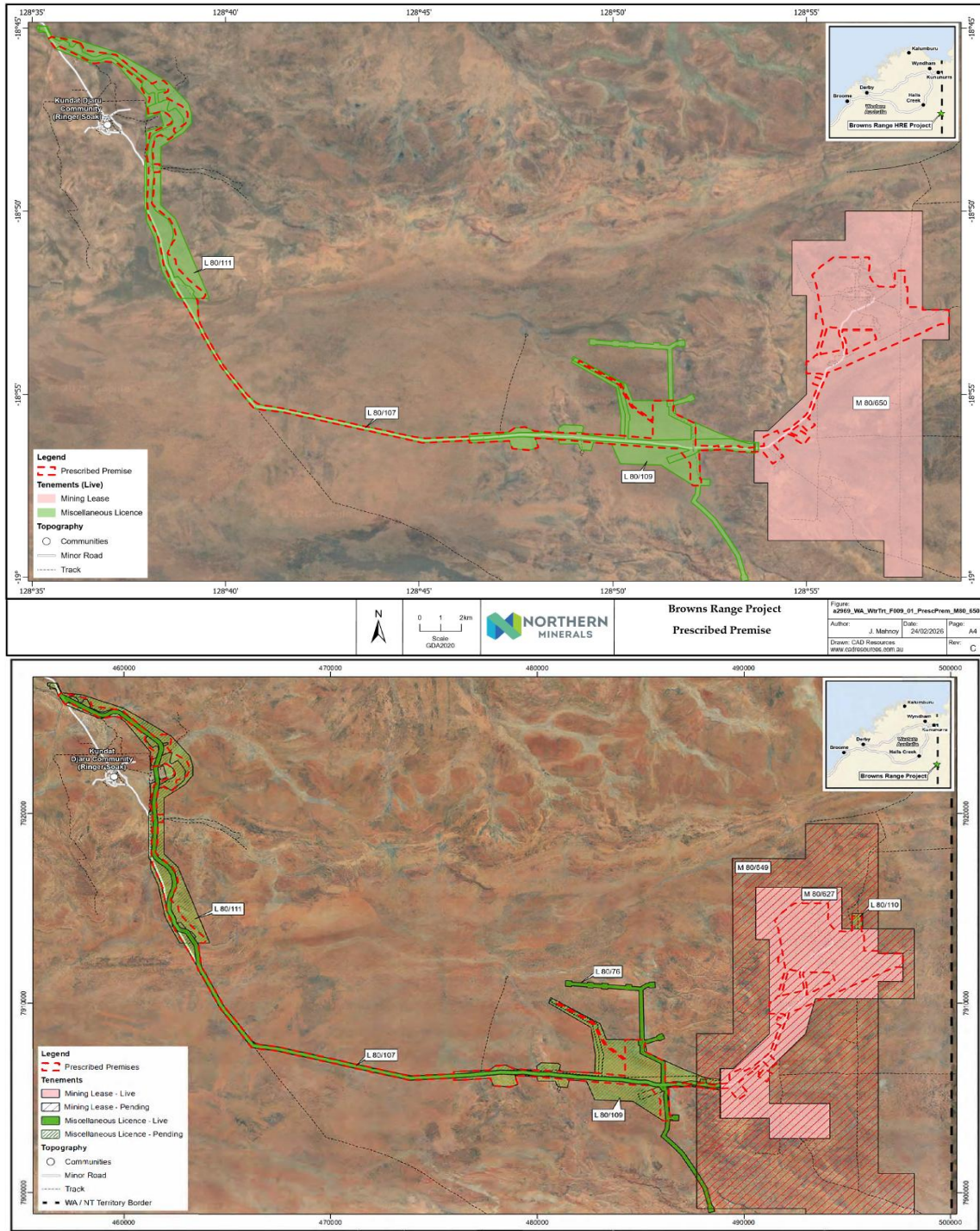


Figure 1: Comparison between mining tenements M80/650 (current one, top map) and M80/627 (previous one, bottom map)

## 4. Consultation

Table 1 provides a summary of the consultation undertaken by the department.

**Table 1: Consultation**

Consultation method	Comments received	Department response
Works Approval Holder was provided with draft amendment on 5 February 2026	The Works Approval Holder provided comments on 24 February 2023 requesting additional changes. Details in Appendix 1.	Response from the department in Appendix 1.

## 5. Conclusion

Based on the assessment in this Amendment Report, the Delegated Officer has determined that a Revised Works Approval will be granted, subject to conditions commensurate with the determined controls and necessary for administration and reporting requirements.

### 5.1 Summary of amendments

Table 2 provides a summary of the proposed amendments and will act as record of implemented changes. All proposed changes have been incorporated into the Revised Works Approval as part of the amendment process.

**Table 2: Summary of works approval amendments**

Condition no.	Proposed amendments
Front page Works Approval	Updated DWER file number Updated premises details
Figure 1 and 2	Updated
Premises boundary coordinates	Added
Schedule 2	Coordinates from premises boundary were removed (too many) and they are stored in internal Department database.

## References

1. Department of Environment Regulation (DER) 2015, *Guidance Statement: Setting Conditions*, Perth, Western Australia.
2. Department of Water and Environmental Regulation (DWER) 2020, *Guideline: Environmental Siting*, Perth, Western Australia.
3. DWER 2020, *Guideline: Risk Assessments*, Perth, Western Australia.

## Appendix 1: Summary of Works Approval Holder's comments on risk assessment and draft conditions

Condition	Summary of Works Approval Holder's comment	Department's response
Works Approval and Amendment Report front page and Premises map	<p>Additional changes requested:</p> <p>First, the addition of mining tenement L80/107, which cover a portion of the site access road, within which mobile crushing/screening, which was missing in the original application.</p> <p>Second, the update of the premises map to reflect current mining tenements.</p>	The department agreed to modify the Works Approval and Amendment report to reflect the required changes.