



## Application for Works Approval

### Part V Division 3 of the *Environmental Protection Act 1986*

---

**Works Approval Number** W3023/2025/1

**Applicant** Black Cat Civil Pty Ltd

**ACN** 156 125 307

**File number** INS-0003023 (APP-0029319)

**Premises** Local borrow pit, corner of Solar Road and Balgo Road,  
Tanami 6770

Legal description -  
Lot 21 on Deposited Plan 219593 21  
SHIRE OF HALLS CREEK

**Date of report** 11 September 2025

**Decision** Works approval granted

## Table of Contents

<b>1. Decision summary .....</b>	<b>1</b>
<b>2. Scope of assessment .....</b>	<b>1</b>
2.1 Regulatory framework .....	1
2.2 Application summary and overview of premises .....	1
2.2.1 Category 70 –Screening activities .....	2
<b>3. Risk assessment .....</b>	<b>4</b>
3.1 Source-pathways and receptors .....	4
3.1.1 Emissions and controls .....	4
3.1.2 Receptors.....	5
3.2 Risk ratings.....	9
3.3 Detailed risk assessment for noise emissions to human receptors .....	13
3.3.1 Overview of risk event.....	13
3.3.2 Risk assessment.....	13
<b>4. Consultation .....</b>	<b>16</b>
<b>5. Conclusion.....</b>	<b>16</b>
<b>References .....</b>	<b>16</b>
<b>Appendix 1: Summary of applicant’s comments on first risk assessment and draft conditions for works approval – Category 12.....</b>	<b>18</b>
<b>Appendix 1: Summary of applicant’s comments on second risk assessment and draft conditions for works approval – Category 70.....</b>	<b>19</b>
 Table 1: Proposed applicant controls .....	 4
Table 2: Sensitive human and environmental receptors and distance from prescribed activity .	6
Table 3: Risk assessment of potential emissions and discharges from the premises during installation and operation .....	10
Table 4. Sound attenuation calculation from nearest human sensitive receptor. ....	13
Table 5: Consultation .....	16
 Figure 1. Prescribed premises boundary of local borrow pit .....	 2
Figure 2. Mobile screening plant .....	3
Figure 3: Map of residences within 1km of borrow pit.....	7
Figure 4: Distance from proposed plant location to Wirrimanu Lodge.....	7
Figure 5: Distance from proposed plant location to closest sensitive receptor .....	8
Figure 6: Table 1 of the <i>Environmental Protection (Noise) Regulations 1997</i> Assigned levels for all premises.....	14

## 1. Decision summary

This decision report documents the assessment of potential risks to the environment and public health from emissions and discharges during the installation and operation of the premises. As a result of this assessment, works approval W3023/2025/1 has been granted.

## 2. Scope of assessment

### 2.1 Regulatory framework

In completing the assessment documented in this decision report, the Department of Water and Environmental Regulation (the department; DWER) has considered and given due regard to its regulatory framework and relevant policy documents which are available at <https://dwer.wa.gov.au/regulatory-documents>.

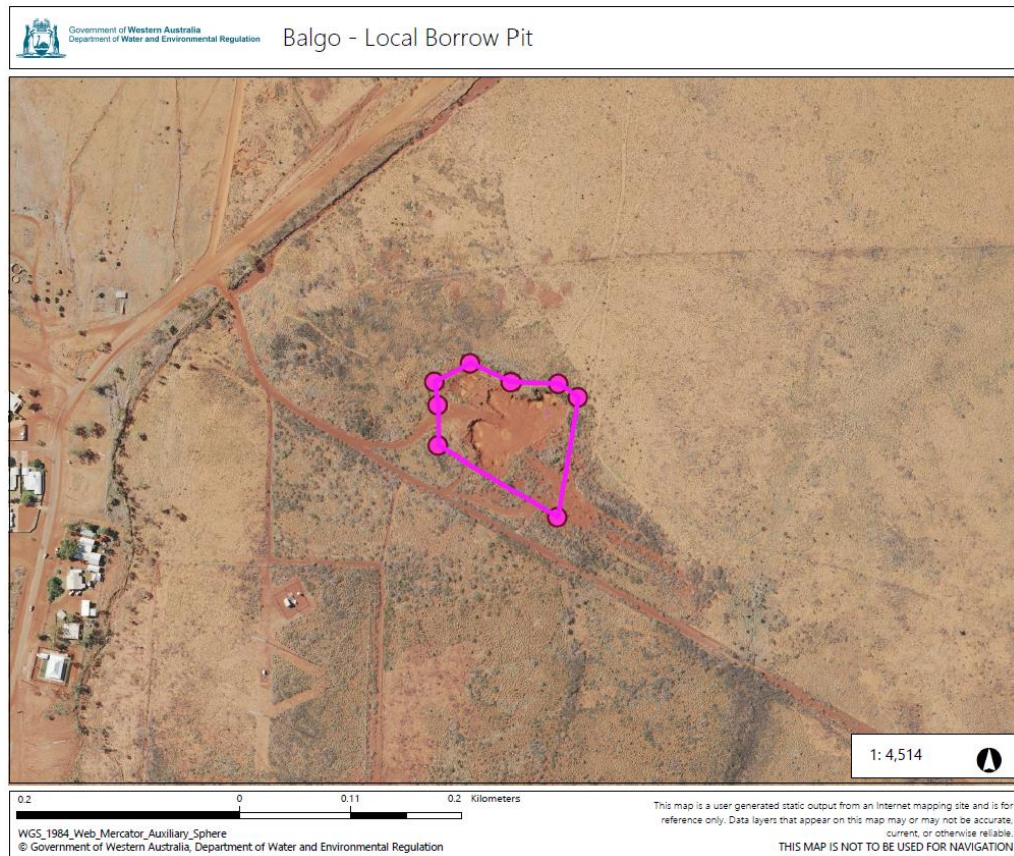
### 2.2 Application summary and overview of premises

On 2 June 2025, Black Cat Civil Pty Ltd (the applicant) submitted an application for a works approval to the department under section 54 of the *Environmental Protection Act 1986* (EP Act).

The application is to undertake works relating to the screening of material required for the Balgo Hill Airstrip project. The premises where the screening will take place is a local borrow pit located approximately 600 meters north-east of Balgo (Figure 1). The borrow pit is situated within Reserve 46573 which is under management order to the Aboriginal Lands Trust (ALT).

More than 35,000 tonnes of material are expected to be extracted from the borrow pit. It is expected that the majority of extracted material may be suitable for use without requiring screening, however screening will potentially be required for a portion of the material so an application for a works approval has been made.

The initial application proposal was made assuming crushing may be required as well as screening activities under Category 12 of the *Environmental Protections Regulations 1987*. After further consideration of the geotechnical assessment of the available material in the borrow pit it was determined that the material to be extracted from the borrow pit will not require crushing. It was reported as “generally classified as well-graded Gravel, Gravel and Sand mixture with little fines” (AMS 2023). After acquiring this information, the applicant determined to the proposed activities to be more suited to Category 70 and limited to only screening operations. The applicant was unable to determine whether screening will be necessary for the material extracted and therefore this works approval has been granted with a production capacity ranging from 5 000 to 50 000 tonnes of material per year.



**Figure 1. Prescribed premises boundary of local borrow pit**

The Balgo Hill Airstrip project has been developed to strengthen regional supply chains and emergency response capabilities for the remote communities of Balgo, Mulan and Billiluna. The Department of Transport (DoT) has contracted Black Cat Civil Pty Ltd to re-construct the Balgo Hill airstrip before the upcoming Kimberly wet season beginning in November 2025.

The proposed activity relates to Category 70 and the assessed production capacity of more than 5 000 but less than 50 000 tonnes per year under Schedule 1 of the *Environmental Protection Regulations 1987* (EP Regulations) which is defined in works approval W3023/2025/1. The infrastructure and equipment relating to the premises category and any associated activities which the department has considered in line with *Guideline: Risk Assessments* (DWER 2020) are outlined in works approval W3023/2025/1.

The decision report and works approval is limited to the installation and operation of a mobile screening plant on the prescribes premises (Figure 1).

### 2.2.1 Category 70 –Screening activities

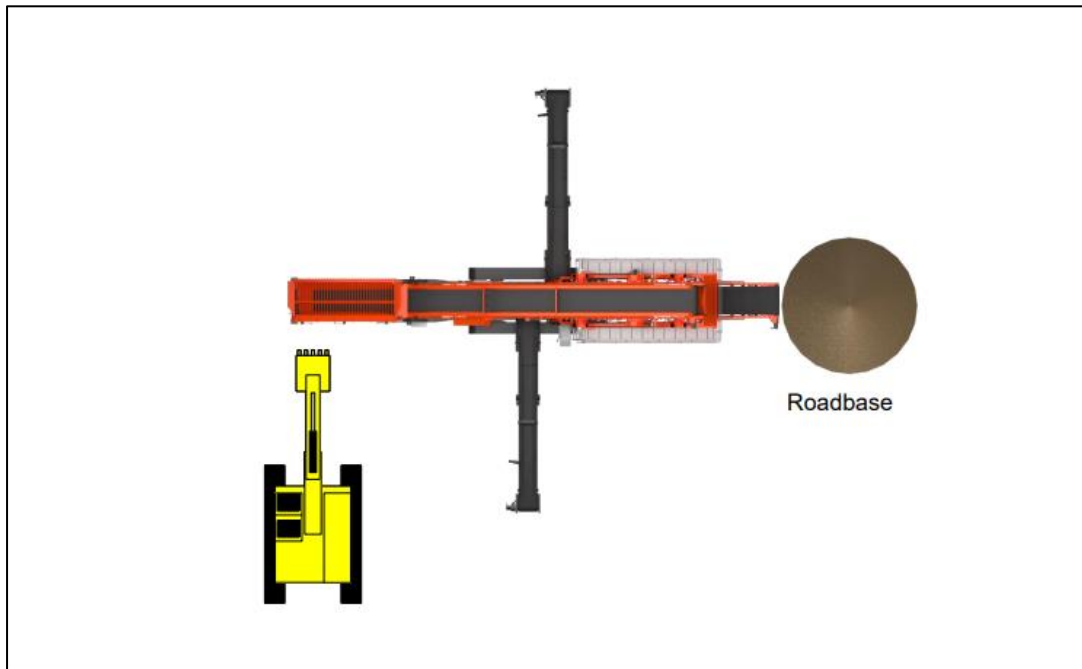
A mobile screening plant is proposed to be used as required. It will be positioned within the premises boundary to minimise noise impact at the closest sensitive receptor (refer Section 3.3 of this report).

If required, rock and natural fines will be fed into the screener of the plant before being fed into another screen collector bin with dual belts for sorting materials into stockpiles. The stockpiles will not be more than 2 m in height and will only be located within the premises.

The applicant proposes that processed material not used for the project will be available for community use or rehabilitation of the borrow pit once activities are completed.

The Balgo Hill airstrip project duration will be 35 weeks, with a 19-week standdown period due to the wet season. The proposed commencement date is in late September 2025, and the works

are scheduled for a 2:1 roster. The screening activities specified in this report are expected to have an operating period of 6 weeks.



**Figure 2. Mobile screening plant**

### 3. Risk assessment

The department assesses the risks of emissions from prescribed premises and identifies the potential source, pathway and impact to receptors in accordance with the *Guideline: Risk Assessments* (DWER 2020).

To establish a risk event there must be an emission, a receptor which may be exposed to that emission through an identified actual or likely pathway, and a potential adverse effect to the receptor from exposure to that emission.

#### 3.1 Source-pathways and receptors

##### 3.1.1 Emissions and controls

The key emissions and associated actual or likely pathway during premises installation/operation which have been considered in this decision report are detailed in Table 1 below. Table 1 also details the control measures the applicant has proposed to assist in controlling these emissions, where necessary.

**Table 1: Proposed applicant controls**

Emission	Sources	Potential pathways	Proposed controls
Installation			
Dust	Movement and storage of extracted/earthen materials  Vehicle movements	Air/windborne pathway	<ul style="list-style-type: none"><li>• Short installation timeframe (7 days);</li><li>• A water cart is to be available at all times during installation;</li><li>• Undertake visual inspections daily to monitor emissions; and</li><li>• Dust covers will be used during the transportation of materials.</li></ul>
Noise		Air/windborne pathway	<ul style="list-style-type: none"><li>• Vehicles and machinery will be maintained in accordance with the manufacturer’s specifications; and</li><li>• A register will be kept on site for complaints.</li></ul>
Contaminated stormwater		Runoff/seepage	<ul style="list-style-type: none"><li>• Stockpiles not to be within 50 m of any drains, drainage lines, creeks or other waterways and no more than 2 m in height;</li><li>• Bunding will be installed around storage areas;</li><li>• Spill containment kits are to be made available at all times;</li><li>• Daily inspections of site conditions; and</li><li>• Road drainage will be provided and maintained.</li></ul>
Operation			

Emission	Sources	Potential pathways	Proposed controls
Dust	Screening, unloading, loading and storage of material	Air/windborne pathway	<ul style="list-style-type: none"> <li>A water cart is to be available at all times during operations;</li> <li>Visual inspections to be undertaken daily to monitor emissions;</li> <li>Stockpiles will not be more than 2m in height; and</li> <li>Dust covers will be used during transportation of materials.</li> </ul>
Noise	Vehicle movements	Air/windborne pathway	<ul style="list-style-type: none"> <li>The use of non-tonal reverse beepers;</li> <li>Register kept on site for complaints; and</li> <li>Equipment and vehicles will have regular maintenance in accordance with manufacturer's specifications.</li> </ul>
Contaminated stormwater	Stockpiling of materials Storage of fuels, oils and hydrocarbons	Runoff/seepage	<ul style="list-style-type: none"> <li>Stockpiles not to be within 50m of any drains, drainage lines, creeks or other waterways and no more than 2 m in height;</li> <li>Bunding will be installed around storage areas;</li> <li>Spill containment kits are to be made available at all times; and</li> <li>Daily inspections of site conditions.</li> </ul>
Hazardous materials	Storage of fuels, oils and hydrocarbons	Runoff/seepage	<ul style="list-style-type: none"> <li>Hazardous materials are to be stored in containment cells and labelled accordingly;</li> <li>Containment cells will be surrounded by an impervious bund; and</li> <li>Spill containment kits are to be made available at all times.</li> </ul>

### 3.1.2 Receptors

In accordance with the *Guideline: Risk Assessment* (DWER 2020), the Delegated Officer has excluded the applicant's employees, visitors, and contractors from its assessment. Protection of these parties often involves different exposure risks and prevention strategies, and is provided for under other state legislation.

Table 2 and Figure 3 below provides a summary of potential human and environmental receptors that may be impacted as a result of activities upon or emission and discharges from the prescribed premises (*Guideline: Environmental Siting* (DWER 2020)).

**Table 2: Sensitive human and environmental receptors and distance from prescribed activity**

Human receptors	Distance from prescribed activity
Residential Premises: Wirrimanu Lodge Residence 1	Wirrimanu Lodge is 360 m west from the western boarder of prescribed premises. This is approximately 516m from the proposed location of the screening plant.  Residence 1 is approximately 470m from the proposed location of the screening plant.
Townsite – Balgo	600 m southwest of western boarder of prescribed premises
Environmental receptors	Distance from prescribed activity
Native Vegetation	Surrounding vegetation immediately adjacent of premises boundary to the north, south, east and west
Groundwater – Canning-Kimberly Groundwater Area 1000-3000 TDS mg/L	Underlying premises where activity will take place
Surface Water	Approximately 170 m east of activity located (eastern side of boundary)
Cultural receptors	Distance from prescribed activity
Aboriginal cultural heritage area	Prescribed premises located within the southeastern boundary of aboriginal cultural heritage area



**Figure 3: Map of residences within 1 km of borrow pit**



**Figure 4: Distance from proposed plant location to Wirrimanu Lodge**



**Figure 5: Distance from proposed plant location to closest sensitive receptor**

## 3.2 Risk ratings

Risk ratings have been assessed in accordance with the *Guideline: Risk Assessments* (DWER 2020) for each identified emission source and takes into account potential source-pathway and receptor linkages as identified in Section 3.1. Where linkages are in-complete they have not been considered further in the risk assessment.

Where the applicant has proposed mitigation measures/controls (as detailed in Section 3.1), these have been considered when determining the final risk rating. Where the Delegated Officer considers the applicant's proposed controls to be critical to maintaining an acceptable level of risk, these will be incorporated into the works approval as regulatory controls.

Additional regulatory controls may be imposed where the applicant's controls are not deemed sufficient. Where this is the case the need for additional controls will be documented and justified in Table 3.

Works approval W3023/2025/1 that accompanies this decision report authorises construction and time-limited operations. The conditions in the issued works approval, as outlined in Table 3 have been determined in accordance with *Guidance Statement: Setting Conditions* (DER 2015).

A licence is required following the time-limited operational phase authorised under the works approval to authorise emissions associated with the ongoing operation of the premises i.e. crushing and screening activities. A risk assessment for the operational phase has been included in this decision report, however licence conditions will not be finalised until the department assesses the licence application.

**Table 3: Risk assessment of potential emissions and discharges from the premises during installation and operation**

Risk events					Risk rating <sup>1</sup> C = consequence L = likelihood	Applicant controls sufficient?	Conditions <sup>2</sup> of works approval	Justification for additional regulatory controls
Sources / activities	Potential emission	Potential pathways and impact	Receptors	Applicant controls				
Installation								
Vehicle movements Excavation Movement and storage of extracted/earthen materials Cleaning of vehicles	Dust	Air / windborne pathway causing impacts to health and amenity	Wirrimanu Lodge is located 360m to the west of premises boundary  Nearby fauna  Aboriginal Cultural Heritage Area within premises boundary	Refer to Section 3.1	C = Slight L = Possible <b>Low Risk</b>	Y	Condition 1 (Table 1): Mobilisation and installation requirements of infrastructure  Condition 2: Compliance reporting  <b>Condition 8:</b> Prevention of dust crossing the premises boundary  <b>Condition 12:</b> Records and reports of complaints	N/A
	Noise				C = Slight L = Possible <b>Low Risk</b>	Y	<b>Condition 1 (Table 1):</b> Mobilisation and installation requirements of infrastructure  <b>Condition 2:</b> Compliance reporting  <b>Condition 12:</b> Records and reports of complaints	Noise emissions are expected to not have a significant impact on receptors during the installation phase of the activity.
Operation (including time-limited-operations operations)								

Risk events					Risk rating <sup>1</sup> C = consequence L = likelihood	Applicant controls sufficient?	Conditions <sup>2</sup> of works approval	Justification for additional regulatory controls
Sources / activities	Potential emission	Potential pathways and impact	Receptors	Applicant controls				
Screening, unloading, loading and storage of material Vehicle movements	Dust	Air / windborne pathway causing impacts to health and amenity	Wirrimanu Lodge is located 360m to the west of premises boundary Nearby fauna Aboriginal Cultural Heritage Area within premises boundary	Refer to Section 3.1	C = Minor L = Likely <b>Medium Risk</b>	Y	Condition 6 (Table 2): Time limited operations and operational requirements <b>Condition 8:</b> Prevention of dust crossing the premises boundary <b>Condition 12:</b> Records and reports of complaints	Additional controls have been implemented for dust control during the screening activities due to the emission of dust being more likely during the operation than the installation.
	Noise				C = Moderate L = Possible <b>Medium Risk</b>	N	Condition 6 (Table 2): Time limited operations and operational requirements <b>Condition 9:</b> Approved operation times <b>Condition 12:</b> Records and reports of complaints	See section 3.3
Stockpiling of materials	Contaminated stormwater	Runoff/seepage into underlying soil causing impacts to health of surrounding vegetation and quality of surface water drainage line and groundwater.	Groundwater Surrounding vegetation Surface water stream 170m east	Refer to section 3.1	C = Slight L = Unlikely <b>Low Risk</b>	Y	Condition 6 (Table 2): Time limited operations and operational requirements <b>Condition 7:</b> Prevention of stormwater runoff becoming contaminated at the premises	Operations will be occurring during dry season only.  Condition requiring activities to be greater than 3m above groundwater level.

Risk events					Risk rating <sup>1</sup> C = consequence L = likelihood	Applicant controls sufficient?	Conditions <sup>2</sup> of works approval	Justification for additional regulatory controls
Sources / activities	Potential emission	Potential pathways and impact	Receptors	Applicant controls				
Storage of fuels, oils and chemicals	Contaminated stormwater	Runoff/seepage into underlying soil causing impacts to environment and amenity	Groundwater Surrounding vegetation Surface water stream 170m east	Refer to section 3.1	C = Slight L = Unlikely <b>Low Risk</b>	Y	Conditions 1 (Table 1): Mobilisation and installation requirements of infrastructure Condition 2: Compliance reporting Condition 6 (Table 2): Time limited operations and operational requirements Condition 7: Prevention of stormwater runoff becoming contaminated at the premises	Operations will be occurring during dry season only. Condition requiring activities to be greater than 3m above groundwater level.
	Hazardous materials				C = Slight L = Unlikely <b>Low Risk</b>	Y	Conditions 1 (Table 1): Mobilisation and installation requirements of infrastructure Condition 2: Compliance reporting Condition 6 (Table 2): Time limited operations and operational requirements <b><u>Condition 7:</u></b> Prevention of stormwater runoff becoming contaminated at the premises	

Note 1: Consequence ratings, likelihood ratings and risk descriptions are detailed in the *Guideline: Risk Assessments* (DWER 2020).

Note 2: Proposed applicant controls are depicted by standard text. **Bold and underline text** depicts additional regulatory controls imposed by department.

### 3.3 Detailed risk assessment for noise emissions to human receptors

#### 3.3.1 Overview of risk event

Through the consideration of the source-pathway-receptor analysis, there is a risk of noise emissions produced by screening operations impacting nearby sensitive human receptors, as specified in Table 2 of this report. Based on the proximity of human receptors to the screening activities, it has been determined that noise emissions from the operation of the plant could cause moderate consequences to amenity with the likelihood of being possible. The overall environmental risk rating for the noise emissions is considered medium.

The noise levels from the screening plant equipment calculated at the nearest human sensitive receptor are as shown in Table 4.

**Table 4. Sound attenuation calculation from nearest human sensitive receptor.**

Equipment	Lp (R1) (dB)*	R1 (m)*	R2 (m)*	Sound attenuation equation	Lp(R2) (dB)*
Screeener	94	1	470	$Lp(R2) = 94 - 20 \cdot \log_{10}(460/1)$	40.56

\* Lp (R1) – known sound pressure

\* Lp(R2) - unknown sound pressure at nearest human sensitive receptor

\* R1 – distance from the noise source to location known sound pressure

\* R2 – distance from the noise source to nearest human sensitive receptor

#### 3.3.2 Risk assessment

According to the calculations in Table 4, the operation of the screening plant equipment will only meet the noise levels specified for noise sensitive premises in Table 1 from the *Environmental Protection (Noise) Regulations 1997* (Noise Regulations) (Figure 6), for the periods of 7am to 7pm (Monday to Saturday). Screening operation times will therefore be limited to these hours via condition 9 of works approval W3023/2025/1.

Prior to the removal of crushing equipment from the proposal the noise was estimated by the department as always exceeding the Noise Regulations and monitoring would be required to provide evidence that the operation met the regulations. With the reduction of equipment to only screening, and the setting of operating hours to those for 7am to 7pm (Monday to Saturday), the Delegated Officer considers the risk of exceedance sufficiently low that monitoring will not be required.

**Table 1**

Type of premises receiving noise	Time of day	Assigned level (dB)		
		L <sub>A</sub> 10	L <sub>A</sub> 1	L <sub>A</sub> max
Noise sensitive premises: highly sensitive area	0700 to 1900 hours Monday to Saturday	45 + influencing factor	55 + influencing factor	65 + influencing factor
	0900 to 1900 hours Sunday and public holidays	40 + influencing factor	50 + influencing factor	65 + influencing factor
	1900 to 2200 hours all days	40 + influencing factor	50 + influencing factor	55 + influencing factor
	2200 hours on any day to 0700 hours Monday to Saturday and 0900 hours Sunday and public holidays	35 + influencing factor	45 + influencing factor	55 + influencing factor
Noise sensitive premises: any area other than highly sensitive area	All hours	60	75	80
Commercial premises	All hours	60	75	80
Industrial and utility premises other than those in the Kwinana Industrial Area	All hours	65	80	90

**Figure 6: Table 1 of the *Environmental Protection (Noise) Regulations 1997* Assigned levels for all premises****Controls**

The noise emissions from the screening activities will be managed under controls proposed by the applicant and conditions on the works approval.

The screening plant is to be positioned within the premises to minimise noise impact at the closest sensitive receptor. This is to be achieved by maximizing the distance of the machinery from the nearest receptors or bunding of the machinery by positioning it within the bottom of the borrow pit such that the walls create a barrier to noise reaching the sensitive receptors.

Additionally, the operation will only be carried out over a 6-week period. This will reduce the potential time in which a potential risk event may occur.

Additional controls set by the department to be conditioned on the works approval will include;

- the use of non-tonal alarms on all plant equipment;
- vehicle movement controls are to be implemented (speed limits) to minimise dust generation;
- positioning of the plant within the premises to minimise noise impact at the closest sensitive receptor;

These controls are expected to reduce the risk from noise impacts on human amenity to low. A complaints register will be available at all times during operations to record potential non-compliances with the works approval condition and/or the *Environmental Protection (noise) Regulations 1997*.

## 4. Consultation

Table 5 provides a summary of the consultation undertaken by the department.

**Table 5: Consultation**

Consultation method	Comments received	Department response
Application advertised on the department's website on 23 July 2025.	No comments received.	N/A
Local Government Authority (Shire of Halls Creek) advised of proposal on 23 July 2025.	No comments received.	N/A
Department of Planning, Lands and Heritage (DPLH) advised of proposal 23 July 2025.	Comments received 27 August 2025. DPLH recommends Black Cat Civil (the applicant) contact DPLH, aboriginal Heritage Conservation team to determine whether the proposed works have an impact to the Aboriginal sites as the premise partially intersects with the boundary of an Aboriginal Heritage site.  On 5 September 2025, DPLH confirmed advice sent to the DoT on 15/11/2024 is still valid and that no approvals under the <i>Aboriginal Heritage Act 1972 (AHA)</i> are required for works approval W3023/2025/1.	Noted, no approvals under the <i>AHA</i> approvals required for works approval W3023/2025/1.
Wirrimanu Aboriginal Corporation advised of proposal on 23 July 2025.	No comments received.	N/A
Application advertised on the West Australian on 28 July 2025.	No comments received.	N/A
Applicant was provided with draft documents on 15 August 2025.	See Appendix 1	See Appendix 1

## 5. Conclusion

Based on the assessment in this decision report, the Delegated Officer has determined that a works approval will be granted, subject to conditions commensurate with the determined controls and necessary for administration and reporting requirements.

## References

[W3023/2025/1](#)

1. Aerodrome Management Services Pty Ltd (AMS) 2023, *Technical Memorandum – Balgo Hill Aerodrome – Geotechnical Assessment*, Perth, Western Australia.
2. Environmental Protection Authority (EPA) 2005, *Guidance for the Assessment of Environmental Factors: Separation Distances between Industrial and Sensitive Land Uses*, Perth, Western Australia.
3. Department of Environment Regulation (DER) 2015, *Guidance Statement: Setting Conditions*, Perth, Western Australia.
4. Department of Water and Environmental Regulation (DWER) 2020, *Guideline: Environmental Siting*, Perth, Western Australia.
5. DWER 2020, *Guideline: Risk Assessments*, Perth, Western Australia.
6. Black Cat Civil (BCC) 2025, *Environmental Management Plan: Balgo Hill Airstrip Crushing and Screening*, Nambour, Queensland
7. Black Cat Civil (BCC) 2025, *Construction Methodology: Balgo Hill Airstrip Crushing and Screening*, Nambour, Queensland

## Appendix 1: Summary of applicant's comments on first risk assessment and draft conditions for works approval – Category 12

Condition	Summary of applicant's comment	Department's response
Figure of layout of the screening plant	Applicant provided figure.	Accepted and added.
Stockpiles as noise bunds	Applicant confirmed stockpiles will be either source material for crushing, finished product material for use or waste material. The stockpiles will be continually added to and removed from as the project requires so their height will vary. On average the stockpiles will be approximately 1 m tall.	The stockpiles will not qualify as noise bunds used for controls in the works approval. Condition of stockpiles used as noise bunds has been removed.
Duration of work operations	Applicant confirmed roster will be continuous 2:1 roster meaning they estimate there will be 6 weeks of continuous work, which is 42 days.	Noted.
Condition 1	Applicant asked if exhaust silencing systems on equipment is required. Applicant confirmed the use of non-tonal reverse beepers on all plant equipment.	The exhaust silencing systems condition has been removed on confirmation of the use of non-tonal alarms on all plant equipment.  Positioning of plant equipment in a way to mitigate noise emissions has been added as an additional control.
Condition 9	Applicant states work contract from the DoT allows for full working hours 7 days a week to achieve the contractual program	Following advice from DWER's Noise Branch, the operational hours will be limited to daytime hours until proven the works approval holder can meet the noise regulations. Daytime hours will be 7am to 7pm (Monday to Saturday) as specified in Figure 6 of this report.
Condition 10 and 11	Applicant requests DWER confirm if the noise monitoring during time limited operations and noise monitoring compliance reporting are still required as they believe they are below the prescribed levels	Noise levels are expected to exceed the LA10 Monday to Saturday 7am to 7pm assigned levels by +3dB if all equipment is operated at the same time, before adjustments of tonality. On Sundays and public holidays, the exceedance would be in the region of +8dB before tonality is considered. Noise monitoring will remain as a condition in the licence to ensure levels are not exceeded at nearby receptors.
Schedule 1	Applicant provided a premises map	Premises map not accepted as not clear enough and cannot ready scale. New map has been created by the department using the coordinates provided by the applicant.

Condition	Summary of applicant's comment	Department's response
Schedule 2	Applicant provided premises boundary coordinated in GDA2020	Noted and accepted, added coordinates to Schedule 2.
Operations	Applicant has confirmed the material acquired from the borrow pit will not require crushing and therefore only screening is required to be assessed on the works approval.	Noted, the works approval will change from a Category 12 to a Category 70 limited to only screening activities. A new risk assessment has been conducted and conditions changed accordingly. A second draft package will be sent to the applicant for review.

## Appendix 1: Summary of applicant's comments on second risk assessment and draft conditions for works approval – Category 70

Condition	Summary of applicant's comment	Department's response
Condition 1 (Table 1)	Applicant confirmed Item 1: Mobile screening plant will not require a scalper.	Noted, scalper removed from the assessment.
Consultation period	Applicant confirmed to waive the remaining consultation period on 10 September 2025.	Noted, the consultation period has been waived and final package sent 11 September 2025.