



## Application for Works Approval

### Part V Division 3 of the *Environmental Protection Act 1986*

---

**Works Approval Number** W3038/2025/1

**Applicant** Atlas Iron Pty Ltd

**ACN** 110 396 168

**Application Number** APP-0029592

**Premises** Miralga Creek DSO Project – Sandtrax Operations

Legal description -  
Within M 45/1280  
As defined by the coordinates in Schedule 1 of the Works Approval

**Date of Report** 24/09/2025 (FINAL)

**Status of Report** Draft for Internal Review

# Table of Contents

<b>1. Decision summary .....</b>	<b>1</b>
<b>2. Scope of assessment .....</b>	<b>1</b>
2.1 Regulatory framework .....	1
2.2 Application summary and overview of premises .....	1
2.3 Part IV of the EP Act.....	3
<b>3. Risk assessment.....</b>	<b>3</b>
3.1 Source-pathways and receptors .....	3
3.1.1 Emissions and controls .....	3
3.1.2 Receptors.....	5
3.2 Risk ratings.....	7
<b>4. Consultation .....</b>	<b>10</b>
<b>5. Conclusion .....</b>	<b>10</b>
<b>References .....</b>	<b>10</b>

Table 1: Proposed applicant controls .....	4
Table 2: Sensitive human and environmental receptors and distance from prescribed activity ..	5
Table 3: Risk assessment of potential emissions and discharges from the premises during construction and operation .....	8
Table 4: Consultation .....	10
Figure 1: Location of proposed crushing and screening facility .....	2
Figure 2: Schematic of Crushing and Screening facility layout on the ROM .....	3

## 1. Decision summary

This decision report documents the assessment of potential risks to the environment and public health from emissions and discharges during the construction and operation of the premises. As a result of this assessment, works approval W3038/2025/1 has been granted.

## 2. Scope of assessment

### 2.1 Regulatory framework

In completing the assessment documented in this decision report, the Department of Water and Environmental Regulation (the department; DWER) has considered and given due regard to its regulatory framework and relevant policy documents which are available at <https://dwer.wa.gov.au/regulatory-documents>.

### 2.2 Application summary and overview of premises

On 4 July 2025, Atlas Iron Pty Ltd (the applicant) applied for a works approval for the installation and time limited operations of a mobile crushing and screening plant at their Miralga Creek DSO Project – Sandtrax Operations (the premises).

The premises is approximately 55 km west of Marble Bar.

The premises relates to the category and assessed design capacity under Schedule 1 of the *Environmental Protection Regulations 1987* (EP Regulations) which are defined in works approval W3038/2025/1. The infrastructure and equipment relating to the premises category and any associated activities which the department has considered in line with *Guideline: Risk Assessments* (DWER 2020) are outlined in works approval W3038/2025/1.

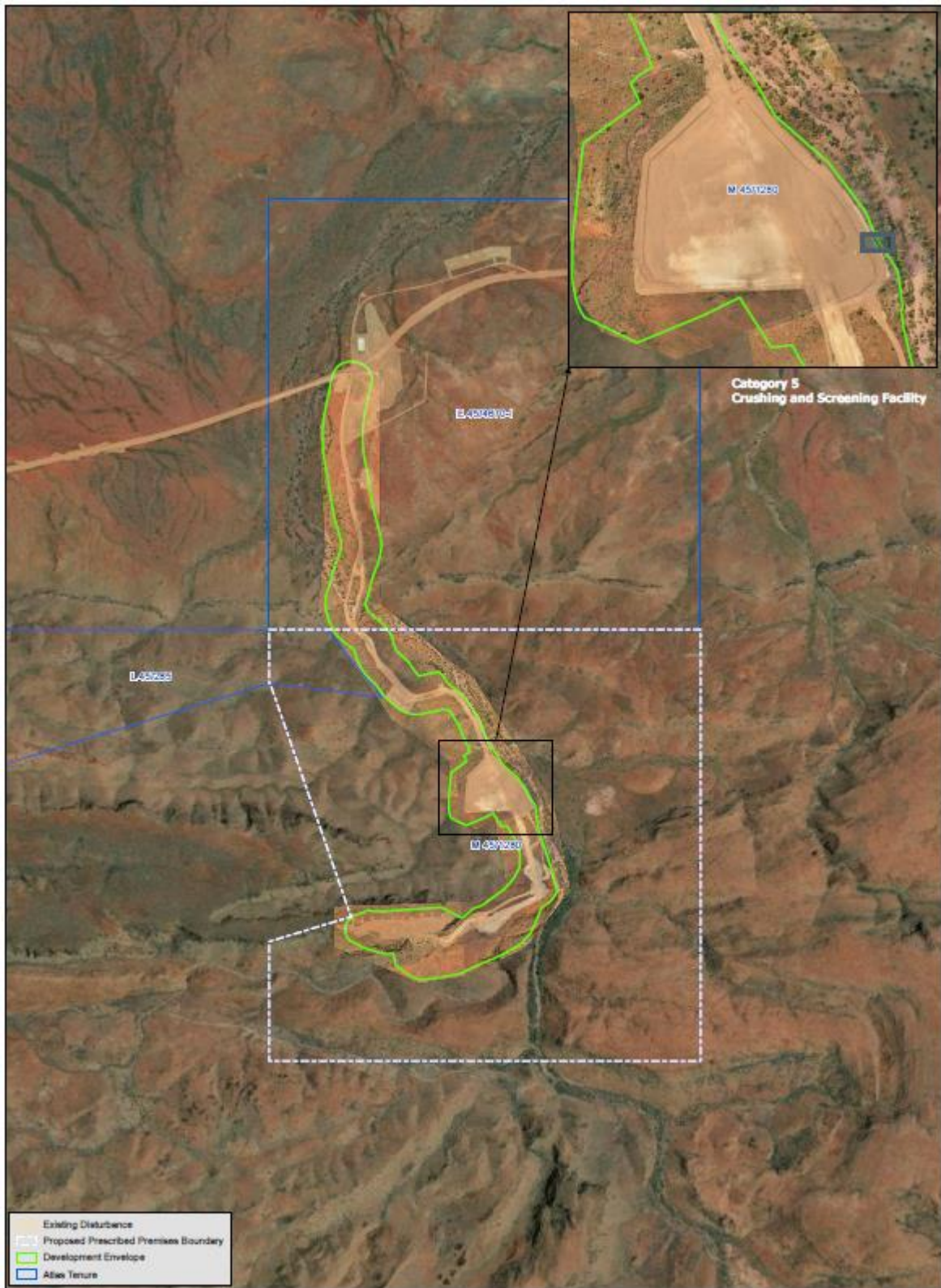
The location of the facility will be at the existing run of mine (ROM) pad on mining tenement M 45/1280 that was cleared and established during the early development stages of the Project. The location of the proposed crushing and screening facility is shown in Figure 1 and an indicative layout of the screen and stockpiles is shown in Figure 2. The stockpiling capacity of the ROM is approximately 700,000 tonnes.

The crushing and screening facility will be semi-mobile and manufactured offsite before being assembled at the ROM. No additional clearing of native vegetation will be required.

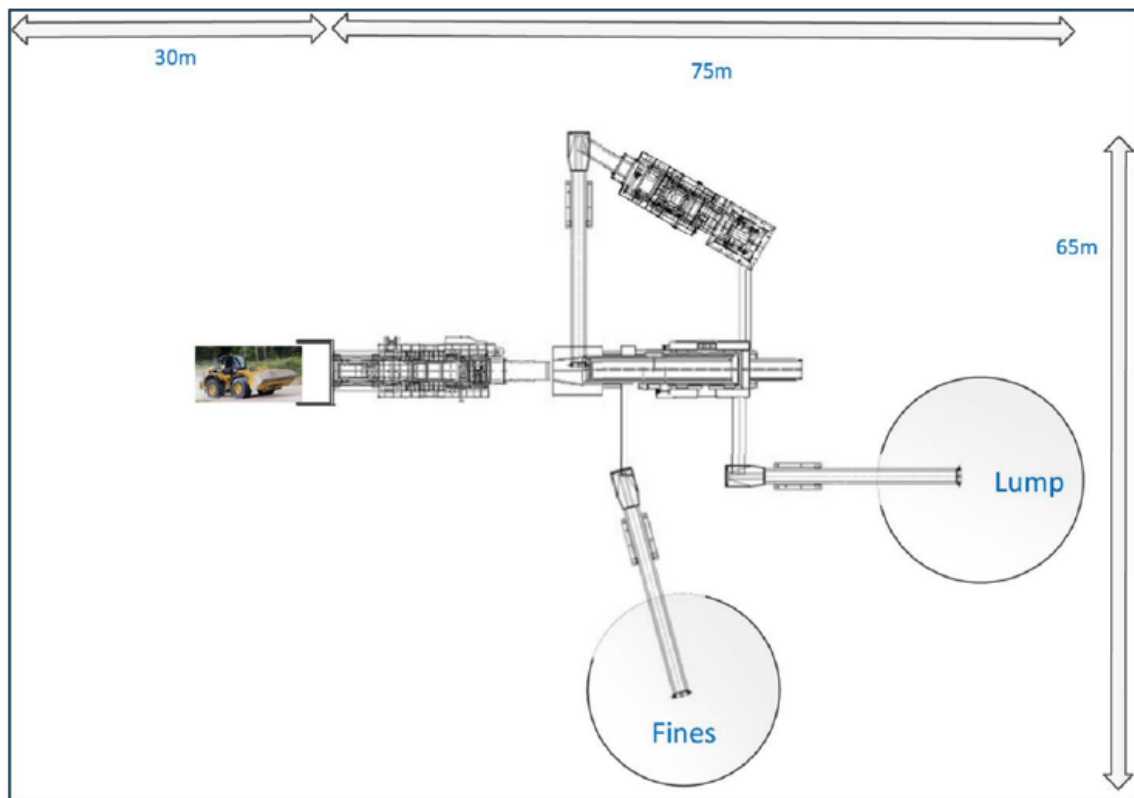
The crushing and screening facility will be mobile unit and include the following:

- 1x track mounted 696 Finlay 3 Deck Supertrack Screening Plant (or equivalent\*)
- 1 x track mounted JM1310 Jaw Crusher (or equivalent\*)
- 1 x Track mounted C-1540 Cone Crusher (or equivalent\*)
- 2 x tracked conveyor
- 2 x 15 m Stackers

On completion of time limited operations (TLO) the plant will be operated under existing licence L9337/2022/1.



**Figure 1: Location of proposed crushing and screening facility**



**Figure 2: Schematic of Crushing and Screening facility layout on the ROM**

## 2.3 Part IV of the EP Act

The EPA has previously assessed the above watertable mining of iron ore from Sandtrax, Miralga West and Miralga East deposits. As a result of the assessment, Ministerial Statement (MS) 1154 was published.

MS 1154 requires the proponent to develop and manage plans relating to:

- Terrestrial Fauna (Condition 6)
- Offsets to clearing of native vegetation (Condition 7)

## 3. Risk assessment

The department assesses the risks of emissions from prescribed premises and identifies the potential source, pathway and impact to receptors in accordance with the *Guideline: Risk Assessments* (DWER 2020).

To establish a risk event there must be an emission, a receptor which may be exposed to that emission through an identified actual or likely pathway, and a potential adverse effect to the receptor from exposure to that emission.

### 3.1 Source-pathways and receptors

#### 3.1.1 Emissions and controls

The key emissions and associated actual or likely pathway during premises construction and operation which have been considered in this decision report are detailed in Table 1 below. Table 1 also details the control measures the applicant has proposed to assist in controlling these emissions, where necessary.

**Table 1: Proposed applicant controls**

Emission	Sources	Potential pathways	Proposed controls
<b>Construction</b>			
Dust	Installation of crushing and screening plant.	Air / windborne pathway	<ul style="list-style-type: none"> <li>Majority of the mobile crushing equipment is fabricated offsite and brought to site to be assembled (i.e. installed).</li> <li>Dust emissions during installation are minor therefore no active dust controls have been proposed.</li> </ul>
Noise	Installation of crushing and screening plant.	Air / windborne pathway	<ul style="list-style-type: none"> <li>Majority of the mobile crushing equipment is fabricated offsite and brought to site to be assembled (i.e. installed).</li> <li>All noise emissions will be compliant with the <i>Environmental Protection (Noise) Regulations 1997</i>.</li> </ul>
<b>Operation</b>			
Dust	Crushing of material, vehicle movements, lift-off from stockpiles and/or stored product, earthworks etc.	Air / windborne pathway	<ul style="list-style-type: none"> <li>Vehicle speeds limits will be imposed and enforced on all Project roads.</li> <li>Use of water carts for dust suppression on stockpiles.</li> <li>Water sprays on the feed bin, conveyor transfer points and stacker head.</li> <li>Water carts on access roads and work areas to minimise dust from light vehicles, trucks, bobcats and loaders.</li> <li>Water will be added to the ore to achieve the required dust extinction moisture content.</li> </ul>
Noise	Crushing and screening of material		<ul style="list-style-type: none"> <li>All noise emissions will be compliant with the <i>Environmental Protection (Noise) Regulations 1997</i>.</li> <li>Long term monitoring equipment has been established in caves around the project to monitor ongoing Pilbara Leaf Nosed Bat and Ghost Bat activity, as well as annual monitoring of significant species to assess/monitor potential impacts from noise.</li> </ul>
Sediment laden stormwater	Stockpiling of ore, lump and fines. Dust on surface of Rom	Surface run-off and overland flow.	<ul style="list-style-type: none"> <li>The crushing and screening plant will be contained within an earth bund to prevent ingress and egress of stormwater.</li> <li>All stormwater flow is to sedimentation basin and drainage channels.</li> <li>The area of the sedimentation basin is 4,500 m2 and it is 3 metres deep it will</li> </ul>



Emission	Sources	Potential pathways	Proposed controls
			have the capacity to contain any stormwater received over the two year mine life.
Hydrocarbon spills or leaks	Construction and operation of crushing and screening facility Vehicle and equipment movements operation on unsealed road	Surface runoff Seepage to soil and groundwater	<ul style="list-style-type: none"> <li>Hydrocarbons and dangerous goods and hazardous substances will be stored and handled in accordance with the <i>Dangerous Goods (Storage and Handling of Non-explosives) Safety Regulations 2007</i>, relevant Australian Standards including the design specifications of AS 1940 – Storage and Handling of Flammable and Combustible Liquids and relevant MSDS.</li> <li>Spill recovery and clean up materials will be maintained at all hydrocarbon and other hazardous materials storage areas.</li> <li>Contaminated soils will be stockpiled and removed off-site by a licenced contractor.</li> <li>Refuelling shall not occur within 30 metres of a watercourse.</li> </ul>

### 3.1.2 Receptors

In accordance with the *Guideline: Risk Assessment* (DWER 2020), the Delegated Officer has excluded the applicant's employees, visitors, and contractors from its assessment. Protection of these parties often involves different exposure risks and prevention strategies and is provided for under other state legislation.

Table 2 and **Error! Reference source not found.** below provides a summary of potential human and environmental receptors that may be impacted as a result of activities upon or emission and discharges from the prescribed premises (*Guideline: Environmental Siting* (DWER 2020)).

**Table 2: Sensitive human and environmental receptors and distance from prescribed activity**

Human receptors	Distance from prescribed activity
No human receptors	NA
Environmental receptors	Distance from prescribed activity
Seasonal Creek	Runs through prescribed premises and 50m east of the ROM
Underlying groundwater (non-potable purposes)	Varies from 7 metres below ground level (mBGL) to 100 mBGL.
Flora	No threatened flora or threatened ecological communities within or adjacent to the prescribed premises
Fauna	A total of seven vertebrate species listed as conservation significant were recorded or are

	likely to occur at the Project. These include Northern Quoll, Pilbara Leaf-nosed Bat, Western Pebble-mound Mouse, Ghost Bat, Northern Brushtail Possum, Grey Falcon, Peregrine Falcon.
<b>Cultural receptors</b>	<b>Distance from activity / prescribed premises</b>
Aboriginal heritage site	DPLH registered site is 2.89 km south east of the ROM. Unregistered site 181 metres east of the ROM.



## 3.2 Risk ratings

Risk ratings have been assessed in accordance with the *Guideline: Risk Assessments* (DWER 2020) for each identified emission source and takes into account potential source-pathway and receptor linkages as identified in Section 3.1. Where linkages are in-complete they have not been considered further in the risk assessment.

Where the applicant has proposed mitigation measures/controls (as detailed in Section 3.1), these have been considered when determining the final risk rating. Where the delegated officer considers the applicant's proposed controls to be critical to maintaining an acceptable level of risk, these will be incorporated into the works approval as regulatory controls.

Additional regulatory controls may be imposed where the applicant's controls are not deemed sufficient. Where this is the case the need for additional controls will be documented and justified in Table 3.

Works approval W3038/2025/1 that accompanies this decision report authorises construction and time-limited operations. The conditions in the issued works approval, as outlined in Table 3 have been determined in accordance with *Guidance Statement: Setting Conditions* (DER 2015).

A licence is required following the time-limited operational phase authorised under the works approval to authorise emissions associated with the operation of the premises. A risk assessment for the operational phase has been included in this decision report, however licence conditions will not be finalised until the department assesses the licence application.

**Table 3: Risk assessment of potential emissions and discharges from the premises during construction and operation**

Risk events					Risk rating <sup>1</sup> C = consequence L = likelihood	Applicant controls sufficient?	Conditions <sup>2</sup> of works approval	Justification for additional regulatory controls/DWER Comments
Sources / activities	Potential emission	Potential pathways and impact	Receptors	Applicant controls				
Construction								
Placement of screen and associated equipment including vehicle movements (reversing beepers).  Construction of stormwater channels, bund and stormwater sump.	Dust	Air / windborne pathway causing impacts to health and amenity	Seasonal creek 50 m from the ROM.  Fauna - refer to Table 2	Refer to Section 3.1	C = Minor L = Unlikely <b>Medium Risk</b>	Y	Condition 1	The applicant's management controls for dust are sufficient in minimising the impact to the environment.
	Noise			Refer to Section 3.1	C = Moderate L = Possible <b>Medium Risk</b>	Y	NA	Monitoring of bats and other significant species to assess if any impact on fauna  <i>The Environmental Protection (Noise) Regulations 1997</i> apply
Operation (including time-limited-operations operations)								
Screening, crushing, unloading, loading and storage of material  Vehicle movements	Dust	Air / windborne pathway causing impacts to health and amenity	Seasonal creek 50 m from the ROM.  Fauna - refer to Table 2	Refer to Section 3.1	C = Moderate L = Unlikely <b>Medium Risk</b>	Y	Condition 1, 6	The applicant's management controls for dust are sufficient in minimising the impact to the environment.
	Noise	Air / windborne pathway causing impacts to health and amenity	Seasonal creek 50 m from the ROM.  Fauna - refer to Table 2	Refer to Section 3.1	C = Moderate L = Possible <b>Medium Risk</b>	Y	NA	Monitoring of bats and other significant species to assess if any impact on fauna  <i>The Environmental Protection (Noise) Regulations 1997</i> apply.
	Sediment laden stormwater	Overland runoff potentially causing ecosystem disturbance or	Seasonal creek 50 m from the ROM.	Refer to Section 3.1	C = Moderate L = Unlikely	Y	Condition 1,6	The Delegated Officer finds the existing stormwater management conditions to be sufficient

Risk events					Risk rating <sup>1</sup> C = consequence L = likelihood	Applicant controls sufficient?	Conditions <sup>2</sup> of works approval	Justification for additional regulatory controls/DWER Comments
Sources / activities	Potential emission	Potential pathways and impact	Receptors	Applicant controls				
		impacting surface water quality			<b>Medium Risk</b>			in minimising the impacts of stormwater ingress and runoff.
	Hydrocarbon leaks and spills	Direct discharge to land, seepage into soil and groundwater contamination of run-off	Seasonal creek 50 m from the ROM.  Fauna - refer to Table 2	Refer to Section 3.1	C = Minor L = Unlikely <b>Medium Risk</b>	Y	N/A	The Delegated Officer finds the existing conditions of the licence to be sufficient in minimising the impacts of spills and leaks of environmentally hazardous materials

Note 1: Consequence ratings, likelihood ratings and risk descriptions are detailed in the *Guideline: Risk Assessments* (DWER 2020).

Note 2: Proposed applicant controls are depicted by standard text. **Bold and underline text** depicts additional regulatory controls imposed by department.

## 4. Consultation

Table 4 provides a summary of the consultation undertaken by the department.

**Table 4: Consultation**

Consultation method	Comments received	Department response
Application advertised on the department's website on 18 August 2025	None received	N/A
Local Government Authority advised of proposal on 19 August 2025	None received	N/A
Nyamal Aboriginal Corporation	None received	N/A
Applicant was provided with draft documents on 17 September 2025	The applicant replied on 23 September 2025 and advised they had no comment.	N/A

## 5. Conclusion

Based on the assessment in this decision report, the delegated officer has determined that a works approval will be granted, subject to conditions commensurate with the determined controls and necessary for administration and reporting requirements.

## References

1. Department of Environment Regulation (DER) 2015, *Guidance Statement: Setting Conditions*, Perth, Western Australia.
2. Department of Water and Environmental Regulation (DWER) 2020, *Guideline: Environmental Siting*, Perth, Western Australia.
3. DWER 2020, *Guideline: Risk Assessments*, Perth, Western Australia.