



Application for Works Approval Amendment

Part V Division 3 of the *Environmental Protection Act 1986*

Works Approval Number	W5805/2015/1
Works Approval Holder	Yangibana Pty Ltd
ACN	137 945 989
File Number	DER2015/000034-1~3
Premises	Onslow Borefield Lot 556 on Plan 74894 within coordinates 301622E 7590552N, 302122E 7590552N, 302122E 7590244N, 301622E 7590244N. Lot 557 on Plan 74894 within coordinates 301622E 7590147N, 301622E 7590244N, 302122E 7590244N, 302122E 7590147N. Lot 561 on Plan 71346 within coordinates, 300941E 7590244N, 301622E 7590244N, 301622E 7590147N, 300925E 7590144N, 293564E 7592581N, 293375E 7592749N. ONSLOW WA 6710 as depicted in Schedule 1 of the works approval
Date of Report	19/03/2023
Proposed Decision	Revised works approval granted

Steve Checker

**MANAGER WASTE INDUSTRIES
REGULATORY SERVICES**

an officer delegated under section 20 of the *Environmental Protection Act 1986* (WA)

Table of Contents

1. Decision summary	1
2. Scope of assessment	1
2.1 Regulatory framework	1
2.2 Application summary	1
3. Risk assessment	1
3.1 Source-pathways and receptors	1
3.1.1 Emissions and controls	1
3.1.2 Radiation Safety Act 1975	3
3.1.3 Receptors	4
3.2 Risk ratings	3
4. Consultation	8
5. Conclusion	8
5.1 Summary of amendments	8
References	10
Appendix 1: Application validation summary	11

1. Decision summary

Works Approval W5805/2015/1 is held by Yangibana Pty Ltd (Works Approval Holder) for the Onslow Borefield (previously known as the Onslow Water Infrastructure Upgrade Project) (the Premises), located within Lot 556 on Plan 74894; Lot 557 on Plan 74894; and Lot 561 on Plan 71346 ONSLOW WA 6710.

This Amendment Report documents the assessment of potential risks to the environment and public health from proposed changes to the emissions and discharges during the construction and operation of the Premises. As a result of this assessment, Revised Works Approval W5805/2015/1 has been granted.

2. Scope of assessment

2.1 Regulatory framework

In completing the assessment documented in this Amendment Report, the department has considered and given due regard to its Regulatory Framework and relevant policy documents which are available at <https://dwer.wa.gov.au/regulatory-documents>.

2.2 Application summary

On 20 December 2022, the Works Approval Holder submitted an application to the department to amend Works Approval W5805/2015/1 under section 59 and 59B of the *Environmental Protection Act 1986* (EP Act). The following amendments are being sought:

- Amendment to the premises name from Onslow Water Infrastructure Upgrade Project to Onslow Borefield;
- Amendment to the prescribed premises boundary to resemble the altered pipeline layout;
- Amendments to the proposed design and infrastructure.

On 3 January 2023, the Applicant confirmed they would like to include a Memo from Iconic Water Solutions dated 12th August 2022 as part of their supporting information (HPCM A2154292) which details the technical specifications of the revised brine stream from the plant.

The proposed design/ throughput capacity remains unchanged from the original works approval.

3. Risk assessment

The department assesses the risks of emissions from prescribed premises and identifies the potential source, pathway and impact to receptors in accordance with the *Guideline: Risk assessments* (DWER 2020).

To establish a Risk Event there must be an emission, a receptor which may be exposed to that emission through an identified actual or likely pathway, and a potential adverse effect to the receptor from exposure to that emission.

3.1 Source-pathways and receptors

3.1.1 Emissions and controls

The key emissions and associated actual or likely pathway during premises construction which have been considered in this Amendment Report are detailed in Table 1 below. Table 1 also details the proposed control measures the Works Approval Holder has proposed to assist in controlling these emissions, where necessary.

Table 1: Works Approval Holder controls

Emission	Sources	Potential pathways	Proposed controls
Dust	Construction and earthworks relating to the water treatment plant and pipeline	Air/windborne pathway	No specific controls proposed
Noise	Construction, earthworks and machinery relating to the water treatment plant and pipeline	Air/windborne pathway	No specific controls proposed
Potentially contaminated stormwater	General construction activities	Overland flow towards native vegetation and surface water	No specific controls proposed
Hydrocarbon and other chemical spills	Leaks and spills from machinery operation and refilling.	Direct discharge to soils and groundwater	No hydrocarbons will be stored on site; Process chemicals will be stored on bunded pallets for IBC storage or within a chemical storage container. Less chemicals requiring onsite storage than the original works approval proposed
Potentially contaminated stormwater	General operations	Overland flow towards native vegetation and surface water	Chemicals stored on bunded pallet in IBCs and the RO units are fully self-contained.
Discharging brine to quick mud creek	Discharging brine to quick mud creek	Direct discharge	Discharge effluent is a higher quality than the originally proposed works approval. The difference in proposed discharge quality is presented in Table 2 below.

The applicant has indicated that the revised plant will result in an improved quality discharge brine, these figures are presented in Table 2.

Table 2: changes in proposed discharge quality

Parameter	Units	Original Chemistry	RSS	Revised water brine stream	comment
Aluminium	mg/L	0		0*	Remains the same
Ammonia		5		0	Reduced value
Barium		9		8	
Bicarbonate		1940		1344	
Boron		16		6*	
Bromide		101		101	Remains the same
Calcium		1225		824	Reduced value
Chloride		29002		17785	
Copper		0		0*	Remains the same

Dissolved Organic Carbon		3	3	
Fluoride		3	3*	
Iodide		6	6*	
Iron		0	0	
Lead		0	0	
Magnesium		653	417	Reduced value
Manganese		0	0*	Remains the same
Nickel		0	0*	
Organic N		3	3*	
pH	pH units	6-9	7	
Potassium	mg/L	667	336	Reduced value
Radium 226	Bq/L	14	14*	Remains the same
Radium 228		23	23*	
Silica	mg/L	80	54*	Reduced value
Sodium		17838	10353	
Strontium		31	21	
Sulphate		182	4	
Thorium 228	Bq/L	2	2*	
Total Dissolved Solids	mg/L	51176	31174	Reduced value
Total Phosphorus/ Phosphate		0	0	Remains the same
CO ₂		-	134	No known previous value
Carbonate		-	4	
H		-	0	
Hardness, as CaCO ₃		-	3767	
Ammonium		33.52	17	
Nitrate		-	0	No known previous value
Hydroxide		-	0	
Phosphate		-	0	
Silicon dioxide		-	54	

Note* indicates predicted values.

3.1.2 Radiation Safety Act 1975

Advice received from the Radiological Council of Western Australia dated 19 August 2022 indicated that any risks associated with radiation are regulated by the Radiological Council under the *Radiation Safety Act 1975* and its regulations. As a mining operation, the site and operations are co-regulated for radiation with the Department of Mines, Industry Regulation and Safety.

The Radiological Council further advised that prior to any discharge of radioactive material to the environment, a registration will be required under the Radiation Safety Act which will require compliance with Australia's *Code of practice for radiation protection and radioactive waste management in mining and mineral processing (2005)*, published by the Australian Radiation Protection and Nuclear Safety Agency. As such, and consistent with the initial assessment undertaken in 2017 - NORM and radiation issues are regulated by the Radiological Council, under an approved Radiation Management Plan and are not assessed under this approval.

3.1.3 Receptors

In accordance with the *Guideline: Risk assessments* (DWER 2020), the Delegated Officer has excluded employees, visitors and contractors of the Works Approval Holder's from its assessment. Protection of these parties often involves different exposure risks and prevention strategies, and is provided for under other state legislation.

Table 3 below provides a summary of potential human and environmental receptors that may be impacted as a result of activities upon or emission and discharges from the prescribed premises (*Guideline: Environmental siting* (DWER 2020)).

Table 3: Sensitive human and environmental receptors and distance from prescribed activity

Human receptors	Distance from prescribed activity
Residential Premises	Approximately 14 km north, north-west of the premises
Wheatstone Construction Village	Approximately 3.5km west of the premises
Aboriginal Town Based Community or Reserve - Bindi Bindi (Bindibindi Community Aboriginal Corporation)	Approximately 15km north-east of the premises
Aboriginal Sites and Heritage Places Registered Sites: - Old racecourse camp and ceremonial; - Amber 1; - Griffin Gas 22 and 23; - Griffin Gas 18 – 21; - Mindurru (Ashburton River); - Amethyst 03; - Wheatstone 19 Stored Data / Not a Site: - Amber 2; - Wheatstone 28; - MP08-46; - Wheatstone 29; - WH12-03; - MP08-33; - Wheatstone 26; - Griffin Gas 12 - 17	- 5.2 km north of the premises; - 4.2 km east of the premises; - 2.7 km north-west of the premises; - 5.9km west, north-west of the premises; - 9.8km west of the premises; - 8.2 km west, north-west of the premises; - 4.3km west, south-west of the premises. - 2.6km north-east of the premises; - 3.1 km west, north-west of the premises; - 3km west, north-west of the premises; - 3.7km west of the premises; - 3.9km north-west of the premises; - 4.1km north-west of the premises; - 3.9km north-west of the premises 9km north-west of the premises
Pastoral Leases - Minderoo - Peedamulla	- Surrounding the premises to the north, east, south and west. - Approximately 1km to the east of the premises
Environmental receptors	Distance from prescribed activity
RIWI Act – Designated Surface Water Area	Within the Pilbara Surface Water Area
Underlying groundwater (Salinity 7000-	Within the Pilbara Groundwater Area

14000mg/l) RIWI Act – Proclaimed Groundwater Area	
Threatened and priority fauna Birds: >26 species of Migratory birds; >3 species of Critically Endangered birds; >1 species of Vulnerable birds; >1 species of Endangered birds; >1 species of Priority 4 birds; and >1 species of Other Specially Protected Species of bird. Reptiles: >1 species of Endangered reptile; >3 species of Vulnerable reptile; and >1 species of Other Specially Protected Species of reptile. Mammals: >1 species of Endangered mammal; and >2 species of Priority 4 mammals.	Approximately 1000 sightings combined within a 17 km radius of the premises consisting of Birds, Mammals, Reptiles and Fish with a range of conservation codes including migratory species, vulnerable, endangered, priority species, and other specially protected species.
Threatened and priority flora	Approximately 12 known records of conservation status 3 flora within a 30km radius of the premises
PEC – Tanpool Land System – Priority 1	53 km east of the premises boundary
Surface water bodies Surface water lines	Multiple minor seasonal water bodies and lines within a 5km radius of the premises boundary

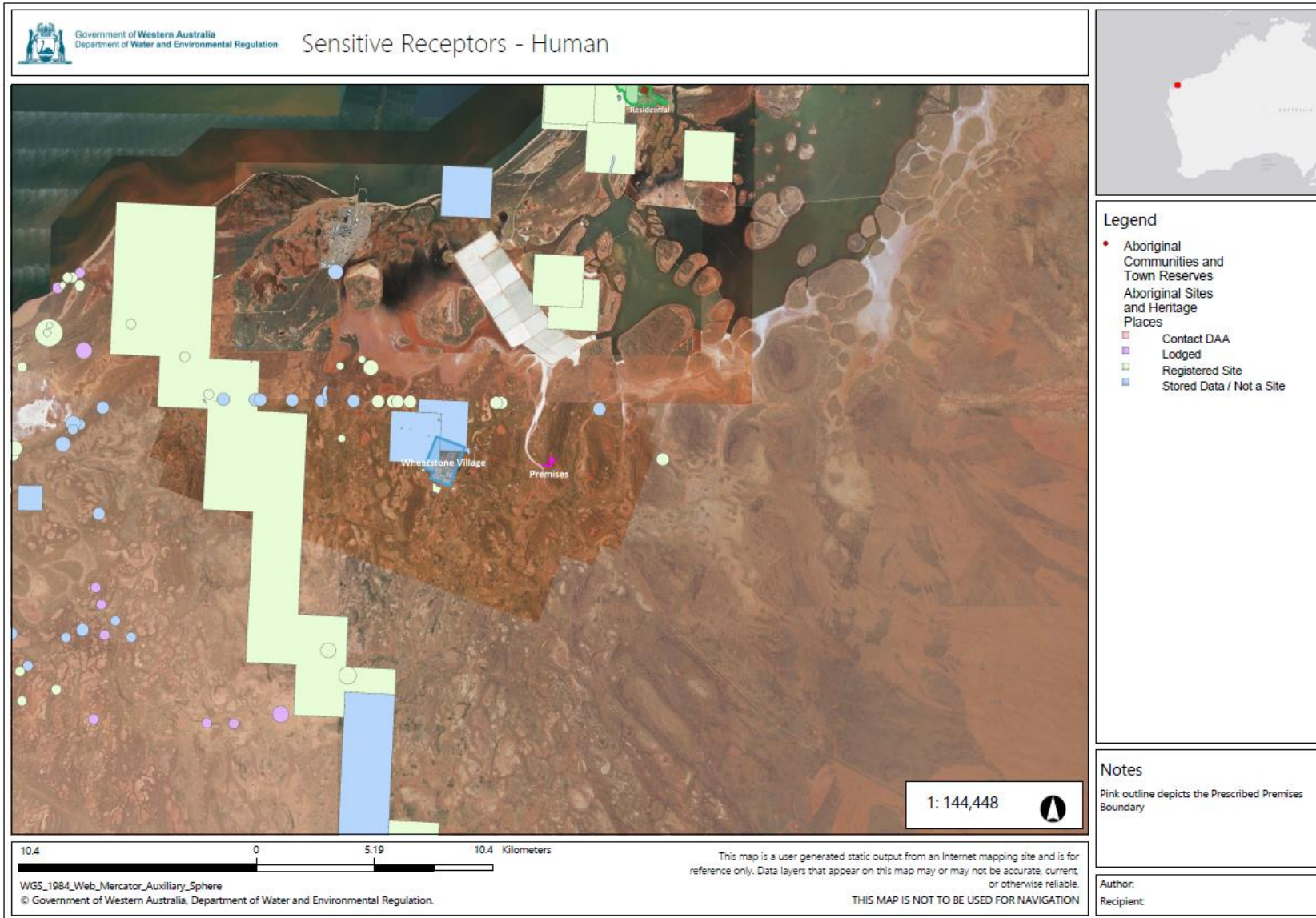


Figure 1: Distance to sensitive receptors - Human

Works Approval: W5805/2015/1

IR-T15 Amendment report template v3.0 (May 2021)

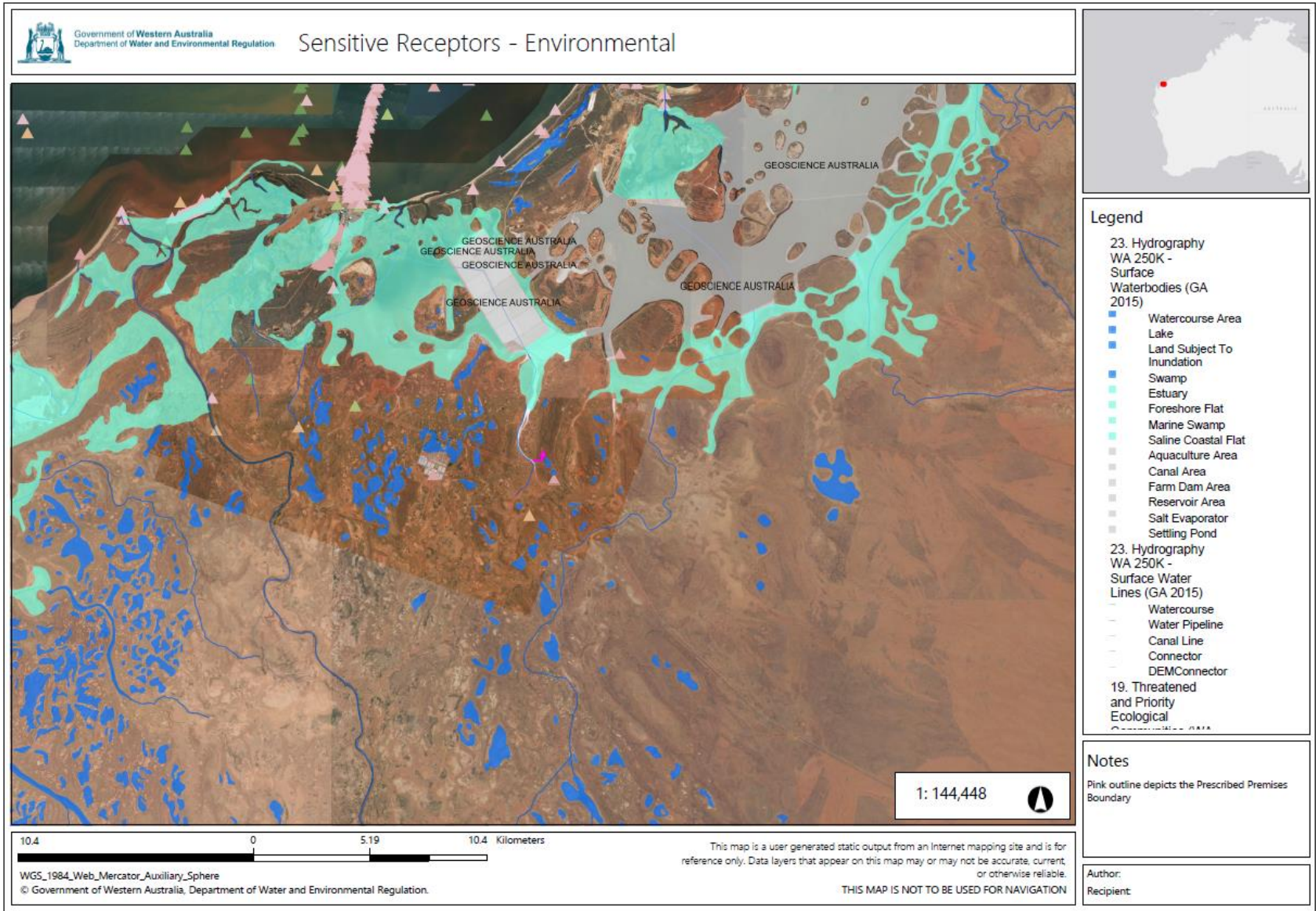


Figure 2: Distance to sensitive receptors – Environmental

Works Approval: W5805/2015/1

3.2 Risk ratings

Risk ratings have been assessed in accordance with the *Guideline: Risk Assessments* (DWER 2020) for those emission sources which are proposed to change and takes into account potential source-pathway and receptor linkages as identified in Section 3.1. Where linkages are incomplete they have not been considered further in the risk assessment.

Where the Works Approval Holder has proposed mitigation measures/controls (as detailed in Section 3.1), these have been considered when determining the final risk rating. Where the Delegated Officer considers the Works Approval Holder's proposed controls to be critical to maintaining an acceptable level of risk, these will be incorporated into the works approval as regulatory controls.

Additional regulatory controls may be imposed where the Works Approval Holder's controls are not deemed sufficient. Where this is the case the need for additional controls will be documented and justified in Table 4.

The Revised Works Approval W5805/2015/1 that accompanies this Amendment Report authorises construction and time-limited operations. The conditions in the Revised Works Approval have been determined in accordance with *Guidance Statement: Setting Conditions* (DER 2015).

A licence is required following the time-limited operational phase authorised under the works approval to authorise emissions associated with the ongoing operation of the Premises i.e. Desalination activities. A risk assessment for the operational phase has been included in this Amendment Report, however licence conditions will not be finalised until the department assesses the licence application.

Table 4. Risk assessment of potential emissions and discharges from the Premises during construction, commissioning and operation

Risk Event					Risk rating ¹ C = consequence L = likelihood	Works Approval Holder's controls sufficient?	Conditions ² of works approval	Justification for additional regulatory controls
Source/Activities	Potential emission	Potential pathways and impact	Receptors	Works Approval Holder's controls				
Construction								
Construction of water treatment plant and discharge pipeline, vehicle movements, earthworks and machinery operations.	Dust	Air/windborne pathway causing impacts to health and amenity	Wheatstone Construction Village;	Refer to Section 5.1	C = Slight L = Unlikely Low Risk	N/A	N/A	The Delegated Officer considers the distance to sensitive receptors sufficient to mitigate the risk of dust and noise.
	Noise		Threatened and priority fauna		C = Slight L = Unlikely Low Risk	N/A	N/A	
	Potentially contaminated stormwater	Overland flow causing contamination of groundwater or surface water	Threatened and priority fauna, Pilbara Surface Water Area and Groundwater Area		C = Slight L = Unlikely Low Risk	Y	Condition 2, Table 1 – Reverse Osmosis units and chemical storage.	The Delegated Officer considers the self-contained RO units and banded ballets for chemical storage is sufficient to mitigate the risk of potentially contaminated stormwater from the site.
	Hydrocarbon spills	Direct discharge to land	Pilbara Surface water Area and Groundwater Area		C = Slight L = Possible Low Risk	Y	N/A	The Delegated Officer considers the risk of hydrocarbon spills is low as no hydrocarbons will be stored on site and any machinery will be maintained.
Commissioning								

Works Approval: W5805/2015/1

Risk Event					Risk rating ¹ C = consequence L = likelihood	Works Approval Holder's controls sufficient?	Conditions ² of works approval	Justification for additional regulatory controls
Source/Activities	Potential emission	Potential pathways and impact	Receptors	Works Approval Holder's controls				
Commissioning of water treatment plant and discharge pipeline	Noise	Air/windborne pathway causing impacts to health and amenity	Threatened and priority fauna	Refer to Section 5.1	C = Slight L = Unlikely Low Risk	N/A	N/A	The Delegated Officer considers the distance to sensitive receptors sufficient to mitigate the risk of noise.
	Brine water spillage	Direct discharge to land	Native vegetation, Threatened and priority fauna, Pilbara Surface Water Area and Groundwater Area		C = Slight L = Unlikely Low Risk	N/A	N/A	The Delegated Officer considers the risk of process water spills is low due to the higher quality brine water resulting from this updated process compared to the original proposal
	Potentially contaminated stormwater	Overland flow causing contamination of groundwater or surface water	Pilbara Groundwater Area and Surface water Area		C = Slight L = Unlikely Low Risk	Y	Condition 2, Table 1 – Reverse Osmosis units and chemical storage.	The Delegated Officer considers the self-contained RO units and banded ballets for chemical storage is sufficient to mitigate the risk of potentially contaminated stormwater from the site.
	Discharge of brine to Quick Mud Creek	Direct discharge potentially contaminating groundwater and surface water	Pilbara Groundwater Area and Surface water Area		C = Slight L = Unlikely Low Risk	Y		The Delegated Officer considers the estimated improved discharge quality compared to the original works approval proposal sufficient in mitigating the risk to the receiving

Risk Event					Risk rating ¹ C = consequence L = likelihood	Works Approval Holder's controls sufficient?	Conditions ² of works approval	Justification for additional regulatory controls
Source/Activities	Potential emission	Potential pathways and impact	Receptors	Works Approval Holder's controls				
								environment.
Operation (including time-limited-operations operations)								
Operation of water treatment plant and discharge to Quick Mud Creek	Noise	Air/windborne pathway causing impacts to health and amenity	Threatened and priority fauna	Refer to Section 5.1	C = Slight L = Unlikely Low Risk	N/A	N/A	The Delegated Officer considers the distance to sensitive receptors sufficient to mitigate the risk of noise.
	Brine water spillage	Direct discharge to land	Native vegetation, Threatened and priority fauna, Pilbara Surface Water Area and Groundwater Area		C = Slight L = Unlikely Low Risk	N/A	N/A	The Delegated Officer considers the risk of process water spills is low due to the higher quality brine resulting from this updated process compared to the original proposal
	Potentially contaminated stormwater	Overland flow causing contamination of groundwater or surface water	Pilbara Groundwater Area and Surface water Area		C = Slight L = Unlikely Low Risk	Y	Condition 2, Table 1 – Reverse Osmosis units and chemical storage.	The Delegated Officer considers the self-contained RO units and banded ballets for chemical storage is sufficient to mitigate the risk of potentially contaminated stormwater from the site.
	Discharge of brine to Quick Mud Creek	Direct discharge potentially contaminating groundwater and surface water	Pilbara Groundwater Area and Surface water Area		C = Slight L = Unlikely Low Risk	Y		The Delegated Officer considers the estimated improved discharge quality compared to the original works

Risk Event					Risk rating ¹ C = consequence L = likelihood	Works Approval Holder's controls sufficient?	Conditions ² of works approval	Justification for additional regulatory controls
Source/Activities	Potential emission	Potential pathways and impact	Receptors	Works Approval Holder's controls				
								approval proposal sufficient in mitigate the risk to the receiving environment. The Delegated Officer notes that the radiological risks associated with the are managed by the Radiological Council of WA under ethe <i>Radiation Safety Act 1975</i> . The amended works approval includes a requirement for provision of evidence of approval under this Act.

Note 1: Consequence ratings, likelihood ratings and risk descriptions are detailed in the *Guideline: Risk assessments* (DWER 2020).

Note 2: Proposed Works Approval Holder's controls are depicted by standard text. **Bold and underline text** depicts additional regulatory controls imposed by department.

4. Consultation

Table5 provides a summary of the consultation undertaken by the department.

Table 5: Consultation

Consultation method	Comments received	Department response
Works Approval Holder was provided with draft amendment on 28/02/2023	Email received 07/03/2023 waiving remaining commenting period	N/A

5. Conclusion

Based on the assessment in this Amendment Report, the Delegated Officer has determined that a Revised Works Approval will be granted, subject to conditions commensurate with the determined controls and necessary for administration and reporting requirements.

5.1 Summary of amendments

Table6 provides a summary of the proposed amendments and will act as record of implemented changes. All proposed changes have been incorporated into the Revised Works Approval as part of the amendment process.

Table 6: Summary of works approval amendments

Condition no.	Proposed amendments
Cover page	Amend premises name from Onslow Water Infrastructure Upgrade Project to Onslow Borefield Removed coordinates as these indicated the old layout and are presented in schedule 1
Condition 2, Table 1	<ol style="list-style-type: none"> 1. Replaced the main treatment building, potassium permanganate building, chlorine building and callacite building with Reverse Osmosis Units and associated specifications. 2. Amend chemical storage building to chemical storage and update the associated specifications; and 3. Removed reference to hydrocarbon storage
Condition 3	Removal of reference to RSS
Condition 5, 6, and 7	Amend reference to Onslow Water Infrastructure Upgrade Project to Onslow Borefield.
Condition 9, Table 2	Amended reference to schedule 1 figure 2 to instead refer to schedule 1 figure 1. Remove 2 nd discharge point, amend reference to QMC and description to relate to the updated process.
Condition 12, Table 3	Remove 2 nd discharge point, amend monitoring point reference to QMC
Condition 13, Table 4	Amend notification requirement from 'prior to the first release of RSS into QC' to 'prior to the first discharge into QMC'
Definitions	Removal of RSS, SWRO, OWIUP, CV, Commissioning plan, and CIP

Schedule 1: Maps Figure 1 and 2	Replaced Figure 1 with a new figure indicating the new pipeline layout and coordinates. Removed Figure 2 as no longer relevant to works approval.
------------------------------------	--

References

1. Department of Environment Regulation (DER) 2015, *Guidance Statement: Setting Conditions*, Perth, Western Australia.
2. Department of Water and Environmental Regulation (DWER) 2020, *Guideline: Environmental Siting*, Perth, Western Australia.
3. DWER 2020, *Guideline: Risk Assessments*, Perth, Western Australia.

Appendix 1: Application validation summary

SECTION 1: APPLICATION SUMMARY (as updated from validation checklist)						
Application type						
Works approval	<input type="checkbox"/>					
Licence	<input type="checkbox"/>	Relevant works approval number:	Licence	<input type="checkbox"/>	Relevant works approval number:	
		Has the works approval been complied with?			Yes <input type="checkbox"/> No <input type="checkbox"/>	
		Has time limited operations under the works approval demonstrated acceptable operations?			Yes <input type="checkbox"/> No <input type="checkbox"/> N/A <input type="checkbox"/>	
		Environmental Compliance Report / Critical Containment Infrastructure Report submitted?			Yes <input type="checkbox"/> No <input type="checkbox"/>	
		Date Report received:				
Renewal	<input type="checkbox"/>	Current licence number:	Renewal			
Amendment to works approval	<input checked="" type="checkbox"/>	Current works approval number:	Amendment to works approval			
Amendment to licence	<input type="checkbox"/>	Current licence number:	Amendment to licence			
		Relevant works approval number:		N/A	Relevant works approval number:	
Registration	<input type="checkbox"/>	Current works approval number:	Registration	<input type="checkbox"/>	Current works approval number:	
Date application received		20/12/22				
Applicant and Premises details						
Applicant name/s (full legal name/s)		Yangibana Pty Limited, Trading as Hastings Technological Metals Limited				
Premises name		Onslow Borefield (change from Onslow Water Infrastructure upgrade project)				

Premises location	<p>Lot 556 on Plan 74894 within coordinates 301622E 7590552N, 302122E 7590552N, 302122E 7590244N, 301622 7590244.</p> <p>Lot 557 on Plan 74894 within coordinates 301622E 7590147N, 301622E 7590244N, 302122E 7590244N, 302122E 7590147N.</p> <p>Lot 561 on Plan 71346 within coordinates, 300941E 7590244N, 301622E 7590244N, 301622E 7590147N, 300925E 7590144N, 293564E 7592581N, 293375E 7592749N.</p>	
Local Government Authority	Shire of Ashburton	
Application documents		
HPCM file reference number:	DER2015/000034-1~3	
Key application documents (additional to application form):	<p><i>Premises Map</i></p> <p><i>Supporting Document</i></p> <p><i>General Layout</i></p> <p><i>Premises map with coordinates</i></p>	
Scope of application/assessment		
Summary of proposed activities or changes to existing operations.	<p><i>Works approval amendment</i></p> <p>Changes to infrastructure to be constructed for the purpose of desalination.</p> <p>Changes to premises name, pipeline layout (premises boundary), discharge point (appears to be applying for only one discharge point, not two).</p>	
Category number/s (activities that cause the premises to become prescribed premises)		
Table 1: Prescribed premises categories		
Prescribed premises category and description	Assessed production or design capacity	
Category 85B: Water desalination plant: premises at which salt is extracted from water if waste water is discharged onto land or into waters (other than marine waters)	0.74 gigalitres per Annual Period	
Legislative context and other approvals		
Has the applicant referred, or do they intend to refer, their proposal to the EPA under Part IV of the EP Act as a significant proposal?	Yes <input type="checkbox"/> No <input checked="" type="checkbox"/>	

Does the applicant hold any existing Part IV Ministerial Statements relevant to the application?	Yes <input type="checkbox"/> No <input checked="" type="checkbox"/>	Ministerial statement No: EPA Report No:
Has the proposal been referred and/or assessed under the EPBC Act?	Yes <input type="checkbox"/> No <input checked="" type="checkbox"/>	Reference No:
Has the applicant demonstrated occupancy (proof of occupier status)?	Yes <input type="checkbox"/> No <input checked="" type="checkbox"/>	
Has the applicant obtained all relevant planning approvals?	Yes <input type="checkbox"/> No <input type="checkbox"/> N/A <input checked="" type="checkbox"/>	Approval: Expiry date: If N/A explain why?
Has the applicant applied for, or have an existing EP Act clearing permit in relation to this proposal?	Yes <input checked="" type="checkbox"/> No <input type="checkbox"/>	CPS No: 9818/1
Has the applicant applied for, or have an existing CAWS Act clearing licence in relation to this proposal?	Yes <input type="checkbox"/> No <input checked="" type="checkbox"/>	Application reference No: N/A Licence/permit No: N/A
Has the applicant applied for, or have an existing RIWI Act licence or permit in relation to this proposal?	Yes <input checked="" type="checkbox"/> No <input type="checkbox"/>	Licence/permit No: GWL207961(1)
Does the proposal involve a discharge of waste into a designated area (as defined in section 57 of the EP Act)?	Yes <input checked="" type="checkbox"/> No <input type="checkbox"/>	Name: Pilbara Surface Water Area; Pilbara Groundwater area Type: Proclaimed Groundwater Area/Surface Water Area Has Regulatory Services (Water) been consulted? Yes <input type="checkbox"/> No <input type="checkbox"/> N/A <input checked="" type="checkbox"/> Regional office: North West
Is the Premises situated in a Public Drinking Water Source Area (PDWSA)?	Yes <input type="checkbox"/> No <input checked="" type="checkbox"/>	Name: N/A Priority: N/A

<p>Is the Premises subject to any other Acts or subsidiary regulations (e.g. <i>Dangerous Goods Safety Act 2004, Environmental Protection (Controlled Waste) Regulations 2004, State Agreement Act xxxx</i>)</p>	<p>Yes <input checked="" type="checkbox"/> No <input type="checkbox"/></p>	
<p>Is the Premises within an Environmental Protection Policy (EPP) Area?</p>	<p>Yes <input type="checkbox"/> No <input checked="" type="checkbox"/></p>	
<p>Is the Premises subject to any EPP requirements?</p>	<p>Yes <input type="checkbox"/> No <input checked="" type="checkbox"/></p>	
<p>Is the Premises a known or suspected contaminated site under the <i>Contaminated Sites Act 2003</i>?</p>	<p>Yes <input type="checkbox"/> No <input type="checkbox"/></p>	<p>N/A</p>