



## Application for Works Approval Amendment

### Part V Division 3 of the *Environmental Protection Act 1986*

---

<b>Works Approval Number</b>	W6303/2019/1
<b>Works Approval Holder</b>	FQM Australia Nickel Pty Ltd
<b>ACN</b>	135 761 465
<b>File Number</b>	DER2019/000506~1
<b>Premises</b>	<p>Ravensthorpe Nickel Operation Lot 1269 South Coast Highway Ravensthorpe WA 6346</p> <p>Legal description - Mining tenements G74/8, L74/54, M74/108, M74/142, M74/144, M74/167 and M74/168</p> <p>As defined by the Premises maps attached to the Revised Works Approval</p>
<b>Date of Report</b>	15 March 2021
<b>Decision</b>	Revised works approval granted

**A/MANAGER, RESOURCE INDUSTRIES  
REGULATORY SERVICES**

an officer delegated under section 20 of the *Environmental Protection Act 1986* (WA)

# Table of Contents

<b>1. Decision summary .....</b>	<b>1</b>
<b>2. Scope of assessment .....</b>	<b>1</b>
2.1 Regulatory framework .....	1
2.2 Application summary .....	1
2.3 Approval under Part IV of the EP Act.....	1
2.4 Other relevant approvals .....	2
2.5 Works Approval and Licence history.....	2
<b>3. Risk assessment.....</b>	<b>3</b>
3.1 Source-pathways and receptors .....	3
3.1.1 Emissions and controls .....	3
3.1.2 Receptors.....	4
3.2 Risk ratings.....	7
<b>4. Consultation .....</b>	<b>10</b>
<b>5. Conclusion .....</b>	<b>10</b>
5.1 Summary of amendments.....	10
<b>References.....</b>	<b>11</b>
<b>Appendix 1: Application validation summary.....</b>	<b>12</b>
Table 1: Approved Prescribed Premises Category .....	1
Table 2: Works approval and licence history .....	2
Table 3: Works Approval Holder controls .....	4
Table 4: Sensitive human and environmental receptors and distance from prescribed activity .	5
Table 5. Risk assessment of potential emissions and discharges from the Premises during time limited operations .....	7
Table 6: Consultation .....	10
Table 7: Summary of works approval amendments.....	10
Figure 1: Distance to sensitive receptors.....	6

# 1. Decision summary

Works Approval W6303/2019/1 is held by FQM Australia Nickel Pty Ltd (FQM) (Works Approval Holder) for the Ravensthorpe Nickel Operations (RNO), (the Premises), located at Lot 1269 South Coast Highway, Ravensthorpe.

This Amendment Report documents the assessment of potential risks to the environment and public health from proposed changes to the emissions and discharges during the construction and operation of the Premises. As a result of this assessment, Revised Works Approval W6303/2019/1 has been granted.

The Revised Works Approval supersedes any existing Works Approval granted in relation to the Premises. The Revised Works Approval has been granted in its existing format with existing conditions re-evaluated for overall emission risk.

## 2. Scope of assessment

### 2.1 Regulatory framework

In completing the assessment documented in this Amendment Report, the department has considered and given due regard to its Regulatory Framework and relevant policy documents which are available at <https://dwer.wa.gov.au/regulatory-documents>.

### 2.2 Application summary

On 24 November 2020, the Works Approval Holder applied to the department to amend Works Approval W6303/2019/1 under section 59 and 59B of the *Environmental Protection Act 1986* (EP Act). The following amendment is sought:

- Undertake time limited operations once construction of the infrastructure relating to Category 5: Processing or beneficiation of metallic or non-metallic ore at the Shoe Maker Levy mine site has been completed and the Environmental Compliance Report has been submitted by the Applicant to the CEO as per current condition 2.

This amendment will allow the new infrastructure to be commissioned and commence time limited operations whilst an amendment to RNO licence L8008/2004/3 is being determined and will include the new infrastructure plus any new regulatory controls.

Table 1 below outlines the existing Category description which remains unchanged by this amendment to the works approval.

**Table 1: Approved Prescribed Premises Category**

Category	Current design capacity	Revised design capacity
<i>Category 5: Processing or beneficiation of metallic or non-metallic ore</i>	<i>21,500,000 tonnes per annum with maximum crusher design capacity of 2,500 tonnes per hour.</i>	<i>21,500,000 tonnes per annum (unchanged).</i>

### 2.3 Approval under Part IV of the EP Act

RNO project was authorised by the Minister for Environment (Minister) under Part IV of the EP Act upon issue of Ministerial Statement (MS) 509 on 4 June 1999. The MS 509 was for the mining and processing of up to 4 million tonnes per annum of nickel ore from Bandalup Hill producing 30,000 tonnes per annum of nickel metal and 2,200 tonnes per annum of cobalt sulfide over a period of 20 years.

Development of the RNO project commenced in 1998 under the ownership of Comet Resources. In 2002, BHP Billiton operated the RNO project up until 2009. In February 2010, FQMAN acquired RNO project from BHP Billiton.

MS 509 was superseded by MS 633 on 5 September 2003 to include the three ore bodies (Halleys, Hale-Bopp and Shoemaker-Levy) and increase the throughput of mining and processing ore to 10 million tonnes per year. MS 633 includes regulatory conditions relevant to this works approval and the licence (L8008/2004/3) for the premises.

Conditions of MS 633 include the following:

- Surface Water Management and monitoring plan,
- Groundwater Management and monitoring plan,
- Dust Management Plan,
- Waste Management and Waste Minimisation Plan,
- Environmental Management Plan,
- Demonstrated compliance with all the plans,
- Facilitate stakeholder groups such as the Ravensthorpe Nickel Project Community Liaison Committee and the Jerdacuttup RNO Working Group,
- Maintain a community complaints register, and,
- Demonstrate compliance to MS 633 conditions.

## 2.4 Other relevant approvals

The proposed conveyor crosses the South Coast Highway within the infrastructure corridor between Shoemaker-Levy and the main RNO processing site. Impacts from construction of the South Coast Highway crossover are assessed by Main Roads Western Australia (MRWA) under assessment reference number D19#1011926.

FQM submitted a mining proposal to Department of Mines, Industry Regulation and Safety (DMIRS) on 11 October 2019 to assess the establishment and rehabilitation of the Shoemaker-Levy mine and associated infrastructure, including the conveyor corridor. The application was approved on 2 June 2020 and referenced as Registration ID 83089. DMIRS have also assessed the native vegetation clearing as part of the mining proposal.

Federal assessment of the Shoemaker-Levy project has been completed under the *Environmental Protection and Biodiversity Conservation Act 1999* (EPBC Act). Application 2001/172 was approved in December 2003 and is effective until December 2045.

## 2.5 Works Approval and Licence history

Table 2 summarises the works approval and licence history for the RNO Premises. Once the construction and commissioning of W6303/2019/1 has been completed and compliance documents have been submitted to the CEO, the Applicant will need to apply to amend L8008/2004/3 to incorporate the infrastructure of the Shoemaker-Levy mine site.

**Table 2: Works approval and licence history**

Instrument	Issued	Nature and extent of works approval, licence or amendment
W3911/2004/1	5/04/2004	Works approval to establish RNO
R1670/2004/1	25/08/2004	Registration for a category 85: sewage facility and category 89: putrescible landfill site
L8008/2004/1	14/05/2005	Licence issue for RNO
W4397/2007/1	7/02/2008	Works approval to establish evaporation ponds

Instrument	Issued	Nature and extent of works approval, licence or amendment
W4452/2008/1	20/10/2008	Works approval to upgrade beneficiation plant
W4463/2008/1	21/11/2008	Works approval to modify evaporation ponds
L8008/2004/2	14/05/2010	Licence re-issue
W4715/2010/1	2/08/2010	Works approval for the construction of two new buffer ponds
W4767/2010/1	25/10/2010	Works approval to upgrade the existing tailings storage facility (TSF)
W4873/2011/1	21/03/2011	Works approval for the construction of the sands rejects storage facility
W4937/2011/1	30/05/2011	Works approval for the installation of diesel-powered generators
W5364/2013/1	18/03/2013	Works approval for TSF expansion
L8008/2004/3	14/05/2013	Licence re-issue
W5754/2014/1	26/01/2015	Works approval for the construction of Evaporation Pond 20
W6303/2019/1	08/04/2020	Works approval for the establishment of the Shoemaker-Levy site and associated infrastructure.
W6303/2019/1	15/03/2021	Amendment to Works Approval to increase capacity to 2,900,000 tonnes per annum and undertake time limited operations following construction of infrastructure.

The obligations of the Works Approval Holder have not changed in amending the works approval. The department has undertaken the additional risk assessment for the Premises and has considered existing Licences and Amendment Notices related to this assessment.

Consolidation of conditions as they relate to this Revised Works Approval are detailed in Section 5.1 Table 7. The previously issued decision report to this works approval will remain on the department's website for future reference and will act as a record of the department's decision making.

### 3. Risk assessment

The department assesses the risks of emissions from prescribed premises and identifies the potential source, pathway and impact to receptors in accordance with the *Guidance Statement: Risk Assessments* (DER 2017).

To establish a Risk Event there must be an emission, a receptor which may be exposed to that emission through an identified actual or likely pathway, and a potential adverse effect to the receptor from exposure to that emission.

#### 3.1 Source-pathways and receptors

##### 3.1.1 Emissions and controls

The key emissions and associated actual or likely pathway during premises time limited operation have been considered in this Amendment Report are detailed in Table 3 below. Table 3 also details the proposed control measures the Works Approval Holder has proposed to assist in controlling these emissions, where necessary.

**Table 3: Works Approval Holder controls**

Emission	Sources	Potential pathways	Proposed controls
Dust	Operation of crushing facility  Operation of overland conveyor;  ROM mine stockpiles.	Air/windborne pathway	Managed under Part IV Ministerial Statement MS633 – Commitment 27 and 28, Dust Management Plan (DMP).  Maximum Ground Level Concentration for PM10 particles from the Shoemaker-Levy project over a 1 day averaging period outside of the project's leases was modelled to be 5.5 µg/m3.
Noise	Operation of crushing facility  Operation of overland conveyor  ROM mine stockpiles	Air/windborne pathway	Noise will be managed to comply with Part 7 of the Mines Safety and Inspection Regulations 1995 (i.e. a peak noise limit of 140 dB(lin) and 8 hour noise exposure of 85 dB(A)) as required by DMIRS.  Modelled noise emissions at the (now demolished) "Gnamma" residence (2.5-3 km west of the proposed Shoemaker-Levy crushing facility) were 28 dB(A) at LA1 and LA10 (Herring Storer Acoustics, 2000).
Stormwater containing hydrocarbons by spills and leaks, and sediment from earth moving activities.	Bulk fuel facility; Washdown facility; Workshop facility.	Soils and vegetation at site of spill and along flow path of contaminated stormwater.	Managed under Part IV Ministerial Statement MS633 – Commitment 7, Surface Water Management and Monitoring Plan (SWMMP).  All fuel tanks will be self-bunded and designed to meet AS1940:2016 and shall hold a dangerous goods authorisation.  All hydrocarbon wastes are to be contained within concrete bunded facilities.  Spill kits to be installed and maintained at the facility, and spills to be controlled, contained, and cleaned up as soon as practicable.  An incident reporting system is in place to identify recurring issues.
Saline water	Saline water pipeline	Soils and vegetation at site of spill and along flow path of saline water.	Managed under Part IV Ministerial Statement MS633 – Commitment 7, Surface Water Management and Monitoring Plan (SWMMP).  The saline water pipeline is fitted with flow detection devices as well as alarm triggers if flow pressure drops.  Spills will be contained in V drains and roadside bunds and cleaned-up immediately.  An incident reporting system is in place to identify recurring issues with pipeline integrity.

### 3.1.2 Receptors

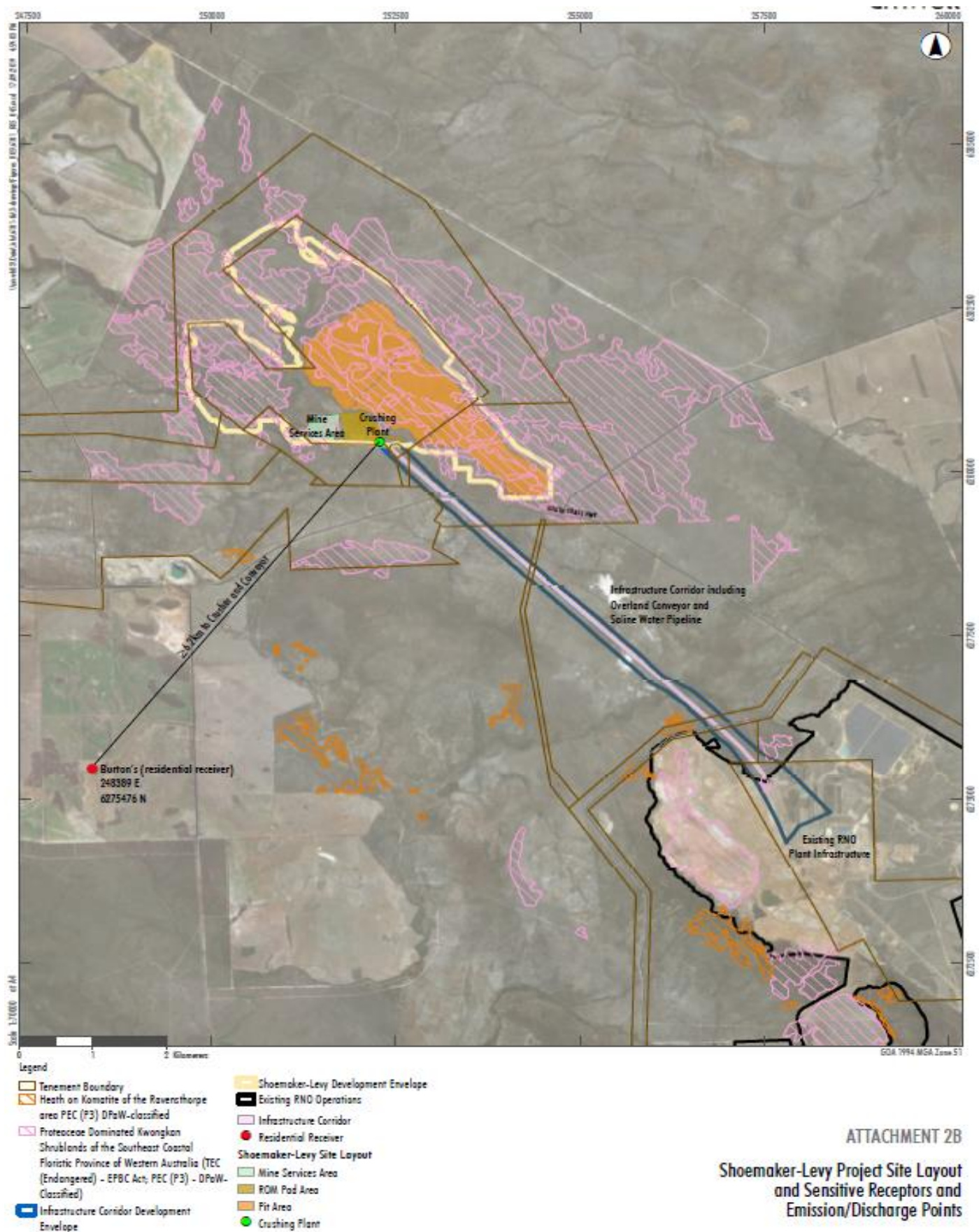
In accordance with the *Guidance Statement: Risk Assessment* (DER 2017), the Delegated Officer has excluded employees, visitors, and contractors of the Works Approval Holder's from its assessment. Protection of these parties often involves different exposure risks and prevention strategies provided for under state legislation.

Table 4 below provides a summary of potential human and environmental receptors that may be impacted because of activities upon or emission and discharges from the prescribed premises (*Guidance Statement: Environmental Siting* (DER 2016)).

**Table 4: Sensitive human and environmental receptors and distance from prescribed activity**

Human receptors	Distance from prescribed activity
<i>Residential Premises</i>	<i>Located greater than 5.8km south west of crusher location</i>
Environmental receptors	Distance from prescribed activity
<i>Threatened Ecological Communities and Priority Ecological Communities</i>	<i>Premises within priority 3 proteaceae dominated Kwongkan shrub land.</i>
<i>Groundwater</i>	<i>Exploratory drilling program at Shoemaker Levy mine encountered groundwater at approximately 100m below ground level.</i>
<i>Bandalup Creek</i>	<i>Located 8km south west of RNO project site</i>
<i>Jerdacuttup River</i>	<p><i>Located ~ 30km south east of RNO project site.</i></p> <p><i>The Jerdacuttup River is a priority river system because much of its foreshore vegetation is rated “pristine”.</i></p> <p><i>The river system and lakes are also highly valued for their Aboriginal Heritage and community recreation.</i></p> <p><i>The lakes associated with the Jerdacuttup River are important to many migratory bird species, including trans-equatorial migrants protected under the Japan-Australia Migratory Bird Agreement treaty.</i></p>
Biological Component	Distance from prescribed activity
<i>Threatened/Priority Flora</i>	<ul style="list-style-type: none"> <li><i>Kunzea similis - this species is known from only two populations, with over 99.5% of the known plants of this species occurring on Bandalup Hill, which is the site of the Halleys and Hale-Bopp orebodies. Listed as “Critically Endangered” under the Biodiversity Conservation Act 2016 (Western Australia) 2018.</i></li> <li><i>Eucalyptus purpurata – This species is known to occur in four locations on the eastern flank of the Hale-Bopp orebody. It is classified Threatened (Declared Rare Flora) – Extant Taxa.</i></li> </ul> <p><i>In addition, there are 25 other flora species of conservation significance within the RNO project footprint. For these species, the impacts are deemed to be of negligible to medium significance either due to their wider distribution, lack of direct impacts or inclusion within the conservation area (EPA Bulletin, April 2003).</i></p>
<i>Threatened/Priority Fauna</i>	<p><i>A requirement of MS 633 was to develop and implement a Fauna Management Plan (FMP). This was finalised in 2004. The FMP identified the following eight (8) threatened or priority fauna within the RNO operating footprint:</i></p> <ul style="list-style-type: none"> <li><i>Mallee-fowl – (Schedule 1)</i></li> <li><i>Carnaby’s Cockatoo - (Schedule 1)</i></li> <li><i>Western Whipbird - (Schedule 1)</i></li> <li><i>Square-tailed Kite – (Priority 4)</i></li> <li><i>Heath Mouse - (Schedule 1)</i></li> <li><i>Western Mouse – (Priority 4)</i></li> <li><i>Western Brush Wallaby – (Priority 4)</i></li> <li><i>Southern Brown Bandicoot – (Priority 4)</i></li> </ul>





ATTACHMENT 2B  
Shoemaker-Levy Project Site Layout  
and Sensitive Receptors and  
Emission/Discharge Points



## 3.2 Risk ratings

Risk ratings have been assessed in accordance with the *Guidance Statement: Risk Assessments* (DER 2017) for those emission sources which are proposed to change and takes into account potential source-pathway and receptor linkages as identified in Section 3.1. Where linkages are in-complete they have not been considered further in the risk assessment.

Where the Works Approval Holder has proposed mitigation measures/controls (as detailed in Section 3.1), these have been considered when determining the final risk rating. Where the Delegated Officer considers the Works Approval Holder's proposed controls to be critical to maintaining an acceptable level of risk, these will be incorporated into the works approval as regulatory controls.

Additional regulatory controls may be imposed where the Works Approval Holder's controls are not deemed sufficient. Where this is the case the need for additional controls will be documented and justified in Table 5.

The Revised Works Approval W6303/2019/1 that accompanies this Amendment Report authorises construction and time-limited operations. The conditions in the Revised Works Approval have been determined in accordance with *Guidance Statement: Setting Conditions* (DER 2015).

An amendment to licence L8008/2004/3 is required following submission of the Environmental Compliance Report or during the time-limited operational phase authorised by this works approval to permit emissions associated with the ongoing operation of the Premises i.e. crushing activities. A risk assessment for the operational phase has been included in this Amendment Report, however licence conditions will not be finalised until the department assesses the licence application.

**Table 5. Risk assessment of potential emissions and discharges from the Premises during time limited operations**

Risk Event					Risk rating <sup>1</sup> C = consequence L = likelihood	Works Approval Holder's controls sufficient?	Conditions <sup>2</sup> of works approval	Justification for additional regulatory controls
Source/Activities	Potential emission	Potential pathways and impact	Receptors	Works Approval Holder's controls				
Commissioning								
Commissioning of crushing facility and overland conveyor & saline water pipeline.	Dust	Air/windborne pathway causing impacts to health and amenity	Resident greater than 5.8km from crusher.  Flora in mine boundary	Refer to Section 3.1.1	No human receptors.  Vegetation clearing approved by DMIRS and MS633.	Yes	N/A	Managed under Part IV Ministerial Statement MS633 – Commitment 27 and 28, Dust Management Plan (DMP).  Particulate modelling submitted with initial application meets air emission standards

Risk Event					Risk rating <sup>1</sup> C = consequence L = likelihood	Works Approval Holder's controls sufficient?	Conditions <sup>2</sup> of works approval	Justification for additional regulatory controls
Source/Activities	Potential emission	Potential pathways and impact	Receptors	Works Approval Holder's controls				
Operation including time-limited-operations								
Operation of crushing facility;  Operation of overland conveyor;  ROM mine stockpiles.	Dust	Air/windborne pathway causing impacts to health and amenity	Resident greater than 5.8km from crusher.  Flora and Fauna in mine boundary	Refer to Section 3.1.1	No human receptors.  Flora and Fauna management controlled by MS633 conditions.	Yes	Conditions 4, 5 and 6	Correct production rate to reflect 24 hour operations 365 days a year at 2,500 tonnes per hour.  <b><u>Include Time Limited Operations (TLO) conditions 4, 5 and 6,</u></b> to allow TLO to occur post submission of construction compliance documents, specifying authorised time period for TLO and setting requirement for final TLO report to be submitted. TLO report will inform future risk assessments / licence amendment application and associated conditions.
	Noise	Air/windborne pathway causing impacts to health and amenity	Resident greater than 5.8km from crusher.	Refer to Section 3.1.1	No human receptors  Mine site noise will be managed by DMIRS approval under the provisions of Mining Act.	Yes	Conditions 4, 5 and 6	
Bulk fuel facility;  Washdown facility;  Workshop facility.	Sediment and hydrocarbon laden stormwater	Overland runoff potentially causing ecosystem disturbance or impacting surface water quality	Seasonal minor creeks 8km from operations  Threatened fauna in mine boundary	Refer to Section 3.1.1	Surface water managed under Part IV Ministerial Statement MS633 – Commitment 7, Surface Water Management and Monitoring Plan (SWMMP).	Yes	Conditions 4, 5 and 6	

Risk Event					Risk rating <sup>1</sup> C = consequence L = likelihood	Works Approval Holder's controls sufficient?	Conditions <sup>2</sup> of works approval	Justification for additional regulatory controls
Source/Activities	Potential emission	Potential pathways and impact	Receptors	Works Approval Holder's controls				
Saline water pipeline	Saline water	Overland runoff potentially causing ecosystem disturbance or impacting surface water quality	Seasonal minor creeks 8km from operations  Threatened fauna in mine boundary	Refer to Section 3.1.1	Surface water managed under Part IV Ministerial Statement MS633 – Commitment 7, Surface Water Management and Monitoring Plan (SWMMP).  <u>No overall risk</u>	Yes	Conditions 4, 5 and 6	<b><u>TLO conditions 4, 5 and 6</u></b> to be applied to allow sufficient time for amendment to licence L8008/2004/3 to be processed to include new infrastructure authorised under this works approval.

Note 1: Consequence ratings, likelihood ratings and risk descriptions are detailed in the *Guidance Statement: Risk Assessments* (DER 2017).

Note 2: Proposed Works Approval Holder's controls are depicted by standard text. **Bold and underline text** depicts additional regulatory controls imposed by department.

## 4. Consultation

Table 6 provides a summary of the consultation undertaken by the department. The application was not advertised on the departments website.

**Table 6: Consultation**

Consultation method	Comments received	Department response
Local Government Authority advised of proposal (4/12/2020)	Submission received on 10 December with no objection to the amendment of W6303.	N/A
Department of Mines, Industry Regulation and Safety advised of proposal (4/12/2020)	No submission received	N/A
Main Roads WA advised of proposal (11/12/2020)	No submission received	N/A
Works Approval Holder was provided with draft revised works approval (2/02/2021)	Period extended till 5 March 2021 upon which the works approval holder had no comments and waived the consultation and proceed to issue the revised works approval.	N/A

## 5. Conclusion

Based on the assessment completed in this Amendment Report, the Delegated Officer has determined that a Revised Works Approval will be granted, subject to conditions commensurate with the determined controls and necessary for administration and reporting requirements.

### 5.1 Summary of amendments

Table 7 provides a summary of the proposed amendments and will act as record of implemented changes. All proposed changes have been incorporated into the Revised Works Approval as part of the amendment process.

**Table 7: Summary of works approval amendments**

Condition no.	Proposed amendments
Cover Page	Change File Number from DER2018/001042 to DER2019/000506~1.
Definitions	Include new definitions for DMIRS, Environmental Compliance Report, time limited operations and MRWA
4	Include new condition authorising time limited operations to commence once Environment Compliance Report required by condition 2 has been submitted to the CEO.
5	Include new condition authorising the period of time that time limited operations can occur whilst amendment to licence L8008/2004/3 is being assessed.
6	Include new condition requiring a final report to be submitted to the CEO once time limited operations have been completed

## References

1. Licence L8008/2004/3, *FQM Australia Nickel Pty Ltd*, DWER issued 1 September 2016.
2. Works Approval W6303/2019/1, *FQM Australia Nickel Pty Ltd*, DWER issued 19 August 2019.
3. Decision Report W6303/2019/1, *FQM Australia Nickel Pty Ltd*, DWER date 8 April 2020
4. Shoemaker Levy Works Approval Application; *FQM Australia Nickel Pty Ltd*, DWER record DWERDT202596
5. Shoemaker Levy Works Approval supporting documents, *FQM Australia, Nickel Pty Ltd*, DWER record A1826774
6. Works Approval W6303/2019/1 Amendment Application, *FQM Australia Nickel Pty Ltd*, DWER record A1958299 & DWERDT373832
7. Amendment Application supporting documents, *FQM Australia Nickel Pty Ltd*, DWER records A1958301, A1957782, A1963853 & A1963852
8. Email from FQM explaining construction timeframes for time limited operation to commence, *FQM Australia Nickel Pty Ltd*, DWER record A1963851
9. DER October 2015, *Guidance Statement: Setting Conditions*, Perth, Western Australia.
10. DER August 2016, *Guidance Statement: Licence Duration*, Perth, Western Australia.
11. DER February 2017, *Guidance Statement: Risk Assessments*, Perth, Western Australia.
12. DWER June 2019, *Guideline: Decision Making*, Perth, Western Australia
13. DWER June 2019, *Guideline: Industry Regulation Guide to Licensing*, Joondalup, Western Australia.
14. DWER 22 April 2020, *Work Instruction: Licensing COVID*, Joondalup, Western Australia.
15. Environmental Protection Authority (EPA) April 2003, Section 46 Report and Recommendation Bulletin 1093, *Ravensthorpe Nickel Operations Pty Ltd*, Perth, WA.
16. Minister for Environment 5 September 2003, Statement number 633, Statement to Amend Conditions, *Ravensthorpe Nickel Project, Bandalup Hill Shire of Ravensthorpe*, Perth Western Australia.
17. Minister for Environment 5 September 2003, Statement number 633, Statement to Amend Conditions, *Ravensthorpe Nickel Project, Bandalup Hill Shire of Ravensthorpe*, Perth Western Australia.



## Appendix 1: Application validation summary

SECTION 1: APPLICATION SUMMARY			
<b>Application type</b>			
Amendment to works approval	<input checked="" type="checkbox"/>	Current works approval number:	W6303/2019/1 issued on 19 August 2020
Date application received		24 November 2020	
<b>Applicant and Premises details</b>			
Applicant name/s (full legal name/s)		FQM Australia Nickel Pty Ltd	
Premises name		Ravensthorpe Nickel Operation	
Premises location		G74/8, L74/54, M74/108, M74/142, M74/144, M74/167 & M74/168 – known as the Shoemaker Levy deposit	
Local Government Authority		Shire of Ravensthorpe	
<b>Application documents</b>			
HPCM file reference number:		DER2019/000506-1 and DER2018/001042	
Key application documents (additional to application form):		<i>Cover letter plus copy of original works approval and decision report</i>	
<b>Scope of application/assessment</b>			
Summary of proposed activities or changes to existing operations.		<p><i>An amendment to works approval (WA) to include time limited operations following construction to allow processing time for amendment to L8008 be completed to include new infrastructure and operating conditions.</i></p> <p><i>There is not change proposed to infrastructure, emissions, design capacity or timeframes. Construction will commence March 2021 with WA compliance report expected around June 2021.</i></p>	
<b>Category number/s (activities that cause the premises to become prescribed premises)</b>			
<b>Table 1: Prescribed premises categories</b>			
Prescribed premises category and description	Assessed production or design capacity	Proposed change of production or design capacity	
Category 5: Processing or beneficiation of metallic or non-metallic ore	21,500,000 tonnes per annum.	No change proposed	
Category 73: Bulk storage of chemicals.	1000 m3 in aggregate	No change proposed	
<b>Legislative context and other approvals</b>			
Has the applicant referred, or do they intend to refer, their proposal to the EPA under Part IV of the EP Act as a significant proposal?	Yes <input checked="" type="checkbox"/> No <input type="checkbox"/>	Assessed under Part IV <input checked="" type="checkbox"/> MS633 issued on 5/9/2003	

Does the applicant hold any existing Part IV Ministerial Statements relevant to the application?	Yes <input checked="" type="checkbox"/> No <input type="checkbox"/>	Ministerial statement No: 633 EPA Report No: 1093
Has the proposal been referred and/or assessed under the EPBC Act?	Yes <input checked="" type="checkbox"/> No <input type="checkbox"/>	Reference No: EPBC 2001/172 Expires in December 2045
Has the applicant demonstrated occupancy (proof of occupier status)?	Yes <input checked="" type="checkbox"/> No <input type="checkbox"/>	General lease <input checked="" type="checkbox"/> Expiry: Mining lease / tenement <input checked="" type="checkbox"/> Expiry: 2043
Has the applicant obtained all relevant planning approvals?	Yes <input type="checkbox"/> No <input type="checkbox"/> N/A <input checked="" type="checkbox"/>	A mining proposal so no planning approval required
Has the applicant applied for, or have an existing EP Act clearing permit in relation to this proposal?	Yes <input type="checkbox"/> No <input checked="" type="checkbox"/>	Exempted by MS633.
Has the applicant applied for, or have an existing CAWS Act clearing licence in relation to this proposal?	Yes <input type="checkbox"/> No <input checked="" type="checkbox"/>	Exempted by MS633.
Has the applicant applied for, or have an existing RIWI Act licence or permit in relation to this proposal?	Yes <input type="checkbox"/> No <input checked="" type="checkbox"/>	Licence / permit not required.
Does the proposal involve a discharge of waste into a designated area (as defined in section 57 of the EP Act)?	Yes <input type="checkbox"/> No <input checked="" type="checkbox"/>	Premises not located in designated area.
Is the Premises situated in a Public Drinking Water Source Area (PDWSA)?	Yes <input type="checkbox"/> No <input checked="" type="checkbox"/>	Premises not located in designated area.
Is the Premises subject to any other Acts or subsidiary regulations (e.g. <i>Dangerous Goods Safety Act 2004</i> , <i>Environmental Protection (Controlled Waste) Regulations 2004</i> , <i>State Agreement Act xxxx</i> )	Yes <input checked="" type="checkbox"/> No <input type="checkbox"/>	Mining Proposal submitted 11 October 2019 SC H'way crossover assessed by MRWA Ref D19#1011926
Is the Premises within an Environmental Protection Policy (EPP) Area?	Yes <input type="checkbox"/> No <input checked="" type="checkbox"/>	Premises not located in EPP area.
Is the Premises a known or suspected contaminated site under the <i>Contaminated Sites Act 2003</i> ?	Yes <input checked="" type="checkbox"/> No <input type="checkbox"/>	Classification: possibly contaminated – investigation required (PC-IR) Date of classification: 2010