



## Application for Works Approval

### Part V Division 3 of the *Environmental Protection Act 1986*

---

<b>Works Approval Number</b>	W6529/2021/1
<b>Applicant</b>	IB Operations Pty Ltd
<b>ACN</b>	165 513 557
<b>File Number</b>	DER2021/000134
<b>Premises</b>	North Star Magnetite Project Marble Bar WA 6760  Mining Tenements L45/317; L45/318; L45/319; L45/360; L45/361; L45/364; L45/389; L45/435; L45/561; L45/569; L45/577.  MARBLE BAR WA 6760
<b>Date of Report</b>	27 July 2021
<b>Decision</b>	Works approval granted

**Alana Kidd**  
**Manager, Resource Industries**

an officer delegated under section 20 of the *Environmental Protection Act 1986* (WA)

# Table of Contents

<b>1. Decision summary</b>	<b>1</b>
<b>2. Scope of assessment</b>	<b>1</b>
2.1 Regulatory framework	1
2.2 Application summary and overview of Premises	1
2.2.1 Padding machines	1
2.2.2 Screening buckets	2
2.3 Part IV of the EP Act	4
<b>3. Risk assessment</b>	<b>4</b>
3.1 Source-pathways and receptors	4
3.1.1 Emissions and controls	4
3.1.2 Receptors	5
3.2 Risk ratings	8
<b>4. Consultation</b>	<b>10</b>
<b>5. Conclusion</b>	<b>10</b>
<b>References</b>	<b>10</b>
<b>Appendix 1: Summary of applicant’s comments on risk assessment and draft conditions</b>	<b>11</b>
<b>Appendix 2: Water source information</b>	<b>14</b>
5.2 Location of water source infrastructure	14
5.3 Water quality used for dust suppression	15
<b>Appendix 3: Application validation summary</b>	<b>16</b>
Table 1: Proposed applicant controls – construction and operation	5
Table 2: Sensitive human and environmental receptors and distance from prescribed activity	6
Table 3: Risk assessment of potential emissions and discharges from the Premises during construction.	9
Table 4: Consultation	10
Figure 1: Premises boundary	3
Figure 2: Distance to sensitive receptors	7

## 1. Decision summary

This Decision Report documents the assessment of potential risks to the environment and public health from emissions and discharges during the construction of the Premises. As a result of this assessment, Works Approval W6529/2021/1 has been granted.

## 2. Scope of assessment

### 2.1 Regulatory framework

In completing the assessment documented in this Decision Report, the department has considered and given due regard to its Regulatory Framework and relevant policy documents which are available at <https://dwer.wa.gov.au/regulatory-documents>.

### 2.2 Application summary and overview of Premises

On the 12<sup>th</sup> of March 2021, IB Operations Pty Ltd (the applicant) submitted an application for a works approval to the department under section 54 of the *Environmental Protection Act 1986* (EP Act).

The application is to undertake operations using mobile screening plants relating to:

- Category 12, for the purpose of screening earth to supply padding material for the construction of the Iron Bridge Magnetite project slurry and return underground pipelines

The project consists of two underground pipelines approximately 135 km in length each. They will be located side-by-side within an infrastructure corridor defined by Ministerial Statement 993. The purpose of these pipelines is to transport magnetite ore slurry and reclaimed water between the ore processing facility from the North Star Magnetite Project (L8845/2014/1) and to a proposed concentrate handling facility in Port Hedland that is adjacent to the Fortescue Metals Group's Anderson Point Materials Handling Facility (L8194/2007/3).

The application is to undertake construction works relating to the operation of multiple tracked mobile screening facilities, and excavators with screening buckets with an expected throughput of 1.0 Mtpa for the project. This Decision Report and associated Works Approval considers emissions and discharges from the operation of the described equipment for the construction of the slurry and return pipelines only. Any other operations have not been considered and are not covered by this Decision Report and Works Approval.

The Premises runs between the Iron Bridge Magnetite Project and the Town of Port Hedland. Figure 1: Premises boundary outlines the boundary of the premises.

The Premises relates to the category and assessed production capacity under Schedule 1 of the *Environmental Protection Regulations 1987* (EP Regulations) which are defined in Works Approval W6529/2021/1. The infrastructure and equipment relating to the premises category and any associated activities which the department has considered in line with *Guidance Statement: Risk Assessments* (DER 2017) are outlined in Works Approval W6529/2021/1.

#### 2.2.1 Padding machines

The padding machines will not require any construction prior to operation. They operate as singular mobile units utilising raw material from the excavated trench and/ or borrow pits as required by the project. The plant will track alongside the trench, reclaiming raw material into the screening plant by the hydrostatic escalator located at the front of the machine. The output feed will supply bedding/padding material for the pipeline trench via the output conveyor belt, oversized material will be discharged from the rear of the plant. These machines will have a variable maximum output, depending on the model and soil type. The proposed machines are subject to availability but likely to have a maximum estimated output between 158 and 300 t/hr.

### 2.2.2 Screening buckets

The buckets will be mounted to excavators and reclaim raw material is to be screened through the modified buckets directly into the trench to provide safer egress points, as required under Ministerial Statement (MS) 993, and/ or screen material into plant limited locations throughout the pipeline trench. The screen rate is highly variable, based on the design and material encountered within the proposed prescribed premises boundary. Manufacturer theoretical calculations suggest the conservative capacity to be around 200 t/hr. The use of excavators with mounted screening buckets will not be a primary screening method throughout the pipeline project and used more so to supplement the project where the tracked plant may not be able to access or provide service.

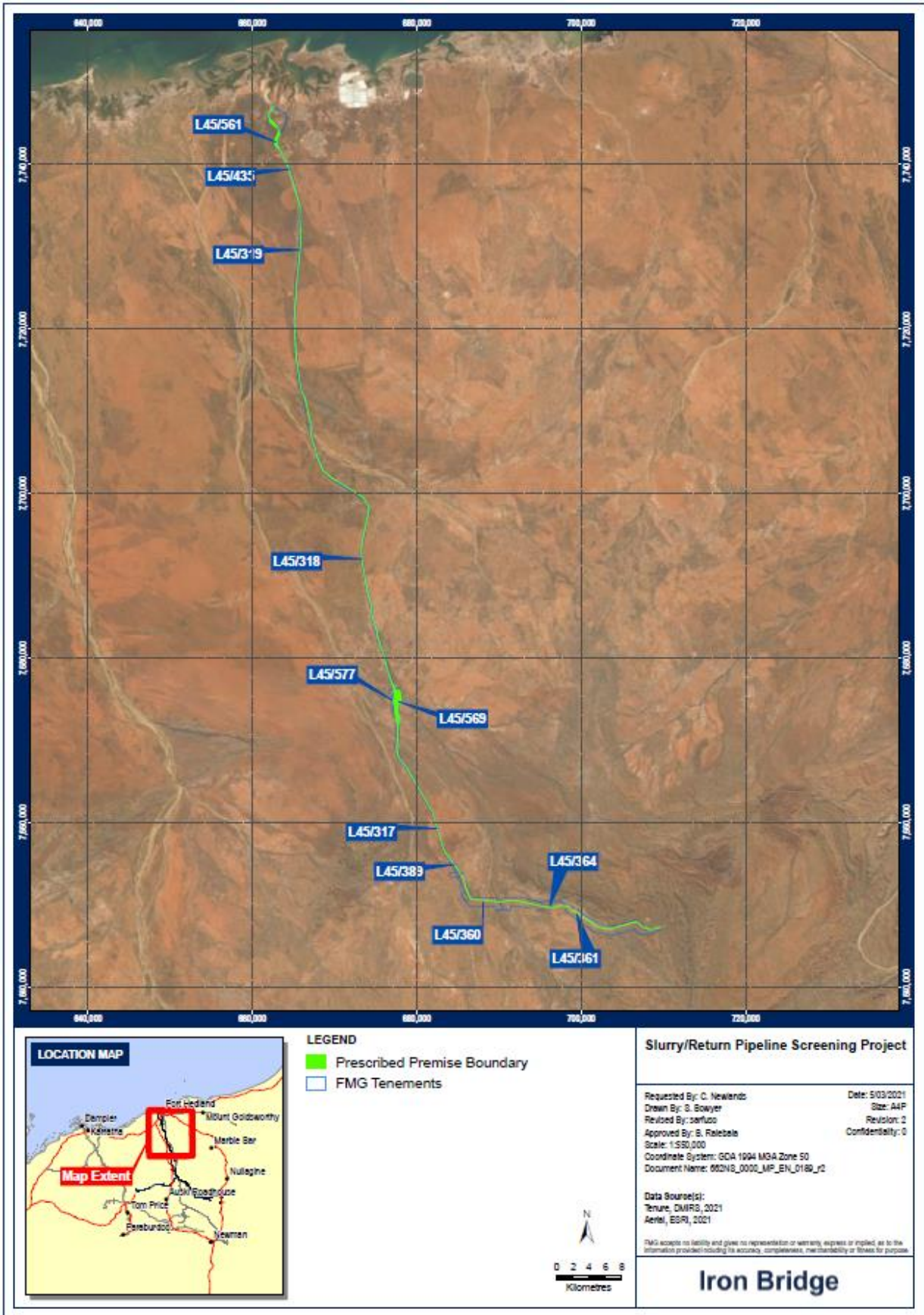


Figure 1: Premises boundary – within the green highlighted corridor

## 2.3 Part IV of the EP Act

The project and its associated infrastructure corridors, has been assessed under Part IV of the EP Act as EPA report number 1514. MS 993 was published on the 5<sup>th</sup> of January 2015 in relation to IB Operation Pty Ltd.'s proposal to develop an open cut iron ore mine and associated infrastructure. The result of the assessment defines the slurry corridor envelope and contains the following conditions:

- Ensuring that the project is implemented so that it does not affect the viability of *Pityrodia* sp;
- Ensuring that the linear infrastructure is sited and constructed in a manner that avoids declared rare flora, priority 1 flora species (including *Pityrodia* sp. Marble Bar) and threatened ecological communities where practicable, and minimises the impact to other conservation significant flora;
- Requiring that open trenches associated with construction of linear infrastructure are cleared of trapped fauna by fauna-rescue personnel at least twice daily; and
- Requiring that the proponent shall not undertake any ground disturbance activities for the construction of the linear infrastructure within the Slurry Corridor Development Envelope and the Infrastructure Corridor Development Envelope prior to preparing and submitting a Conservation Significant Flora and Vegetation Survey Plan, to the satisfaction of the CEO.

The development of the corridor will require clearing of up to 315 ha which is authorised under MS 993. Any potential disturbance to flora and vegetation and fauna during construction of the slurry and return pipelines has been considered to comply with the conditions set out in MS 993.

## 3. Risk assessment

The department assesses the risks of emissions from prescribed premises and identifies the potential source, pathway and impact to receptors in accordance with the *Guidance Statement: Risk Assessments* (DER 2017).

To establish a Risk Event there must be an emission, a receptor which may be exposed to that emission through an identified actual or likely pathway, and a potential adverse effect to the receptor from exposure to that emission.

### 3.1 Source-pathways and receptors

#### 3.1.1 Emissions and controls

The key emissions and associated actual or likely pathway during premises construction which have been considered in this Decision Report are detailed in Table 1 below. Table 1 also details the proposed control measures the applicant has proposed to assist in controlling these emissions, where necessary.

**Table 1: Proposed applicant controls – construction and operation**

Emission	Sources	Potential pathways	Proposed controls
<b>Construction and operation (including time limited operations)</b>			
Dust	Mobile screening plant operation and operational vehicle movements.	Air/windborne pathway	<ul style="list-style-type: none"> <li>• Manage in accordance with the Mine and Rail Dust Management Plan</li> <li>• Enforce speed limits in work areas</li> <li>• Ongoing visual assessment based on atmospheric conditions.</li> <li>• Utilise water carts where possible</li> <li>• Water to be supplied from existing bore and ‘turkeys nest’ dam infrastructure, used in the construction of the adjacent railway. Water quality details can be found in Appendix 2.</li> </ul>
Noise	Mobile screening plant operation	Air/windborne pathway	<ul style="list-style-type: none"> <li>• Inspection and maintenance of exhaust and silencing systems on machinery and equipment.</li> <li>• Use of low noise equipment where practicable.</li> </ul>
Sediment laden stormwater	Mobile screening plant operation, waste rock	Overland runoff	<ul style="list-style-type: none"> <li>• Screening plants to be located away from watercourses where practicable.</li> <li>• Work near major watercourses to be undertaken during dry conditions.</li> <li>• Waste rock to be managed onsite and contoured to ensure there is no impact to surface water</li> </ul>
Contaminated runoff	Mobile screening plant operation. Operational vehicle movements	Overland runoff. Leachate into groundwater	<ul style="list-style-type: none"> <li>• Store hydrocarbons, lubricants and greases in bunding in accordance with AS 1940-2004 and Chemical and Hydrocarbon Storage Procedure.</li> <li>• Position spill kits near areas with hydrocarbon spill potential.</li> <li>• Utilise spill trays and other containment mechanisms during maintenance.</li> </ul>

### 3.1.2 Receptors

In accordance with the *Guidance Statement: Risk Assessment* (DER 2017), the Delegated Officer has excluded employees, visitors and contractors of the applicant’s from its assessment. Protection of these parties often involves different exposure risks and prevention strategies, and is provided for under other state legislation.

Table 2 and Figure 2 below provides a summary of potential human and environmental receptors that may be impacted as a result of activities upon or emission and discharges from the prescribed premises (*Guidance Statement: Environmental Siting* (DER 2016)).

**Table 2: Sensitive human and environmental receptors and distance from prescribed activity**

Human receptors	Distance from prescribed activity
<p><u>Town of Port Hedland</u></p>	<p>Within boundary of the Town, screening activities will get to within about 2.5km east of South Hedland residences at its closest point.</p>
Environmental receptors	Distance from prescribed activity
<p><u>Proclaimed surface water regions Turner River and Turner River East</u></p> <p>These rivers are mostly dry and only flow following rainfall events.</p>	<p>Premises intersects river three times, the pipeline has been proposed to cross underneath the riverbed.</p>



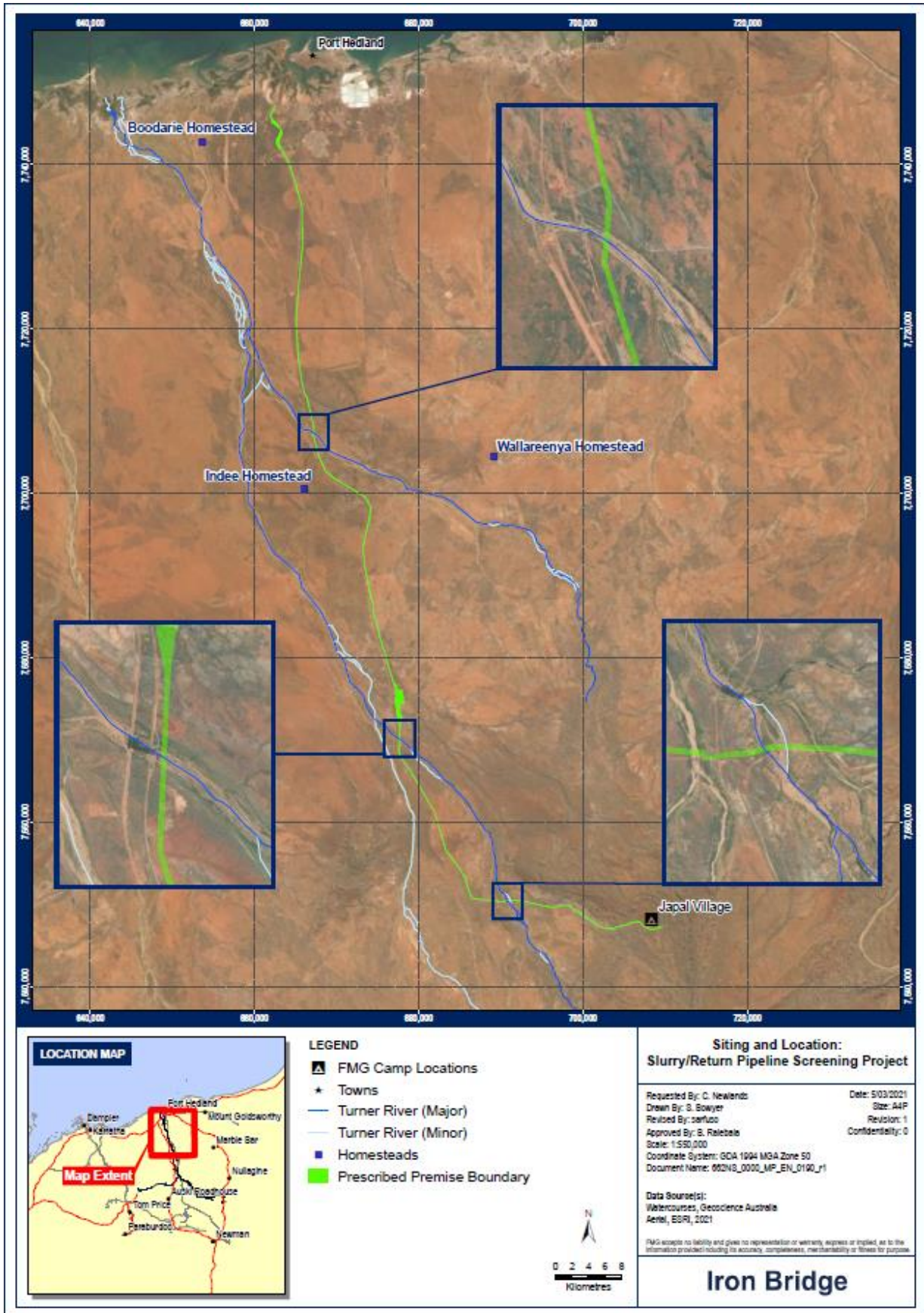


Figure 2: Distance to sensitive receptors

## 3.2 Risk ratings

Risk ratings have been assessed in accordance with the *Guidance Statement: Risk Assessments* (DER 2017) for each identified emission source and takes into account potential source-pathway and receptor linkages as identified in Section 3.1. Where linkages are in-complete they have not been considered further in the risk assessment.

Where the applicant has proposed mitigation measures/controls (as detailed in Section 3.1), these have been considered when determining the final risk rating. Where the Delegated Officer considers the applicant's proposed controls to be critical to maintaining an acceptable level of risk, these will be incorporated into the works approval as regulatory controls.

Additional regulatory controls may be imposed where the applicant's controls are not deemed sufficient. Where this is the case the need for additional controls will be documented and justified in Table 3.

Works Approval W529/2021/1 that accompanies this Decision Report authorises construction and time-limited operations. The conditions in the issued Works Approval, as outlined in Table 3 have been determined in accordance with *Guidance Statement: Setting Conditions* (DER 2015).

A licence is required following the time-limited operational phase authorised under the works approval to authorise emissions associated with the operation of the Premises i.e. screening activities. A risk assessment for the operational phase has been included in this Decision Report, however licence conditions will not be finalised until the department assesses the licence application.

**Table 3: Risk assessment of potential emissions and discharges from the Premises during construction.**

Risk Event					Risk rating <sup>1</sup> C = consequence L = likelihood	Applicant controls sufficient?	Conditions <sup>2</sup> of works approval	Justification for additional regulatory controls
Source/Activities	Potential emission	Potential pathways and impact	Receptors	Applicant controls				
<b>Operations (including time-limited operations)</b>								
Operation of mobile crushing and screening plant and operational vehicle movements	Dust	Air/windborne pathway causing impacts to health and amenity	Town of South Headland (2.5 km East)	Refer to Section 3.1	C = Minor L = Unlikely <b>Medium Risk</b>	Y	Condition 6, Table 2, Operational requirement, dust controls	N/A
	Noise	Air/windborne pathway causing impacts to health and amenity	Town of South Headland (2.5 km East)	Refer to Section 3.1	C = Moderate L = Possible <b>Medium Risk</b>	Y	Condition 1, Table 1, design and construction installation requirements, Noise controls	N/A
	Contaminated stormwater runoff	Overland runoff potentially causing ecosystem disturbance or impacting surface water quality	Turner River (intercepts on multiple occasions), Pilbara Proclaimed surface water area	Refer to Section 3.1	C = Slight L = Possible <b>Low Risk</b>	Y	Condition 1, Table 1, design and construction installation requirements, Stormwater controls  Condition 6, Table 2 Operational requirement, waste and leachate	N/A

Note 1: Consequence ratings, likelihood ratings and risk descriptions are detailed in the *Guidance Statement: Risk Assessments* (DER 2017).

Note 2: Proposed applicant controls are depicted by standard text. **Bold and underline text** depicts additional regulatory controls imposed by department.

## 4. Consultation

Table 4 provides a summary of the consultation undertaken by the department.

**Table 4: Consultation**

Consultation method	Comments received	Department response
Application advertised on the Department's website (07/06/2021)	No comments received	N/A
Shire of East Pilbara advised of proposal (04/06/2021)	No comments received	N/A
Department of Mines, Industry Regulation and Safety (DMIRS) advised of proposal (04/06/2021)	<p>The comments received were</p> <ul style="list-style-type: none"> <li>• FMG has an approved Mining Proposal (REG ID 87630) for the Iron Bridge Pipelines and has recently submitted an amendment to the approved mining proposal (REG ID 97061) which is currently under assessment. The construction of pipelines, borrow pits and other infrastructure has been approved under REG ID 87630, however a screening plant is not listed as an activity in the disturbance table. DMIRS will seek clarification from Fortescue as part of assessment of REG ID 97061 on that matter.</li> <li>• DMIRS understands that the operation of these facilities are regulated under Part V of the EP Act and that the project has been approved under Part IV. DMIRS assessment of proposals containing these facilities will focus on management of risks during decommissioning and closure.</li> </ul>	<p>Noted</p> <p>DWER acknowledges that the mining proposal has been approved and is currently undergoing amendment, and that further clarification regarding the screening plants will be sought by DMIRS. Decommissioning and closure risks will be assessed by DMIRS</p>

## 5. Conclusion

Based on the assessment in this Decision Report, the Delegated Officer has determined that a works approval will be granted, subject to conditions commensurate with the determined controls and necessary for administration and reporting requirements.

## References

1. Department of Environment Regulation (DER) 2016, *Guidance Statement: Environmental Siting*, Perth, Western Australia.
2. DER 2017, *Guidance Statement: Risk Assessments*, Perth, Western Australia.
3. DER 2015, *Guidance Statement: Setting Conditions*, Perth, Western Australia.
4. Email titled "North Sar Stage 2 – Works Approval Application" dated 12/03/2021, authored by IB Operations Pty Ltd, available at DWER records (DWERDT426643).

## Appendix 1: Summary of applicant's comments on risk assessment and draft conditions

Condition	Summary of applicant's comment	Department's response
<p>1. The works approval holder must</p> <p>(a) construct and/or install the infrastructure and/or equipment;</p> <p>(b) in accordance with the corresponding design and construction / installation requirements</p>	<p>The applicant notes plant to arrive at site already constructed, ready to operate</p>	<p>The Department recognises and accepts that the plant comes to site pre-constructed and has adjusted the works approval conditions wording to require installation and not construction.</p>
<p>1. Table 1 Infrastructure location</p>	<p>Administrative error in tenement name</p>	<p>Amended in works approval</p>
<p>1. Table 1</p> <p>Design and construction / installation requirements</p> <ul style="list-style-type: none"> <li>Excavators with screening buckets</li> </ul>	<p>Request to remove commissioning/construction requirements for the screening buckets since they are not the primary screening method.</p>	<p>The use of screening buckets will not be the primary source of screening and the works approval has been amended accordingly. The Department also notes that the screening buckets will be used for the installation of wildlife egress ramps, as regulated under Ministerial Statement 911 and therefore is viewed as a control under Part IV of the EP Act. Therefore, this requirement has been removed from the works approval.</p>
<p>2. The works approval holder must within 60 calendar days of an item of infrastructure or equipment required by condition 1 being constructed and/or installed:</p> <p>(a) Undertake an audit of their compliance with the requirements of condition 1; and</p> <p>(b) Prepare and submit to the CEO an Environmental Compliance Report on that compliance</p>	<p>Request to submit a single compliance report inclusive of all plant</p> <ul style="list-style-type: none"> <li>Look to submit a letter to the Department for the confirmation of the arrival as each piece of equipment to site as it will be 'constructed' and ready to operate</li> <li>When all equipment of present, send all-encompassing Compliance Report for <u>all</u> mobile equipment.</li> </ul> <p>Three padding machines are expected to arrive at the end of September within days of each other.</p>	<p>The Department has updated the conditions for the provision of a single all-encompassing compliance document after all machines have arrived on site.</p> <p>This document should include the dates of initial operation and relevant inspection and certification for each piece of infrastructure.</p> <p>The condition has also been updated to require submission within 30 days noting the full 60 days will not be required.</p>

Condition	Summary of applicant's comment	Department's response
<p>3. The Environmental Compliance Report required by Condition 2, must include as a minimum the following:</p> <p>(a) Certification by a suitably qualified person that the items of infrastructure or component(s) thereof, as specified in condition 1, have been constructed in accordance with the relevant requirements specified in condition 1.</p>	<p>Equipment arrives to site constructed, so can this be certified by a plant inspection, performed by a suitable qualified person.</p>	<p>The Department recognises that the machines come fully constructed and ready to operate. A suitably qualified person conducting and endorsing the plant inspections upon arrival to site will be acceptable.</p>
<p>4. The works approval holder may only commence time limited operations for an item of infrastructure identified in condition 1 where, the Environmental Compliance Report as required by condition 2 has been submitted by the works approval holder for that item of infrastructure</p>	<p>Request that TLO can commence post commissioning checks on each plant and not conditioned by the submission of the compliance report. The compliance report will be submitted within 60 days. It is requested that TLO can occur once each piece of equipment has been checked upon arrival.</p>	<p>Noted, once checks have been done, the Department will need to be notified as per a Compliance Report, and time limited operation (TLO) can then commence for all infrastructure.</p> <p>The application did not request a commissioning phase. The compliance report advises the Department that all plant is constructed as per the assessment and allows the commencement and timeframe of TLO to be known.</p>
<p>6. Table 2 Infrastructure and equipment requirements during time limited operations</p> <ul style="list-style-type: none"> <li>Work on or near major rivers or watercourses shall be undertaken during the dry season between June and December</li> </ul>	<p>Request to reword the condition to allow for operation at any time so long as the conditions are dry, given the uncertainty of seasonal conditions.</p>	<p>Amended The Department recognises that the Pilbara climate is arid and rainfall is highly variable and the chance of dry conditions on any day of the year is likely.</p> <p>The Department also notes that the padding machines require dry material to operate, so screening work will have to cease during any wet conditions regardless.</p>
<p>7. The works approval holder must submit to the CEO a report on the time limited operations within 30 calendar days of the completion date of time limited</p>	<p>60 days are conditioned in W6530/2021/1</p>	<p>Amended This condition now reads 60 days, across both works approvals.</p>

Condition	Summary of applicant's comment	Department's response
operations or 30 calendar days before the expiration date of the works approval, whichever is the sooner		

## Appendix 2: Water source information

### 5.2 Location of water source infrastructure

<b>Water Infrastructure</b>	<b>Easting</b>	<b>Northing</b>
Turkeys Nest at CWS01-1	680471.55	7666856.30
Turkeys Nest at CWS01-2	680555.20	7666814.20
Turkeys Nest at Chainage 85km	678325.40	7667054.50
WS06P1	678403.00	7667448.00
WS06P3	678730.00	7666739.00
WS07AP1	683093.00	7656517.00
WS07AP2	683038.00	7656657.00
CWS01P2	680890.00	7667137.00
CWS01P3	680644.00	7666772.00
CWS01P4	680509.00	7666854.00
Turkeys Nest at WS03	672615.90	7698685.10
Turkeys Nest at WS04	673766.60	7689000.80
WS02P2	666095.00	7712283.00
WS03P1	672944.00	7698678.00
WS03P2	672837.00	7698676.00
WS04P2	674458.00	7689314.00
WS04P3	674534.00	7689138.00
WS04P4	674601.00	7688773.00
WS05P3	677647.00	7671007.00
WS05P4	677347.00	7671040.00



## 5.3 Water quality used for dust suppression

Range	Minimum	25th %	Mean	75th %	80th %	90th %	Maximum	Total Analyses	ANZECC 95% of Species Limit of Protection
pH	6.74	7.81	7.96	8.11	8.15	8.23	8.86	102	6.0-8.5
EC (µS/cm)	795	1240	3292	4410	7208	8098	9000	53	-
Total Dissolved Solids	370	783	1940	3050	4086	4677	5300	102	-
HCO <sub>3</sub> as CaCO <sub>3</sub>	222	343	451	588	619	671	860	94	-
CO <sub>3</sub> as CaCO <sub>3</sub>	1	1	5	1	1	2	133	65	-
OH <sup>-</sup> *	1	1	1	1	1	1	1	53	-
Total Alkalinity as CaCO <sub>3</sub>	222	345	436	589	618	663	755	78	-
Total Hardness as CaCO <sub>3</sub>	210	259	346	339	339	436	821	9	-
Ag <sup>+</sup>	0.0010	0.0010	0.0010	0.0010	0.0010	0.0010	0.0010	2	0.00005
Al	0.008	0.010	0.023	0.010	0.010	0.010	0.400	31	0.055
As (V)	0.0010	0.0010	0.0064	0.0125	0.0140	0.0164	0.0240	23	0.013
B	0.180	0.410	0.771	1.360	1.400	1.538	1.660	52	0.37
Ba	0.030	0.054	0.085	0.100	0.105	0.113	0.229	23	-
Be <sup>+</sup>	0.0010	0.0010	0.0010	0.0010	0.0010	0.0010	0.0010	13	0.00013
Ca	4.0	21.0	46.3	67.5	72.4	84.8	172.0	102	-
Cd <sup>+</sup>	0.00010	0.00010	0.00010	0.00010	0.00010	0.00010	0.00010	22	0.0002
Cl	78	196	708	1075	1722	2027	2400	102	-
Co <sup>+</sup>	0.0010	0.0010	0.0010	0.0010	0.0010	0.0010	0.0010	13	0.0014
Cr (VI)	0.0010	0.0010	0.0025	0.0038	0.0040	0.0050	0.0130	22	0.001
Cu	0.0010	0.0010	0.0028	0.0025	0.0036	0.0068	0.0100	23	0.0014
F	-	-	-	-	-	-	-	0	-
Fe	0.007	0.050	0.117	0.050	0.050	0.050	2.1	32	0.3
Hg <sup>+</sup>	0.00010	0.00010	0.00010	0.00010	0.00010	0.00010	0.00010	22	0.0006
K	1.0	5.0	10.2	16.0	17.0	19.0	23.0	102	-
Mg	14.0	39.3	59.2	70.0	71.8	88.1	151.0	102	-
Mn	0.0010	0.0010	0.0104	0.0030	0.0072	0.0240	0.2060	47	1.9
Mo	0.0010	0.0030	0.0110	0.0130	0.0138	0.0194	0.0370	9	0.034
Na	84.0	146.5	574.4	1055.8	1296.0	1540.0	2100.0	102	-
Ni	0.0010	0.0010	0.0015	0.0018	0.0020	0.0020	0.0050	22	0.011
NO <sub>3</sub> as N	2.76	3.17	4.06	4.62	5.43	6.20	6.58	18	0.7
NO <sub>2</sub> + NO <sub>3</sub> as N	2.76	3.17	4.06	4.62	5.43	6.20	6.58	18	-
TN as N	2.76	3.17	4.06	4.62	5.43	6.20	6.58	18	-
Pb <sup>+</sup>	0.0010	0.0010	0.0010	0.0010	0.0010	0.0010	0.0010	22	0.0034
Se (Tot) <sup>+</sup>	0.0100	0.0100	0.0100	0.0100	0.0100	0.0100	0.0100	12	0.011
Si	19.10	34.20	38.55	43.70	44.94	46.24	47.70	33	-
SO <sub>4</sub>	16	57	165	259	293	407	560	53	-
Sr	0.184	0.469	0.912	1.195	1.238	1.456	3.040	52	-
U <sup>+</sup>	-	-	-	-	-	-	-	0	0.0005
V	0.0100	0.0100	0.0300	0.0300	0.0420	0.0740	0.1100	13	0.006
Zn	0.005	0.005	0.010	0.012	0.013	0.019	0.031	22	0.008

U<sup>+</sup>: value below detection limit

0.008: value exceeding ANZECC 95% of Species Limit of Protection

## Appendix 3: Application validation summary

SECTION 1: APPLICATION SUMMARY (as updated from validation checklist)	
<b>Application type</b>	
Works approval	<input checked="" type="checkbox"/>
Date application received	12/03/2021
<b>Applicant and Premises details</b>	
Applicant name/s (full legal name/s)	IB Operations Pty Ltd
Premises name	North star Magnetite Project
Premises location	L45/317; L45/318; L45/319; L45/360; L45/361; L45/364; L45/389; L45/435; L45/561; L45/569 & L45/577.
Local Government Authority	Shire of East Pilbara
<b>Application documents</b>	
HPCM file reference number:	DER2018/001042
Key application documents (additional to application form):	Attachment 3B – Magnetite Concentrate Slurry & Return Water Pipeline Mobile Screening Project – Supporting Document. Cover letter Attachment 1A – Mining Tenement Summary Report Attachment 1B ASIC extract Attachment 2 – Prescribed Premise Boundary map Attachment 7 – Siting and Location location map Attachment 8A – PPB coordinates Slurry PV r06 shapefile
<b>Scope of application/assessment</b>	
Summary of proposed activities or changes to existing operations.	<p><b>Works approval</b></p> <p>Proposal to construct a below ground Magnetite Slurry and Return Pipeline</p> <p>The two pipelines to be side by side and are approximately 135 km each. They will run between Iron Bridge Operation's (IBO) North Star Magnetite project and FMG's Port Hedland Concentrate Handling Facility.</p> <p>The applicant is applying for Category 12 to operate multiple mobile tracked screening plants, as well as excavators with screening buckets. The purpose being to supply 'padding' (screened earth) material to the pipeline for burial to reduce the risk of large rocks causing damage to the pipeline.</p> <p>The activities are estimated to operate for 9 months. Applicant has applied for 1 Mtpa throughput (expected to be closer to 0.5 Mtpa).</p>

Category number/s (activities that cause the premises to become prescribed premises)

Table 1: Prescribed premises categories

Prescribed premises category and description	Proposed production capacity	Proposed changes to the production or design capacity (amendments only)
Category 12: Screening etc. of material: premises (other than premises within category 5 or 8) on which material extracted from the ground is screened, washed, crushed, ground, milled, sized or separated.	Proposed – Multiple mobile screening plants for capability of 1.0 Mtpa	

**Legislative context and other approvals**

Has the applicant referred, or do they intend to refer, their proposal to the EPA under Part IV of the EP Act as a significant proposal?	Yes <input type="checkbox"/> No <input checked="" type="checkbox"/>	Referral decision No: Managed under Part V <input type="checkbox"/> Assessed under Part IV <input type="checkbox"/>
Does the applicant hold any existing Part IV Ministerial Statements relevant to the application?	Yes <input checked="" type="checkbox"/> No <input type="checkbox"/>	Ministerial statement No: 993 EPA Report No:
Has the proposal been referred and/or assessed under the EPBC Act?	Yes <input checked="" type="checkbox"/> No <input type="checkbox"/>	Reference No: EPBC 2012/6689
Has the applicant demonstrated occupancy (proof of occupier status)?	Yes <input checked="" type="checkbox"/> No <input type="checkbox"/>	Mining lease / tenement <input checked="" type="checkbox"/> Expiry: L45/317 – 07/12/2036 L45/318 – 25/02/2036 L45/319 – 12/04/2038 L45/360 - 09/04/2035 L45/361 – 15/04/2035 L45/364 – 03/08/2035 L45/389 – 04/02/2037 L45/435 – 06/08/2041 L45/561 (pending) L45/569 (pending) L45/577 (pending)
Has the applicant obtained all relevant planning approvals?	Yes <input type="checkbox"/> No <input type="checkbox"/> N/A <input checked="" type="checkbox"/>	If N/A explain why? Not required for active mine site.
Has the applicant applied for, or have an existing EP Act clearing permit in relation to this proposal?	Yes <input checked="" type="checkbox"/> No <input type="checkbox"/>	CPS No: CPS 5427/5, CPS 6106/2, CPS 6236/2
Has the applicant applied for, or have an existing CAWS Act clearing licence in relation to this proposal?	Yes <input type="checkbox"/> No <input checked="" type="checkbox"/>	Application reference No: N/A Licence/permit No: N/A

Has the applicant applied for, or have an existing RIWI Act licence or permit in relation to this proposal?	Yes <input checked="" type="checkbox"/> No <input type="checkbox"/>	Licence/permit No: GWL 161699(5), GWL161897(5), GWL161717(5)
Does the proposal involve a discharge of waste into a designated area (as defined in section 57 of the EP Act)?	Yes <input checked="" type="checkbox"/> No <input type="checkbox"/>	Name: N/A Type: Proclaimed Groundwater Area/Surface Water Area Has Regulatory Services (Water) been consulted? Yes <input type="checkbox"/> No <input type="checkbox"/> N/A <input checked="" type="checkbox"/> Regional office: North West
Is the Premises situated in a Public Drinking Water Source Area (PDWSA)?	Yes <input type="checkbox"/> No <input checked="" type="checkbox"/>	Name: N/A Priority: P1 / P2 / P3 / N/A Are the proposed activities/ landuse compatible with the PDWSA (refer to <a href="#">WQPN 25</a> )? Yes <input type="checkbox"/> No <input type="checkbox"/> N/A <input checked="" type="checkbox"/>
Is the Premises subject to any other Acts or subsidiary regulations (e.g. <i>Dangerous Goods Safety Act 2004, Environmental Protection (Controlled Waste) Regulations 2004, State Agreement Act xxxx</i> )	Yes <input checked="" type="checkbox"/> No <input type="checkbox"/>	Mining Proposal Reg I.D. 87630
Is the Premises within an Environmental Protection Policy (EPP) Area?	Yes <input type="checkbox"/> No <input checked="" type="checkbox"/>	
Is the Premises subject to any EPP requirements?	Yes <input type="checkbox"/> No <input checked="" type="checkbox"/>	
Is the Premises a known or suspected contaminated site under the <i>Contaminated Sites Act 2003</i> ?	Yes <input checked="" type="checkbox"/> No <input type="checkbox"/>	Site possibly contaminated near Port Hedland, covering tenement L45/561 (pending). Description- BHP Billiton Port Hedland, Boodarie Iron Hot Briquetted Iron Plant Classification: Possibly contaminated – investigation required (PC-IR) Date of classification: 03/07/2009