



Application for Works Approval Amendment

Part V Division 3 of the *Environmental Protection Act 1986*

Works Approval Number	W6566/2021/1
Works Approval Holder	Evolution Mining (Mungari) Pty Ltd
ACN	002 124 745
File Number	APP-0033113
Premises	Mungari Gold Mine Kundana Road KALGOORLIE WA 6430 Mining tenements: L15/391, M15/1831 (partial), M15/1827 (partial), L15/387 (partial), M15/829 (partial), M15/830 (partial)
Date of Report	5 May 2026
Decision	Revised works approval granted

Table of Contents

1. Decision summary	1
2. Scope of assessment	1
2.1 Regulatory framework	1
2.2 Amendment summary	1
3. Risk assessment	2
3.1 Source-pathways and receptors	2
3.1.1 Emissions and controls	2
3.1.2 Receptors	3
3.2 Risk ratings	5
4. Consultation	7
5. Conclusion	7
5.1 Summary of amendments	7
References	7

Table 1: Works Approval Holder controls	2
Table 2: Sensitive human and environmental receptors and distance from prescribed activity	3
Table 3: Risk assessment of potential emissions and discharges from the Premises during construction and operation	6
Table 4: Consultation	7
Table 5: Summary of works approval amendments	7
Figure 1: Location of Site Infrastructure	4

1. Decision summary

Works Approval W6566/2021/1 is held by Evolution Mining (Munguri) for the Mungari Gold Mine (the Premises), located at Mining tenements: L15/391, M15/1831 (partial), M16/1827 (partial), L15/387 (partial) and M15/830 (partial).

This Amendment Report documents the assessment of potential risks to the environment and public health from proposed changes to the emissions and discharges during and operation of the Premises. As a result of this assessment, Revised Works Approval W6566/2021/1 has been granted.

The Revised Works Approval issued as a result of this amendment consolidates and supersedes the existing Works Approval previously granted in relation to the Premises. The Revised Works Approval has been granted in a new format with existing conditions being transferred, but not reassessed, to the new format.

2. Scope of assessment

2.1 Regulatory framework

In completing the assessment documented in this Amendment Report, the department has considered and given due regard to its Regulatory Framework and relevant policy documents which are available at <https://dwer.wa.gov.au/regulatory-documents>.

2.2 Amendment summary

Evolution's Mungari Gold Operations (MGO) is a mining and processing operation located 20 km west of Kalgoorlie Boulder in Western Australia. Current operational projects within the MGO include the Mungari Gold Project (L7750/2001/10), Carbine/Paradigm Project Area (L9099/2017/1) and Kundana Gold Mine (L9190/2019/2).

On 5 January 2026, the Works Approval Holder submitted an application to the department to amend Works Approval W6566/2021/1 under section 59 and 59B of the *Environmental Protection Act 1986* (EP Act). W6566/2021/1 relates to operations at the Mungari Gold Project.

Works Approval W6566/2021/1 was issued on 10 August 2021, providing approval for Category 6 Mine Dewatering activities, with assessed capacity of 315,360 tonnes per year. The main activities approved in the works approval were:

- a 13.58km pipeline from the Rayjax Open Pit, discharging into the Northern Transfer Pond at the Mungari Mill. Water will then be discharged to Pope John pit (also managed by Northern Star under Kundana Gold Mine licence L9190/2019); and
- a 1.73km pipeline from Cutters Ridge Haul Road (connecting to Rayjax – Mungari pipeline) discharging into the Cutters Ridge Open Pit; and
- Dewatering into Cutters Ridge Open pit as a new discharge location.

The following amendments are being sought:

- Extend the duration of the works approval by 5 years to August 2031
- Modify existing approved pipelines to a revised diameter of 280 mm (previous assessed diameter of 160 mm)
- Addition of a new High Density Polyethylene(HDPE) lined transfer dam (Rayjax dam) with maximum capacity of 12540 m³. (Designed to include a minimum freeboard of 300 mm (freeboard not included in the 12540m³ capacity.)

The proposed Rayjax dam is intended to support mine dewatering activities by providing temporary storage of water transferred from Rayjax pit prior to pumping to Cutters Ridge pit or Northern transfer dam. The proposed location of the dam is displayed in Figure 1,

No changes to the existing approved category of capacity are required through this amendment. No mine dewatering infrastructure approved under W6566/2021/1 has been constructed at the Rayjax Project to date.

3. Risk assessment

The department assesses the risks of emissions from prescribed premises and identifies the potential source, pathway and impact to receptors in accordance with the *Guideline: Risk assessments* (DWER 2020).

To establish a Risk Event there must be an emission, a receptor which may be exposed to that emission through an identified actual or likely pathway, and a potential adverse effect to the receptor from exposure to that emission.

3.1 Source-pathways and receptors

3.1.1 Emissions and controls

The key emissions and associated actual or likely pathway during premises construction and time limited operation which have been considered in this Amendment Report are detailed in Table 1 below. Table 1 also details the proposed control measures the Works Approval Holder has proposed to assist in controlling these emissions, where necessary.

Table 1: Works Approval Holder controls

Emission	Sources	Potential pathways	Proposed controls
Construction			
Dust	Construction of new transfer dam	Air/windborne pathway	Water cart retained onsite, wetting down of roads and stockpiles when required.
Time limited operations			
Hypersaline mine dewater	Dewatering discharge into transfer dam	Seepage of hypersaline pit lake water through transfer dam, leading to mounding of hypersaline groundwater into the root zone of the surrounding native vegetation, causing stress or death.	HDPE lining of dam
Overtopping of transfer dam		Direct discharge onto soil and native vegetation causing topsoil contamination and plant stress or death	<ul style="list-style-type: none"> Adherence to minimum prescribed freeboard level (300 mm) including monitoring of high rainfall / flood events. Safety bunding around the pit crests and dam which will limit the affected area should overtopping occur.

			<ul style="list-style-type: none"> • Ability to decrease discharge flowrate by increasing flowrate to other discharge points. • Daily visual inspection of freeboard level when discharging. • During operations and in the event of a spill, the Spill Management Procedure will be followed • Remaining capacity is monitored when actively discharging.
--	--	--	--

3.1.2 Receptors

In accordance with the *Guideline: Risk assessments* (DWER 2020), the Delegated Officer has excluded employees, visitors and contractors of the Works Approval Holder's from its assessment. Protection of these parties often involves different exposure risks and prevention strategies, and is provided for under other state legislation.

Table 2 below provides a summary of potential human and environmental receptors that may be impacted as a result of activities upon or emission and discharges from the prescribed premises (*Guideline: Environmental siting* (DWER 2020)).

Table 2: Sensitive human and environmental receptors and distance from prescribed activity

Environmental Receptors	Distance from prescribed activity
Adjacent native vegetation	Less than 50 metres to north and east of northern transfer pond.
Inland water bodies	300m from Primary Mine Pit
Heritage receptors	Distance from prescribed activity
DPLH registered site 34415 - "Pulyinyaminya Cave"	Proposed pipeline intersects with the public buffered boundary of Aboriginal Heritage place ID 34415, it does not intersect with the actual place location and consequently approvals under the Aboriginal Heritage Act 1972 are not required.

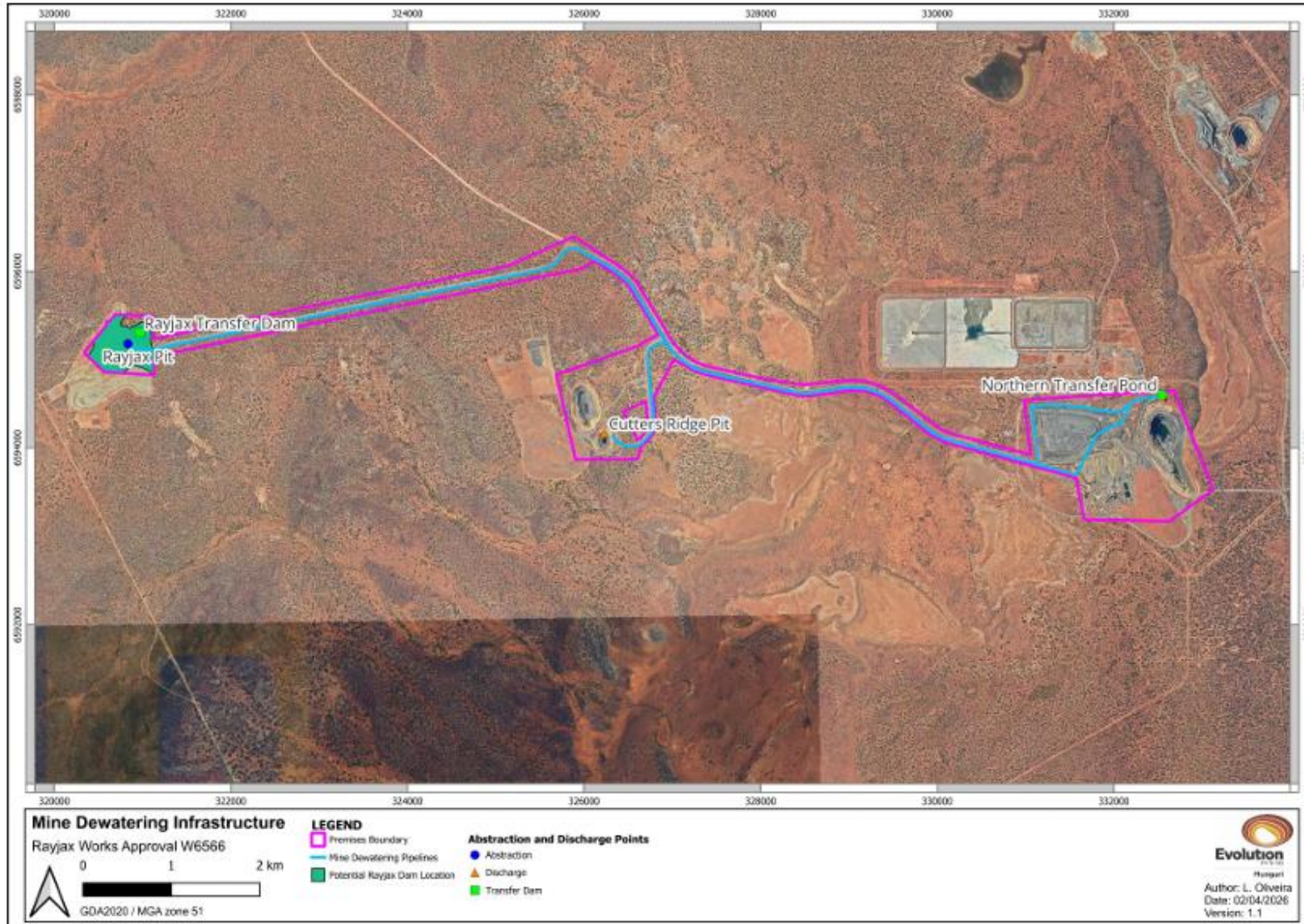


Figure 1: Location of Site Infrastructure

3.2 Risk ratings

Risk ratings have been assessed in accordance with the *Guideline: Risk Assessments* (DWER 2020) for those emission sources which are proposed to change and takes into account potential source-pathway and receptor linkages as identified in Section 3.1. Where linkages are incomplete they have not been considered further in the risk assessment.

Where the Works Approval Holder has proposed mitigation measures/controls (as detailed in Section 3.1), these have been considered when determining the final risk rating. Where the Delegated Officer considers the Works Approval Holder's proposed controls to be critical to maintaining an acceptable level of risk, these will be incorporated into the works approval as regulatory controls.

Additional regulatory controls may be imposed where the Works Approval Holder's controls are not deemed sufficient. Where this is the case the need for additional controls will be documented and justified in Table 3.

The Revised Works Approval W6566/2021/1 that accompanies this Amendment Report authorises construction and time-limited operations. The conditions in the Revised Works Approval have been determined in accordance with *Guidance Statement: Setting Conditions* (DER 2015).

An amendment to the licence is required following the time-limited operational phase authorised under the works approval to authorise emissions associated with the ongoing operation of the category 6 operations at the Premises. A risk assessment for the operational phase has been included in this Amendment Report, however licence conditions will not be finalised until the department assesses the licence application.

Table 3. Risk assessment of potential emissions and discharges from the Premises during construction and operation

Risk Event					Risk rating ¹ C = consequence L = likelihood	Works Approval Holder's controls sufficient?	Conditions ² of works approval	Justification for additional regulatory controls/ DWER comments
Source/Activities	Potential emission	Potential pathways and impact	Receptors	Works Approval Holder's controls				
Construction								
Construction of new transfer dam	Dust	Pathway Air/windborne pathway causing impacts to health and amenity Impact: smothering	Adjacent native vegetation	Refer to Section 3.1	C = Minor L = Possible Medium Risk	Y	Condition 1 – Construction control (Water truck requirement)	N/A
Time Limited Operation								
Dewatering discharge into HDPE lined transfer dam	Mounding of hypersaline groundwater table within the vicinity of the receiving pit	Pathway: Seepage hypersaline pit lake water through pit walls Impact: Native vegetation health	Native vegetation	Refer to Section 5.1	C = Moderate L = Unlikely Medium Risk	Y	Condition 1 – Construction control (HDPE Lining)	N/A
	Overtopping of pit hypersaline water	Pathway: Direct discharge into soil Impact: top soil contamination, native vegetation health	Native vegetation	Refer to Section 5.1	C = Moderate L = Unlikely Medium Risk	Y	Condition 1 – Construction Control (Minimum freeboard requirement)	N/A

Note 1: Consequence ratings, likelihood ratings and risk descriptions are detailed in the *Guideline: Risk assessments* (DWER 2020).

Note 2: Proposed Works Approval Holder's controls are depicted by standard text. **Bold and underline text** depicts additional regulatory controls imposed by department.

Works Approval: W6566/2021/1

4. Consultation

Table 4 provides a summary of the consultation undertaken by the department.

Table 4: Consultation

Consultation method	Comments received	Department response
Works Approval Holder was provided with draft amendment on 9 April 2026.	None received	N/A

5. Conclusion

Based on the assessment in this Amendment Report, the Delegated Officer has determined that a Revised Works Approval will be granted, subject to conditions commensurate with the determined controls and necessary for administration and reporting requirements.

5.1 Summary of amendments

Table 5 provides a summary of the proposed amendments and will act as record of implemented changes. All proposed changes have been incorporated into the Revised Works Approval as part of the amendment process.

Table 5: Summary of works approval amendments

Condition no.	Proposed amendments
Cover page	Works Approval duration extended until 10/8/2031
1	Construction table updated to include: <ul style="list-style-type: none"> - Dewatering pipeline diameter of 280 mm - Construction requirements added for new HDPE Lined Transfer Dam.
New Figure 2	Figure 2 included to specify location of new site infrastructure

References

1. Department of Environment Regulation (DER) 2015, *Guidance Statement: Setting Conditions*, Perth, Western Australia.
2. Department of Water and Environmental Regulation (DWER) 2020, *Guideline: Environmental Siting*, Perth, Western Australia.
3. DWER 2020, *Guideline: Risk Assessments*, Perth, Western Australia.
4. Evolution Mining (Mungari) Pty Ltd. (2025). *Attachment 3B: Proposed Activities – W6566/2021/1 Works Approval Amendment*. Submitted to the Department of Water and Environmental Regulation, Government of Western Australia, 23 December 2025.