



Application for Works Approval

Part V Division 3 of the *Environmental Protection Act 1986*

Works Approval Number	W6722/2022/1
Applicant	Roy Hill Iron Ore Pty Ltd
ACN	123 722 038
File number	DER2022/000351
Premises	Roy Hill Mine Legal description M46/518 and M46/519 NEWMAN WA 6753 As defined by the coordinates in Schedule 1 of the works approval As defined by the premises map attached to the issued works approval
Date of report	19/01/2023
Decision	Works approval granted

Steve Checker
MANAGER WASTE INDUSTRIES
REGULATORY SERVICES

an officer delegated under section 20 of the *Environmental Protection Act 1986* (WA)

Table of Contents

1. Decision summary	1
2. Scope of assessment	1
2.1 Regulatory framework	1
2.2 Application summary and overview of premises	1
2.3 Part IV of the EP Act	1
3. Risk assessment	2
3.1 Source-pathways and receptors	2
3.1.1 Emissions and controls	2
3.1.2 Receptors	4
3.2 Risk ratings	3
4. Consultation	9
5. Conclusion	9
References	9
Appendix 2: Application validation summary	10

Table 1: Proposed applicant controls	2
Table 2: Sensitive human and environmental receptors and distance from prescribed activity	5
Table 3: Risk assessment of potential emissions and discharges from the Premises during construction, commissioning and operation	4
Table 4: Consultation	9
Figure 1: Distance to sensitive receptors	1

1. Decision summary

This decision report documents the assessment of potential risks to the environment and public health from emissions and discharges during the construction and time limited operation of the premises. As a result of this assessment, works approval W6722/2022/1 has been granted.

2. Scope of assessment

2.1 Regulatory framework

In completing the assessment documented in this decision report, the Department of Water and Environmental Regulation (the department; DWER) has considered and given due regard to its regulatory framework and relevant policy documents which are available at <https://dwer.wa.gov.au/regulatory-documents>.

2.2 Application summary and overview of premises

On 25 July 2022, the applicant submitted an application for a works approval to the department under section 54 of the *Environmental Protection Act 1986* (EP Act).

The application is to undertake construction works relating to construct an additional 100 m³/day WWTP to increase the total treatment capacity to 610 m³/day, and increase the size of the sprayfield to receive up to up to 610 m³/day of treated wastewater at the premises. The premises is approximately 110 km north of Newman, WA.

The premises relates to the category and assessed design capacity under Schedule 1 of the *Environmental Protection Regulations 1987* (EP Regulations) which are defined in works approval W6722/2022/1. The infrastructure and equipment relating to the premises category and any associated activities which the department has considered in line with *Guideline: Risk Assessments* (DWER 2020) are outlined in works approval W6722/2022/1.

2.3 Part IV of the EP Act

The original mine proposal was referred to the EPA and approved as two separate proposals, Stages 1 and 2. The respective implementation agreements are set out in Ministerial Statements 824 and 829 (as amended) and changes to conditions recorded in Ministerial Statements 979 and 980.

The proposed changes to the original proposal are required to achieve an ore blend that satisfies customer demand. This involves multiple pits operating at once to produce a consistent quality of ore. In turn, there is a requirement to increase dewatering to maintain dry mining conditions. Mining multiple pits at once also creates the need for additional above ground waste rock dumps due to reduced availability of pit voids for waste rock disposal during mine operation. Additional ground disturbance is required to accommodate the above ground waste rock dumps, aquifer injection infrastructure to dispose of mine dewater and pit abandonment bunds for mine closure.

The EPA released the Revised Proposal for the Roy Hill iron Ore Mine Report on 20 October 2021. Ministerial Statement 1189 was issued on 19 May 2022. Ministerial Statements 824, 829, 979 and 980 are repealed on the issuing of Ministerial Statement 1189. A summary of the conditions relevant to Part V of the EP Act assessment is included below:

- Excess water disposal by aquifer injection and recharge basins on Ministerial Statement 1189 is 508 GL until 2032;
- Prior to aquifer injection and mine pit dewatering exceeding the extent of the original authorised proposal, the proponent shall revise the Water Management Plan – Mine OPPLN-00300 Rev 1 and Roy Hill iron Ore Vegetation Management

Plan OP-PLN-00344 Rev 1, and this shall be confirmed by EPAS;

- Increase the injection limit up to 50,000 mg/L TDS in the SWIB;
- The Management Plans shall specify trigger criteria to ensure that inland waters and subterranean fauna impacts are avoided. This includes water quality and standing water levels triggers; and
- Evaporation Pond Design and Management Plan for the storage of mine dewatering water overtopping, seepage, construction materials characteristics and total capacity/freeboards requirements.

3. Risk assessment

The department assesses the risks of emissions from prescribed premises and identifies the potential source, pathway and impact to receptors in accordance with the *Guideline: Risk Assessments* (DWER 2020).

To establish a risk event there must be an emission, a receptor which may be exposed to that emission through an identified actual or likely pathway, and a potential adverse effect to the receptor from exposure to that emission.

3.1 Source-pathways and receptors

3.1.1 Emissions and controls

The key emissions and associated actual or likely pathway during premises construction and time limited operation which have been considered in this decision report are detailed in Table 1 below. Table 1 also details the control measures the applicant has proposed to assist in controlling these emissions, where necessary.

Table 1: Proposed applicant controls

Emission	Sources	Potential pathways	Proposed controls
Construction			
Dust	Construction activities; earthworks	Air / windborne pathway	Any dust generated will be minimised as required through the application of water for dust suppression
Noise	Construction activities; earthworks	Air / windborne pathway	All project activities shall be conducted in accordance with the <i>Environmental Protection (Noise) Regulations 1997</i> , Australian Standard 2436-1981: <i>Guide to noise control on construction, maintenance and demolition sites</i> , and relevant occupational health and safety standards Equipment shall be fitted with appropriate noise reduction devices (where necessary) to comply with Project Health, Safety and Environment (HSE) and regulatory requirements; and Mobile equipment shall be regularly inspected, maintained and replaced so that noise levels are minimised during the equipment life.

Emission	Sources	Potential pathways	Proposed controls
Potentially contaminated stormwater		Overland flow	No specific controls identified
Windblown waste	General construction activities	Air/windborne pathway	No specific controls identified
Time limited operation			
Odour	WWTP operation and sprayfield operation	Air / windborne pathway	<p>The WWTP will be designed as a containerised system with enclosed balance tank and treated effluent/irrigation tank.</p> <p>The sprayfield will be located 200 m south-west of the accommodation village. It is noted that the applicant's accommodation village is not considered a sensitive receptor by DWER as detailed in section 3.1.2 below.</p> <p>Odour will be monitored during the operational phase via ongoing inspections.</p>
Discharge of Treated Wastewater	Sprayfield operation; Spills and leaks; Sludge	Infiltration	<p>Sprayfield has been designed based on Water Quality Protection Note (WQPN 22) to mitigate the potential risk of eutrophication.</p> <p>The sprayfield has been located more than 10km from the Fortescue River and over 1km from the nearest bore.</p> <p>A 50 kL external above-ground tank stores waste activated sludge (WAS) prior to disposal. This tank thickens the sludge. Tank will provide a minimum of one month sludge storage capacity. WAS tank contents will be removed by an approved operated every 2 to 3 months for disposal at an approved facility.</p>
Overland flow	Leaks and spills; Sprayfield operation	Overland flow	<p>The sprayfield has been located more than 10km from the Fortescue River and over 1km from the nearest bore.</p> <p>Final effluent quality will be low risk wastewater disinfected prior to disposal via sprayfield.</p> <p>The sprayfield is located on gravelly sandy loam, which reduces the likelihood of ponding and off-site runoff.</p>
Noise	Operation of WWTP	Air / windborne pathway	All project activities will be conducted in accordance with the <i>Environmental Protection (Noise) Regulations 1997</i> ; and Australian Standard 2436-1987: Guide to noise control on construction, maintenance and demolition sites and relevant Occupational health and safety standards;

Emission	Sources	Potential pathways	Proposed controls
			Equipment shall be fitted with appropriate noise reduction devices (where necessary) to comply with Project Health, Safety and Environment and regulatory requirements; and Mobile equipment will be regularly inspected, maintained and replaced.
Pathogens (<i>E.coli</i>)	Operation of sprayfield	Direct contact	The sprayfield will be fenced to restrict access, with signage warning of the use of recycled water for irrigation.

3.1.2 Receptors

In accordance with the *Guideline: Risk Assessment* (DWER 2020), the Delegated Officer has excluded the applicant's employees, visitors, and contractors from its assessment. Protection of these parties often involves different exposure risks and prevention strategies, and is provided for under other state legislation.

Table 1 and

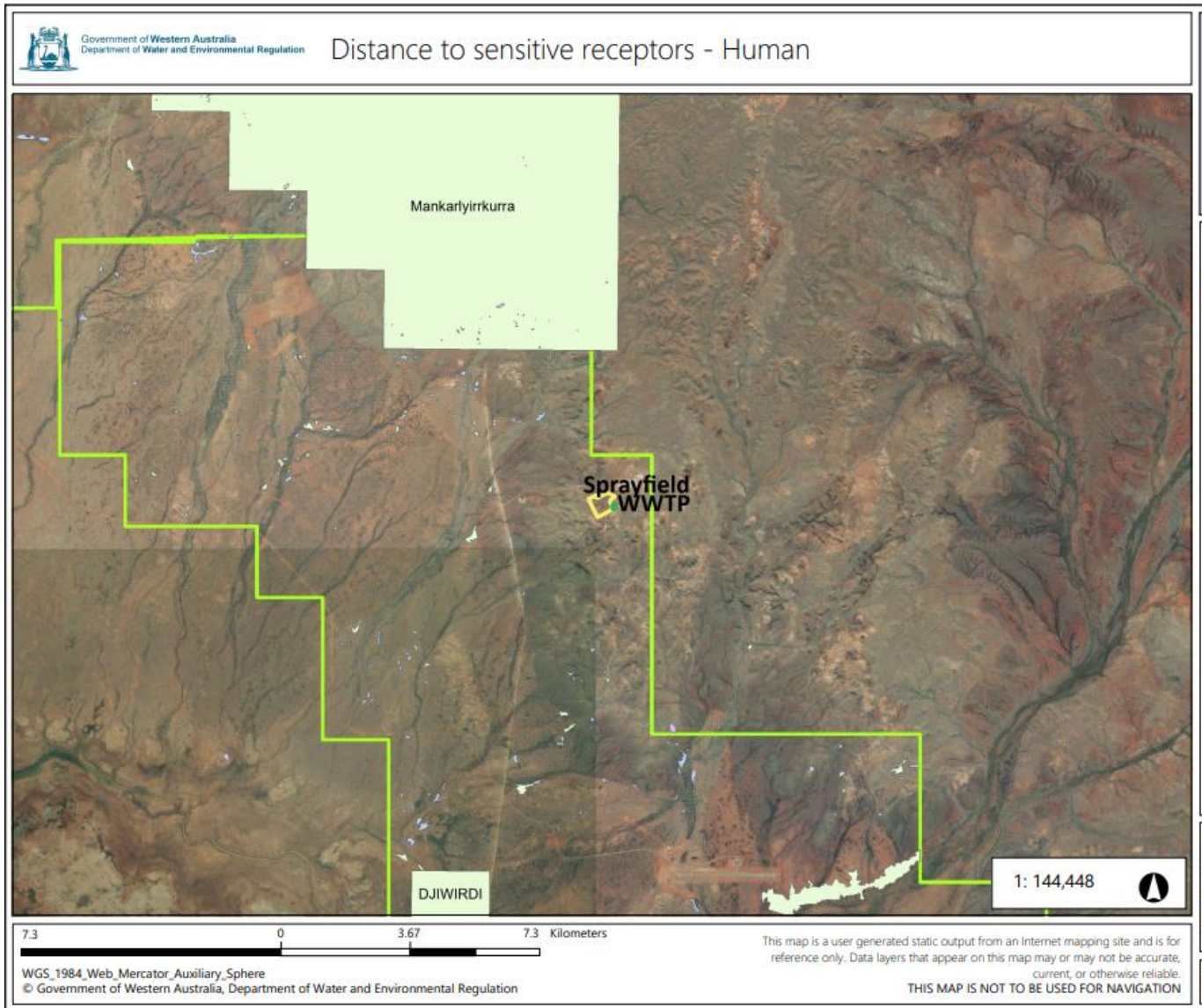


Figure 1 below provides a summary of potential human and environmental receptors that may be impacted as a result of activities upon or emission and discharges from the prescribed premises (*Guideline: Environmental Siting* (DWER 2020)).

Table 1: Sensitive human and environmental receptors and distance from prescribed activity

Human receptors	Distance from prescribed activity
Roy Hill Homestead	~25km south-west of the Premises
Registered Aboriginal Heritage Site -Mankarlyirrkurra	~ 3.8 km north of the Sprayfield
Multiple smaller registered and lodged Aboriginal Heritage Sites and Atrefacts/ scatter.	~multiple within 10 km radius of the WWTP and sprayfield areas.
Environmental receptors	Distance from prescribed activity

Fortescue Marsh -Wetland of national significance -Priority 1 Ecological Community (PEC)	~ 10km south-west of the Sprayfield
Fortescue River	~ 12km south-west of the sprayfield
Threatened Fauna	~150 recorded sightings of threatened fauna species within a 35km radius of the premises
Other waterbodies -14 mile pool; -Meecardagunna pool	~1.9km south west from the premises boundary; ~along the southern-most boundary of the premises.
Minor surface water lines	Throughout the premises boundary
Pilbara Surface Water Area	Within premises boundary
Pilbara Groundwater Area Depth to groundwater ~400mAHD	Within premises boundary

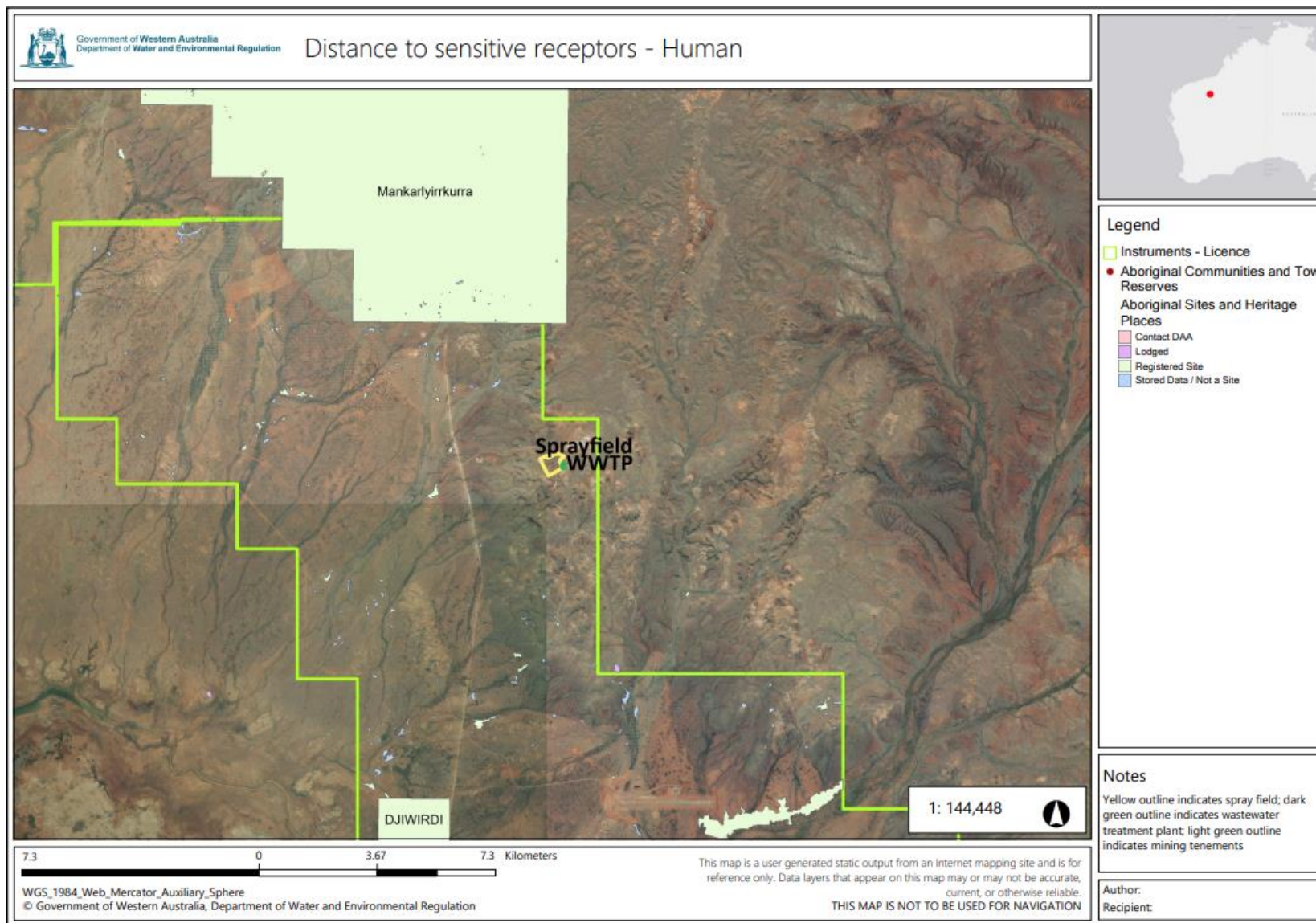


Figure 1: Distance to sensitive receptors - Human

Works Approval: W6722/2022/1

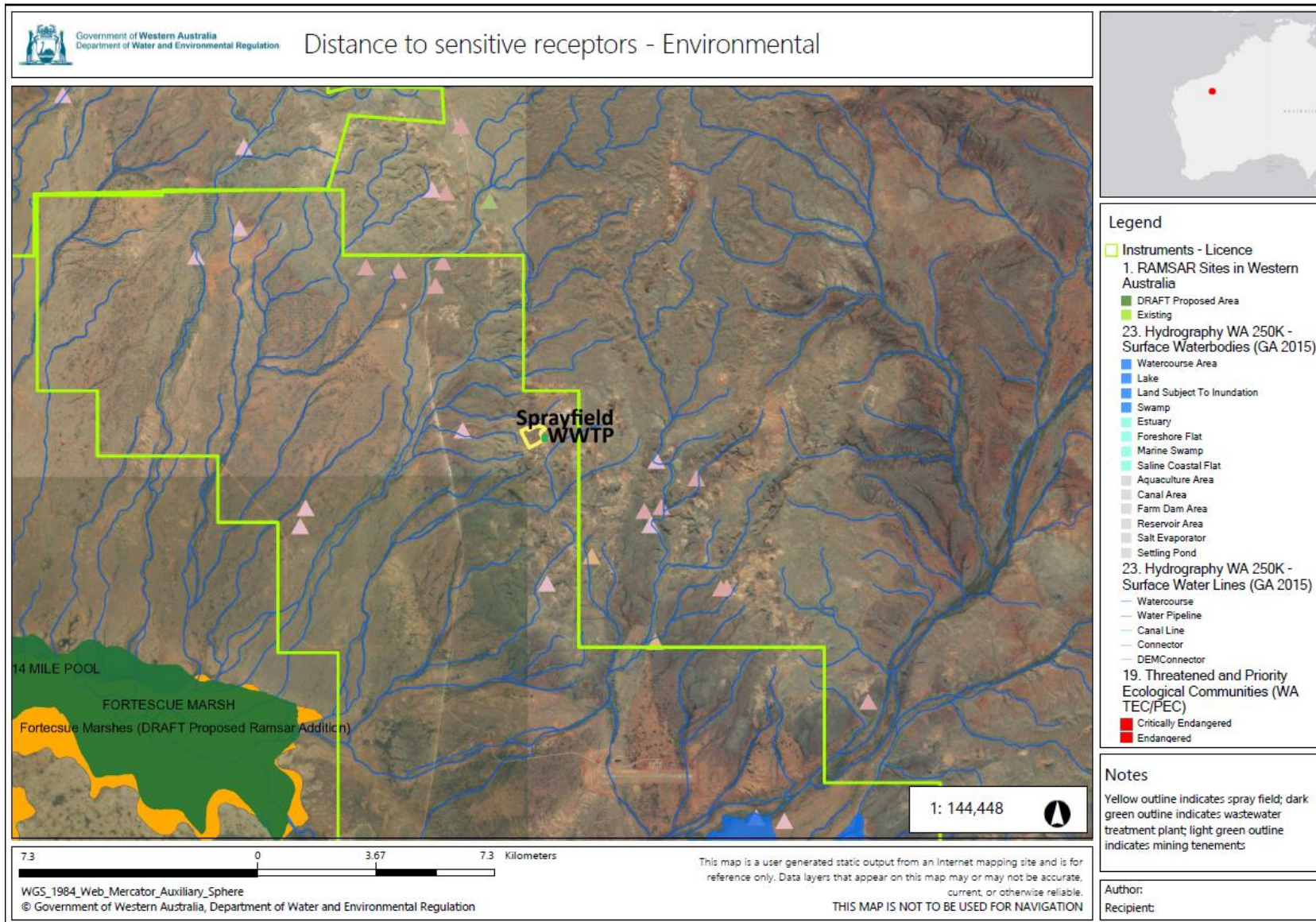


Figure 2: Distance to sensitive receptors – Environmental

Works Approval: W6722/2022/1

3.2 Risk ratings

Risk ratings have been assessed in accordance with the *Guideline: Risk Assessments* (DWER 2020) for each identified emission source and takes into account potential source-pathway and receptor linkages as identified in Section 3.1. Where linkages are in-complete they have not been considered further in the risk assessment.

Where the applicant has proposed mitigation measures/controls (as detailed in Section 3.1), these have been considered when determining the final risk rating. Where the delegated officer considers the applicant's proposed controls to be critical to maintaining an acceptable level of risk, these will be incorporated into the works approval as regulatory controls.

Additional regulatory controls may be imposed where the applicant's controls are not deemed sufficient. Where this is the case the need for additional controls will be documented and justified in Table 2.

Works approval W6722/2022/1 that accompanies this decision report authorises construction and time-limited operations. The conditions in the issued works approval, as outlined in Table 2 have been determined in accordance with *Guidance Statement: Setting Conditions* (DER 2015).

A licence is required following the time-limited operational phase authorised under the works approval to authorise emissions associated with the ongoing operation of the premises i.e. operation of the wastewater treatment plant and discharge to the sprayfield. A risk assessment for the operational phase has been included in this decision report, however licence conditions will not be finalised until the department assesses the licence application.

Table 2: Risk assessment of potential emissions and discharges from the premises during construction, commissioning and operation

Risk events					Risk rating ¹ C = consequence L = likelihood	Applicant controls sufficient?	Conditions ² of works approval	Justification for additional regulatory controls
Sources / activities	Potential emission	Potential pathways and impact	Receptors	Applicant controls				
Construction								
Construction and installation of WWTP and associated infrastructure Construction of expanded sprayfield area.	Dust	Air/windborne pathway causing impacts to ecosystem health	Fortescue Marsh; Fortescue River; Threatened fauna	Refer to Section 3.1	C = Slight L = Unlikely Low Risk	Y	Condition 1, Table 1, Row 1, (i) Condition 4	The Delegated Officer considers the inclusion of condition to ensure that water is used for dust suppression during construction – as indicated by the applicants' controls, adequately mitigates the risk of impacts dust emissions given the significant separation to receptors.
	Noise	Air / windborne pathway causing impacts to health and amenity	N/A (Residences 25km from the premises)		N/A (no receptor present)	Y	N/A	The Delegated Officer considers the risks of noise emissions can be adequately managed under the <i>Environmental Protection (Noise) Regulations 1997</i>
	Windblown waste	Air/windborne pathway causing impacts to amenity and ecosystem health	Fortescue Marsh; Fortescue River; Threatened fauna		C = Slight L = Unlikely Low Risk	N	Condition 2	The Delegated Officer considers the addition of condition 2 to the works approval mitigates the risk of windblown waste impacting the surrounding receptors.

Works Approval: W6722/2022/1

Risk events					Risk rating ¹ C = consequence L = likelihood	Applicant controls sufficient?	Conditions ² of works approval	Justification for additional regulatory controls
Sources / activities	Potential emission	Potential pathways and impact	Receptors	Applicant controls				
	Hydrocarbon spills	Infiltration into the soil causing contamination			C = Slight L = Unlikely Low Risk	N	Conditions 5 and 6	The Delegated Officer considers the addition of conditions 5 and 6 are sufficient to mitigate the risk of hydrocarbon spills
	Potentially contaminated stormwater	Overland flow causing impacts to health and amenity			C = Slight L = Unlikely Low Risk	N	Condition 3	The Delegated Officer considers the addition of condition 3 sufficient to mitigate the risk of contaminated stormwater
Commissioning								
Commissioning of WWTP and expanded sprayfield	Dust	Air / windborne pathway causing impacts to health and amenity	Residences 25km from the premises	Refer to Section 3.1	C = Slight L = Unlikely Low Risk	N/A	N/A	N/A
	Noise				C = Slight L = Unlikely Low Risk	Y	N/A	The Delegated Officer considers the risks of noise emissions can be adequately managed under the <i>Environmental Protection (Noise) Regulations 1997</i>
	Odour				C = Slight L = Unlikely Low Risk	Y	N/A	The Delegated Officer considers the distance to sensitive receptors sufficient to mitigate the risk of odour emissions

Risk events					Risk rating ¹ C = consequence L = likelihood	Applicant controls sufficient?	Conditions ² of works approval	Justification for additional regulatory controls
Sources / activities	Potential emission	Potential pathways and impact	Receptors	Applicant controls				
	Potentially contaminated stormwater	Overland flow causing impacts to health and amenity	Fortescue Marsh; Fortescue River;		C = Minor L = Unlikely Medium Risk	N	Condition 3	The Delegated Officer considers the addition of condition 3 is sufficient to mitigate the risk of potentially contaminated stormwater.
	Liquid waste spills/discharge	Overland flow and direct discharge	Threatened fauna		C = Minor L = Possible Medium Risk	N	Conditions 5 and 6	The Delegated Officer considers the addition of conditions 5 and 6 is sufficient to mitigate the risk of spills and leaks.
	Treated wastewater discharged to land	Overland flow causing impacts to ecosystem health and amenity	Fortescue Marsh; Fortescue River; Threatened fauna Groundwater		C = Minor L = Possible Medium Risk	Y	Condition 1, Table 1, Row's 1 and 2	The Delegated Officer has determined that the inclusion of applicant controls in the construction requirements of the WWTP and sprayfield adequately mitigate the risk of overland flow of treated wastewater. The Delegated Officer has used WQPN 22 to determine the minimum required sprayfield size to accommodate 610m ³ /day of effluent is 14.84ha. As such has determined the new sprayfield size of 19.3ha is

Works Approval: W6722/2022/1

Risk events					Risk rating ¹ C = consequence L = likelihood	Applicant controls sufficient?	Conditions ² of works approval	Justification for additional regulatory controls
Sources / activities	Potential emission	Potential pathways and impact	Receptors	Applicant controls				
								appropriate to mitigate the risk of eutrophication and ponding.
Operation (including time-limited-operations operations)								
Operation of WWTP	Noise	Air / windborne pathway causing impacts to health and amenity	N/A (Residences 25km from the premises)	Refer to section 3.1	N/A	Y	N/A	The Delegated Officer considers the risks of noise emissions can be adequately managed under the <i>Environmental Protection (Noise) Regulations 1997</i>
	Odour				C = Slight L = Unlikely Low Risk	Y	N/A	The Delegated Officer considers the distance to sensitive receptors sufficient to mitigate the risk of odour emissions
Operation of Sprayfield	Potentially contaminated stormwater	Overland flow causing impacts to health and amenity	Fortescue Marsh; Fortescue River;		C = Minor L = Possible Medium Risk	N	Condition 3	The Delegated Officer considers the addition of condition 3 is sufficient to mitigate the risk of potentially contaminated stormwater.
	Liquid waste spills/discharge	Overland flow and direct discharge	Threatened fauna		C = Minor L = Unlikely Medium Risk	N	Conditions 5 and 6	The Delegated Officer considers the addition of conditions 5 and 6 is sufficient to mitigate the risk of spills and leaks.

Risk events					Risk rating ¹ C = consequence L = likelihood	Applicant controls sufficient?	Conditions ² of works approval	Justification for additional regulatory controls
Sources / activities	Potential emission	Potential pathways and impact	Receptors	Applicant controls				
	Treated wastewater discharged to land	Overland flow causing impacts to ecosystem health and amenity	Fortescue Marsh; Fortescue River; Threatened fauna Groundwater		C = Minor L = Possible Medium Risk	Y	Condition 1, Table 1, Row's 1 and 2	The Delegated Officer has determined that the inclusion of applicant controls in the construction requirements of the WWTP and sprayfield adequately mitigate the risk of overland flow of treated wastewater.

Note 1: Consequence ratings, likelihood ratings and risk descriptions are detailed in the *Guideline: Risk Assessments* (DWER 2020).

Note 2: Proposed applicant controls are depicted by standard text. **bold and underline text** depicts additional regulatory controls imposed by department.

4. Consultation

Table 3 provides a summary of the consultation undertaken by the department.

Table 3: Consultation

Consultation method	Comments received	Department response
Application advertised on the department's website on 21 September 2022	None received	N/A
Applicant was provided with draft documents on 13 December 2022	Applicant responded on 19 December 2022 providing further information and waiving remaining comment period	DWER incorporated the information provided.

5. Conclusion

Based on the assessment in this decision report, the delegated officer has determined that a works approval will be granted, subject to conditions commensurate with the determined controls and necessary for administration and reporting requirements.

References

1. Department of Environment Regulation (DER) 2015, *Guidance Statement: Setting Conditions*, Perth, Western Australia.
2. Department of Water and Environmental Regulation (DWER) 2020, *Guideline: Environmental Siting*, Perth, Western Australia.
3. DWER 2020, *Guideline: Risk Assessments*, Perth, Western Australia.

Appendix 2: Application validation summary

SECTION 1: APPLICATION SUMMARY (as updated from validation checklist)						
Application type						
Works approval	<input checked="" type="checkbox"/>	Existing licence L8621/2011/1				
Licence	<input type="checkbox"/>	Relevant works approval number:	Licence	<input type="checkbox"/>	Relevant works approval number:	
		Has the works approval been complied with?			Yes <input type="checkbox"/> No <input type="checkbox"/>	
		Has time limited operations under the works approval demonstrated acceptable operations?			Yes <input type="checkbox"/> No <input type="checkbox"/> N/A <input type="checkbox"/>	
		Environmental Compliance Report / Critical Containment Infrastructure Report submitted?			Yes <input type="checkbox"/> No <input type="checkbox"/>	
		Date Report received:				
Renewal	<input type="checkbox"/>	Current licence number:	Renewal			
Amendment to works approval	<input type="checkbox"/>	Current works approval number:	Amendment to works approval			
Amendment to licence	<input type="checkbox"/>	Current licence number:	Amendment to licence			
		Relevant works approval number:		N/A	Relevant works approval number:	
Registration	<input type="checkbox"/>	Current works approval number:	Registration	<input type="checkbox"/>	Current works approval number:	
Date application received		25/7/22				
Applicant and Premises details						
Applicant name/s (full legal name/s)		Roy Hill Iron Ore Pty Ltd				
Premises name		Roy Hill Mine				
Premises location		M46/518 – Roy Hill Iron Ore Pty Ltd; M46/519 – Roy Hill Iron Ore Pty Ltd				
Local Government Authority		Shire of East Pilbara				
Application documents						
HPCM file reference number:		DER2018/001042-7~77				
Key application documents (additional		Legal Authority to sign;				

SECTION 1: APPLICATION SUMMARY (as updated from validation checklist)	
to application form):	Supporting Document
Scope of application/assessment	

SECTION 1: APPLICATION SUMMARY (as updated from validation checklist)

<p>Summary of proposed activities or changes to existing operations.</p>	<p>Works approval</p> <p>Construction and commissioning of a proposed WWTP and expansion to the current sprayfield which are required to accommodate the expansion of the Roy Hill Mine Permanent Village (MPV).</p> <p>The current MPV WWTP has the capacity to treat up to 510m³/day and discharges to a 16ha sprayfield.</p> <p>Proposing to construct an additional 100m³/day WWTP and expand the sprayfield to 19.3ha, increasing total capacity to 610m³/day. The 100m³/day WWTP will be constructed adjacent to the existing MPV WWTP.</p> <p>The proposed WWTP will receive wastewater from accommodation facilities and treated water from the kitchen laundry and shower facilities. The wastewater will be treated in a containerised treatment plant before being discharged to the sprayfield area</p> <p>The Reverse Osmosis plant located within the MPV will be upgraded to supply potable water to the additional camp facilities. Once upgraded the RO plant will still produce less than 0.5 gigalitres of permeate per annum and is not considered a prescribed activity. Permeate will be directed to a lined turkey's nest or transfer pond prior to reuse for dust suppression.</p> <p>The SBR wastewater treatment plant comprises of the below major equipment items;</p> <ul style="list-style-type: none"><input type="checkbox"/> 2x 2.5mm bar inlet screens.<input type="checkbox"/> x 50m³ balance tanks.<input type="checkbox"/> x Balance pumps.<input type="checkbox"/> x Aerators.<input type="checkbox"/> x 49m³ SBR Tanks.<input type="checkbox"/> 2 x Decant pump.<input type="checkbox"/> 2 x Sludge Pump.<input type="checkbox"/> 2 x 11m³ Irrigation Tank.<input type="checkbox"/> 50m³ Sludge Tank.<input type="checkbox"/> 2 x Irrigation pump.<input type="checkbox"/> 2 x Recirculation pump.<input type="checkbox"/> 2 x Chemical dosing systems including:<ul style="list-style-type: none">o 20L Poly Aluminium Chloride (PAC) (20%)o 20L Sucroseo 20L Sodium hypochlorite (12.5%) <p>Construction is scheduled to commence in December 2022.</p> <p>Application indicates that this will involve a Cat 85 and 54 however as the new WWTP capacity is adding 100 to the existing 510 (and the threshold for cat 85 is LESS than 100m³/day) both activities fall under Cat 54.</p>
--	--

SECTION 1: APPLICATION SUMMARY (as updated from validation checklist)

Category number/s (activities that cause the premises to become prescribed premises)

Table 1: Prescribed premises categories

Prescribed premises category and description	Proposed production and design capacity
Category 54: Sewage Facility : Premises – (a) on which sewage is treated (excluding septic tanks); or (b) from which treated sewage is discharged onto land or into waters	610m3/day

Legislative context and other approvals

Has the applicant referred, or do they intend to refer, their proposal to the EPA under Part IV of the EP Act as a significant proposal?	Yes <input type="checkbox"/> No <input checked="" type="checkbox"/>	Referral decision No: Managed under Part V <input type="checkbox"/> Assessed under Part IV <input type="checkbox"/>
Does the applicant hold any existing Part IV Ministerial Statements relevant to the application?	Yes <input checked="" type="checkbox"/> No <input type="checkbox"/>	Ministerial Statements (MS) 824 and 829 were issued under Part IV of the Environmental Protection Act 1986 (EP Act) in December 2009 and March 2010, respectively
Has the proposal been referred and/or assessed under the EPBC Act?	Yes <input type="checkbox"/> No <input checked="" type="checkbox"/>	Reference No:
Has the applicant demonstrated occupancy (proof of occupier status)?	Yes <input checked="" type="checkbox"/> No <input type="checkbox"/>	Certificate of title <input type="checkbox"/> General lease <input type="checkbox"/> Expiry: Mining lease / tenement <input checked="" type="checkbox"/> Expiry: Other evidence <input type="checkbox"/> Expiry:
Has the applicant obtained all relevant planning approvals?	Yes <input checked="" type="checkbox"/> No <input type="checkbox"/> N/A <input type="checkbox"/>	Not stated
Has the applicant applied for, or have an existing EP Act clearing permit in relation to this proposal?	Yes <input type="checkbox"/> No <input checked="" type="checkbox"/>	No clearing is proposed.
Has the applicant applied for, or have an existing CAWS Act clearing licence in relation to this proposal?	Yes <input type="checkbox"/> No <input checked="" type="checkbox"/>	No clearing is proposed.

SECTION 1: APPLICATION SUMMARY (as updated from validation checklist)

<p>Has the applicant applied for, or have an existing RIWI Act licence or permit in relation to this proposal?</p>	<p>Yes <input type="checkbox"/> No <input checked="" type="checkbox"/></p>	<p>Licence / permit not required.</p>
<p>Does the proposal involve a discharge of waste into a designated area (as defined in section 57 of the EP Act)?</p>	<p>Yes <input checked="" type="checkbox"/> No <input type="checkbox"/></p>	<p>Name: Pilbara Surface Water Area AND Pilbara Groundwater Area Type: Proclaimed Groundwater Area/Surface Water Area Has Regulatory Services (Water) been consulted? Yes <input type="checkbox"/> No <input checked="" type="checkbox"/> N/A <input type="checkbox"/> Regional office: North West</p>
<p>Is the Premises situated in a Public Drinking Water Source Area (PDWSA)?</p>	<p>Yes <input type="checkbox"/> No <input checked="" type="checkbox"/></p>	<p>Name: N/A</p>
<p>Is the Premises subject to any other Acts or subsidiary regulations (e.g. <i>Dangerous Goods Safety Act 2004</i>, <i>Environmental Protection (Controlled Waste) Regulations 2004</i>, <i>State Agreement Act xxxx</i>)</p>	<p>Yes <input type="checkbox"/> No <input checked="" type="checkbox"/></p>	
<p>Is the Premises within an Environmental Protection Policy (EPP) Area?</p>	<p>Yes <input type="checkbox"/> No <input checked="" type="checkbox"/></p>	
<p>Is the Premises subject to any EPP requirements?</p>	<p>Yes <input type="checkbox"/> No <input checked="" type="checkbox"/></p>	
<p>Is the Premises a known or suspected contaminated site under the <i>Contaminated Sites Act 2003</i>?</p>	<p>Yes <input type="checkbox"/> No <input checked="" type="checkbox"/></p>	<p>Classification: N/A Date of classification: N/A</p>