



Application for Works Approval

Part V Division 3 of the *Environmental Protection Act 1986*

Works Approval Number	W6733/2022/1
Applicant	The Western Australian Land Authority
File number	DER2022/000401
Premises	<p>Ocean Reef Marina Reclamation Earthworks Hodges Drive, Ocean Reef</p> <p>Legal description Part of Lot 15446 on Deposited Plan P040340, Lot 555 on Deposited Plan P402198 and Lot 1029 on Deposited Plan 57604, JOONDALUP.</p> <p>As defined by the premises map attached to the issued works approval</p>
Date of report	30 January 2023
Decision	Works approval granted

A/Senior Manager, Resource Industries

REGULATORY SERVICES

an officer delegated under section 20 of the *Environmental Protection Act 1986* (WA)

Table of Contents

1. Decision summary	1
2. Scope of assessment	1
2.1 Regulatory framework	1
2.2 Application summary and overview of premises	1
2.3 Part IV of the EP Act	1
2.4 Other approvals	1
2.5 Noise management Plan	2
3. Risk assessment	2
3.1 Source-pathways and receptors	2
3.1.1 Emissions and controls	2
3.1.2 Receptors	4
3.2 Risk ratings	9
4. Consultation	13
5. Conclusion	13
References	13
Appendix 1: Summary of stakeholder comments	15
Appendix 2: Summary of applicant’s comments on risk assessment and draft conditions	17
Appendix 3: Application validation summary	19
Table 1: Measured noise levels for the Ocean Reef Marina Development	2
Table 2: Proposed applicant controls	2
Table 3: Sensitive human and environmental receptors and distance from prescribed activity	5
Table 4: Risk assessment of potential emissions and discharges from the premises during construction	10
Table 5: Consultation	13
Figure 1: Distance to sensitive receptors (residences within 500 m from proposed location of the crushing/screening plant shown in blue)	7
Figure 2: Threatened flora and fauna - distance from premises boundary	8

1. Decision summary

This decision report documents the assessment of potential risks to the environment and public health from emissions and discharges during the construction and operation of the premises. As a result of this assessment, works approval W6733/2022/1 has been granted.

2. Scope of assessment

2.1 Regulatory framework

In completing the assessment documented in this decision report, the Department of Water and Environmental Regulation (the department; DWER) has considered and given due regard to its regulatory framework and relevant policy documents which are available at <https://dwer.wa.gov.au/regulatory-documents>.

2.2 Application summary and overview of premises

On 11 August 2022, the Western Australian Land Authority (the applicant) submitted an application for a works approval to the department under section 54 of the *Environmental Protection Act 1986* (EP Act).

The application relates to a proposal to construct and operate crushing and screening infrastructure at the premises in the city of Joondalup, as part of the of the Ocean Reef Marina Reclamation Earthworks for the Ocean Reef Marina Project.

The premises relates to the category 12 and assessed production capacity under Schedule 1 of the *Environmental Protection Regulations 1987* (EP Regulations) which are defined in works approval W6733/2022/1. The infrastructure and equipment relating to the premises category and any associated activities which the department has considered in line with *Guideline: Risk Assessments* (DWER 2020) are outlined in works approval W6733/2022/1.

2.3 Part IV of the EP Act

The Ocean Reef Marina proposal was referred to the Environmental Protection Authority (EPA) under Part IV of the EP Act (reference 14-794694). The referral included the Improvement Scheme for the Ocean Reef Marina and the Metropolitan Region Scheme Amendment 1270/4, both were referred but not assessed by the EPA. This scheme will impact the environmental factors: Flora and Vegetation, Terrestrial Fauna, Benthic Communities and Habitats, Coastal Processes, Marine Environmental Quality, and Social Surrounds (EPA Ref: CMS17771). These impacts have been addressed through Metropolitan Region Scheme Amendment 1270/41 for the land component and the Ministerial Statement 1107 providing implementation conditions for the marina construction and operation (EPA Ref: CMS17771). The EPA advised that remaining impacts of the mentioned environmental factors are addressed by the Ministerial Statement 1107 through the Negotiated Planning Outcome.

2.4 Other approvals

The Western Australian Planning Commission gazetted the “Ocean Reef Improvement Scheme No.1” on 30 September 2020 (WAPC, 2020). This scheme “provides land use and development controls over the scheme area, and provides heads of power to prepare Improvement Scheme policies (including design guidelines) and local development” (Barnett, 2020).

The applicant has an existing *Rights in Water and Irrigation Act 1914* licence (GWL206718) for water requirements on the premises, including dust suppression activities.

The applicant has authorisation to conduct clearing of native vegetation via clearing permit CPS 8787/1.

2.5 Noise management Plan

An initial Noise management Plan (NMP) was provided by the applicant, for the Ocean Reef Marina Development, dated 28 September 2021. The NMP detailed a noise assessment for the Southern Breakwater (EcoAcustics, 2021), which is located close to the proposed premises. The Southern Breakwater is further west than the proposed premises and only will be considered as a baseline for noise with the application. The noise levels observed (Table 1) are within the assigned noise levels according to Regulation 8 of The *Environmental Protection (Noise) Regulations 1997* (Noise Regulations). The Delegated Officer notes that this site is classified as a Construction Site under Regulation 13 of the Noise Regulations, and therefore the assigned noise levels do not apply to the reclamation works. However, in relation to the proposed category 12 crushing and screening activities, the Delegated Officer considers this as operational noise; the crushing and screening plant will be operated under separate approvals to support the construction / reclamation works. Therefore, the assigned noise levels specified in the Noise Regulations do apply to the proposed crushing and screening activities.

Table 1: Measured noise levels for the Ocean Reef Marina Development

Location	Measured Noise Level, dB(A)	
	L _{A10}	L _{Amax}
Ocean Reef Rd (opposite South Site)	49 to 50	58 to 59
Reacher Place (South Site)	47 to 50	53 to 55
Fleetwing Heights (ambient noise without construction activities)	47 to 50	53 to 55

3. Risk assessment

The department assesses the risks of emissions from prescribed premises and identifies the potential source, pathway and impact to receptors in accordance with the *Guideline: Risk Assessments* (DWER 2020).

To establish a risk event there must be an emission, a receptor which may be exposed to that emission through an identified actual or likely pathway, and a potential adverse effect to the receptor from exposure to that emission (Table1).

3.1 Source-pathways and receptors

3.1.1 Emissions and controls

The key emissions and associated actual or likely pathway during premises operation which have been considered in this decision report are detailed in Table 2 below. Table 2 also details the control measures the applicant has proposed to assist in controlling these emissions, where necessary.

Table 2: Proposed applicant controls

Emission	Sources	Potential pathways	Proposed controls
Construction			
Dust	Crushing of material, vehicle movements,	Air / windborne	1. Stockpiles and equipment will be positioned where their impact on sensitive

Emission	Sources	Potential pathways	Proposed controls
	lift-off from stockpiles and/or stored product, earthworks etc.	pathway	<p>receptors is minimised;</p> <ol style="list-style-type: none"> 2. Stockpile numbers and size (as relevant to surface area) will be limited; 3. A water cart or other dust suppression systems (e.g., sprinklers) and access to sufficient water supply will be maintained on-site; 4. On unsealed roads, measures will be implemented to reduce the generation of dust, including using a water cart or chemical stabilisers; 5. Vehicle speeds will be limited to less than 25 km/hr on unconsolidated or unsealed road areas; 6. Sprinkler/misting systems and/or dust curtains will be fitted on the crusher and screen; 7. Stockpile exterior surfaces will be maintained in a damp state to prevent dust lift-off; 8. Vehicles transporting material out of the premises will be covered; 9. Vehicles leaving the premises will be free from loose mud, dirt, and sediment to prevent dust on public roads (wheel washes are used at the site entrance/exit); 10. General housekeeping, such as sweeping down paved roads (including public roads) and other areas prone to dust lift-off, will be regularly undertaken (at least fortnightly); 11. Wind direction and strength will be observed and dust generating activities suspended or limited when visible dust is caused by strong winds or blown in the direction of nearby sensitive receptors
Noise	Crushing and screening of material	Air / windborne pathway	<ol style="list-style-type: none"> 1. Equipment will be positioned where its impact on receptors is minimised; 2. Work hours will be limited to daytime (0700 to 1800, Monday to Saturday); 3. Mufflers and broadband reversing alarms (croakers/quackers) will be installed on all vehicles and machinery; 4. Noise bunds/screens for specific noise-generating equipment will be installed around the premises if required; 5. Vehicles, equipment, and machinery will be regularly inspected and maintained, and

Emission	Sources	Potential pathways	Proposed controls
			<p>operated effectively;</p> <p>6. Vehicles, equipment, and machinery will be turned off when not in use;</p> <p>7. The operation will be carried out following AS 2436-2010 Guide to noise and vibration control on construction, demolition and maintenance sites;</p> <p>8. Staff will be inducted and trained, and reminded at toolbox meetings to minimise, where possible, noise emissions, during operation of plant and equipment;</p> <p>9. A complaints register will be established;</p> <p>10.Noise monitoring will be carried out if deemed necessary in response to complaints or other requests</p>
Discharge of liquid waste (contaminated stormwater, hydrocarbons)	Operational areas, fuel storage	Runoff, seepage to ground	<p>1. Uncontaminated stormwater will be diverted around the operational area. This may be achieved using surface-grade changes, bunds, interceptor drains, piping and other drainage systems;</p> <p>2. Storage of environmentally hazardous materials, including fuel, oil, or other hydrocarbons in quantities greater than 200 L will have an engineered containment system;</p> <p>3. Erosion and sediment control protocols will be implemented if required;</p> <p>4. A spill kit will be located adjacent to refuelling areas;</p> <p>5. Spills of environmentally hazardous materials, including fuel, oil, or other hydrocarbons, inside or outside an engineered containment system will be recovered or removed and disposed of all material used for the recovery, removal, and/or disposal of environmentally hazardous materials will be stored in an impermeable container before disposal at an appropriately authorised facility</p>

3.1.2 Receptors

In accordance with the *Guideline: Risk Assessment* (DWER 2020), the Delegated Officer has excluded the applicant's employees, visitors, and contractors from its assessment. Protection of these parties often involves different exposure risks and prevention strategies and is provided for under other state legislation.

Table 3 and below provides a summary of potential human and environmental receptors that may be impacted as a result of activities upon or emission and discharges from the prescribed premises (*Guideline: Environmental Siting* (DWER 2020)).

Table 3: Sensitive human and environmental receptors and distance from prescribed activity

Human receptors		Distance from prescribed activity
Closest residential receptors (<i>Figure 1</i>)		300 m from crushing and screening machinery, 155 residential receptors within 500 m radius from proposed machinery location.
Ocean View Guest House		400 m north from crushing and screening machinery
Environmental receptors		Distance from prescribed activity
Bushforever site number 325		80 m west of premises boundary
Ecological linkage		Within the premises
Biological Component (<i>Figure 2</i>)	<i>Grevillea sp. Ocean Reef</i> (D. Pike Joon 4) Biodiversity Conservation Act 2016: Conservation Code Priority One	210 m east of the premises boundary
	<i>Synemon gratiosa</i> (Graceful Sun Moth) Department of Biodiversity, Conservation and Attractions (DBCAs) List 7: Conservation Code Priority 4	100 m and surrounding the premises
	<i>Calyptorhynchus latirostris</i> (Carnaby's cockatoo) Environment Protection and Biodiversity Conservation Act 1999 (EPBC) status: Endangered DBCAs List 7: Endangered Department of Climate Change, Energy, the Environment and Water (DCCEEW): The location is a feeding habitat and may be regulated	300 m and surrounding the premises
	<i>Thalasseus bergii</i> (The greater crested tern) EPBC status: Migratory DBCAs List 7: Migratory	300 m and surrounding the premises
Aboriginal Sites and Heritage Places: Ocean Reef Limestone Ridge (ID: 38691, water source)		Within the premises boundary. This site was subject to an application for registration as an Aboriginal site, but it was determined that did not meet the relevant definitions, according to the applicant.
Groundwater		Perth Groundwater Map indicates that groundwater is between 1 – 14 m

	below ground level (bgl)
--	--------------------------

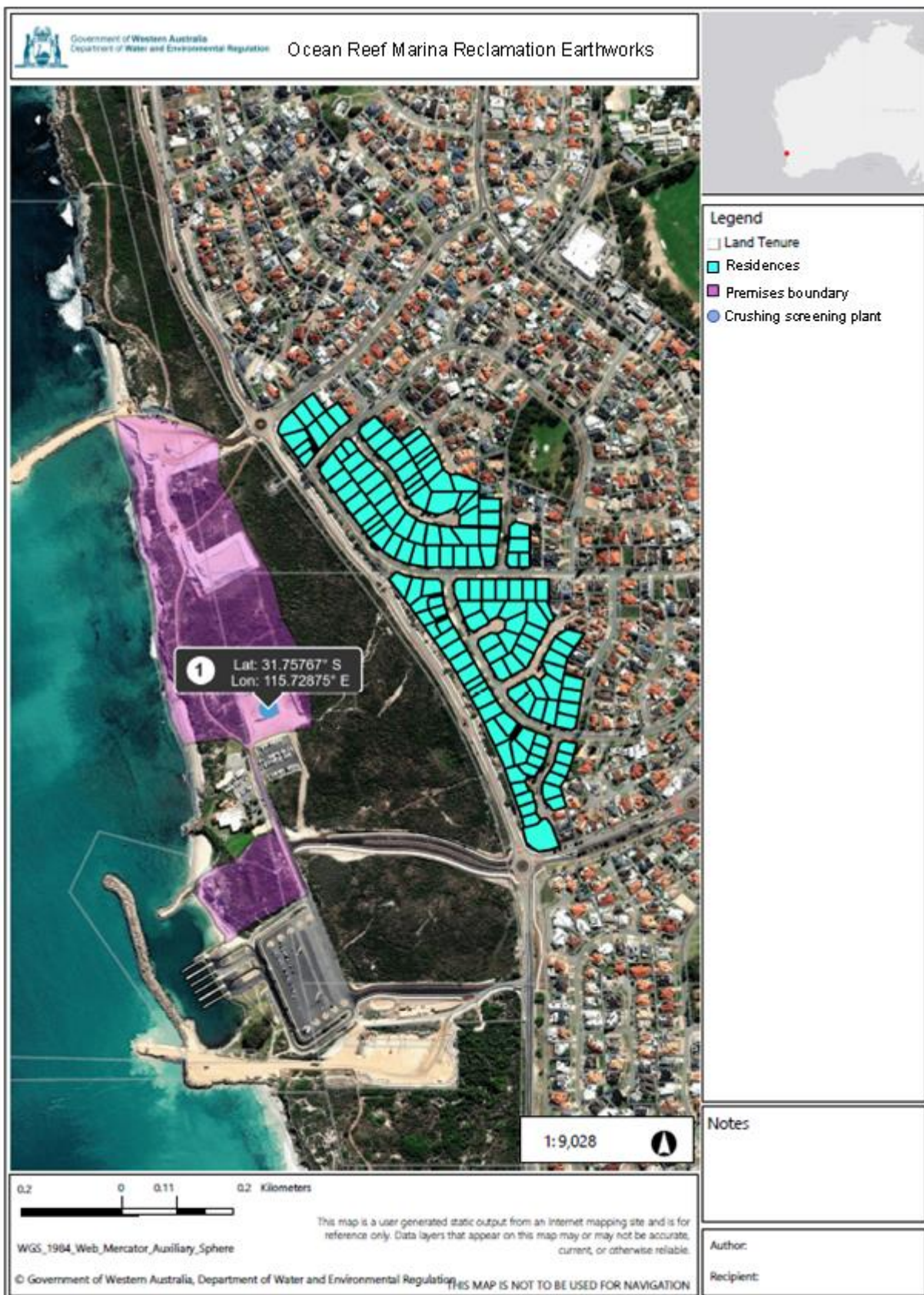


Figure 1: Distance to sensitive receptors (residences within 500 m from proposed location of the crushing/screening plant shown in blue)



Figure 2: Threatened flora and fauna - distance from premises boundary

3.2 Risk ratings

Risk ratings have been assessed in accordance with the *Guideline: Risk Assessments* (DWER 2020) for each identified emission source and takes into account potential source-pathway and receptor linkages as identified in Section 3.1. Where linkages are in-complete they have not been considered further in the risk assessment.

Where the applicant has proposed mitigation measures/controls (as detailed in Section 3.1), these have been considered when determining the final risk rating. Where the delegated officer considers the applicant's proposed controls to be critical to maintaining an acceptable level of risk, these will be incorporated into the works approval as regulatory controls.

Additional regulatory controls may be imposed where the applicant's controls are not deemed sufficient. Where this is the case the need for additional controls will be documented and justified in Table 4.

Works approval W6733/2022/1 that accompanies this decision report authorises construction only. The conditions in the issued works approval, as outlined in Table 4 have been determined in accordance with *Guidance Statement: Setting Conditions* (DER 2015).

Table 4: Risk assessment of potential emissions and discharges from the premises during construction

Risk events					Risk rating ¹	Applicant controls sufficient?	Conditions ² of works approval	Justification for additional regulatory controls
Sources / activities	Potential emission	Potential pathways and impact	Receptors	Applicant controls	C = consequence L = likelihood			
Construction								
Site establishment works Installation and construction of: <ul style="list-style-type: none"> mobile crushing and screening plant and associated equipment site office and associated infrastructure Vehicle movements	Dust	Air / windborne pathway causing impacts to health and amenity	Residences located 300 m and 500 m from screening and crushing machinery	Refer to Section 3.1	C = Minor L = Unlikely Medium Risk	Yes	Condition 1, Table 1: Design and construction/installation requirements (Dust Controls)	In addition to conditioning the Applicant's controls, the department has included an additional control in relation to dust emissions. The applicant must ensure that during construction and time-limited operation that no visible dust from crushing and screening activities crosses the boundary of the premises.
	Noise			Refer to Section 3.1	C = Minor L = Possible Medium Risk	Yes		Condition 1, Table 1: Design and construction/installation requirements (Noise Controls)
Discharge of liquid waste (contaminated stormwater, hydrocarbons) during construction	Runoff, direct discharge	Seepage to soils and groundwater causing pollution	Soils and groundwater on premises Bushforever site located 80m east	Refer to Section 3.1	C = Moderate L = Unlikely Medium Risk	Yes	Condition 1, Table 1: Design and construction/installation requirements (Direct discharge controls)	N/A

Risk events					Risk rating ¹ C = consequence L = likelihood	Applicant controls sufficient?	Conditions ² of works approval	Justification for additional regulatory controls
Sources / activities	Potential emission	Potential pathways and impact	Receptors	Applicant controls				
Time-limited Operation and Operation								
Operating a mobile crushing and screening plant (i.e., crushing, screening, unloading/loading, and stockpiling of material), Vehicle movements	Dust	Air / windborne pathway causing impacts to health and amenity	Residences located 300 m and 500 m from screening and crushing machinery	Refer to Section 3.1	C = Minor L = Possible Medium Risk	Yes	Conditions 6, 7 and 8: Operational requirements during Time Limited Operations (Dust Controls)	Due to proximity to nearest receptors, conditions 6, 7 and 8 have been added regulatory controls to manage dust emissions from crushing and screening plant.
	Noise			Refer to Section 3.1	C = Minor L = Possible Medium Risk	No	Conditions 6 and 9: Operational requirements during Time Limited Operations (Noise Controls) Conditions 10, 11, 12 and 13 Noise monitoring conditions. Condition 14 and 15: Reporting requirement	Due to proximity to nearest receptors, conditions 6, 9, 10, 11, 12, 13, 14 and 15 have been added as additional regulatory controls to ensure noise levels during operation do not present an unacceptable risk to nearby receptors In addition, the applicant must ensure that operating times for crushing and screening plant occur between 7:00am to 6:00pm Monday to Saturday.
Discharge of liquid waste (contaminated stormwater, hydrocarbons) during operation of crushing and screening plant	Runoff, direct discharge	Seepage to soils and groundwater causing pollution	Soils and groundwater on premises Bushforever site located 80m east	Refer to Section 3.1	C = Moderate L = Possible Medium Risk	No	Condition 6: Operational requirement to refuelling in hardstand surfaces (Direct discharge control)	In addition to conditioning the Applicant's controls, the department has included an additional control. The Delegated Officer notes that the Premises is located on sandy soils, which are of considerable

Risk events					Risk rating ¹ C = consequence L = likelihood	Applicant controls sufficient?	Conditions ² of works approval	Justification for additional regulatory controls
Sources / activities	Potential emission	Potential pathways and impact	Receptors	Applicant controls				
								permeability, and the groundwater level is shallow (1 – 14m bgl). Consequently, storage of environmentally hazardous materials must occur in an engineered containment system and refuelling must be performed on hardstand surfaces.

Note 1: Consequence ratings, likelihood ratings and risk descriptions are detailed in the *Guideline: Risk Assessments* (DWER 2020).

Note 2: Proposed applicant controls are depicted by standard text. **Bold and underline text** depicts additional regulatory controls imposed by department.

4. Consultation

Table 5 provides a summary of the consultation undertaken by the department.

Table 5: Consultation

Consultation method	Comments received	Department response
Residents within 500m radius to premises - Nine responses were received	Concerns about noise and dust emissions from the premises. Summary of comments received listed in Appendix 1	Refer to Appendix 1
Urban Bushland Council WA – email 19 October 2022	No comments received	N/A
Department of Planning, Lands and Heritage – email 19 October 2022	No comments received	N/A
Department of Biodiversity, Conservation and Attractions – email 19 October 2022	Response received on 25 October 2022 - Department of Biodiversity, Conservation and Attractions has no comments for the proposal	N/A
City of Joondalup – email 19 October 2022	No comments received	N/A

5. Conclusion

Based on the assessment in this decision report, the delegated officer has determined that a works approval will be granted, subject to conditions commensurate with the determined controls and necessary for administration and reporting requirements.

References

1. Burrell Barnett Taylor 2020, *Ocean Reef Marina Improvement Scheme Report*. Accessed online on 15 November 2022:
[Ocean Reef Marina Improvement Scheme Report \(www.wa.gov.au\)](http://www.wa.gov.au)
2. Department of Environment Regulation (DER) 2015, *Guidance Statement: Setting Conditions*, Perth, Western Australia.
3. Department of Climate Change, Energy, the Environment and Water 2022, *Referral guideline for 3 WA threatened black cockatoo species*
4. Department of Water and Environmental Regulation (DWER) 2020, *Guideline: Environmental Siting*, Perth, Western Australia.
5. DWER 2020, *Guideline: Risk Assessments*, Perth, Western Australia.
6. Department of Biodiversity, Conservation and Attractions (2022) Threatened and Priority Fauna List 7. Accessed online on 21 December 2022:
<https://www.dpaw.wa.gov.au/>
7. Environmental Protection Authority (2020) *Ocean Reef Improvement Scheme (Ref:*

CMS17771).

8. Environmental Protection Authority 2019, Statement No. 1107. Accessed online on 12 September 2022: <https://www.epa.wa.gov.au/sites/default/files/1MINSTAT/Ministerial%20Statement%201107.pdf>
9. EcoAcustics Pty Ltd 2021, *Ocean Reef Marina, Construction Noise Assessment and Management Plan* (Ref n°: A2141719)
10. Government of Western Australia 2016, *Biodiversity Conservation Act 2016*
11. Government of Western Australia 2022, *Environmental Protection (Noise) Regulations 1997*
12. Government of Western Australia 2020, *Rights in Water and Irrigation Act 1914*
13. Western Australian Planning Commission (WAPC) 2020, *Ocean Reef Marina Improvement Scheme No. 1*. Accessed online on 15 November 2022: [Ocean Reef Marina Improvement Scheme No. 1 \(www.wa.gov.au\)](http://www.wa.gov.au)

Appendix 1: Summary of stakeholder comments

Submitter	Key area of concern	Summary of stakeholder comments	Response
1	Bushforever site and noise	<p>Concern on noise level which already makes difficult to live in their current address.</p> <p>Concern about the clearing of Bushforever area</p>	<p>See Table 4 for a risk assessment of noise emissions associated with operation of the crushing and screening plant.</p> <p>Conditions 1, 6, 9, 10, 11, 12, 13, 14 and 15 have been added to the issued works approval to ensure noise levels during operation do not present an unacceptable risk to nearby receptors. Conditions 10 – 13 require noise monitoring during Time Limited Operations</p> <p>In addition, the applicant must ensure that operating times for crushing and screening plant occur between 7:00am to 6:00pm Monday to Saturday</p> <p>The Department has had for regard for the Bush Forever site as a potential receptor for noise, dust and liquid waste discharges during construction and time limited operation of the crushing and screening plant and determined that the proposal presents a medium risk. In accordance with the Department's <i>Guideline: Risk Assessments</i>, the prescribed activity has been determined to be acceptable subject to regulatory controls.</p> <p>The Delegated Officer undertook consultation with Urban Bushland Council WA and Department of Biodiversity, Conservation and Attractions in relation to this application (refer Table 5).</p> <p>No clearing of native vegetation has been authorised under the works approval.</p>
2	Location of proposed machinery and dust monitoring	<p>Comment on whether the machinery and material extraction could be located off-site and if there will be ongoing dust management plan</p>	<p>The risk assessment conducted in table 4 considered the potential for dust emissions during construction and time limited operation of the crushing and screening plant.</p> <p>Works approval conditions 1, 6, 7 and 8 have been applied to manage dust emissions during construction and Time limited Operations.</p> <p>In accordance with the department's <i>Guideline: Risk Assessments</i>, the prescribed activity has been determined to be acceptable subject to regulatory controls.</p>
4	Dust and noise	<p>Concern on the proposal as already the dust levels increased since works on the marina started years ago, now will be more. The stakeholder opposes to the</p>	<p>See Table 4 for a risk assessment of dust and noise emissions associated with operation of the crushing and screening plant.</p>

		proposal and asserts that water carts and other efforts for dust suppression have a minimal effect.	Works approval conditions 1, 6, 7 and 8 have been applied to manage dust emissions during construction and Time limited Operations.
5	Dust and noise	Concern about the increase of dust and noise that the screening plant will cause. Stakeholder stated they have endured noise and air pollution since the Ocean Reef Marina works started. Since then, health issues and reduced wellbeing has been an issue and stakeholder is considering moving to another house.	<p>Conditions 1 and 6 relate to controls to be implemented to manage noise emissions. Conditions 10 – 13 require noise monitoring to be conducted during crushing and screening activities to ensure compliance with the Noise Regulations.</p> <p>Works approval conditions have been conditioned in accordance with the Department's <i>Guideline: Risk Assessments</i>.</p>
6	Dust and noise	<p>Concern about the increase of dust and noise, as the current works has resulted in increased amount of dust in their residence.</p> <p>Stakeholder believes that more affected residents should be offered compensation to clean up residence.</p>	
7	Dust and noise	Concern about dust and noise, stakeholder claims that the proposed activities are unacceptable.	
8	Length of the works	Concern about how long the crushing/screening plant will be on site	<p>The works approval authorises construction of the crushing and screening plant, which is expected to take around two weeks. A time limited operation phase has also been authorised under the works approval for a maximum of 180 days.</p> <p>Should the applicant require a longer timeframe to operate the crushing and screening plant, a licence will be required under Part V of the EP Act, which will require further risk assessment of emissions associated with ongoing operations, and conditioning of emission controls commensurate to risk.</p>

Appendix 2: Summary of applicant's comments on risk assessment and draft conditions

Condition	Summary of applicant's comment	Department's response
Table 1: Design and construction requirements	Request that the reference to 'croakers/quackers' in the design and installation requirements for the crusher, screen and mobile equipment (rows 1, 2 and 3) is deleted to allow any type of broadband reversing be fitted.	Deleted the reference to 'croakers/quackers' in Table 1
Condition 5(a)	Request that the time limited operations phase is extended to 180 calendar days to allow sufficient time for the licence application to be prepared, submitted and assessed.	The department has extended the time limited operations phase from 90 days to 180 days
Table 2: Infrastructure and equipment requirements during time limited operations	There is a typographical error in the infrastructure location column. It is also noted that the location point in Schedule 1 is not shown in the draft. Request that the description is amended to ' <i>Within premises boundary but not further east than the location point shown on the Premises Map in Schedule 1</i> ' and that the map in Schedule 1 is changed to the one provided in this response.	Table 2 edited accordingly
Condition 10	Request that the time limit for the implementation of the noise monitoring condition is increased from 7 days to 21 days to allow sufficient time for a suitably qualified and experienced consultant to be engaged and mobilised.	The department has extended the time limit for the implementation of the noise monitoring condition from 7 days to 21 days
Condition 13	Request that the condition is deleted as the assigned levels in the Environmental Protection (Noise) Regulations 1997 do not apply to the construction works. The results of the noise monitoring generally will inform if additional controls may be required.	Condition 13 has not been removed. The Delegated Officer has determined that the noise monitoring required under condition 12 and any additional noise controls that may be required by condition 13 are related to operational noise authorised under a separate approval (this works approval) to the reclamation works. The crushing and screening activities are considered separate to the construction activities and therefore, are still required to comply with the Noise Regulations.
Schedule 1: Maps	A higher quality version of the premises map is attached, including the	The figure 1 in Schedule 1 has been updated with the new

Condition	Summary of applicant's comment	Department's response
	location of the crusher and screen referenced in Table 2.	figure provided by the applicant.
Appendix 1: Summary of stakeholder comments	Information requested by the department is as follows: 'The works approval authorises construction of the crushing and screening plant, which is expected to take around two weeks. A time limited operation phase has also been authorised under the works approval for a maximum of 180 days.'	Appendix 1 has been updated accordingly

Appendix 3: Application validation summary

SECTION 1: APPLICATION SUMMARY				
Application type				
Works approval	<input checked="" type="checkbox"/>			
Licence	<input type="checkbox"/>	Relevant works approval number:		None <input type="checkbox"/>
		Has the works approval been complied with?		Yes <input type="checkbox"/> No <input type="checkbox"/>
		Has time limited operations under the works approval demonstrated acceptable operations?		Yes <input type="checkbox"/> No <input type="checkbox"/> N/A <input type="checkbox"/>
		Environmental Compliance Report / Critical Containment Infrastructure Report submitted?		Yes <input type="checkbox"/> No <input type="checkbox"/>
		Date Report received:		
Renewal	<input type="checkbox"/>	Current licence number:		
Amendment to works approval	<input type="checkbox"/>	Current works approval number:		
Amendment to licence	<input type="checkbox"/>	Current licence number:		
		Relevant works approval number:	N/A	<input type="checkbox"/>
Registration	<input type="checkbox"/>	Current works approval number:	None	<input type="checkbox"/>
Date application received	11/Aug/2022			
Applicant and Premises details				
Applicant name/s (full legal name/s)	The Western Australian Land Authority			
Premises name	Ocean Reef Marina Reclamation Earthworks			
Premises location	Hodges Drive, Ocean Reef, Part of: 362L Boat Harbour Qys, Ocean Reef (Lot 15446 on P040340); 626 Burns Beach Rd, Iluka (Lot 555 on P402198); and 362 Ocean Reef Rd, Ocean Reef (Lot 1029 on D057604).			
Local Government Authority	City of Joondalup			
Application documents				
HPCM file reference number:	DER2022/000401			

Key application documents (additional to application form):	<p>In document “62390 ORM Cat 12 works approval application Rev 0” are the following attachments:</p> <ul style="list-style-type: none"> (a) Attachment 1A: Proof of occupier status: <ul style="list-style-type: none"> -Record of Certificate of Title (Lot 1029 on Diagram 57604) -Crown Land Titles (Lot 15446 on Deposited Plan 40340, Lot 555 on Deposited Plan 402198) (b) Attachment 2: Premises map/s (c) Attachment 3B: Proposed activities (d) Attachment 6A: Emissions and discharges (e) Attachment 7: Siting and location (f) Attachment 8: Construction Environment Plan (g) Attachment 10: Proposed fee (h) Letter of Delegated Authority
-------------------------------------------------------------	------------------------------------------------------------------------------------------------------------------------------------------------------------------------------------------------------------------------------------------------------------------------------------------------------------------------------------------------------------------------------------------------------------------------------------------------------------------------------------------------------------------------------------------------------------------------------------------------------------------------------------------------------------------------------------------------------------------------------------------------------------------

Scope of application/assessment

Summary of proposed activities or changes to existing operations.	<p>Works approval, part of Ocean Reef Marina development</p> <ul style="list-style-type: none"> (a) Excavation and crushing of rocks, then screened to a 100 mm to be use in reclamation; (b) Extracted and crushed material will be stockpiled; and (c) Loading material onto dump trucks. <p>Time limited operations of the crusher and screen is requested</p>
-------------------------------------------------------------------	-----------------------------------------------------------------------------------------------------------------------------------------------------------------------------------------------------------------------------------------------------------------------------------------------------------------------------------------------------------------------------------------------------------

Category number/s (activities that cause the premises to become prescribed premises)

Table 1: Prescribed premises categories

Prescribed premises category and description	Proposed production or design capacity	
Category 12: Screening etc. of material: premises (other than premises within category 5 or 8) on which material extracted from the ground is screened, washed, crushed, ground, milled, sized or separated.	Proposed – 200,000 tonnes per year.	

Legislative context and other approvals

Has the applicant referred, or do they intend to refer, their proposal to the EPA under Part IV of the EP Act as a significant proposal?	Yes <input checked="" type="checkbox"/> No <input type="checkbox"/>	Referral decision No: 1629 Managed under Part V <input type="checkbox"/> Assessed under Part IV <input checked="" type="checkbox"/>
Does the applicant hold any existing Part IV Ministerial Statements relevant to the application?	Yes <input checked="" type="checkbox"/> No <input type="checkbox"/>	Ministerial statement No: 1107 (MS 1107) issued on 7 August 2019. EPA Report No: 1629
Has the proposal been referred and/or assessed under the EPBC Act?	Yes <input checked="" type="checkbox"/> No <input type="checkbox"/>	Reference No: 2014/7237 The proposed action is not a controlled action
Has the applicant demonstrated occupancy (proof of occupier status)?	Yes <input checked="" type="checkbox"/> No <input type="checkbox"/>	Certificate of title <input checked="" type="checkbox"/> Lot 1029 on Diagram 57604 General lease <input type="checkbox"/> Expiry: Mining lease / tenement <input type="checkbox"/> Expiry: Other evidence <input checked="" type="checkbox"/> Expiry: Two Crown Land Titles: a) Lot 15446 on Deposited Plan 40340 b) Lot 555 on Deposited Plan 402198
Has the applicant obtained all relevant planning approvals?	Yes <input checked="" type="checkbox"/> No <input type="checkbox"/> N/A <input type="checkbox"/>	Approval: -MRS Amendment 1270/41 -Improvement Plan No. 51: Ocean Reef Marina and the Ocean Reef Marina Improvement Scheme (Improvement Scheme) -The City's Local Planning Scheme No. 3 (identify the Ocean Reef Marina as reserved [partly for Public Purposes (Special uses) and remainder for Parks and Recreation. Expiry date: If N/A explain why?
Has the applicant applied for, or have an existing EP Act clearing permit in relation to this proposal?	Yes <input checked="" type="checkbox"/> No <input type="checkbox"/>	CPS No: Clearing Permit NVCP 8947/2 2.89 ha approved to clean (valid between 03/11/20 – 3/11/30)

<p>Has the applicant applied for, or have an existing CAWS Act clearing licence in relation to this proposal?</p>	<p>Yes <input type="checkbox"/> No <input checked="" type="checkbox"/></p>	<p>Application reference No: Licence/permit No: N/A</p>
<p>Has the applicant applied for, or have an existing RIWI Act licence or permit in relation to this proposal?</p>	<p>Yes <input checked="" type="checkbox"/> No <input type="checkbox"/></p>	<p>Application reference No: N/A Licence/permit No: Applicant mentioned that DevelopmentWA holds groundwater abstraction licence GWL206718 with an allocation of 374,000 kL per year. That bore will supply water for proposed activity (e.g. dust suppression)</p>
<p>Does the proposal involve a discharge of waste into a designated area (as defined in section 57 of the EP Act)?</p>	<p>Yes <input type="checkbox"/> No <input checked="" type="checkbox"/></p>	<p>Name: N/A Type: Proclaimed Groundwater Area/Surface Water Area Has Regulatory Services (Water) been consulted? Yes <input type="checkbox"/> No <input type="checkbox"/> N/A <input checked="" type="checkbox"/> Regional office: Swan Avon / Mid-West Gascoyne / Kwinana Peel / North West / South West / Goldfields / South Coast</p>
<p>Is the Premises situated in a Public Drinking Water Source Area (PDWSA)?</p>	<p>Yes <input type="checkbox"/> No <input checked="" type="checkbox"/></p>	<p>Name: N/A Priority: P1 / P2 / P3 / N/A Are the proposed activities/landuse compatible with the PDWSA (refer to WQPN 25)? Yes <input type="checkbox"/> No <input type="checkbox"/> N/A <input checked="" type="checkbox"/></p>
<p>Is the Premises subject to any other Acts or subsidiary regulations (e.g. <i>Dangerous Goods Safety Act 2004</i>, <i>Environmental Protection (Controlled Waste) Regulations 2004</i>, <i>State Agreement Act xxxx</i>)</p>	<p>Yes <input checked="" type="checkbox"/> No <input type="checkbox"/></p>	<ul style="list-style-type: none"> - WA Environmental Offsets Policy (Government of Western Australia 2011) -Ecological Linkages, Perth Regional Ecological Linkages - Environment and Biodiversity Conservation Act 1999 - Environmental Protection (Noise) Regulations 1997 - Natural Heritage Trust of Australia Act 1997

		- Aboriginal Heritage Act 1972 - Dangerous Goods Safety Act 2004
Is the Premises within an Environmental Protection Policy (EPP) Area?	Yes <input type="checkbox"/> No <input checked="" type="checkbox"/>	
Is the Premises subject to any EPP requirements?	Yes <input type="checkbox"/> No <input checked="" type="checkbox"/>	
Is the Premises a known or suspected contaminated site under the <i>Contaminated Sites Act 2003</i> ?	Yes <input type="checkbox"/> No <input checked="" type="checkbox"/>	Classification: N/A Date of classification: N/A