



Application for Works Approval Amendment

Part V Division 3 of the *Environmental Protection Act 1986*

Works Approval Number	W6780/2023/1
Works Approval Holder	Atlas Iron Pty Ltd
ACN	110 396 168
File Number	APP-0026610
Premises	McPhee Creek Project Mining tenements M45/1243-1, L46/158, L45/598 NULLAGINE WA 6758
Date of Report	22 September 2025
Decision	Revised works approval granted

Table of Contents

1. Decision summary	1
2. Scope of assessment	1
2.1 Regulatory framework	1
2.2 Amendment summary	1
2.3 Part IV of the EP Act.....	2
3. Risk assessment.....	2
3.1 Source-pathways and receptors	2
3.1.1 Emissions and controls	2
3.1.2 Receptors.....	5
3.2 Risk ratings.....	2
4. Consultation	8
5. Conclusion	8
5.1 Summary of amendments.....	8
References	8

Table 1: Works Approval Holder controls	3
---	---

Table 2: Works Approval Holder Proposed Controls relating to request for flexibility in Category 6 Turkeys Nest and auxiliary infrastructure	4
---	---

Table 3: Sensitive human and environmental receptors and distance from prescribed activity.	5
---	---

Table 4. Risk assessment of potential emissions and discharges from the Premises during construction, commissioning and operation.....	3
---	---

Table 5: Consultation	8
-----------------------------	---

Table 6: Summary of works approval amendments.....	8
--	---

Figure 1: Distance to sensitive receptors – Refer to Figures 13 and 14 of the works approval for possible locations of Turkeys nest and Additional Infrastructure	1
--	---

1. Decision summary

Works Approval W6780/2023/1 is held by Atlas Iron Pty Ltd (Works Approval Holder) for the McPhee Creek Project (the Premises), located at Mining tenements M45/1243-1, L46/158, L45/598 in Nullagine WA.

This Amendment Report documents the assessment of potential risks to the environment and public health from proposed changes to the emissions and discharges during the construction and operation of the Premises. As a result of this assessment, Revised Works Approval W6780/2023/1 has been granted.

The Revised Works Approval issued as a result of this amendment consolidates and supersedes the existing Works Approval previously granted in relation to the Premises.

2. Scope of assessment

2.1 Regulatory framework

In completing the assessment documented in this Amendment Report, the department has considered and given due regard to its Regulatory Framework and relevant policy documents which are available at <https://dwer.wa.gov.au/regulatory-documents>.

2.2 Amendment summary

On 22 May 2025, the applicant submitted an application for a works approval to the department under section 54 of the *Environmental Protection Act 1986* (EP Act).

The McPhee Creek Project is a greenfield iron ore mine site located approximately 30 km north of Nullagine. An initial works approval was approved on 17 September 2024, providing part V approval for the development of category 5, 6, 12, 54, 57 and 73 prescribed activities.

Due to changes in project design, however, Atlas is now proposing to consolidate the two previously approved Mine Storage Areas (MSA) into a single MSA. This change requires relocating certain activities nominated in the Works Approval to the new MSA location. This application captures the requirement to undertake construction works relating to the consolidation of the two Mine Service Areas (MSAs) and the relocation of associated prescribed activities at the premises.

There are no changes proposed to the currently approved design capacity as outlined in W6780/2023/1. The following updates relate only to the relocation and extension of existing infrastructure:

The proposed changes are summarised as relocation of the following:

- MSA Wastewater Treatment Plant (WWTP)
- Used Tyre Storage:
 - Relocation of the existing temporary storage facility.
 - Addition of a second temporary storage facility.
 - Total tyre capacity remains unchanged at 1,000 tyres.
- Fuel Storage Facilities: Relocation of Fuel Storage 3 and 4 only.
- the Category 6 turkey's nests
- Other Infrastructure:
 - the bioremediation land farm and other associated activities.

Refer to Figure 1 in Section 3.1.2 for a comparison of the previously approved infrastructure locations and the revised layout.

The works approval holder has requested additional flexibility in the location of the bioremediation land farm, turkey's nest and infrastructure that the works approval holder considers to be auxiliary to the regulated categories, and to present low risk to environmental receptors. In support of this, the applicant has proposed generic controls as presented in Table 2.

The premises relates to the categories and assessed design capacity under Schedule 1 of the Environmental Protection Regulations 1987 (EP Regulations) which are defined in works approval W6780/2023/1. The infrastructure and equipment relating to the premises category and any associated activities which the department has considered in line with Guideline: Risk Assessments (DWER 2020) are outlined in works approval W6780/2023/1.

2.3 Part IV of the EP Act

The McPhee Creek Iron Ore Project has been assessed under Part IV of the *Environmental Protection Act 1986* and is subject to Ministerial Statement MS 1224, which grants approval for its implementation. The assessment under Part IV was required due to the project's potential to significantly impact the environment, particularly in relation to:

- Listed threatened species and communities, as defined under the Environment Protection and Biodiversity Conservation Act 1999 (EPBC Act), with reference EPBC 2021/8897.

The Part IV approval has been considered in this Part V assessment to ensure alignment with the conditions and commitments outlined in MS 1224. No inconsistencies have been identified between the Part IV approval and the proposed amendments under this works approval application.

3. Risk assessment

The department assesses the risks of emissions from prescribed premises and identifies the potential source, pathway and impact to receptors in accordance with the *Guideline: Risk assessments* (DWER 2020).

To establish a Risk Event there must be an emission, a receptor which may be exposed to that emission through an identified actual or likely pathway, and a potential adverse effect to the receptor from exposure to that emission.

3.1 Source-pathways and receptors

3.1.1 Emissions and controls

The key emissions and associated actual or likely pathway during premises construction and operation which have been considered in this Amendment Report are detailed below. Table 1 details the control measures the Works Approval Holder has proposed to assist in controlling these emissions, where necessary.

Table 1: Works Approval Holder controls

Emission	Sources	Potential pathways	Proposed controls
Construction			
Dust	Earthworks, vehicle movements, lift-off from stockpiles	Airborne via wind	Existing controls apply: <ul style="list-style-type: none"> Water carts will be used for the suppression of dust during construction activities
Noise	Construction machinery, vehicle movements	Airborne via wind	This has been assessed under Part IV of the EP Act and included in MS 1224.
Sediment-laden stormwater	Earthworks and temporary drainage works	Overland runoff to nearby watercourses	<ul style="list-style-type: none"> Temporary drains, bunds and sediment traps to be used during construction to capture sediment laden run-off. Potentially contaminated water will not be discharged into the environment Sediment laden water storage infrastructure to be regularly cleaned when the basin capacity is less than 50% full. Sediment control infrastructure to be inspected after storm events and any built up material removed.
Commissioning			
Treated wastewater	Discharge of treated wastewater from Main Camp, Exploration Camp and MSA WWTP's to irrigation spray fields	Direct discharge to land causing potential impacts to sensitive surface water receptors	<ul style="list-style-type: none"> Existing controls conditioned in works approval
Sewage, partially treated sewage, treated wastewater	Containment loss from WWTP and associated pipelines	Overland flow causing potential impacts to sensitive surface water receptors. Infiltration through soil to	<ul style="list-style-type: none"> Existing controls conditioned in works approval

Emission	Sources	Potential pathways	Proposed controls
		groundwater causing contamination of groundwater	
Operation			
Dust	Screening, crushing, loading/unloading, vehicle movements	Airborne via wind	Existing controls from works approval apply including: Dust suppression systems, water carts, speed limits
Noise	Operation of screening and crushing equipment	Airborne via wind	This has been assessed under Part IV of the EP Act and included in MS 1224.
Sediment-laden stormwater	Operational runoff from disturbed areas	Overland runoff to surface water features	Existing controls from works approval apply- including Stormwater management systems, sediment basins, diversion drains

In addition to the controls proposed in Table 1, in the request for additional flexibility in placement location, the applicant has proposed generic controls that relate to the auxiliary activities outlined in Table 2 below.

Table 2: Works Approval Holder Proposed Controls relating to request for flexibility in Category 6 Turkey's Nest and auxiliary infrastructure

Infrastructure	Design and construction / installation requirements	Infrastructure location
Bulk Chemical Storage Areas	Must provide minimum 110% containment capacity for the volume of chemicals stored.	<ul style="list-style-type: none"> Must not be located within 50 metres of a watercourse or wetland; Must not be located within Significant Fauna Exclusion Zone, bat cave buffer zones, Aboriginal Heritage areas (unless prior consent is obtained), or any pool area.
Bioremediation landfarms	<ul style="list-style-type: none"> Synthetic lined to achieve a permeability of 1×10^{-9} m/s, including an overlying layer of clean material to prevent damage; Stormwater / surface water diverted so as not to flow onto the treatment facility; Designed so that any potentially contaminated runoff from the treatment cells is contained; Not to be constructed within 50 m of surface water courses; 	

	<ul style="list-style-type: none"> • Appropriate signage warning of contamination placed 	
Turkey's nests (Category 6)	<ul style="list-style-type: none"> • Design specifications as per Figure 13. • Capacities ranging between 2ML and 6ML; • For storage of uncontaminated water only; HDPE lined; • Constructed to allow minimum 300 mm freeboard; Fenced around the perimeter 	

3.1.2 Receptors

In accordance with the *Guideline: Risk assessments* (DWER 2020), the Delegated Officer has excluded employees, visitors and contractors of the Works Approval Holder's from its assessment. Protection of these parties often involves different exposure risks and prevention strategies, and is provided for under other state legislation.

Table 3 below provides a summary of potential human and environmental receptors that may be impacted as a result of activities upon or emission and discharges from the prescribed premises (*Guideline: Environmental siting* (DWER 2020)).

Table 3: Sensitive human and environmental receptors and distance from prescribed activity

Human receptors	Distance from prescribed activity
Nullagine Township	Approximately 26km south of the premises (screened out as no pathway identified).
Aboriginal heritage sites	Six registered sites and 83 potential sites within the prescribed premises boundary
Environmental receptors	Distance from prescribed activity
Surface water (McPhee Creek, Lionel Creek, Spinaway Creek, Sandy Creek, etc.)	<p>Watercourses that intersect the Prescribed Premises are ephemeral and tend to flow sporadically during and immediately after summer storm events (SKM 2013). Tributaries of the Nullagine River flow southeast from the Prescribed Premises.</p> <ul style="list-style-type: none"> • MCPhee Creek, • Branch of MCPhee Creek; • Lionel Creek; • Spinaway Creek; and • Sandy Creek <p>Permanent pools and creek lines for MCPhee Creek and Branch of MCPhee were reported to support a diverse range of aquatic flora, habitats and aquatic</p>

	<p>fauna values, including conservation significant and range restricted species (Biologic, 2020).</p> <p>Fifteen surface water pools have been recorded within the Prescribed Premises including:</p> <ul style="list-style-type: none"> • five permanent; • two semi-permanent; and • eight temporary/seasonal pools. <p>An additional 28 surface water pools outside the Prescribe Premises have been identified including:</p> <ul style="list-style-type: none"> • six permanent; • five semi-permanent; and • seventeen temporary/seasonal. Impacts to surface water pools has been assessed under Part IV of the EPA and sufficiently regulated in MS 1224.
<p>Threatened and/or priority fauna:</p> <ul style="list-style-type: none"> • Northern Quoll (Endangered); • Ghost Bat (Vulnerable); • Grey Falcon (Vulnerable); • Greater Bilby (Vulnerable); • Pilbara Leaf-nosed Bat (Vulnerable); • Pilbara Olive Python (Vulnerable); • Fork Tailed Swift (Migratory); • Gane's Blind Snake (P1); • Long-tailed Dunnart (P4); and • Western Pebblemound Mouse (P4). 	<p>All species have either been recorded within the Prescribed Premises or are likely to occur within the Prescribed Premises due to the presence of suitable habitat and/or proximal recordings (recent or historical).</p>
<p>Threatened flora and/or priority flora:</p> <ul style="list-style-type: none"> • Acacia aphanoclada (Priority 1); • Rostellularia adscendens var. latifolia (Priority 3); • Ptilotus mollis (Priority 4); and • Eragrostis crateriformis (Priority 3). 	<p>Recorded within the prescribed premises</p>
Native vegetation	Present throughout the prescribed premises
Cultural Receptors	Distance from activity / prescribed premises
<p><u>Aboriginal Heritage</u></p> <p>Six 'Other Heritage Sites' which have been lodged with the DPLH occur within the Prescribed Premises. An additional 83 areas are considered to be 'Potential Sites'. These include natural features, artefacts, engravings, quarrying and ceremonial sites.</p>	<p>Within prescribed premises boundary.</p>

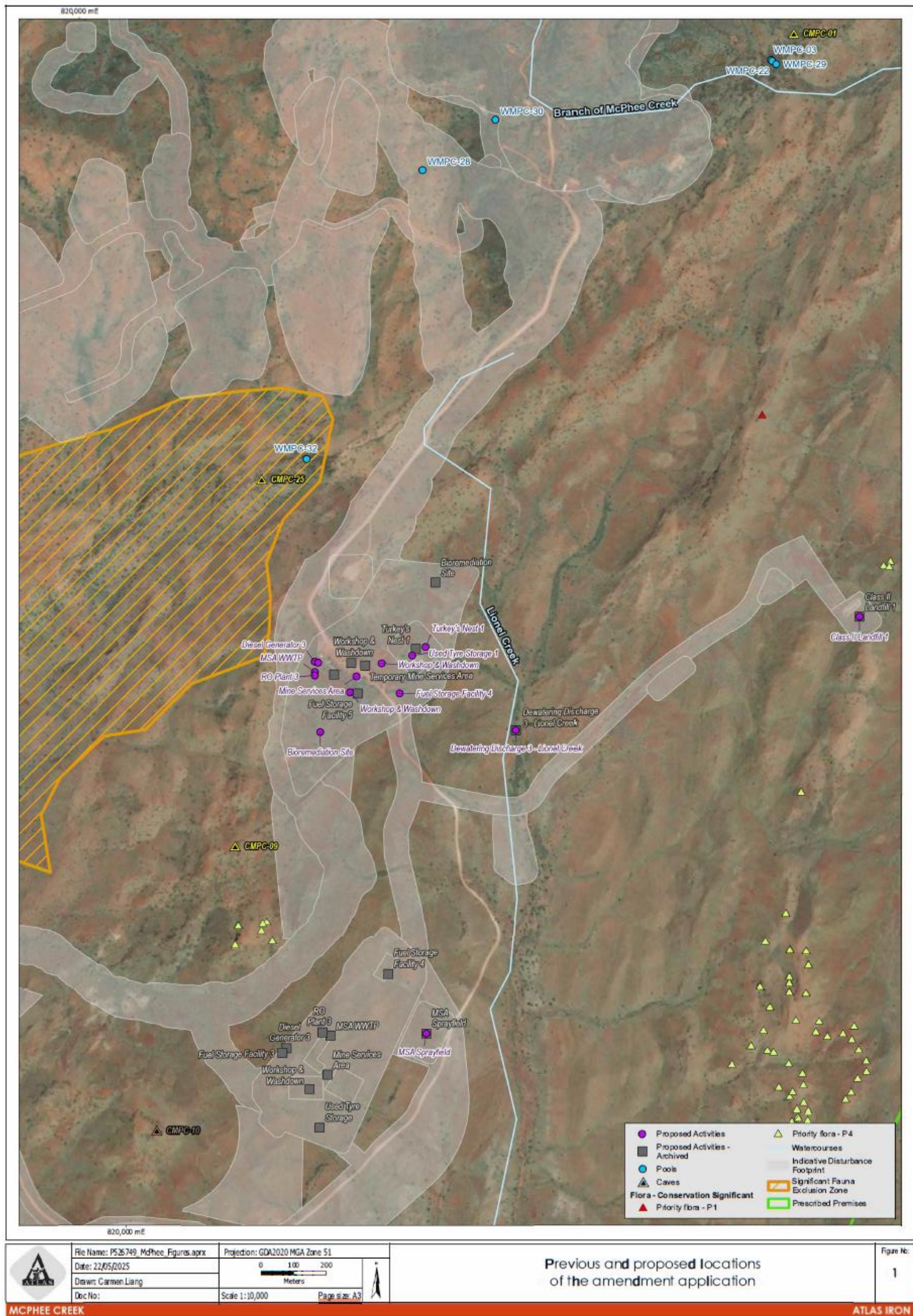


Figure 1: Distance to sensitive receptors – Refer to Figures 13 and 14 of the works approval for possible locations of Turkey's nest and Additional Infrastructure

3.2 Risk ratings

Risk ratings have been assessed in accordance with the *Guideline: Risk Assessments* (DWER 2020) for those emission sources which are proposed to change and takes into account potential source-pathway and receptor linkages as identified in Section 3.1. Where linkages are incomplete they have not been considered further in the risk assessment.

Where the Works Approval Holder has proposed mitigation measures/controls (as detailed in Section 3.1), these have been considered when determining the final risk rating. Where the Delegated Officer considers the Works Approval Holder's proposed controls to be critical to maintaining an acceptable level of risk, these will be incorporated into the works approval as regulatory controls.

Additional regulatory controls may be imposed where the Works Approval Holder's controls are not deemed sufficient. Where this is the case the need for additional controls will be documented and justified in Table 4.

The Revised Works Approval W6780/2023/1 that accompanies this Amendment Report authorises construction, commissioning and time-limited operations. The conditions in the Revised Works Approval have been determined in accordance with *Guidance Statement: Setting Conditions* (DER 2015).

A licence is required following the time-limited operational phase authorised under the works approval to authorise emissions associated with the ongoing operation of the Premises. A risk assessment for the operational phase has been included in this Amendment Report, however licence conditions will not be finalised until the department assesses the licence application.

Table 4. Risk assessment of potential emissions and discharges from the Premises during construction, commissioning and operation

Risk Event					Risk rating C = consequence L = likelihood	Applicant controls sufficient?	Conditions of works approval	Justification for additional regulatory controls
Source/Activities	Potential emissions	Potential pathways and impact	Receptors	Applicant controls				
Construction works of relocated activities								
Construction of: <ul style="list-style-type: none">• WWTP• Tyre Storage Facilities (primary and secondary)• Fuel storage facility	Dust	Air/windborne pathway causing poor vegetation health/death for adjacent priority flora, native vegetation	Threatened and priority flora Native vegetation	Refer to Section 3.1	C=Minor L=Unlikely Medium Risk	Y	Existing condition 1 – dust management	Existing applicant proposed control remain on works approval for dust suppression for all construction activities to protect adjacent priority flora and native vegetation
	Relocation of bioremediation land farm, turkeys nest and Mobilisation of crusher/screener Vehicle movements and earthworks	Sediment laden/hydrocarbon contaminated storm water	Overland run-off causing impacts to sensitive surface water receptors)	Sensitive surface water receptors (permanent pools and creeklines)	Refer to Section 3.1	C=Minor L=Unlikely Medium Risk	Y	Condition 2 – temporary stormwater infrastructure
Commissioning (one week commissioning reassessed due to new location)								
Containment loss during commissioning from WWTP and associated pipelines	Sewage, partially treated sewage, wastewater	Direct discharge to land causing contamination of nearby creeklines Infiltration	Shallow groundwater Surface water (creek lines)	Refer to Section 3.1	C=Minor L=Unlikely Medium Risk	Y	Existing condition 10 – commissioning requirements	Commissioning is of short duration and unlikely to pose significant risk. The existing applicant proposed controls remain relevant and are considered sufficient and remain in works approval.

Risk Event					Risk rating C = consequence L = likelihood	Applicant controls sufficient?	Conditions of works approval	Justification for additional regulatory controls
Source/Activities	Potential emissions	Potential pathways and impact	Receptors	Applicant controls				
		through soil to groundwater causing contamination of groundwater						
Containment loss during commissioning for bulk storage of chemicals (i.e. fuel)	Hydrocarbon and chemical spills	Direct discharge to land causing contamination of nearby creeklines Infiltration through soil to groundwater causing contamination of groundwater	Shallow groundwater Surface water (creek lines) Threatened and priority fauna Threatened and priority flora	Refer to Section 3.1	C=Minor L=Unlikely Medium Risk	Y	Condition 10 – clean up requirements	N/A
Time Limited Operations – (Reassessed only for new locations)								
Sewage facility								
Containment loss from MSA WWTP and associated pipelines	Sewage, partially treated sewage, wastewater	Direct discharge to land causing contamination of nearby creeklines	Shallow groundwater Surface water (creek lines)	Refer to Section 3.1	C=Minor L=Unlikely Medium Risk	Y	Condition 3 – construction requirements Condition 10 – Environmental commissioning	

Risk Event					Risk rating C = consequence L = likelihood	Applicant controls sufficient?	Conditions of works approval	Justification for additional regulatory controls
Source/Activities	Potential emissions	Potential pathways and impact	Receptors	Applicant controls				
		Infiltration through soil to groundwater causing contamination of groundwater					requirements Condition 18 -	
Relocation of Category 67 Activities (Tyre storage)								
Storage of up to 1000 used tyres	Smoke, including particulates and air emissions containing hydrocarbons and other toxic elements released in the event of a fire.	Air/windborne pathway causing impacts to health/amenity and Destruction of veg / fauna etc	Conservation significant fauna Priority flora and native vegetation	Refer to section 3.1	C=Major L=Unlikely Medium Risk	Y	Condition 15 – time limited operations, specifications for used tyre storage Condition 16 – no waste burnt on premises	Additional controls applied by DWER during initial assessment of works approval remain applicable to new tyre storage locations.
	Chemical laden surface water runoff in the event of an accidental tyre fire	Surface water run off causing contamination of nearby ephemeral creek lines	Surface water (creek lines), native vegetation and fauna	Refer to section 3.1	C=Moderate L=Unlikely Medium Risk	Y	Condition 3 – construction requirements Condition 15 – time limited operations, spill cleanup and recording	Additional controls applied by DWER during initial assessment of works approval remain applicable to new tyre storage locations.
Ancillary to prescribed activities (Fuel storage facilities, bioremediation sites, turkey nest)								

Risk Event					Risk rating C = consequence L = likelihood	Applicant controls sufficient?	Conditions of works approval	Justification for additional regulatory controls
Source/Activities	Potential emissions	Potential pathways and impact	Receptors	Applicant controls				
Operation of bioremediation land farms	Hydrocarbon contaminate water (from stormwater etc)	Seepage through base and embankments to soil and groundwater causing vegetation poor health/ and groundwater/surface water contamination	Sensitive surface water receptors (permanent pools and creeklines) Shallow groundwater – 5m bgl	Refer to section 3.1	C = Moderate L = Unlikely Medium Risk	N	Condition 3 – construction requirements (in reference to location) Condition 15 – time limited operations	The works approval holder requested flexibility to locate category 6 Turkey's Nest auxiliary infrastructure anywhere within the prescribed premise boundary, subject to condition, including the bioremediation farm, turkey's nest and other infrastructure that is auxiliary to the prescribed premises category. To manage environmental risks, the works approval holder has proposed controls in section 3.1 which have been conditioned in the works approval. The department has deemed that the extent of this requested flexibility presents an unacceptable environmental risk due to difficulty in providing accurate assessment of all receptors across the proposed area. The department has included additional Figures 12, 13 and 14, to specify area in which the fuel storage, turkey's nest and mine dewater can be
		Surface water run off - overtopping land farm embankments	Sensitive surface water receptors (permanent pools and creeklines)	Refer to section 3.1	C = Minor L = Unlikely Medium Risk	N	Condition 3 – construction requirements (in reference to location) Condition 15 – time limited operations	
Operation of Turkey nest containing mine dewater (used for dust suppression)	Mine dewater (fresh TDS – 290 mg/L)	Seepage through base and embankments to soil and groundwater causing vegetation poor health/and groundwater/surface water contamination.	Sensitive surface water receptors (permanent pools and creeklines) Shallow groundwater – 5m bg	Refer section 3.1	C = Moderate L = Unlikely Medium Risk	N	Condition 3 – construction requirements (in reference to location)	

Risk Event					Risk rating C = consequence L = likelihood	Applicant controls sufficient?	Conditions of works approval	Justification for additional regulatory controls
Source/Activities	Potential emissions	Potential pathways and impact	Receptors	Applicant controls				
		Surface water run off- overtopping land farm embankments	Sensitive surface water receptors (permanent pools and creeklines)	Refer section 3.1	C =Moderate L = Unlikely Medium Risk	N	Condition 3 – construction requirements (in reference to location)	<p>located</p> <p>Additionally, the department has conditioned the applicant proposed controls of:</p> <ul style="list-style-type: none"> - Specify a minimum distance from aboriginal cultural receptors - Specify minimum distance from native vegetation <p>These are provided in the construction requirements detailed in condition 3.</p>
Bulk storage of fuel	Hydrocarbons	Overland flow / surface water run off causing potential impacts to sensitive surface water receptors.	Sensitive surface water receptors (permanent pools and creeklines)	Refer section 3.1	C =Moderate L = Unlikely Medium Risk	N	Condition 3 – construction requirements (in reference to location)	

4. Consultation

Table 5 provides a summary of the consultation undertaken by the department.

Table 5: Consultation

Consultation method	Comments received	Department response
Works Approval Holder was provided with draft amendment on 17/09/2025.	<p>The applicant provided an additional figure on 19 September 2025 to demonstrate the required location of bulk fuel storage.</p> <p>The applicant waived the remaining comment period and requested that the amendment was granted as soon as possible.</p>	Updated figure 12 included in works approval to demonstrate location of existing fuel infrastructure, and buffer zone approval for installation of new infrastructure.

5. Conclusion

Based on the assessment in this Amendment Report, the Delegated Officer has determined that a Revised Works Approval will be granted, subject to conditions commensurate with the determined controls and necessary for administration and reporting requirements.

5.1 Summary of amendments

Table 6 provides a summary of the proposed amendments and will act as record of implemented changes. All proposed changes have been incorporated into the Revised Works Approval as part of the amendment process.

Table 6: Summary of works approval amendments

Condition no.	Proposed amendments
Condition 3	Relocation of MSA Wastewater Treatment Plant (refer figure 7).
Condition 3	Relocation of the temporary used tyre storage facility (location 1) and inclusion of a second temporary used tyre storage facility. (refer figure 9).
Condition 3	Relocation of the fuel storage facilities (refer figure 10).
Condition 3	Relocations of bioremediation land farm, turkey's nest and other activities (refer figure 12).
14a	Time limited operations extended from 180 days to 360 days
Schedule 1 Maps	Update of figures 7, 9, 10,12 and addition of figure 13 and 14 in consideration of above changes. Former figure 13 updated to Figure 15.

References

1. Department of Environment Regulation (DER) 2015, *Guidance Statement: Setting Conditions*, Perth, Western Australia.
2. Department of Water and Environmental Regulation (DWER) 2020, *Guideline: Environmental Siting*, Perth, Western Australia.
3. DWER 2020, *Guideline: Risk Assessments*, Perth, Western Australia.
4. Hanroy Hancock Prospecting, 2025, Works Approval Amendment Application No.2, Perth, Western Australia.