



Application for Works Approval

Part V Division 3 of the *Environmental Protection Act 1986*

Works Approval Number W6806/2023/1

Applicant Kimberley Granite Quarries Pty Ltd

ACN 153 969 610

File number DER2023/000263

Premises Fitzroy South Quarry
Mining tenement M04/450
Great Northern Highway
DERBY WA 6728

Date of report 17/11/2023

Decision Works approval granted

SUZY ROWORTH

SENIOR ENVIRONMENTAL OFFICER, INDUSTRY REGULATION

an officer delegated under section 20 of the *Environmental Protection Act 1986* (WA)

Table of Contents

1. Decision summary	1
2. Scope of assessment	1
2.1 Regulatory framework	1
2.2 Application summary and overview of premises	1
2.3 <i>Environmental Protection and Biodiversity Conservation Act 1999</i>	3
2.4 <i>Rights in Water and Irrigation Act 1914</i>	3
2.5 Groundwater Licence	3
3. Risk assessment	3
3.1 Source-pathways and receptors	4
Emissions and controls	4
Receptors	6
3.2 Risk ratings	13
4. Consultation	16
5. Conclusion	17
References	18
Appendix 2: Application validation summary	19

Table 1: Proposed applicant controls	4
Table 2: Sensitive human and environmental receptors and distance from prescribed activity	7
Table 3: Risk assessment of potential emissions and discharges from the premises during construction and operation	14
Table 4: Consultation	16
Figure 1: Crushing and Screening Infrastructure	2
Figure 2: Showing Crushing and Screening Plant in Situ	2
Figure 3: Dust Suppression system in Screening Operations	3
Figure 4: Premises sitting (RPM Global, 2023)	9
Figure 5: Aboriginal and cultural Heritage places (RPM Global, 2023)	10
Figure 6: Vegetation Mapping (RPM Global, 2023)	11
Figure 7: Hydrology (RPM Global, 2023)	12

1. Decision summary

This decision report documents the assessment of potential risks to the environment and public health from emissions and discharges during the construction and operation of the premises. As a result of this assessment, works approval W6806/2023/1 has been granted.

2. Scope of assessment

2.1 Regulatory framework

In completing the assessment documented in this decision report, the Department of Water and Environmental Regulation (the department; DWER) has considered and given due regard to its regulatory framework and relevant policy documents which are available at <https://dwer.wa.gov.au/regulatory-documents>.

2.2 Application summary and overview of premises

On 04 April 2023, the applicant submitted an application for a works approval to the department under section 54 of the *Environmental Protection Act 1986* (EP Act).

The application is to undertake construction and operation of a mobile crushing and screening plant at Fitzroy South Quarry (the premises), located on mining lease M04/450 along the Great Northern Highway, West Kimberley. The plant will process 200,000 tonnes of granite per annum, over a five-year period. The premises is approximately 35 km South-East of Fitzroy Crossing. The area is characterised by a large shallow outcropping granitoid formation, extending across the whole of the premises.

The crushing and screening plant will operate primarily between April and November, during the dry season in the Kimberley area. The initial production rate will be 1,000 tonnes per day over a 12-hour shift, with an estimated throughput capacity of 200,000 tonnes per annum.

The premises relates to Category 12: Screening etc. of material and assessed design capacity under Schedule 1 of the *Environmental Protection Regulations 1987* (EP Regulations) which are defined in works approval W6806/2023/1. The infrastructure and equipment relating to the premises category and any associated activities which the department has considered in line with *Guideline: Risk Assessments* (DWER 2020) are outlined in works approval W6806/2023/1.

The crushing and screening plant may be composed of Primary Crusher, Secondary Crusher, Tertiary Crusher, Scalping Screen, Conveyor (Return), Aggregate Screen, Conveyor (Final Stockpiler) (KGQ, 2023b). The crusher is a mobile three stages crusher. The function of each part of the circuit is as follows (Figure 1):

- Primary crusher: This section takes the largest material that has been excavated and processes it to generate a range of product sizes;
- Secondary Crusher: the second stage of material processing, following initial reduction if required;
- Tertiary Crusher: finer level of material reduction if required;
- Scalping Screen: sorting materials into grades, top scalping for removal of coarse oversize and foreign material, bottom scalping for elimination of fine material and dirt. The scalping screen sits between the primary and secondary crusher to remove material which does not require secondary crushing;
- Conveyor (Return): takes material back to initial crusher for additional sizing;
- Aggregate Screen: removal of small particles; and
- Conveyor (Final Stockpiler): Materials of appropriate size are sent via conveyor for stockpiling.

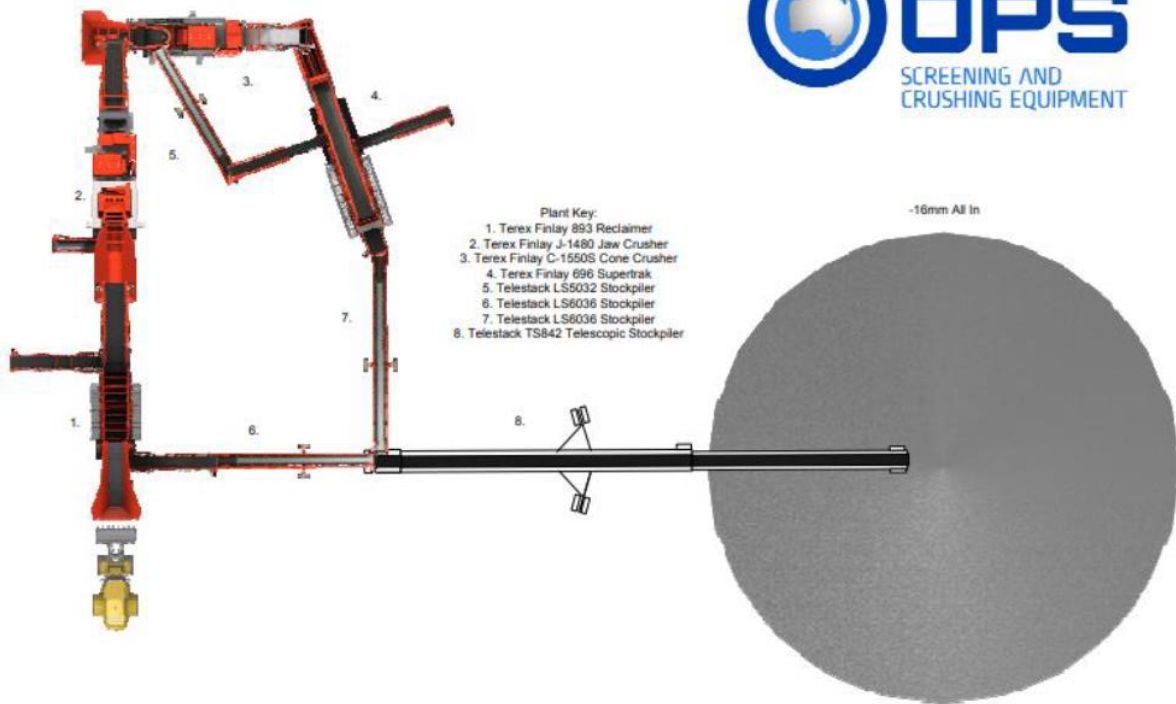


Figure 1: Crushing and Screening Infrastructure

The example below shows the crushing screening plant in situ (Figure 2):



Figure 2: Showing Crushing and Screening Plant in Situ

This crushing and screening plant will have a dust suppression system consisting of a mister system around the plant. This system will deliver pressurised water to each material transfer point, where the material will be sprayed as it flows through the plant. The conceptual model plant dust suppression is given below (Figure 3):

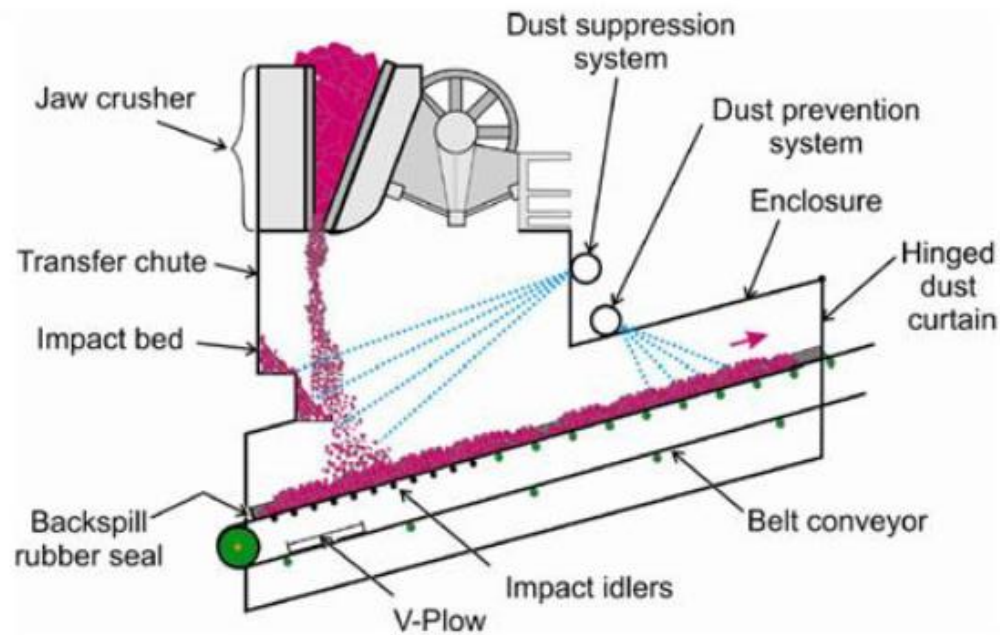


Figure 3: Dust Suppression system in Screening Operations

2.3 *Environmental Protection and Biodiversity Conservation Act 1999*

EPBC Referral

The Applicant holds EPBC referral 2012/6272, whereby the proposed action is deemed not a controlled action if undertaken in a particular matter. The referral has measures in place to avoid significant impacts to national heritage places located within the premises.

Kimberley Granite Quarries must ensure that all staff working within the premises are aware of the location and boundaries of all heritage sites identified within the premises and observe a 30-meter buffer zone (DSEWPaC, 2013).

2.4 *Rights in Water and Irrigation Act 1914*

Application for 11/17/21A permit to interfere with minor watercourse due to construction of access road submitted by Works Approval holder to the department.

2.5 *Groundwater Licence*

The Project has a groundwater license (GWL 177109) which approves an annual abstraction of up to 45,000 KL from the Canning-Kimberly groundwater area and is valid until 19 December 2033 (for use in dust management) (KGQ 2023b).

3. Risk assessment

The department assesses the risks of emissions from prescribed premises and identifies the potential source, pathway and impact to receptors in accordance with the *Guideline: Risk Assessments* (DWER 2020).

To establish a risk event there must be an emission, a receptor which may be exposed to that emission through an identified actual or likely pathway, and a potential adverse effect to the receptor from exposure to that emission.

3.1 Source-pathways and receptors

Emissions and controls

The key emissions and associated actual or likely pathway during premises construction and operation which have been considered in this decision report are detailed in Table 1 below. Table 1 also details the control measures the applicant has proposed to assist in controlling these emissions, where necessary.

Table 1: Proposed applicant controls

Emission	Sources	Potential pathways	Proposed controls
Construction			
Dust	Vehicle movements, mobilization and placement of crushing and screening plant.	Air/windborne pathway causing impacts to health and amenity	<ul style="list-style-type: none"> • A water truck available on the premises during all phases; and • Adherence to speed limits and driving to road and weather conditions to reduce potential dust impacts on vegetation and fauna.
Noise	Stockpiling of topsoil.		<ul style="list-style-type: none"> • All vehicles and machinery will be regularly maintained to ensure they are operating optimally and not producing excess noise or emissions; and • Vehicles will travel at low speeds within the tenement areas to protect fauna and reduce noise.
Operation			
Dust	Earthworks, Screening and transporting of sand and gravel materials, removal of topsoil, loading of gravel. Truck movement on unsealed roads	Air/windborne pathway causing impacts to health and amenity	<ul style="list-style-type: none"> • Crushing and Screening Plant fitted with dust suppression nozzles on each transfer point; • Dust suppression system built around a mister system delivering pressurized water to each material transfer point as shown on Figure 1; • Each transfer point fitted with a direct water mister that will deliver atomized water under pressure directly to the material as it flows past; • Screening Plant has wetting nozzles as shown in Figure 3; • A water truck available on the premises during all phases; • Crushing and screening activities will not take place during periods of strong winds; • Adherence to speed limits and driving to road and weather conditions to reduce potential dust impacts on vegetation and fauna; and • The Project site is surrounded by a

Emission	Sources	Potential pathways	Proposed controls
			vegetated limestone elevated range that is approximately 30 m higher than the site on the West, North and Eastern sides, The nearest community in the southern direction is over 30 km away.
Noise	<p>Earthworks, Screening and transporting of sand and gravel materials, loading of gravel.</p> <p>Screening plant engine</p> <p>Surface mobile equipment and vehicle (reversing beepers, engines)</p>	Air/windborne pathway causing impacts to health and amenity	<ul style="list-style-type: none"> All vehicles and machinery will be regularly maintained to ensure they are operating optimally and not producing excess noise or emissions; Screening and Quarrying activities will not be undertaken during periods of strong wind; and Vehicles will travel at low speeds within the tenement areas to protect fauna and reduce noise.
Sediment laden stormwater	<p>Earthworks, Screening and transporting of sand and gravel materials, removal of topsoil, loading of gravel.</p>	Overland runoff potentially causing ecosystem disturbance/ impacting surface water quality	<ul style="list-style-type: none"> Ingress of clean water into the quarry site during periods of high rainfall is minimized due to the quarry being on a hill formation approximately 15 m higher than the surrounding drainage features; The laydown area is approximately 5 m above the drainage system and is naturally protected by the drainage directional flow by the quarry site hill; The maximum distance of the local drainage area, prior to passing the quarry site, is 3 km to the north. The risk of disturbance to the local drainage area from the quarry is low due to this distance, and the surrounding topography. Outside of water used for dust suppression measures, there will be no discharge of water to the environment from crushing and screening activities; and Stormwater management measures to limit water egressing off the site into the surrounding environment will include bunding.
Hydrocarbon contamination	Spills from refueling, faulty vehicles and equipment.	Seepage to surface and groundwater below, impacts to flora and fauna, and contaminate soils	<ul style="list-style-type: none"> 4,000 L self bunded oil storage; 60,000 L self bunded diesel fuel storage will be used to store the site's required diesel fuel and act as the designated diesel refueling point, with bunded transfer points to ensure any spills during refuelling are contained on hardstand. This tank will have an integrated second wall for secondary containment. It will also consist of a fully

Emission	Sources	Potential pathways	Proposed controls
			<p>self-contained bunded area for dispensing equipment with a vented pump bay and accessible spill kit ;</p> <ul style="list-style-type: none"> • Regular inspections (start and end of shift) of operating equipment to identify if any leaks are occurring; • Transfer of diesel to occur at designated transfer points with spill protection and containment available; • Use of drip trays if a leak is detected. If a drip tray cannot adequately contain a minor leak, the operation of the machinery will cease until repaired; • All vehicles and other equipment regularly maintained and stocked with appropriate spill kit equipment; • Hydrocarbons, lubricants, and greases are stored onsite in appropriately designated areas and segregated as required. All storage areas located on-site are also transportable. Hydrocarbons will be managed in accordance with <i>Australian Standard 1940-2004</i>; • The disposal of chemicals will take place in accordance with the appropriate policy and procedures applicable under the <i>Environmental Protection (Controlled Waste) Regulations 2004</i>. • Any contaminated material (e.g., hydrocarbon contamination soil) will be removed and disposed of at licensed facilities; and • As required, any spills defined under Section 72 of the EP Act and <i>Environmental Protection (Unauthorised Discharges) Regulations 2004</i> will be reported to DWER.

Receptors

In accordance with the *Guideline: Risk Assessment* (DWER 2020), the Delegated Officer has excluded the applicant's employees, visitors, and contractors from its assessment. Protection of these parties often involves different exposure risks and prevention strategies and is provided for under other state legislation.

Table 2, Figure 4, Figure 5, Figure 6 and Figure 7 and below provides a summary of potential human and environmental receptors that may be impacted as a result of activities upon or emission and discharges from the prescribed premises (*Guideline: Environmental Siting* (DWER 2020)).

Table 2: Sensitive human and environmental receptors and distance from prescribed activity

Human receptors	Distance from prescribed activity
Gogo Pastoral Station	23 km approximately North-West from premises
Residential receptors The closest residential receptor is the Joy Springs (Eight Mile Community), an Aboriginal community.	10 km northeast from premises Refer to Figure 4.
Aboriginal Heritage Site <ul style="list-style-type: none"> • Gooniyandi Combined #2 Native Title Claim • Saddlers Yard - Mythological • Pinbilly 4, 8, 9 and 10 – Artefacts/Scatter • Outcamp Hill – Skeletal material/burial • West Kimberley National Heritage Area. • Potential unregistered 	Outcamp Hill within the premises boundary within 3km buffer. Proposed actions and strategies to avoid heritage sites set out by EPBC (EPBC 2012/6272) to avoid significant impacts, including 30m buffer zones, staff awareness, consultation with traditional owners. Refer to Figure 5.
Environmental receptors	Distance from prescribed activity
Native Flora: <ul style="list-style-type: none"> • Densely Wooded Creek Lines representing 2% of the surveyed area. • Grassland with Scattered Trees representing 98% of the surveyed area. Eucalypts, <i>Acacia</i> , and some minor <i>Casuarina</i> trees are present.	Within premises boundary. Refer to Figure 6.
Fauna <ul style="list-style-type: none"> • <i>Dasyurus hallucatus</i> (Northern Quoll) EPBC Act - Endangered • <i>Macrotis lagotis</i> (Greater Bilby) EPBC Act - Vulnerable • <i>Trichosurus vulpecula arnhemensis</i> (Northern Brushtail Possum) EPBC Act - Vulnerable • <i>Rostratula australis</i> (Australian Painted Snipe) EPBC Act - Endangered • <i>Malurus coronatus coronatus</i> (Purplecrowned Fairy Wren (Western)) Endangered • <i>Polytelis alexandrae</i> (Princess Parrot) Priority 4 DBCA • <i>Falco hypoleucos</i> (Grey Falcon) BC Act - Vulnerable • <i>Elanus scriptus</i> (Letterwinged Kite) DBCAs – Priority 4 • <i>Charadrius veredus</i> (Oriental Plover) EPBC Act - Migratory • <i>Actitis hypoleucos</i> (Common Sandpiper) EPBC Act - Migratory • <i>Pandion haliaetus</i> (Osprey) EPBC Act - Migratory 	20km buffer zone assessment undertaken by RPM – migratory birds. Possible likelihood of occurrence. <i>Westraltrachia recta</i> – 5-8km from prescribed premises – potentially occurring but premises does not match primary habitat (basins, coastal and oceans). Assessed under part IV – EPBC referral (EPBC 2012/6272).

<ul style="list-style-type: none"> • <i>Westraltrachia recta</i> (Camaenid Land Snail) Priority 1 – Potentially Occurring 	
<p>RIWI Act – Groundwater Canning-Kimberley Groundwater Area</p>	<p>Within the premises - Potable water quality Groundwater at 6m, good quality flow at 12m (KGQ 2023b)</p>
<p>RIWI Act – Surface Water Fitzroy River and Tributaries</p> <ul style="list-style-type: none"> - Nipper Creek - Blariyaning Creek <p>Various unnamed creeks</p>	<p>Surface water within the premises boundary.</p> <p>Nipper creek – within premises – 50m from crushing and screening.</p> <p>Blariyaning Creek – 3 km from crushing and screening plant.</p> <p>Unnamed creeks (mostly intermittent) run through proposed activity area.</p> <p>Refer to Figure 7.</p>

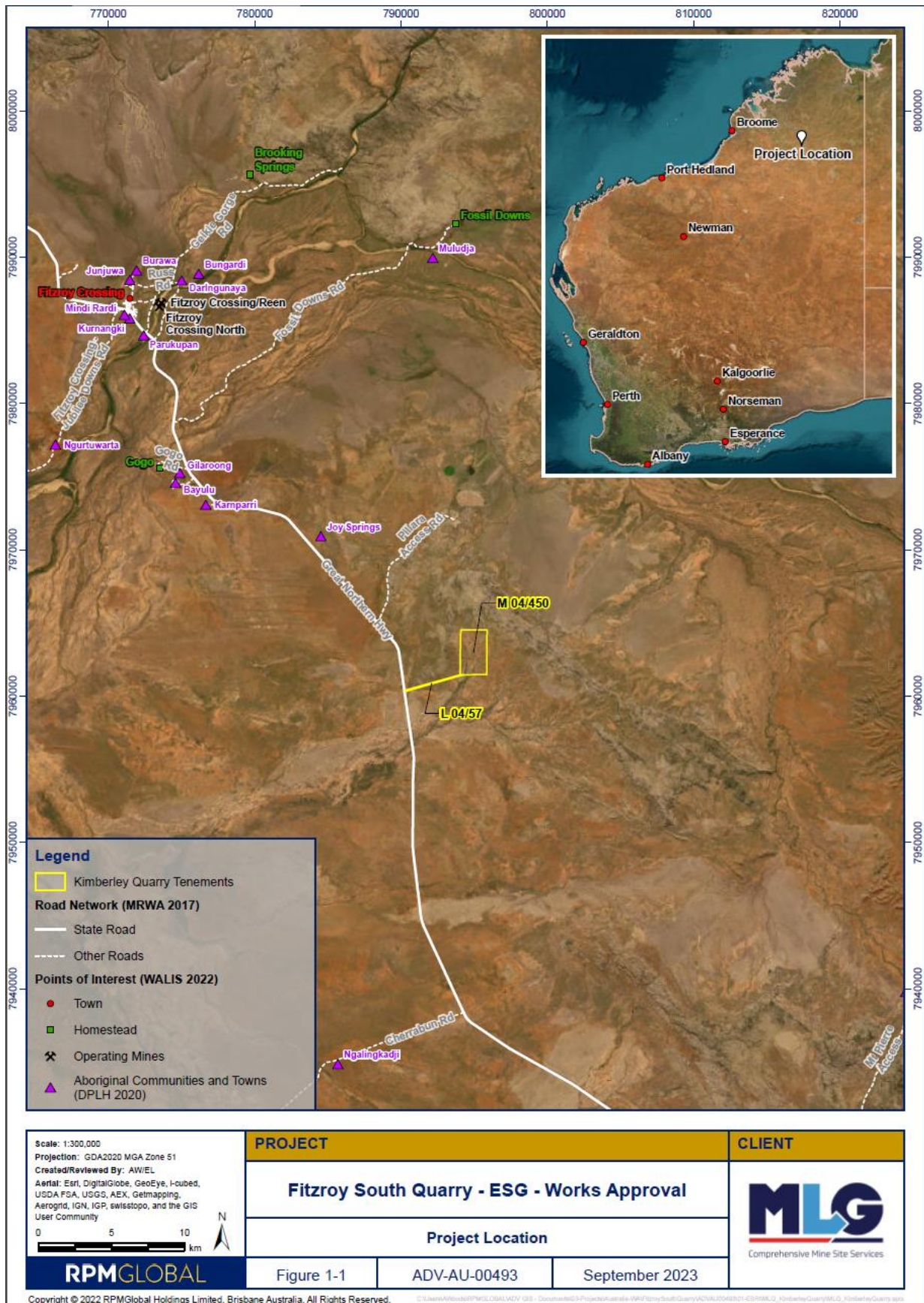


Figure 4: Premises sitting (RPM Global, 2023)

Works approval: W6806/2023/1

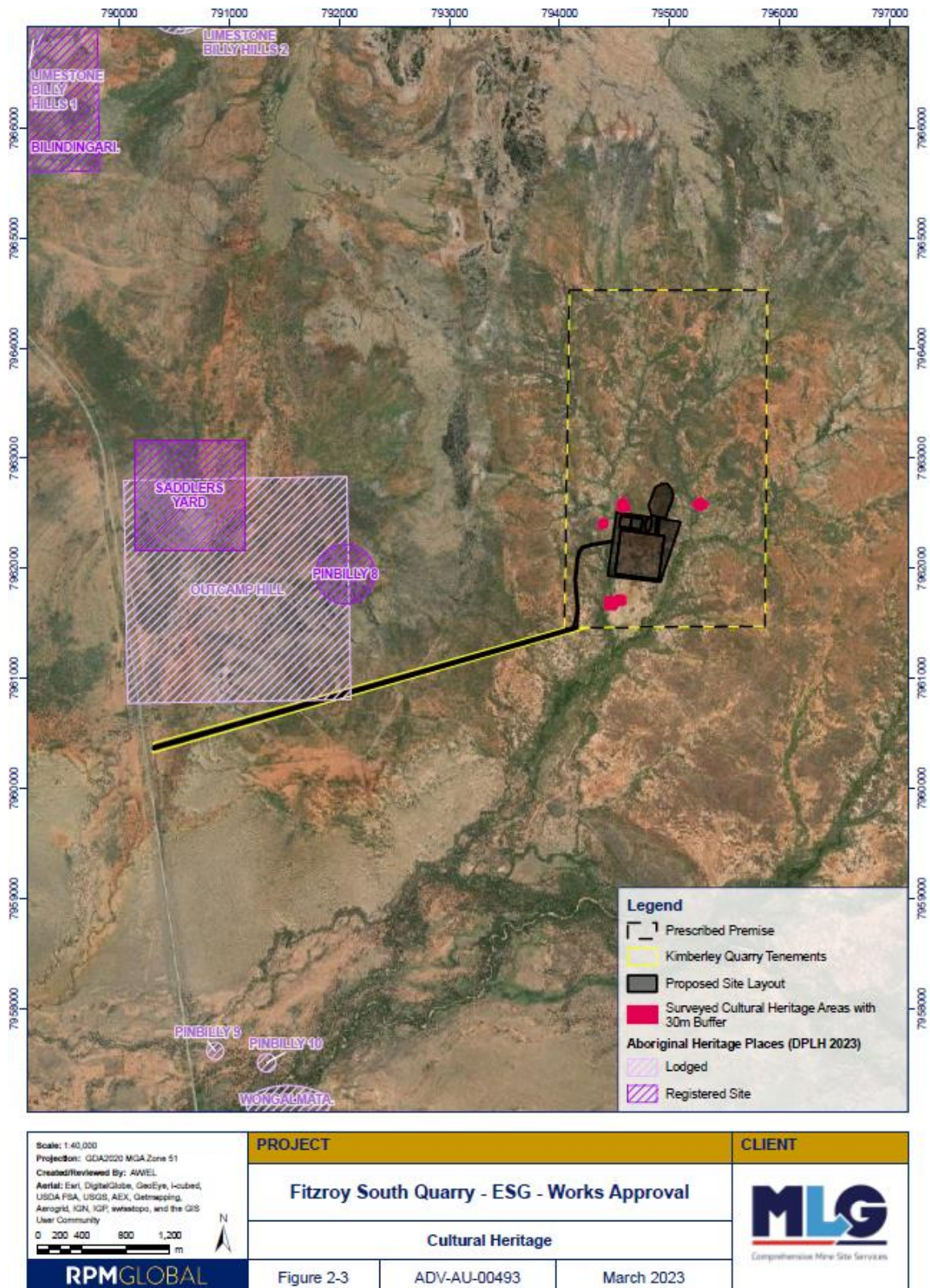


Figure 5: Aboriginal and cultural Heritage places (RPM Global, 2023)



Figure 6: Vegetation Mapping (RPM Global, 2023)

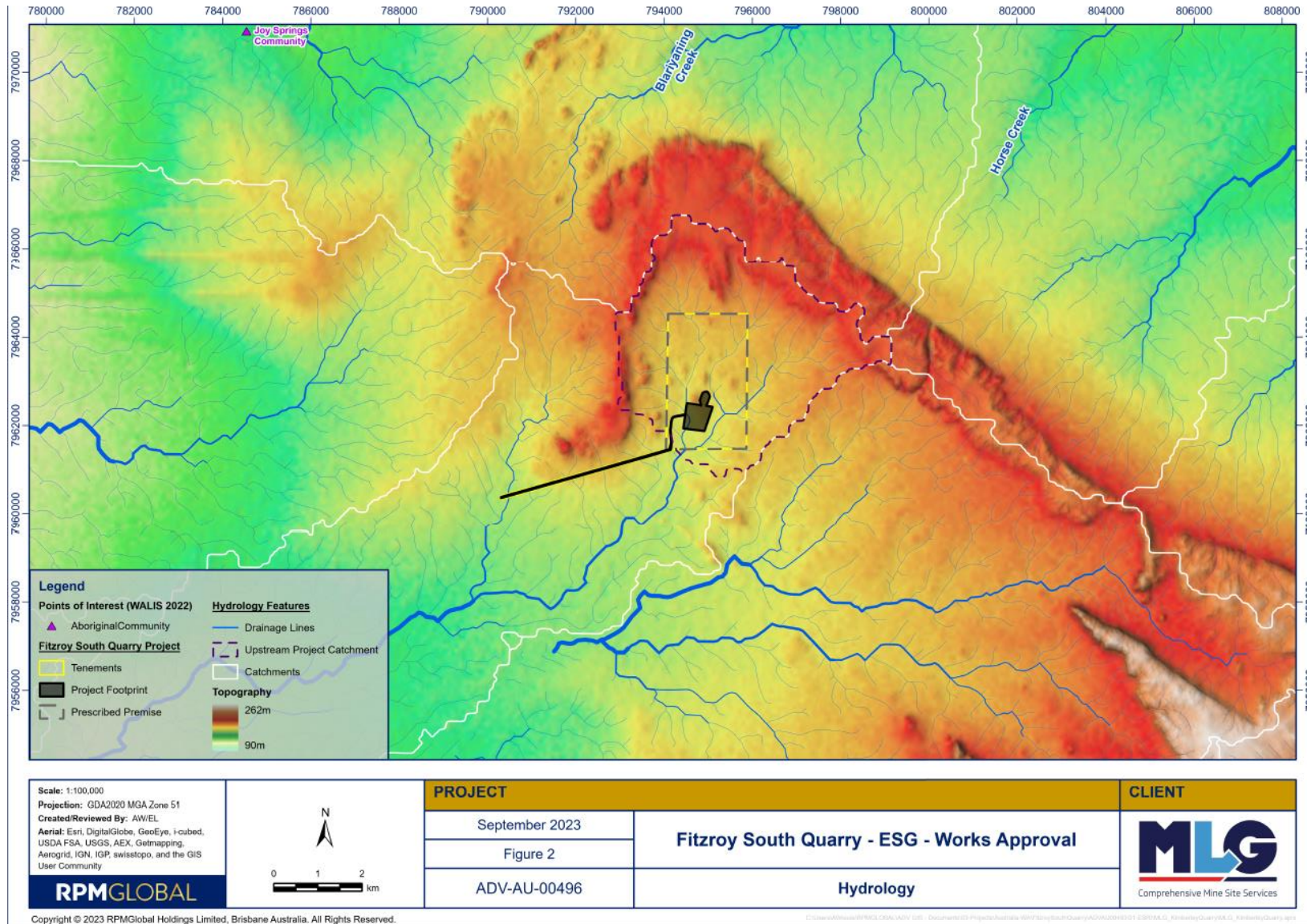


Figure 7: Hydrology (RPM Global, 2023)

Works approval: W6806/2023/1



3.2 Risk ratings

Risk ratings have been assessed in accordance with the *Guideline: Risk Assessments* (DWER 2020) for each identified emission source and takes into account potential source-pathway and receptor linkages as identified in Section 3.1. Where linkages are in-complete they have not been considered further in the risk assessment.

Where the applicant has proposed mitigation measures/controls (as detailed in Section 3.1), these have been considered when determining the final risk rating. Where the delegated officer considers the applicant's proposed controls to be critical to maintaining an acceptable level of risk, these will be incorporated into the works approval as regulatory controls.

Additional regulatory controls may be imposed where the applicant's controls are not deemed sufficient. Where this is the case the need for additional controls will be documented and justified in Table 3.

Works approval W6806 that accompanies this decision report authorises construction and time-limited operations. The conditions in the issued works approval, as outlined in Table 3 have been determined in accordance with *Guidance Statement: Setting Conditions* (DER 2015).

A licence is required following the time-limited operational phase authorised under the works approval to authorise emissions associated with the operation of the premises i.e. crushing and screening plant. A risk assessment for the operational phase has been included in this decision report, however licence conditions will not be finalised until the department assesses the licence application.



Table 3: Risk assessment of potential emissions and discharges from the premises during construction and operation

Risk events					Risk rating ¹ C = consequence L = likelihood	Applicant controls sufficient?	Conditions ² of works approval	Justification for additional regulatory controls
Sources / activities	Potential emission	Potential pathways and impact	Receptors	Applicant controls				
Construction								
Vehicle movements, mobilization and placement of crushing and screening plant.	Dust	Air/windborne pathway causing impacts to health and amenity	Surrounding vegetation	Refer to Section 3.1	C = Slight L = Possible Low Risk	Y	NA	NA
Stockpiling of topsoil.			Tributaries (50m)					
Construction of stormwater channels and stormwater sump.	Noise			Refer to Section 3.1	C = Slight L = Possible Low Risk	Y	NA	NA
Operation (including time-limited-operations operations)								
Earthworks Screening and transporting of sand and gravel materials, removal of topsoil, loading of gravel. Vehicle movements Surface mobile equipment and vehicle (reversing beepers, engines)	Dust	Air/windborne pathway causing impacts to health and amenity	Tributaries (50m)	Refer to Section 3.1	C = Slight L = Possible Low Risk	Y	Condition 1, Table 1 Design and construction / installation requirements - Machinery fitted with dust suppression nozzles and sprayers and sprinklers Condition 6, Table 2 Infrastructure and equipment requirements during time limited operations - maintenance requirements	NA

Works approval: W6806/2023/1



Risk events					Risk rating ¹	Applicant controls sufficient?	Conditions ² of works approval	Justification for additional regulatory controls
Sources / activities	Potential emission	Potential pathways and impact	Receptors	Applicant controls	C = consequence L = likelihood			
	Sediment laden stormwater	Overland runoff potentially causing ecosystem disturbance/ impacting surface water quality	Tributaries (50m) Soils Vegetation	Refer to Section 3.1	C = Minor L = Likely Medium Risk	Y	Condition 1, Table 1 Design and construction / installation requirements - of stormwater management measures.	NA
Spills from refueling, faulty vehicles and equipment.	Hydrocarbon contamination	Seepage to surface and groundwater below, impacts to flora and fauna, and contaminate soils	Tributaries (50m) Soils Vegetation Groundwater	Refer to Section 3.1	C = Slight L = Unlikely Low Risk	Y	NA	NA

Note 1: Consequence ratings, likelihood ratings and risk descriptions are detailed in the *Guideline: Risk Assessments* (DWER 2020).

Note 2: Proposed applicant controls are depicted by standard text. **Bold and underline text** depicts additional regulatory controls imposed by department.

4. Consultation

Table 4 provides a summary of the consultation undertaken by the department.

Table 4: Consultation

Consultation method	Comments received	Department response
Application advertised on the department's website on 31 July 2023	No comments received	NA
Local Government Authority, Shire of Derby-West Kimberley, advised of proposal by email on 27 July 2023	<p>The Shire of Derby-West Kimberley answered on 09 August 2023:</p> <p>“As the proposed works are being undertaken on pastoral leases they can be approved under the <i>Mining Act 1978</i> without the need to seek and obtain approval under the Planning and Development Act 2005 and the Shire's local planning framework (i.e. IDO No.9).</p> <p>I don't see any major issues or concerns with what's proposed provided it is implemented in accordance with approvals required under other separate legislation to deal with any potential negative impacts.</p> <p>I'd therefore respond to DWER's request by advising the Shire has no objection to the proposed development subject to compliance with all relevant legislative and regulatory requirements noting that development approval is not required from the Shire”.</p>	Noted
Gooniyandi Aboriginal Corporation advised of proposal by email 27 July 2023	<p>The Gooniyandi Aboriginal Corporation answered on 20 October 2023.</p> <p>Requested extension to provide comments. DWER agreed and then followed up. Stakeholder has advised that they will invite Applicant representatives to their next board meeting. No specific comments provided.</p>	Noted.
Department of Mines, Industry Regulation and Safety (DMIRS) was advised of proposal by email on 27 July 2023	<p>DMIRS answered on 03 August 2023.</p> <p>The description of these activities appears consistent with Mining Proposal. DMIRS notes the site plans differ slightly between the supporting document, but DMIRS has no objection regarding the referral of application for a works approval.</p>	Noted
Department of Planning, Lands and Heritage (DPLH) was advised of proposal by email on 27 July 2023	<p>DPLH answered on 07 September 2023:</p> <p>“The subject development footprint falls within the Gooniyandi Combined #2 Native Title determination area, as represented by the Gooniyandi Aboriginal Corporation RNTBC. In reviewing the subject area against the Aboriginal Cultural Heritage Directory, we can confirm the works footprint does not intersect the actual boundary of any known Aboriginal Cultural Heritage places as currently administered by DPLH.</p>	Noted

	<p>DPLH recommends ongoing consultation is undertaken with the Goonyandi Aboriginal Corporation in regard to the proposed activities that involve new ground disturbance. These discussions should also include whether any further Aboriginal Heritage surveys are required to be undertaken as part of the project, or if those that have been undertaken to date by Terra Rosa in 2013 suffice and are fit for purpose.</p> <p>Currently the <i>Aboriginal Cultural Heritage Act 2021 (ACH Act)</i> remains the relevant legislation through which to seek approvals and the proponent should be across whether any future activities are compliant with relevant legislation”.</p>	
<p>Applicant was provided with draft documents on 24 October 2023</p>	<p>Comment to draft documents received on 01 November 2023.</p> <p>Minor formatting changes in Condition 1, Table 1 and Table 2.</p>	<p>Noted the applicant comments to the draft and has made the suggested changes in the final instrument.</p>

5. Conclusion

Based on the assessment in this decision report, the delegated officer has determined that a works approval will be granted, subject to conditions commensurate with the determined controls and necessary for administration and reporting requirements.

References

1. Department of Sustainability, Environment, Water, Population and Communities (DSEWPaC) 2013, *EPBC 2012/6272* (REF: A2169739).
2. Department of Environment Regulation (DER) 2015, *Guidance Statement: Setting Conditions*, Perth, Western Australia.
3. Department of Water and Environmental Regulation (DWER) 2020, *Guideline: Environmental Siting*, Perth, Western Australia.
4. DWER 2020, *Guideline: Risk Assessments*, Perth, Western Australia.
5. Goonyandi Aboriginal Corporation 2023, *Request for extended consultation* (REF: A2199789).
6. Kimberley Granite Quarries (KGQ) 2023, *Fitzroy South Quarry Works Approval – Prescribed Premises Category: 12*. (REF: A2169734).
7. KGQ 2023b, *Response to Requested Further Information Regarding Works Approval Application* (REF: DWERDT842348)

Appendix 2: Application validation summary

SECTION 1: APPLICATION SUMMARY	
Application type	
Works approval	<input checked="" type="checkbox"/>
Date application received	04 April 2023
Applicant and Premises details	
Applicant name/s (full legal name/s)	Kimberley Granite Quarries Pty Ltd
Premises name	Fitzroy South Quarry
Premises location	M 04/450 Located 35 km southeast of Fitzroy Crossing Western Australia off the Great Northern Highway.
Local Government Authority	Shire of Derby-West Kimberley
Application documents	
HPCM file reference number:	DER2023/000263
Key application documents (additional to application form):	<p>1A: <i>Proof of Occupier Status</i> 1B: <i>ASIC company extract</i> 2: <i>Premises map</i> 3B: <i>Proposed Activities</i></p> <ul style="list-style-type: none"> - <i>Existing Environment</i> - <i>Project Description</i> - <i>Compliance and Consultation</i> - <i>Control of Emissions</i> <p>3C: <i>Map of Area</i> 5: <i>Other Approvals and Consultation</i></p> <ul style="list-style-type: none"> - <i>EPBC Decision</i> <p>6A: <i>Emissions and discharges</i></p> <ul style="list-style-type: none"> - <i>Submitted in 3B</i> <p>7: <i>Siting and Locations</i></p>
Scope of application/assessment	

Summary of proposed activities or changes to existing operations.

New Works Approval application submitted by Kimberly Granite Quarries Pty Ltd for quarry located 35km SE of Fitzroy Crossing.

The Project is a small-scale granite mining operation that will consist of one open-pit quarry and associated infrastructure. A mobile crushing and screening plant will be based near the quarry. The granite sourced from the Project will primarily be used in the infrastructure industry.

Included infrastructure: crushing and screening plant producing material of 37mm and 50mm, designated crushing pad

Processing:

The granite material produced from the pit will be sized and screened on-site. Target production periods will be between April and November in the Dry Season experienced in the Kimberley area.

An initial production rate of 1,000 tonnes per day over a 12-hour shift is targeted for the Fitzroy South Quarry. Annualised production of 200,000 tpa is the current objective for the Project.

The mobile crusher and screener will be all portable and most likely track-mounted on skid units. The quarrying activity is not expected to produce any overburden or waste material.

Water Management

The Fitzroy South Quarry excavation is proposed to be a pit with an overall pit floor depth of approximately 30 meters. The shallow nature of the proposed pit will facilitate mining of the required material without penetration of the sub-surface water table. Water encountered within the pit confines will only be due to collection from rain events. Any water will be captured, stored, and utilized for dust mitigation within the crushing area.

GWL177109 is the closest bore to the premises, 3.6 km from the quarry site. The bore has a total depth of 24 m, with water at 6 m and good quality flows at 12m. The bore is located within an area of limestone that is completely removed from the granite formation targeted in the quarry area.

Dust Management

Dust management controls to be undertaken during construction and operation, include:

- A water truck will be always available on the premises

	<p>during all phases.</p> <ul style="list-style-type: none"> Crushing and screening activities will not be undertaken during periods of strong wind. The Project has a groundwater license (GWL 177109) which approves an annual abstraction of up to 45,000KL from the Canning-Kimberly groundwater area and is valid until 19 December 2033 (for use in dust management). The Project site is surrounded by a vegetated limestone elevated range that is approximately 30 m higher than the site on the West, North and Eastern sides, The nearest community in the southern direction is over 30 km away. Crushing and screening plant are fitted with dust suppression nozzles as shown in Attachment 1.
--	--

Category number/s (activities that cause the premises to become prescribed premises)

Table 1: Prescribed premises categories

Prescribed premises category and description	Proposed production or design capacity	Proposed changes to the production or design capacity (amendments only)
Category 12: Screening etc. of material	200,000 tonnes per annum	

Legislative context and other approvals

Has the applicant referred, or do they intend to refer, their proposal to the EPA under Part IV of the EP Act as a significant proposal?	Yes <input type="checkbox"/> No <input checked="" type="checkbox"/>	Referral decision No: Managed under Part V <input type="checkbox"/> Assessed under Part IV <input checked="" type="checkbox"/> Assessed as not a controlled action subject to the applicant following rules specified by the EPBC.
Does the applicant hold any existing Part IV Ministerial Statements relevant to the application?	Yes <input type="checkbox"/> No <input checked="" type="checkbox"/>	Ministerial statement No: EPA Report No:
Has the proposal been referred and/or assessed under the EPBC Act?	Yes <input checked="" type="checkbox"/> No <input type="checkbox"/>	Reference No: 2012/6272 Not deemed a controlled action as long as undertaken in a particular manner – measures in place to prevent significant impact.
Has the applicant demonstrated occupancy (proof of occupier status)?	Yes <input checked="" type="checkbox"/> No <input type="checkbox"/>	Mining lease / tenement <input checked="" type="checkbox"/> M04/450 Expiry: 19/12/2033
Has the applicant obtained all relevant planning approvals?	Yes <input checked="" type="checkbox"/> No <input checked="" type="checkbox"/> N/A <input type="checkbox"/>	Clearing permit submitted to DMIRS 14/03/2023

<p>Has the applicant applied for, or have an existing EP Act clearing permit in relation to this proposal?</p>	<p>Yes <input checked="" type="checkbox"/> No <input type="checkbox"/></p>	<p>CPS No: N/A Native Vegetation Clearing permit submitted to DMIRS 14/03/2023</p>
<p>Has the applicant applied for, or have an existing CAWS Act clearing licence in relation to this proposal?</p>	<p>Yes <input type="checkbox"/> No <input checked="" type="checkbox"/></p>	<p>Application reference No: N/A Licence/permit No: N/A Licence not required</p>
<p>Has the applicant applied for, or have an existing RIWI Act licence or permit in relation to this proposal?</p>	<p>Yes <input checked="" type="checkbox"/> No <input type="checkbox"/></p>	<p>Application reference No: Licence/permit No: Permit to interfere with the bed and Banks of a watercourse was submitted March 2023 Groundwater licence (GWL177109) approves an annual abstraction of up to 45, 000kL from the Canning-Kimberly groundwater area. This licence is valid until 19 December 2033. Fitzroy River and Tributaries</p>
<p>Does the proposal involve a discharge of waste into a designated area (as defined in section 57 of the EP Act)?</p>	<p>Yes <input type="checkbox"/> No <input checked="" type="checkbox"/></p>	<p>Name: N/A Type: Proclaimed Groundwater Area/Surface Water Area Has Regulatory Services (Water) been consulted? Yes <input type="checkbox"/> No <input type="checkbox"/> N/A <input checked="" type="checkbox"/></p>
<p>Is the Premises situated in a Public Drinking Water Source Area (PDWSA)?</p>	<p>Yes <input type="checkbox"/> No <input checked="" type="checkbox"/></p>	<p>Name: N/A Priority: N/A Are the proposed activities/landuse compatible with the PDWSA (refer to <u>WQPN 25</u>)? Yes <input type="checkbox"/> No <input type="checkbox"/> N/A <input checked="" type="checkbox"/></p>
<p>Is the Premises subject to any other Acts or subsidiary regulations (e.g. <i>Dangerous Goods Safety Act 2004, Environmental Protection (Controlled Waste) Regulations 2004, State Agreement Act xxxx</i>)</p>	<p>Yes <input checked="" type="checkbox"/> No <input type="checkbox"/></p>	<p><i>EPBC Act 1999</i> <i>Mining Act 1978</i> <i>EP Act 1986</i> <i>BC Act 2016</i> <i>Aboriginal Heritage Act 1972</i> <i>Aboriginal Cultural Heritage Act 2021</i> <i>Native Title Act 1993</i> <i>RIWI Act 1914</i></p>

		<i>Contaminated Sites Act 2003</i>
Is the Premises within an Environmental Protection Policy (EPP) Area?	Yes <input type="checkbox"/> No <input checked="" type="checkbox"/>	N/A
Is the Premises subject to any EPP requirements?	Yes <input type="checkbox"/> No <input checked="" type="checkbox"/>	N/A
Is the Premises a known or suspected contaminated site under the <i>Contaminated Sites Act 2003</i> ?	Yes <input type="checkbox"/> No <input checked="" type="checkbox"/>	N/A Contaminated site 4km north