



Application for Works Approval Amendment

Part V Division 3 of the *Environmental Protection Act 1986*

Works Approval Number	W6907/2024/1
Works Approval Holder	Premier Metals Corporation Pty Ltd
ACN	635 161 992
File Number	APP-0031222
Premises	<p>Premier Metal Recyclers 87 and 89 Kelvin Road Maddington WA 6109</p> <p>Legal description – Lot 25 on Diagram 90351 Certificate of Title Volume 2062 Folio 394 and; Lot 201 on Deposited Plan 30719 Certificate of Title Volume 1159 Folio 415 As defined by the coordinates in Schedule 1 of the Revised Works Approval</p>
Date of Report	15 December 2025
Decision	Revised works approval granted

Table of Contents

1. Decision summary	1
2. Scope of assessment	1
2.1 Regulatory framework	1
2.2 Application summary	1
3. Risk assessment	1
3.1 Source-pathways and receptors	2
3.1.1 Emissions and controls	2
3.1.2 Receptors	4
3.2 Risk ratings	7
4. Consultation	11
5. Conclusion	11
5.1 Summary of amendments	11
References	11

Table 1: Works Approval Holder controls	2
Table 2: Sensitive human and environmental receptors and distance from prescribed activity	5
Table 3. Risk assessment of potential emissions and discharges from the Premises during construction, commissioning and operation	8
Table 4: Consultation	11
Table 5: Summary of works approval amendments	11
Figure 1: Distance to sensitive receptors	6

1. Decision summary

Works Approval W6907/2014/1 is held by Premier Metals Corporation Pty Ltd (Works Approval Holder) for the Premier Metal Recyclers (the Premises), located at 87 and 89 Kelvin Road Maddington WA

This Amendment Report documents the assessment of potential risks to the environment and public health from proposed changes to the emissions and discharges during the construction and operation of the Premises. As a result of this assessment, Revised Works Approval W6907/2024/1 has been granted.

2. Scope of assessment

2.1 Regulatory framework

In completing the assessment documented in this Amendment Report, the department has considered and given due regard to its Regulatory Framework and relevant policy documents which are available at <https://dwer.wa.gov.au/regulatory-documents>.

2.2 Application summary

On 10 September 2025, the Works Approval Holder submitted an application to the department to amend Works Approval W6907/2024/1 under section 59 and 59B of the *Environmental Protection Act 1986* (EP Act). The proposed amendment seeks to:

- Include a new lot (Lot 201 – 89 Kelvin Road, Maddington) within the prescribed premises boundary; and
- Install and construct new plant and equipment, including:
 - Lefort Konkeror 1000 Shear Baler;
 - Weighbridge;
 - Hardstand surface with engineered drainage and sediment traps; and
 - Boundary fencing, security gates, and CCTV, integrated with existing operations at Lot 87.

The applicant has not applied to increase the approved annual throughput for the premises. The inclusion of Lot 201 (89 Kelvin Road, Maddington) is intended to support the existing operations by enhancing functionality, efficiency, and safety, across both sites. The additional lot will provide improved space for material handling, logistics, and vehicle maneuvering, support the installation of new plant and equipment; and enable better segregation between traffic, processing, and storage areas. The works approval holder has received Development Approval (DA24/00640) from the City of Gosnells for the premises located at Lot 201 – 89 Kelvin Road, Maddington.

3. Risk assessment

The department assesses the risks of emissions from prescribed premises and identifies the potential source, pathway and impact to receptors in accordance with the *Guideline: Risk assessments* (DWER 2020).

To establish a Risk Event there must be an emission, a receptor which may be exposed to that emission through an identified actual or likely pathway, and a potential adverse effect to the receptor from exposure to that emission.

3.1 Source-pathways and receptors

3.1.1 Emissions and controls

The key emissions and associated actual or likely pathway during premises construction and operation which have been considered in this Amendment Report are detailed in Table 1 below. Table 1 also details the proposed control measures the Works Approval Holder has proposed to assist in controlling these emissions, where necessary.

Table 1: Works Approval Holder controls

Emission	Sources	Potential pathways	Proposed controls
Construction			
Dust	Installation of Baler Installation of weigh bridge Construction of hardstand, boundary fencing and security gates	Air/windborne pathway	General housekeeping procedures such as water suppression, low-speed limits, and regular sweeping. Clear directional signage and traffic control measures will be installed to ensure the safe and efficient movement of vehicle
Noise	Vehicle movements	Air/windborne pathway	Noise will be managed in accordance with the <i>Environmental Protection (Noise) Regulations 1997</i> via equipment mufflers, daytime operation limits, and acoustic shielding where required
Operation			
Dust	Sorting, handling, and processing of scrap metals using the shear/baler and other equipment	Air/windborne pathway	A hardstand surface will be installed for heavy vehicle movement and the storage of processed and unprocessed materials. General housekeeping procedures such as water suppression, low-speed limits, and regular sweeping.
Noise/vibration	Temporary storage of processed and unprocessed materials	Air/windborne pathway	Noise will be managed in accordance with the <i>Environmental Protection (Noise) Regulations 1997</i> via equipment mufflers, daytime operation limits, and acoustic shielding where required
Fire/smoke	Traffic movements and deliveries Sorting and load preparation	Air/windborne pathway	Emergency exits, assembly points, fire extinguishers, and first-aid kits will be clearly marked and regularly maintained Secure fencing will be installed around the site, with locked gates and CCTV cameras monitored in conjunction with the existing premises. All waste streams will remain strictly

Emission	Sources	Potential pathways	Proposed controls
			<p>segregated.</p> <p>Facility truck drivers may perform an initial inspection during pickup and inspect incoming loads at the scale and/or when unloaded.</p> <p>Site supervisors will conduct regular inspections of the bin storage and collection areas.</p> <p>All work areas, access ways, and outdoor spaces will remain free of waste and debris at all times.</p> <p>Waste accumulation outside designated areas is strictly prohibited.</p>
Windblown waste/floc		Air/windborne pathway	<p>Secure fencing will be installed around the site with locked gates.</p> <p>All waste bins will be sealed when not in use.</p> <p>Site supervisors will conduct regular inspections of the bin storage and collection areas.</p> <p>All work areas, access ways, and outdoor spaces will free of waste and debris at all times.</p>
Potentially contaminated stormwater		<p>Overland runoff</p> <p>Seepage to soils and groundwater</p>	<p>A hardstand surface with engineered stormwater drainage will be provided.</p> <p>Stormwater will be treated through approved drainage systems including Stormceptor Class 1 system, silt traps, and infiltration soak wells to prevent contamination of off-site drainage.</p> <p>All waste streams will remain strictly segregated.</p> <p>All work areas, access ways, and outdoor spaces will free of waste and debris at all times.</p> <p>Waste accumulation outside of designated areas is strictly prohibited</p>
Firefighting water		<p>Overland runoff</p> <p>Seepage to soils and groundwater</p>	None proposed
Spills of chemicals and hydrocarbon and spills of dangerous or hazardous waste		<p>Overland runoff</p> <p>Seepage to soils and</p>	<p>A hardstand surface with engineered stormwater drainage will be provided.</p> <p>There will be no vehicle dismantling, stripping, mechanical repairs, or</p>

Emission	Sources	Potential pathways	Proposed controls
		groundwater	<p>draining of oil, petrol, or hazardous fluids on this site.</p> <p>All spills will be cleaned immediately using appropriate spill kits and equipment.</p> <p>Spill kits will be available and maintained on-site.</p> <p>Site supervisors will conduct regular inspections of the bin storage and collection areas.</p> <p>All work areas, access ways, and outdoor spaces will free of waste and debris at all times.</p> <p>Waste accumulation outside designated areas is strictly prohibited.</p> <p>An oil-water separator system is installed at 87 Kelvin Road and is available for use in exceptional circumstances if required.</p>

3.1.2 Receptors

In accordance with the *Guideline: Risk assessments* (DWER 2020), the Delegated Officer has excluded employees, visitors and contractors of the Works Approval Holder’s from its assessment. Protection of these parties often involves different exposure risks and prevention strategies, and is provided for under other state legislation.

Table 2 below provides a summary of potential human and environmental receptors that may be impacted as a result of activities upon or emission and discharges from the prescribed premises (*Guideline: Environmental siting* (DWER 2020)).

Table 2: Sensitive human and environmental receptors and distance from prescribed activity

Human receptors	Distance from prescribed activity
Residential Premises	150 m south of the premises boundary 200 m southeast of the premises boundary 600 m northwest of the premises boundary
Industrial premises	Immediately adjacent to the premises are other industrial premises
Environmental receptors	Distance from prescribed activity
Brixton Street Swamps	1.6 km northeast of the premises boundary
Geomorphic wetlands	Premises located within a geomorphic palusplain Canning River palusplain located 1.6 km southwest of the premises boundary
Bickley Brook (drains into the Canning River) - Resource enhancement wetland	150 m northeast of the premises boundary
Proclaimed area (RIWI Act 1911) – Perth Groundwater Area	Premised located within the proclaimed Perth Groundwater Area
Priority and Threatened Ecological Communities (PEC/TECs)	P3 – Priority ecological community is located 800 m east of the premises boundary
Underlying groundwater	Depth to groundwater is located approximately 5 and 8 metres below ground level (mBGL) (Perth Groundwater Map) with groundwater flow inferred to the west.

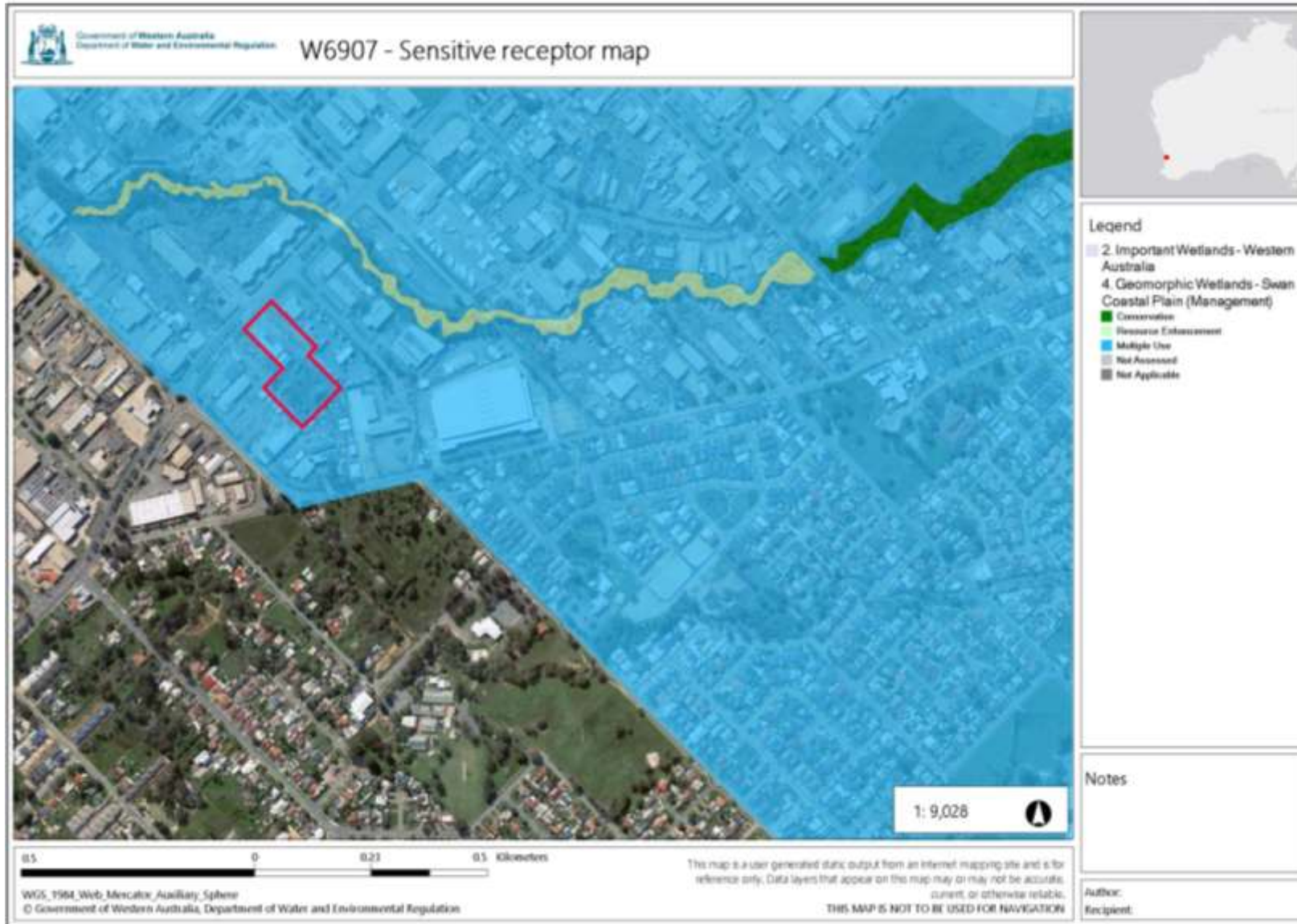


Figure 1: Distance to sensitive receptors

Works Approval: W6907/2024/1

IR-T15 Amendment report template v3.0 (May 2021)

3.2 Risk ratings

Risk ratings have been assessed in accordance with the *Guideline: Risk Assessments* (DWER 2020) for those emission sources which are proposed to change and takes into account potential source-pathway and receptor linkages as identified in Section 3.1. Where linkages are incomplete they have not been considered further in the risk assessment.

Where the Works Approval Holder has proposed mitigation measures/controls (as detailed in Section 3.1), these have been considered when determining the final risk rating. Where the Delegated Officer considers the Works Approval Holder's proposed controls to be critical to maintaining an acceptable level of risk, these will be incorporated into the works approval as regulatory controls.

Additional regulatory controls may be imposed where the Works Approval Holder's controls are not deemed sufficient. Where this is the case the need for additional controls will be documented and justified in Table 3.

The Revised Works Approval W6907/2024/1 that accompanies this Amendment Report authorises construction and time-limited operations. The conditions in the Revised Works Approval have been determined in accordance with *Guidance Statement: Setting Conditions* (DER 2015).

A licence is required following the time-limited operational phase authorised under the works approval to authorise emissions associated with the operation of the Premises. A risk assessment for the operational phase has been included in this Amendment Report, however licence conditions will not be finalised until the department assesses the licence application.

Table 3. Risk assessment of potential emissions and discharges from the Premises during construction, commissioning and operation

Risk Event					Risk rating ¹ C = consequence L = likelihood	Works Approval Holder's controls sufficient?	Conditions ² of works approval	Justification for additional regulatory controls/ DWER comments
Source/Activities	Potential emission	Potential pathways and impact	Receptors	Works Approval Holder's controls				
Construction								
Installation of Lefort Konkeror 1000 Shear Baler, weigh bridge Construction of hardstand, Boundary fencing and security gates Vehicle movement	Dust	Air/windborne pathway causing impacts to health and amenity	Residences within 150 m of premises Immediately adjacent industrial premises Priority ecological community approximately 800 m east of the premises boundary	Refer to Section 5.1	C = Minor L = Rare Low Risk	Y	N/A	The Delegated Officer considers that the works approval holder's proposed controls are likely to be sufficient at mitigating dust emissions during construction. Further management of dust emissions is provided via the general provisions of the EP Act
	Noise		Refer to Section 5.1	C = Minor L = Rare Low Risk	Y	N/A	The Delegated Officer has officer considers noise emissions can be effectively regulated by the <i>Environmental Protection (Noise) Regulations 1997</i> .	
Operation (including time-limited-operations operations)								
Sorting, handling, and processing of scrap metals using the shear/baler and other equipment Temporary storage of processed and unprocessed	Dust	Air/windborne pathway causing impacts to health and amenity	Residences within 150 m of premises Immediately adjacent industrial premises Priority ecological community	Refer to Section 5.1	C = Moderate L = possible Medium Risk	Y	Condition 1, 2, 3, 6, 9, 11, 18 and 30	The Delegated Officer considers that the proposed controls are likely to be sufficient to mitigate dust emissions during operation. Further management of dust emissions is provided via the general provisions of the EP

Works Approval: W6907/2024/1

Risk Event					Risk rating ¹ C = consequence L = likelihood	Works Approval Holder's controls sufficient?	Conditions ² of works approval	Justification for additional regulatory controls/ DWER comments
Source/Activities	Potential emission	Potential pathways and impact	Receptors	Works Approval Holder's controls				
materials			approximately 800 m east of the premises boundary					Act
Traffic movements and deliveries	Noise/vibration	Air/windborne pathway causing impacts to health and amenity		Refer to Section 5.1	C = Major L = Likely High Risk	Y	Condition 1, 2, 3, 6, 12, 18, 24, 25, 26, 27 and 30	The works approval holder has proposed to introduce a Lefort Konkeror1000 Shear Baler as part of this amendment. The Delegated Officer considers that the inclusion of this shear baler may increase overall noise emissions from the premises. The existing noise assessment condition will be used to determine overall noise emissions during time limited operations, with any further controls, if required, to be considered through the licensing application assessment.
Sorting and load preparation								
	Fire/smoke	Air/windborne pathway causing impacts to health and amenity		Refer to Section 5.1	C = Severe L = Unlikely High Risk	Y	Condition 1, 2, 3, 6, 7, 8, 9, 18, 21, 22, 23 and 30	The existing works approval condition requiring a Fire and Emergency Management Plan to be implemented will assist in reducing the risk of fire and mitigating potential impacts from smoke emissions.
	Windblown waste/floc	Air/windborne pathway causing impacts to health and		Refer to Section 5.1	C = Minor L = Unlikely Medium Risk	Y	Condition 1, 2, 3, 6, 10, 18 and 30	The Delegated Officer considers that the works approval holder's proposed controls and the existing conditions within the works

Risk Event					Risk rating ¹ C = consequence L = likelihood	Works Approval Holder's controls sufficient?	Conditions ² of works approval	Justification for additional regulatory controls/ DWER comments				
Source/Activities	Potential emission	Potential pathways and impact	Receptors	Works Approval Holder's controls								
		amenity						approval are likely to be sufficient at mitigating wind-blown waste and floc.				
	Potentially contaminated stormwater/	Overland runoff potentially causing ecosystem disturbance or impacting surface water quality	Priority ecological community approximately 800 m east of the premises boundary Underlying groundwater Proclaimed Perth Groundwater Area Bickley brook	Refer to Section 5.1	C = Moderate L = Unlikely Medium Risk	Y	Condition 1, 2, 3, 6, 8, 9, 13, 14, 15, 16, 17, 18, 20 and 30	The Delegated Officer considers that the works approval holder's proposed infrastructure and management controls are likely to be sufficient at mitigating emissions from contaminated stormwater.				
	Firefighting water							Refer to Section 5.1	C = Moderate L = Unlikely Medium Risk	N	Condition 7, 8, 9, 13, 14, 21, 22, 23 and 30	Condition 23 of the works approval requires the implementation of a Fire and Emergency Management Plan to ensure that firewater generated during emergency events does not enter stormwater systems or cause off-site contamination.
	Spills of chemicals and hydrocarbon and spills of dangerous or hazardous waste											Refer to Section 5.1

Note 1: Consequence ratings, likelihood ratings and risk descriptions are detailed in the *Guideline: Risk assessments* (DWER 2020).

Note 2: Proposed Works Approval Holder's controls are depicted by standard text. **bold and underline text** depicts additional regulatory controls imposed by department.

Works Approval: W6907/2024/1

4. Consultation

Table 4 provides a summary of the consultation undertaken by the department.

Table 4: Consultation

Consultation method	Comments received	Department response
Local Government Authority (City of Gosnells) advised of proposal (20/11/2025)	None received.	N/A
Works Approval Holder was provided with draft amendment on 03/12/2025.	The Works Approval holder has confirmed they have no objections to the proposed amendments and have waived the consultation period.	Noted.

5. Conclusion

Based on the assessment in this Amendment Report, the Delegated Officer has determined that a Revised Works Approval will be granted, subject to conditions commensurate with the determined controls and necessary for administration and reporting requirements.

5.1 Summary of amendments

Table 5 provides a summary of the proposed amendments and will act as record of implemented changes. All proposed changes have been incorporated into the Revised Works Approval as part of the amendment process.

Table 5: Summary of works approval amendments

Condition no.	Proposed amendments
Condition 1; Table 1	Design and construction / installation requirements for new shear baler, hardstand, weighbridge and boundary fencing added.
Condition 6; Table 2	Operational requirement for the weighbridge and fence added.
Schedule 1; Figure 5	Site layout for lot 201 added.
Schedule 1; Table 10	Premises coordinates updated.

References

1. Department of Environment Regulation (DER) 2015, *Guidance Statement: Setting Conditions*, Perth, Western Australia.
2. Department of Water and Environmental Regulation (DWER) 2020, *Guideline: Environmental Siting*, Perth, Western Australia.
3. DWER 2020, *Guideline: Risk Assessments*, Perth, Western Australia.