

KOOLAN IRON ORE MINE AND PORT FACILITY

LICENCE L8148/2006/4 CRUSHER UPGRADE AUDIT REPORT

KOOLAN IRON ORE PTY LTD

Date: 22 APRIL 2022

Revision 0



Corporate Endorsement:

Document Title: Koolan Iron Ore Mine and Port Facility – Licence 8148/2006/41: Crusher Upgrade Audit Report

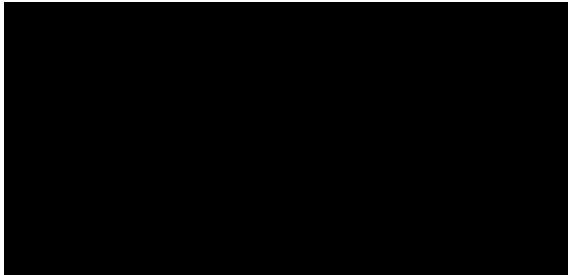
Revision: 0

Date:

Signed:

Name:

Position:



Koolan Iron Ore Pty Ltd

CONTENTS

1	INTRODUCTION.....	3
1.1	<i>Project Overview.....</i>	<i>3</i>
1.2	<i>Licence (L8148/2006/4).....</i>	<i>3</i>
1.3	<i>Purpose of this Document.....</i>	<i>3</i>
1.4	<i>Scope of Document.....</i>	<i>3</i>
2	COMPLIANCE AUDIT.....	5
2.1	<i>Layout of the crushing and screening plant.....</i>	<i>5</i>
2.2	<i>Installation of the crushing and screening plant.....</i>	<i>10</i>

List of Figures

Figure 1:	Crushing and screening plant location relative to KIO.....	4
Figure 2:	Crushing and screening plant layout – as-built.....	6
Figure 3:	New primary crusher.....	7
Figure 4:	Secondary crusher.....	7
Figure 5:	Screening Plant.....	8
Figure 6:	ROM drain.....	8
Figure 7:	Sump (northern).....	9
Figure 8:	Sump (southern).....	9

List of Tables

Table 1:	Compliance summary.....	5
----------	-------------------------	---

List of Appendices

Appendix 1:	Construction Drawing – As Built.....	12
-------------	--------------------------------------	----

1 Introduction

1.1 Project Overview

The Koolan Iron Ore Mine and Port Facility is situated on Koolan Island off Western Australia's Kimberley coast within the Buccaneer Archipelago. The majority of Koolan Island is subject to mining tenements held by Koolan Iron Ore Pty Ltd (KIO). The mine site is in a remote and isolated part of the Shire of Derby-West Kimberley, with the closest town being Derby approximately 130 km south-southwest.

Iron ore and waste rock within Main Pit is blasted, excavated and loaded onto haul trucks and transported to either a designated waste rock landform (WRL) or the Run-of-Mine (ROM) pad. Ore from the ROM is loaded by front-end loaders into a two-stage rushing and screening plant to produce up to 5 million tonnes of ore per annum.

Once the ore has been processed it is stored either as lump or fines product stockpiles in the stockyard area. The material is then fed by front-end loaders into mobile reclaim hoppers onto conveyor belts for transport to the ship-loading facility at the port.

1.2 Licence (L8148/2006/4)

On 13 October 2021, DWER amended L8148/2006/4 to enable an increase in category 5 throughput via refurbishment of the crushing and screening plant. All infrastructure must be constructed in accordance with the design and construction /installation requirements as per Table 1.2.1 of L8148/2006/4.

The location of the crushing and screening plant within the broader Koolan Iron operation is shown in Figure 1.

1.3 Purpose of this Document

Condition 1.2.3 of L8148/2006/4 requires KIO to: (a) undertake an audit of its compliance with the requirements of condition 1.2.2 of the licence; and (b) prepare and submit to the CEO an audit report on that compliance. The audit is required to be undertaken/submitted within 60 days of the crushing and screening plant being constructed.

1.4 Scope of Document

This audit report assesses compliance of the refurbishment of the crushing and screening plant with the requirements of condition 1.2.2, specifically:

- Located on pad
- Stormwater drained to sumps in low points within operating area
- Refurbishment of screening plant, including new primary crusher to accommodate increased throughput of approx. 850 tonnes of material
- As per Schedule 1 Maps: Premises map

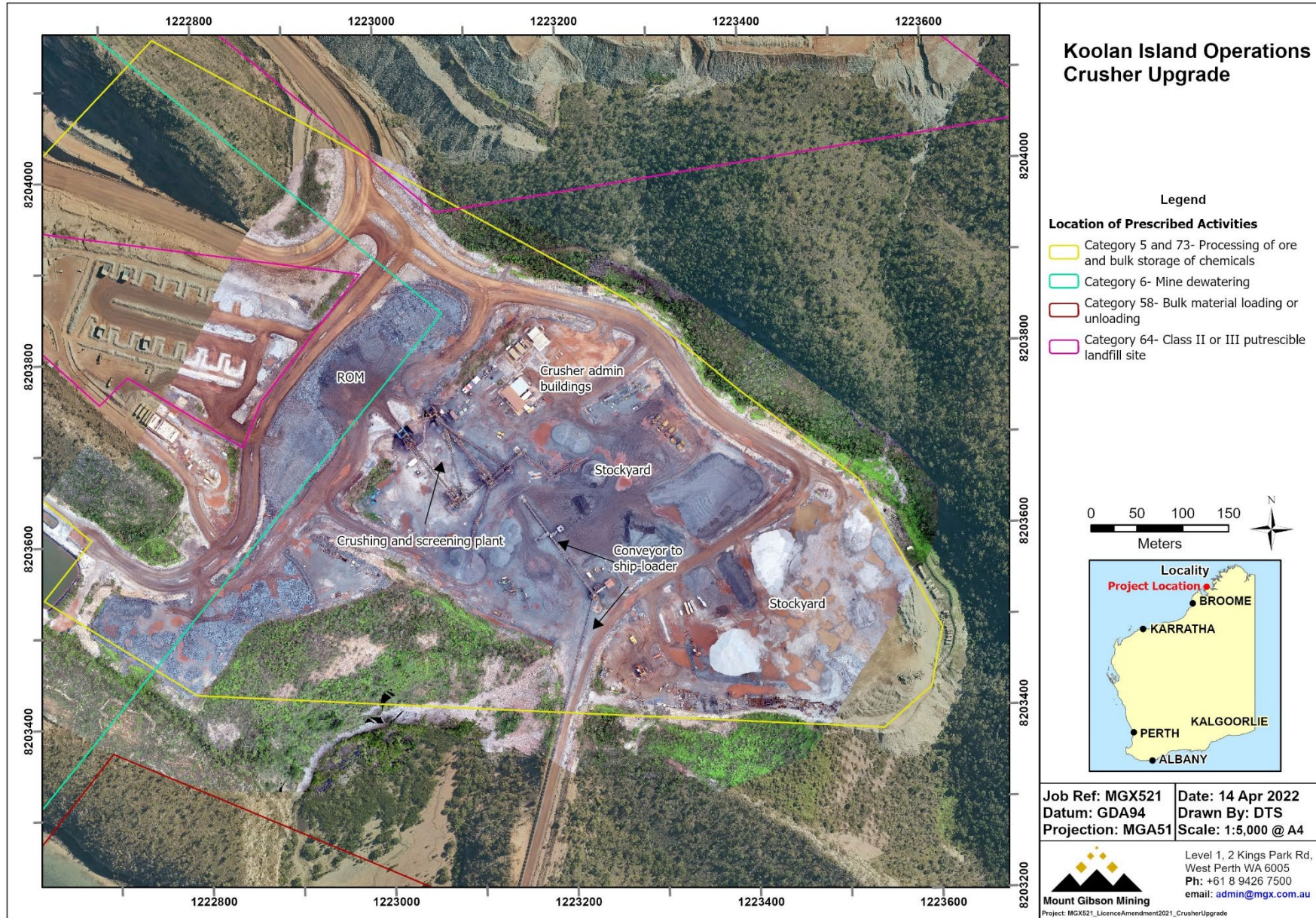


Figure 1: Crushing and screening plant location relative to KIO

2 Compliance Audit

Table 1 summarises compliance against the construction/installation requirements specified in Table 1.2.1 of L8148/2006/4. Additional detail is provided in the following sections.

Table 1: Compliance summary

	Infrastructure	Construction/installation requirements	Evidence of Compliance
1	Crushing and screening plant	<ul style="list-style-type: none"> Located on pad 	Refer Figure 1, Figure 2 and Appendix 1
		<ul style="list-style-type: none"> Stormwater drained to sumps in low points within operating area 	Refer Figure 6, Figure 7 and Figure 8.
		<ul style="list-style-type: none"> Refurbishment of screening plant, including new primary crusher to accommodate increased throughput of approx. 850 tonnes of material per hour. 	Refer Figure 3-Figure 5

2.1 Layout of the crushing and screening plant

The plant consists of a primary and secondary crushing circuit, product screening and lump and fines product stackers and associated stockpiles. The as-built layout of the crushing and screening plant as constructed is shown in Figure 2, with the key components shown individually in Figure 3 – Figure 5.

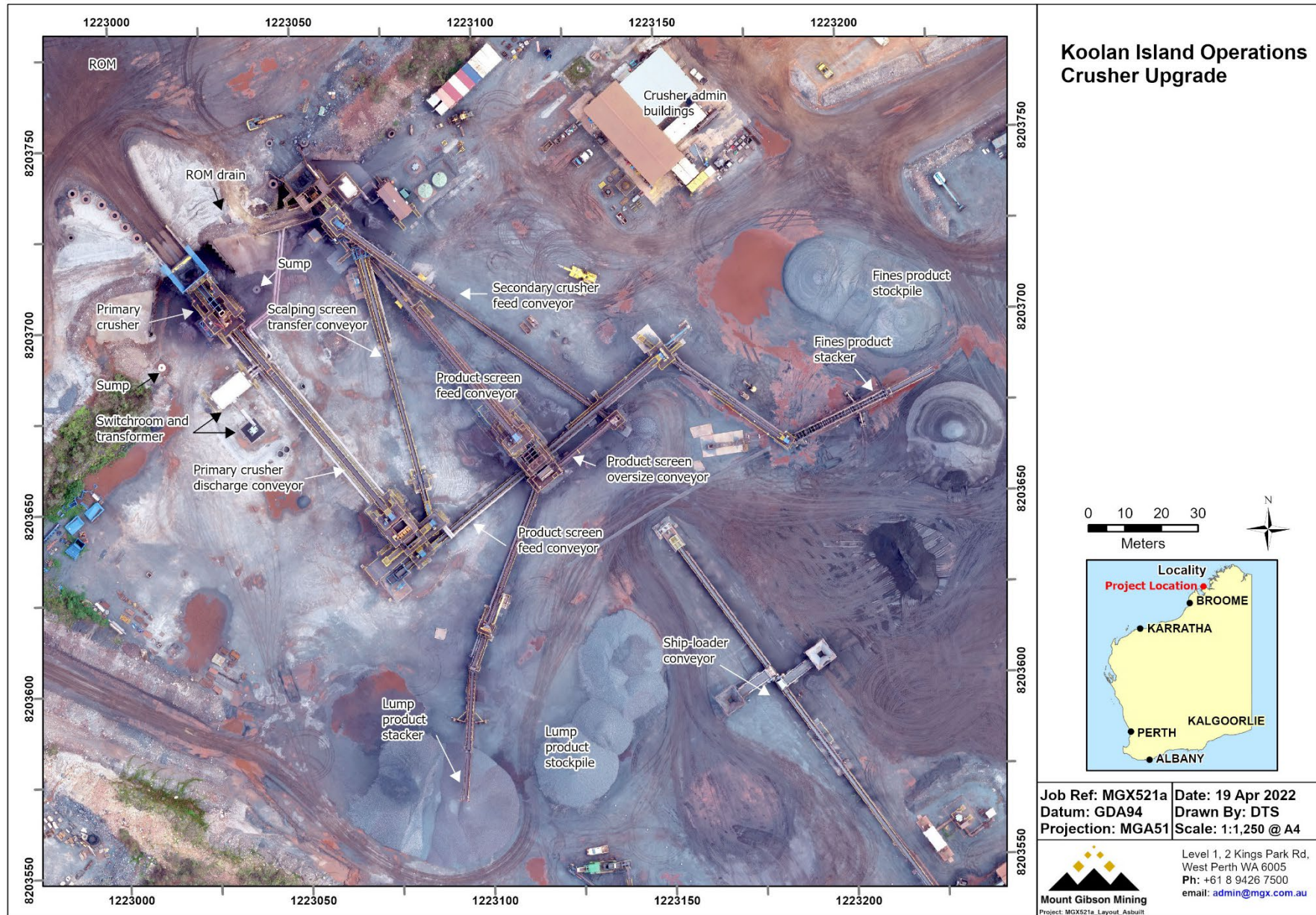


Figure 2: Crushing and screening plant layout – as-built



Figure 3: New primary crusher



Figure 4: Secondary crusher



Figure 5: Screening Plant



Figure 6: ROM drain



Figure 7: Sump (northern)



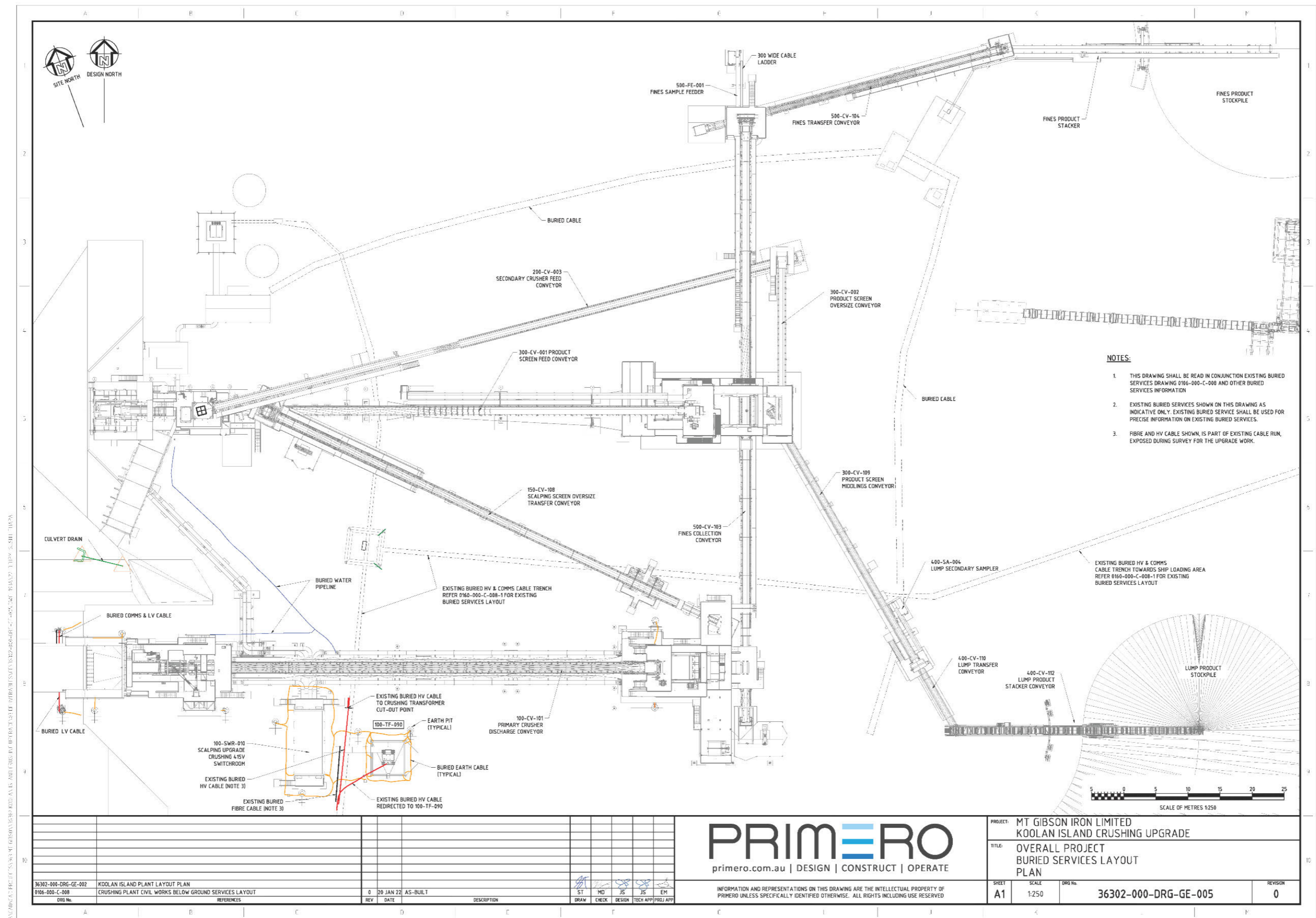
Figure 8: Sump (southern)

2.2 Refurbishment of the crushing and screening plant

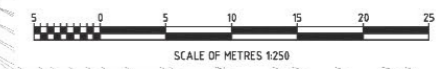
The crushing and screening plant was refurbished as per the manufacturer's requirements by Primero Group Limited, including installation of a new primary crusher.

APPENDICES

**Appendix 1:
Construction Drawing – As Built**



- NOTES:**
1. THIS DRAWING SHALL BE READ IN CONJUNCTION EXISTING BURIED SERVICES DRAWING 0106-000-C-008 AND OTHER BURIED SERVICES INFORMATION
 2. EXISTING BURIED SERVICES SHOWN ON THIS DRAWING AS INDICATIVE ONLY. EXISTING BURIED SERVICE SHALL BE USED FOR PRECISE INFORMATION ON EXISTING BURIED SERVICES.
 3. FIBRE AND HV CABLE SHOWN, IS PART OF EXISTING CABLE RUN, EXPOSED DURING SURVEY FOR THE UPGRADE WORK.



PRIMERO
 primero.com.au | DESIGN | CONSTRUCT | OPERATE

PROJECT: MT GIBSON IRON LIMITED
 KOOLAN ISLAND CRUSHING UPGRADE
 TITLE: OVERALL PROJECT
 BURIED SERVICES LAYOUT
 PLAN

SHEET	SCALE	DRG No.	REVISION
A1	1:250	36302-000-DRG-GE-005	0

36302-000-DRG-GE-002	KOOLAN ISLAND PLANT LAYOUT PLAN	0	20 JAN 22	AS-BUILT															
0106-000-C-008	CRUSHING PLANT CIVIL WORKS BELOW GROUND SERVICES LAYOUT																		
DRG No.	REFERENCES	REV	DATE	DESCRIPTION	DRAW	CHECK	DESIGN	TECH APP	PROJ APP										

36302-000-DRG-GE-002 (0106-000-C-008) - OVERALL PROJECT BURIED SERVICES LAYOUT PLAN - 20 JAN 2022