



# IRON VALLEY IRON ORE PROJECT

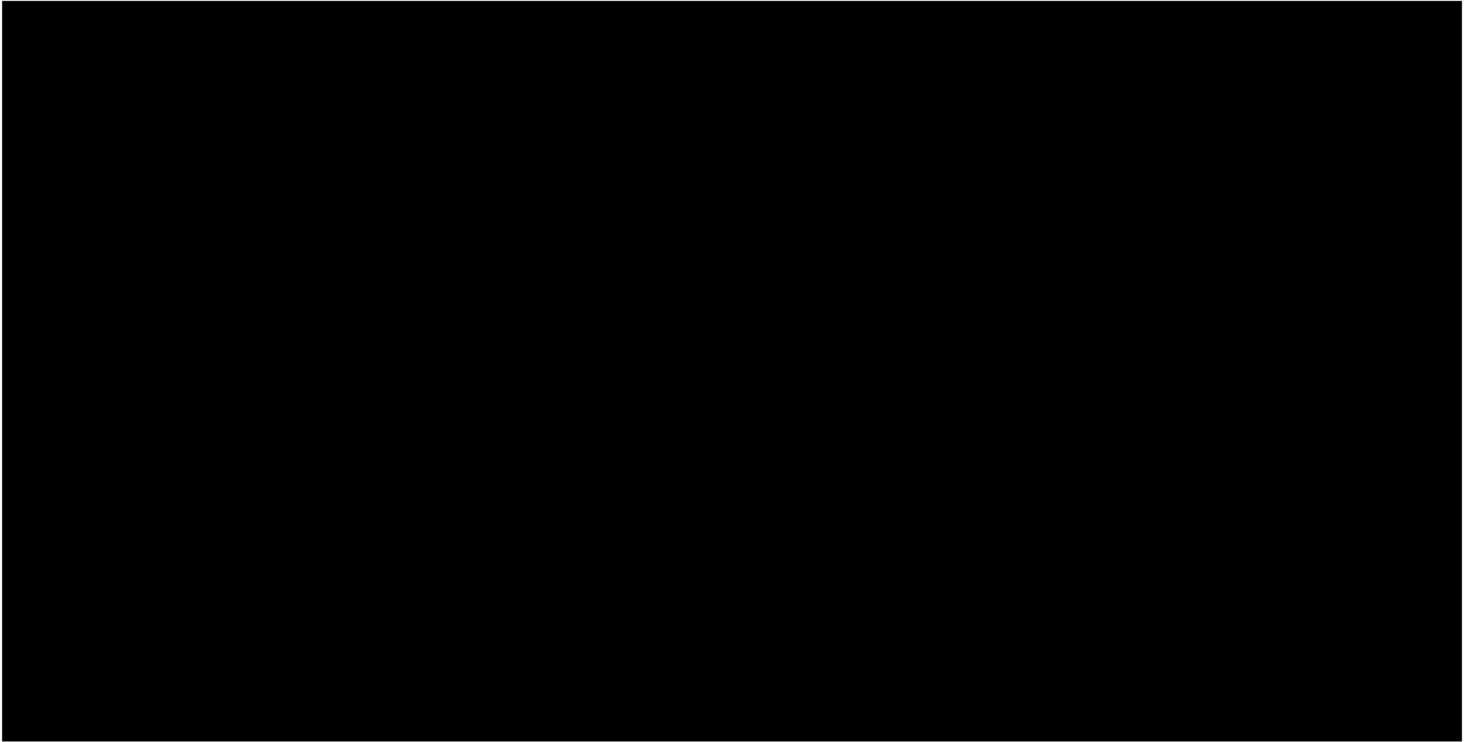
IRON VALLEY -  
L8859/2014/1 - ANNUAL  
ENVIRONMENTAL REPORT  
2026

**L8859/2014/1**

28/04/2026 VERSION 0



## DOCUMENT INFORMATION



### **Acknowledgement of Country**

MinRes is committed to reconciliation and recognises and respects the significance of Aboriginal and Torres Strait Islander peoples' communities, cultures, and histories. MinRes acknowledges and respects Aboriginal and Torres Strait Islander peoples as the traditional custodians of the land.

# TABLE OF CONTENTS

<b>1.</b>	<b>Introduction .....</b>	<b>1</b>
<b>2.</b>	<b>Licence Category Production Summary.....</b>	<b>4</b>
<b>3.</b>	<b>Point Source Emissions to Surface Water.....</b>	<b>5</b>
3.1	Analysis of Results.....	5
3.1.1	Groundwater Transfer – E1 Pit.....	5
3.1.2	Discharge Volumes to Weeli Wolli Creek.....	6
3.1.3	Discharge Surface Water Quality – DDL4 .....	6
<b>4.</b>	<b>Ambient Groundwater Monitoring.....</b>	<b>11</b>
4.1	Analysis of Results.....	12
4.1.1	Standing Water Level .....	12
4.1.2	Groundwater Quality .....	13
<b>5.</b>	<b>Waste Inputs and Outputs.....</b>	<b>16</b>
<b>6.</b>	<b>Compliance Summary .....</b>	<b>17</b>
6.1	Environmental Incidents.....	17
6.2	Complaints Summary .....	17
6.3	Annual Audit of Compliance .....	17

## Figures

Figure 1:	Iron Vally Project Regional Location Map .....	2
Figure 2:	L8859 Prescribed Premises Boundary Map .....	3
Figure 3:	DDL4 pH Sampling Data .....	8
Figure 4:	DDL4 Electrical Conductivity Sampling Data .....	8
Figure 5:	DDL4 Total Nitrogen Sampling Data.....	9
Figure 6:	DDL4 Total Nitrate (as NO <sub>3</sub> ) Sampling Data .....	9
Figure 7:	DDL4 Boron Sampling Data .....	10
Figure 8:	DDL4 Zinc Sampling Data .....	10
Figure 9:	Groundwater Monitoring Site Location Map .....	11
Figure 10:	Groundwater Monitoring - Field pH Sampling Data.....	14
Figure 11:	Groundwater Monitoring - Field EC Sampling Data.....	14
Figure 12:	Groundwater Monitoring - Boron Sampling Data.....	15

## Tables

Table 1:	L8859/2014/1 Environmental Reporting Requirements .....	1
Table 2:	Annual Period Category Production Rates .....	4
Table 3:	Monthly Groundwater Transfers to E1 Pit .....	5
Table 4:	Discharge Volumes.....	6
Table 5:	Groundwater Monitoring Site Standing Water Levels .....	12
Table 6:	Waste Input Volume Summary.....	16
Table 7:	Waste Output Volume Summary .....	16
Table 8:	Summary of Compliance Status Against Licence Conditions .....	18

## Appendices

**Appendix A Monitoring Results**

**Appendix B Iron Valley Annual Audit of Compliance Report 2026**

# 1. INTRODUCTION

The Iron Valley Iron Ore Project (the **Project**) operates under Prescribed Premise Licence L8859/2014/1 (referred herein as the **Licence**), which is administered by the Department of Water and Environmental Regulation (DWER) under Part V of the *Environmental Protection Act 1986* (EP Act).

The Licence currently includes Category 5 (Processing or beneficiation of metallic or non-metallic ore), Category 6 (Mine dewatering) and Category 89 (Putrescible landfill site), with details on Category production and design capacities provided in **Table 2**.

A regional location map for the Project is provided in **Figure 1**, with a Prescribed Premises Boundary map provided in **Figure 2**.

This Annual Environmental Report (**AER**) addresses Condition 4.2.1 of the Licence, which requires the submission of an annual environmental report to the CEO within 28 calendar days after the end of the Annual Period.

This AER submission is for the period **1 April 2025 to 31 March 2026** (referred herein as the **Annual Period**), with a summary of the Conditions addressed provided in **Table 1**.

**Table 1: L8859/2014/1 Environmental Reporting Requirements**

Condition	Requirement	AER Reference
-	Summary of any failure or malfunction of any pollution control equipment and any environmental incidents that have occurred during the annual period and any action taken.	<b>Section 6</b>
Condition 1.2.9 (Table 1.2.4)	Production or design capacity limits	<b>Section 2</b>
Condition 2.2.1 (Table 2.2.1)	DDL4b – provide dates (month) and volume of groundwater transferred to the E1 Pit transfer point	<b>Section 3</b>
Condition 3.2.1 (Table 3.2.1)	Cumulative volume discharged via each separate surface water emission point	<b>Section 3</b>
	Monitoring of point source emissions to surface water and a comparison against ANZECC/ARMCANZ 2018 Australian and New Zealand Guidelines for Fresh and Marine Water Quality, trigger values for freshwater, 95% level of protection and previous collected monitoring results	<b>Section 3 Appendix A</b>
Condition 3.3.1 (Table 3.3.1)	Summary of inputs and outputs	<b>Section 5</b>
Condition 3.4.1 (Table 3.4.1)	Monitoring of ambient groundwater quality and a comparison against ANZG 2018 Australian and New Zealand Guidelines for Fresh and Marine Water Quality, trigger values for freshwater, 95% level of protection	<b>Section 4 Appendix A</b>
Condition 4.1.2	Compliance against the Licence conditions	<b>Section 6 Appendix B</b>
Condition 4.1.3	Complaints summary	<b>Section 6</b>
Condition 4.2.2	The Licence Holder shall ensure that the Annual Environmental Report also contains an assessment of the information contained within the report against previous monitoring results and Licence limits.	<b>Sections 3, 4, 5</b>

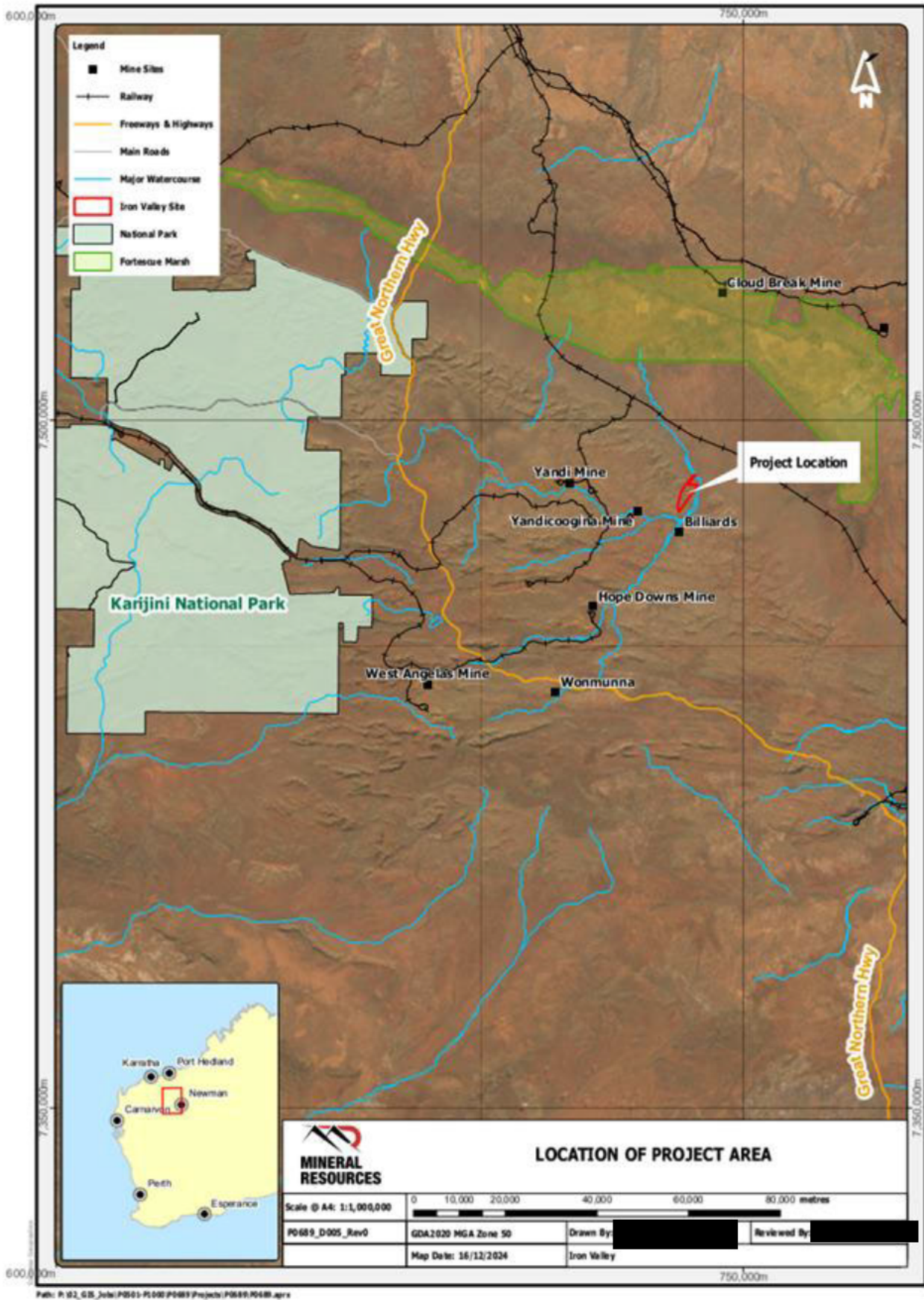


Figure 1: Iron Vally Project Regional Location Map

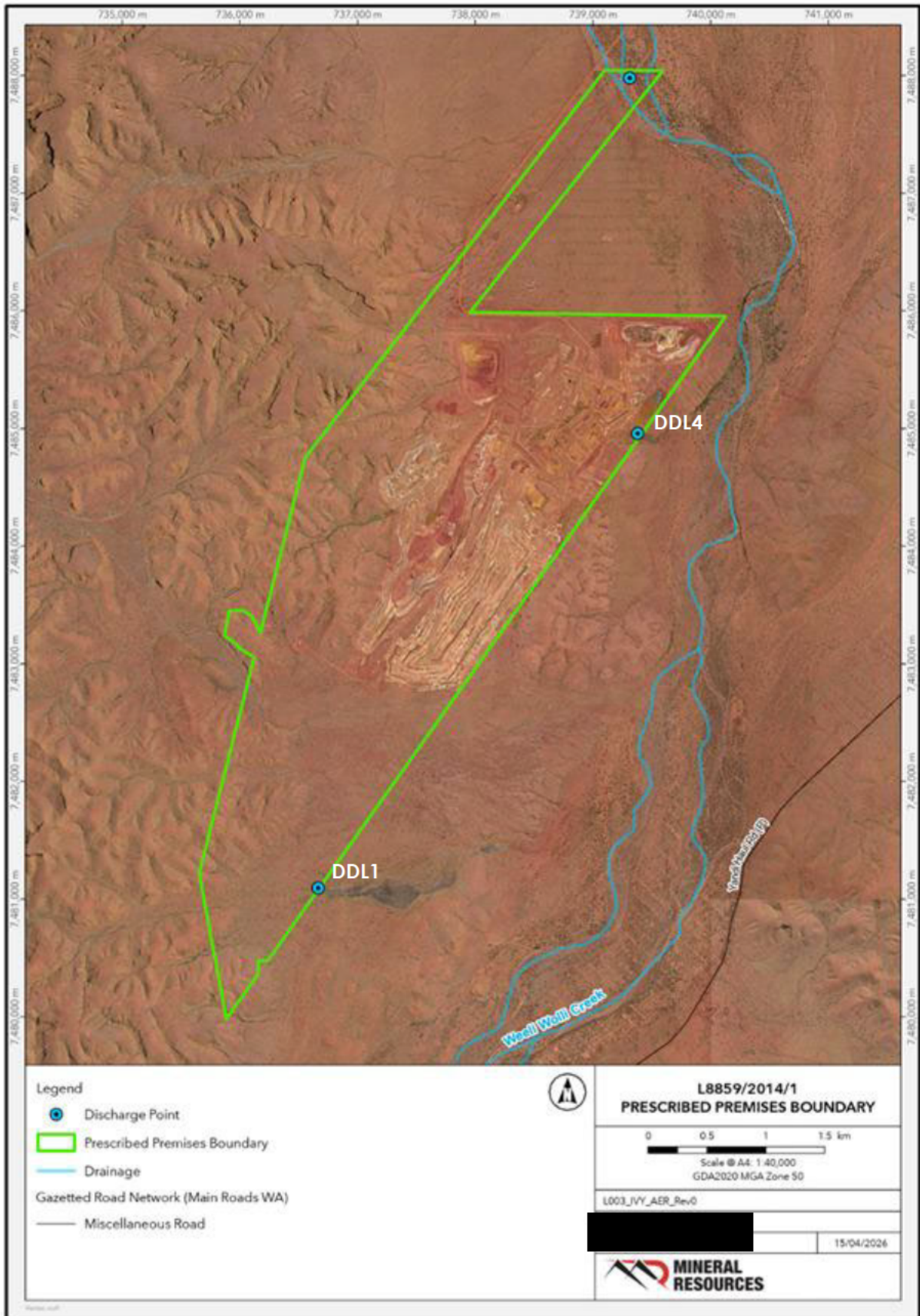


Figure 2: L8859 Prescribed Premises Boundary Map

## 2. LICENCE CATEGORY PRODUCTION SUMMARY

Condition 1.2.9 of the Licence requires that production limits specified in Table 1.2.4 of the Licence are not exceeded, with a summary of annual production rates for the Annual Period provided in **Table 2**. In addition, a comparison of results with the previous 2024-2025 annual period is provided.

**Table 2: Annual Period Category Production Rates**

Category ID	Description	Approved Capacity	Output		
			2024-2025	2025-2026	Variation
5	Processing or beneficiation of metallic or non-metallic ore	10 million tonnes/ annum	2,459,327	5,740,461	+3,281,134
6	Mine dewatering	42 million tonnes/ annum	13,818,363	12,792,557	-1,025,806
89	Putrescible landfill site	1,500 tonnes/ annum	437.24	824.16	+386.92

Notable observations during the Annual Period include:

- Processing output increased by a total of 3,281,134 tonnes for the Annual Period, due to altered operational requirements and reliance on ore shipped to port from the Project to meet business supply demands.
- Mine dewatering volumes were reduced by 1,025,820 tonnes over the Annual Period, which is attributed to operational requirements and completion of mining in the Central Pit. With reduced pressure on the need to dewater the Central pit, the volume discharged was reduced. During this phase, there was a focus to develop alternative pits that provided dry ore mining and an associated dewatering network for the newly developing pits.
- Putrescible waste to on-site landfill (includes on-site and off-site disposal) increased by 386.92 tonnes, with further information provided in **Section 5**.

### 3. POINT SOURCE EMISSIONS TO SURFACE WATER

In accordance with Condition 3.2.1 (Table 3.2.1) of the Licence, the following sub-sections provide a summary of surface monitoring activities undertaken during the Annual Period.

A location map of the Project's surface water discharge points is provided in **Figure 2**, with specific reference to site locations DDL1 and DDL4.

#### 3.1 ANALYSIS OF RESULTS

##### 3.1.1 Groundwater Transfer – E1 Pit

In accordance with Condition 2.2.1 (Table 2.2.1) of the Licence, a summary of monthly volumes of in-pit mine dewater transferred to the Project's E1 Pit is provided in **Table 3**, with a comparison of results with the previous annual period also provided.

**Table 3: Monthly Groundwater Transfers to E1 Pit**

Annual Period	2024-2025	2025-2026	Variation
Month	Volume (kL)	Volume (kL)	
April	1,278,344	1,480,418	202,074
May	810,313	1,317,984	507,671
June	91,575	1,444,520	1,352,945
July	941,678	1,517,727	576,049
August	662,851	1,535,044	872,193
September	1,102,032	1,800,904	698,872
October	899,325	1,065,545	166,220
November	797,047	1,696,391	899,344
December	709,611	1,484,939	775,328
January	1,449,068	1,543,633	94,565
February	1,146,131	1,468,054	321,923
March	522,976	1,875,884	1,352,908
<b>TOTAL</b>	<b>10,410,951</b>	<b>18,231,043</b>	<b>7,820,092</b>

The Project's mine dewatering water circuit involves the following discharge streams:

- 'Dirty' (sediment laden) mine dewater generated from in-pit sumps and mine development is transferred to the the E1 Pit, before being transferred for offsite discharge via DDL4b.
- 'Clean' mine dewater abstracted from the Project's operational dewatering bores is transferred directly to DDL1 and DDL4a for offsite discharge.

Notable observations during the Annual Period include:

- A monthly average volume of 1,519,254 kL was transferred to the Project's E1 pit.
- The total volume of mine-dewater discharged to the Project's E1 Pit during the Annual Period increased by a total of 7,820,092 kL, compared to the previous annual period.
- The increase in discharge volume was attributed to the development of the Project's E2 and E3 pits, and requirement to transfer all Project 'dirty' mine-dewater to the E1 Pit prior to discharge offsite via the DDL4b discharge point.

### 3.1.2 Discharge Volumes to Weeli Wolli Creek

In accordance with Condition 3.2.1 (Table 3.2.1), a summary of discharge volumes from the Project's licenced surface water discharge points to Weeli Wolli Creek is provided in **Table 4**.

**Table 4: Discharge Volumes**

Date	DDL1		DDL4a		DDL4b	
	2024-2025 (kL)	2025-2026 (kL)	2024-2025 (kL)	2025-2026 (kL)	2024-2025 (kL)	2025-2026 (kL)
April	120,378	0.00	95,445	846,492	151,550	79,617
May	131,871	0.00	57,762	1,283,400	101,530	96,708
June	0.00	0.00	84,759	280,740	0.00	100,874
July	0.00	0.00	97,712	88,536	68,950	73,437
August	0.00	0.00	123,309	88,536	277,210	81,366
September	0.00	0.00	112,827	721,186	345,280	346,861
October	0.00	0.00	74,277	440,869	453,500	688,081
November	0.00	0.00	95,046	658,955	264,150	868,087
December	0.00	0.00	86,760	828,988	462,700	854,061
January	0.00	0.00	77,865	809,505	381,520	763,880
February	0.00	113,908	84,843	720,707	509,237	546,602
March	0.00	422,490	50,071	906,866	351,434	81,805
<b>TOTAL</b>	<b>252,249</b>	<b>536,398</b>	<b>1,040,676</b>	<b>7,674,780</b>	<b>3,367,061</b>	<b>4,581,379</b>

Notable observations during the Annual Period include:

- The Project DDL5 discharge location was not constructed during the Annual Period.
- Discharge from DDL1 was paused in June 2024 due to operational requirements, with the discharge point recommissioned in February 2026.
- A total volume of 12,792,557 kL of mine-dewater was discharged offsite during the Annual Period, an increase of 8,132,571 kL from the previous annual period. The increase is attributed to developing a dewatering borefield for North and East pits (E2 and E3 pits).

### 3.1.3 Discharge Surface Water Quality – DDL4

Condition 3.2.1 (Table 3.2.1) of the Licence requires monthly water quality monitoring of the Project's cumulative discharge point location (DDL4) when discharging, with a summary of results provided in **Appendix A**.

Notable observations for the Annual Period include:

- Monthly water quality samples were taken from DDL4 for each month of discharging (**Appendix A**).
- Overall, results indicate the discharge water quality from DDL4 to be comparable to the previous annual period.

In regard to a comparison against the 2018 Australian and New Zealand Guidelines for Fresh and Marine Water Quality (**ANZG 2018**) values for freshwater (95% level of protection), the following was noted:

- pH concentrations were within the ANZG 2018 value range (6.0 – 8.0 pH units), with a maximum pH concentration of 8.0 pH recorded in May 2025 and March 2026 (**Figure 3**). The average concentration for the Annual Period was 7.4 pH compared to 7.9 pH recorded for the previous annual period:
  - Average concentration results within the ANZG 2018 range of 6.0 – 8.0 pH units.
- Electrical Conductivity (EC) concentrations show a number of results above the ANZG 2018 value range (250 – 900  $\mu\text{s/cm}$ ), with a maximum concentration of 950  $\mu\text{s/cm}$  recorded in February 2026 (**Figure 4**). The average concentration recorded for the Annual Period was 838.5  $\mu\text{s/cm}$ , compared to 896.4  $\mu\text{s/cm}$  recorded for the previous annual period.
  - Average concentration results within the ANZG 2018 range of 250 – 900  $\mu\text{s/cm}$ .
- Total Nitrogen (TN) concentrations show all results above the ANZG 2018 value (0.3 mg/L), with a maximum TN concentration of 3.2 mg/L recorded in May 2025 (**Figure 5**). The average concentration for the Annual Period was 1.34 mg/L, compared to 0.41 mg/L recorded for the previous annual period, with both periods recording results above the ANZG 2018 value.
  - The MinRes Subject Matter Expert (SME) will be engaged during the current annual period to assess potential contributing factors for the results.
- Total Nitrate (as  $\text{NO}_3$ ) concentrations show one (1) result above the ANZG 2018 value (11 mg/L), with a maximum TN concentration of 12.0 mg/L recorded in April 2025 (**Figure 6**). The average concentration for the Annual Period was 5.24 mg/L, compared to 0.92 mg/L recorded for the previous annual period.
  - Average concentration results below the ANZG 2018 value 11 mg/L.
- Total Phosphorous (TP) concentrations showed values were below the laboratory detection limit of 0.05 mg/L, with the ANZG 2018 value being 0.01 mg/L.
  - MinRes will engage with the monitoring laboratory to determine if an analysis test is available to detect concentrations of 0.01 mg/L or greater.
- Boron (B) concentrations show one (1) result above the ANZG 2018 value (0.37 mg/L), with a maximum concentration of 0.38 mg/L recorded in June 2025 (**Figure 7**). The average concentration recorded for the Annual Period was 0.23 mg/L, compared to 0.27 mg/L recorded for the previous annual period.
  - Average concentration results below the ANZG 2018 value of 0.37 mg/L.
- Chromium (Cr) concentrations were below the laboratory detection limit of 0.001 mg/L, with the ANZG 2018 value being 0.0001 mg/L.
  - MinRes will engage with the monitoring laboratory to determine if an analysis test is available to detect concentrations of 0.0001 mg/L or greater.
- Copper (Cu) concentrations show one (1) result above the ANZG 2018 value (0.0014 mg/L), recording a value of 0.0016 mg/L in February 2026. All other results were below the laboratory detection limit of 0.0005 mg/L.
- Iron (Fe) concentrations recorded show Nil results above the ANZG 2018 value (0.3 mg/L), with a maximum concentration of 0.014 mg/L recorded in June 2025. All other results were below the laboratory detection limit of 0.01 mg/L.
- Manganese (Mn) concentrations show Nil results above the ANZG 2018 value (1.90 mg/L), with a maximum concentration of 0.019 mg/L recorded in June 2025. Excluding results below the laboratory detection limit of 0.001 mg/L, the average concentration recorded for the Annual Period was 0.0047 mg/L, compared to 0.0091 mg/L recorded for the previous annual period.
- Zinc (Zn) concentrations show one (1) result above the ANZG 2018 value (0.008 mg/L), with a maximum concentration of 0.0099 mg/L recorded in October 2025 (**Figure 8**). The average concentration recorded for the Annual Period was 0.0025 mg/L, compared to 0.0040 mg/L recorded for the previous annual period.

- Average concentration results below the ANZG 2018 value of 0.008 mg/L.
- All remaining parameters recorded concentrations below their respective level of detection limits: Aluminium (Al), Cadmium (Cd), Mercury (Hg), Nickel (Ni), Lead (Pb), Selenium (Se) and Total Recoverable Hydrocarbon (TRH).

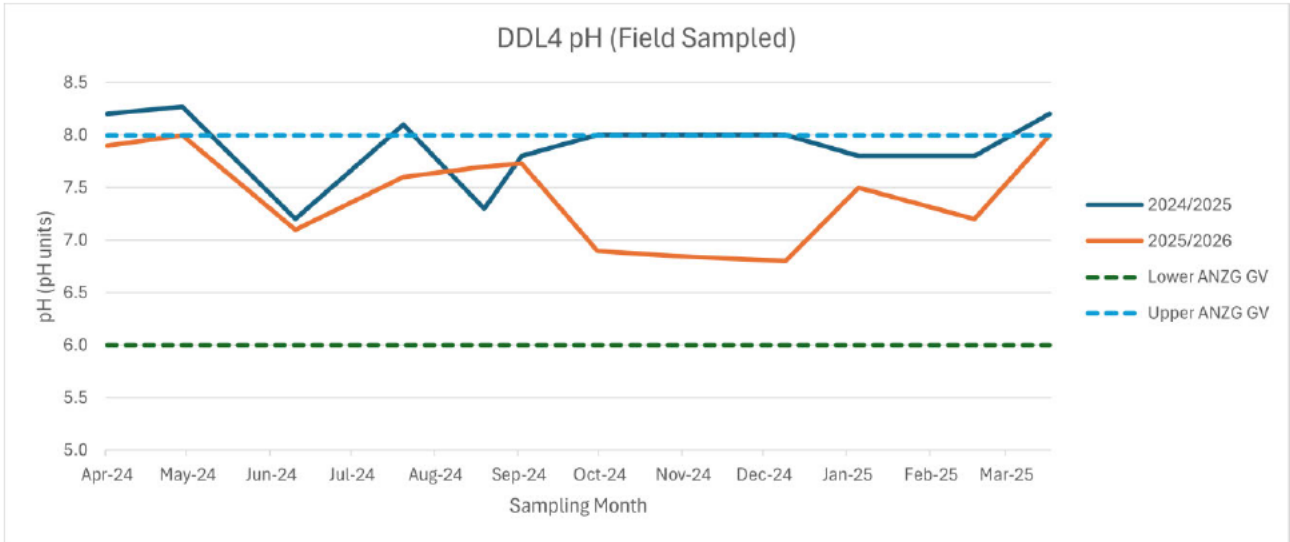


Figure 3: DDL4 pH Sampling Data

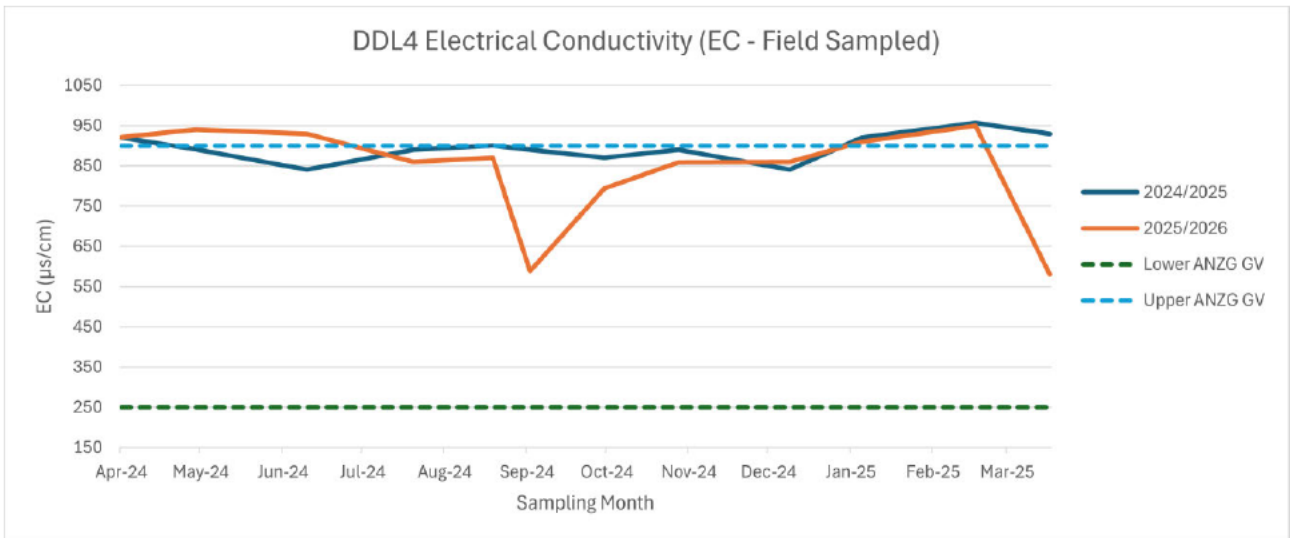


Figure 4: DDL4 Electrical Conductivity Sampling Data

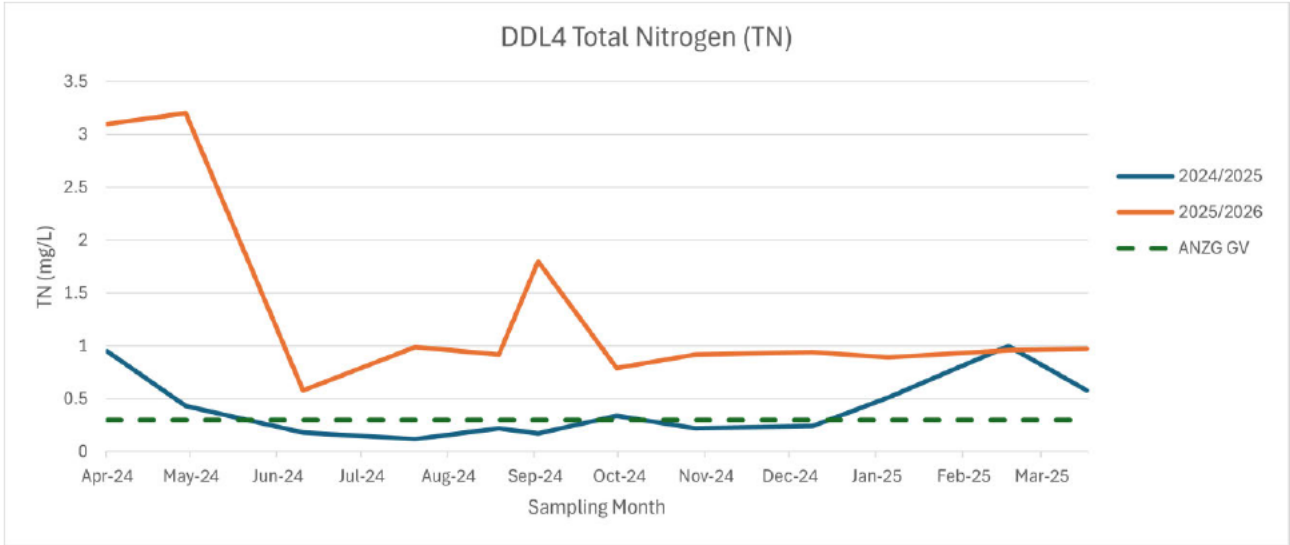


Figure 5: DDL4 Total Nitrogen Sampling Data

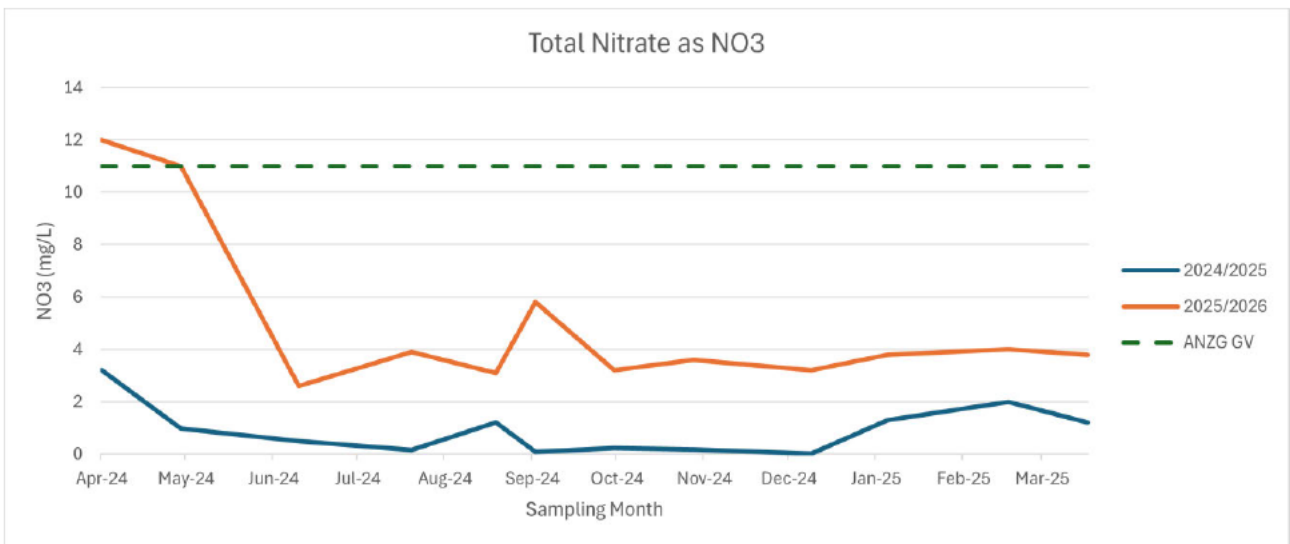


Figure 6: DDL4 Total Nitrate (as NO<sub>3</sub>) Sampling Data

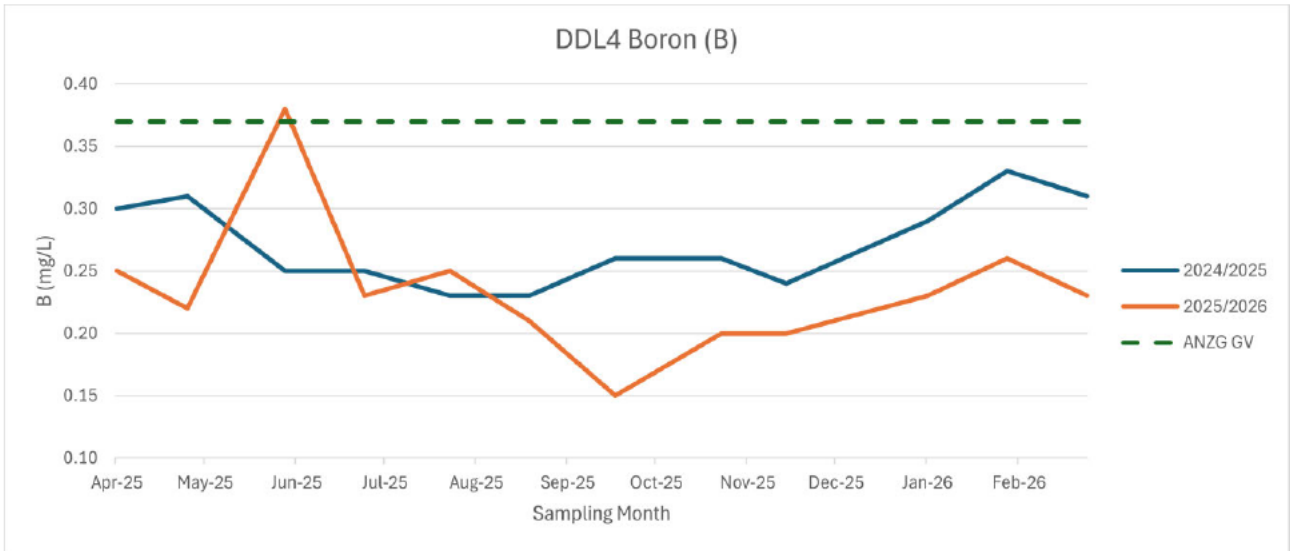


Figure 7: DDL4 Boron Sampling Data

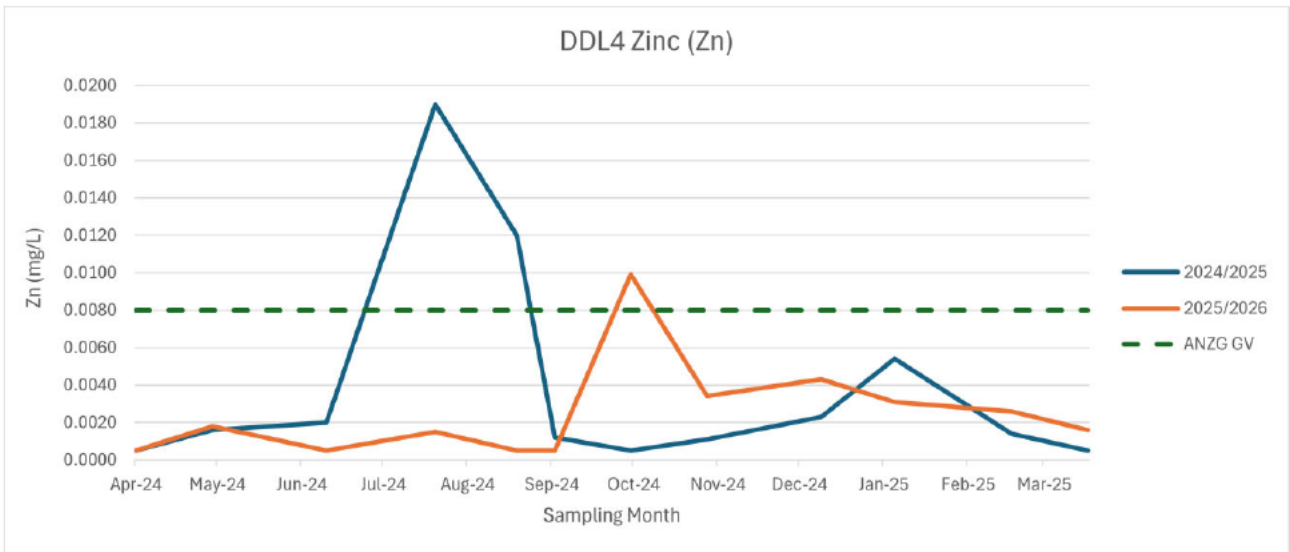


Figure 8: DDL4 Zinc Sampling Data

## 4. AMBIENT GROUNDWATER MONITORING

In accordance with Condition 3.4.1 (Table 3.4.1) of the Licence, a summary of groundwater monitoring results for the Annual Period is provided in **Section 4.1**. A location map of the Project's groundwater monitoring sites is provided in **Figure 9**.

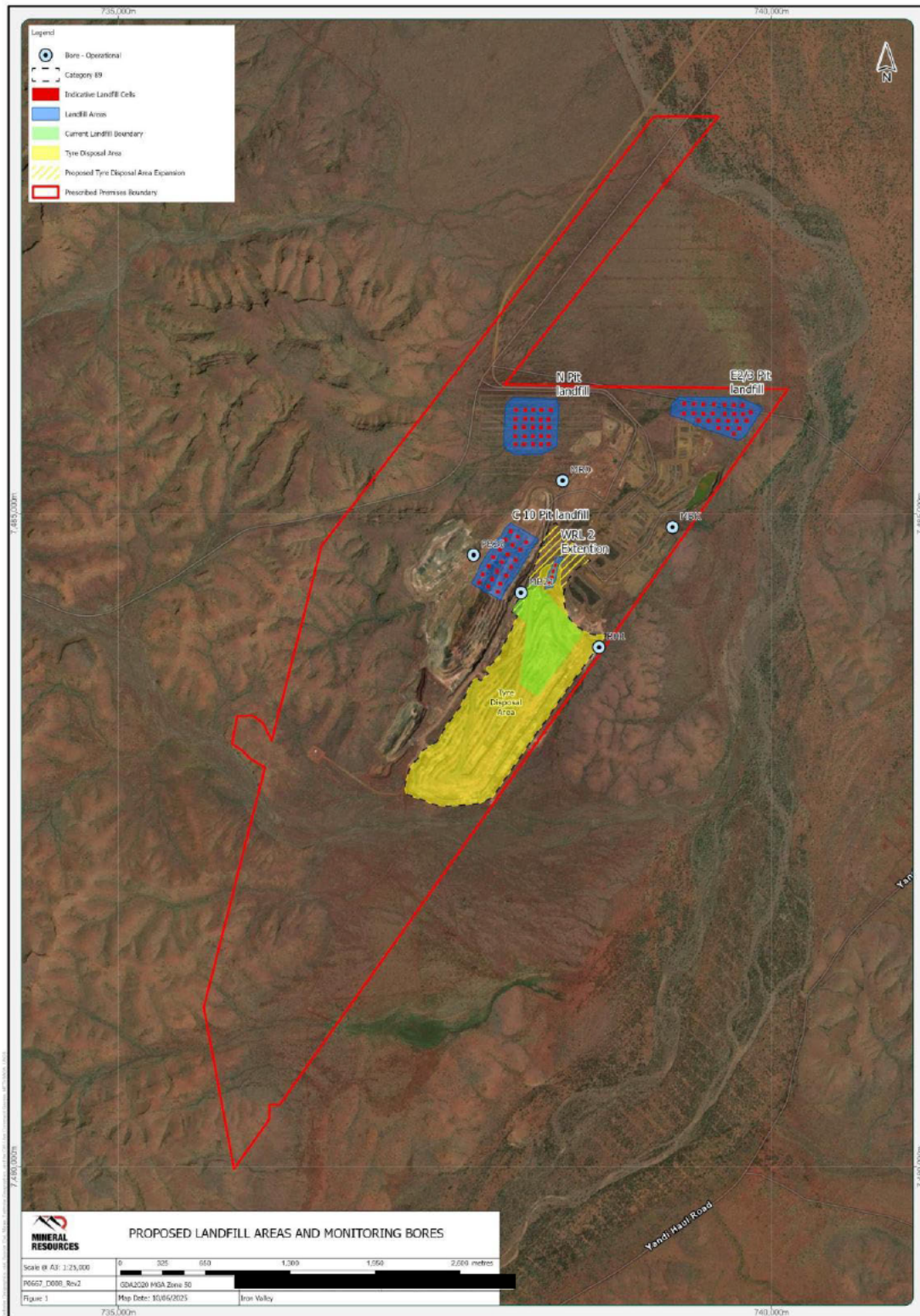


Figure 9: Groundwater Monitoring Site Location Map

## 4.1 ANALYSIS OF RESULTS

### 4.1.1 Standing Water Level

**Table 5** below provides a summary of six (6) monthly of standing water level (SWL) results for groundwater monitoring locations listed in Table 3.4.1 of the Licence.

**Table 5: Groundwater Monitoring Site Standing Water Levels**

Site ID	Sep-24	Mar-25	Sep-25	Mar-26
	mbgl	mbgl	mbgl	mbgl
PB25 <sup>1</sup>	-	-	95.41	121.65
BH1	36.29	<sup>2</sup>	36.91	38.33
MB21	82.61	<sup>3</sup>	<sup>3</sup>	<sup>3</sup>
MB26	99.27	98.01	93.82	<sup>4</sup>
MBD	80.14	77.15	73.92	69.69
MBK	27.96	27.56	28.50	28.66

Notable observations during the Annual Period include:

- Six monthly sampling was not achieved for the Licence monitoring sites due to:
  - PB25 – first sampling event was September 2025 (replace PB22) in the June 2025 Licence amendment, approved 13 June 2025)
  - BH1 – bore blockage did not allow for SWL to be measured in March 2025
  - MB21- decommissioned and not sampled during the Annual Period due to geotechnical issues preventing safe access to the location. To maintain an adequate understanding of groundwater characteristics in proximity to the decommissioned MB21 site, MB26 is now utilised for obtaining representative ground water data in this area, as it is located approximately 105 m southwest of MB21. The next Licence amendment application will update Condition 3.4.1 to remove MB21 and replace with MB26.
  - MB26 - access restriction prevented SWL reading to be measured in March 2026. Sampling to be completed in April 2026.
- With the exception of PB25, SWLs generally remained stable when comparing the respective annual periods.
- MBK - recorded the nearest to surface SWL of 27.56 mbgl (March 2025).
- MBD - Observations in MBD of receding groundwater level is consistent with active pit dewatering of the newly developed North Pit which is operating immediately to the north of the bore location and likely a direct influence on the water levels observed.

<sup>1</sup> PB22 decommissioned and replaced by PB25 in the June 2025 Licence amendment (approved 13 June 2025)

<sup>2</sup> Unable to record SWL due to bore blockage

<sup>3</sup> Monitoring bore decommissioned due to geotechnical issues and replaced with MB26

<sup>4</sup> Access restriction prevented reading occurring in March 2026

## 4.1.2 Groundwater Quality

In accordance with Condition 3.4.1 (Table 3.4.1) of the Licence, a summary of ambient groundwater water quality monitoring data recorded for the Annual Period is provided in **Appendix A**, which includes results from the previous annual period.

Notable observations for the Annual Period include:

- Overall, results recorded for the Annual Period indicate the groundwater quality from the bores monitored to be relatively homogenous and comparable to the previous annual period.
- Six monthly sampling was not achieved for the Licence monitoring sites due to:
  - PB25 – not sampled in March 2026 due to a blockage in the bore due to a pump lodged within the casing
  - BH1, MBD and MB26 - not sampled in March 2026 due to safe access restrictions. Sampling to be completed in April 2026.

In regard to a comparison against the **ANZG 2018** values, the following observations were noted:

- pH results within the ANZG 2018 value range (6.0 – 8.0 pH units), with a maximum pH concentration of 7.8 recorded in March 2026 from MBK (**Figure 10**). The average concentration for the Annual Period was 7.36 pH compared to 7.41 pH recorded for the previous annual period.
  - Average concentration results within the ANZG 2018 range of 6.0 – 8.0 pH units.
- Electrical Conductivity (EC) concentrations show a number of results above the ANZG 2018 value range (250 – 900  $\mu\text{s}/\text{cm}$ ), with a maximum concentration of 936  $\mu\text{s}/\text{cm}$  observed at MB26 in September 2025 (**Figure 11**). The average concentration recorded for the Annual Period was 829.98  $\mu\text{s}/\text{cm}$ , compared to 848  $\mu\text{s}/\text{cm}$  recorded for the previous annual period.
  - Average concentration results within the ANZG 2018 range of 250 – 900  $\mu\text{s}/\text{cm}$ .
- Boron (B) concentrations were below the ANZG 2018 value (0.37 mg/L), with a maximum concentration of 0.27 mg/L recorded in June 2025 (**Figure 12**). The average concentration recorded for the Annual Period was 0.18 mg/L, compared to 0.06 mg/L recorded for the previous annual period.
  - Average concentration results below the ANZG 2018 value of 0.37 mg/L.
- Iron (Fe) concentrations show Nil results above the ANZG 2018 value (0.3 mg/L), with a maximum concentration of 0.12 mg/L recorded at PB25 in September 2025.
- Selenium (Se) concentrations were below the ANZG 2018 value (0.011 mg/L), with a maximum concentration of 0.0019 mg/L recorded at BH01 in September 2025. All other results were below the laboratory detection limit of 0.001 mg/L.
- Zinc (Zn) concentrations show two (2) result above the ANZG 2018 value (0.008 mg/L), with a maximum concentration of 0.0086 mg/L recorded at MB26 in September 2025. The average concentration recorded for the Annual Period was 0.009 mg/L, compared to 0.0033 mg/L recorded for the previous annual period.
  - The MinRes Subject Matter Expert (SME) will be engaged during the current annual period to assess potential contributing factors for the results.
- All remaining parameters with respective ANZG 2018 values recorded concentrations below level of detection limits, including: Aluminium (Al), Cadmium (Cd), Mercury (Hg), Nickel (Ni), Lead (Pb) and Total Recoverable Hydrocarbon (TRH).

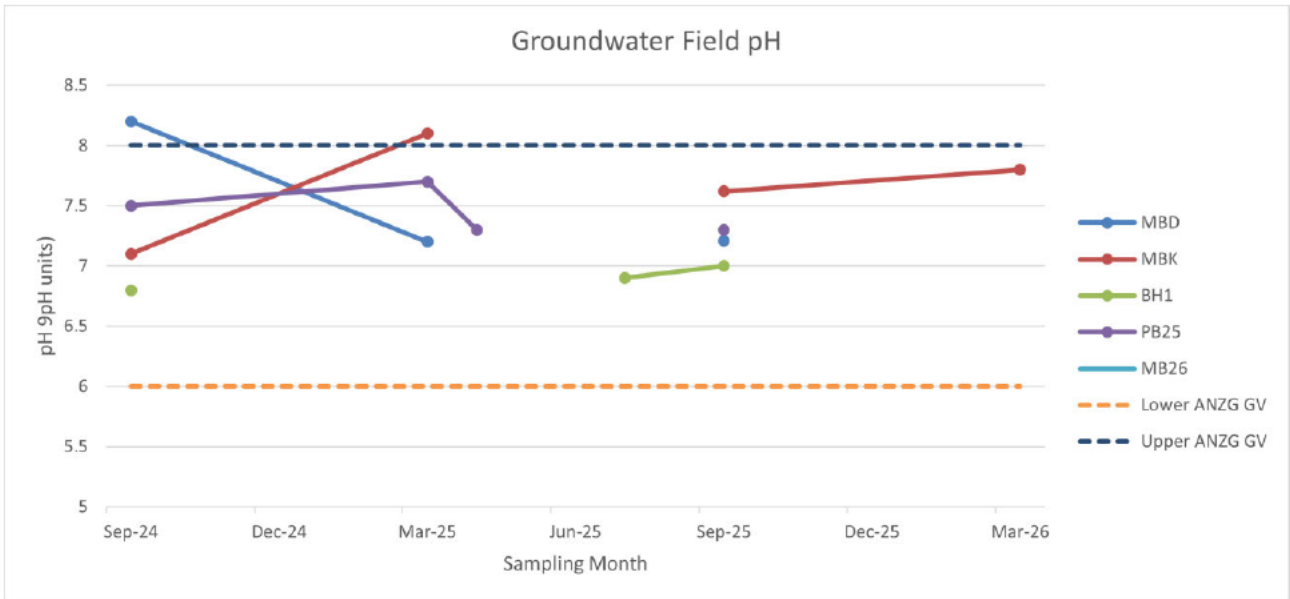


Figure 10: Groundwater Monitoring - Field pH Sampling Data

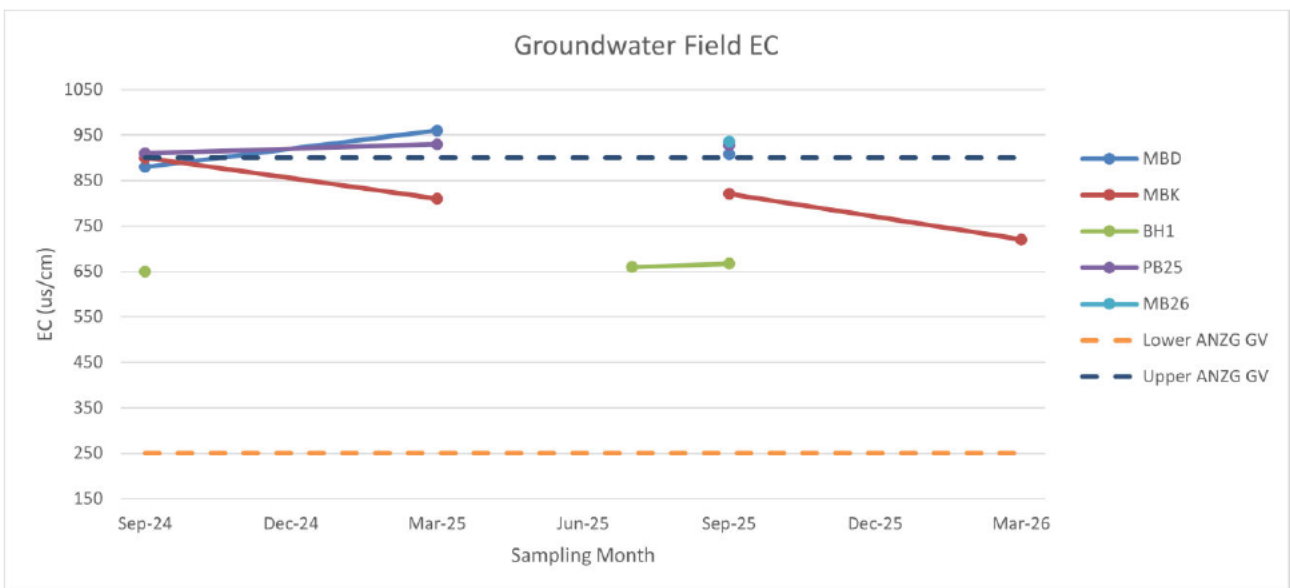


Figure 11: Groundwater Monitoring - Field EC Sampling Data

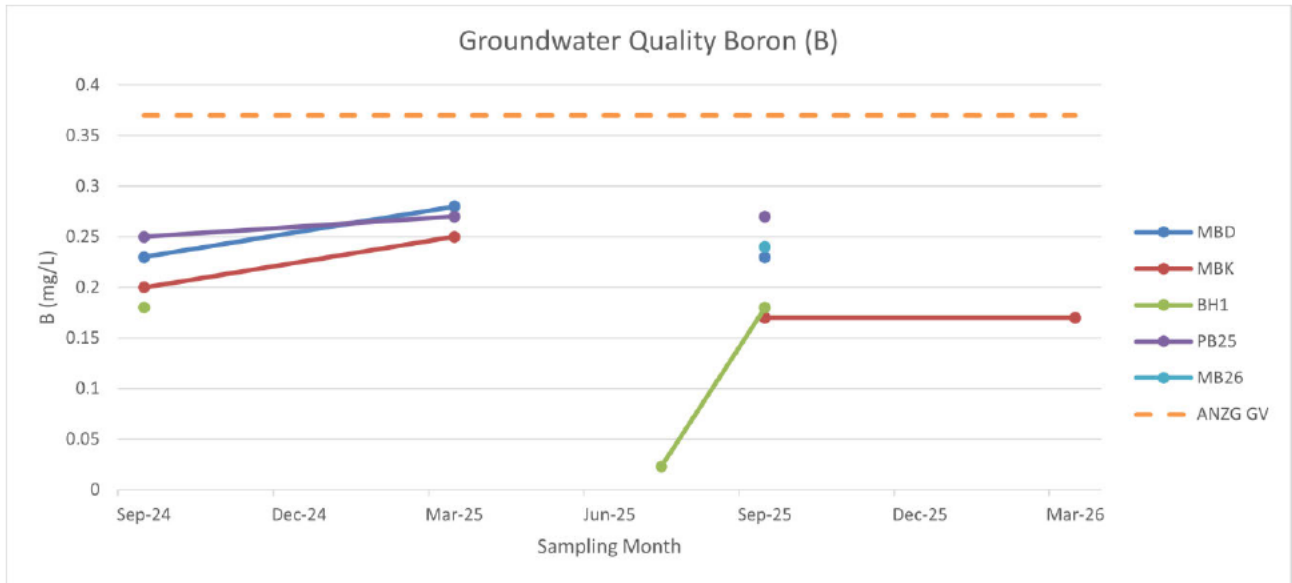


Figure 12: Groundwater Monitoring - Boron Sampling Data

## 5. WASTE INPUTS AND OUTPUTS

In accordance with Condition 3.3.1 (Table 3.3.1) of the Licence, a summary of waste inputs (waste received on-site for disposal) and waste output (waste transferred off-site for disposal/ rejected input waste) volumes for the Annual Period is provided in **Table 6** and **Table 7**, respectively.

**Table 6: Waste Input Volume Summary**

Waste Type	2024 - 2025	2025 - 2026	Variance
	Tonnes	Tonnes	Tonnes
Inert Waste Type 1	0.00	0.00	0.00
Putrescible Waste	378.00	440.10	+62.10
Clean Fill	0.00	0.00	0.00
Inert Waste Type 2 (plastics)	0.00	0.00	0.00
Special Waste Type 1	0.00	0.00	0.00
Inert Waste Type 2 (Rubber and tyres)	0.00	143.99	+143.99
<b>Total</b>	<b>378.00</b>	<b>584.09</b>	<b>206.09</b>

**Table 7: Waste Output Volume Summary**

Waste Type	2024 - 2025	2025 - 2026	Variance
	Tonnes	Tonnes	Tonnes
Inert Waste Type 1	72.31	0.00	-72.31
Putrescible Waste	59.27	225.79	+166.52
Clean Fill	0.00	0.00	0.00
Inert Waste Type 2 (plastics)	0.00	0.00	0.00
Special Waste Type 1	0.00	0.00	0.00
Inert Waste Type 2 (Rubber and tyres)	20.39	14.28	-6.11
<b>Total</b>	<b>151.97</b>	<b>240.07</b>	<b>88.10</b>

Notable observations during the Annual Period include:

- A total of 824.16 tonnes of waste was disposed to landfill, compared to with 529.97 tonnes disposed to landfill during the previous annual period.
- A total of 440.10 tonnes of putrescible waste was disposed on-site to landfill, which was an increase of 62.10 tonnes compared to the previous annual period.
- Rubber and tyre volumes decreased as the backlog of small tyres have been disposed of through off-site contractors and third-party licenced facilities. The amended 2025 Part V Licence also saw the endorsement of additional landfill locations on site and rubber is once again managed through onsite landfill.

## 6. COMPLIANCE SUMMARY

### 6.1 ENVIRONMENTAL INCIDENTS

Condition 4.2.1 (Table 4.2.1) of the Licence requires a summary of Limit exceedances and/ or incidents involving a failure or malfunction of pollution control equipment that has occurred during the Annual Period.

During the Annual Period, there were no failures and/or malfunction of pollution control equipment recorded.

### 6.2 COMPLAINTS SUMMARY

To meet Condition 4.1.3 of L8859/2014/1, a summary of complaints must be provided.

During the Annual Period, no complaints were received relating to alleged emissions from the premises.

### 6.3 ANNUAL AUDIT OF COMPLIANCE

In accordance with Condition 4.1.2 of the Licence, an Annual Audit Compliance Report (AACR) detailing the Project's compliance status against the respective conditions of the Licence is provided in **Appendix A**.

**Table 8** below provides a summary of variations to the Project's Licence conditions.

Table 8: Summary of Compliance Status Against Licence Conditions

Condition #	Description	Cause	Mitigation Actions
3.4.1	Six monthly water quality and SWL monitoring of the Project's mine dewatering bores was not achieved for PB25, BH1, MB21 and MB26.	<ul style="list-style-type: none"> <li>• MB21- decommissioned and not sampled during the Annual Period due to geotechnical issues preventing safe access to the location.</li> <li>• MB21 replaced by MB26 as it is located approximately 105 m southwest of MB21.</li> <li>• MB26 - access restriction prevented SWL reading to be measured in March 2026.</li> <li>• PB25 – replace PB22 in the June 2025 Licence amendment (approved 13 June 2025).</li> <li>• BH1 – access to bore restricted as the bore was covered by riling material.</li> </ul>	<ul style="list-style-type: none"> <li>• MB26 – amend Condition 3.4.1 of the Licence to remove MB21 and replace with MB26.</li> <li>• MB26 – March 2026 sampling to be completed in April 2026.</li> <li>• BH1 – access to bore reinstated in July 2025, with resample taken on 21 July 2025.</li> </ul>



**APPENDIX A**  
MONITORING RESULTS

# MONITORING RESULTS

A-1	Surface Water Quality Monitoring Results .....	1
A-2	Groundwater Quality Monitoring Results.....	3

A-1 SURFACE WATER QUALITY MONITORING RESULTS

ANZG 2018 95% Freshwater		6.0-8.0	250-900	-	-	-	-	-
Site ID	Date	Field pH	Field EC	Total Recoverable Hydrocarbons (TRH)	Total Dissolved Solids (TDS)	Total Suspended Solids (TSS)	Ionic Balance	Total Alkalinity as CaCO <sub>3</sub>
		pH units	us/cm	mg/L	mg/L	mg/L	mg/L	mg/L
DDL4 (2024-2025)	10/04/2024	8.20	920	<0.050	500	<5.0	-7.30	300
	8/05/2024	8.27	891	<0.050	500	<5.0	-11.00	300
	19/06/2024	7.20	840	<0.050	510	<5.0	0.02	320
	29/07/2024	8.10	890	<0.050	480	<5.0	-3.70	290
	28/08/2024	7.30	900	<0.050	530	<5.0	-13.00	320
	11/09/2024	7.80	890	<0.050	540	<5.0	-3.70	410
	9/10/2024	8.00	870	<0.050	490	<5.0	-5.10	300
	6/11/2024	8.00	890	<0.050	530	12.0	-2.80	270
	18/12/2024	8.00	840	<0.050	480	<5.0	-2.00	280
	14/01/2025	7.80	920	<0.050	540	<5.0	4.20	290
	26/02/2025	7.80	956	<0.050	560	<5.0	-1.10	290
	26/03/2025	8.20	930	<0.050	510	<5.0	-6.90	310
DDL4 (2025-2026)	28/04/2025	7.90	921	<0.050	550	5.5	-1.30	270
	22/05/2025	8.00	940	<0.050	-	-	-2.30	260
	24/06/2025	7.10	930	<0.050	510	11.0	-5.60	250
	21/07/2025	7.60	860	<0.050	500	6.5	-1.90	290
	19/08/2025	7.70	870	<0.050	510	5.5	-1.30	270
	15/09/2025	7.73	588	<0.050	470	<5.0	-0.65	270
	14/10/2025	6.90	794	<0.050	460	<5.0	-0.07	240
	19/11/2025	6.85	859	<0.050	500	<5.0	-5.10	200
	10/12/2025	6.80	860	<0.050	510	<5.0	-3.90	220
	28/01/2026	7.50	910	<0.050	550	<5.0	-5.90	240
	24/02/2026	7.20	950	<0.050	570	5.5	-5.40	260
	23/03/2026	8.00	580	<0.050	560	10.0	-0.74	250

ANZG 2018 95% Freshwater		-	-	-	-	-	-	-	0.055	-	-	0.37	0.0002	0.0001	-	0.0014	0.3	
Site ID	Date	Ca	Mg	Na	K	Cl	SO <sub>4</sub>	F	Al	Sb	As	B	Cd	Cr	Co	Cu	Fe	
		mg/L	mg/L	mg/L	mg/L	mg/L	mg/L	mg/L	mg/L	mg/L	mg/L	mg/L	mg/L	mg/L	mg/L	mg/L	mg/L	mg/L
DDL4 (2024-2025)	10/04/2024	44	43	59	7.6	92	53	0.50	<0.010	<0.001	<0.001	0.3	<0.00010	<0.001	<0.0010	<0.0010	<0.010	
	8/05/2024	42	41	53	7.5	87	47	0.53	<0.010	<0.0010	<0.0010	0.31	0.00015	<0.0010	<0.0010	<0.0010	<0.010	
	19/06/2024	46	49	59	7.8	86	46	<0.10	<0.010	<0.0010	<0.0010	0.25	<0.00010	<0.0010	<0.0010	<0.0010	<0.010	
	29/07/2024	48	47	63	8.7	87	50	0.62	<0.010	<0.0010	<0.0010	0.25	<0.00010	<0.0010	<0.0010	<0.0010	<0.010	
	28/08/2024	47	47	60	8.9	88	50	0.92	<0.010	<0.0010	<0.0010	0.23	<0.00010	<0.0010	<0.0010	<0.0010	<0.010	
	11/09/2024	48	44	59	8.6	89	52	0.50	<0.010	<0.0010	<0.0010	0.23	<0.00010	<0.0010	<0.0010	<0.0010	<0.0010	<0.010
	9/10/2024	45	42	54	8.1	99	49	0.54	<0.010	<0.0010	<0.0010	0.26	<0.00010	<0.0010	<0.0010	<0.0010	<0.0010	<0.010
	6/11/2024	45	45	66	9.1	100	55	0.58	<0.010	<0.0010	<0.0010	0.26	<0.00010	<0.0010	<0.0010	<0.0010	<0.0010	<0.01
	18/12/2024	44	45	65	9.3	89	50	0.52	<0.010	<0.0010	<0.0010	0.24	<0.00010	<0.0010	<0.0010	<0.0010	<0.0010	<0.01
	14/01/2025	53	52	80	12	98	60	0.57	0.034	<0.0010	<0.0010	0.29	<0.00010	<0.0010	<0.0010	<0.0010	<0.0010	0.091
	26/02/2025	49	49	76	10	100	59	0.69	<0.010	<0.0010	<0.0010	0.33	<0.00010	<0.0010	<0.0010	<0.0010	<0.0010	<0.010
26/03/2025	42	40	59	9	97	60	0.50	<0.010	<0.0010	<0.0010	0.31	<0.00010	<0.0010	<0.0010	<0.0010	<0.0010	<0.010	
DDL4 (2025-2026)	28/04/2025	50	43	67	8.4	100	62	0.48	<0.010	<0.0010	<0.0010	0.25	<0.00010	<0.0010	<0.0010	<0.0010	<0.010	
	22/05/2025	50	43	66	9.2	110	75	0.63	<0.010	<0.0010	<0.0010	0.22	<0.00010	<0.0010	<0.0010	<0.0010	<0.010	
	24/06/2025	48	45	62	8.2	98	67	0.49	<0.010	<0.0010	<0.0010	0.38	<0.00010	<0.0010	<0.0010	<0.0010	0.014	
	21/07/2025	50	44	62	8.7	98	54	0.38	<0.010	<0.0010	<0.0010	0.23	<0.00010	<0.0010	<0.0010	<0.0010	<0.010	
	19/08/2025	50	43	66	8.5	99	54	0.39	<0.010	<0.0010	<0.0010	0.25	<0.00010	<0.0010	<0.0010	<0.0010	<0.010	
	15/09/2025	50	40	59	8.6	91	52	0.40	<0.010	<0.0010	<0.0010	0.21	<0.00010	<0.0010	<0.0010	<0.0010	<0.010	
	14/10/2025	47	33	52	6.5	88	47	0.24	<0.010	<0.0010	<0.0010	0.15	<0.00010	<0.0010	<0.0010	<0.0010	<0.010	
	19/11/2025	49	36	49	8.1	100	54	0.32	<0.010	<0.0010	<0.0010	0.2	<0.00010	<0.0010	<0.0010	<0.0010	<0.010	
	10/12/2025	48	37	63	7.2	110	55	0.26	<0.010	<0.0010	<0.0010	0.2	<0.00010	<0.0010	<0.0010	<0.0010	<0.010	
	28/01/2026	45	41	64	8.4	120	58	0.39	<0.010	<0.0010	<0.0010	0.23	<0.00010	<0.0010	<0.0010	<0.0010	<0.010	
	24/02/2026	47	47	68	9.3	120	63	0.40	<0.010	<0.0010	<0.0010	0.26	<0.00010	<0.0010	<0.0010	<0.0010	0.0016	<0.010
23/03/2026	46	44	75	8.8	110	56	0.43	<0.010	<0.0010	<0.0010	0.23	<0.00010	<0.0010	<0.0010	<0.0010	<0.0010	<0.010	

ANZG 2018 95% Freshwater		0.0034	1.9	0.0006	-	0.011	-	11	0.3	0.01	0.011	-	-	-	0.008
Site ID	Date	Pb	Mn	Hg	Mo	Ni	NO <sub>2</sub>	NO <sub>3</sub>	Total Nitrogen	Total Phosphorus	Se	W	U	V	Zn
		mg/L	mg/L	mg/L	mg/L	mg/L	mg/L	mg/L	mg/L	mg/L	mg/L	mg/L	mg/L	mg/L	mg/L
DDL4 (2024-2025)	10/04/2024	<0.0010	<0.0010	<0.000050	<0.0010	<0.0010	0.092	3.20	0.95	<0.050	<0.0010	<0.010	<0.0010	<0.0010	<0.001
	8/05/2024	<0.0010	<0.0010	<0.000050	<0.0010	<0.0010	<0.020	0.97	0.43	<0.050	<0.0010	<0.010	<0.0010	<0.0010	0.0016
	19/06/2024	<0.0010	0.0220	<0.000050	<0.0010	<0.0010	<0.020	0.49	0.18	<0.050	<0.0010	<0.010	0.0011	<0.0010	0.002
	29/07/2024	<0.0010	<0.0010	<0.000050	<0.0010	<0.0010	0.024	0.16	0.12	<0.050	<0.0010	<0.010	<0.0010	<0.0010	0.019
	28/08/2024	<0.0010	0.0150	<0.000050	<0.0010	<0.0010	<0.020	1.20	0.22	<0.050	<0.0010	<0.010	<0.0010	<0.0010	0.012
	11/09/2024	<0.0010	0.0064	<0.000050	<0.0010	<0.0010	<0.020	0.09	0.17	<0.050	<0.0010	<0.010	<0.0010	<0.0010	0.0012
	9/10/2024	<0.0010	<0.0010	<0.000050	<0.0010	<0.0010	<0.020	0.23	0.34	<0.050	<0.0010	<0.010	<0.0010	<0.0010	<0.001
	6/11/2024	<0.0010	<0.0010	<0.000050	<0.0010	<0.0010	<0.020	0.18	0.22	<0.050	<0.0010	<0.010	<0.0010	<0.0010	0.0011
	18/12/2024	<0.0010	0.0021	<0.000050	<0.0010	<0.0010	<0.020	<0.02	0.24	<0.050	<0.0010	<0.010	<0.0010	<0.0010	0.0023
	14/01/2025	<0.0010	0.0021	<0.000050	<0.0010	<0.0010	<0.020	1.30	0.51	<0.050	<0.0010	<0.010	<0.0010	<0.0010	0.0054
	26/02/2025	<0.0010	0.0068	<0.000050	<0.0010	<0.0010	0.039	2.00	1.00	<0.050	<0.0010	<0.010	<0.0010	<0.0010	0.0014
26/03/2025	<0.0010	<0.0010	<0.000050	<0.0010	<0.0010	<0.020	1.20	0.58	<0.050	<0.0010	<0.010	<0.0010	<0.0010	<0.001	
DDL4 (2025-2026)	28/04/2025	<0.0010	<0.0010	<0.000050	<0.0010	<0.0010	0.023	12.00	3.10	<0.050	<0.0010	<0.010	<0.0010	<0.0010	<0.001
	22/05/2025	<0.0010	0.0013	<0.000050	<0.0010	<0.0010	0.060	11.00	3.20	<0.050	0.0017	<0.0010	<0.0010	<0.0010	0.0018
	24/06/2025	<0.0010	0.0193	<0.000050	<0.0010	<0.0010	<0.020	2.60	0.58	<0.050	<0.0010	<0.010	<0.0010	<0.0010	<0.001
	21/07/2025	<0.0010	0.0014	<0.000050	<0.0010	<0.0010	<0.02	3.90	0.99	<0.050	<0.0010	<0.010	<0.0010	<0.0010	0.0015
	19/08/2025	<0.0010	0.0015	<0.000050	<0.0010	<0.0010	<0.020	3.10	0.92	<0.050	<0.0010	<0.010	<0.0010	<0.0010	<0.001
	15/09/2025	<0.0010	<0.0010	<0.000050	<0.0010	<0.0010	0.210	5.80	1.80	<0.050	<0.0010	<0.010	<0.0010	<0.0010	<0.001
	14/10/2025	<0.0010	0.0065	<0.000050	<0.0010	<0.0010	<0.020	3.20	0.79	<0.050	<0.0010	<0.010	<0.0010	<0.0010	0.0099
	19/11/2025	<0.0010	0.0017	<0.000050	<0.0010	<0.0010	<0.020	3.60	0.92	<0.050	<0.0010	<0.010	<0.0010	<0.0010	0.0034
	10/12/2025	<0.0010	0.0012	<0.000050	<0.0010	<0.0010	<0.020	3.20	0.94	<0.050	<0.0010	<0.010	<0.0010	<0.0010	0.0043
	28/01/2026	<0.0010	<0.0010	<0.000050	<0.0010	<0.0010	<0.020	3.80	0.89	<0.050	<0.0010	<0.010	<0.0010	<0.0010	0.0031
	24/02/2026	<0.0010	<0.0010	<0.000050	<0.0010	<0.0010	<0.020	4.00	0.96	<0.050	<0.0010	<0.010	<0.0010	<0.0010	0.0026
23/03/2026	<0.0010	<0.0010	<0.000050	<0.0010	<0.0010	<0.020	3.80	0.97	<0.050	<0.0010	<0.010	<0.0010	<0.0010	0.0016	

A-2 GROUNDWATER QUALITY MONITORING RESULTS

ANZG 2018 95% Freshwater		6.0-8.0	250-900	5000	-	-	-	-	-	-
Site ID	Date	Field pH	Field EC	Total Dissolved Solids (TDS)	Total Recoverable Hydrocarbons (TRH)	Total Suspended Solids (TSS)	Total Nitrogen	Total Phosphorus	Ionic Balance	Total Alkalinity as CaCO <sub>3</sub>
		pH units	us/cm	mg/L	mg/L	mg/L	mg/L	mg/L	mg/L	mg/L
PB25 (2024-2025)	11/09/2024	7.5	910	470	<0.05	<5.0	<0.10	<0.050	-5.40	300
	26/03/2025	7.7	930	540	<0.05	<5.0	<0.10	<0.050	-3.80	290
PB25 (2025-2026)	15/09/2025	7.3	928	500	<0.05	<5.0	<0.10	<0.050	-0.73	300
	28/03/2026 <sup>1</sup>	-	-	-	-	-	-	-	-	-
BH1 (2024-2025)	11/09/2024	6.8	650	370	<0.05	2400	2.4	<0.5	0.21	180
	26/03/2025 <sup>2</sup>	-	-	-	-	-	-	-	-	-
	21/07/2025	6.9	660	430	<0.05	2700	2.9	0.088	-0.58	210
BH1 (2025-2026)	15/09/2025	7.0	667	370	<0.05	620	3.2	0.13	-0.49	190
	28/03/2026 <sup>3</sup>	-	-	-	-	-	-	-	-	-
MB26 (2025-2026)	15/09/2025	7.2	936	460	<0.05	880	0.38	0.29	-2.90	310
	28/03/2026 <sup>3</sup>	-	-	-	-	-	-	-	-	-
MBD (2024-2025)	11/09/2024	8.2	880	460	<0.05	720	0.21	1.7	-4.40	290
	26/03/2025	7.2	960	540	<0.05	14	0.16	0.072	-7.70	280
MBD (2025-2026)	15/09/2025	7.2	908	480	<0.05	52	0.44	0.12	-1.20	290
	28/03/2026 <sup>3</sup>	-	-	-	-	-	-	-	-	-
MBK (2024-2025)	11/09/2024	7.1	900	420	<0.05	<5.0	<0.10	<0.050	-3.80	160
	26/03/2025	8.1	810	540	<0.05	9.5	<0.10	<0.050	-13.00	210
MBK (2025-2026)	15/09/2025	7.6	820.9	350	<0.05	24	<0.10	<0.050	-2.70	95
	23/03/2026	7.8 <sup>4</sup>	720 <sup>4</sup>	360	<0.05	28	0.26	0.088	-1.00	82

<sup>1</sup> PB25 (replaced PB22) – bore blocked by a pump lodged within the casing

<sup>2</sup> BH1 was not monitored in March 2025 due to it having been covered by rilling material but was sampled once uncovered in July 2025

<sup>3</sup> BH1, MBD and MB26 was not sampled in March 2026 due to safe access restrictions. Sampling to be completed in April 2026

<sup>4</sup> MPL Lab data

ANZG 2018 95% Freshwater		-	-	-	-	-	-	-	0.055	0.024	0.37	0.0002	0.001	-	0.0014		1.9
Site ID	Date	Ca	Mg	Na	K	Cl	SO <sub>4</sub>	F	Al	As	B	Cd	Cr	Co	Cu	Fe	Mn
		mg/L	mg/L	mg/L	mg/L	mg/L	mg/L	mg/L	mg/L	mg/L	mg/L	mg/L	mg/L	mg/L	mg/L	mg/L	mg/L
PB25 (2024-2025)	11/09/2024	49	43	56	8.5	94	54	0.47	<0.01	<0.001	0.25	<0.0001	<0.0001	<0.0010	<0.001	0.16	0.028
	26/03/2025	47	45	58	8.5	91	52	0.52	<0.01	<0.001	0.27	<0.0001	<0.0001	<0.001	<0.001	0.13	0.029
PB25 (2025-2026)	15/09/2025	50	47	62	8.5	88	48	0.51	<0.01	<0.001	0.27	<0.0001	<0.001	<0.001	<0.001	0.12	0.028
	28/03/2026 <sup>1</sup>	-	-	-	-	-	-	-	-	-	-	-	-	-	-	-	-
BH1 (2024-2025)	11/09/2024	42	29	41	6.1	69	38	0.44	<0.01	<0.001	0.18	<0.0001	<0.001	<0.001	<0.001	<0.01	0.0014
	26/03/2025 <sup>2</sup>	-	-	-	-	-	-	-	-	-	-	-	-	-	-	-	-
	21/07/2025	45	30	44	5.6	65	34	0.42	<0.01	<0.001	0.023	<0.0001	<0.001	<0.001	<0.001	0.014	<0.0010
BH1 (2025-2026)	15/09/2025	43	28	40	5.9	63	35	0.46	<0.01	<0.001	0.18	<0.0001	<0.001	<0.001	<0.001	0.12	<0.0010
	28/03/2026 <sup>3</sup>	-	-	-	-	-	-	-	-	-	-	-	-	-	-	-	-
MB26 (2025-2026)	15/09/2025	50	47	60	8.5	90	52	0.53	<0.01	<0.001	0.24	<0.0001	<0.001	<0.001	<0.001	<0.01	<0.0010
	28/03/2026 <sup>3</sup>	-	-	-	-	-	-	-	-	-	-	-	-	-	-	-	-
MBD (2024-2025)	11/09/2024	48	46	59	8	95	60	0.45	<0.01	<0.0010	0.23	<0.00010	<0.001	<0.001	<0.001	0.092	<0.0010
	26/03/2025	44	41	52	7.7	92	58	0.46	<0.01	<0.001	0.28	<0.0001	<0.001	<0.001	<0.001	<0.01	0.0019
MBD (2025-2026)	15/09/2025	50	45	59	7.9	85	50	0.49	<0.010	<0.001	0.23	<0.00010	<0.001	<0.001	<0.001	<0.01	<0.0010
	28/03/2026 <sup>3</sup>	-	-	-	-	-	-	-	-	-	-	-	-	-	-	-	-
MBK (2024-2025)	11/09/2024	13	34	89	16	180	3.2	0.33	<0.01	<0.001	0.2	<0.0001	<0.001	<0.001	<0.001	<0.01	0.057
	26/03/2025	11	24	75	14	120	19	0.41	<0.01	<0.001	0.25	<0.0001	<0.001	<0.001	<0.001	<0.01	0.017
MBK (2025-2026)	15/09/2025	11	18	89	14	170	<1.0	0.43	<0.010	<0.001	0.17	<0.001	<0.001	<0.001	<0.001	<0.01	0.013
	23/03/2026	11	14	89	13	160	<1.0	0.47	<0.010	<0.001	0.17	<0.001	<0.001	<0.001	<0.001	0.027	0.019

ANZG 2018 95% Freshwater		0.0006	-	0.011	0.0034	-	0.011	-	-	-	0.008
Site ID	Date	Hg	Mo	Ni	Pb	Sb	Se	W	V	U	Zn
		mg/L	mg/L	mg/L	mg/L	mg/L	mg/L	mg/L	mg/L	mg/L	mg/L
PB25 (2024-2025)	11/09/2024	<0.000050	<0.0010	<0.0010	<0.0010	<0.0010	<0.0010	<0.010	<0.0010	<0.0010	0.0011
	26/03/2025	<0.000050	<0.0010	<0.0010	<0.0010	<0.0010	<0.0010	<0.010	<0.0010	<0.0010	0.0022
PB25 (2025-2026)	15/09/2025	<0.000050	<0.0010	<0.0010	<0.0010	<0.0010	<0.0010	<0.010	<0.0010	<0.0010	0.0130
	28/03/2026 <sup>1</sup>	-	-	-	-	-	-	-	-	-	-
BH1 (2024-2025)	11/09/2024	<0.000050	<0.0010	<0.0010	<0.0010	<0.0010	0.0015	<0.010	<0.0010	<0.0010	0.0038
	26/03/2025 <sup>2</sup>	-	-	-	-	-	-	-	-	-	-
	21/07/2025	<0.000050	<0.0010	<0.0010	<0.0010	<0.0010	0.0015	<0.010	<0.0010	<0.0010	0.0029
BH1 (2025-2026)	15/09/2025	<0.000050	<0.0010	<0.0010	<0.0010	<0.0010	0.0019	<0.010	<0.0010	<0.0010	0.0084
	28/03/2026 <sup>3</sup>	-	-	-	-	-	-	-	-	-	-
MB26 (2025-2026)	15/09/2025	<0.000050	<0.0010	0.0085	<0.0010	<0.0010	<0.0010	<0.010	<0.0010	<0.0010	0.0086
	28/03/2026 <sup>3</sup>	-	-	-	-	-	-	-	-	-	-
MBD (2024-2025)	11/09/2024	<0.000050	<0.0010	<0.001	<0.0010	<0.0010	<0.0010	<0.010	<0.0010	<0.0010	<0.0010
	26/03/2025	<0.000050	<0.0010	0.012	<0.0010	<0.0010	<0.0010	<0.010	<0.0010	<0.0010	0.0084
MBD (2025-2026)	15/09/2025	<0.000050	<0.0010	0.002	<0.0010	<0.0010	<0.0010	<0.010	<0.0010	<0.0010	0.0150
	28/03/2026 <sup>3</sup>	-	-	-	-	-	-	-	-	-	-
MBK (2024-2025)	11/09/2024	<0.000050	<0.0010	<0.0010	<0.0010	<0.0010	<0.0010	<0.010	<0.0010	<0.0010	<0.0010
	26/03/2025	<0.000050	<0.0010	0.0012	<0.0010	<0.0010	<0.001	<0.010	<0.0010	<0.0010	0.0010
MBK (2025-2026)	15/09/2025	<0.000050	0.0011	<0.0010	<0.0010	<0.0010	<0.0010	<0.010	<0.0010	<0.0010	0.0042
	23/03/2026	<0.000050	0.0013	0.0013	<0.0010	<0.0010	<0.0010	<0.010	<0.0010	<0.0010	0.0110



**APPENDIX B** IRON  
VALLEY ANNUAL AUDIT  
OF COMPLIANCE  
REPORT 2026

## Annual Audit Compliance Report Form

Environmental Protection Act 1986, Part V Division 3

Section A – Licence details			
Licence number:	L8859/2014/1	Licence file number:	DER2014/001998-1
Licence holder name:	Mineral Resources Limited		
Trading as:	Mineral Resources Limited		
ACN:	118 549 910		
Registered business address:	Iron Valley Iron Ore Project Mining Tenement M47/1439 and Miscellaneous Licence L47/757 Newman WA 6753		
Reporting period:	01 / 04 / 2025 to 31 / 03 / 2026		

Section B – Statement of compliance with licence conditions	
Did you comply with all of your licence conditions during the reporting period? (please tick the appropriate box)	
<input type="checkbox"/> Yes – please complete: <ul style="list-style-type: none"> <li>• section C;</li> <li>• section D (if required); and</li> <li>• sign the declaration in Section F.</li> </ul>	
<input checked="" type="checkbox"/> No – please complete: <ul style="list-style-type: none"> <li>• section C;</li> <li>• section D (if required);</li> <li>• section E; and</li> <li>• sign the declaration in Section F.</li> </ul>	

Section C – Statement of actual production	
Provide the actual production quantity for this reporting period. Supporting documentation is to be attached.	
Prescribed premises category	Actual production quantity
(5) Processing or beneficiation of metallic or non-metallic ore	5,740,461 tonnes
(6) Mine dewatering	12,792,557 tonnes
(89) Putrescible Landfill Site	824.16 tonnes

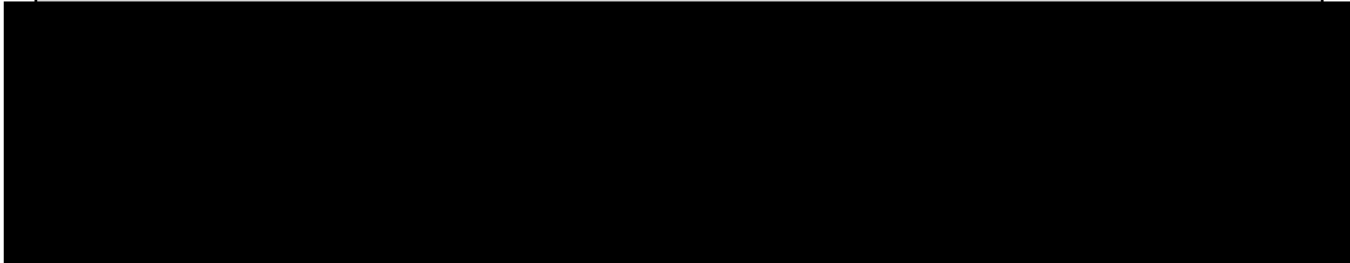
Section D – Statement of actual Part 2 waste discharge quantity	
Provide the actual Part 2 waste discharge quantity for this reporting period. Supporting documentation is to be attached.	
Prescribed premises category	Actual Part 2 waste discharge quantity
(6) Mine dewatering	12,792,557 tonnes

Section E – Details of non-compliance with licence condition			
Please use a separate page for each condition with which the licence holder was non-compliant at a time during the reporting period.			
Condition no:	3.4.1	Date(s) of non-compliance:	31/03/26
Details of non-compliance:			
Six monthly water quality and SWL monitoring of the Project's mine dewatering bores was not achieved for PB25, BH1, MB21 and MB26.			
What was the actual (or suspected) environmental impact of the non-compliance? <b>NOTE</b> – please attach maps or diagrams to provide insight into the precise location of where the non-compliance took place.			
Nil environmental impact.  <ul style="list-style-type: none"> <li>• Standing water levels in general remained stable compared to the previous annual period.</li> <li>• Water quality results recorded for the Annual Period indicate the groundwater quality from the bores monitored to be relatively homogenous and comparable to the previous annual period.</li> </ul>			
Cause (or suspected cause) of non-compliance:			
<ul style="list-style-type: none"> <li>• MB21: Decommissioned and not sampled during the Annual Period due to geotechnical issues preventing safe access to the location. <ul style="list-style-type: none"> <li>○ MB21 was replaced by MB26 as it is located approximately 105 m southwest of MB21.</li> </ul> </li> <li>• MB26: Access restriction prevented SWL reading to be measured in March 2026.</li> <li>• PB25: Replaced PB22 in June 2025 Licence amendment (approved 13 June 2025).</li> <li>• BH1: Access to bore restricted as the bore was covered by riling material.</li> </ul>			
Action taken to mitigate any adverse effects of non-compliance and prevent recurrence of the non-compliance:			
<ul style="list-style-type: none"> <li>• MB26: Amend Condition 3.4.1 of the Licence to remove MB21 and replace with MB26.</li> <li>• MB26: March 2026 sampling to be completed in April 2026.</li> <li>• BH1: Access to bore reinstated in July 2025, with resample taken on 21 July 2025.</li> </ul>			
Was this non-compliance previously reported to DWER?			
<input checked="" type="checkbox"/> No, and			
<input type="checkbox"/> Reported to DWER verbally		Date:	
<input type="checkbox"/> Reported to DWER in writing		Date:	

**Section F – Declaration**

I / We declare that the information in this Annual Audit Compliance Report is true and correct and is not false or misleading in a material particular<sup>1</sup>.

I / We consent to the Annual Audit Compliance Report being published on the Department of Water and Environmental Regulation's (DWER) website.



Date:	28/04/2026	Date:	
Seal (if signing under seal):			

<sup>1</sup> It is an offence under section 112 of the *Environmental Protection Act 1986* for a person to give information on this form that to their knowledge is false or misleading in a material particular.

<sup>2</sup> AACRs can only be signed by the licence holder or an authorised person with the legal authority to sign on behalf of the licence holder.



**MINERAL RESOURCES LIMITED**

20 Walters Drive  
Osborne Park WA 6017

Locked Bag 13, Osborne Park DC, WA 6916

**T** +61 8 9329 3600

**E** [reception@mineralresources.com.au](mailto:reception@mineralresources.com.au) | **W** [www.mrl.com.au](http://www.mrl.com.au)