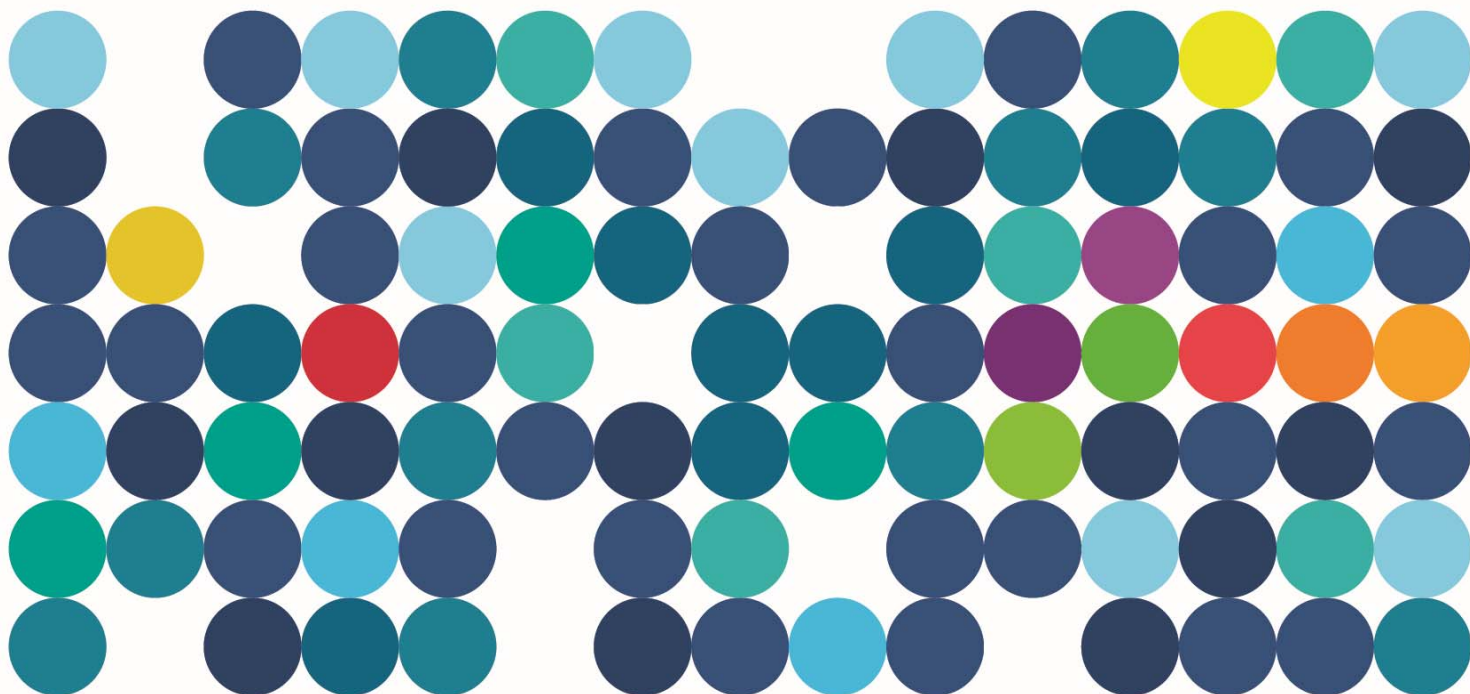


Christmas Island WWTP L9222

Quarterly Monitoring Report

October 2021- December 2021





Period 2 2021-22 (Oct-Dec 2021)

This report is provided to satisfy Condition 23 Table 8 from Licence L9222/2019/1, Table 4.2.2 Non- annual reporting requirements.

23. The Licensee shall submit the information in Table 8 to the CEO according to the specifications in that table.

Table 8: Non-annual reporting requirements				
Condition or table (if relevant)	Parameter	Reporting period	Reporting date (after end of the reporting period)	Format or form
Table 5	Monitoring of point source emissions to surface water	Quarterly	28 calendar days	Include an assessment of any elevated results, associated impact and any actions undertaken to rectify issues.
-	Copies of original monitoring reports submitted to the Licensee by third parties	Not Applicable	Within 14 days of the CEOs request	As received by the Licensee from third parties.

Licence:	L9222/2019/1	Licensee:	Water Corporation
Name:	Assessment of elevated emission results	Period of report	1 Oct – 31 Dec 2021 Quarter 1
Form ET1: Target exceedance			
Please provide an analysis for the reporting period of:			
<p>(a) <i>The emission point and parameter sampling requirements;</i></p> <p>(b) <i>The monitoring result values and description elevated trends;</i></p> <p>(c) <i>The root cause analysis for any elevated results ;</i></p> <p>(d) <i>Any common or contributory factors including but not limited to flow rates;</i></p> <p>(e) <i>A description of remedial measures taken or planned to be taken, including those taken to prevent recurrence of the elevated result; and</i></p> <p>(f) <i>Complaints received that may have been caused by these elevated results.</i></p>			
(a) Christmas Island WWTP – SP Xmas Is WWTP Effluent Autosampler 1			



	19/10/2021	23/11/2021	14/12/2021
pH lab	8.19	8.04	8.19
pH insitu	7.94	8.09	8.01
Biochemical Oxygen Demand (mg/L)	<5	<5	<5
Total Dissolved Solids (by evap) mg/L	400	330	340
Total Nitrogen mg/L	1.3	1.4	1.3
Total Phosphorus mg/L	0.24	0.26	0.21
E.Coli /100 mL	<10	<10	<10
Ammonium-nitrogen mg/L	0.07	0.065	0.055
Nitrate+Nitrate as Nitrogen mg/L	0.61	0.73	0.64
Oil and Grease mg/L	<5	<5	6
Suspended Solids mg/L	<5	<5	<5
Copper mg/L	<0.02	-	-
Lead mg/L	<0.02	-	-
Zinc mg/L	-	-	-
Cadmium mg/L	<0.02	-	-

(b) All results are within process targets, no adverse results or trends observed. Average inflow for the period was 441-549 kL/day, well below licence capacity of 1750 kL/day

(c) n/a

(d) n/a

(e) n/a

(f) No complaints received